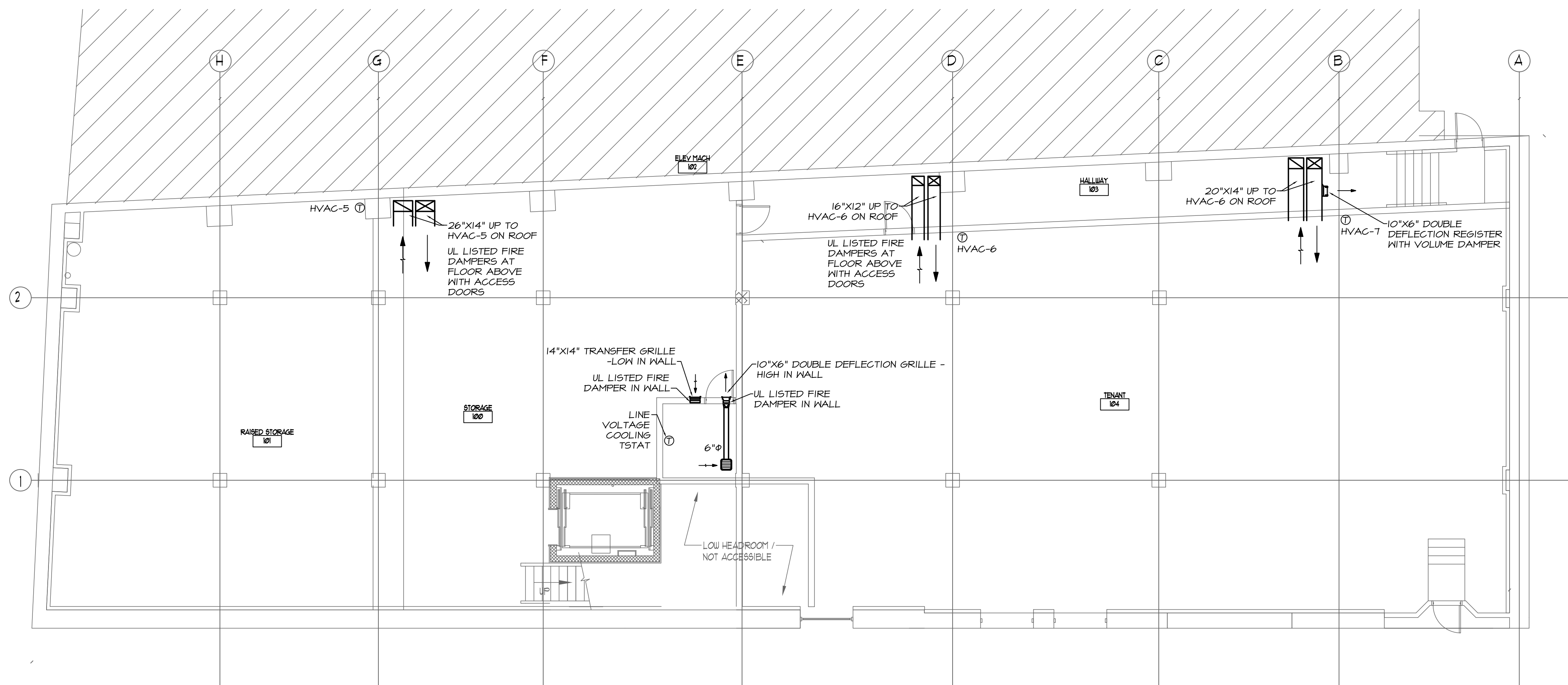
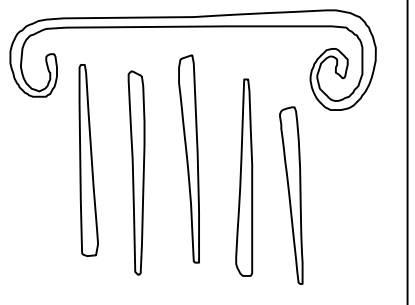


**1 FIRST FLOOR MECHANICAL PLAN**  
SCALE: 1/8" = 1'-0"

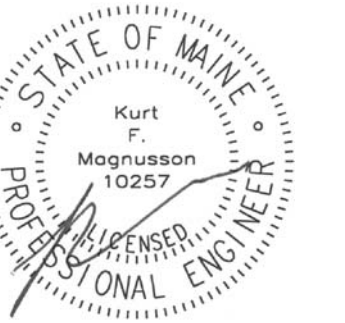


**2 LOWER LEVEL MECHANICAL PLAN**  
SCALE: 1/8" = 1'-0"



**PORT CITY ARCHITECTURE**

65 NEWBURY STREET  
PORTLAND, ME 04101  
207.761.9000  
fax: 207.761.2010  
info@portcityarch.com



**CONSULTANTS**

**Swiftcurrent Engineering Services Inc.**  
10 Forest Fall Drive - unit 4B  
Yarmouth, Maine 04096  
(207) 847-9280  
contact: Tim Matthews, P.E.  
tim@swiftcurrenteng.com

**Mechanical Systems Engineers**  
10 Forest Fall Drive - suite 10  
Yarmouth, Maine 04096  
(207) 846-9441  
contact: Kurt Magnusson, P.E.  
kurt@mechanicalsystemseng.com

PERMIT SET  
10-21-16

NOT FOR  
CONSTRUCTION

NEWPORT  
DEVELOPMENT  
ASSOCIATES

164 Middle St  
Portland, Maine

#	DATE	DESCRIPTION

DATE ISSUED OCTOBER 21, 2016  
PROJECT NUMBER 16207  
DRAWING SCALE AS NOTED

SHEET NAME  
**MECHANICAL FIRST & LOWER PLAN**

DRAWN BY  
KFM

CHECKED BY  
KFM

**M1.1**