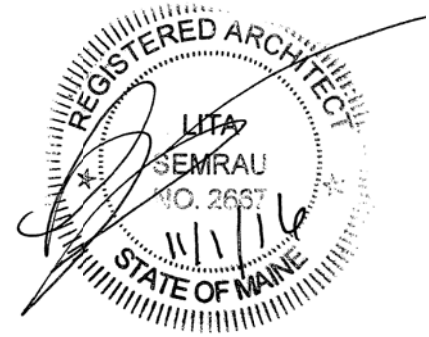


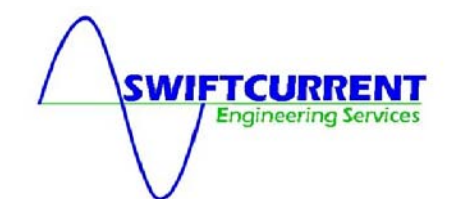
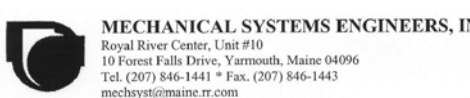


PORT CITY ARCHITECTURE

65 NEWBURY STREET
PORTLAND, ME 04101
207.761.9000



Consultants:



**PERMIT SET
11-1-16**

**NOT FOR
CONSTRUCTION**

**NEWPORT
DEVELOPMENT
ASSOCIATES**

164 Middle St
Portland, Maine

DATE DESCRIPTION

Date Issued November 1, 2016

Project Number 16201

Drawing Scale AS NOTED

**DEMO EXTERIOR
ELEVATIONS**

Drawn By

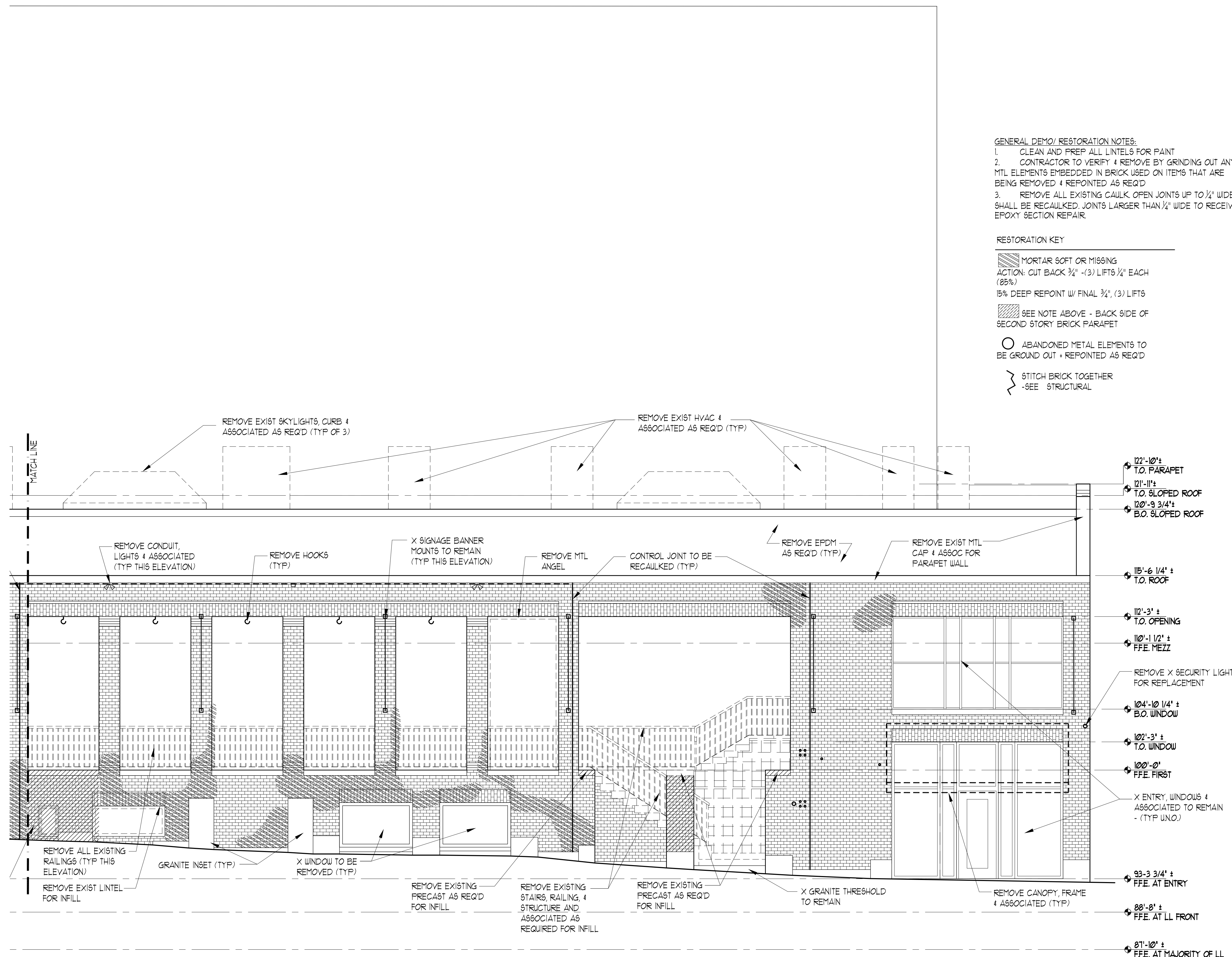
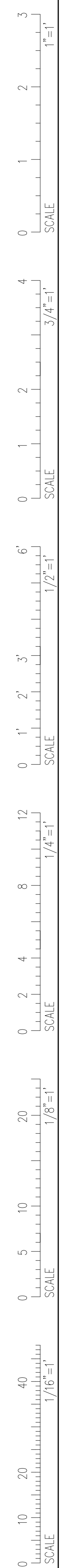
JP CM

TS CR

Checked By

LAS

D2.4



GENERAL DEMO/RESTORATION NOTES:
1. CLEAN AND PREP ALL LINTELS FOR PAINT
2. CONTRACTOR TO VERIFY & REMOVE BY GRINDING OUT ANY MTL ELEMENTS EMBEDDED IN BRICK USED ON ITEMS THAT ARE BEING REMOVED & REPOINTED AS REQ'D
3. REMOVE ALL EXISTING CAULK, OPEN JOINTS UP TO 1/2" WIDE SHALL BE RECAULKED, JOINTS LARGER THAN 1/2" WIDE TO RECEIVE EPOXY SECTION REPAIR.

RESTORATION KEY

- MORTAR SOFT OR MISSING
ACTION: CUT BACK 3/4" - (3) LIFTS 1/4" EACH (85%)
15% DEEP REPOINT W/ FINAL 3/4", (3) LIFTS
- SEE NOTE ABOVE - BACK SIDE OF SECOND STORY BRICK PARAPET
- ABANDONED METAL ELEMENTS TO BE GROUND OUT + REPOINTED AS REQ'D
- STITCH BRICK TOGETHER - SEE STRUCTURAL

1 MARKET ST EXTERIOR ELEVATION
SCALE: 1/4" = 1'-0"