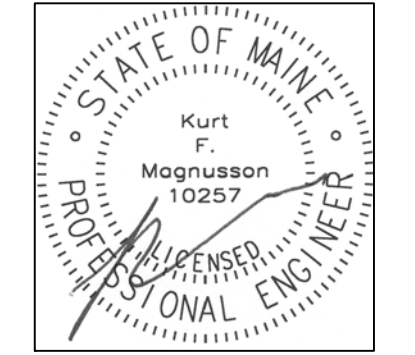


PORT CITY ARCHITECTURE

65 NEWBURY STREET
 PORTLAND, ME 04101
 207.761.9000
 fax: 207.761.2010
 info@portcityarch.com



CONSULTANTS

Swiftcurrent Engineering Services Inc.
 10 Forest Fall Drive - unit 4B
 Yarmouth, Maine 04096
 (207) 847-9280
 contact: Tim Matthews, P.E.
 tim@swiftcurrenteng.com

Mechanical Systems Engineers
 10 Forest Fall Drive - suite 10
 Yarmouth, Maine 04096
 (207) 846-9441
 contact: Kurt Magnusson, P.E.
 kurt@mechanicalsystemseng.com

PERMIT SET

NOT FOR CONSTRUCTION

NEWPORT DEVELOPMENT ASSOCIATES

25 Bedford Street
 Portland, ME
 164 Middle St.
 Portland, Maine

#	DATE	DESCRIPTION
1	--	--

DATE ISSUED SEPTEMBER 9, 2016

PROJECT NUMBER 16207

DRAWING SCALE AS NOTED

SHEET NAME

MECH. & PLUMB. FIRST & LOWER. DEMOLITION

DRAWN BY KFM

CHECKED BY KFM

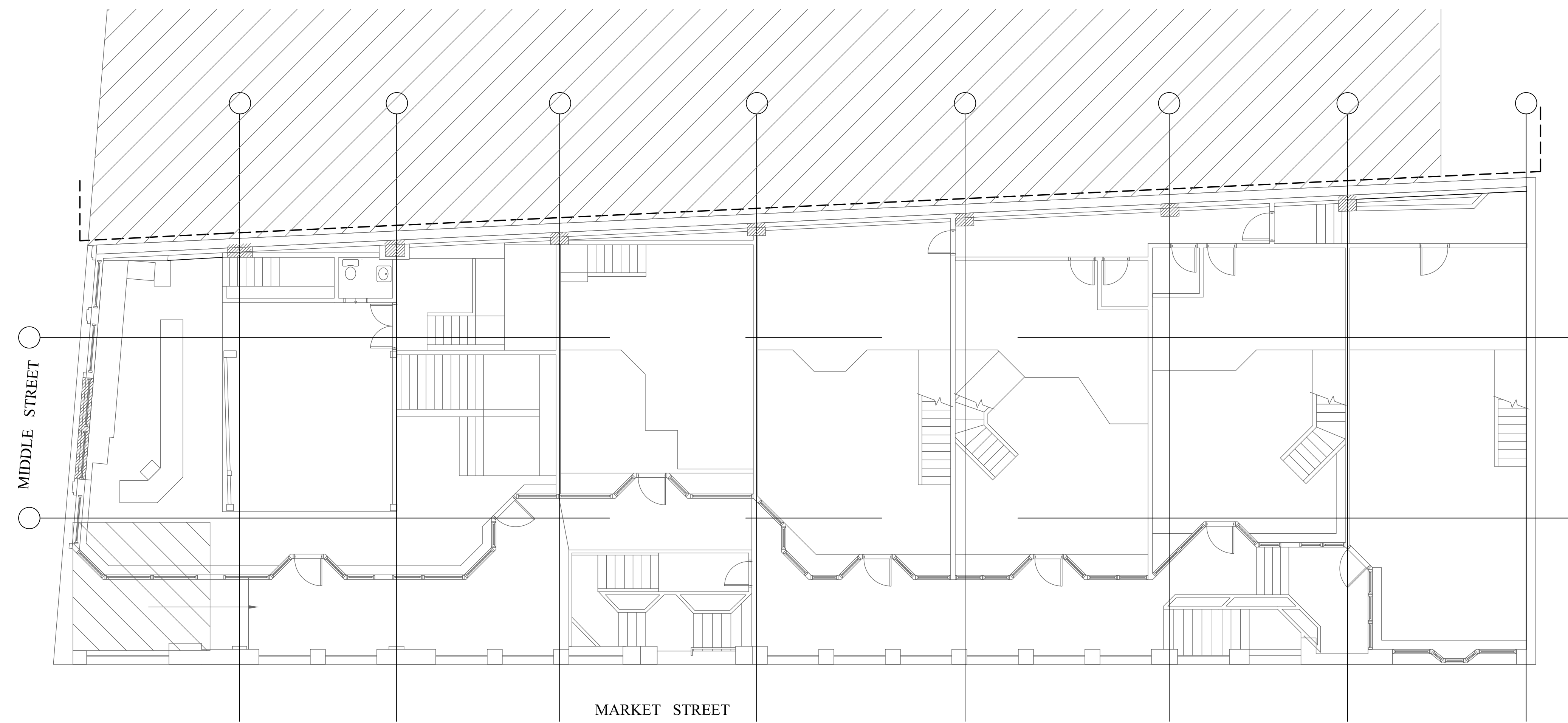
MPD1.1

FIRST FLOOR DEMOLITION NOTES

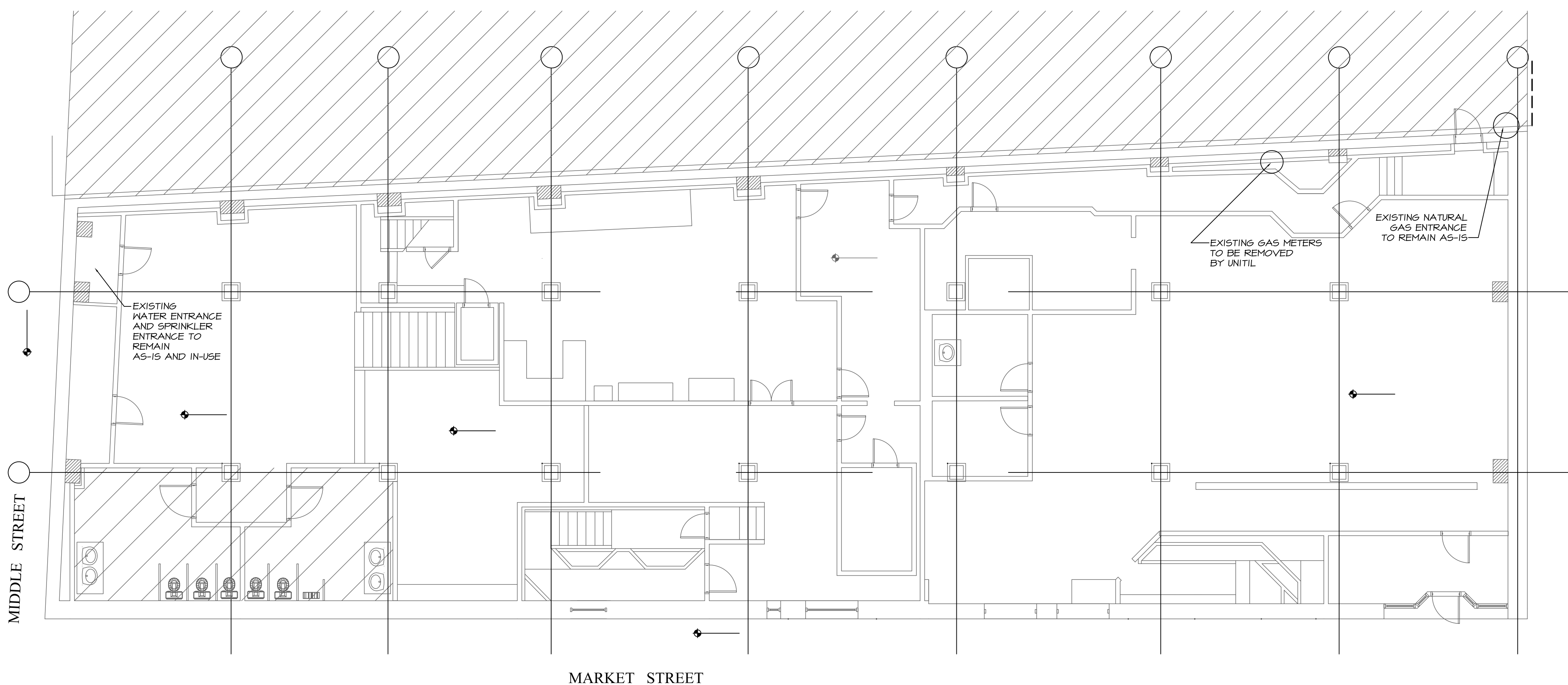
- All ductwork to be removed from the jobsite and disposed of per EPA Standards.
- All plumbing piping and plumbing fixtures to be removed and disposed of including but not limited to
 - Drain, waste and vent piping
 - Gas piping
 - Storm water piping.
 - Domestic hot and cold water piping

LOWER LEVEL DEMOLITION NOTES

- All ductwork to be removed from the jobsite and disposed of per EPA Standards.
- All plumbing piping and plumbing fixtures to be removed and disposed of including but not limited to
 - Drain, waste and vent piping
 - Gas piping
 - Storm water piping.
 - Domestic hot and cold water piping



1 FIRST FLOOR MECHANICAL DEMOLITION PLAN
 SCALE: 1/8" = 1'-0"



2 LOWER LEVEL MECHANICAL DEMOLITION PLAN
 SCALE: 1/8" = 1'-0"

