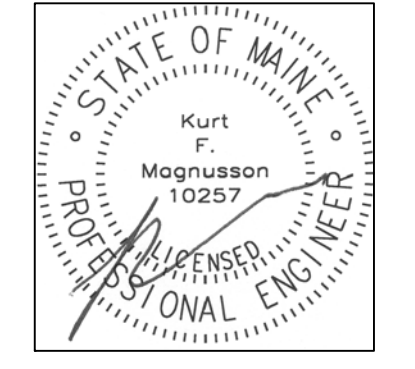


PORT CITY ARCHITECTURE

65 NEWBURY STREET
 PORTLAND, ME 04101
 207.761.9000
 fax: 207.761.2010
 info@portcityarch.com



CONSULTANTS

Swiftcurrent Engineering Services Inc.
 10 Forest Fall Drive - unit 4B
 Yarmouth, Maine 04096
 (207) 847-9280
 contact: Tim Matthews, P.E.
 tim@swiftcurrenteng.com

Mechanical Systems Engineers
 10 Forest Fall Drive - suite 10
 Yarmouth, Maine 04096
 (207) 846-9441
 contact: Kurt Magnusson, P.E.
 kurt@mechanicalsystemseng.com

PERMIT SET

NOT FOR CONSTRUCTION

NEWPORT DEVELOPMENT ASSOCIATES

**25 Bedford Street
 Portland, ME
 164 Middle St.
 Portland, Maine**

#	DATE	DESCRIPTION
1	--	--

DATE ISSUED SEPTEMBER 9, 2016
 PROJECT NUMBER 16207
 DRAWING SCALE AS NOTED

SHEET NAME
**MECH. & PLUMB.
 ROOF & MEZZ.
 DEMOLITION**

DRAWN BY
KFM
 CHECKED BY
KFM

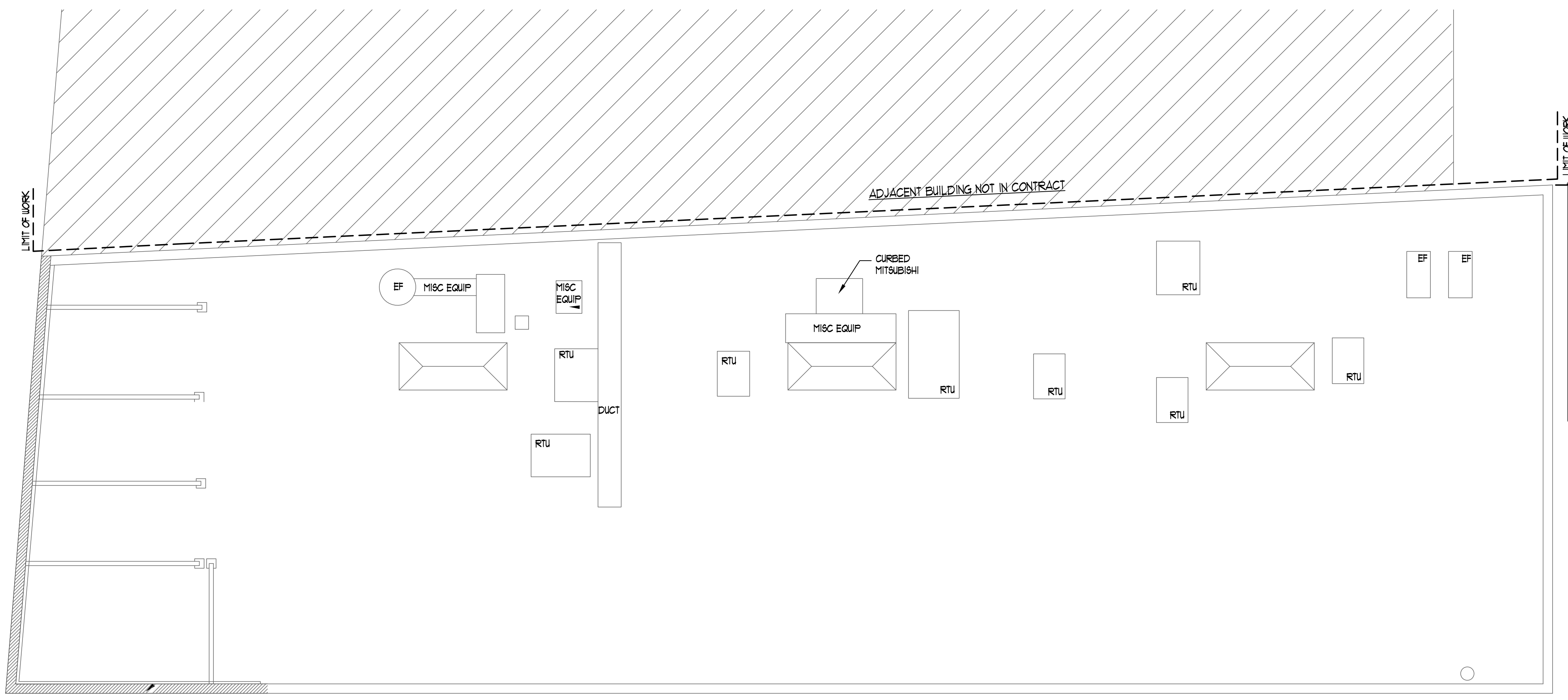
MPD1.0

ROOF DEMOLITION NOTES

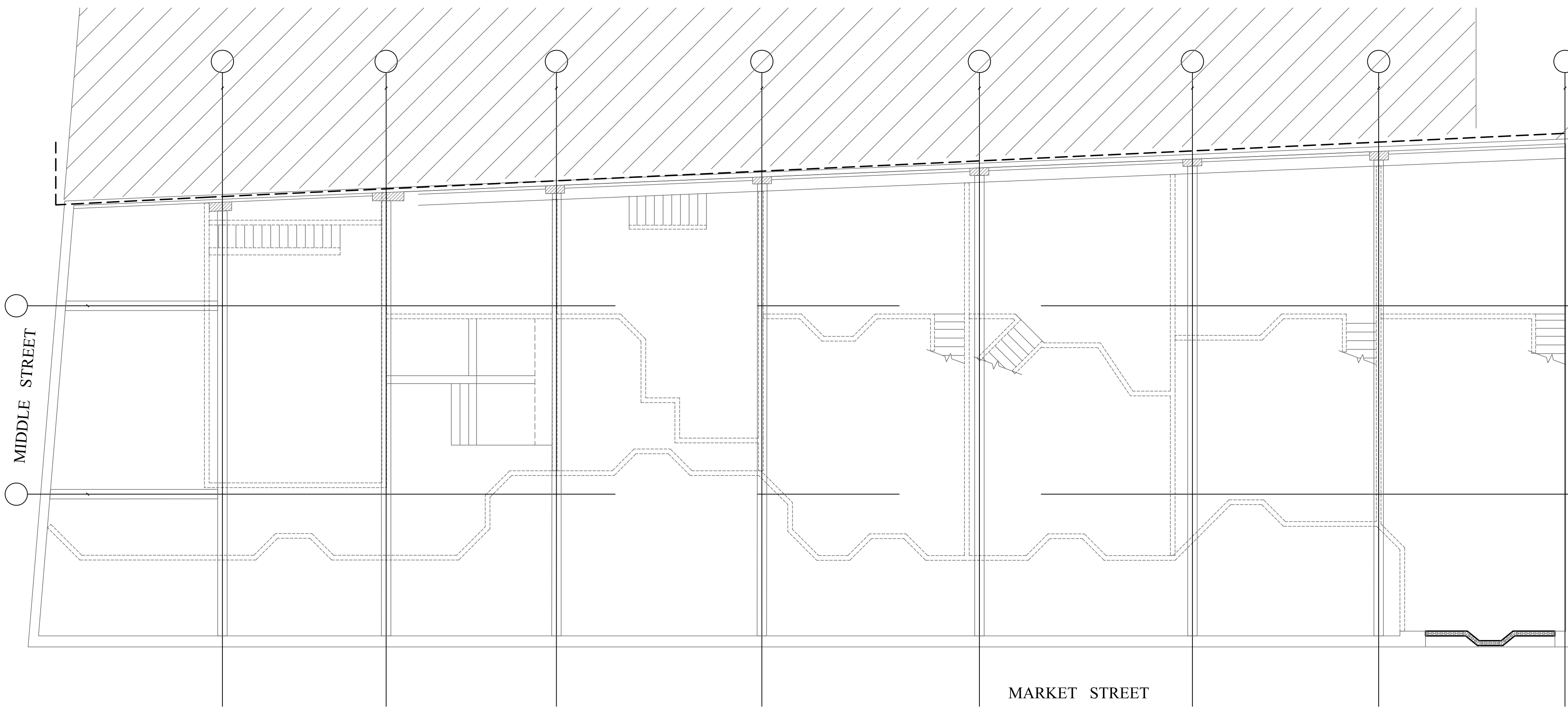
- All roof-mounted heating, ventilation and air conditioning units are to be removed from the roof.
- All ductwork and fans are to be removed from the roof.
- Remove refrigerant from the split system air conditioning units per EPA standards. Solder end caps on the liquid and gas connections for both the indoor and outdoor split systems.
- All HVAC to be taken to a location indicated by the owner (in the Greater Portland Area).
- All fans and ductwork to be removed from the jobsite and disposed of.
- All plumbing vents to be removed and disposed of.

MEZZANINE DEMOLITION NOTES

- All ductwork to be removed from the jobsite and disposed of per EPA Standards.
- All plumbing piping and plumbing fixtures to be removed and disposed of including but not limited to:
 - Drain, waste and vent piping
 - Gas piping
 - Storm water piping.
 - Domestic hot and cold water piping



1 ROOF MECHANICAL DEMOLITION PLAN
 SCALE: 1/8" = 1'-0"



2 MEZZANINE MECHANICAL DEMOLITION PLAN
 SCALE: 1/8" = 1'-0"

SCALE
 1" = 1'

SCALE
 3/4" = 1'

SCALE
 1/2" = 1'

SCALE
 1/4" = 1'

SCALE
 1/8" = 1'

SCALE
 1/16" = 1'