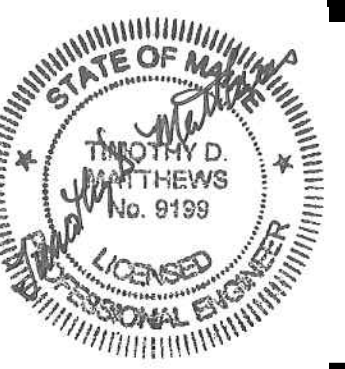




PORT CITY ARCHITECTURE

65 NEWBURY STREET
PORTLAND, ME 04101
207.761.9000



Consultants:

Swiftcurrent Engineering Services, Inc.
10 Forest Falls Dr. - Unit 4B
Yarmouth, ME 04096
(207) 847-9280
contact Timothy D. Matthews, P.E.
tim@swiftcurrenteng.com

PERMIT SET
NOT FOR CONSTRUCTION

NEWPORT DEVELOPMENT ASSOCIATES

164 Middle St
Portland, Maine

#	DATE	DESCRIPTION

Date issued September 9th, 2016
Project Number 16202
Drawing Scale AS NOTED

ELECTRICAL DEMOLITION PLAN - SECOND FLOOR

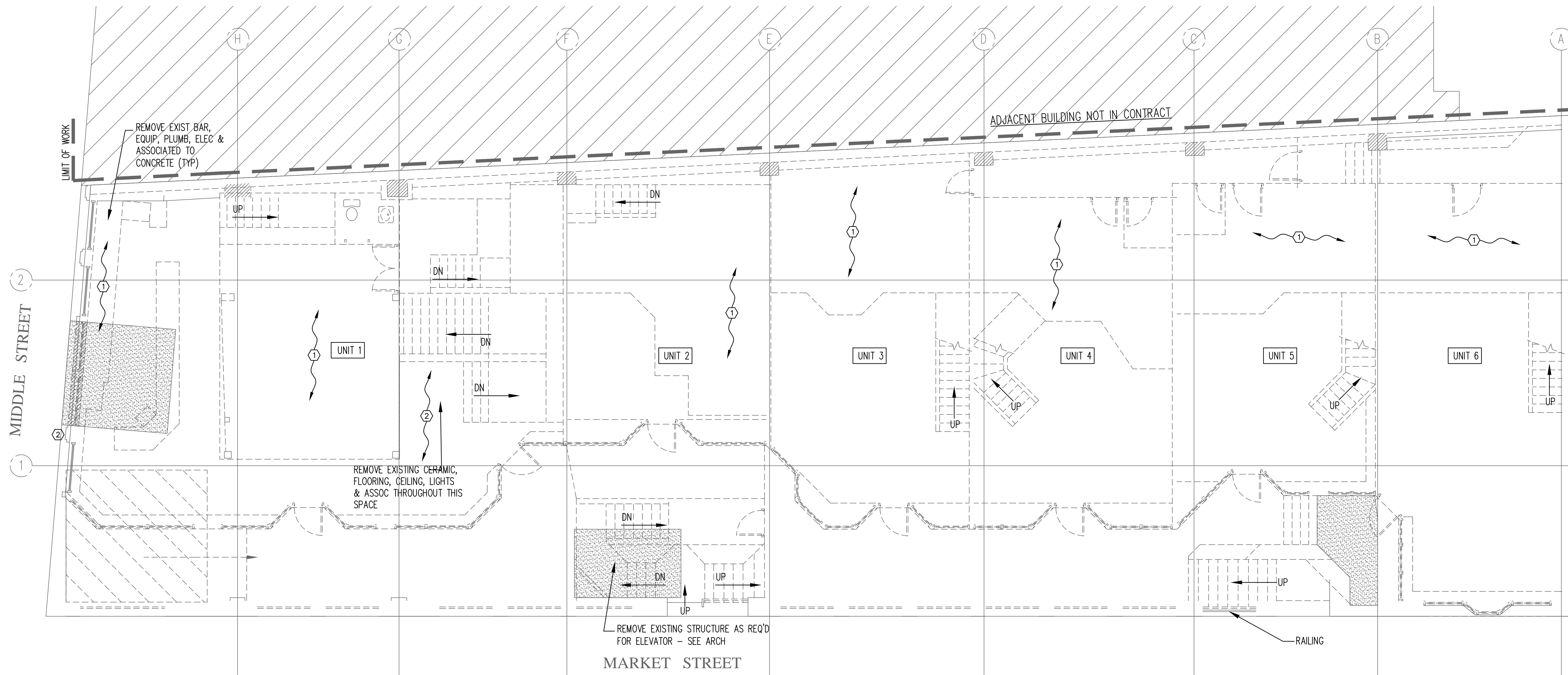
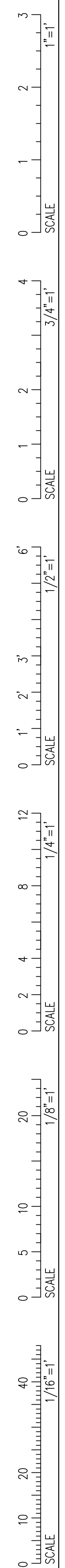
Drawn By JMD
Checked By TDM
ED1.2

NOTES:

1. SEE E0.0 FOR LEGEND, ABBREVIATIONS AND GENERAL NOTES.

KEYED NOTES:

- ① REMOVE WIRING AND CONDUIT FOR EQUIPMENT BACK TO PANEL.
- ② REMOVE WIRING AND CONDUIT FOR EXISTING SIGN AND EXTERIOR LIGHTING BACK TO PANEL.



1 ELECTRICAL DEMOLITION PLAN - FIRST FLOOR
SCALE: 3/16"=1'-0"