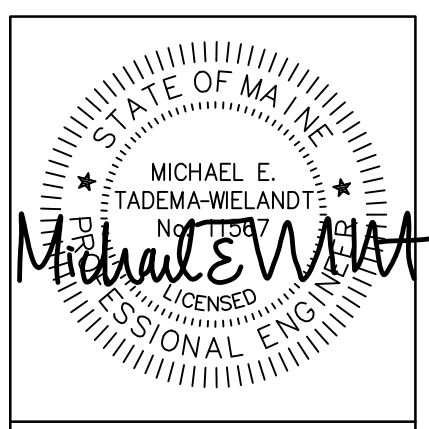


PRELIMINARY - NOT FOR CONSTRUCTION



P.E.: MICHAEL E. TADEAMA-WIELANDT  
DATE: 06-20-2018

NO.	DATE	REVISIONS
1	06-20-2018	MODIFIED BUILDING AND PARKING AND RE-SUBMITTED TO THE CITY OF PORTLAND
2	04-26-2018	REVISED

565 CONGRESS STREET  
SUITE 310  
PORTLAND, ME 04102

41 CAMPUS DRIVE  
SUITE 101  
NEW GLOUCESTER, ME 04260

OFFICE: (207) 926-5111 FAX: (207) 221-1317  
www.terradynconsultants.com

**TERRADYN**  
CONSULTANTS, LLC

Civil Engineering - Land Planning - Stormwater Design - Environmental Permitting

SHEET DESCRIPTION  
208 FORE STREET  
PORTLAND, ME 04101

UTILITY & DRAINAGE DETAILS

PREPARED FOR  
FLAGG PARTNERS, LLC  
515 EAST 79TH STREET, APT 30E  
NEW YORK, NY 10075

DATE: 9/12/2017  
SCALE: N.T.S.  
DESIGNED: ARF  
JOB NO: 1719  
FILE: 1719 DETAILS.DWG  
SHEET C-6.1