

APPLICANT/OWNER:

FLAGG PARTNERS, LLC
C/O TED HOVIVIAN
515 EAST 79TH STREET, APT 30E
NEW YORK, NY 10075

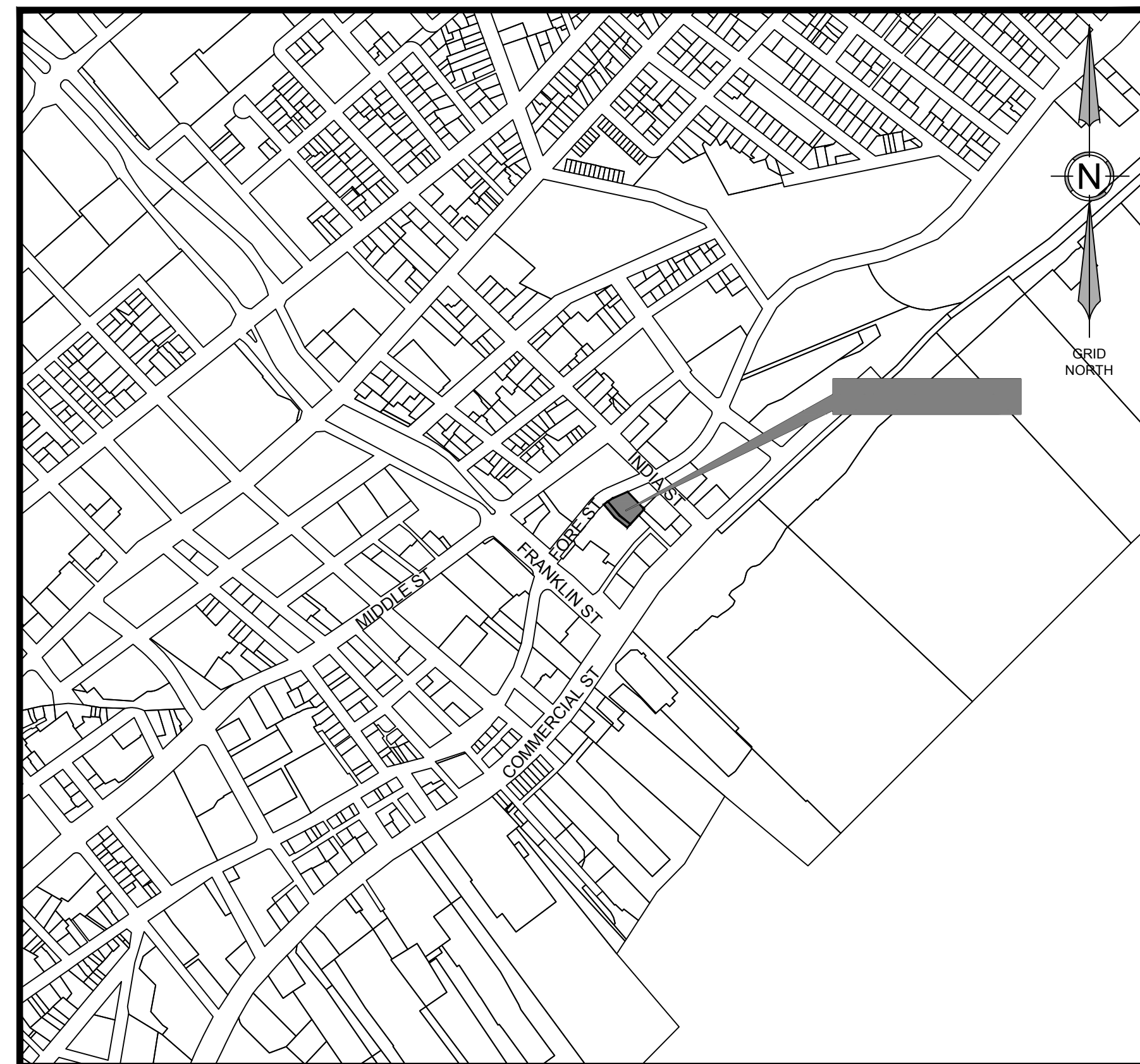
PROJECT PARCEL SITE

CITY OF PORTLAND TAX ASSESSOR'S MAP, BLOCK, & LOT NUMBERS
MAP 29 BLOCK N LOTS 8 &
BRADBURY COURT

SITE DEVELOPMENT PLANS FOR 208 FORE STREET PORTLAND, MAINE JUNE 2018 PERMIT DOCUMENTS

SHEET INDEX

C-1.0	COVER SHEET
C-1.1	GENERAL NOTES & LEGEND
C-2.0	BOUNDARY SURVEY
C-2.1	RECORDING PLAT - PENDING
C-2.2	EXISTING CONDITIONS & DEMOLITION PLAN
C-2.3	CONSTRUCTION MANAGEMENT PLAN
C-3.0	SITE PLAN
C-4.0	GRADING, DRAINAGE & EROSION CONTROL PLAN
C-4.1	EROSION & SEDIMENT CONTROL NOTES
C-5.0	UTILITY PLAN
C-6.0	SITE DETAILS
C-6.1	UTILITY & DRAINAGE DETAILS
L-1	LANDSCAPE PLAN
P-1	LIGHTING PHOTOMETRIC PLAN



LOCATION MAP

SCALE: 1"=50'

PERMITS

TYPE OF PERMIT	GOVERNING BODY	STATUS
SITE PLAN/SUBDIVISION APPROVAL	CITY OF PORTLAND PLANNING AUTHORITY CITY HALL, 389 CONGRESS STREET PORTLAND, ME 04101 TEL. 207.874.8722	SUBMITTED 06/20/2018
BUILDING PERMIT	CIT OF PORTLAND CODE ENFORCEMENT OFFICE CITY HALL, 389 CONGRESS STREET PORTLAND, ME 04101 TEL. 207.874.8900	TO BE SUBMITTED BY BUILDING CONTRACTOR
UTILITY / STREET OPENING	CITY OF PORTLAND PUBLIC SERVICES DIVISION 55 PORTLAND STREET PORTLAND, ME 04101 TEL. 207.874.8801	TO BE FILED BY PERMIT SITE CONTRACTOR

UTILITIES

SEWER
CITY OF PORTLAND
PUBLIC SERVICES DIVISION
55 PORTLAND STREET
PORTLAND, MAINE 04102
207.874.8850

WATER
PORTLAND WATER DISTRICT
22 DOUGLASS STREET
P.O. BOX 3553
PORTLAND, MAINE 04104
207.774.5961

ELECTRIC
CENTRAL MAINE POWER COMPANY
162 CANCO ROAD
PORTLAND, ME 04103
(207) 842-2367

TELEPHONE
FAIRPOINT COMMUNICATIONS
5 DAVIS FARM ROAD
P.O. BOX 11560
PORTLAND, MAINE 04103
888.984.1515

NATURAL GAS
UNITIL
376 RIVERSIDE INDUSTRIAL PARKWAY
PORTLAND, MAINE 04103
866.933.3821

DIG SAFE SYSTEM, INC.
TEL. 1-888-DIG-SAFE (344-7233)
WWW.DIGSAFE.COM

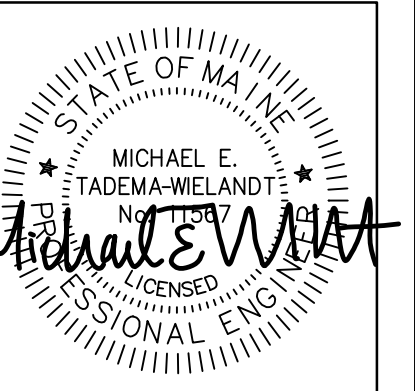
PREPARED BY:

CIVIL ENGINEER:
TERRADYN CONSULTANTS, LLC
565 CONGRESS STREET, SUITE 310
PORTLAND, MAINE 04101
207.926.5111
CONTACT: MICHAEL TADEMA-WIELANDT

ARCHITECT:
ARCHETYPE ARCHITECTS
48 UNION WARE
PORTLAND, ME 04101
207.772.6022
CONTACT: DAVID LLOYD

SURVEYOR:
NORTHEAST CIVIL SOLUTIONS, INC.
381 PAYNE ROAD
SCARBOROUGH, MAINE 04074
207.883.1000
TROY MCDONALD

ELECTRICAL/MECHANICAL ENGINEER:
BENNETT ENGINEERING
P.O. BOX 297
FREEPORT, MAINE 04032
207.865.9475
CONTACT: WILLIAM BENNETT



P. E. MICHAEL E. TADEMA-WIELANDT
DATE: 06-20-2018

NO.	DATE	REVISIONS
2	06-20-2018	MODIFIED BUILDING AND PARKING AND RE-SUBMITTED
1	04-26-2018	SUBMITTED TO THE CITY OF PORTLAND

565 CONGRESS STREET
SUITE 310
PORTLAND, ME 04102

41 CAMPUS DRIVE
SUITE 101
NEW GLOUCESTER, ME 04260

OFFICE: (207) 926-5111 FAX: (207) 221-1317
www.terradynconsultants.com

TERRADYN CONSULTANTS, LLC
Civil Engineering - Land Planning - Stormwater Design - Environmental Permitting

SHEET DESCRIPTION
208 FORE STREET
PORTLAND, ME 04101
COVER SHEET

PREPARED FOR
FLAGG PARTNERS, LLC
515 EAST 79TH STREET, APT 30E
NEW YORK, NY 10075

DATE:	9/12/2017
SCALE:	AS NOTED
DESIGNED:	ARF
JOB NO:	1719
FILE:	1719 COVER.DWG
SHEET	C-1.0

PRELIMINARY - NOT FOR CONSTRUCTION