

## **15 VERIFICATION OF PROPOSED HVAC EQUIPMENT**

### **15.1 OVERVIEW**

The following manufacturer cut sheets verify that all proposed HVAC and manufacturing equipment meets applicable state and federal emissions requirements.

### **15.2 ATTACHMENTS**

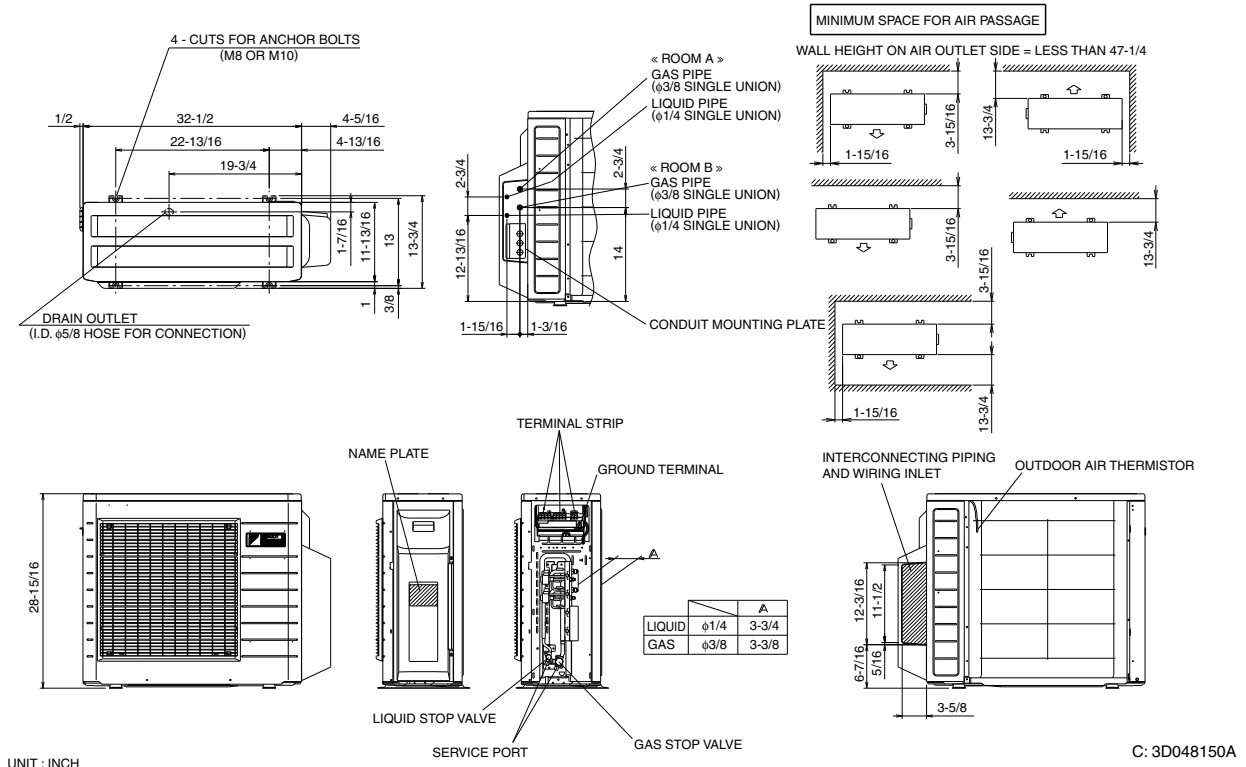
Attachment 15-A – HVAC Equipment Cut Sheets

**ATTACHMENT 15-A**

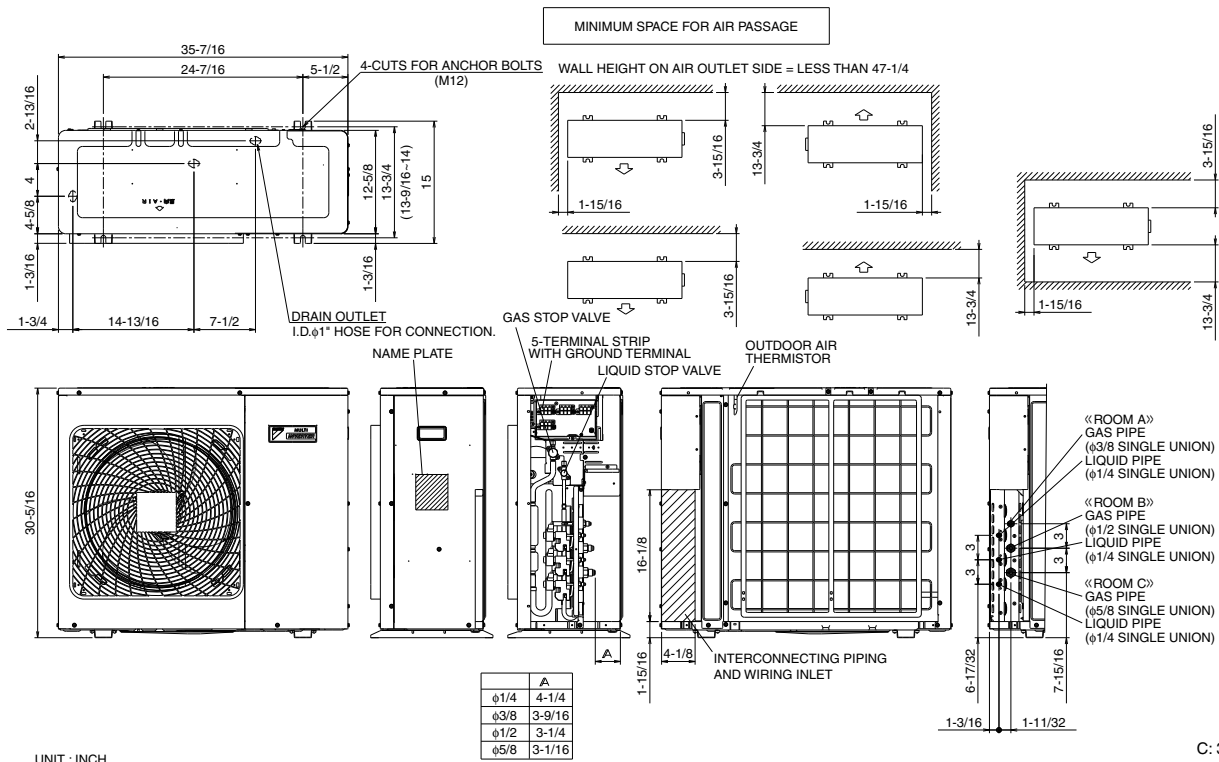
**HVAC Equipment Cut Sheets**

## 4.2 Outdoor Unit

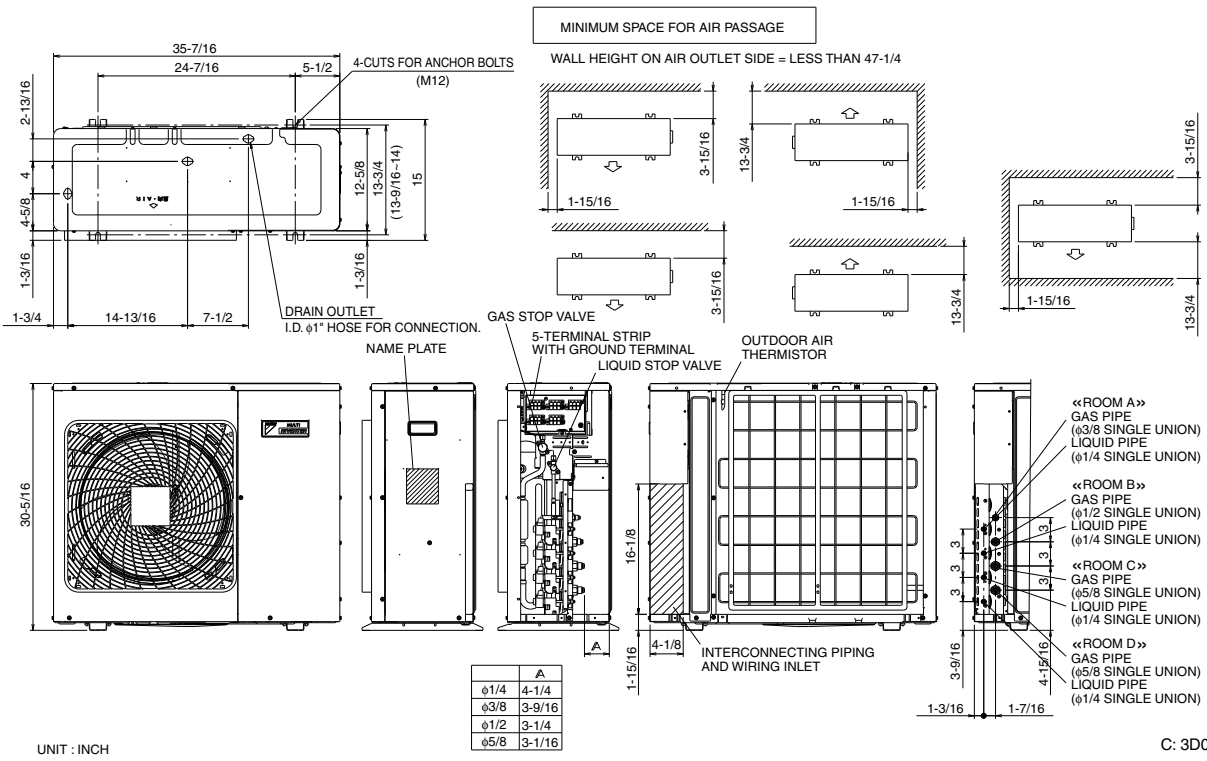
### 2MXS18GVJU



### 3MXS24JVJU

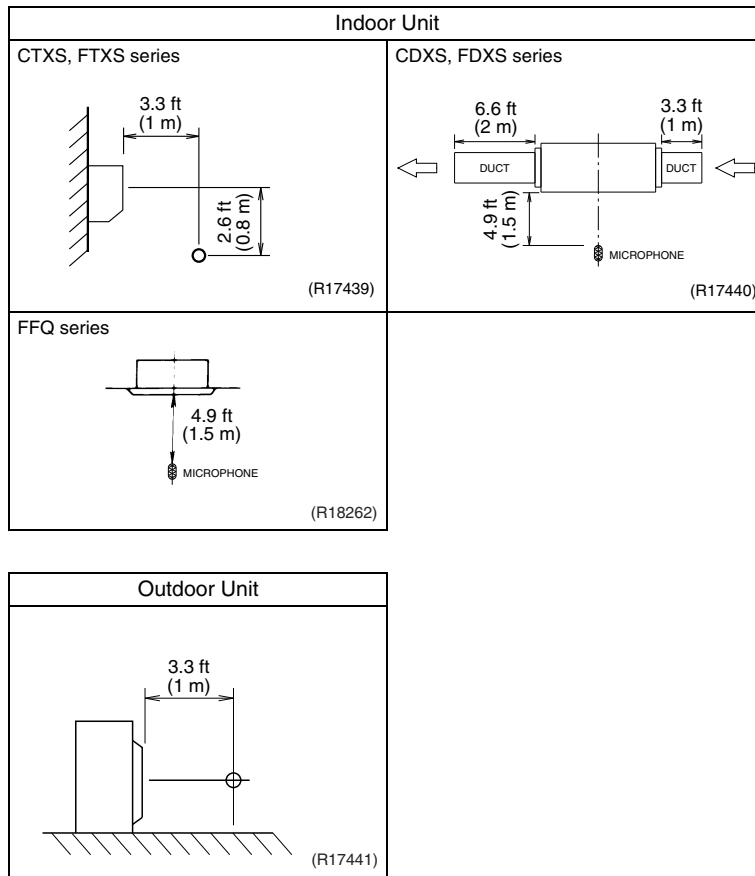


4MXS32GVJU



# 10. Sound Level

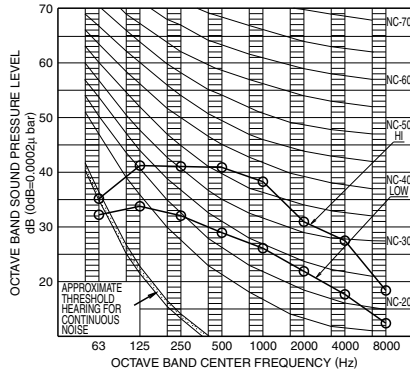
## 10.1 Measuring Location



- Note:**
1. Operation sound is measured in an anechoic chamber.
  2. The data are based on the conditions shown in the table below.

Cooling	Heating	Piping Length
Indoor ; 80°FDB (26.7°CDB) / 67°F WB (19.4°CWB) Outdoor ; 95°FDB (35°CDB) / 75°F WB (24°CWB)	Indoor ; 70°FDB (21°CDB) / 60°F WB (15.6°CWB) Outdoor ; 47°FDB (8.3°CDB) / 43°F WB (6°CWB)	16.4 ft (5 m)

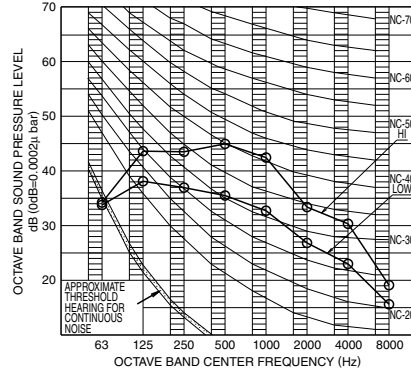
FFQ15LVJU



OVER ALL (dB)	
SCALE	HI    LOW
A	42.5    31.5
( B.G.N IS ALREADY RECTIFIED )	
OPERATING CONDITIONS	
POWER SOURCE    208/230V, 60Hz	
STANDARD CONDITION (JIS)	
4 DIRECTION DISCHARGE	

4D080698

FFQ18LVJU

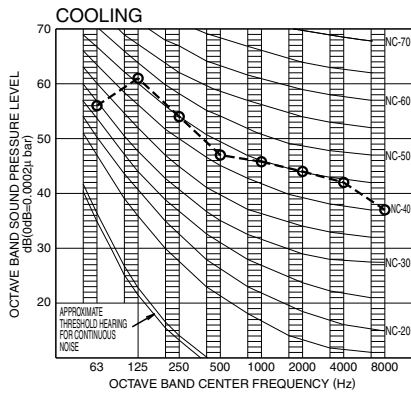


OVER ALL (dB)	
SCALE	HI    LOW
A	46.0    37.5
( B.G.N IS ALREADY RECTIFIED )	
OPERATING CONDITIONS	
POWER SOURCE    208/230V, 60Hz	
STANDARD CONDITION (JIS)	
4 DIRECTION DISCHARGE	

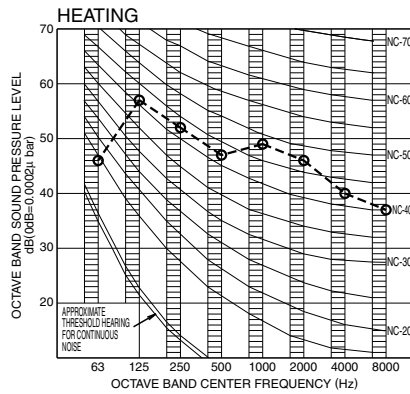
4D080699

10.2.2 Outdoor Unit

2MXS18GVJU



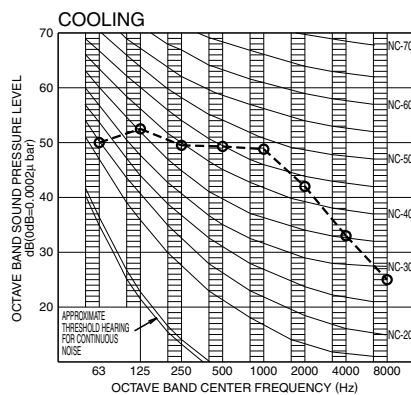
OVER ALL (dB)	
SCALE	60Hz 208/230V(H)
A	50
( B.G.N IS ALREADY RECTIFIED )	
OPERATING CONDITIONS	
POWER SOURCE    208/230V 60Hz	
JIS STANDARD (JIS9612)	
Cooling	



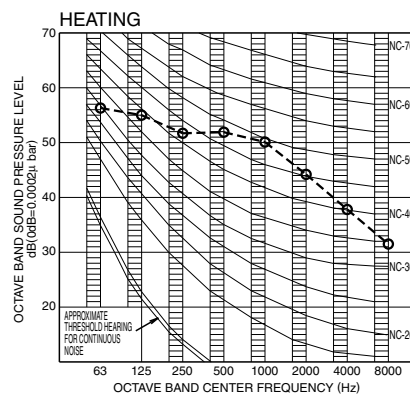
OVER ALL (dB)	
SCALE	60Hz 208/230V(H)
A	51
( B.G.N IS ALREADY RECTIFIED )	
OPERATING CONDITIONS	
POWER SOURCE    208/230V 60Hz	
JIS STANDARD (JIS9612)	
Heating	

3D048472A

3MXS24JVJU, 4MXS32GVJU



OVER ALL (dB)	
SCALE	60Hz 208/230V
A	52
( B.G.N IS ALREADY RECTIFIED )	
OPERATING CONDITIONS	
POWER SOURCE    208/230V 60Hz	
JIS STANDARD (JIS9612)	
Cooling	



OVER ALL (dB)	
SCALE	60Hz 208/230V
A	54
( B.G.N IS ALREADY RECTIFIED )	
OPERATING CONDITIONS	
POWER SOURCE    208/230V 60Hz	
JIS STANDARD (JIS9612)	
Heating	

3D058787A

