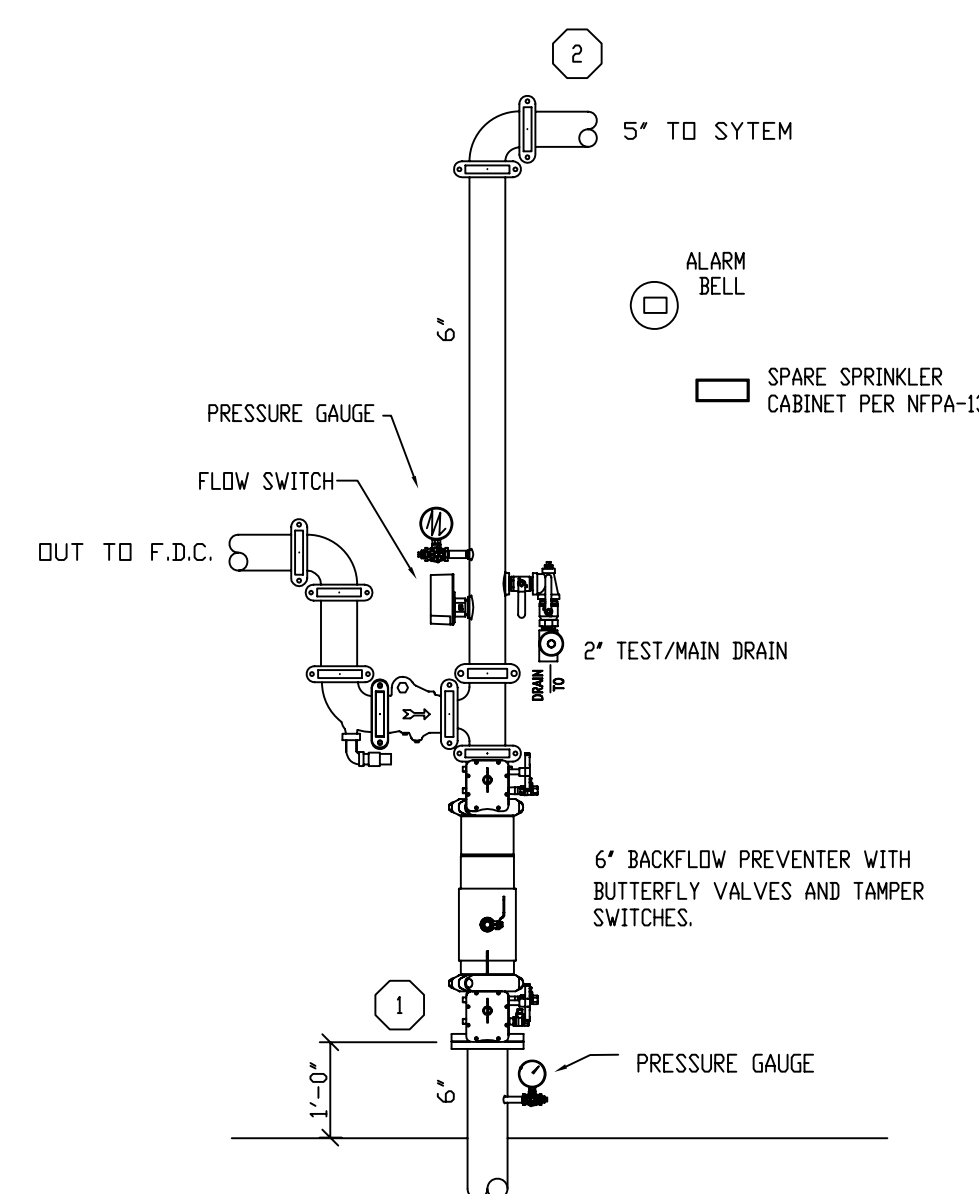


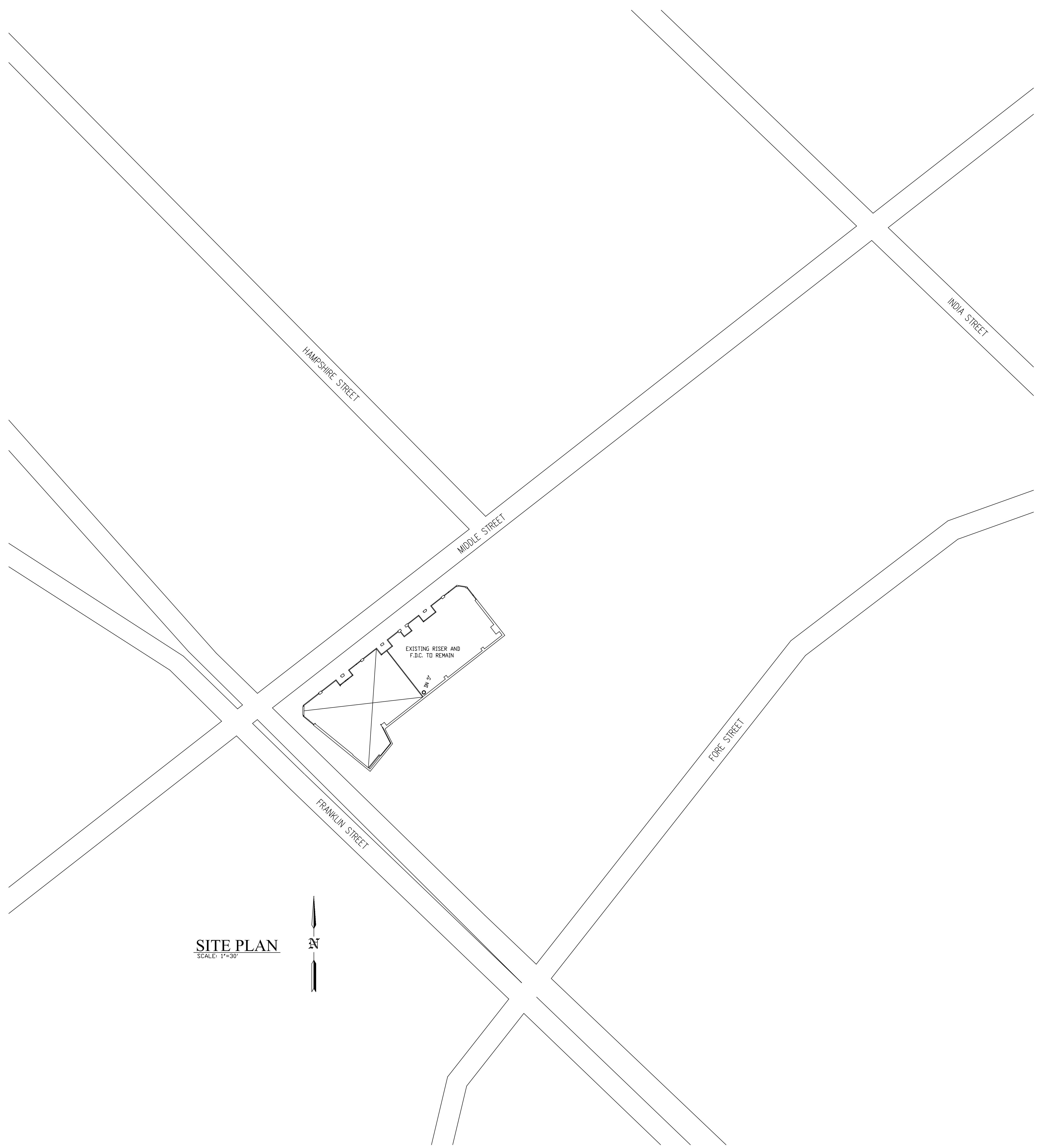
SECTION VIEW
SCALE: 1/4"=1'-0"

FIRE SPRINKLER GENERAL NOTES

OCCUPANCY: BUSINESS
 DESIGN STANDARD: NFPA-13 2010 LIGHT HAZARD AND ORDINARY GROUP I
 DESIGN DENSITY: PER SCHEDULED SYSTEM
 SPRINKLERS UPRIGHT: TYCO (AS NOTED ON PLAN)
 SPRINKLERS PENDENT: TYCO (AS NOTED ON PLAN)
 ESCUTCHEONS: WHITE 2 PIECE SEMI-REC.
 PIPING 1"-1 1/2": SCH. 40 BLACK STEEL WITH THREADED ENDS.
 PIPING 2"-6": SCH. 10 BLACK WITH GROOVED ENDS.
 HANGERS TO BE U.L. & FM APPROVED,
 AND SPACED PER NFPA-13
 COORDINATE FIRE SPRINKLER PIPING WITH OTHER TRADES.
 + DENOTES GROOVED COUPLING IN PIPE.
 RN = RISER NIPPLE.
 SG = SPRIG.
 DN = DROP NIPPLE.
 GC = GROOVED COUPLING.
 TOE = THREAD ONE END.
 GBE = GROOVE BOTH ENDS.
 PROTECTION OF THE SPRINKLER SYSTEM AGAINST FREEZING
 IS THE RESPONSIBILITY OF THE OWNER.



EXISTING RISER DETAIL
SCALE: N.T.S.



SITE PLAN
SCALE: 1"=30'

REVISIONS	NOTES	SPRINKLER TYPE	IDENTIFICATION NO.	MFG.	ESC.	MODEL	FINISH	ORIFICE	TEMP.	SYMBOL	QUANT.
		TOTAL SPRINKLERS THIS DRAWING									

STANDARD SYMBOLS	STANDARD SYMBOLS
<ul style="list-style-type: none"> ⊠ - POST INDICATOR VALVE ⊡ - KEY VALVE ⊞ - FIRE HYDRANT ⊞ - FIRE DEPT. CONNECTION ⊞ - O.S. & Y GATE VALVE ⊞ - SWING CHECK VALVE ⊞ - NEW UNDERGROUND ⊞ - EXIST UNDERGROUND 	<ul style="list-style-type: none"> ⊞ - ALARM CHECK VALVE ⊞ - RISER W/ALARM VALVE ⊞ - RISER W/DRY VALVE ⊞ - RISER W/ELEC. FLOW SWITCH ⊞ - RISER W/DELUGE VALVE ⊞ - WATER MOTOR BELL ⊞ - ELECTRIC BELL ⊞ - FLUSH FIRE DEPT. CONNECTION

INSPECTIONS
1. _____
2. _____
3. _____
4. _____
5. _____

HUGO'S RESTAURANT RENOVATION 2014 80-90 MIDDLE STREET PORTLAND, MAINE 04101		JOB No.	M0199
FIRE PROTECTION PLAN		DATE	12/2/14
FREEDOM FIRE PROTECTION, INC. 209 QUAKER RIDGE ROAD CASCO, MAINE 04015		DRAWN BY	MJN
SHEET No. FP-1 of 2		SCALE	AS NOTED
RESPONSIBLE MANAGING SUPERVISOR #348 CONTRACTOR LICENSE #295			