



Reviewed for Code Compliance
Inspections Division
Approved with Conditions

Date: 02/19/15

Page 5-2 | Component Specs

HOOD INFORMATION - Job# 2216390

HOOD NO.	TAG	MODEL	LENGTH	MAX. COOKING TEMP.	EXHAUST PLENUM RISER(S)		TOTAL SUPPLY CFM	HOOD CONSTRUCTION	HOOD CONFIG.	
					WIDTH	LENG.			END TO END	ROW
1	Eventide	54E4	8' 0.00"	600 Deg.	18"	24"	960	430 SS Where Exposed	ALONE	ALONE
2	Peppercorn	54E4	10' 0.00"	600 Deg.	18"	26"	1470	430 SS Where Exposed	ALONE	ALONE
3	Combi	54E4	4' 0.00"	450 Deg.	6"	7"	380	430 SS Where Exposed	ALONE	ALONE

HOOD INFORMATION

HOOD NO.	TAG	TYPE	FILTER(S)		EFFICIENCY @ 9 MICRONS	QTY	TYPE	WIRE GUARD	LOCATION	UTILITY CABINET(S)		FIRE SYSTEM PIPING	HOOD SYSTEM-HANGING WIGHT
			QTY	HEIGHT						SIZE	MODEL #		
1	Eventide	SS Baffle with Handles	5	16"	30%	3	-55 Series E26	NO	Left	DCV-E111	1 LIGHT	NO	566 LBS
2	Peppercorn	SS Baffle with Handles	7	16"	30%	3	Screw in Compact	NO			1 Fan	NO	579 LBS
3	Combi	SS Baffle with Handles	2	16"	30%	2	L95 Series E26	NO	Left			NO	393 LBS

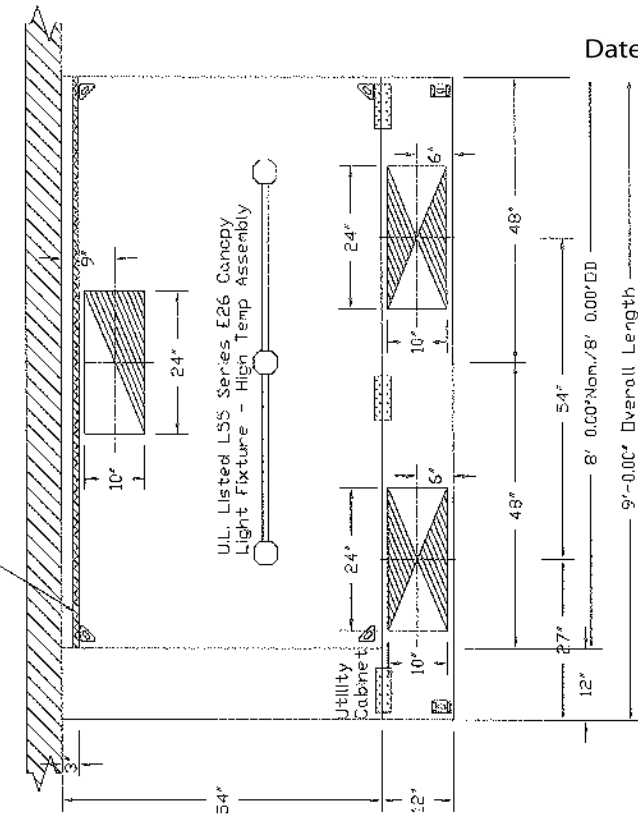
HOOD OPTIONS

HOOD NO.	TAG	OPTION
1	Eventide	FIELD WRAPPER 18.00' High X 108.00' Long 430 SS
		RIGHT SIDE SPLASH 80.00' High X 54.00' Long 430 SS
		BACKSPLASH - INSIDE CORNER 80.00' High X 2.00' Leg Length 430 SS
		RIGHT QUARTER END PANEL 23' Top Width, 0' Bottom Width, 23' High 430 SS
		LEFT QUARTER END PANEL 23' Top Width, 0' Bottom Width, 23' High 430 SS
		BALANCE DAMPERS
		INSULATION FOR BACK OF HOOD
2	Peppercorn	FIELD WRAPPER 18.00' High X 183.00' Long 430 SS
		RIGHT SIDE SPLASH 80.00' High X 54.00' Long 430 SS
		LEFT SIDE SPLASH 80.00' High X 54.00' Long 430 SS
		RIGHT END STANDOFF (FINISHED) 1' Wide 54' Long Insulated
		LEFT END STANDOFF (FINISHED) 1' Wide 54' Long Insulated
		BACKSPLASH - INSIDE CORNER 80.00' High X 2.00' Leg Length 430 SS
		BACKSPLASH - INSIDE CORNER 80.00' High X 2.00' Leg Length 430 SS
		RIGHT QUARTER END PANEL 23' Top Width, 0' Bottom Width, 23' High 430 SS
		LEFT QUARTER END PANEL 23' Top Width, 0' Bottom Width, 23' High 430 SS
		BALANCE DAMPERS
		INSULATION FOR BACK OF HOOD
3	Combi	FIELD WRAPPER 16.00' High X 61.00' Long 430 SS
		BACKSPLASH 80.00' High X 54.00' Long 430 SS
		RIGHT SIDE SPLASH 80.00' High X 54.00' Long 430 SS
		RIGHT END STANDOFF (FINISHED) 1' Wide 54' Long Insulated
		BACKSPLASH - INSIDE CORNER 80.00' High X 2.00' Leg Length 430 SS
		RIGHT QUARTER END PANEL 23' Top Width, 0' Bottom Width, 23' High 430 SS
		LEFT QUARTER END PANEL 23' Top Width, 0' Bottom Width, 23' High 430 SS
		BALANCE DAMPERS
		INSULATION FOR BACK OF HOOD

PERFORATED SUPPLY PLENUM(S)

HOOD NO.	TAG	POS.	LENGTH	WIDTH	HEIGHT	TYPE	RISERS		S.P.
							LENG.	DIA.	CFM
1	Eventide	Front	108"	12"	6"	MUA	10"	24"	460 0.109'
						MUA	10"	24"	460 0.109'
2	Peppercorn	Front	122"	14"	6"	MUA	12"	28"	735 0.175'
						MUA	12"	28"	735 0.175'
3	Combi	Front	61"	9"	6"	MUA	6"	28"	360 0.072'

1" LAYER OF INSULATION FACTORY INSTALLED IN INTERNAL BACK STANDOFF. MEETS 0 INCH REQUIREMENTS FOR CLEARANCE TO COMBUSTIBLE SURFACES.



PLAN VIEW - Hood #1 (Eventide)
8' 0.00" LONG 54.24ND-2-PSP-F

JOB Hugo's (FI)
LOCATION LEVI-
DATE 12/31/20
DWG # 1
REV.

CAPTIVEAIR





Reviewed for Code Compliance
Inspections Division
Approved with Conditions

Date: 02/19/15

JOB	Hugo's (fir)
LOCATION	LEWIS
DATE	12/31/20
DWG #	2
REV.	

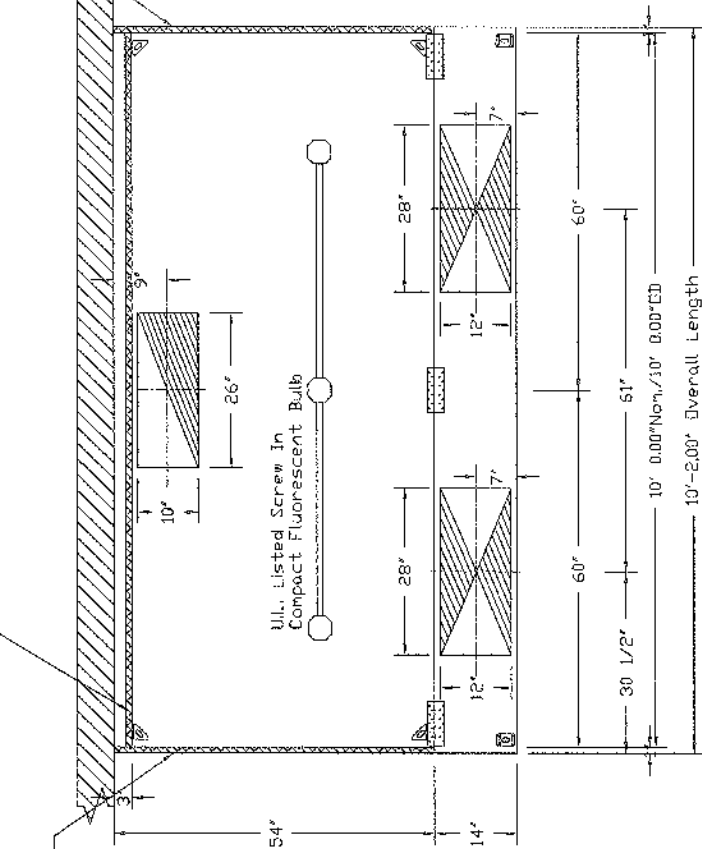
CAPTIVEAIRE



1" LAYER OF INSULATION FACTORY
INSTALLED IN INTERNAL BACK STANDOFF.
MEETS 3" INCH REQUIREMENTS FOR
CLEARANCE TO COMBUSTIBLE SURFACES.

1" LAYER OF INSULATION
FACTORY INSTALLED IN
1.00" END STANDOFF MEETS
0" REQUIREMENTS CLEARANCE
TO COMBUSTIBLE SURFACES.

1" LAYER OF INSULATION
FACTORY INSTALLED IN
1.00" END STANDOFF MEETS
0" REQUIREMENTS CLEARANCE
TO COMBUSTIBLE SURFACES.



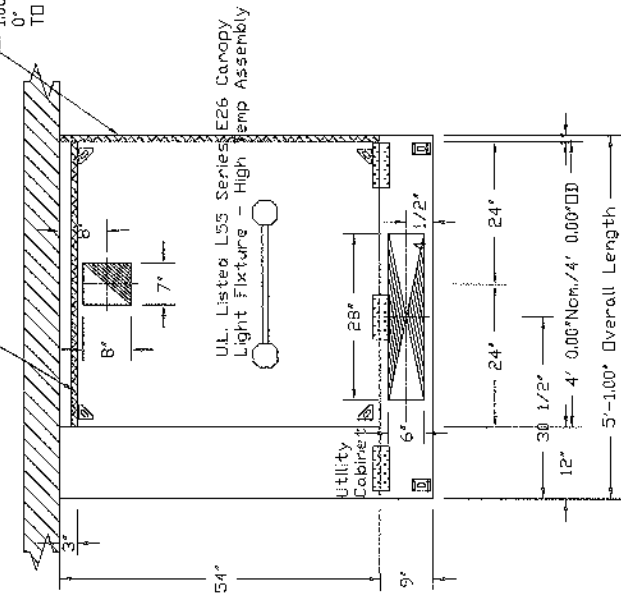
PLAN VIEW - Hood #2 (Peppercorn)
10' 0.00" LONG 5424ND-2-PSP-E

Page 6

Page 7

1" LAYER OF INSULATION FACTORY
INSTALLED IN INTERNAL BACK STANDOFF
MEETS 6" INCH REQUIREMENTS FOR
CLEARANCE TO COMBUSTIBLE SURFACES.

1" LAYER OF INSULATION
FACTORY INSTALLED IN
100% END STANDOFF MEETS
6" REQUIREMENTS CLEARANCE
TO COMBUSTIBLE SURFACES.



PLAN VIEW - Hood #3 (Combi)
4' 0.00" LONG 5'-24" ND-2-PSP-F



Reviewed for Code Compliance
Inspections Division
Approved with Conditions

Date: 02/19/15

JOB	Hugo's (Fir)
LOCATION	LEWIS
DATE	12/31/20
DWG #	3
REV	

CAPTIVE FIRE





Reviewed for Code Compliance
Inspections Division
Approved with Conditions

Date: 02/19/15

JOB No.	151
LOCATION	LEVIS
DATE	12/31/20
DWG #	4
REV.	

CAPTIVEAIR



page 8

L55 SERIES E26 CANOPY LIGHT FIXTURE - HIGH TEMP ASSEMBLY, INCLUDES CLEAR THERMAL AND SHOCK RESISTANT GLOBE (L55 FIXTURE)

FIELD WRAPPER 18.00" HIGH (SEE HOOD OPTIONS TABLE)

ATTACHING PLATES
SUPPLY RISER WITH VOLUME DAMPER
23.5% OPEN STAINLESS STEEL PERFORATED PANEL

23.74"
6"
24" NOM.

54"

BALANCE DAMPERS
HANGING ANGLE

16" SS BAFFLE WITH HANDLES AND HOOK INSTALLED IN 3" INTERNAL STANDOFF. MEETS 0 INCH REQUIREMENTS FOR CLEARANCE TO COMBUSTIBLE SURFACES.

IT IS THE RESPONSIBILITY OF THE ARCHITECT/OWNER TO ENSURE THAT THE HOOD CLEARANCE FROM LIMITED-COMBUSTIBLE AND COMBUSTIBLE MATERIALS IS IN COMPLIANCE WITH LEGAL CODE REQUIREMENTS.

GREASE DRAIN WITH REMOVABLE CUP
LEFT- AND RIGHT QUARTER END PANELS

48.0" MAX

23"
23"
BACKSLASH 60.00" HIGH X 108.00" LONG

80" AFF REFERENCE

EQUIPMENT BY OTHERS

SECTION VIEW - MODEL 5424ND-2--PSP-F
HOOD - #1 (Eventide)



Reviewed for Code Compliance
Inspections Division
Approved with Conditions

Date: 02/19/15

JOB	Hugo's (fkr)
LOCATION	LEVIS
DATE	12/31/20
DWG #	5
REV.	

CAPTIVEAIR



SCREW IN COMPACT FLUORESCENT BULB, L55 SERIES E26 CANDY LIGHT FIXTURE - HIGH TEMP ASSEMBLY, INCLUDES CLEAR THERMAL AND SHOCK RESISTANT GLOBE

FIELD WRAPPER 18.00" HIGH (SEE HOOD OPTIONS TABLE)

ATTACHING PLATES
SUPPLY RISER WITH VOLUME DAMPER
28.5% OPEN STAINLESS STEEL PERFORATED PANEL

2.3744
6"
24" NOM.

54"

1 1/4"

18"

48.0" MAX

80" AFF REFERENCE

23"

23"

BACKSPLASH 80.00" HIGH X 183.80" LONG

EQUIPMENT BY OTHERS

BALANCE DAMPERS
HANGING ANGLE

16" SS BAFFLE WITH HANDLES AND HOOK INSTALLED IN 3" INTERNAL STANDOFF. MEETS 0 INCH REQUIREMENTS FOR CLEARANCE TO COMBUSTIBLE SURFACES.

IT IS THE RESPONSIBILITY OF THE ARCHITECT/DRAWER TO ENSURE THAT THE HOOD CLEARANCE FROM LIMITED-COMBUSTIBLE AND COMBUSTIBLE MATERIALS IS IN COMPLIANCE WITH LOCAL CODE REQUIREMENTS.

GREASE DRAIN WITH REMOVABLE CLIP LEFT AND RIGHT QUARTER END PANELS

SECTION VIEW -- MODEL 5424ND-2--PSP--F HOOD -- #2 (Peppercorn)

Page 9



Reviewed for Code Compliance
Inspections Division
Approved with Conditions

Date: 02/19/15

JOB	Hugg's (F)
LOCATION	LEVEL
DATE	12/31/20
DWG #	6
REV	

CAPTIVEAIRE



L55 SERIES E26 CANOPY LIGHT FIXTURE - HIGH TEMP ASSEMBLY, INCLUDES CLEAR THERMAL AND SHOCK RESISTANT GLOBE (L55 FIXTURE)

FIELD WRAPPER 1800" HIGH (SEE HOOD OPTIONS TABLE)

ATTACHING PLATES
SUPPLY RISER WITH VOLUME DAMPER
235% OPEN STAINLESS STEEL PERFORATED PANEL

54"
24" NOM.
37.4"
6"
9"
18"
48.0" MAX
80" AFF REFERENCE
23"
23"
BACKSPLASH 80.00" HIGH X 61.00" LONG
EQUIPMENT BY OTHERS

BALANCE DAMPERS

HANGING ANGLE

16" SS BAFFLE WITH HANDLES AND HOOK INSTALLED IN 3" INTERNAL STANDOFF, MEETS 0 INCH REQUIREMENTS FOR CLEARANCE TO COMBUSTIBLE SURFACES.

IT IS THE RESPONSIBILITY OF THE ARCHITECT/OWNER TO ENSURE THAT THE HOOD CLEARANCE FROM LIMITED-COMBUSTIBLE AND COMBUSTIBLE MATERIALS IS IN COMPLIANCE WITH LOCAL CODE REQUIREMENTS.

GREASE DRAIN WITH REMOVABLE CUP

LEFT AND RIGHT QUARTER END PANELS

SECTION VIEW -- MODEL 5424ND-2-PSP-F
HOOD -- #3 (Combi)

Page 10



Reviewed for Code Compliance
Inspections Division
Approved with Conditions

Date: 02/19/15

JOB Hugo's (Fl)
LOCATION LEWIS
DATE 12/31/20
DWG # 7
REV.

CAPTIVEAIR



page 11

EXHAUST FAN INFORMATION - Job#2216390

FAN UNIT NO.	TAG	FAN UNIT MODEL #	CFM	ESP.	RPM	H.P.	B.H.P.	Ø	VOLT	FLA	VOLT FLA	DISCHARGE VELOCITY	WEIGHT (LBS.)/SIZES
1	Hugo's / Eventide	NC43HPTA	5400	3.500	718	3.000	2.1520	3	208	9.5			419 13.5
3		USR20BD-RM	3350	2.000	1301	3.000	2.1380	3	208	9.5		1441 FPH	500 26

MUA FAN INFORMATION - Job#2216390

FAN UNIT NO.	TAG	FAN UNIT MODEL #	BLOWER	HOUSING	CFM	ESP.	RPM	H.P.	B.H.P.	Ø	VOLT	FLA	WEIGHT (LBS.)/SIZES
2		A1-D250-G10	G10	A1-D250	2750	0.650	1390	2.000	1.9090	3	208	6.2	784 28

GAS FIRED MAKE-UP AIR UNITS

FAN UNIT NO.	TAG	ACTUAL AIR DENSITY	INPUT AIR BTUs	OUTPUT AIR BTUs	TEMP. RISE	REQUIRED INPUT GAS PRESSURE	GAS TYPE
2		NO	274492	252450	85 deg F	7 in. w.c. - 1/4 in. w.c.	Natural

FAN OPTIONS

FAN UNIT NO.	TAG	OPTION (Qty. - Descr.)
1	Hugo's / Eventide	1 - Grease Box
		1 - Hinge Kit (HD) - Ships Loose for Curb Supplied by Others
		1 - 3 Year Extended Motor Warranty
		1 - Extra Set of Belts
		1 - Fan Base Gasket Seal - For Grease Ducts
		1 - AC Interlock Relay - 24VAC Coil
		1 - Motorized Backdraft Damper For A1-D Housing
		1 - Full Crating For Commercial Heater
		1 - Low Fire Start
		1 - Inlet Pressure Gauge, 0-35"
		1 - Manifold Pressure Gauge, -5 to 15" wc
		1 - Insulation Option For VBank Filter section
		1 - 3 Year Extended Motor Warranty
		1 - Extra Set of Belts
		1 - 3 Year Indoor Hanging Option - Includes 2 HSARS Hanger Spring Isolators per Up-Strut
		1 - Separate 120V Wiring Package (Required and used only for DCV or Prescribe with VFD) - Three Phase Only
		1 - Opposite Side Heater Controls
		1 - B1 - Discharge Orientation Vertical Upper Left - CW Inlet Side.
		1 - B120 - Inlet Connection Standard 20" Flanged Grease Duct.
		1 - Full Crating For Exhaust Fans
		1 - Utility Set Grease Cup
		1 - 3 Year Extended Motor Warranty
		1 - Extra Set of Belts
		1 - B120 - 24" Discharge Extension.
		1 - Utility Set - Spring Vibration Isolators - B120 Truv B121 / Equivalent Sized Utility Set - Indoor/Outdoor use.

FAN ACCESSORIES

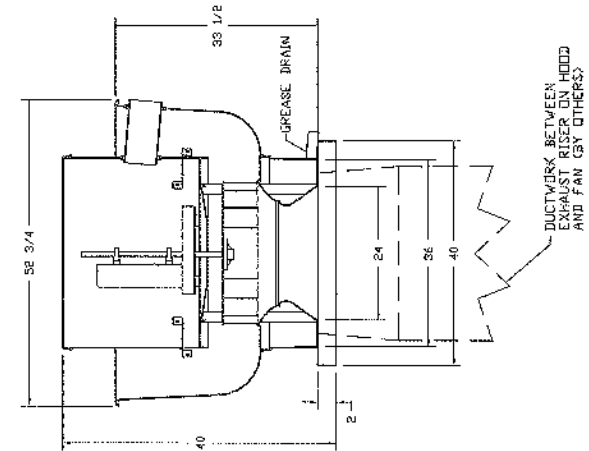
FAN UNIT NO.	TAG	EXHAUST	SUPPLY
1	Hugo's / Eventide	GREASE GRAVITY DAMPER MOUNT YES	GRAVITY DAMPER MOUNT YES
2		YES	YES
3		YES	YES

CURB ASSEMBLIES

NO.	DN FAN	WEIGHT	ITEM	SIZE
1	3	LBS	Exhaust Adapter	From 29500'sq To 36500'sq x 9000"H
3	# 3	50 LBS	Curb	4000"W x 48000"L x 20000"H

page 12

FAN #1 NCAS09PFA - EXHAUST FAN (HUGG'S / EVENTIDE)



FEATURES:

- ROOF MOUNTED FANS
- RESTAURANT MODEL
- UL705 AND UL762
- AMCA SOUND AND AIR CERTIFIED
- WIRING FROM MOTOR TO DISCONNECT SWITCH
- WEATHERPROOF DISCONNECT
- HIGH HEAT OPERATION 300°F (149°C)
- GREASE CLASSIFICATION TESTING

ABNORMAL TEMPERATURE TEST
 EXHAUST FAN MUST OPERATE CONTINUOUSLY WHILE EXHAUST MOTOR IS BEING TESTED. THERMAL EQUILIBRIUM, AND WITHOUT ANY DETERIORATING EFFECTS TO THE FAN WHICH WOULD CAUSE UNSAFE OPERATION.

ABNORMAL - FLARE-UP TEST
 EXHAUST FAN MUST OPERATE CONTINUOUSLY WHILE EXHAUST MOTOR IS BEING TESTED. 15 MINUTES WITHOUT THE FAN BECOMING DAMAGED TO ANY EXTENT THAT COULD CAUSE AN UNSAFE CONDITION.

OPTIONS

- GREASE BOX
- HINGE KIT (HD)- SHIPS LOOSE FOR CURB SUPPLIED BY OTHERS
- 3 YEAR EXTENDED MOTOR WARRANTY
- EXTRA SET OF BELTS
- FAN BASE CERAMIC SEAL - FOR GREASE DUCTS



Reviewed for Code Compliance
 Inspections Division
 Approved with Conditions

Date: 02/19/15

JOB HUGG'S (F)
LOCATION LEVI
DATE 12/31/20
DWG # 8
REV.

CAPTIVEAIR

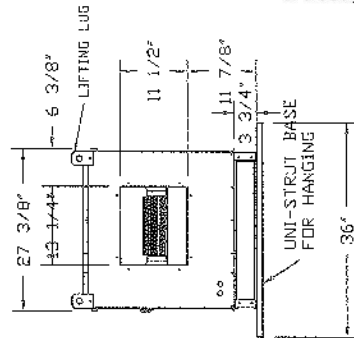
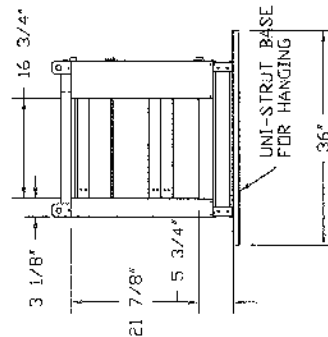
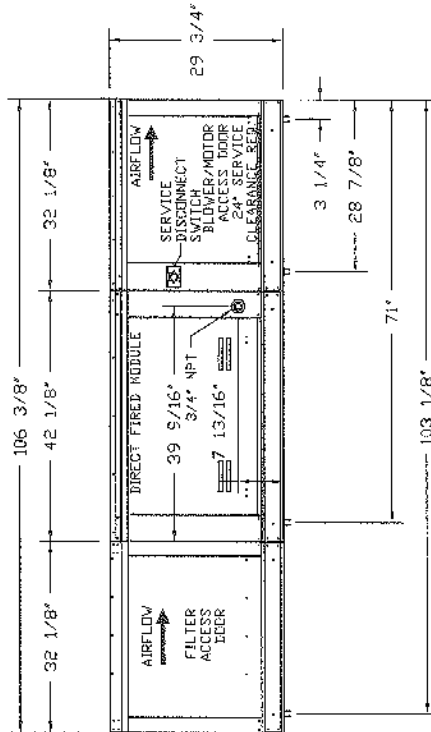
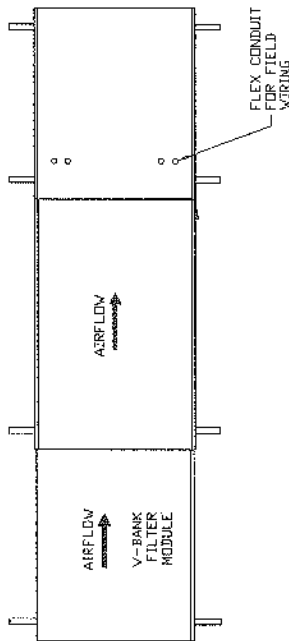


Page 13

- FAN #2 A1-D250-G10 - HEATER
- 1. DIRECT GAS FIRED HEATED MAKE UP AIR UNIT WITH 10" BLOWER
- 2. V-BANK EZ FILTERS - INDOOR
- 3. SIDE DISCHARGE - AIR FLOW LEFT -> RIGHT
- 4. COOLING INTERLOCK RELAY, 24VAC COIL, 120V CONTACTS, LOCKS OUT BURNER CIRCUIT WHEN AC IS ENERGIZED.
- 5. MOTORIZED BACK DRAFT DAMPER 16" X 18" FOR SIZE 1 STANDARD & MODULAR DIRECT FIRED HEATERS W/EXTENDED SHAFT,
- STANDARD GALVANIZED CONSTRUCTION, 3/4" REAR FLANGE, LF120S ACTUATOR INCLUDED
- 6. FULL GRATING FOR COMMERCIAL HEATERS FOR SHIPPING.
- 7. LOW FIRE START - ALLOWS THE BURNER CIRCUIT TO ENERGIZE WHEN THE MODULATION CONTROL IS IN A LOW FIRE POSITION.
- 8. GAS PRESSURE GAUGE, 0-35", 2.5" DIAMETER, 1/4" THREAD SIZE
- 9. GAS PRESSURE GAUGE, -5 TO +15 INCHES W.C., 2.5" DIAMETER, 1/4" THREAD SIZE
- 10. "INSULATION" FOR V-BANK INTAKE OPTION.
- 11. 3 YEAR EXTENDED WARRANTY FOR FAN MOTOR. PARTS ONLY, DOES NOT INCLUDE LABOR.
- 12. EXTRA SET OF V-BELTS. ONLY TO BE ORDERED AS FAN OPTION AT TIME FAN IS ORDERED.
- 13. INDOOR HANGING CRADLE FOR THE SIZE 1 DIRECT FIRED UNIT. 2 HSA125 HANGING ISOLATORS PER UNI-STRUT INCLUDED.
- 14. SEPARATE 120VAC WIRING PACKAGE FOR MAKE-UP AIR UNITS. OPTION MUST BE SELECTED WHEN MOUNTING VFD IN PREWIRED PANEL OR WITH DEV PACKAGE. PROVIDES SEPARATE 120VAC INPUT TO SUPPLY FAN. THIS 120V SIGNAL MUST BE RUN BY ELECTRICIAN FROM 30V TO MUA SWITCH.
- 15. MOUNT MOTOR AND CONTROLS ON OPPOSITE SIDE OF HEATER.

SUPPLY SIDE HEATER INFORMATION*

WINTER TEMPERATURE = 39°F. TEMP. RISE = 85°F.
 BTUS CALCULATED OFF STANDARD AIR DENSITY
 OUTPUT BTUS AT ALTITUDE OF 0.0 FT. = 25245G
 INPUT BTUS AT ALTITUDE OF 0.0 FT. = 27440E

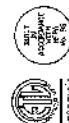


Reviewed for Code Compliance
 Inspections Division
 Approved with Conditions

Date: 02/19/15

JOB Hugo's (P)	LOCATION LEV1
DATE 12/31/20	DWG # 9
REV.	

CAPTIVE AIR





Reviewed for Code Compliance
Inspections Division
Approved with Conditions

Date: 02/19/15

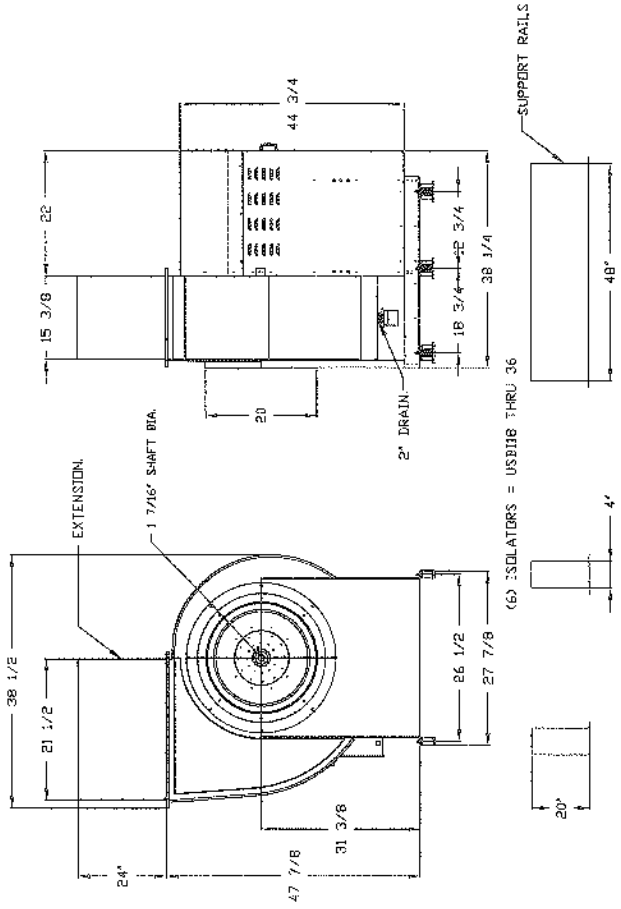
JOB No. 03-011
LOCATION LEV. 1
DATE 12/31/20
DWG # 10
REV.

CAPTIVEAIR



FAN #3 USB20DD-R4 - EXHAUST FAN

Page 14



FEATURES:

- 300F MOUNTED FANS
- RESTAURANT MODEL
- UL705
- UL766
- HIGH HEAT OPERATION DIRECT DRIVE 350F (176°C)
- HIGH HEAT OPERATION BELT DRIVE 350F (176°C)
- HEAT SLINGER
- GREASE CLASSIFICATION TESTING
- 2" DRAIN
- MOTOR WEATHER COVER
- FULLY SEALED SCROLL HOUSING
- SCROLL ACCESS DOOR
- FLANGE 1 1/4" - 1" THRU 20.
- FLANGE 2" - 24 THRU 36.

OPTIONS:

- B1 - DISCHARGE ORIENTATION VERTICAL UPPER LEFT - CW INLET SIDE.
- B120 - INLET CONNECTION STANDARD 20" FLANGED GREASE DUCT.
- FULL CRATING FOR EXHAUST FANS
- UTILITY SET GREASE CUP
- 3 YEAR EXTENDED MOTOR WARRANTY
- EXTRA SET OF BELTS
- B120 - 24" DISCHARGE EXTENSION.
- UTILITY SET SPRING VIBRATION ISOLATORS - B120 THRU B124 / EQUIVALENT

EXHAUST FAN MUST BE OPERATED CONTINUOUSLY OUTDOOR USE.

CAUTION: WHILE EXHAUSTING AIR AT 350F (176°C) UNTIL ALL FAN PARTS HAVE REACHED THERMAL EQUILIBRIUM, AND WITHOUT ANY DETERIORATING EFFECTS TO THE FAN WHICH WOULD CAUSE UNSAFE OPERATION



Reviewed for Code Compliance
 Inspections Division
 Approved with Conditions

Date: 02/19/15

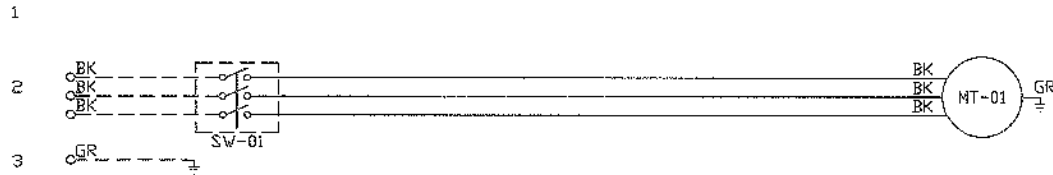
Exhaust Fan Wiring

JOB 2216390 - Hugo's (final package) r1

DRAWING NUMBER EXH2216390-1

SHIP DATE 12/31/2014

MODEL NCA30HPFA



Component Identification		
Label	Description	Location
MT-01	Fan Motor	[2]
SW-01	Main disconnect switch	[2]

MOTOR INFO
 EXHAUST 3HP-208V-3P-9.5FLA

ELECTRICAL INFORMATION
 MOTOR/CTRL MCA: 11.9A
 MOTOR/CTRL MOP: 20A

NOTES
 ---- DENOTES FIELD WIRING
 _____ DENOTES INTERNAL WIRING

WIRE COLOR

BK - BLACK	YW - YELLOW
BL - BLUE	GR - GREEN
BR - BROWN	GY - GRAY
OR - ORANGE	PR - PURPLE
RD - RED	PK - PINK
WH - WHITE	

page 15



Reviewed for Code Compliance
Inspections Division
Approved with Conditions

Date: 02/19/15

Direct Fired Heater Wiring

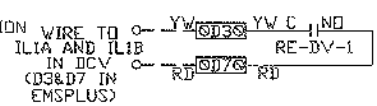
JOB 2216390 - Hugo's (final package) r1

DRAWING NUMBER DF2216390-2

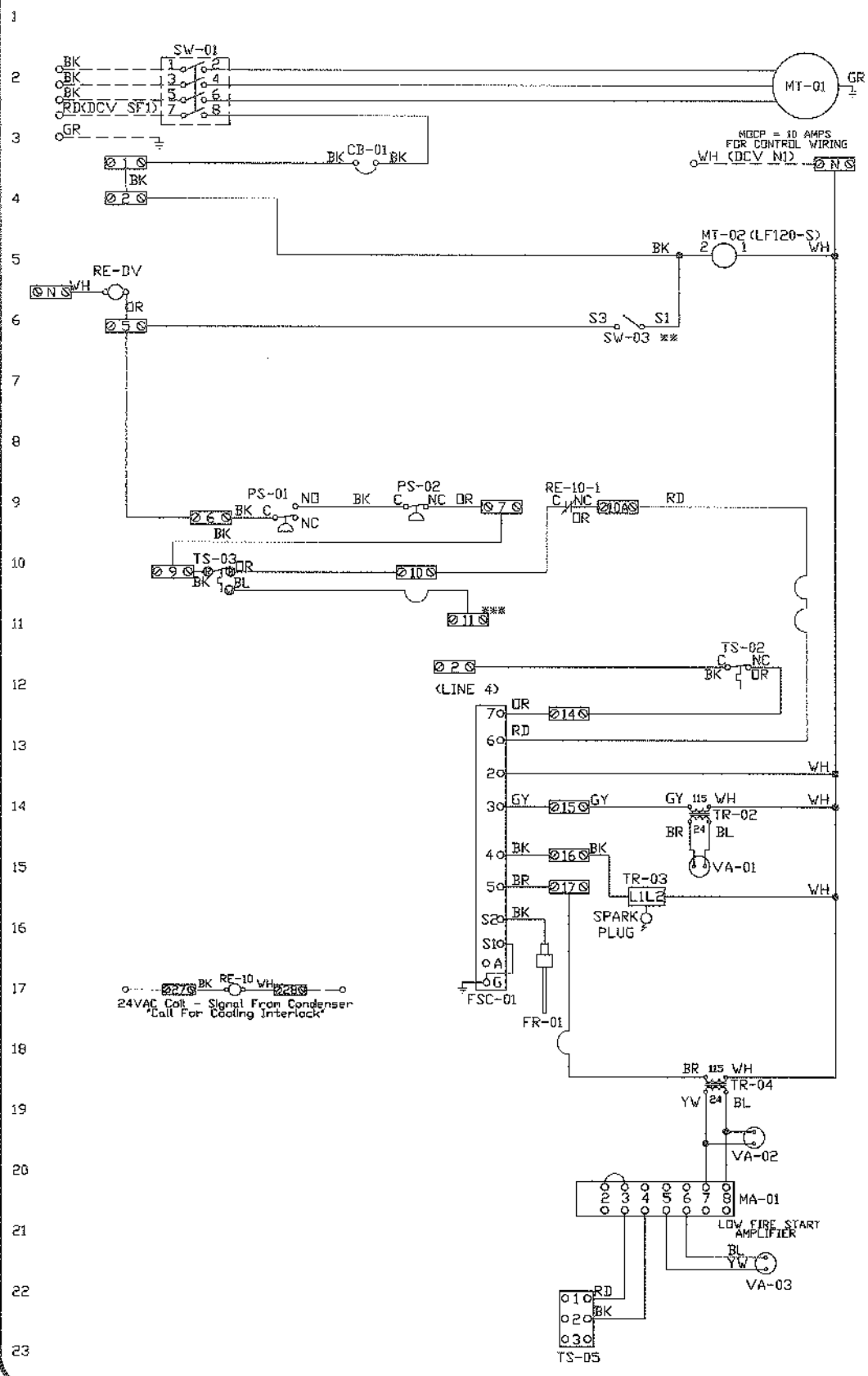
SHIP DATE 12/31/2014

MODEL A1-D.250-G10

ATTENTION ELECTRICIAN
DROP FOR DISCONNECT CONNECTION WIRE TO
IS FACTORY SUPPLIED IL1A AND IL1B
CONNECT POWER TO THE DROP (D3&D7 IN
EMSPUS)



Motor
Disch



DCV Wiring
24V AC Interlock Relay

Label	Component Identification	Location
CB-01	Circuit breaker (2amp)	130
FR-01	Flame rod	116
FSC-01	Fireeye FSC	111-140
MA-01	Modulating amplifier	119
MT-01	Supply motor	120
MT-02	Damper motor	150
PS-01	Low Airflow Switch	190
PS-02	High Airflow Switch	190
RE-DV	DCV Relay	110E50
RE-10	AC Interlock Relay	110C170
SW-01	Main disconnect switch	120
SW-03	Damper end limit switch	140
TR-01	Power transformer (200v/63)	112
TR-02	Power transformer (20v)	112
TR-03	Ignition transformer	114
TR-04	Power transformer (20v)	117
TS-02	High temp limit switch	110
TS-03	Intake Air Sensor	110
TS-05	Discharge Air Sensor	120
VA-01	Pilot gas valve	113
VA-02	Main gas valve	118
VA-03	Modulating gas valve	120

MOTOR INFO
SUPPLY 2HP-208V-3P-6.2FLA

ELECTRICAL INFORMATION
MOTOR CIRCUIT MCA: 7.8A
CONTROL CIRCUIT MCA: 2.8A
MOTOR CIRCUIT MDP: 15A
CONTROL CIRCUIT MDP: 15A

NOTES
--- DENOTES FIELD WIRING
— DENOTES INTERNAL WIRING

*** TERMINALS S4 AND S6 USED ON NF & AF SERIES ACTUATORS
*** TERMINAL 11 PROVIDES COOLING CONNECTION

WIRE COLOR		SECRET STYLE TOLLNRY RELAY	
BK-BLACK	YW - YELLOW	RD - RED	10 4 3
BL-BLUE	GR - GREEN	WH - WHITE	11 2 1
BR - BROWN	GY - GRAY	PK - PINK	12 8 7
OR - ORANGE	PR - PURPLE		13 6 5

Please file



Reviewed for Code Compliance
Inspections Division
Approved with Conditions

DCV

Date: 02/19/15

Installation Wiring

JOB 2216390 - Hugo's (final package) r1

DRAWING NUMBER RP2216390-2

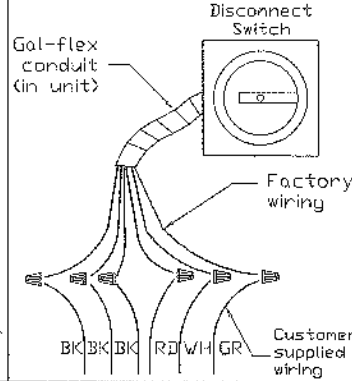
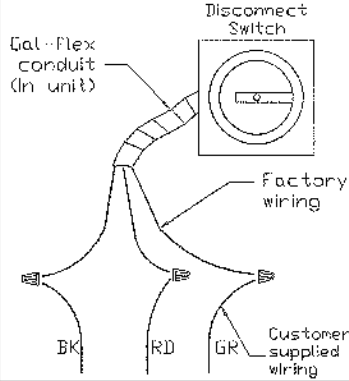
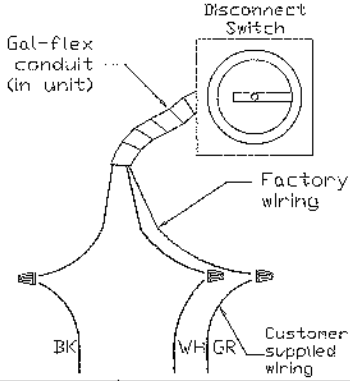
SHIP DATE 12/31/2014

MODEL A1-D.250-G10

120 V 1 PH.

240 V 1 PH.

208/460/600 V 3 PH.



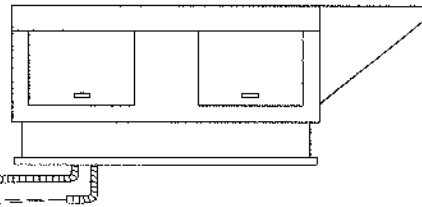
Component Identification		
Label	Description	Location

POWER FROM DEDICATED BREAKER

See above details.

Power Connection

D3 IN HEATER TO IL1A IN DCV
D7 IN HEATER TO IL1B IN DCV
WIRE TO 2033
DCV 2076



NOTES

WIRE COLOR

- BK - BLACK
- BL - BLUE
- BR - BROWN
- GR - ORANGE
- RD - RED
- WH - WHITE
- YW - YELLOW
- GR - GREEN
- GY - GRAY
- PR - PURPLE
- PK - PINK

2022-17



Reviewed for Code Compliance
 Inspections Division
 Approved with Conditions

Date: 02/19/15

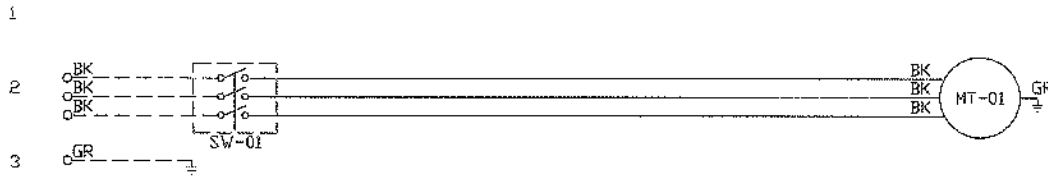
Exhaust Fan Wiring

JOB 2216390 - Hugo's (final package) r1

DRAWING NUMBER EXH2216390-3

SHIP DATE 12/31/2014

MODEL USB120BD-RM



Component Identification		
Label	Description	Location
MT-01	Fan Motor	[20]
SW-01	Main disconnect switch	[20]

MOTOR INFO
 EXHAUST 3HP-208V-3P-9.5FLA

ELECTRICAL INFORMATION
 MOTOR/CTRL MCA: 11.9A
 MOTOR/CTRL MDP: 20A

NOTES
 - - - - DENOTES FIELD WIRING
 _____ DENOTES INTERNAL WIRING

WIRE COLOR
 BK - BLACK YW - YELLOW
 BL - BLUE GR - GREEN
 BR - BROWN GY - GRAY
 OR - ORANGE PR - PURPLE
 RD - RED PK - PINK
 WH - WHITE

00000000

Page 19

ELECTRICAL PACKAGES - Job#2216390

NO.	TAG	PACKAGE #	LOCATION	SWITCHES		OPTION	FANS CONTROLLED				
				LOCATION	QUANTITY		TYPE	#	HP.	VBLT	FLA
1		DCV-2111	Utility Cabinet Left	Utility Cabinet Left	1 Light	Smart Controls DCV	Exhaust	3	3,000	208	9.5
				Hood # 1	1 Fan		Supply	3	3,000	208	6.2
							Exhaust	3	3,000	208	9.5



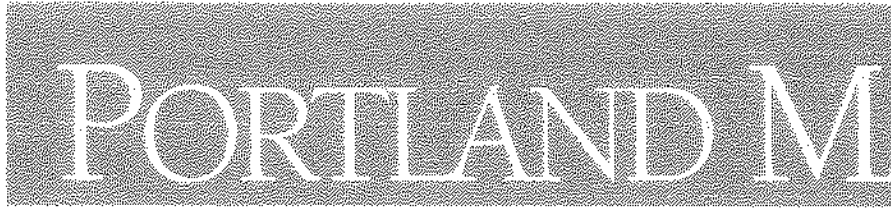
Reviewed for Code Compliance
 Inspections Division
 Approved with Conditions

Date: 02/19/15

JOB Hugo's (F)	LOCATION LEWL
DATE 12/31/21	DWG # 15
REV	

CAPTIVEAIR





Reviewed for Code Compliance
Inspections Division
Approved with Conditions

Strengthening a Remarkable City, Building a Community for Life

Date: 02/19/15

Jeff Levine, AICP, Director
Director of Planning and Urban Development

Tammy Munson
Director, Inspections Division

Electronic Signature and Fee Payment Confirmation

Notice: Your electronic signature is considered a legal signature per state law.

By digitally signing the attached document(s), you are signifying your understanding this is a legal document and your electronic signature is considered a **legal signature** per Maine state law. You are also signifying your intent on paying your fees by the opportunities below.

I, the undersigned, intend and acknowledge that no permit application can be reviewed until payment of appropriate permit fees are **paid in full** to the Inspections Office, City of Portland Maine by method noted below:

Within 24-48 hours, upon receipt of an e-mailed invoice from Building Inspections, which signifies that my electronic permit application and corresponding paperwork have been received, determined complete, entered by an administrative representative, and assigned a permit number, I then have the following four (4) payment options:

- to provide an on-line electronic check or credit/debit card (we now accept American Express, Discover, VISA, and MasterCard) payment (along with applicable fees beginning July 1, 2014),
- call the Inspections Office at (207) 874-8703 and speak to an administrative representative to provide a credit/debit card payment over the phone,
- hand-deliver a payment method to the Inspections Office, Room 315, Portland City Hall,
- or deliver a payment method through the U.S. Postal Service, at the following address:

City of Portland
Inspections Division
389 Congress Street, Room 315
Portland, Maine 04101

Once my payment has been received, this then starts the review process of my permit. **After all approvals have been met and completed, I will then be issued my permit via e-mail.** No work shall be started until I have received my permit.

Applicant Signature: Paul Roy Date: 2/15/15

I have provided digital copies and sent them on: _____ Date: _____

NOTE: All electronic paperwork must be delivered to buildinginspections@portlandmaine.gov or by physical means ie; a thumb drive or CD to the office.

Room 315 - 389 Congress Street- Portland, Maine 04101 (207) 874-8703 - Fax: 874-8716 - TTY: 874-8936



Page 4 BUILDING PERMIT



General Building Permit Application

If you or the property owner owes real estate or personal property taxes or user charges within the City, payment arrangements must be made before permits of any kind are issued.

Reviewed for Code Compliance
Inspections Division
Approved with Conditions

Address/Location of Construction: <u>78-82 Middle St. Port</u>		Date: <u>02/19/15</u>
Total Square Footage of Proposed Structure: <u>3,029</u>		
Tax Assessor's Chart, Block & Lot Chart# Block# Lot#	Applicant Name: <u>ARMA, LLC</u> Address: <u>88 MIDDLE ST</u> City, State & Zip: <u>PORTLAND, ME 04101</u>	Telephone: <u>207-774-8538</u> E-mail:
Lessee/Owner Name: <u>80-90 CORPS</u> (if different than applicant) Address: <u>108 Silver ST.</u> City, State & Zip: <u>PORTLAND, ME 04101</u> Telephone: <u>207-774-1885</u> E-mail:	Contractor Name: <u>Lebel's</u> (if different from Applicant) Address: <u>221 LINCOLN ST</u> City, State & Zip: <u>LEWISTON, ME 04240</u> Telephone: <u>207-282-2235</u> E-mail:	Cost Of Work: \$ <u>20,000.00</u> C of O Fee: \$ _____ Historic Rev \$ _____ Total Fees : \$ _____
Current use (i.e. single family) <u>RESTAURANT</u>		
If vacant, what was the previous use? _____		
Proposed Specific use: <u>RESTAURANT EXPANSION</u>		
Is property part of a subdivision? <u>NO</u> If yes, please name _____		
Project description: _____		
Who should we contact when the permit is ready: <u>Lebel's Sheet METAL</u>		
Address: <u>221 LINCOLN ST.</u>		
City, State & Zip: <u>LEWISTON, ME 04240</u>		
E-mail Address: <u>METALGOD213@LIVE.COM</u>		
Telephone: <u>207-282-2235</u>		

Please submit all of the information outlined on the applicable checklist. Failure to do so causes an automatic permit denial.

In order to be sure the City fully understands the full scope of the project, the Planning and Development Department may request additional information prior to the issuance of a permit. For further information or to download copies of this form and other applications visit the Inspections Division on-line at www.portlandmaine.gov, or stop by the Inspections Division office, room 315 City Hall or call 874-8703.

I hereby certify that I am the Owner of record of the named property, or that the owner of record authorizes the proposed work and that I have been authorized by the owner to make this application as his/her authorized agent. I agree to conform to all applicable laws of this jurisdiction. In addition, if a permit for work described in this application is issued, I certify that the Code Official's authorized representative shall have the authority to enter all areas covered by this permit at any reasonable hour to enforce the provisions of the codes applicable to this permit.

Signature: <u>Paul Roy</u>	Date: <u>5/5/15</u>
----------------------------	---------------------

This is not a permit; you may not commence ANY work until the permit is issued.



Jeff Levine, AICP, Director
Planning & Urban Development Department

Tammy Munson
Inspections Divi

Reviewed for Code Compliance
Inspections Division
Approved with Conditions

Date: 02/19/15

Kitchen Exhaust System Checklist and Application

Dear Applicant,

The following is a checklist to assist you in filing for a permit for a Kitchen Exhaust system. Please complete this and submit job specific construction documents that demonstrate compliance.

1. Type of System:

Type I Type II

Type I systems are systems that vent fryers, grills, broilers, ovens or woks.
Type II systems are systems that vent steamers and other non-grease producing appliances.

2. Type of Materials:

Is the hood Stainless steel or other type of steel? Stainless steel

If other, what type? _____

Is the duct work Stainless steel or other type of steel? carbon steel

If other, what type? _____

Thickness of the steel for the hood: 18ga Thickness of the duct for the hood: 16ga

Type of Hood and Duct Supports Unistrut & Threaded rod to joist beams

Type of seams and Joints Welded

Grease Gutters provided? Hood Clearance reduction to Combustibles design /specs:
min 18"

Duct Clearance reduction to Combustibles design /specs:
18"

Vibration Isolation System: 00



Jeff Levine, AICP, Director
Planning & Urban Development Department

Tammy Munson
Inspections Divi.

Reviewed for Code Compliance
Inspections Division
Approved with Conditions

Air Velocity within the duct system 2000 Date: 02/19/15

Grease accumulation prevention system: yes

Cleanouts: where Required (10' min)

Grease Duct enclosure: yes - Zero Clearance Fire master insulation

Exhaust Termination: Roof X Wall _____

Fire Suppression System: yes

Exhaust fan mounting and clearance from the roof / wall or Combustibles:
min 10'

Exhaust fan distance from property lines: on Roof of BLDG. 15' from edge.

Exhaust fan distance from other vents or openings: min. 10'

Exhaust fan distance from adjacent buildings: None around

Exhaust fan height above adjoining grade: min. 48" Above roof.

3. Hood Specs

Style of Hood: canopy

Type of Filter: Baffle

Height of filter above nearest cooking surface: 48"

Capacity of hood CFM: see spec 3 Different Hood on Project

Make up Air system description and capacity: Make up air To 3 Hoods with 1 central Heated Make up air System