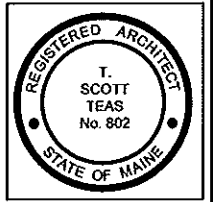
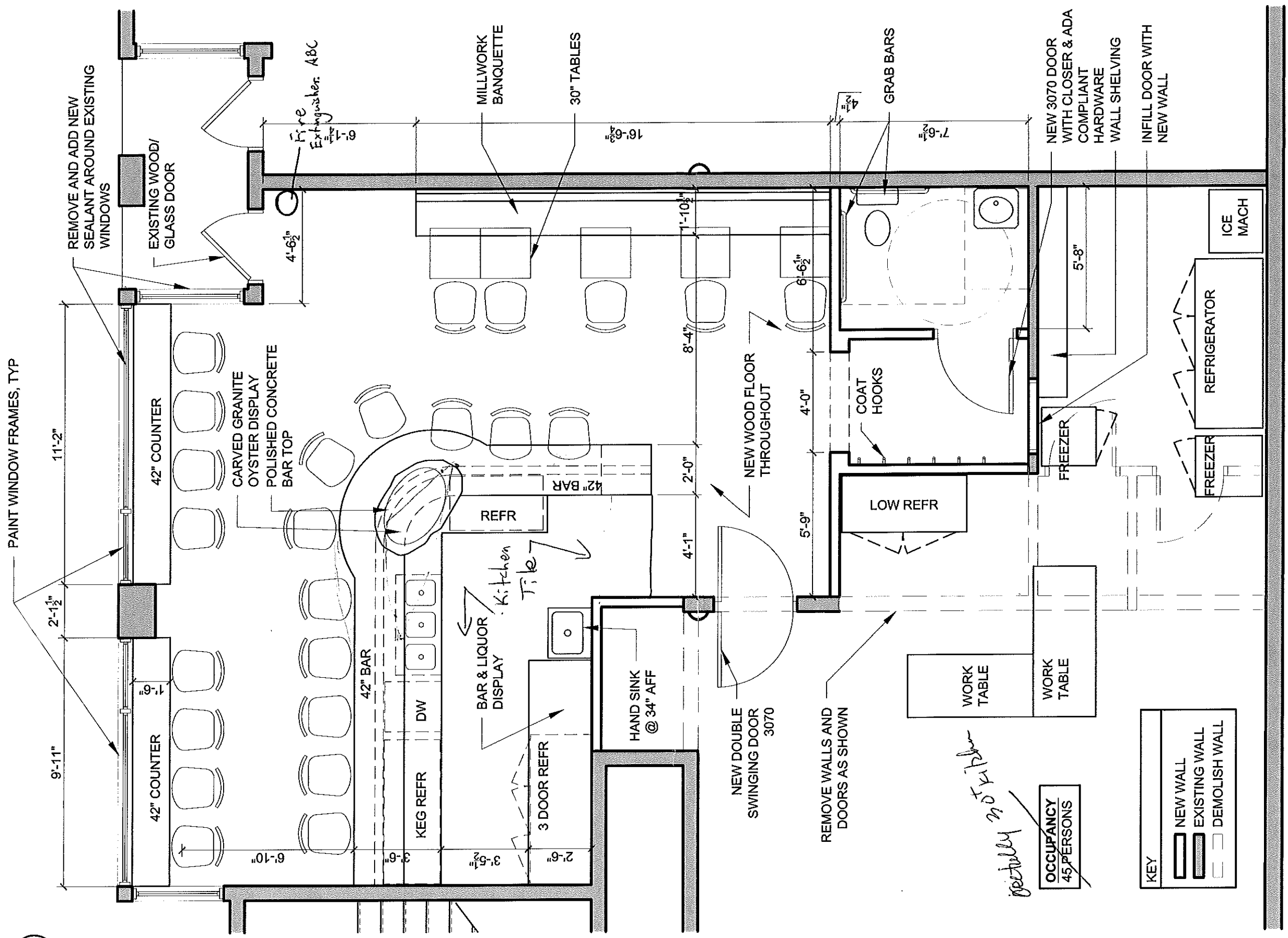


1 FLOOR PLAN
1/4" = 1'-0"



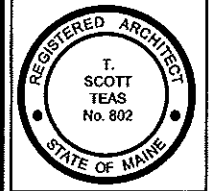
© 2012 TFH ARCHITECTS

RECEIVED
MAR 13 2012
Dept. of Building Inspection
City of Portland, Maine

EVENTIDE OYSTER CO.
86 MIDDLE STREET
PORTLAND, MAINE

TFH ARCHITECTS
80 MIDDLE STREET
PORTLAND MAINE 04101
TELEPHONE 207 776 6141
ARCHITECTURE PLANNING

A1.1



© 2012 TFH ARCHITECTS

EVENTIDE OYSTER CO.
86 MIDDLE STREET
PORTLAND, MAINE

TFH ARCHITECTS
80 MIDDLE STREET
PORTLAND MAINE 04101
TELEPHONE 207 775 6141
ARCHITECTURE PLANNING

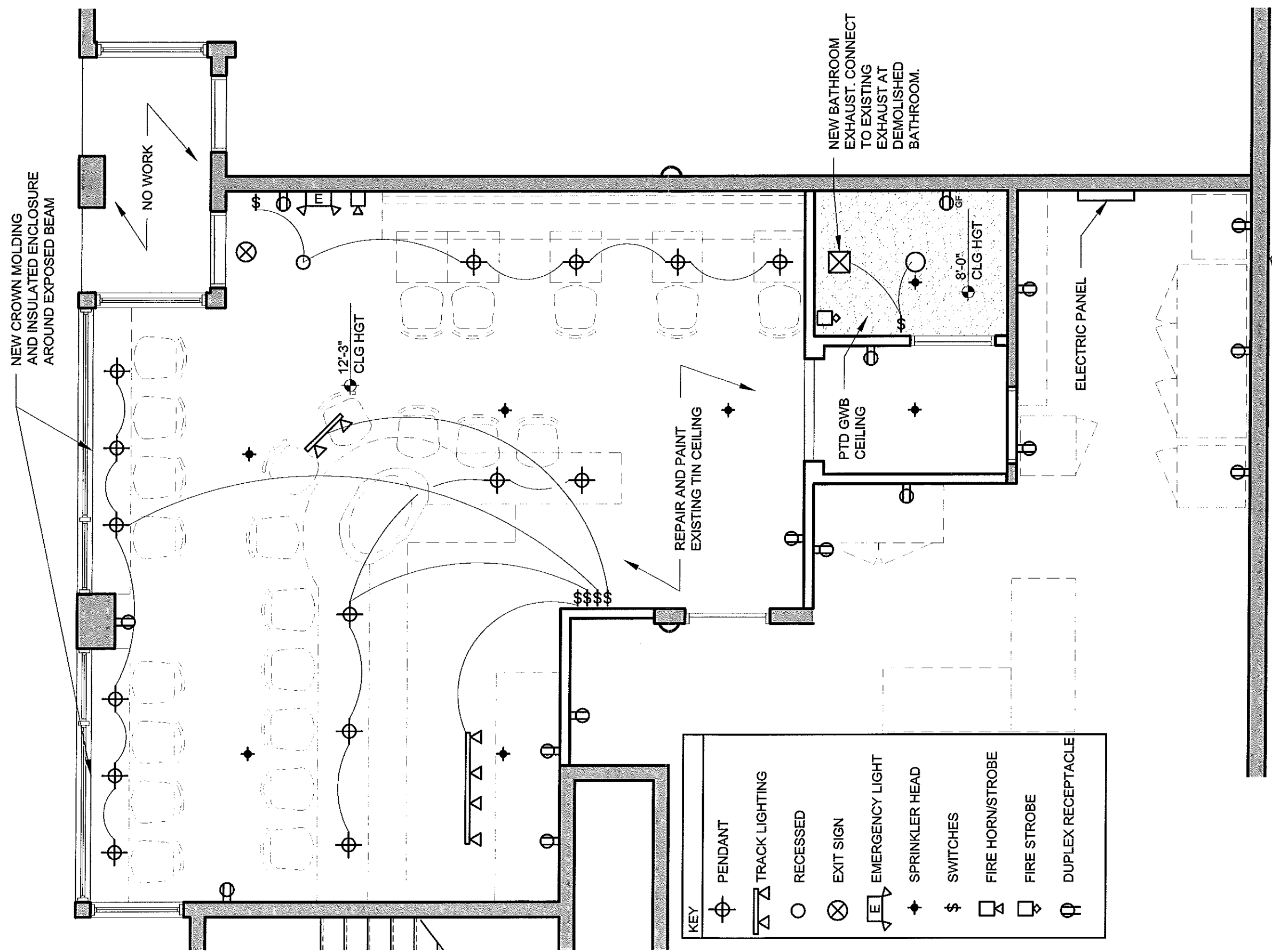
REVISIONS:

ISSUED FOR PERMIT
DATE: 8 MARCH 2012
PROJECT No. 1203
DRAWN BY: DM
CHECKED BY: TST
SCALE: AS NOTED

SHEET TITLE:
REFLECTED
CEILING,
LIGHTING, AND
POWER

A1.2

RECEIVED
MAR 13 2012
Dept. of Building Inspection
City of Portland Maine



1 REFLECTED CEILING PLAN
1/4" = 1'-0"