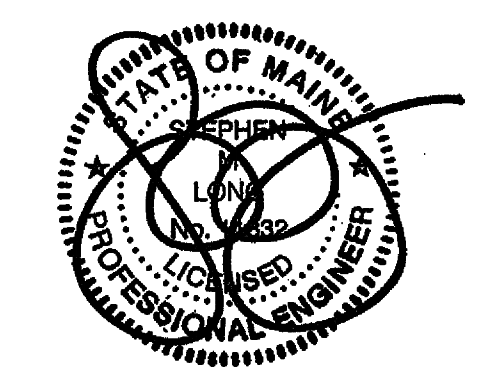
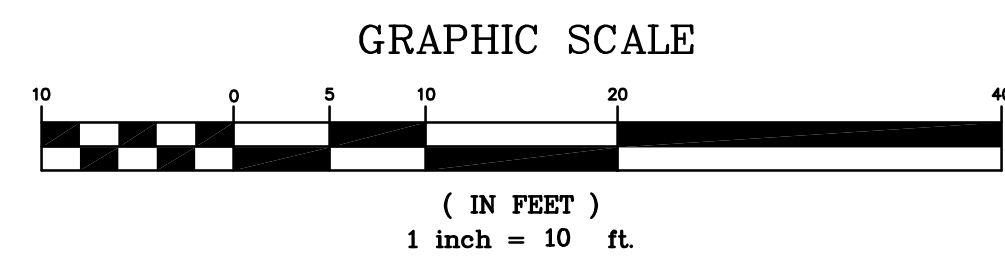
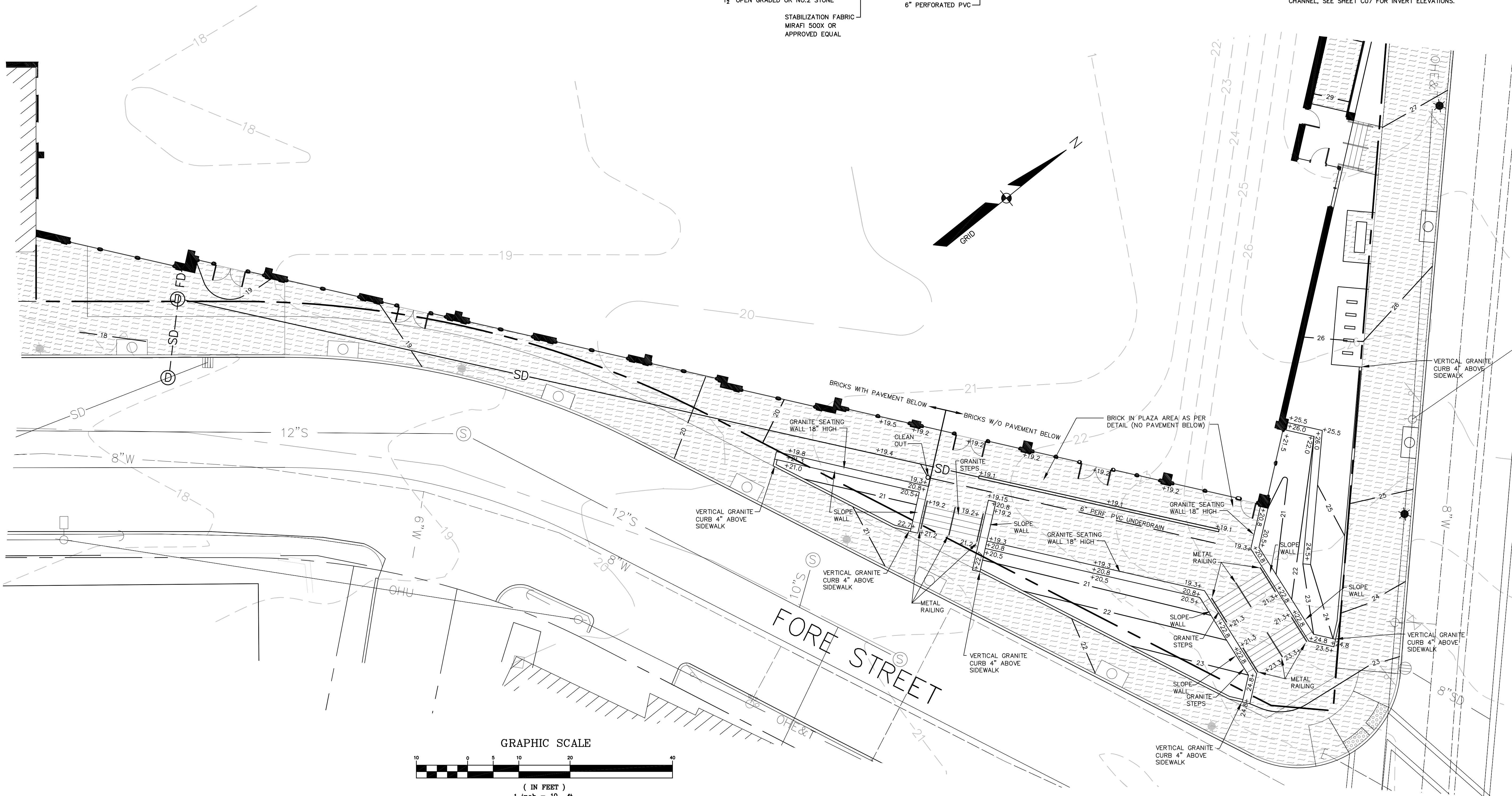


- NOTES:
- SUBMIT SHOP DRAWINGS.
  - CONCRETE TRENCH CHANNEL SECTIONS SHALL BE POURED IN 18' LENGTHS. STAGGER JOINTS WITH 48" TRENCH DRAIN SECTIONS. BETWEEN EACH 18' SECTION PROVIDE FULL DEPTH SURFACE EXPANSION JOINT INCLUDING (4) 1/2" DIA. STAINLESS STEEL SLIP DOWELS APPROXIMATELY ALIGNED BUT SLIGHTLY OFFSET FROM (4) #4 HORIZONTAL REBAR. SEE SPECIFICATIONS FOR EXPANSION JOINT SEALANT INFORMATION.
  - STRUCTURAL PLANTING MEDIUM TO REPLACE GRAVEL BORROW BELOW PAVEMENT IN LOCATIONS NEAR TREE PITS.
  - DEPTH OF CONCRETE CHANNEL VARIES TO ACCOMMODATE SLOPING SECTIONS OF DRAIN CHANNEL. SEE SHEET C07 FOR INVERT ELEVATIONS.



DATE	REVISION SCHEDULE	REVISION DESCRIPTION

**LOPECHEE**  
CONSTRUCTION CORPORATION  
11 CORPORATE DRIVE, BELMONT NH 03220  
PHONE (603) 227-9090 FAX (603) 227-2191

**PLAZA GRADING AND DETAILS**

PROJECT: PHASE II MIXED USE REDEVELOPMENT OF THE FORMER JORDAN'S MEATS SITE  
PORTLAND, ME

DATE: 07-23-12  
SCALE: 1"=10'  
DRAWN BY: SML  
**C05a**  
SHEET: 5a OF 11