

- FIRE ALARM KEY**
(NOT ALL SYMBOLS MAY BE USED)
- [F] MANUAL PULL STATION
 - [S] SYSTEM SMOKE DETECTOR
 - [S_{ER}] SYSTEM SMOKE DETECTOR, ELEVATOR RECALL
 - [H^{135R}] HEAT DETECTOR
 - [S_W] TEMPERATURE RATING
"R" INDICATES RATE OF RISE TYPE,
OTHERWISE FIXED TEMPERATURE
 - [S_W] SYSTEM SMOKE DETECTOR W/ SOUNDER BASE
 - [D] DUCT SMOKE DETECTOR
 - [A] STAND ALONE 120V SMOKE ALARM
 - [CM] CARBON MONOXIDE DETECTOR (SYSTEM)
 - [CM¹²⁰] CARBON MONOXIDE DETECTOR (120VAC STAND ALONE)
 - [CO] VISUAL SOUNDER FOR CO DETECTOR
 - [C] SUPERVISED CONTROL MODULE (SCM)
 - [Z] SHORT CIRCUIT ISOLATION MODULE (SCI)
 - [Z²] 2-WIRE DETECTOR ZONE INTERFACE MODULE (CZM)
 - [R_{2M}] ADDRESSABLE DUAL RELAY MODULE (R2M)
 - [R_{2M}] REVER DIAGRAM
 - [M₅] MINI MONITOR MODULE (FRMCE-5)
 - [M₄] MONITOR MODULE, BOX MOUNT (FRMCE-4)
 - [M₄] REVER DIAGRAM
 - [M₄] DUAL INPUT MONITOR MODULE (DIMM)
 - [M₄] REVER DIAGRAM
 - [S] PANEL
[L] LOOP
[A] ADDRESS (PROGRAMMED ON DETECTOR)
[S] SUBADDRESS (ONLY FOR DUAL MODULES, ETC.)
 - [S] ADDRESSABLE DEVICE ADDRESSING SCHEME
 - [PS] SPRINKLER PRESSURE SWITCH
 - [TS] SPRINKLER TAMPER SWITCH
 - [FS] SPRINKLER FLOW SWITCH
 - [RT] REMOTE ALARM INDICATOR / REMOTE TEST SWITCH
 - [RA] FACP REMOTE ALARM SOUNDER
 - [EL] END OF LINE RELAY
 - [EL] END OF LINE RESISTOR
 - [E₁₅] WALL MOUNT HORN STROBE. NUMBER DENOTES CANDELA RATING
MOUNT AT 80" A.F.F. OR 6" BELOW CEILING
WHICHEVER IS LOWER, U.N.O. WP = WATERPROOF
 - [E₁₅] WALL MOUNT HORN MOUNT AT 80" A.F.F. OR 6" BELOW CEILING
WHICHEVER IS LOWER, U.N.O. WP = WATERPROOF
 - [E₁₅] WALL MOUNT SPEAKER STROBE. NUMBER DENOTES CANDELA RATING
MOUNT AT 80" A.F.F. OR 6" BELOW CEILING
WHICHEVER IS LOWER, U.N.O. WP = WATERPROOF
 - [E₁₅] WALL MOUNT SPEAKER MOUNT AT 80" A.F.F. OR 6" BELOW CEILING
WHICHEVER IS LOWER, U.N.O. WP = WATERPROOF
 - [E₁₅] WALL MOUNT STROBE. NUMBER DENOTES CANDELA RATING
MOUNT AT 80" A.F.F. OR 6" BELOW CEILING
WHICHEVER IS LOWER, U.N.O. WP = WATERPROOF
 - [E₁₅] CIRCLE AROUND NOTIFICATION DEVICE DENOTES
CEILING MOUNTED (TYPICAL FOR ALL TYPES)
 - [SNC] STROBE SYNCHRONIZING MODULE
 - [AP] ANNUNCIATOR PANEL (SURFACE/FLUSH MOUNT)
 - [AP] ANNUNCIATOR PANEL (SURFACE/FLUSH MOUNT)
 - [MB] MASTER BOX (SURFACE/FLUSH MOUNT)
 - [MB] MASTER BOX (SURFACE/FLUSH MOUNT)
 - [BAT] REMOTE BATTERY CABINET
 - [POWER] REMOTE POWER SUPPLY
 - [FACP] FACP
 - [FACP] FIRE ALARM CONTROL PANEL (SURFACE/FLUSH)

1 1ST FLOOR FIRE ALARM PLAN
1/8" = 1'-0"

SLC DEVICE INFORMATION					
ADDRESS	DESCRIPTION	LOCATION	EVAC	RELATE 1 RELATE 2 RELATE 3	
1.1.1.0	PULL STATION	STAIR #2 EXIT	●		
1.1.2.0	PULL STATION	SPRINKLER ROOM EXIT	●		
1.1.3.0	SYSTEM SMOKE DETECTOR	SPRINKLER ROOM	●		
1.1.4.1	DUAL INPUT MONITOR MODULE	MAIN WATERFLOW	●		
1.1.4.2	DUAL INPUT MONITOR MODULE	MAIN RISER PRESSURE	●		
1.1.5.1	DUAL INPUT MONITOR MODULE	MAIN RISER SPRINKLER TAMPER	●		
1.1.5.2	DUAL INPUT MONITOR MODULE	MAIN RISER SPRINKLER TAMPER	●		
1.1.6.1	DUAL INPUT MONITOR MODULE	1ST FLOOR WATERFLOW	●		
1.1.6.2	DUAL INPUT MONITOR MODULE	FIRST FLOOR ISOLATION TAMPER	●		
1.1.7.0	135 DEG FIXED HEAT DETECTOR	POOL ROOM	●		
1.1.8.0	135 DEG FIXED HEAT DETECTOR	POOL ROOM	●		
1.1.9.0	SYSTEM SMOKE DETECTOR	POOL VESTIBULE	●		
1.1.10.0	SYSTEM SMOKE DETECTOR	POOL STORAGE ROOM	●		
1.1.11.0	SYSTEM SMOKE DETECTOR	MAIN ELECTRICAL ROOM	●		
1.1.12.0	PULL STATION	MAIN ELECTRICAL ROOM	●		
1.1.13.0	SYSTEM SMOKE DETECTOR	COMPUTER / TELEPHONE ROOM	●		
1.1.14.0	SYSTEM SMOKE DETECTOR	HOTEL OFFICE CORRIDOR	●		
1.1.15.0	SYSTEM SMOKE DETECTOR	HOTEL MANAGERS OFFICE	●		
1.1.16.0	SYSTEM SMOKE DETECTOR	HOTEL SALES OFFICE	●		
1.1.17.0	SYSTEM SMOKE DETECTOR	HOTEL LOBBY	●		
1.1.18.0	PULL STATION	HOTEL LOBBY EXIT	●		
1.1.19.0	MINI MONITOR MODULE	HOTEL LOBBY CO DETECTOR	●		
1.1.20.0	SYSTEM SMOKE DETECTOR	HOTEL BREAKFAST AREA	●		
1.1.21.0	SYSTEM SMOKE DETECTOR	HOTEL BREAKFAST AREA	●		
1.1.22.0	150 DEG FIXED HEAT DETECTOR	HOTEL GUEST PANTRY	●		
1.1.23.0	150 DEG FIXED HEAT DETECTOR	HOTEL FOOD PREP KITCHEN	●		
1.1.24.0	SYSTEM SMOKE DETECTOR	HOTEL FOOD STORAGE	●		
1.1.25.0	SYSTEM SMOKE DETECTOR	HOTEL 1ST FLOOR CORRIDOR	●		
1.1.26.0	SYSTEM SMOKE DETECTOR	HOTEL BUSINESS CENTER	●		
1.1.27.0	SYSTEM SMOKE DETECTOR	HOTEL GUEST STORE	●		
1.1.28.0	SYSTEM SMOKE DETECTOR	HOTEL 1ST FLOOR CORRIDOR	●	1.1.36.2 1.1.37.2	
1.1.29.0	SYSTEM SMOKE DETECTOR	HOTEL 1ST FLOOR ELEVATOR LOBBY	●	1.1.36.2 1.1.37.2	
1.1.30.0	SYSTEM SMOKE DETECTOR	ELEVATOR 1/2 PIT	●	1.1.36.2 1.1.37.2 1.1.38.1 & 1.1.38.2	
1.1.31.0	135 DEG FIXED HEAT DETECTOR	ELEVATOR 1/2 PIT	●	1.1.34.1 1.1.34.2	
1.1.32.0	SYSTEM SMOKE DETECTOR	HOTEL 1ST FLOOR CORRIDOR	●		
1.1.33.0	SYSTEM SMOKE DETECTOR	HOTEL BUSINESS CENTER STORAGE	●		

SLC DEVICE INFORMATION					
ADDRESS	DESCRIPTION	LOCATION	EVAC	RELATE 1 RELATE 2 RELATE 3	
1.1.34.1	DUAL RELAY MODULE	ELEVATOR #1 SHUNT TRIP			
1.1.34.2	DUAL RELAY MODULE	ELEVATOR #2 SHUNT TRIP			
1.1.35.1	DUAL RELAY MODULE	ELEVATOR #3 SHUNT TRIP			
1.1.35.2	DUAL RELAY MODULE	SPARE			
1.1.36.1	DUAL RELAY MODULE	ELEVATOR #1 PRIMARY RECALL			
1.1.36.2	DUAL RELAY MODULE	ELEVATOR #1 SECONDARY RECALL			
1.1.37.1	DUAL RELAY MODULE	ELEVATOR #2 PRIMARY RECALL			
1.1.37.2	DUAL RELAY MODULE	ELEVATOR #2 SECONDARY RECALL			
1.1.38.1	DUAL RELAY MODULE	ELEVATOR #1 FLASHING HAT			
1.1.38.2	DUAL RELAY MODULE	ELEVATOR #2 FLASHING HAT			
1.1.39.0	SYSTEM SMOKE DETECTOR	ELEVATOR #1/2 MACH. ROOM	●	1.1.36.2 1.1.37.2 1.1.38.1 & 1.1.38.2	
1.1.40.0	135 DEG FIXED HEAT DETECTOR	ELEVATOR #1/2 MACH. ROOM	●	1.1.34.1 1.1.34.2	
1.1.41.0	MINI MONITOR MODULE	POOL MECHANICAL RM. CO DETECTOR	●		
1.1.42.0	DUCT SMOKE DETECTOR	RTU-BAR	●		
1.1.43.0	MONITOR MODULE	ELEVATOR #1/2 PIT ISOLATION TAMPER	●		
1.1.44.0	PULL STATION	POOL MECHANICAL ROOM	●		
1.1.45.0	SYSTEM SMOKE DETECTOR	POOL MECHANICAL ROOM	●		
1.1.46.0	PULL STATION	HOTEL FORE STREET EXIT	●		

SLC DEVICE INFORMATION					
ADDRESS	DESCRIPTION	LOCATION	EVAC	RELATE 1 RELATE 2 RELATE 3	
3.1.1.1	DUAL RELAY MODULE	ELEVATOR #3 PRIMARY RECALL			
3.1.1.2	DUAL RELAY MODULE	ELEVATOR #3 SECONDARY RECALL			
3.1.2.1	DUAL RELAY MODULE	ELEVATOR #3 FLASHING HAT			
3.1.2.2	DUAL RELAY MODULE	SPARE			
3.1.3.0	SYSTEM SMOKE DETECTOR	ELEVATOR #3 MACH. ROOM	●	3.1.1.2 3.1.2.1	
3.1.4.0	135 DEG FIXED HEAT DETECTOR	ELEVATOR #3 MACH. ROOM	●	1.1.35.1	
3.1.5.0	PULL STATION	ELEVATOR #3 MACH. ROOM	●		
3.1.6.0	PULL STATION	STAIRWELL #1 EXIT	●		
3.1.7.0	135 DEG FIXED HEAT DETECTOR	CONDO TRASH STORAGE ROOM	●	3.1.1.2 3.1.2.1	
3.1.8.0	SYSTEM SMOKE DETECTOR	ELEVATOR #3 PIT	●	3.1.1.2 3.1.2.1	
3.1.9.0	135 DEG FIXED HEAT DETECTOR	ELEVATOR #3 PIT	●	1.1.35.1	
3.1.10.0	SYSTEM SMOKE DETECTOR	1ST FLOOR ELEVATOR #3 LOBBY	●	3.1.1.2	
3.1.11.0	PULL STATION	CONDO 1ST FLOOR ELEVATOR LOBBY	●		

SLC DEVICE INFORMATION					
ADDRESS	DESCRIPTION	LOCATION	EVAC	RELATE 1 RELATE 2 RELATE 3	
4.1.1.0	MINI MONITOR MODULE	RESTAURANT KITCHEN CO DETECTOR	●		
4.1.2.0	MINI MONITOR MODULE	RESTAURANT KITCHEN CO DETECTOR	●		
4.1.3.0	MONITOR MODULE	RESTAURANT ANSUL SYSTEM	●		
4.1.4.0	PULL STATION	RESTAURANT KITCHEN EXIT	●		
4.1.5.0	PULL STATION	RESTAURANT MAIN EXIT	●		
4.1.6.0	PULL STATION	RESTAURANT PATIO EXIT	●		
4.1.7.0	PULL STATION	RESTAURANT RETAIL EXIT	●		
4.1.9.0	MINI MONITOR MODULE	RESTAURANT CO DETECTOR	●		
4.1.10.0	DUCT SMOKE DETECTOR	RTU-K	●		
4.1.11.0	DUCT SMOKE DETECTOR	RTU-BAR	●		
4.1.12.0	DUCT SMOKE DETECTOR	RTU-D2	●		

NOTIFICATION CIRCUIT TOTALS				
CIRCUIT #	Description	QTY	MILLIAMPERES	Speaker Watts
1	110 CD WEATHERPROOF HORN STROBE	1	137	0
1	15 CD HORN STROBE	4	74	0
1	15 CD STROBE	7	55	0
1	30 CD HORN STROBE	3	82	0
1		15	1064	0

NOTIFICATION CIRCUIT TOTALS				
CIRCUIT #	Description	QTY	MILLIAMPERES	Speaker Watts
11	30 CD HORN STROBE	3	82	0
11	30 CD STROBE	1	63	0
11	75 CD HORN STROBE	1	131	0
11		5	440	0

NOTIFICATION CIRCUIT TOTALS				
CIRCUIT #	Description	QTY	MILLIAMPERES	Speaker Watts
12	15 CD HORN STROBE	2	74	0
12	15 CD STROBE	1	55	0
12	30 CD HORN STROBE	1	82	0
12	30 CD STROBE	1	63	0
12	60 CD HORN STROBE	2	107	0
12		7	562	0

NOTIFICATION CIRCUIT TOTALS				
CIRCUIT #	Description	QTY	MILLIAMPERES	Speaker Watts
7	15 CD HORN STROBE	1	74	0
7		1	74	0

NORTECH SYSTEMS

20 HARR RD
BARRINGTON, NH 03825
VOICE: 603.664.0500
FAX: 603.664.7317
WWW.NORTECH-SYSTEMS.COM

PROJECT: **JORDAN'S MIXED USE**
207 & 209 FORE ST.
PORTLAND ME

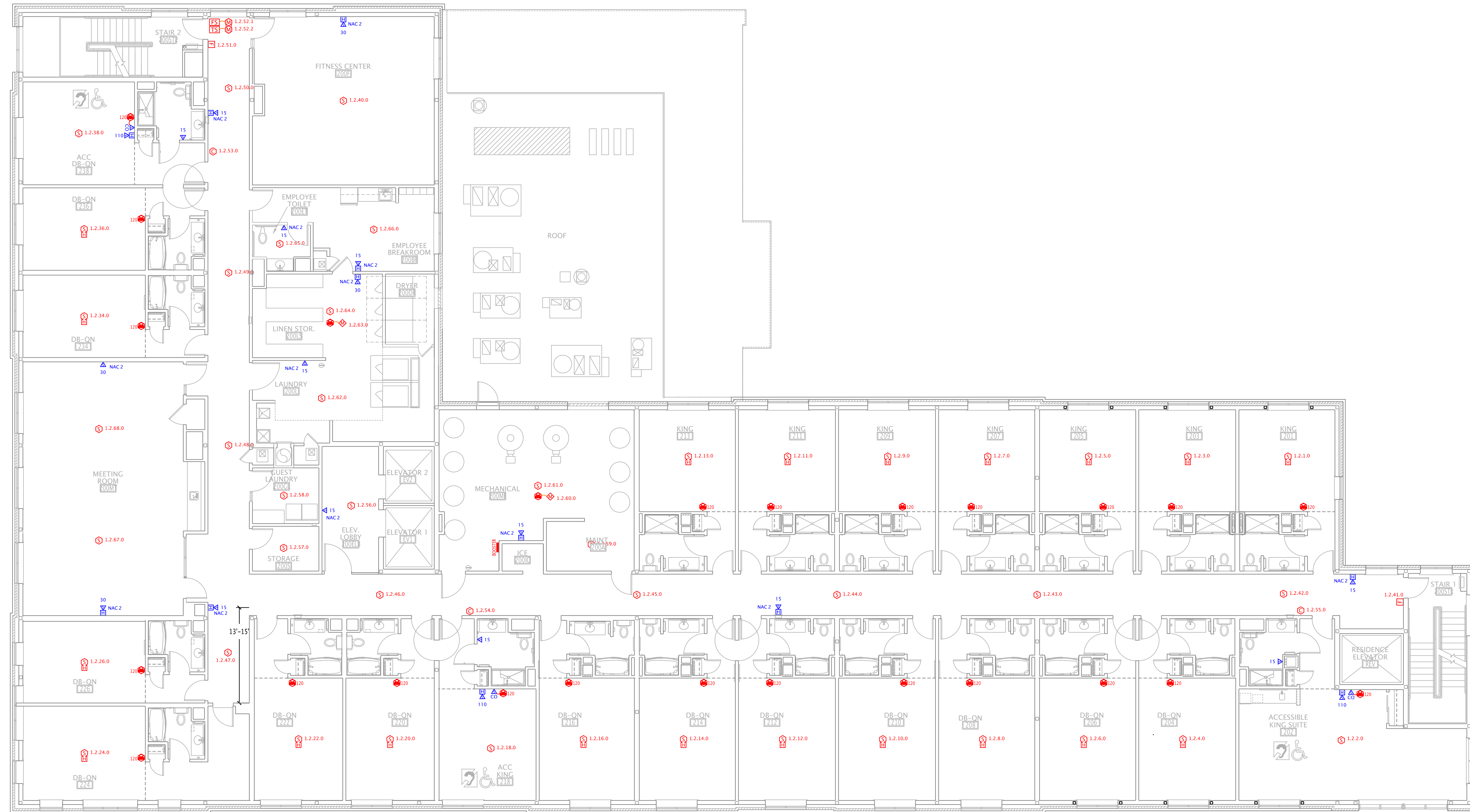
DATE: 11/15/10

NORTECH SYSTEMS

DRAWN BY: MDR

FOR: NORTHWIND ELECTRIC

F1



- FIRE ALARM KEY**
(NOT ALL SYMBOLS MAY BE USED)
- [E] MANUAL PULL STATION
 - [S] SYSTEM SMOKE DETECTOR
 - [S_{ER}] SYSTEM SMOKE DETECTOR, ELEVATOR RECALL
 - [H] HEAT DETECTOR
 - [H_{135F}] TEMPERATURE RATING
"R" INDICATES RATE OF RISE TYPE,
OTHERWISE FIXED TEMPERATURE
 - [S_W] SYSTEM SMOKE DETECTOR W/ SOUNDER BASE
 - [D] DUCT SMOKE DETECTOR
 - [A] STAND ALONE 120V SMOKE ALARM
 - [CO] CARBON MONOXIDE DETECTOR (SYSTEM)
 - [CO₁₂₀] CARBON MONOXIDE DETECTOR (120VAC STAND ALONE)
 - [CO] VISUAL SOUNDER FOR CO DETECTOR
 - [C] SUPERVISED CONTROL MODULE (SCM)
 - [I] SHORT CIRCUIT ISOLATION MODULE (SCI)
 - [Z] 2-WIRE DETECTOR ZONE INTERFACE MODULE (ZIM)
 - [R] ADDRESSABLE DUAL RELAY MODULE (R2M)
 - [M] MINI MONITOR MODULE (FRMCE-5)
 - [M] MONITOR MODULE, BOX MOUNT (FRMCE-4)
 - [M] DUAL INPUT MONITOR MODULE (DIMM)
 - [P] PANEL
 - [L] LOOP
 - [A] ADDRESS (PROGRAMMED ON DETECTOR)
 - [S] SUBADDRESS (ONLY FOR DUAL MODULES, ETC.)
 - [S_{1.1.1.0}] ADDRESSABLE DEVICE ADDRESSING SCHEME
 - [PS] SPRINKLER PRESSURE SWITCH
 - [TS] SPRINKLER TAMPER SWITCH
 - [FS] SPRINKLER FLOW SWITCH
 - [RT] REMOTE ALARM INDICATOR / REMOTE TEST SWITCH
 - [RA] FACP REMOTE ALARM SOUNDER
 - [EOLR] END OF LINE RELAY
 - [EOLR] END OF LINE RESISTOR
 - [H] WALL MOUNT HORN STROBE, NUMBER DENOTES CANDELA RATING
MOUNT AT 80" A.F.F. OR 6" BELOW CEILING
WHICHEVER IS LOWER, U.N.O. WP = WATERPROOF
 - [H] WALL MOUNT HORN
MOUNT AT 80" A.F.F. OR 6" BELOW CEILING
WHICHEVER IS LOWER, U.N.O. WP = WATERPROOF
 - [H] WALL MOUNT SPEAKER STROBE, NUMBER DENOTES CANDELA RATING
MOUNT AT 80" A.F.F. OR 6" BELOW CEILING
WHICHEVER IS LOWER, U.N.O. WP = WATERPROOF
 - [H] WALL MOUNT SPEAKER
MOUNT AT 80" A.F.F. OR 6" BELOW CEILING
WHICHEVER IS LOWER, U.N.O.
 - [H] WALL MOUNT STROBE, NUMBER DENOTES CANDELA RATING
MOUNT AT 80" A.F.F. OR 6" BELOW CEILING
WHICHEVER IS LOWER, U.N.O. WP = WATERPROOF
 - [H] WALL MOUNT STROBE
MOUNT AT 80" A.F.F. OR 6" BELOW CEILING
WHICHEVER IS LOWER, U.N.O.
 - [C] CIRCLE AROUND NOTIFICATION DEVICE DENOTES
CEILING MOUNTED (TYPICAL FOR ALL TYPES)
 - [SYNC] STROBE SYNCHRONIZING MODULE
 - [AP] ANNUNCIATOR PANEL (SURFACE/FLUSH MOUNT)
 - [MB] MASTER BOX (SURFACE/FLUSH MOUNT)
 - [BAT] REMOTE BATTERY CABINET
 - [POWER] REMOTE POWER SUPPLY
 - [FACP] FACP
 - [FACP] FIRE ALARM CONTROL PANEL (SURFACE/FLUSH)

1 2ND FLOOR FIRE ALARM PLAN
1/8" = 1'-0"

ADDRESS	DESCRIPTION	LOCATION	EVAC	RELATE 1	RELATE 2	RELATE 3
1.2.1.0	SOUNDER BASE SYSTEM SMOKE DETECTOR	ROOM 201	●			
1.2.2.0	SYSTEM SMOKE DETECTOR	ROOM 202	●			
1.2.3.0	SOUNDER BASE SYSTEM SMOKE DETECTOR	ROOM 203	●			
1.2.4.0	SOUNDER BASE SYSTEM SMOKE DETECTOR	ROOM 204	●			
1.2.5.0	SOUNDER BASE SYSTEM SMOKE DETECTOR	ROOM 205	●			
1.2.6.0	SOUNDER BASE SYSTEM SMOKE DETECTOR	ROOM 206	●			
1.2.7.0	SOUNDER BASE SYSTEM SMOKE DETECTOR	ROOM 207	●			
1.2.8.0	SOUNDER BASE SYSTEM SMOKE DETECTOR	ROOM 208	●			
1.2.9.0	SOUNDER BASE SYSTEM SMOKE DETECTOR	ROOM 209	●			
1.2.10.0	SOUNDER BASE SYSTEM SMOKE DETECTOR	ROOM 210	●			
1.2.11.0	SOUNDER BASE SYSTEM SMOKE DETECTOR	ROOM 211	●			
1.2.12.0	SOUNDER BASE SYSTEM SMOKE DETECTOR	ROOM 212	●			
1.2.13.0	SOUNDER BASE SYSTEM SMOKE DETECTOR	ROOM 213	●			
1.2.14.0	SOUNDER BASE SYSTEM SMOKE DETECTOR	ROOM 214	●			
1.2.15.0	SOUNDER BASE SYSTEM SMOKE DETECTOR	ROOM 216	●			
1.2.18.0	SYSTEM SMOKE DETECTOR	ROOM 218	●			
1.2.20.0	SOUNDER BASE SYSTEM SMOKE DETECTOR	ROOM 220	●			
1.2.22.0	SOUNDER BASE SYSTEM SMOKE DETECTOR	ROOM 222	●			
1.2.24.0	SOUNDER BASE SYSTEM SMOKE DETECTOR	ROOM 224	●			
1.2.26.0	SOUNDER BASE SYSTEM SMOKE DETECTOR	ROOM 226	●			
1.2.34.0	SOUNDER BASE SYSTEM SMOKE DETECTOR	ROOM 234	●			
1.2.36.0	SOUNDER BASE SYSTEM SMOKE DETECTOR	ROOM 236	●			
1.2.38.0	SYSTEM SMOKE DETECTOR	ROOM 238	●			
1.2.40.0	SYSTEM SMOKE DETECTOR	FITNESS CENTER	●			
1.2.41.0	PULL STATION	2ND FLOOR STAIR 1 EXIT	●			
1.2.42.0	SYSTEM SMOKE DETECTOR	2ND FLOOR CORRIDOR	●			
1.2.43.0	SYSTEM SMOKE DETECTOR	2ND FLOOR CORRIDOR	●			
1.2.44.0	SYSTEM SMOKE DETECTOR	2ND FLOOR CORRIDOR	●			
1.2.45.0	SYSTEM SMOKE DETECTOR	2ND FLOOR CORRIDOR	●			
1.2.46.0	SYSTEM SMOKE DETECTOR	2ND FLOOR CORRIDOR	●			
1.2.47.0	SYSTEM SMOKE DETECTOR	2ND FLOOR CORRIDOR	●			
1.2.48.0	SYSTEM SMOKE DETECTOR	2ND FLOOR CORRIDOR	●			
1.2.49.0	SYSTEM SMOKE DETECTOR	2ND FLOOR CORRIDOR	●			
1.2.50.0	SYSTEM SMOKE DETECTOR	2ND FLOOR CORRIDOR	●			
1.2.51.0	PULL STATION	2ND FLOOR STAIR 2 EXIT	●			
1.2.52.1	DUAL INPUT MONITOR MODULE	2ND FLOOR WATERFLOW	●			

ADDRESS	DESCRIPTION	LOCATION	EVAC	RELATE 1	RELATE 2	RELATE 3
1.2.52.2	DUAL INPUT MONITOR MODULE	2ND FLOOR VALVE TAMPER	●			
1.2.53.0	SUPERVISED OUTPUT MODULE	ROOM 238 NAC DRIVER	●			
1.2.54.0	SUPERVISED OUTPUT MODULE	ROOM 218 NAC DRIVER	●			
1.2.55.0	SUPERVISED OUTPUT MODULE	ROOM 202 NAC DRIVER	●			
1.2.56.0	SYSTEM SMOKE DETECTOR	2ND FLOOR ELEVATOR 1/2 LOBBY	●	1.1.136.1	1.1.137.1	
1.2.57.0	SYSTEM SMOKE DETECTOR	2ND FLOOR STORAGE	●			
1.2.58.0	SYSTEM SMOKE DETECTOR	2ND FLOOR GUEST LAUNDRY	●			
1.2.59.0	SYSTEM SMOKE DETECTOR	2ND FLOOR MAINT. SHOP	●			
1.2.60.0	MINI MONITOR MODULE	2ND FLOOR MECHANICAL ROOM CO DETECTOR	●			
1.2.61.0	SYSTEM SMOKE DETECTOR	2ND FLOOR MECHANICAL ROOM	●			
1.2.62.0	SYSTEM SMOKE DETECTOR	STAFF LAUNDRY	●			
1.2.63.0	MINI MONITOR MODULE	STAFF LAUNDRY CO DETECTOR	●			
1.2.64.0	SYSTEM SMOKE DETECTOR	STAFF LAUNDRY	●			
1.2.65.0	SYSTEM SMOKE DETECTOR	2ND FLOOR STAFF TOILET	●			
1.2.66.0	SYSTEM SMOKE DETECTOR	2ND FLOOR STAFF ROOM	●			
1.2.67.0	SYSTEM SMOKE DETECTOR	2ND FLOOR MEETING ROOM	●			
1.2.68.0	SYSTEM SMOKE DETECTOR	2ND FLOOR MEETING ROOM	●			

NOTIFICATION CIRCUIT TOTALS				
CIRCUIT #	Description	QTY	MILLIAMPERES	Speaker Watts
2	15 CD HORN STROBE	6	74	0
2	15 CD STROBE	3	55	0
2	30 CD HORN STROBE	3	82	0
2	30 CD STROBE	1	63	0
		13	918	0

NORTECH SYSTEMS

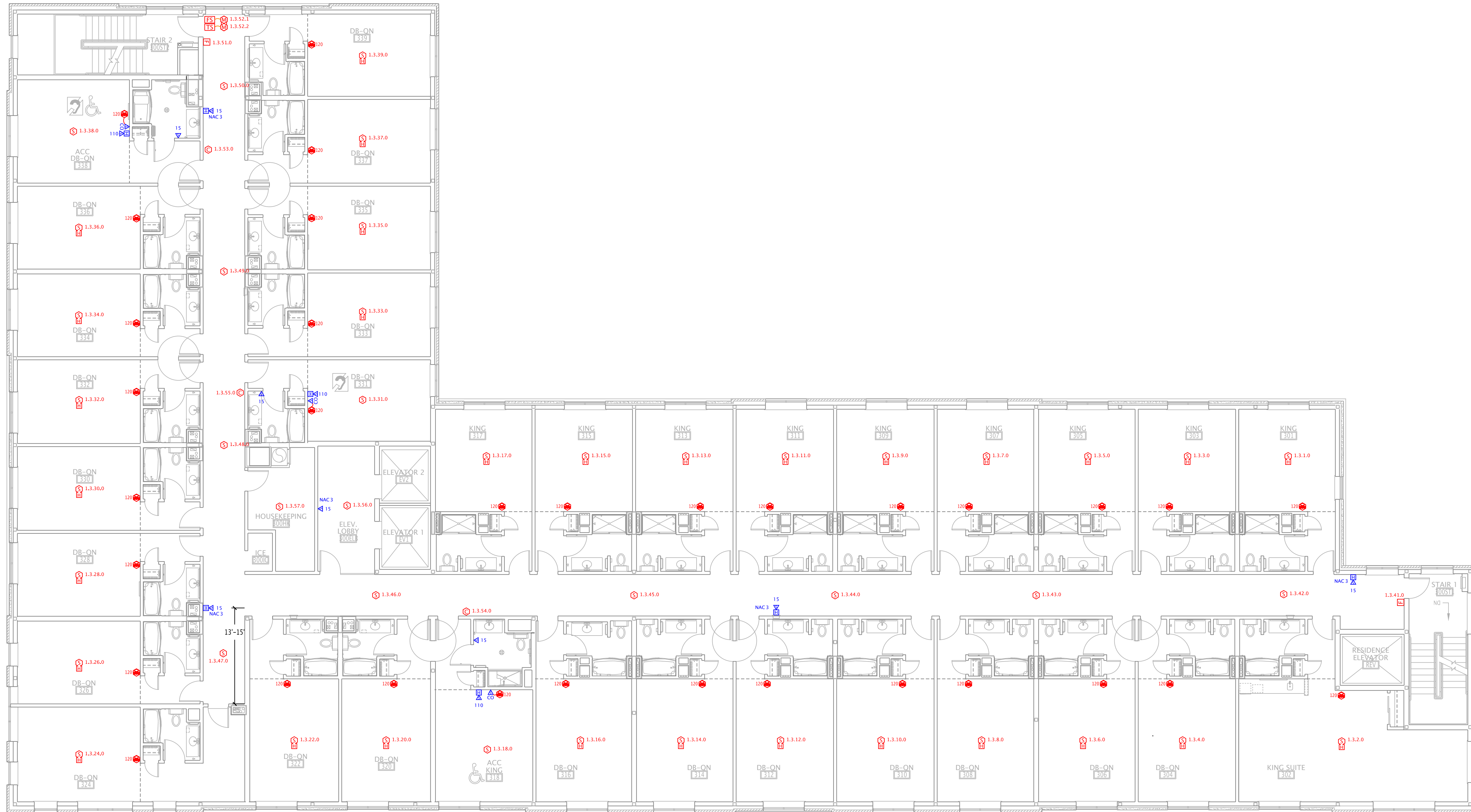
20 HARR RD
BARRINGTON, NH 03825
VOICE: 603.664.0500
FAX: 603.664.7337
WWW.NORTECH-SYSTEMS.COM

PROJECT: **JORDAN'S MIXED USE**
207 & 209 FORE ST.
PORTLAND ME

DATE: 11/15/10

REV. 12/18/10 DESCRIPTION REVISED PER PFD COMMENTS BY MDR

F2




- FIRE ALARM KEY**
(NOT ALL SYMBOLS MAY BE USED)
- [F] MANUAL PULL STATION
 - [S] SYSTEM SMOKE DETECTOR
 - [S_{ER}] SYSTEM SMOKE DETECTOR, ELEVATOR RECALL
 - [H_{135F}] HEAT DETECTOR
 - [S_H] SYSTEM SMOKE DETECTOR W/ SOUNDER BASE
 - [D] DUCT SMOKE DETECTOR
 - [A] STAND ALONE 120V SMOKE ALARM
 - [C] CARBON MONOXIDE DETECTOR (SYSTEM)
 - [C₁₂₀] CARBON MONOXIDE DETECTOR (120VAC STAND ALONE)
 - [CO] VISUAL SOUNDER FOR CO DETECTOR
 - [C] SUPERVISED CONTROL MODULE (SCM)
 - [I] SHORT CIRCUIT ISOLATION MODULE (SCI)
 - [Z] 2-WIRE DETECTOR ZONE INTERFACE MODULE (ZIM)
 - [R₁] ADDRESSABLE DUAL RELAY MODULE (RZM)
 - [M] MINI MONITOR MODULE (FRMCME-5)
 - [M] MONITOR MODULE, BOX MOUNT (FRMCME-4)
 - [M₁] DUAL INPUT MONITOR MODULE (DIMM)
 - [S_{1.1.1.0}] ADDRESSABLE DEVICE ADDRESSING SCHEME
 - [PS] SPRINKLER PRESSURE SWITCH
 - [TS] SPRINKLER TAMPER SWITCH
 - [FS] SPRINKLER FLOW SWITCH
 - [RT] REMOTE ALARM INDICATOR / REMOTE TEST SWITCH
 - [RA] FACP REMOTE ALARM SOUNDER
 - [ELR] END OF LINE RELAY
 - [ELR] END OF LINE RESISTOR
 - [H₁₅] WALL MOUNT HORN STROBE, NUMBER DENOTES CANDELA RATING MOUNT AT 80\"/>
 - [H₁₅] WALL MOUNT HORN MOUNT AT 80\"/>
 - [S₁₅] WALL MOUNT SPEAKER STROBE, NUMBER DENOTES CANDELA RATING MOUNT AT 80\"/>
 - [S₁₅] WALL MOUNT SPEAKER MOUNT AT 80\"/>
 - [C₁₅] WALL MOUNT STROBE, NUMBER DENOTES CANDELA RATING MOUNT AT 80\"/>
 - [SYN] STROBE SYNCHRONIZING MODULE
 - [AP] ANNUNCIATOR PANEL (SURFACE/FLUSH MOUNT)
 - [MB] MASTER BOX (SURFACE/FLUSH MOUNT)
 - [BATT] REMOTE BATTERY CABINET
 - [POWER] REMOTE POWER SUPPLY
 - [FACP] FACP FACP FIRE ALARM CONTROL PANEL (SURFACE/FLUSH)

1 3RD FLOOR FIRE ALARM PLAN
1/8" = 1'-0"

ADDRESS	DESCRIPTION	LOCATION	EVAC	RELATE 1	RELATE 2	RELATE 3
1.3.1.0	SOUNDER BASE SYSTEM SMOKE DETECTOR	ROOM 301	●			
1.3.2.0	SOUNDER BASE SYSTEM SMOKE DETECTOR	ROOM 302	●			
1.3.3.0	SOUNDER BASE SYSTEM SMOKE DETECTOR	ROOM 303	●			
1.3.4.0	SOUNDER BASE SYSTEM SMOKE DETECTOR	ROOM 304	●			
1.3.5.0	SOUNDER BASE SYSTEM SMOKE DETECTOR	ROOM 305	●			
1.3.6.0	SOUNDER BASE SYSTEM SMOKE DETECTOR	ROOM 306	●			
1.3.7.0	SOUNDER BASE SYSTEM SMOKE DETECTOR	ROOM 307	●			
1.3.8.0	SOUNDER BASE SYSTEM SMOKE DETECTOR	ROOM 308	●			
1.3.9.0	SOUNDER BASE SYSTEM SMOKE DETECTOR	ROOM 309	●			
1.3.10.0	SOUNDER BASE SYSTEM SMOKE DETECTOR	ROOM 310	●			
1.3.11.0	SOUNDER BASE SYSTEM SMOKE DETECTOR	ROOM 311	●			
1.3.12.0	SOUNDER BASE SYSTEM SMOKE DETECTOR	ROOM 312	●			
1.3.13.0	SOUNDER BASE SYSTEM SMOKE DETECTOR	ROOM 313	●			
1.3.14.0	SOUNDER BASE SYSTEM SMOKE DETECTOR	ROOM 314	●			
1.3.15.0	SOUNDER BASE SYSTEM SMOKE DETECTOR	ROOM 315	●			
1.3.16.0	SOUNDER BASE SYSTEM SMOKE DETECTOR	ROOM 316	●			
1.3.17.0	SOUNDER BASE SYSTEM SMOKE DETECTOR	ROOM 317	●			
1.3.18.0	SYSTEM SMOKE DETECTOR	ROOM 318	●			
1.3.20.0	SOUNDER BASE SYSTEM SMOKE DETECTOR	ROOM 320	●			
1.3.22.0	SOUNDER BASE SYSTEM SMOKE DETECTOR	ROOM 322	●			
1.3.24.0	SOUNDER BASE SYSTEM SMOKE DETECTOR	ROOM 324	●			
1.3.26.0	SOUNDER BASE SYSTEM SMOKE DETECTOR	ROOM 326	●			
1.3.28.0	SOUNDER BASE SYSTEM SMOKE DETECTOR	ROOM 328	●			
1.3.30.0	SOUNDER BASE SYSTEM SMOKE DETECTOR	ROOM 330	●			
1.3.31.0	SYSTEM SMOKE DETECTOR	ROOM 331	●			
1.3.32.0	SOUNDER BASE SYSTEM SMOKE DETECTOR	ROOM 332	●			
1.3.33.0	SOUNDER BASE SYSTEM SMOKE DETECTOR	ROOM 333	●			
1.3.34.0	SOUNDER BASE SYSTEM SMOKE DETECTOR	ROOM 334	●			
1.3.35.0	SOUNDER BASE SYSTEM SMOKE DETECTOR	ROOM 335	●			
1.3.36.0	SOUNDER BASE SYSTEM SMOKE DETECTOR	ROOM 336	●			
1.3.37.0	SOUNDER BASE SYSTEM SMOKE DETECTOR	ROOM 337	●			
1.3.38.0	SYSTEM SMOKE DETECTOR	ROOM 338	●			
1.3.39.0	SOUNDER BASE SYSTEM SMOKE DETECTOR	ROOM 239	●			
1.3.41.0	PULL STATION	3RD FLOOR STAIR 1 EXIT	●			
1.3.42.0	SYSTEM SMOKE DETECTOR	3RD FLOOR CORRIDOR	●			
1.3.43.0	SYSTEM SMOKE DETECTOR	3RD FLOOR CORRIDOR	●			

ADDRESS	DESCRIPTION	LOCATION	EVAC	RELATE 1	RELATE 2	RELATE 3
1.3.44.0	SYSTEM SMOKE DETECTOR	3RD FLOOR CORRIDOR	●			
1.3.45.0	SYSTEM SMOKE DETECTOR	3RD FLOOR CORRIDOR	●			
1.3.46.0	SYSTEM SMOKE DETECTOR	3RD FLOOR CORRIDOR	●			
1.3.47.0	SYSTEM SMOKE DETECTOR	3RD FLOOR CORRIDOR	●			
1.3.48.0	SYSTEM SMOKE DETECTOR	3RD FLOOR CORRIDOR	●			
1.3.49.0	SYSTEM SMOKE DETECTOR	3RD FLOOR CORRIDOR	●			
1.3.50.0	SYSTEM SMOKE DETECTOR	3RD FLOOR CORRIDOR	●			
1.3.51.0	PULL STATION	3RD FLOOR STAIR 2 EXIT	●			
1.3.52.1	DUAL INPUT MONITOR MODULE	3RD FLOOR WATERFLOW	●			
1.3.52.2	DUAL INPUT MONITOR MODULE	3RD FLOOR VALVE TAMPER	●			
1.3.53.0	SUPERVISED OUTPUT MODULE	ROOM 338 NAC DRIVER	●			
1.3.54.0	SUPERVISED OUTPUT MODULE	ROOM 338 NAC DRIVER	●			
1.3.55.0	SUPERVISED OUTPUT MODULE	ROOM 331 NAC DRIVER	●			
1.3.56.0	SYSTEM SMOKE DETECTOR	3RD FLOOR ELEVATOR 1/2 LOBBY	●	1.1.36.1	1.1.37.1	
1.3.57.0	SYSTEM SMOKE DETECTOR	3RD FLOOR HOUSEKEEPING	●			

NOTIFICATION CIRCUIT TOTALS				
CIRCUIT #	Description	QTY	MILLIAMPERES	Speaker Watts
3	15 CD HORN STROBE	4	74	0
3	15 CD STROBE	1	55	0
		5	351	0



NORTECH SYSTEMS
20 HARRIS RD
BARRINGTON, NH 03825
VOICE: 603.864.0500
FAX: 603.864.7337
WWW.NORTECH-SYSTEMS.COM

NORTECH SYSTEMS

PROJECT:
JORDAN'S MIXED USE
207 & 209 FORE ST.
PORTLAND ME

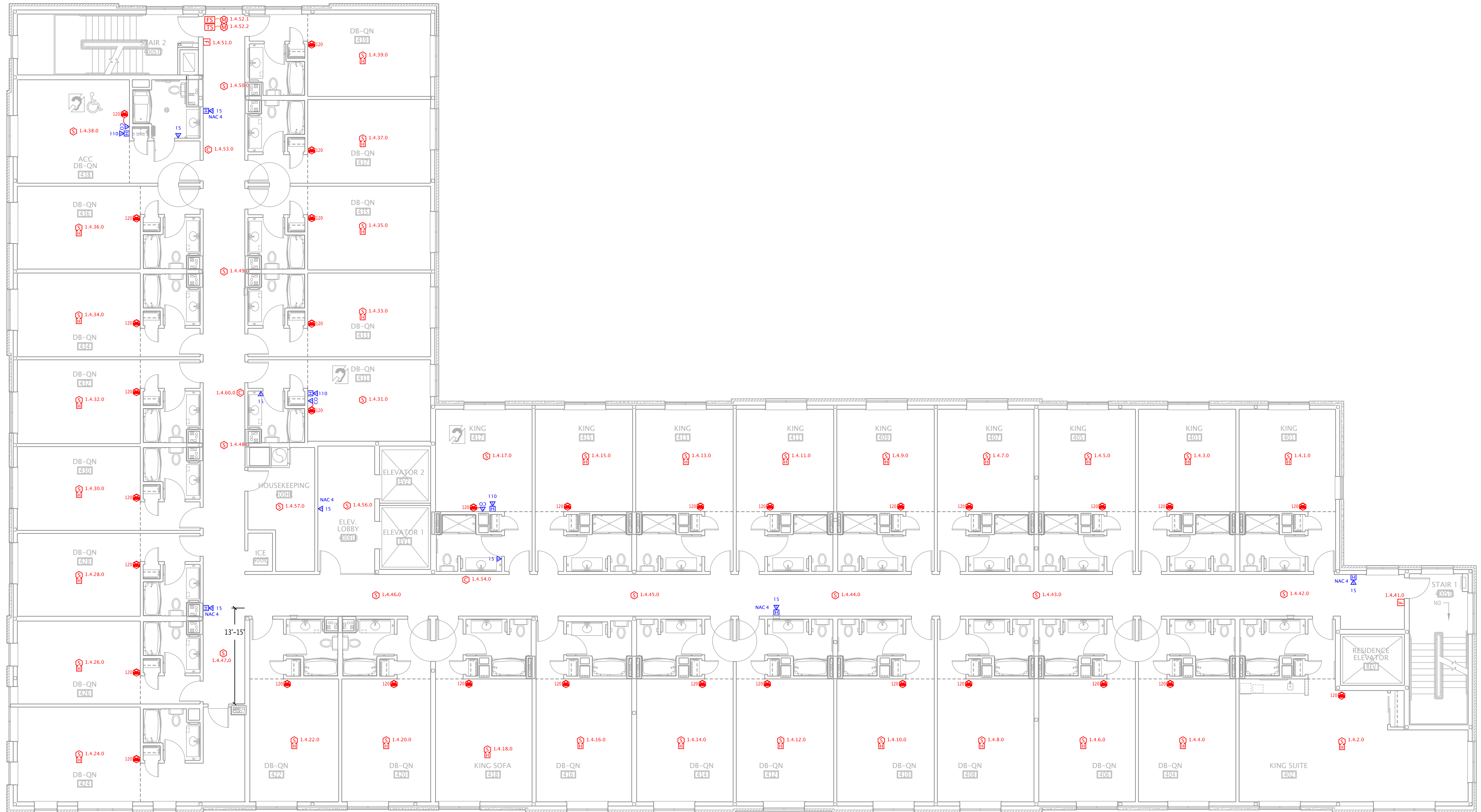
FOR: NORTHWIND ELECTRIC
DATE: 11/15/10

DRAWN BY: MDR

REV. 12/18/10 DESCRIPTION REVISED PER PFD COMMENTS BY MDR

F3

©2010 NORTECH SYSTEMS



- FIRE ALARM KEY**
(NOT ALL SYMBOLS MAY BE USED)
- [E] MANUAL PULL STATION
 - [S] SYSTEM SMOKE DETECTOR
 - [S_{ER}] SYSTEM SMOKE DETECTOR, ELEVATOR RECALL
 - [H^{135F}] HEAT DETECTOR
- TEMPERATURE RATING
"R" INDICATES RATE OF RISE TYPE,
OTHERWISE FIXED TEMPERATURE
- [S_H] SYSTEM SMOKE DETECTOR W/ SOUNDER BASE
 - [D] DUCT SMOKE DETECTOR
 - [A] STAND ALONE 120V SMOKE ALARM
 - [CO] CARBON MONOXIDE DETECTOR (SYSTEM)
 - [CO¹²⁰] CARBON MONOXIDE DETECTOR (120VAC STAND ALONE)
 - [CO¹²⁰]
 - [CO] VISUAL SOUNDER FOR CO DETECTOR
 - [C] SUPERVISED CONTROL MODULE (SCM)
 - [I] SHORT CIRCUIT ISOLATION MODULE (SCI)
 - [Z] 2-WIRE DETECTOR ZONE INTERFACE MODULE (CZM)
- [R] ADDRESSABLE DUAL RELAY MODULE (RZM)
 - [R] REEL DIAGRAM
 - [M] MINI MONITOR MODULE (FRMCE-5)
 - [M] MONITOR MODULE, BOX MOUNT (FRMCE-4)
 - [M] DUAL INPUT MONITOR MODULE (DIMM)
 - [M] REEL DIAGRAM
- PANEL LOOP ADDRESS (PROGRAMMED ON DETECTOR) SUBADDRESS (ONLY FOR DUAL MODULES, ETC.)
- [S^{1.1.1.0}] ADDRESSABLE DEVICE ADDRESSING SCHEME
- [PS] SPRINKLER PRESSURE SWITCH
 - [TS] SPRINKLER TAMPER SWITCH
 - [FS] SPRINKLER FLOW SWITCH
 - [RT] REMOTE ALARM INDICATOR / REMOTE TEST SWITCH
 - [RA] FACP REMOTE ALARM SOUNDER
 - [ELR] END OF LINE RELAY
 - [ELR] END OF LINE RESISTOR
 - [H¹⁵] HALL MOUNT HORN STROBE, NUMBER DENOTES CANDELA RATING MOUNT AT 80" A.F.F. OR 6" BELOW CEILING WHICHEVER IS LOWER, U.N.O. WP = WATERPROOF
 - [H] HALL MOUNT HORN MOUNT AT 80" A.F.F. OR 6" BELOW CEILING WHICHEVER IS LOWER, U.N.O. WP = WATERPROOF
 - [H¹⁵] HALL MOUNT SPEAKER STROBE, NUMBER DENOTES CANDELA RATING MOUNT AT 80" A.F.F. OR 6" BELOW CEILING WHICHEVER IS LOWER, U.N.O. WP = WATERPROOF
 - [H] HALL MOUNT SPEAKER MOUNT AT 80" A.F.F. OR 6" BELOW CEILING WHICHEVER IS LOWER, U.N.O.
 - [H¹⁵] HALL MOUNT STROBE, NUMBER DENOTES CANDELA RATING MOUNT AT 80" A.F.F. OR 6" BELOW CEILING WHICHEVER IS LOWER, U.N.O. WP = WATERPROOF
 - [H] HALL MOUNT STROBE MOUNT AT 80" A.F.F. OR 6" BELOW CEILING WHICHEVER IS LOWER, U.N.O.
 - [SYN] STROBE SYNCHRONIZING MODULE
 - [AP] ANNUNCIATOR PANEL (SURFACE/FLUSH MOUNT)
 - [MB] MASTER BOX (SURFACE/FLUSH MOUNT)
 - [BATT] REMOTE BATTERY CABINET
 - [POWER] REMOTE POWER SUPPLY
 - [FACP] FACP
 - [FACP] FIRE ALARM CONTROL PANEL (SURFACE/FLUSH)
- ABBREVIATIONS -----
- FACP FIRE ALARM CONTROL PANEL
 - SLC SIGNALING LINE CIRCUIT
 - NAC NOTIFICATION APPLIANCE CIRCUIT
 - EOLR END OF LINE RELAY
 - EOLR END OF LINE RELAY
 - APF ABOVE FINISH FLOOR
 - UNO UNLESS NOTED OTHERWISE
 - WP WEATHERPROOF
 - AH AMPERE-HOUR
 - VDC VOLTS DIRECT CURRENT
 - VAC VOLTS ALTERNATING CURRENT
 - UTP UN-SHIELDED TWISTED PAIR (CABLE)
 - STP SHIELDED TWISTED PAIR (CABLE)
 - FPLR FIRE ALARM POWER LIMITED RISER (CABLE)
 - FPLP FIRE ALARM POWER LIMITED PLENUM (CABLE)

1 4TH FLOOR FIRE ALARM PLAN
1/8" = 1'-0"

SLC DEVICE INFORMATION			
ADDRESS	DESCRIPTION	LOCATION	EVAC RELATE 1 RELATE 2 RELATE 3
1.4.1.0	SOUNDER BASE SYSTEM SMOKE DETECTOR	ROOM 401	●
1.4.2.0	SOUNDER BASE SYSTEM SMOKE DETECTOR	ROOM 402	●
1.4.3.0	SOUNDER BASE SYSTEM SMOKE DETECTOR	ROOM 403	●
1.4.4.0	SOUNDER BASE SYSTEM SMOKE DETECTOR	ROOM 404	●
1.4.5.0	SOUNDER BASE SYSTEM SMOKE DETECTOR	ROOM 405	●
1.4.6.0	SOUNDER BASE SYSTEM SMOKE DETECTOR	ROOM 406	●
1.4.7.0	SOUNDER BASE SYSTEM SMOKE DETECTOR	ROOM 407	●
1.4.8.0	SOUNDER BASE SYSTEM SMOKE DETECTOR	ROOM 408	●
1.4.9.0	SOUNDER BASE SYSTEM SMOKE DETECTOR	ROOM 409	●
1.4.10.0	SOUNDER BASE SYSTEM SMOKE DETECTOR	ROOM 410	●
1.4.11.0	SOUNDER BASE SYSTEM SMOKE DETECTOR	ROOM 411	●
1.4.12.0	SOUNDER BASE SYSTEM SMOKE DETECTOR	ROOM 412	●
1.4.13.0	SOUNDER BASE SYSTEM SMOKE DETECTOR	ROOM 413	●
1.4.14.0	SOUNDER BASE SYSTEM SMOKE DETECTOR	ROOM 414	●
1.4.15.0	SOUNDER BASE SYSTEM SMOKE DETECTOR	ROOM 415	●
1.4.16.0	SOUNDER BASE SYSTEM SMOKE DETECTOR	ROOM 416	●
1.4.17.0	SYSTEM SMOKE DETECTOR	ROOM 417	●
1.4.18.0	SOUNDER BASE SYSTEM SMOKE DETECTOR	ROOM 418	●
1.4.20.0	SOUNDER BASE SYSTEM SMOKE DETECTOR	ROOM 420	●
1.4.22.0	SOUNDER BASE SYSTEM SMOKE DETECTOR	ROOM 422	●
1.4.24.0	SOUNDER BASE SYSTEM SMOKE DETECTOR	ROOM 424	●
1.4.26.0	SOUNDER BASE SYSTEM SMOKE DETECTOR	ROOM 426	●
1.4.28.0	SOUNDER BASE SYSTEM SMOKE DETECTOR	ROOM 428	●
1.4.30.0	SOUNDER BASE SYSTEM SMOKE DETECTOR	ROOM 430	●
1.4.31.0	SYSTEM SMOKE DETECTOR	ROOM 431	●
1.4.32.0	SOUNDER BASE SYSTEM SMOKE DETECTOR	ROOM 432	●
1.4.33.0	SOUNDER BASE SYSTEM SMOKE DETECTOR	ROOM 433	●
1.4.34.0	SOUNDER BASE SYSTEM SMOKE DETECTOR	ROOM 434	●
1.4.35.0	SOUNDER BASE SYSTEM SMOKE DETECTOR	ROOM 435	●
1.4.36.0	SOUNDER BASE SYSTEM SMOKE DETECTOR	ROOM 436	●
1.4.37.0	SOUNDER BASE SYSTEM SMOKE DETECTOR	ROOM 437	●
1.4.38.0	SYSTEM SMOKE DETECTOR	ROOM 438	●
1.4.39.0	SOUNDER BASE SYSTEM SMOKE DETECTOR	ROOM 439	●
1.4.41.0	PULL STATION	4TH FLOOR STAIR 1 EXIT	●
1.4.42.0	SYSTEM SMOKE DETECTOR	4TH FLOOR CORRIDOR	●
1.4.43.0	SYSTEM SMOKE DETECTOR	4TH FLOOR CORRIDOR	●

SLC DEVICE INFORMATION			
ADDRESS	DESCRIPTION	LOCATION	EVAC RELATE 1 RELATE 2 RELATE 3
1.4.44.0	SYSTEM SMOKE DETECTOR	4TH FLOOR CORRIDOR	●
1.4.45.0	SYSTEM SMOKE DETECTOR	4TH FLOOR CORRIDOR	●
1.4.46.0	SYSTEM SMOKE DETECTOR	4TH FLOOR CORRIDOR	●
1.4.47.0	SYSTEM SMOKE DETECTOR	4TH FLOOR CORRIDOR	●
1.4.48.0	SYSTEM SMOKE DETECTOR	4TH FLOOR CORRIDOR	●
1.4.49.0	SYSTEM SMOKE DETECTOR	4TH FLOOR CORRIDOR	●
1.4.50.0	SYSTEM SMOKE DETECTOR	4TH FLOOR CORRIDOR	●
1.4.51.0	PULL STATION	4TH FLOOR STAIR 2 EXIT	●
1.4.52.1	DUAL INPUT MONITOR MODULE	4TH FLOOR WATERFLOW	●
1.4.52.2	DUAL INPUT MONITOR MODULE	4TH FLOOR VALVE TAMPER	●
1.4.53.0	SUPERVISED OUTPUT MODULE	ROOM 438 NAC DRIVER	●
1.4.54.0	SUPERVISED OUTPUT MODULE	ROOM 437 NAC DRIVER	●
1.4.56.0	SYSTEM SMOKE DETECTOR	4TH FLOOR ELEVATOR 1/2 LOBBY	● 1.1.36.1 1.1.37.1
1.4.57.0	SYSTEM SMOKE DETECTOR	4TH FLOOR HOUSEKEEPING	●
1.4.60.0	SUPERVISED OUTPUT MODULE	ROOM 431 NAC DRIVER	●

NOTIFICATION CIRCUIT TOTALS				
CIRCUIT #	Description	QTY	MILLIAMPERES	Speaker Watts
4	15 CD HORN STROBE	4	74	0
4	15 CD STROBE	1	55	0
		5	351	0

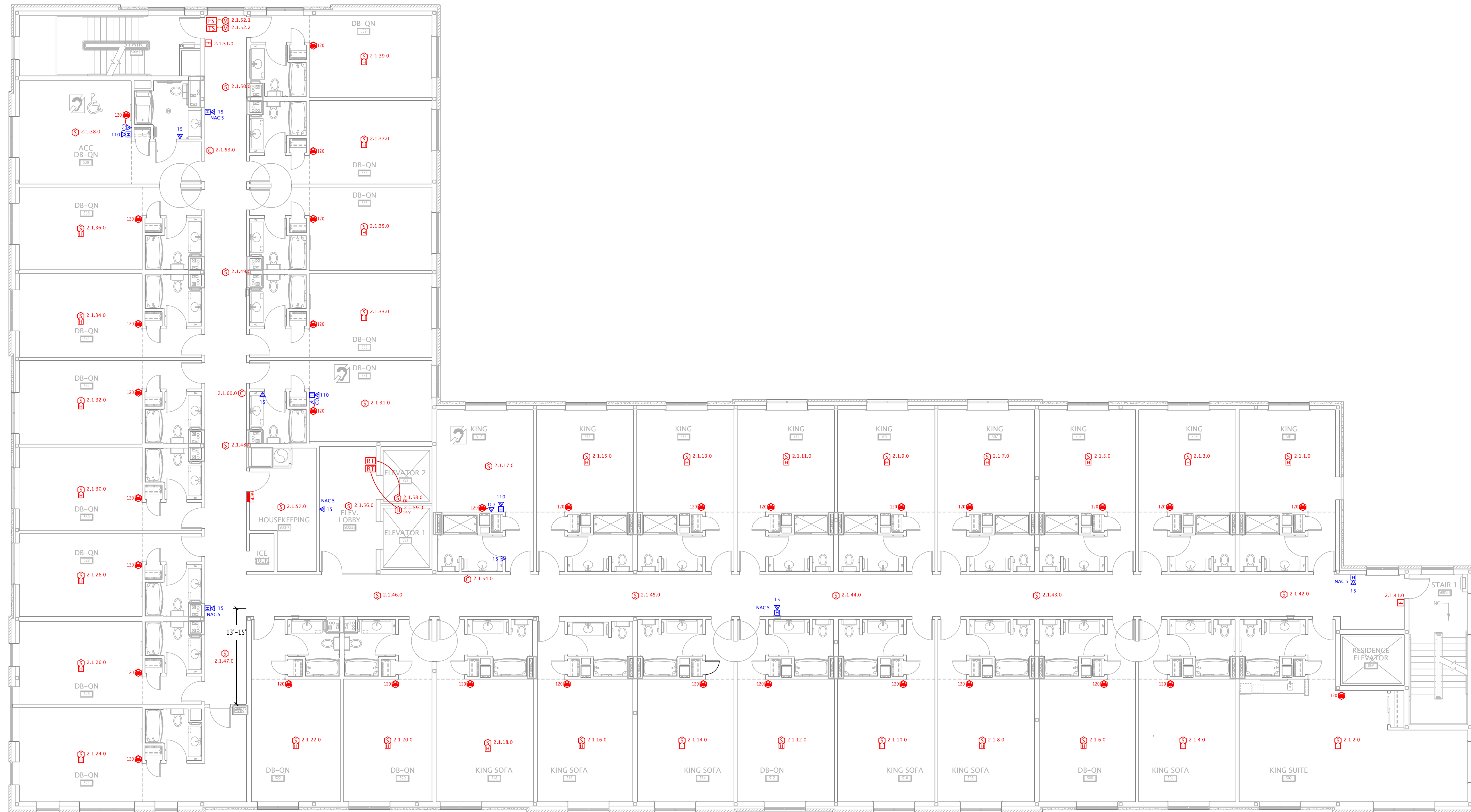
NORTECH SYSTEMS

20 HARR RD
BARRINGTON, NH 03825
VOICE: 603.664.0500
FAX: 603.664.7337
WWW.NORTECH-SYSTEMS.COM

PROJECT
JORDAN'S MIXED USE
207 & 209 FORE ST.
PORTLAND ME

DRAWN BY: MDR
FOR: NORTHWIND ELECTRIC
DATE: 11/15/10

F4



- FIRE ALARM KEY**
(NOT ALL SYMBOLS MAY BE USED)
- [F] MANUAL PULL STATION
 - [S] SYSTEM SMOKE DETECTOR
 - [S_{ER}] SYSTEM SMOKE DETECTOR, ELEVATOR RECALL
 - [H] HEAT DETECTOR
 - [H^{135F}] TEMPERATURE RATING
"R" INDICATES RATE OF RISE TYPE,
OTHERWISE FIXED TEMPERATURE
 - [S_H] SYSTEM SMOKE DETECTOR W/ SOUNDER BASE
 - [D] DUCT SMOKE DETECTOR
 - [A] STAND ALONE 120V SMOKE ALARM
 - [CO] CARBON MONOXIDE DETECTOR (SYSTEM)
 - [CO¹²⁰] CARBON MONOXIDE DETECTOR (120VAC STAND ALONE)
 - [CO] VISUAL SOUNDER FOR CO DETECTOR
 - [C] SUPERVISED CONTROL MODULE (SCM)
 - [I] SHORT CIRCUIT ISOLATION MODULE (SCI)
 - [Z] 2-WIRE DETECTOR ZONE INTERFACE MODULE (ZIM)
 - [R] ADDRESSABLE DUAL RELAY MODULE (R2M)
 - [M] MINI MONITOR MODULE (FRMCE-5)
 - [M] MONITOR MODULE, BOX MOUNT (FRMCE-4)
 - [M] DUAL INPUT MONITOR MODULE (DIMM)
 - [S^{1.1.1.0}] ADDRESSABLE DEVICE ADDRESSING SCHEME
 - [PS] SPRINKLER PRESSURE SWITCH
 - [TS] SPRINKLER TAMPER SWITCH
 - [FS] SPRINKLER FLOW SWITCH
 - [RT] REMOTE ALARM INDICATOR / REMOTE TEST SWITCH
 - [RA] FACP REMOTE ALARM SOUNDER
 - [ELR] END OF LINE RELAY
 - [ELR] END OF LINE RESISTOR
 - [H] WALL MOUNT HORN STROBE, NUMBER DENOTES CANDELA RATING
MOUNT AT 80" A.F.F. OR 6" BELOW CEILING
WHICHEVER IS LOWER, U.N.O. WP = WATERPROOF
 - [H] WALL MOUNT HORN
MOUNT AT 80" A.F.F. OR 6" BELOW CEILING
WHICHEVER IS LOWER, U.N.O. WP = WATERPROOF
 - [S] WALL MOUNT SPEAKER STROBE, NUMBER DENOTES CANDELA RATING
MOUNT AT 80" A.F.F. OR 6" BELOW CEILING
WHICHEVER IS LOWER, U.N.O. WP = WATERPROOF
 - [S] WALL MOUNT SPEAKER
MOUNT AT 80" A.F.F. OR 6" BELOW CEILING
WHICHEVER IS LOWER, U.N.O.
 - [S] WALL MOUNT STROBE, NUMBER DENOTES CANDELA RATING
MOUNT AT 80" A.F.F. OR 6" BELOW CEILING
WHICHEVER IS LOWER, U.N.O. WP = WATERPROOF
 - [C] CIRCLE AROUND NOTIFICATION DEVICE DENOTES
CEILING MOUNTED (TYPICAL FOR ALL TYPES)
 - [SYNC] STROBE SYNCHRONIZING MODULE
 - [AP] ANNUNCIATOR PANEL (SURFACE/FLUSH MOUNT)
 - [MB] MASTER BOX (SURFACE/FLUSH MOUNT)
 - [BATT] REMOTE BATTERY CABINET
 - [POWER] REMOTE POWER SUPPLY
 - [FACP] FACP
 - [FACP] FIRE ALARM CONTROL PANEL (SURFACE/FLUSH)

1 5TH FLOOR FIRE ALARM PLAN
1/8" = 1'-0"

SLC DEVICE INFORMATION				
ADDRESS	DESCRIPTION	LOCATION	EVAC	RELATE 1 RELATE 2 RELATE 3
2.1.1.0	SOUNDER BASE SYSTEM SMOKE DETECTOR	ROOM 501	●	
2.1.2.0	SOUNDER BASE SYSTEM SMOKE DETECTOR	ROOM 502	●	
2.1.3.0	SOUNDER BASE SYSTEM SMOKE DETECTOR	ROOM 503	●	
2.1.4.0	SOUNDER BASE SYSTEM SMOKE DETECTOR	ROOM 504	●	
2.1.5.0	SOUNDER BASE SYSTEM SMOKE DETECTOR	ROOM 505	●	
2.1.6.0	SOUNDER BASE SYSTEM SMOKE DETECTOR	ROOM 506	●	
2.1.7.0	SOUNDER BASE SYSTEM SMOKE DETECTOR	ROOM 507	●	
2.1.8.0	SOUNDER BASE SYSTEM SMOKE DETECTOR	ROOM 508	●	
2.1.9.0	SOUNDER BASE SYSTEM SMOKE DETECTOR	ROOM 509	●	
2.1.10.0	SOUNDER BASE SYSTEM SMOKE DETECTOR	ROOM 510	●	
2.1.11.0	SOUNDER BASE SYSTEM SMOKE DETECTOR	ROOM 511	●	
2.1.12.0	SOUNDER BASE SYSTEM SMOKE DETECTOR	ROOM 512	●	
2.1.13.0	SOUNDER BASE SYSTEM SMOKE DETECTOR	ROOM 513	●	
2.1.14.0	SOUNDER BASE SYSTEM SMOKE DETECTOR	ROOM 514	●	
2.1.15.0	SOUNDER BASE SYSTEM SMOKE DETECTOR	ROOM 515	●	
2.1.16.0	SOUNDER BASE SYSTEM SMOKE DETECTOR	ROOM 516	●	
2.1.17.0	SOUNDER BASE SYSTEM SMOKE DETECTOR	ROOM 517	●	
2.1.18.0	SOUNDER BASE SYSTEM SMOKE DETECTOR	ROOM 518	●	
2.1.20.0	SOUNDER BASE SYSTEM SMOKE DETECTOR	ROOM 520	●	
2.1.22.0	SOUNDER BASE SYSTEM SMOKE DETECTOR	ROOM 522	●	
2.1.24.0	SOUNDER BASE SYSTEM SMOKE DETECTOR	ROOM 524	●	
2.1.26.0	SOUNDER BASE SYSTEM SMOKE DETECTOR	ROOM 526	●	
2.1.28.0	SOUNDER BASE SYSTEM SMOKE DETECTOR	ROOM 528	●	
2.1.30.0	SOUNDER BASE SYSTEM SMOKE DETECTOR	ROOM 530	●	
2.1.31.0	SYSTEM SMOKE DETECTOR	ROOM 531	●	
2.1.32.0	SOUNDER BASE SYSTEM SMOKE DETECTOR	ROOM 532	●	
2.1.33.0	SOUNDER BASE SYSTEM SMOKE DETECTOR	ROOM 533	●	
2.1.34.0	SOUNDER BASE SYSTEM SMOKE DETECTOR	ROOM 534	●	
2.1.35.0	SOUNDER BASE SYSTEM SMOKE DETECTOR	ROOM 535	●	
2.1.36.0	SOUNDER BASE SYSTEM SMOKE DETECTOR	ROOM 536	●	
2.1.37.0	SOUNDER BASE SYSTEM SMOKE DETECTOR	ROOM 537	●	
2.1.38.0	SYSTEM SMOKE DETECTOR	ROOM 538	●	
2.1.39.0	SOUNDER BASE SYSTEM SMOKE DETECTOR	ROOM 539	●	
2.1.41.0	PULL STATION	5TH FLOOR STAIR 1 EXIT	●	
2.1.42.0	SYSTEM SMOKE DETECTOR	5TH FLOOR CORRIDOR	●	
2.1.43.0	SYSTEM SMOKE DETECTOR	5TH FLOOR CORRIDOR	●	

SLC DEVICE INFORMATION				
ADDRESS	DESCRIPTION	LOCATION	EVAC	RELATE 1 RELATE 2 RELATE 3
2.1.44.0	SYSTEM SMOKE DETECTOR	5TH FLOOR CORRIDOR	●	
2.1.45.0	SYSTEM SMOKE DETECTOR	5TH FLOOR CORRIDOR	●	
2.1.46.0	SYSTEM SMOKE DETECTOR	5TH FLOOR CORRIDOR	●	
2.1.47.0	SYSTEM SMOKE DETECTOR	5TH FLOOR CORRIDOR	●	
2.1.48.0	SYSTEM SMOKE DETECTOR	5TH FLOOR CORRIDOR	●	
2.1.49.0	SYSTEM SMOKE DETECTOR	5TH FLOOR CORRIDOR	●	
2.1.50.0	SYSTEM SMOKE DETECTOR	5TH FLOOR CORRIDOR	●	
2.1.51.0	PULL STATION	5TH FLOOR STAIR 2 EXIT	●	
2.1.52.1	DUAL INPUT MONITOR MODULE	5TH FLOOR WATERFLOW	●	
2.1.52.2	DUAL INPUT MONITOR MODULE	5TH FLOOR VALVE TAMPER	●	
2.1.53.0	SUPERVISED OUTPUT MODULE	ROOM 538 NAC DRIVER	●	
2.1.54.0	SUPERVISED OUTPUT MODULE	ROOM 517 NAC DRIVER	●	
2.1.56.0	SYSTEM SMOKE DETECTOR	5TH FLOOR ELEVATOR 1/2 LOBBY	●	1.1.36.1 1.1.37.1
2.1.57.0	SYSTEM SMOKE DETECTOR	5TH FLOOR HOUSEKEEPING	●	
2.1.58.0	SYSTEM SMOKE DETECTOR	ELEVATOR #1/2 TOP OF SHAFT	●	1.1.36.1 1.1.37.1 1.1.38.1a2
2.1.59.0	150 DEG FIXED HEAT DETECTOR	ELEVATOR #1/2 TOP OF SHAFT	●	1.1.34.1 1.1.34.2
2.1.60.0	SUPERVISED OUTPUT MODULE	ROOM 531 NAC DRIVER	●	

NOTIFICATION CIRCUIT TOTALS				
CIRCUIT #	Description	QTY	MILLIAMPERES	Speaker Watts
5	15 CD HORN STROBE	4	74	0
5	15 CD STROBE	1	55	0
		5	351	0

NORTECH SYSTEMS

20 HARR RD
BARRINGTON, NH 03825
VOICE: 603.664.0000
FAX: 603.664.7337
WWW.NORTECH-SYSTEMS.COM

PROJECT
JORDAN'S MIXED USE
207 & 209 FORE ST.
PORTLAND ME

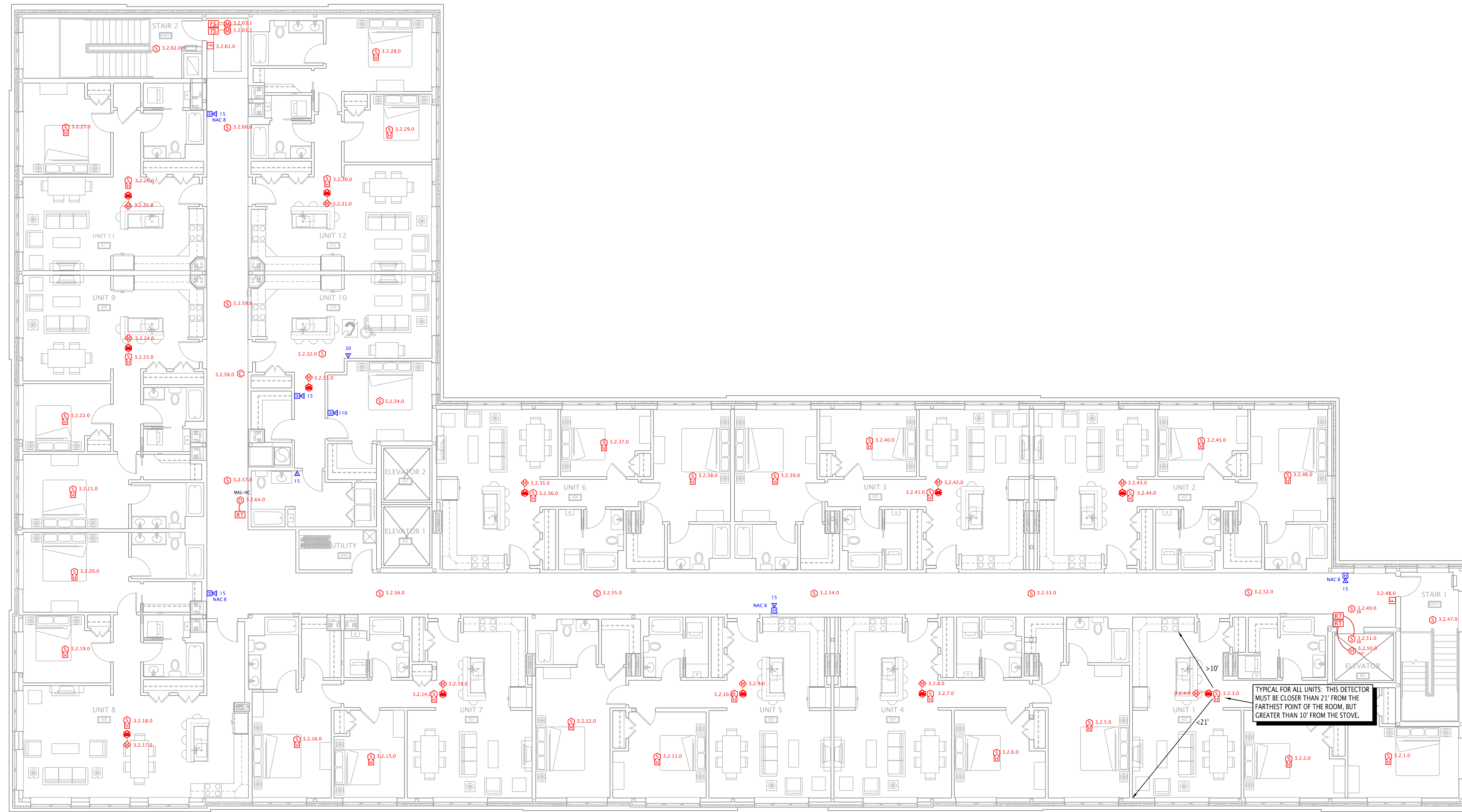
DATE: 11/15/10

NORTECH SYSTEMS

DRAWN BY: MDR
FOR: NORTHWIND ELECTRIC

REV.	DESCRIPTION	BY
12/7/10	REVISED PER PFD COMMENTS	MR

F5



- FIRE ALARM KEY**
(NOT ALL SYMBOLS MAY BE USED)
- [F] MANUAL PULL STATION
 - [S] SYSTEM SMOKE DETECTOR
 - [S_{ER}] SYSTEM SMOKE DETECTOR, ELEVATOR RECALL
 - [H_{135F}] HEAT DETECTOR
 - TEMPERATURE RATING
"R" INDICATES RATE OF RISE TYPE,
OTHERWISE FIXED TEMPERATURE
 - [S_W] SYSTEM SMOKE DETECTOR W/ SOUNDER BASE
 - [D] DUCT SMOKE DETECTOR
 - [A] STAND ALONE 120V SMOKE ALARM
 - [CM] CARBON MONOXIDE DETECTOR (SYSTEM)
 - [CM₁₂₀] CARBON MONOXIDE DETECTOR (120VAC STAND ALONE)
 - [CO] VISUAL SOUNDER FOR CO DETECTOR
 - [C] SUPERVISED CONTROL MODULE (SCM)
 - [Z] SHORT CIRCUIT ISOLATION MODULE (SCI)
 - [Z₂] 2-WIRE DETECTOR ZONE INTERFACE MODULE (CZM)
 - [R_{2M}] ADDRESSABLE DUAL RELAY MODULE (R2M)
 - [M₅] MINI MONITOR MODULE (FRMCE-5)
 - [M₄] MONITOR MODULE, BOX MOUNT (FRMCE-4)
 - [M₂] DUAL INPUT MONITOR MODULE (DIMM)
 - PANEL LOOP ADDRESS (PROGRAMMED ON DETECTOR) SUBADDRESS (ONLY FOR DUAL MODULES, ETC.)
 - [S_{1.1.1.0}] ADDRESSABLE DEVICE ADDRESSING SCHEME
 - [PS] SPRINKLER PRESSURE SWITCH
 - [TS] SPRINKLER TAMPER SWITCH
 - [FS] SPRINKLER FLOW SWITCH
 - [RT] REMOTE ALARM INDICATOR / REMOTE TEST SWITCH
 - [RA] FACP REMOTE ALARM SOUNDER
 - [ELR] END OF LINE RELAY
 - [ELR₁₅] END OF LINE RELAY
 - [H₁₅] WALL MOUNT HORN STROBE, NUMBER DENOTES CANDELA RATING MOUNT AT 80" A.F.F. OR 6" BELOW CEILING WHICHEVER IS LOWER, U.N.O. WP = WATERPROOF
 - [H] WALL MOUNT HORN MOUNT AT 80" A.F.F. OR 6" BELOW CEILING WHICHEVER IS LOWER, U.N.O. WP = WATERPROOF
 - [S₁₅] WALL MOUNT SPEAKER STROBE, NUMBER DENOTES CANDELA RATING MOUNT AT 80" A.F.F. OR 6" BELOW CEILING WHICHEVER IS LOWER, U.N.O. WP = WATERPROOF
 - [S] WALL MOUNT SPEAKER MOUNT AT 80" A.F.F. OR 6" BELOW CEILING WHICHEVER IS LOWER, U.N.O.
 - [S₁₅] WALL MOUNT STROBE, NUMBER DENOTES CANDELA RATING MOUNT AT 80" A.F.F. OR 6" BELOW CEILING WHICHEVER IS LOWER, U.N.O. WP = WATERPROOF
 - [C] CIRCLE AROUND NOTIFICATION DEVICE DENOTES CEILING MOUNTED (TYPICAL FOR ALL TYPES)
 - [SYN] STROBE SYNCHRONIZING MODULE
 - [AP] ANNUNCIATOR PANEL (SURFACE/FLUSH MOUNT)
 - [MB] MASTER BOX (SURFACE/FLUSH MOUNT)
 - [BAT] REMOTE BATTERY CABINET
 - [POWER] REMOTE POWER SUPPLY
 - [FACP] FACP
 - [FACP] FACP
 - [FACP] FIRE ALARM CONTROL PANEL (SURFACE/FLUSH)

1 6TH FLOOR FIRE ALARM PLAN
1/8" = 1'-0"

ADDRESS	DESCRIPTION	LOCATION	EVAC	RELATE 1	RELATE 2	RELATE 3
3.2.1.0	SOUNDER BASE SYSTEM SMOKE DETECTOR	CONDO #1	●			
3.2.2.0	SOUNDER BASE SYSTEM SMOKE DETECTOR	CONDO #1	●			
3.2.3.0	SOUNDER BASE SYSTEM SMOKE DETECTOR	CONDO #1	●			
3.2.4.0	MINI MONITOR MODULE	CONDO #1 CO DETECTOR				
3.2.5.0	SOUNDER BASE SYSTEM SMOKE DETECTOR	CONDO #4	●			
3.2.6.0	SOUNDER BASE SYSTEM SMOKE DETECTOR	CONDO #4	●			
3.2.7.0	SOUNDER BASE SYSTEM SMOKE DETECTOR	CONDO #4	●			
3.2.8.0	MINI MONITOR MODULE	CONDO #4 CO DETECTOR				
3.2.9.0	MINI MONITOR MODULE	CONDO #5 CO DETECTOR				
3.2.10.0	SOUNDER BASE SYSTEM SMOKE DETECTOR	CONDO #5	●			
3.2.11.0	SOUNDER BASE SYSTEM SMOKE DETECTOR	CONDO #5	●			
3.2.12.0	SOUNDER BASE SYSTEM SMOKE DETECTOR	CONDO #5	●			
3.2.13.0	MINI MONITOR MODULE	CONDO #7 CO DETECTOR				
3.2.14.0	SOUNDER BASE SYSTEM SMOKE DETECTOR	CONDO #7	●			
3.2.15.0	SOUNDER BASE SYSTEM SMOKE DETECTOR	CONDO #7	●			
3.2.16.0	SOUNDER BASE SYSTEM SMOKE DETECTOR	CONDO #7	●			
3.2.17.0	MINI MONITOR MODULE	CONDO #8 CO DETECTOR				
3.2.18.0	SOUNDER BASE SYSTEM SMOKE DETECTOR	CONDO #8	●			
3.2.19.0	SOUNDER BASE SYSTEM SMOKE DETECTOR	CONDO #8	●			
3.2.20.0	SOUNDER BASE SYSTEM SMOKE DETECTOR	CONDO #8	●			
3.2.21.0	SOUNDER BASE SYSTEM SMOKE DETECTOR	CONDO #9	●			
3.2.22.0	SOUNDER BASE SYSTEM SMOKE DETECTOR	CONDO #9	●			
3.2.23.0	SOUNDER BASE SYSTEM SMOKE DETECTOR	CONDO #9	●			
3.2.24.0	MINI MONITOR MODULE	CONDO #9 CO DETECTOR				
3.2.25.0	MINI MONITOR MODULE	CONDO #11 CO DETECTOR				
3.2.26.0	SOUNDER BASE SYSTEM SMOKE DETECTOR	CONDO #11	●			
3.2.27.0	SOUNDER BASE SYSTEM SMOKE DETECTOR	CONDO #11	●			
3.2.28.0	SOUNDER BASE SYSTEM SMOKE DETECTOR	CONDO #12	●			
3.2.29.0	SOUNDER BASE SYSTEM SMOKE DETECTOR	CONDO #12	●			
3.2.30.0	SOUNDER BASE SYSTEM SMOKE DETECTOR	CONDO #12	●			
3.2.31.0	SYSTEM SMOKE DETECTOR	CONDO #10	●			
3.2.33.0	MINI MONITOR MODULE	CONDO #10 CO DETECTOR				
3.2.34.0	SYSTEM SMOKE DETECTOR	CONDO #10	●			
3.2.35.0	MINI MONITOR MODULE	CONDO #6 CO DETECTOR				
3.2.36.0	SOUNDER BASE SYSTEM SMOKE DETECTOR	CONDO #6	●			
3.2.37.0	SOUNDER BASE SYSTEM SMOKE DETECTOR	CONDO #6	●			

ADDRESS	DESCRIPTION	LOCATION	EVAC	RELATE 1	RELATE 2	RELATE 3
3.2.38.0	SOUNDER BASE SYSTEM SMOKE DETECTOR	CONDO #6	●			
3.2.39.0	SOUNDER BASE SYSTEM SMOKE DETECTOR	CONDO #3	●			
3.2.40.0	SOUNDER BASE SYSTEM SMOKE DETECTOR	CONDO #3	●			
3.2.41.0	SOUNDER BASE SYSTEM SMOKE DETECTOR	CONDO #3	●			
3.2.42.0	MINI MONITOR MODULE	CONDO #3 CO DETECTOR				
3.2.43.0	MINI MONITOR MODULE	CONDO #2 CO DETECTOR				
3.2.44.0	SOUNDER BASE SYSTEM SMOKE DETECTOR	CONDO #2	●			
3.2.45.0	SOUNDER BASE SYSTEM SMOKE DETECTOR	CONDO #2	●			
3.2.46.0	SOUNDER BASE SYSTEM SMOKE DETECTOR	CONDO #2	●			
3.2.47.0	SYSTEM SMOKE DETECTOR	TOP OF STAIR #1	●			
3.2.48.0	PULL STATION	6TH FLOOR STAIR #1 EXIT	●			
3.2.49.0	SYSTEM SMOKE DETECTOR	6TH FLOOR ELEVATOR LOBBY	●	3.1.1.1		
3.2.50.0	150 DEG FIXED HEAT DETECTOR	ELEVATOR #3 TOP OF SHAFT	●	1.1.35.1		
3.2.51.0	SYSTEM SMOKE DETECTOR	ELEVATOR #2 TOP OF SHAFT	●	3.1.1.1		
3.2.52.0	SYSTEM SMOKE DETECTOR	6TH FLOOR CORRIDOR	●			
3.2.53.0	SYSTEM SMOKE DETECTOR	6TH FLOOR CORRIDOR	●			
3.2.54.0	SYSTEM SMOKE DETECTOR	6TH FLOOR CORRIDOR	●			
3.2.55.0	SYSTEM SMOKE DETECTOR	6TH FLOOR CORRIDOR	●			
3.2.56.0	SYSTEM SMOKE DETECTOR	6TH FLOOR CORRIDOR	●			
3.2.57.0	SYSTEM SMOKE DETECTOR	6TH FLOOR CORRIDOR	●			
3.2.58.0	SUPERVISED OUTPUT MODULE	CONDO #10 NAC DRIVE	●			
3.2.59.0	SYSTEM SMOKE DETECTOR	6TH FLOOR CORRIDOR	●			
3.2.60.0	SYSTEM SMOKE DETECTOR	6TH FLOOR CORRIDOR	●			
3.2.61.0	PULL STATION	6TH FLOOR STAIR #2 EXIT	●			
3.2.62.0	SYSTEM SMOKE DETECTOR	TOP OF STAIRWELL #2	●			
3.2.63.1	DUAL INPUT MONITOR MODULE	6TH FLOOR WATERFLOW	●			
3.2.63.2	DUAL INPUT MONITOR MODULE	6TH FLOOR VALVE TAMPER	●			
3.2.64.0	DUCT SMOKE DETECTOR	MAU-HC (6TH FLOOR)	●			

NOTIFICATION CIRCUIT TOTALS				
CIRCUIT #	Description	QTY	MILLIAMPERES	Speaker Watts
8	15 CD HORN STROBE	4	74	0
		4	296	0

NORTECH SYSTEMS

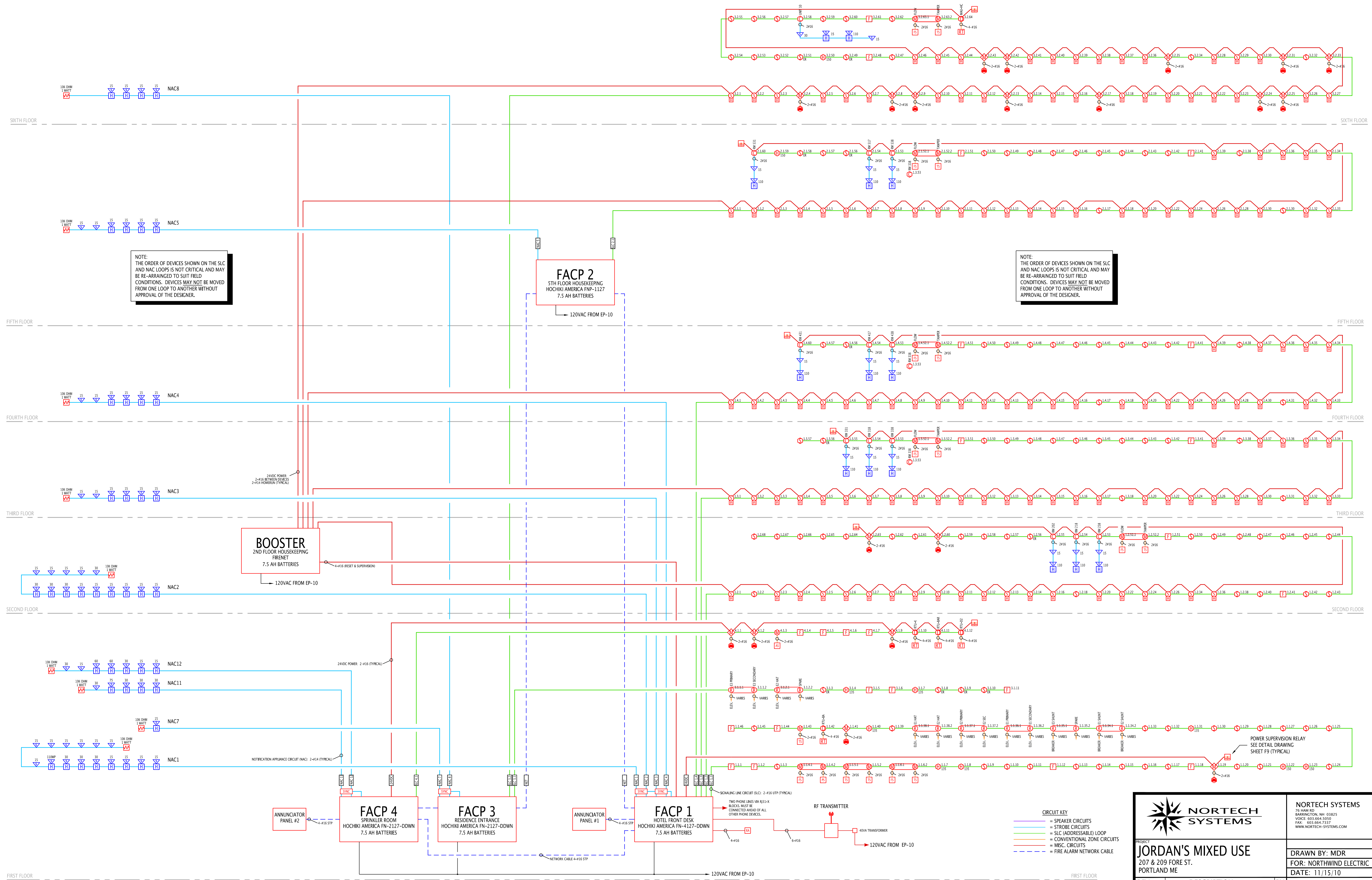
20 HARR RD
BARRINGTON, NH 03825
VOICE: 603.664.0500
FAX: 603.664.7337
WWW.NORTECH-SYSTEMS.COM

PROJECT: **JORDAN'S MIXED USE**
207 & 209 FORE ST.
PORTLAND ME

DATE: 11/15/10

DRAWN BY: MDR
FOR: NORTHWIND ELECTRIC

F6



		NORTECH SYSTEMS 26 HARR RD BARRINGTON, NH 03825 VOICE: 603.664.0500 FAX: 603.664.7337 WWW.NORTECH-SYSTEMS.COM	
		PROJECT JORDAN'S MIXED USE 207 & 209 FORE ST. PORTLAND ME	
DRAWN BY: MDR FOR: NORTHWIND ELECTRIC DATE: 11/15/10		REV. DESCRIPTION BY 12/7/8/10 REVISED PER PFD COMMENTS MDR	
		F7	

