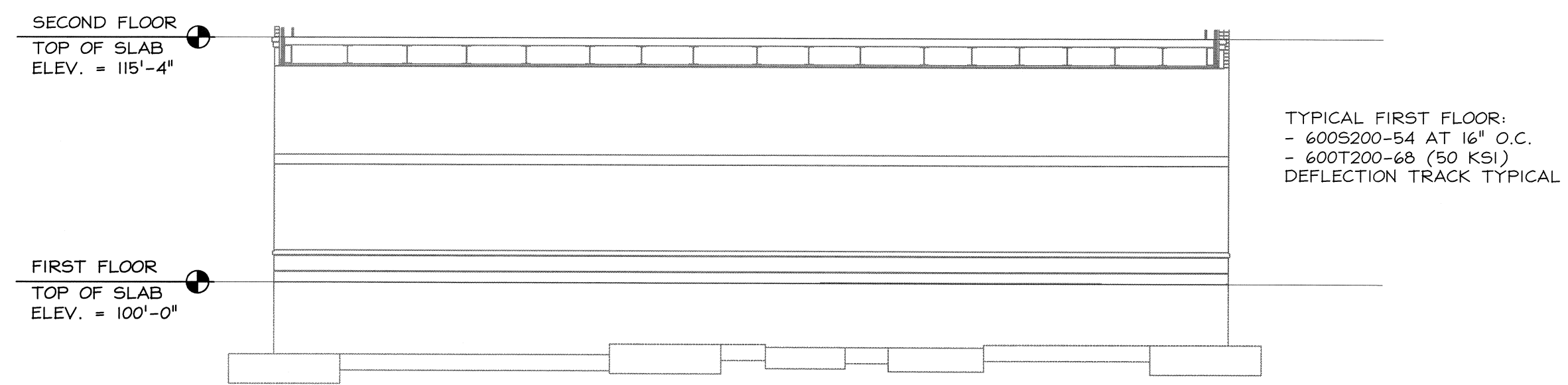
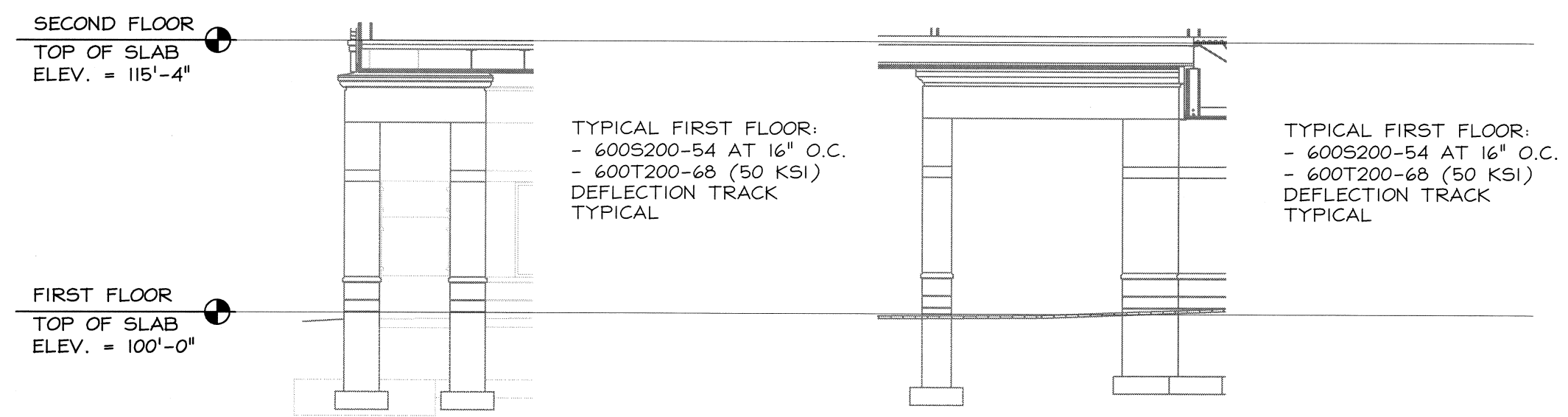


1 EAST VALET ELEVATION
LG3 Scale: 1/8" = 1'

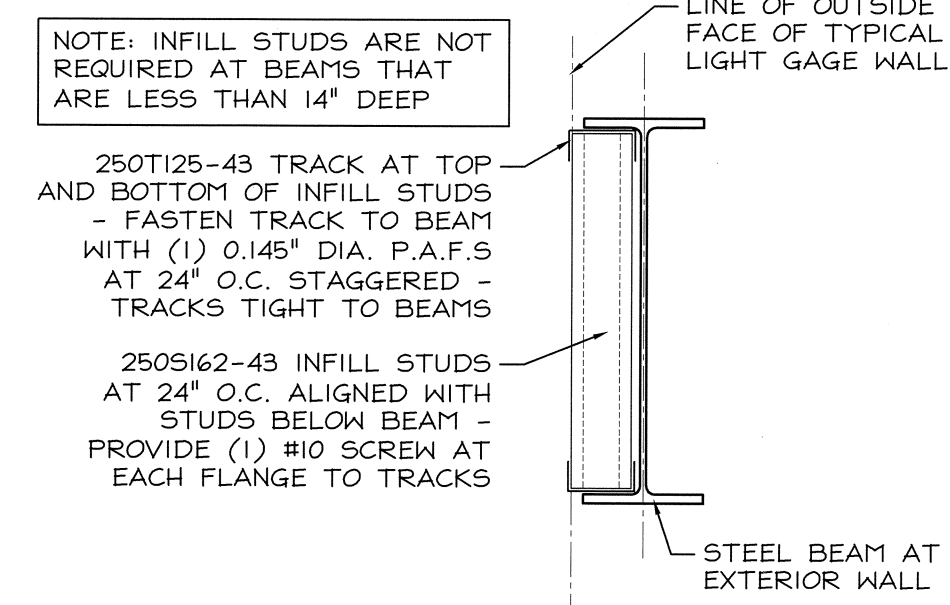


2 WEST VALET ELEVATION
LG3 Scale: 1/8" = 1'

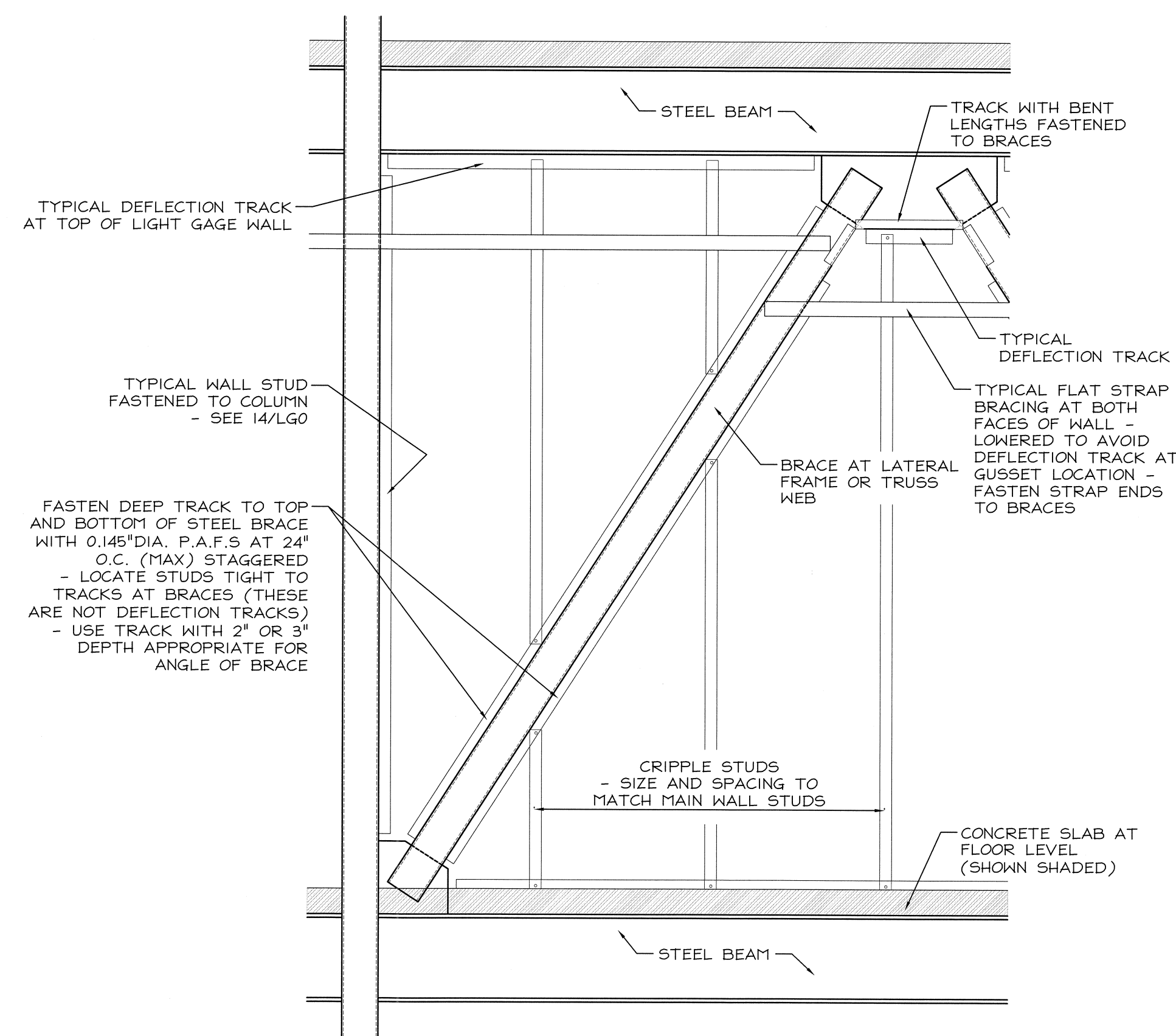


3 EAST VESTIBULE
LG3 Scale: 1/8" = 1'

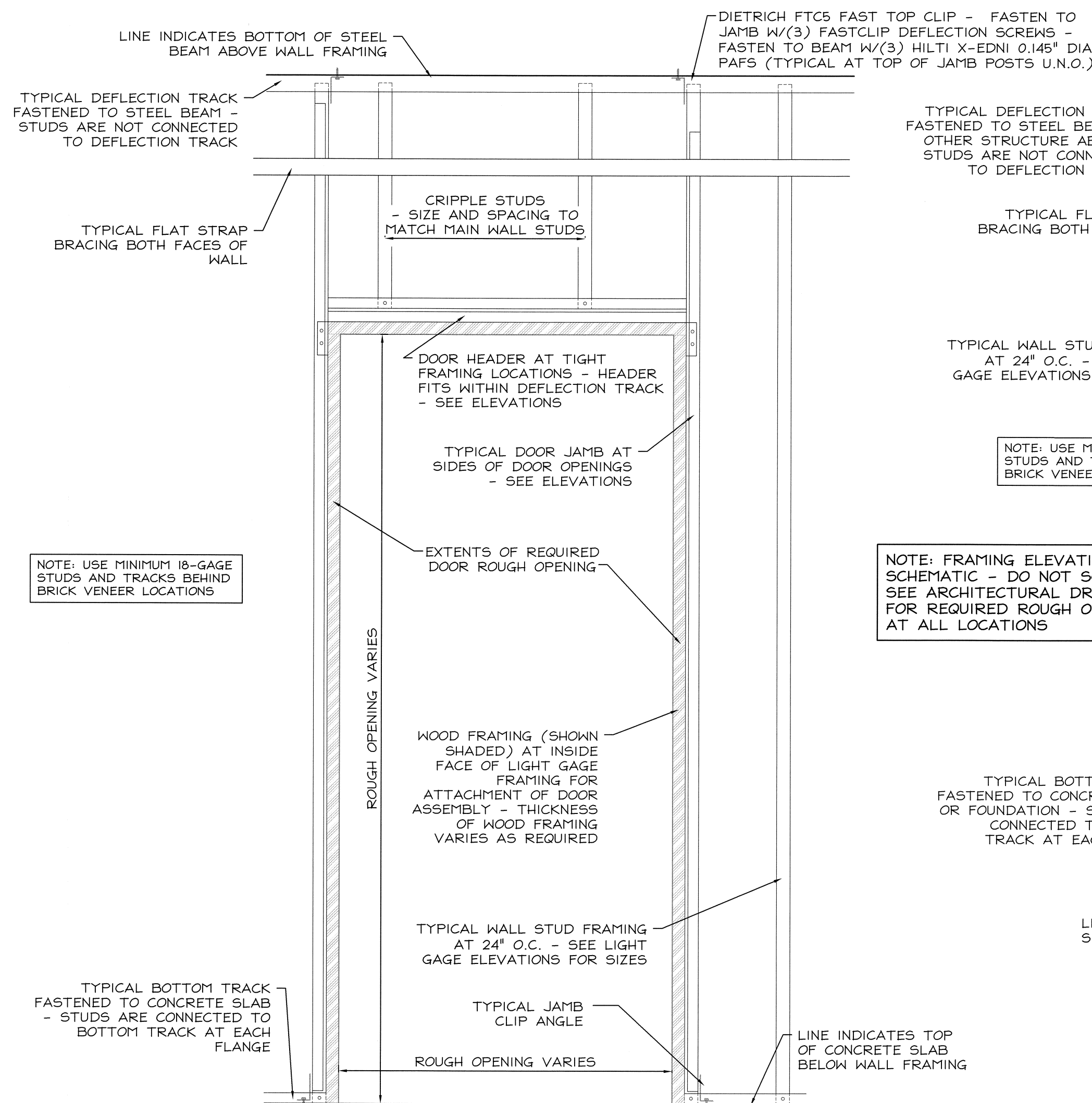
4 NORTH VESTIBULE (SOUTH MIRRORRED)
LG3 Scale: 1/8" = 1'



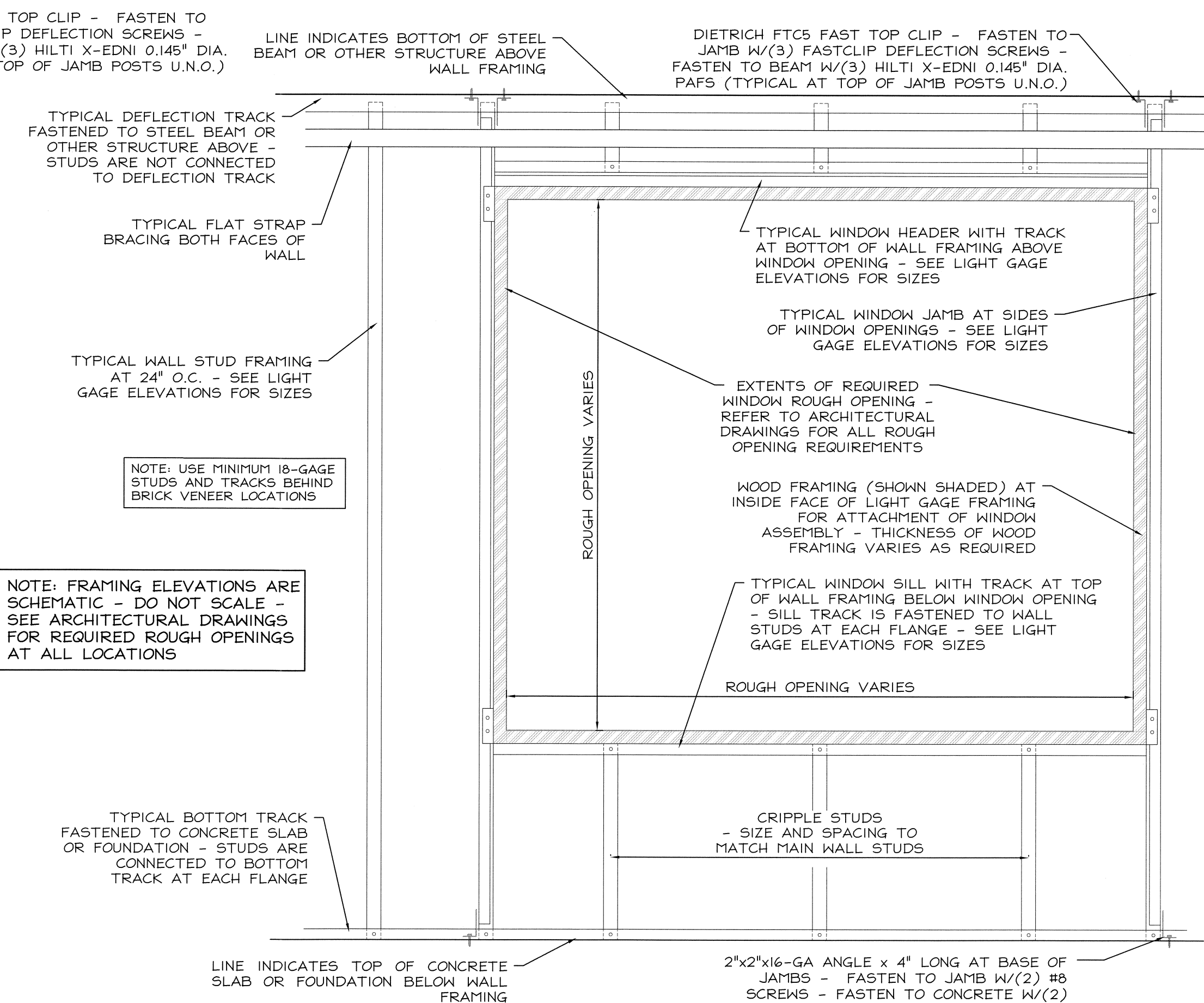
5 INFILL STUDS AT BEAM
LG3 Scale: 1-1/2" = 1'-0"



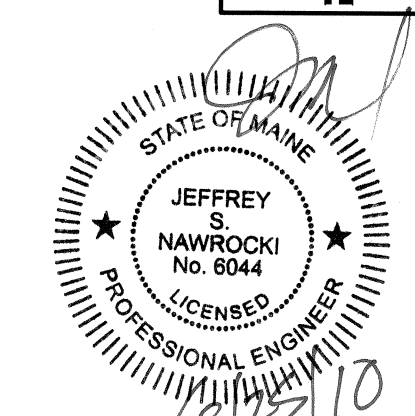
6 FRAMING AT BRACES
LG3 Scale: 3/4" = 1'-0"



7 LIGHT GAGE FRAMING AT DOOR OPENING
LG3 Scale: 1" = 1'-0"



8 LIGHT GAGE FRAMING AT WINDOW OPENING
LG3 Scale: 1" = 1'-0"



One Autumn Street
Portsmouth, NH 03801
(603) 433-8639
Fax: (603) 431-2811
Associates, Inc.

REVISION	SCHEDULE	BY	DATE
1	DESIGN DESCRIPTION	MJA	12/11/09
2	REVISED FOR COMPLETED ARCHITECTURAL DRAWINGS	MJA	

LOPECHEE
CONSTRUCTION CORPORATION
11 CORPORATE DRIVE, BELMONT NH 03320
PHONE (603) 527-9996 FAX (603) 527-9191

LIGHT GAGE WALL SECTIONS

Hotel, Restaurant, Portside Residences
PORTLAND, MAINE

DATE: 06-25-10
SCALE: AS NOTED
DRAWN BY: MJA
LG3
SHEET:
JUN PROJECT NO 091012.1