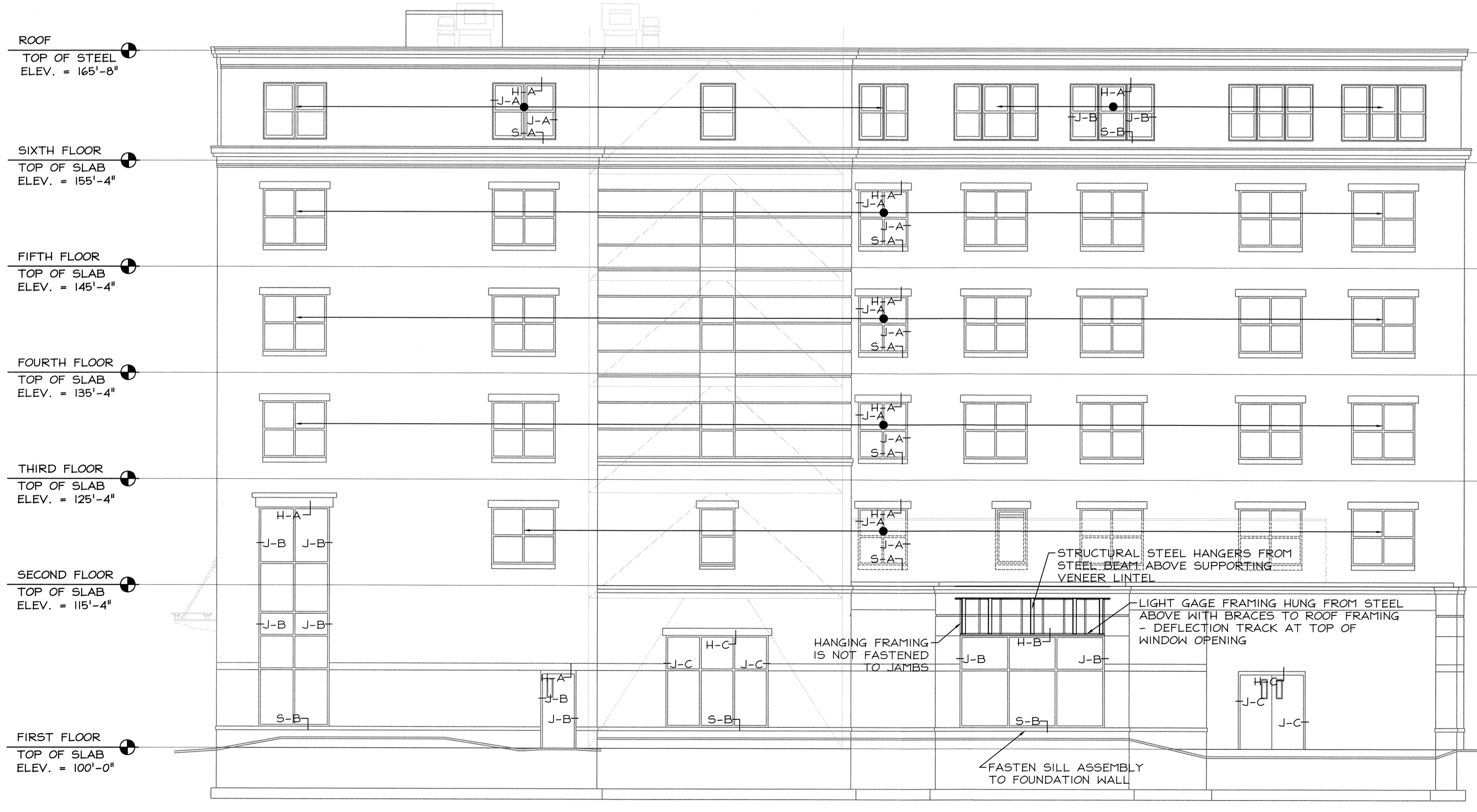




1 WEST ELEVATION
LG2 Scale: 1/8" = 1'



2 EAST ELEVATION
LG2 Scale: 1/8" = 1'

SIXTH FLOOR:
- 600S162-43 AT 24" O.C. TYP.
- 600T200-68 (50 KSI)
DEFLECTION TRACK TYPICAL

FIFTH FLOOR:
- 600S162-43 AT 24" O.C. TYP.
- 600T200-68 (50 KSI)
DEFLECTION TRACK TYPICAL

FOURTH FLOOR:
- 600S162-43 AT 24" O.C. TYP.
- 600T200-68 (50 KSI)
DEFLECTION TRACK TYPICAL

THIRD FLOOR:
- 600S162-43 AT 24" O.C. TYP.
- 600T200-68 (50 KSI)
DEFLECTION TRACK TYPICAL

SECOND FLOOR:
- 600S162-43 AT 24" O.C. TYP.
- 600T200-68 (50 KSI)
DEFLECTION TRACK TYPICAL

TYPICAL FIRST FLOOR:
- 600S200-54 AT 16" O.C.
- 600T200-68 (50 KSI)
DEFLECTION TRACK TYPICAL

SIXTH FLOOR:
- 600S162-43 AT 24" O.C. TYP.
- 600T200-68 (50 KSI)
DEFLECTION TRACK TYPICAL

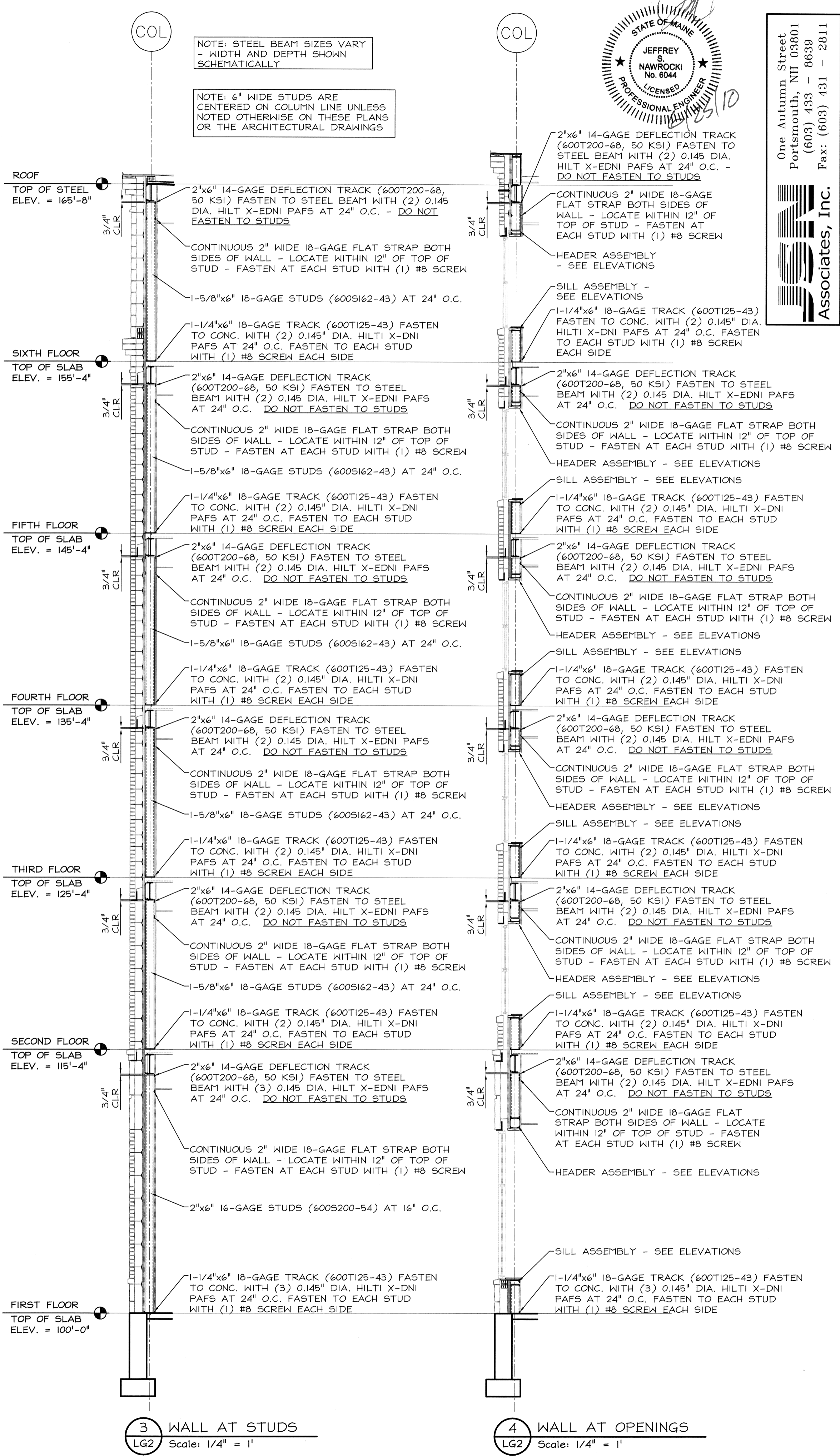
FIFTH FLOOR:
- 600S162-43 AT 24" O.C. TYP.
- 600T200-68 (50 KSI)
DEFLECTION TRACK TYPICAL

FOURTH FLOOR:
- 600S162-43 AT 24" O.C. TYP.
- 600T200-68 (50 KSI)
DEFLECTION TRACK TYPICAL

THIRD FLOOR:
- 600S162-43 AT 24" O.C. TYP.
- 600T200-68 (50 KSI)
DEFLECTION TRACK TYPICAL

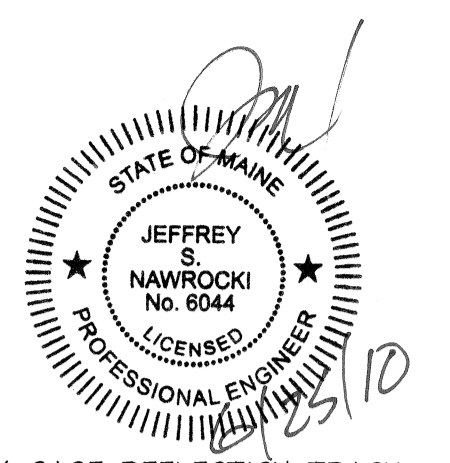
SECOND FLOOR:
- 600S162-43 AT 24" O.C. TYP.
- 600T200-68 (50 KSI)
DEFLECTION TRACK TYPICAL

TYPICAL FIRST FLOOR:
- 600S200-54 AT 16" O.C.
- 600T200-68 (50 KSI)
DEFLECTION TRACK TYPICAL

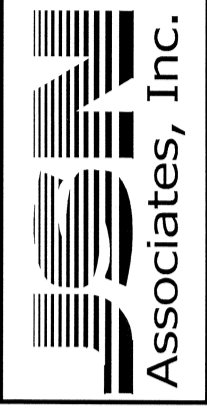


3 WALL AT STUDS
LG2 Scale: 1/4" = 1'

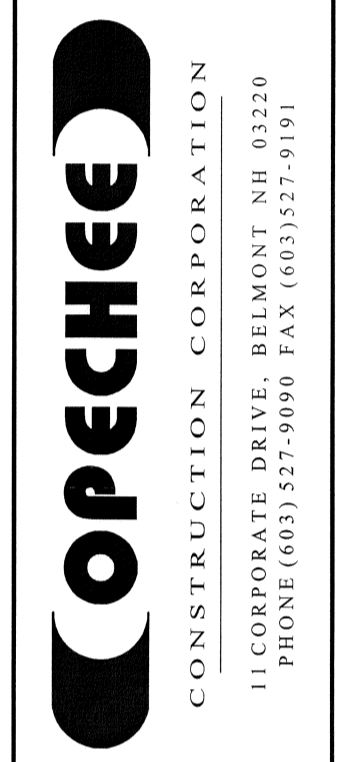
4 WALL AT OPENINGS
LG2 Scale: 1/4" = 1'



One Autumn Street
Portsmouth, NH 03801
(603) 433-8639
Fax: (603) 431-2811



BY	DATE	REVISION	SCHEDULE
MJA	12/17/09	REVISED FOR COMPLETED ARCHITECTURAL DRAWINGS	



LIGHT GAGE
ELEVATIONS AND
WALL SECTIONS

PROJECT: Hotel, Restaurant, Portside Residences
PORTLAND, MAINE

DATE: 06-25-10
SCALE: AS NOTED
DRAWN BY: MJA

LG2
SHEET:
JSN PROJECT NO 091012.1