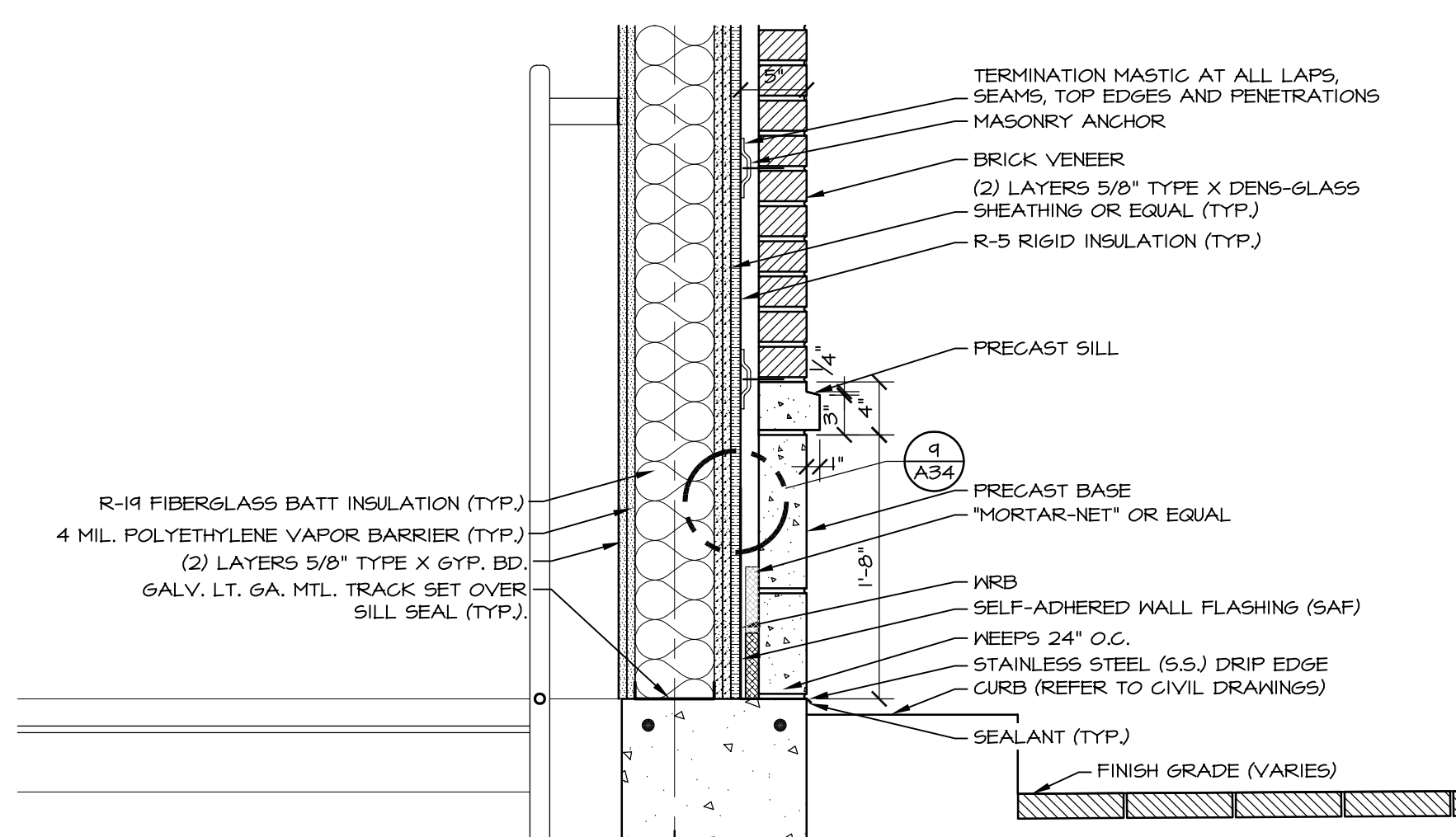
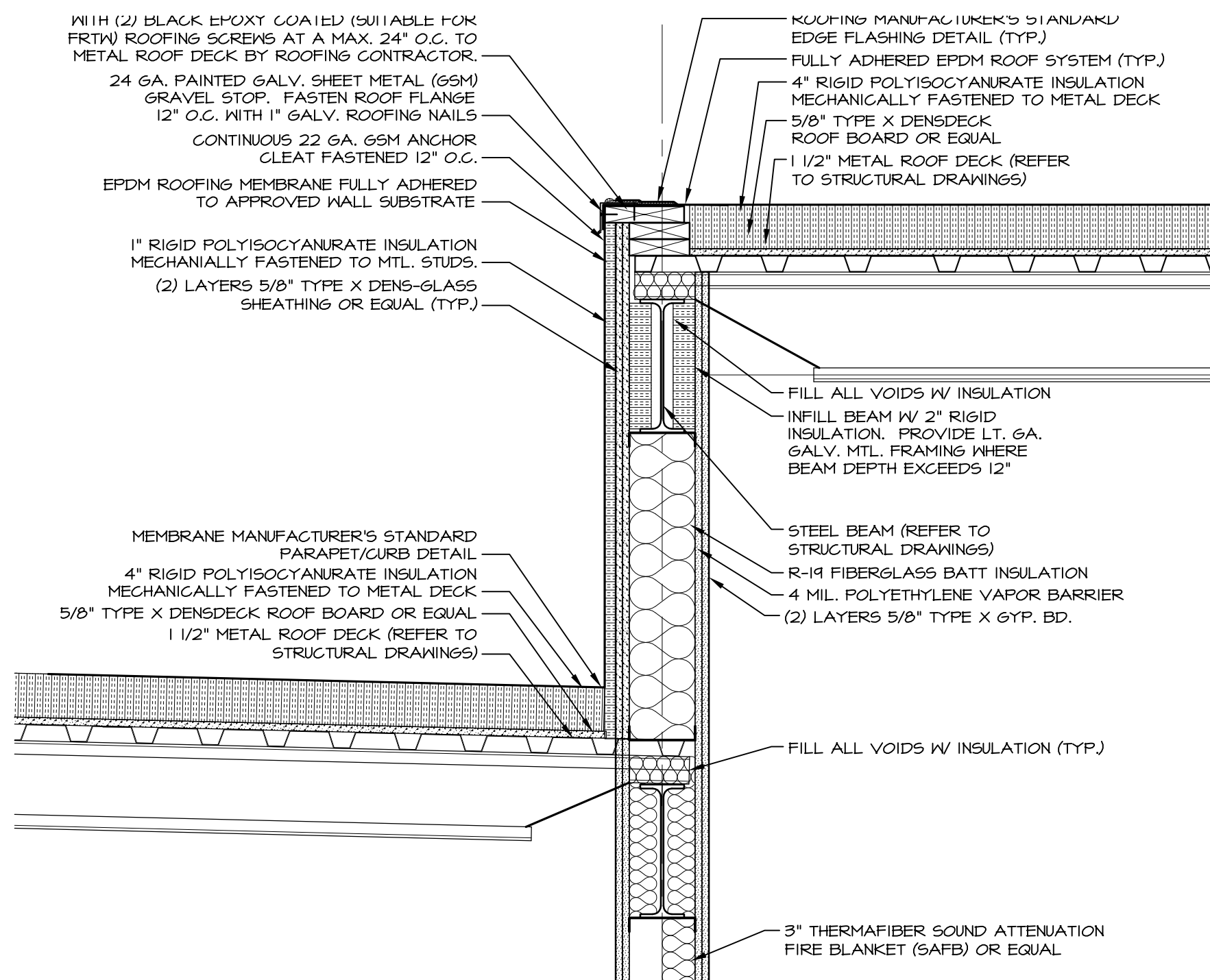


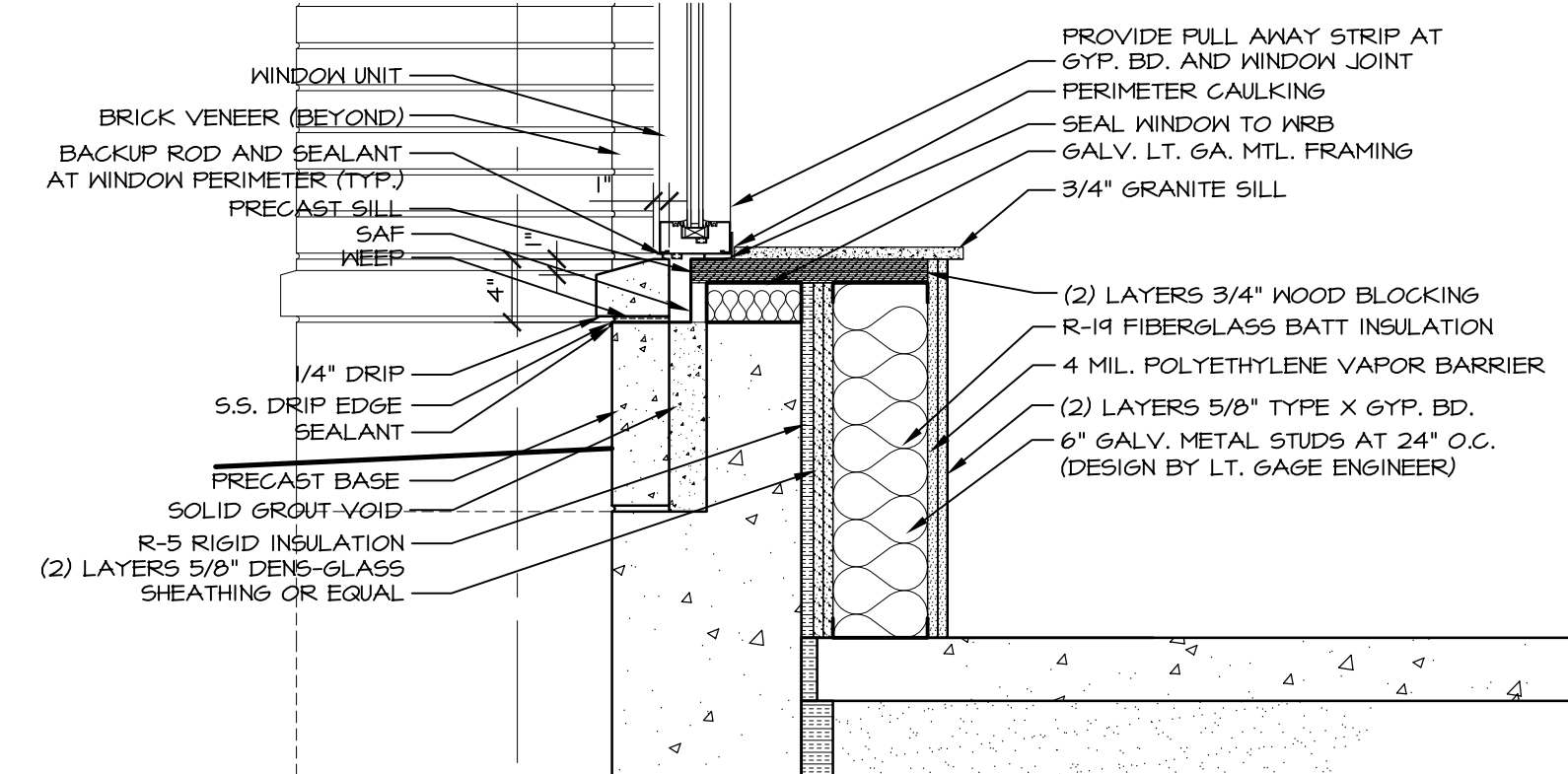
3 VALET SOFFIT DETAIL
A38 1" = 1'-0"



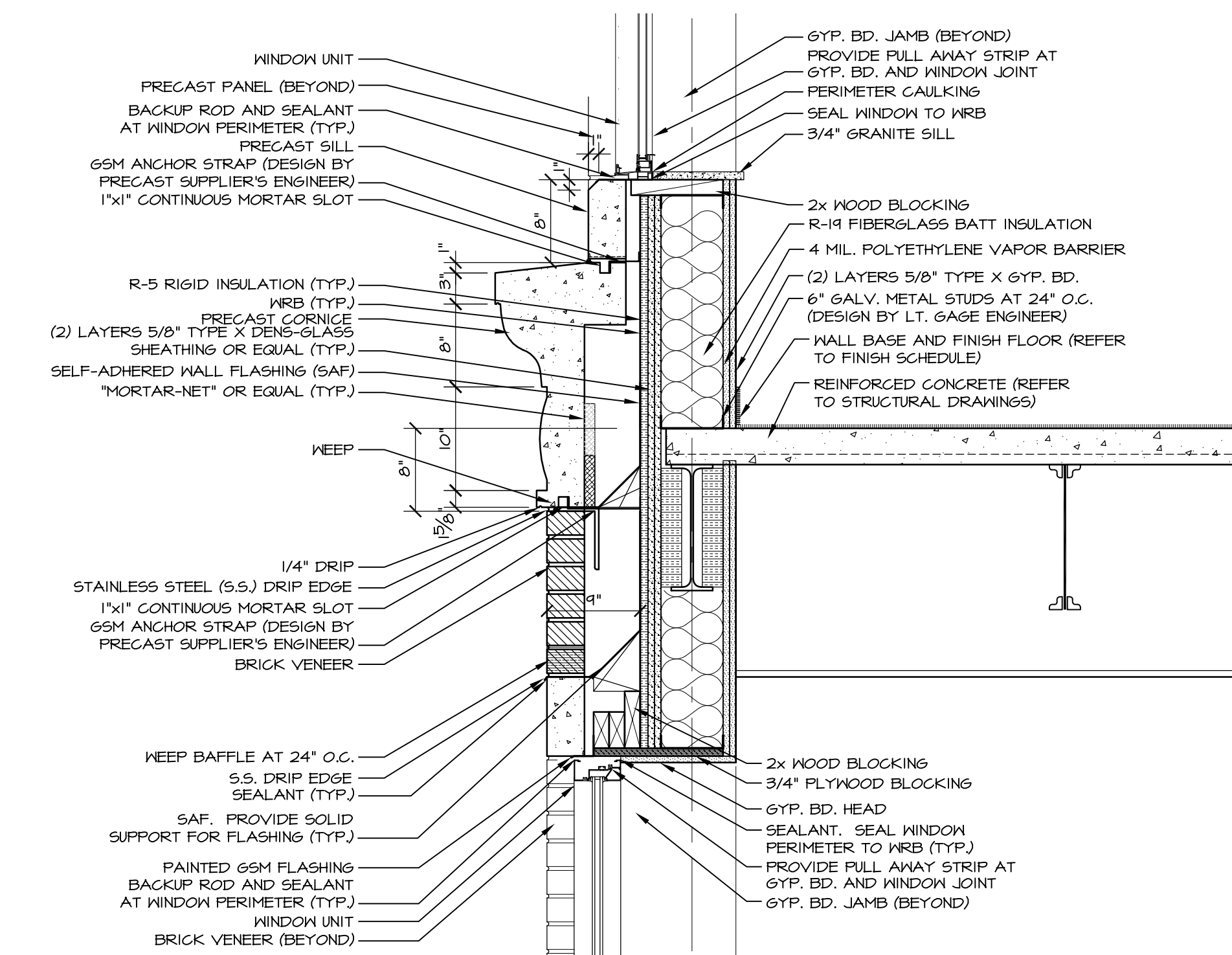
2 WALL BASE DETAIL AT VALET
A38 1" = 1'-0"



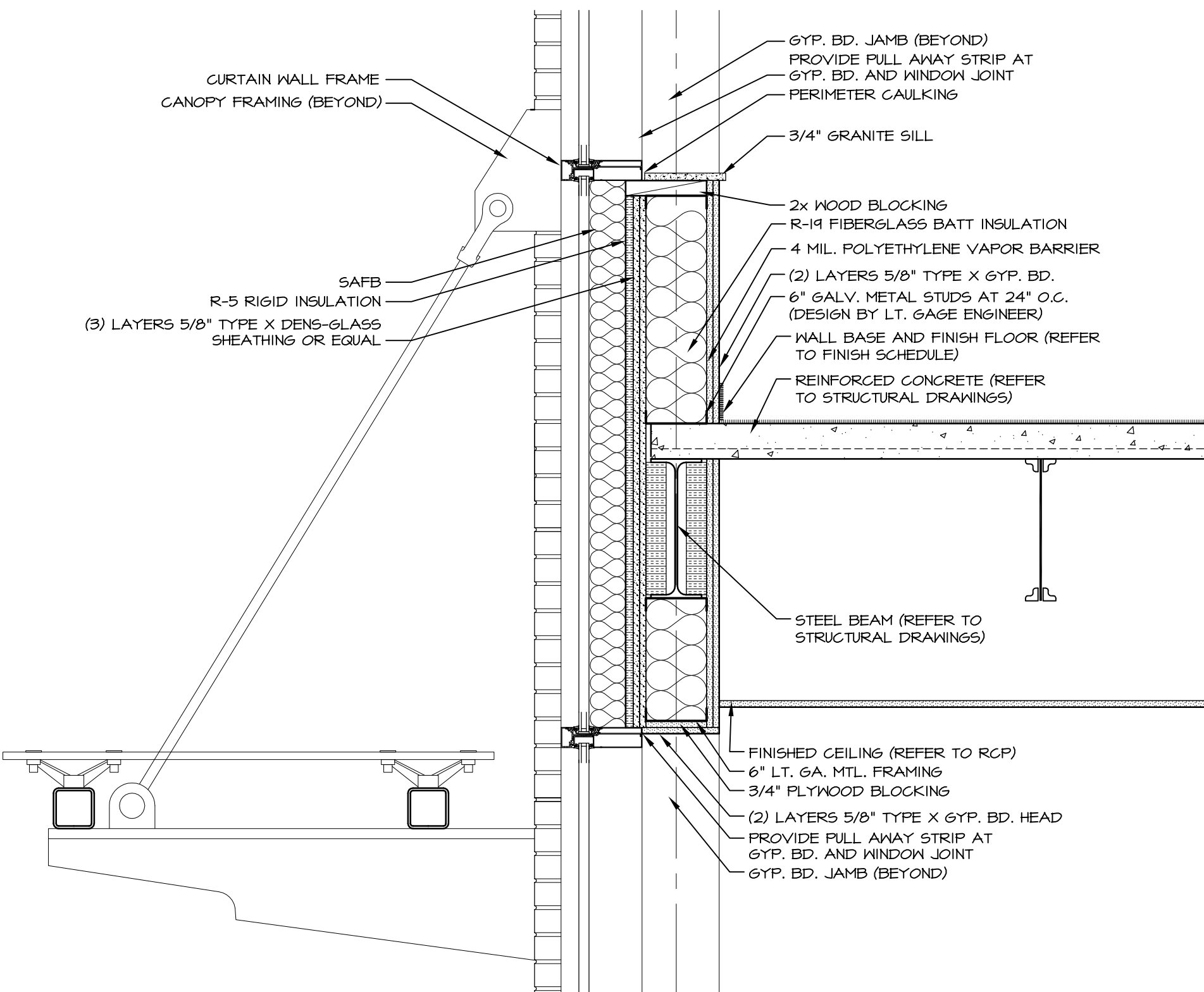
1 ELEVATOR PARAPET DETAIL (TYPICAL)
A38 1" = 1'-0"



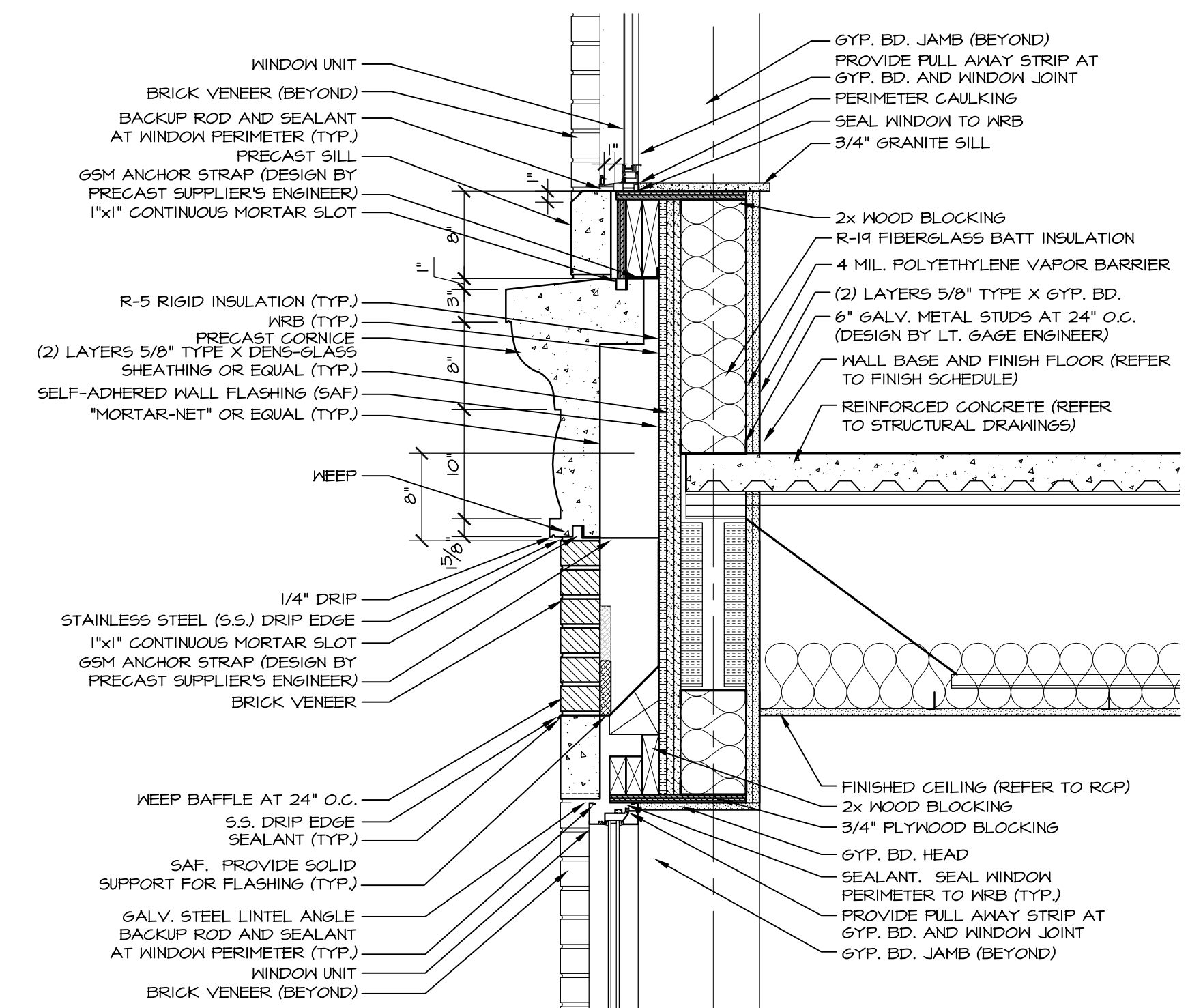
6 WINDOW SILL DETAIL
A38 1" = 1'-0"



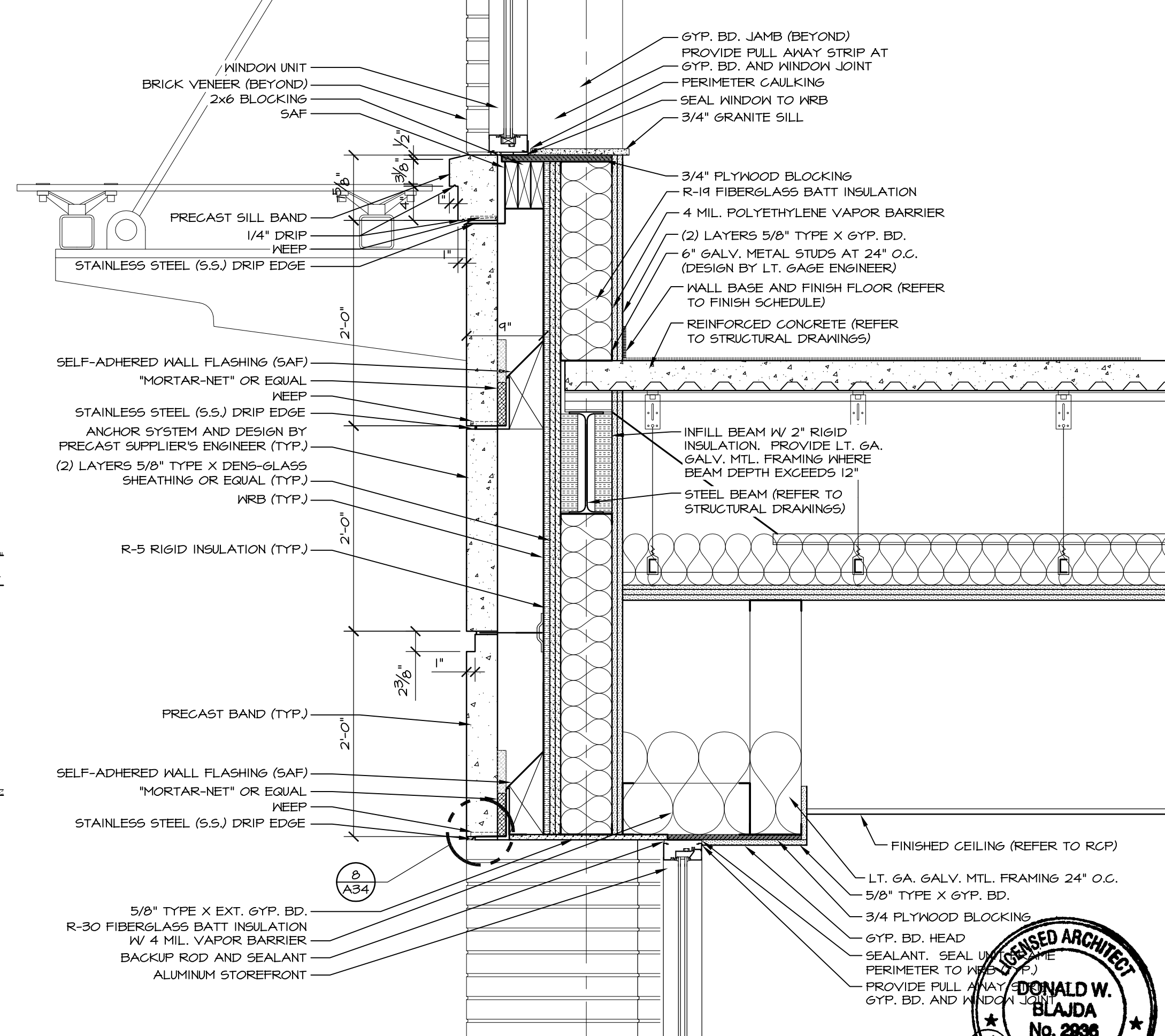
5 WINDOW HEAD & STRING COURSE DETAIL
A38 1" = 1'-0"



4 SPANDREL PANEL DETAIL
A38 1" = 1'-0"



8 WINDOW HEAD & STRING COURSE DETAIL
A38 1" = 1'-0"



7 WINDOW HEAD/SILL DETAIL
A38 1" = 1'-0"

REVISION SCHEDULE	REVISION DESCRIPTION	DATE	BY

COPECHED
CONSTRUCTION CORPORATION
11 CORPORATE DRIVE, BELMONT, NH 03220
PHONE (603) 271-2090 FAX (603) 271-9191

EXTERIOR WALL SECTION DETAIL

PROJECT: **Hotel, Restaurant, & Portside Residences** Portland ME

DATE: 08-05-10
SCALE: SEE PLAN
DRAWN BY: dmb
A38
SHEET:

