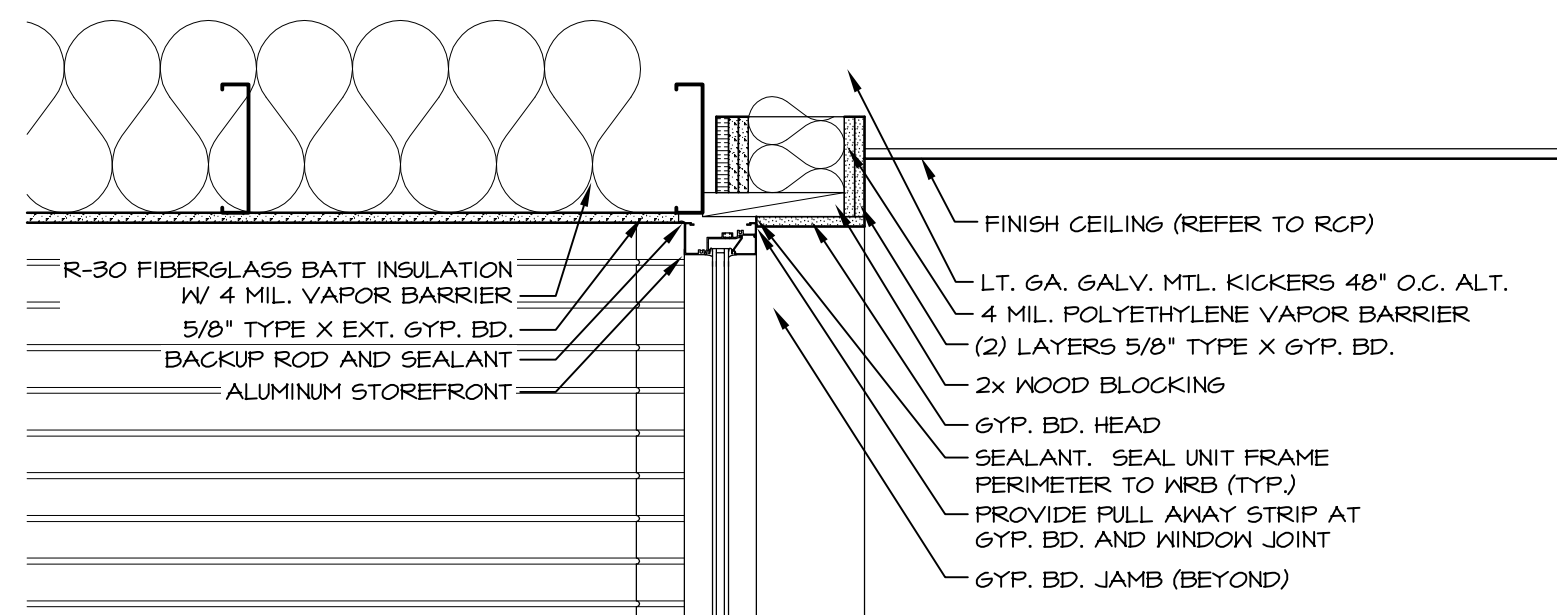
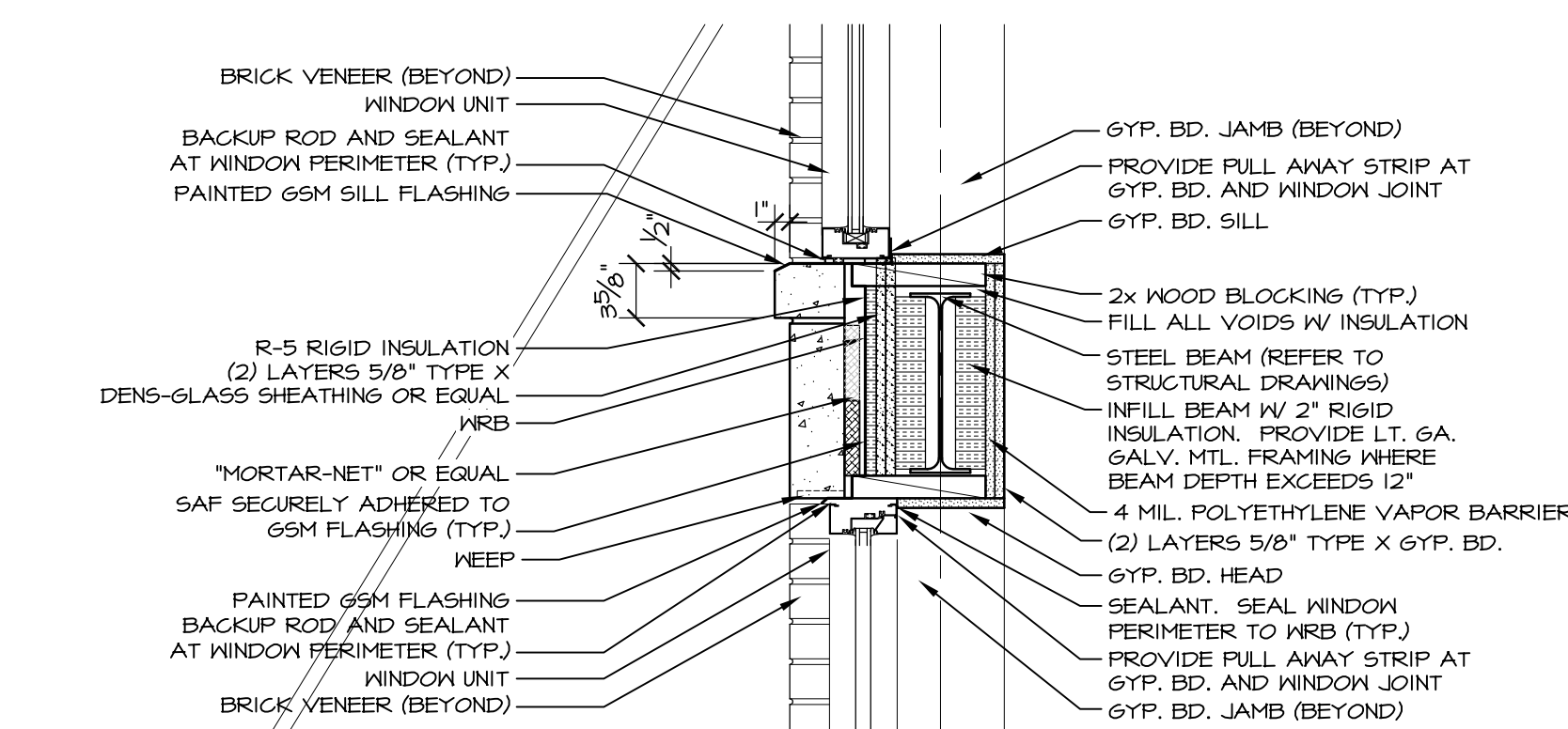


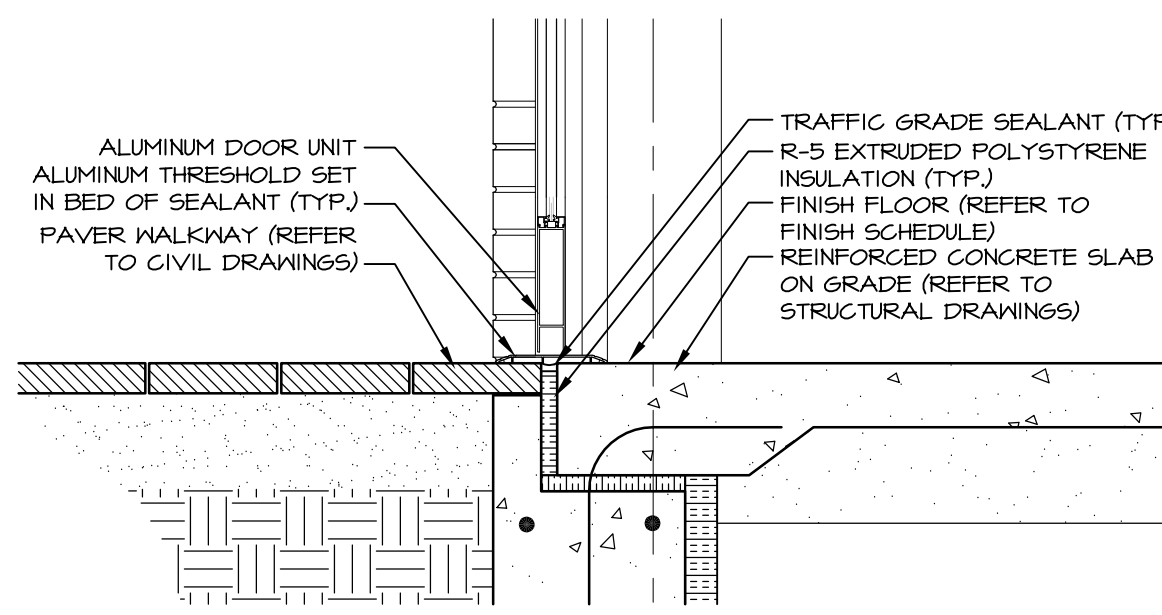
4 PRECAST ENTRY CORNICE DETAIL  
A37 1" = 1'-0"



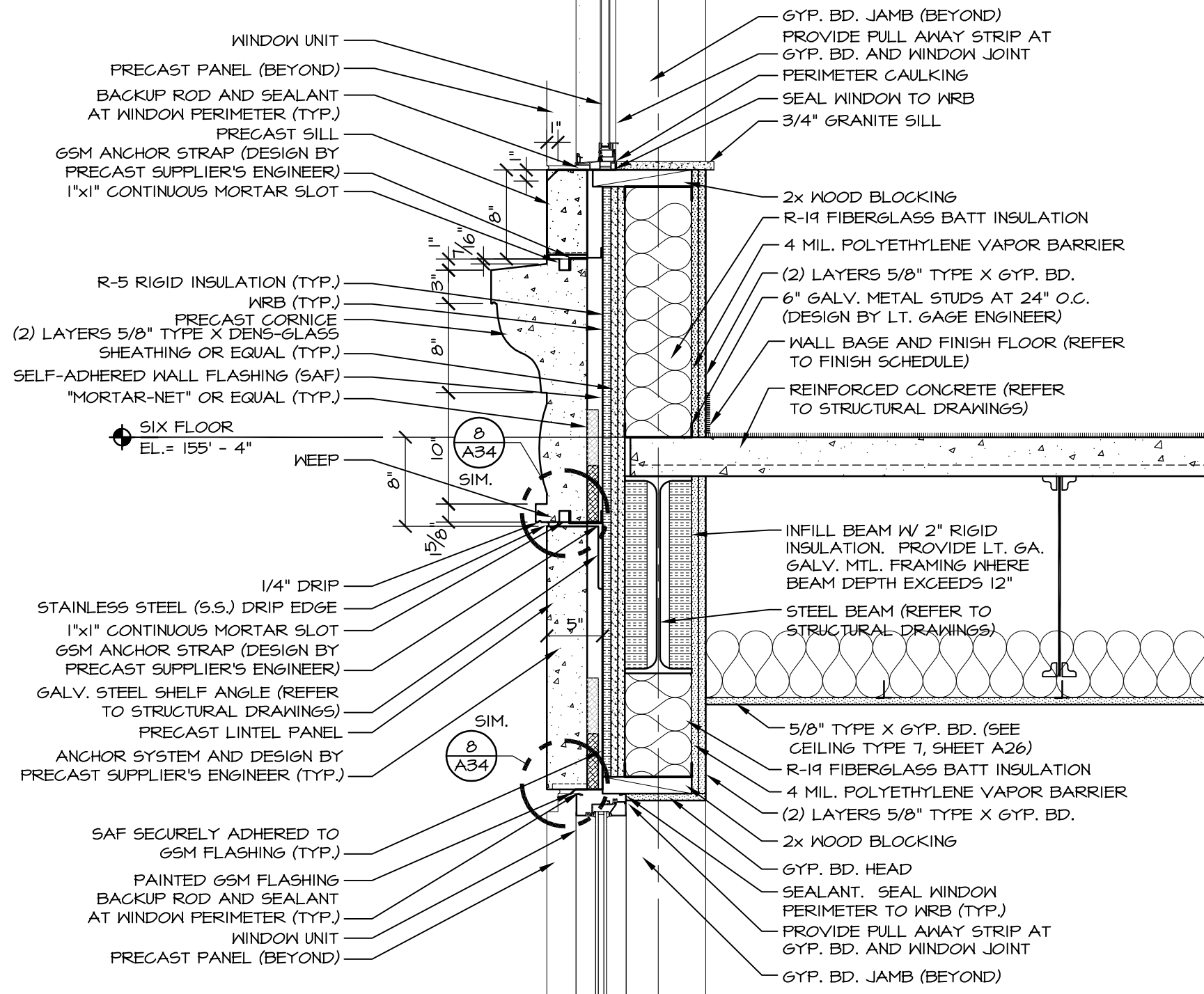
3 STOREFRONT HEAD DETAIL  
A37 1" = 1'-0"



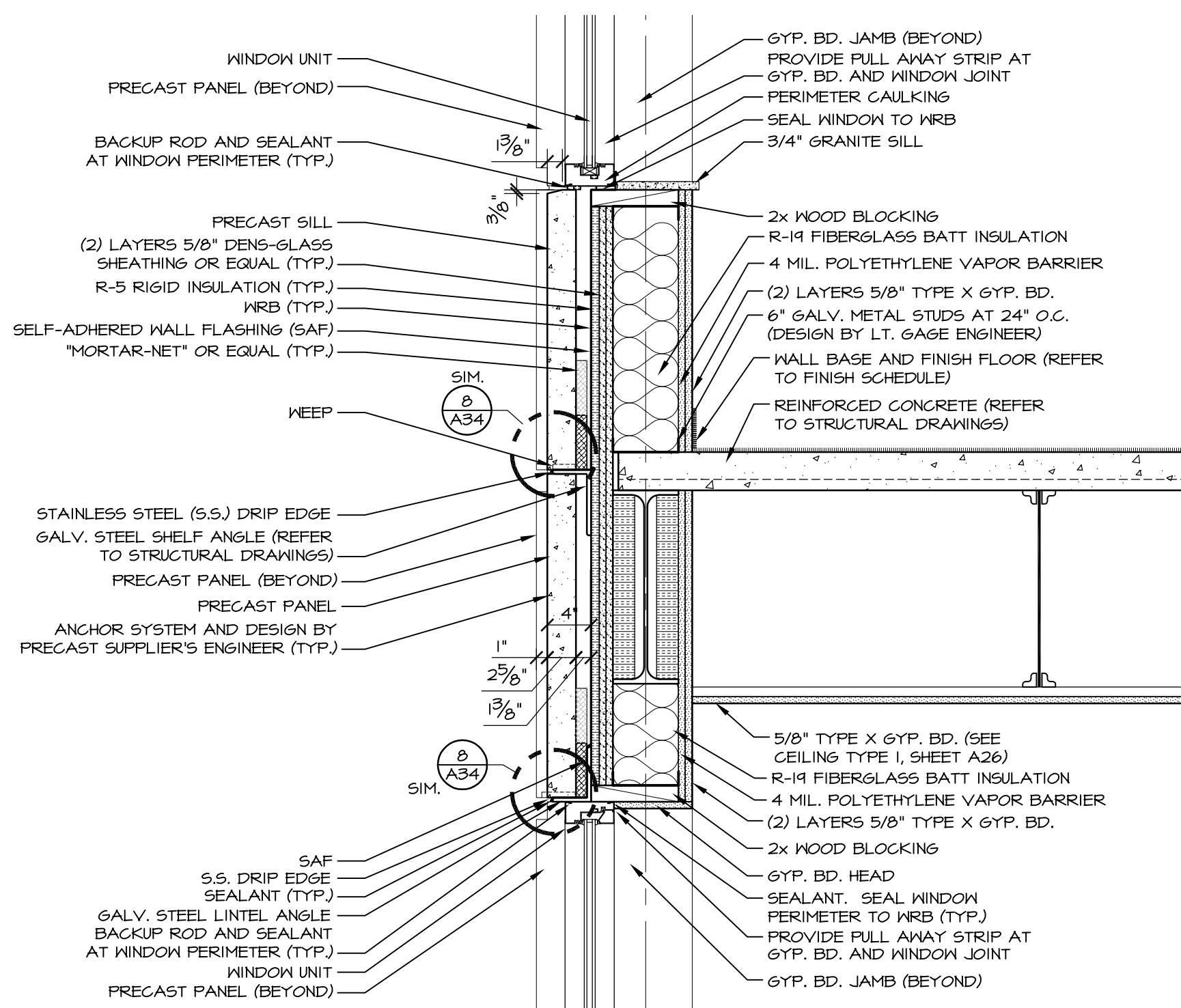
2 PRECAST LINTEL/SILL DETAIL  
A37 1" = 1'-0"



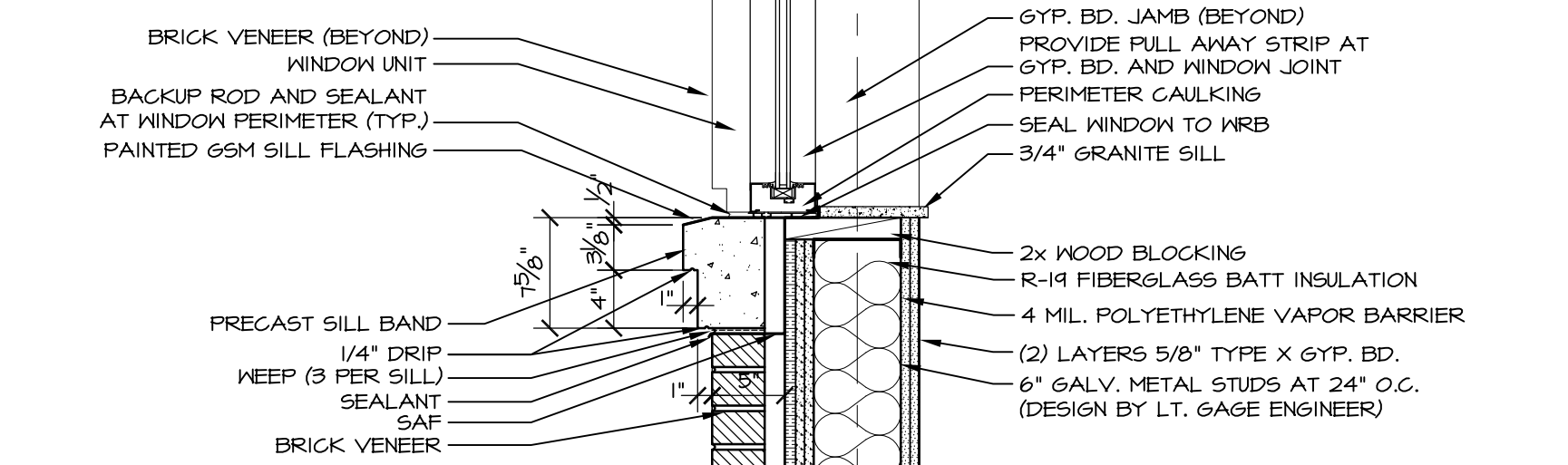
1 DOOR SILL DETAIL (TYPICAL)  
A37 1" = 1'-0"



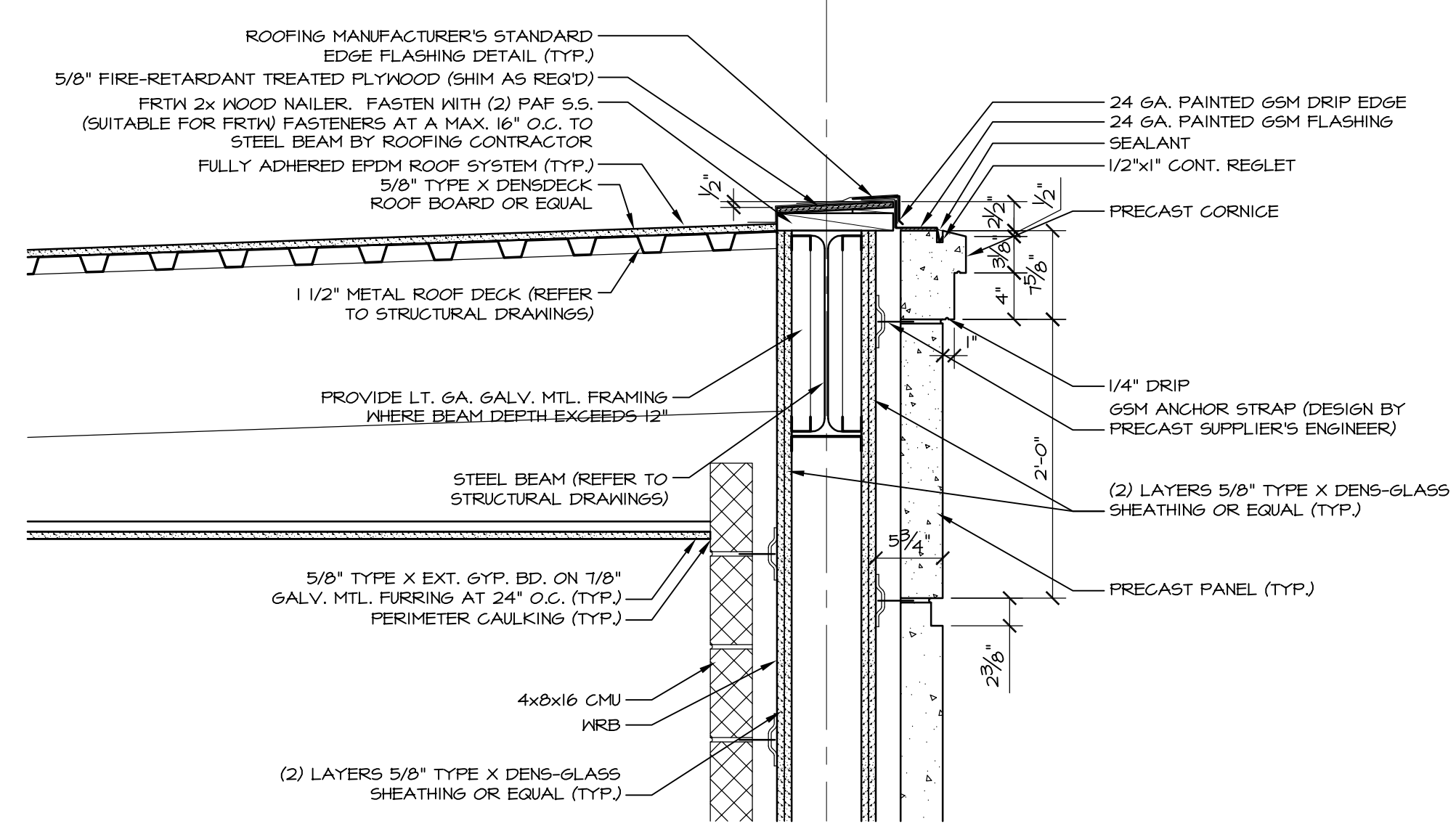
7 PRECAST LINTEL/CORNICE/SILL DETAIL  
A37 1" = 1'-0"



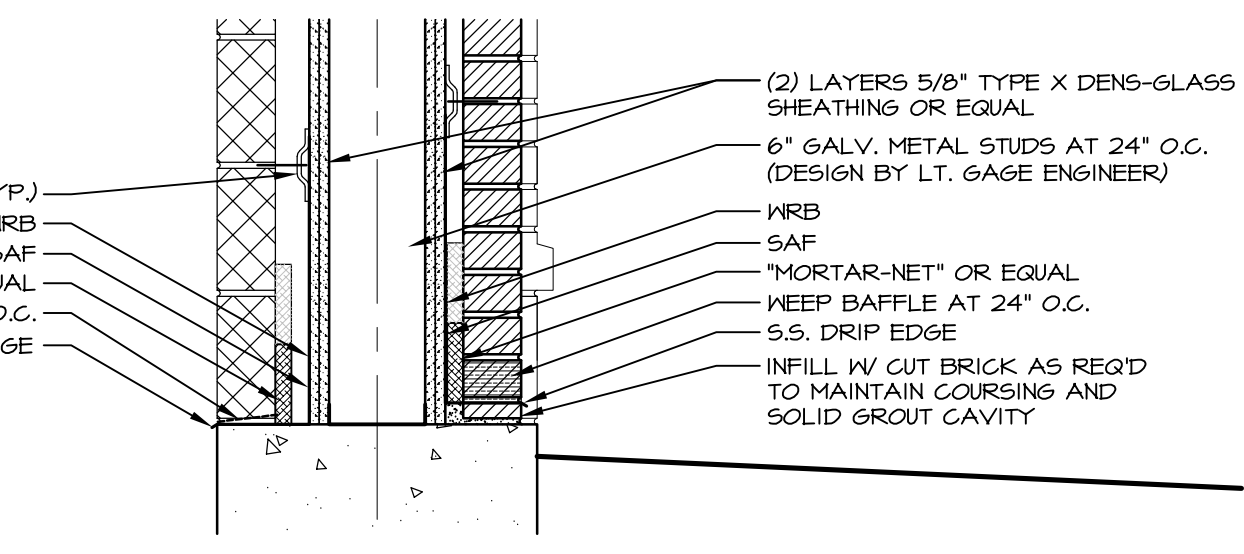
6 PRECAST RECESSED LINTEL/SILL DETAIL  
A37 1" = 1'-0"



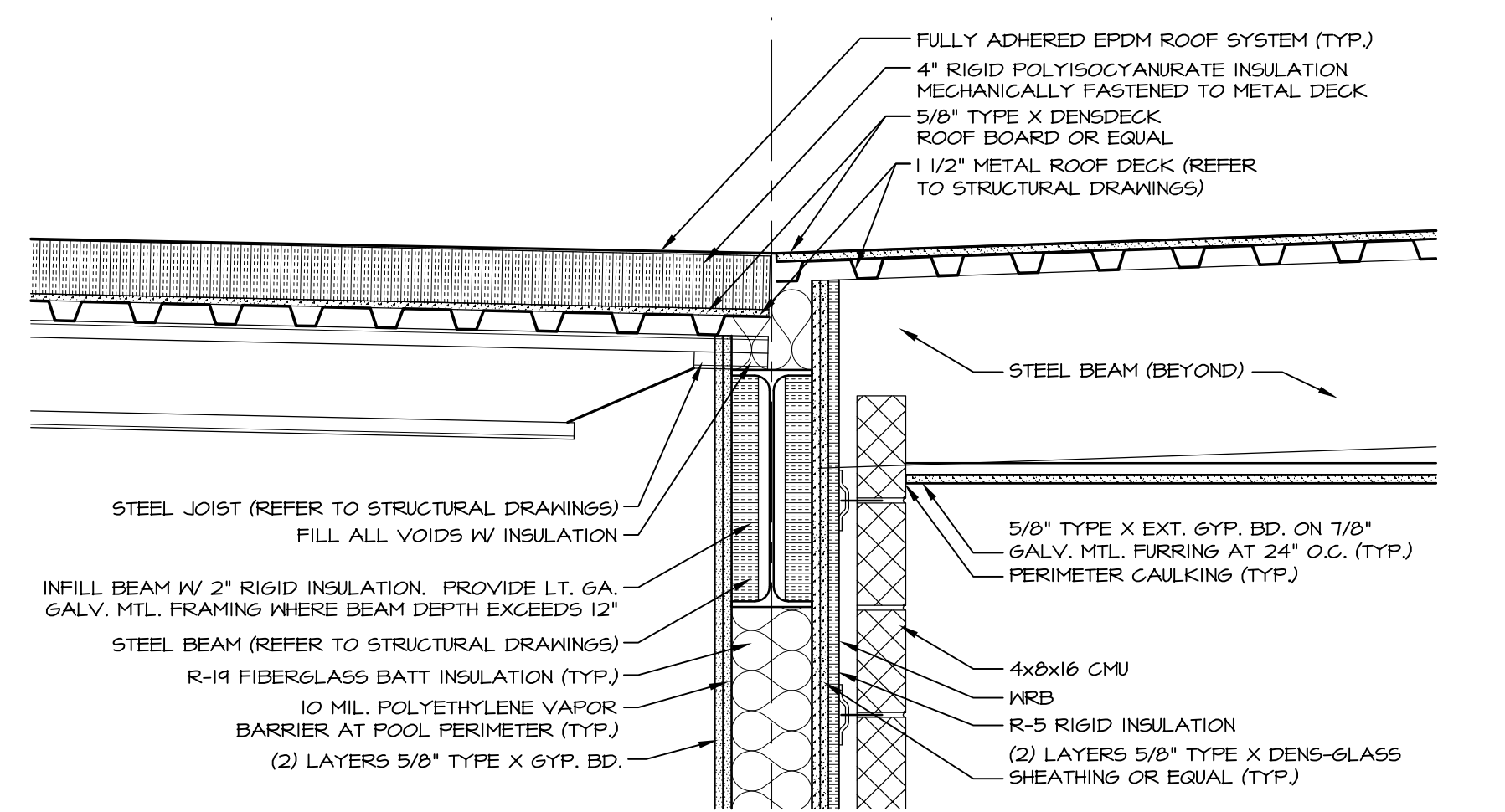
5 PRECAST STRING COURSE/SILL DETAIL  
A37 1" = 1'-0"



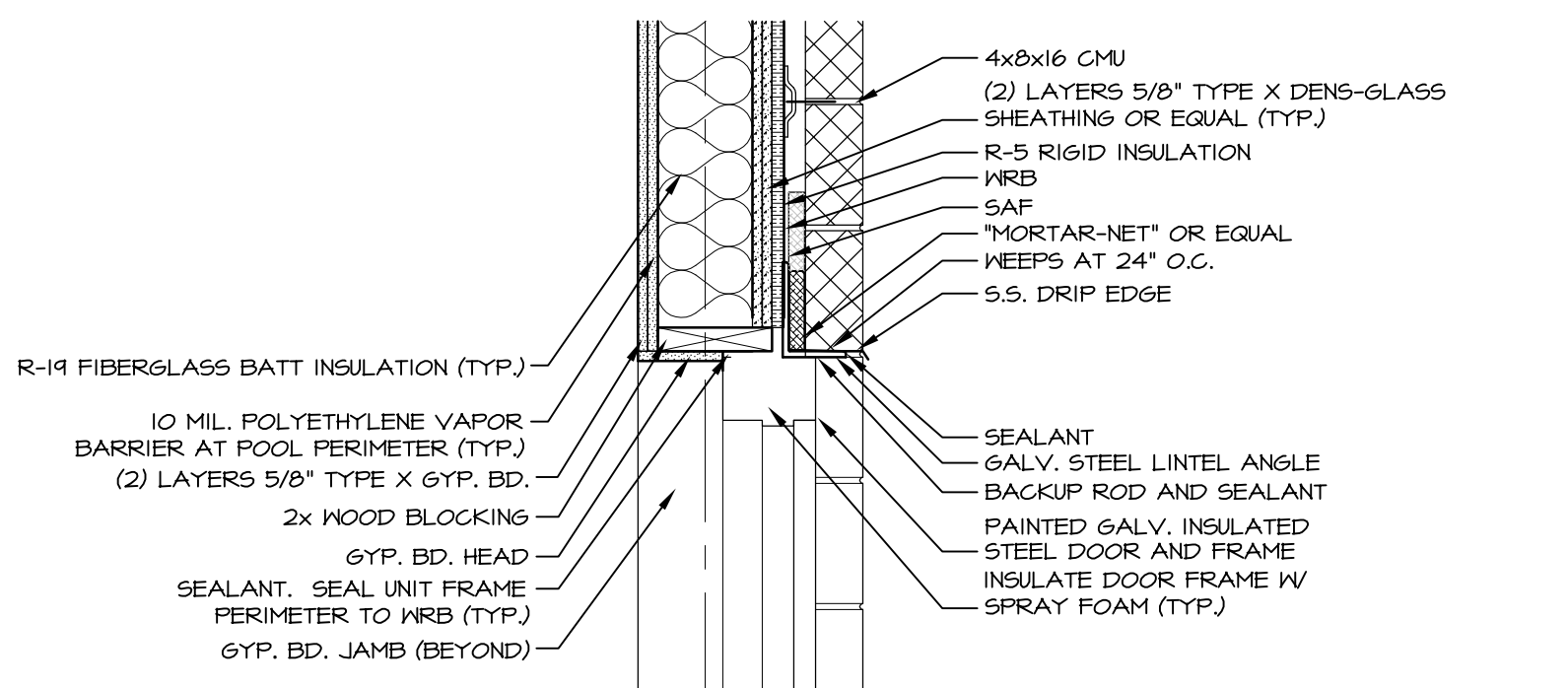
11 ROOF EDGE DETAIL  
A37 1" = 1'-0"



10 WALL BASE DETAIL AT SERVICE AREA  
A37 1" = 1'-0"



9 POOL/SERVICE AREA ROOF DETAIL  
A37 1" = 1'-0"



8 STEEL FRAME DOOR HEAD DETAIL  
A37 1" = 1'-0"

REVISION SCHEDULE	REVISION DESCRIPTION	DATE	BY

**LOPECHED**  
CONSTRUCTION CORPORATION  
11 CORPORATE DRIVE, BELMONT, NH 03220  
PHONE (603) 271-2090 FAX (603) 271-2151

**EXTERIOR WALL SECTION DETAIL**

**Hotel, Restaurant, & Portside Residences**  
Portland ME

DATE: 08-05-10  
SCALE: SEE PLAN  
DRAWN BY: dwb

**A37**  
SHEET

