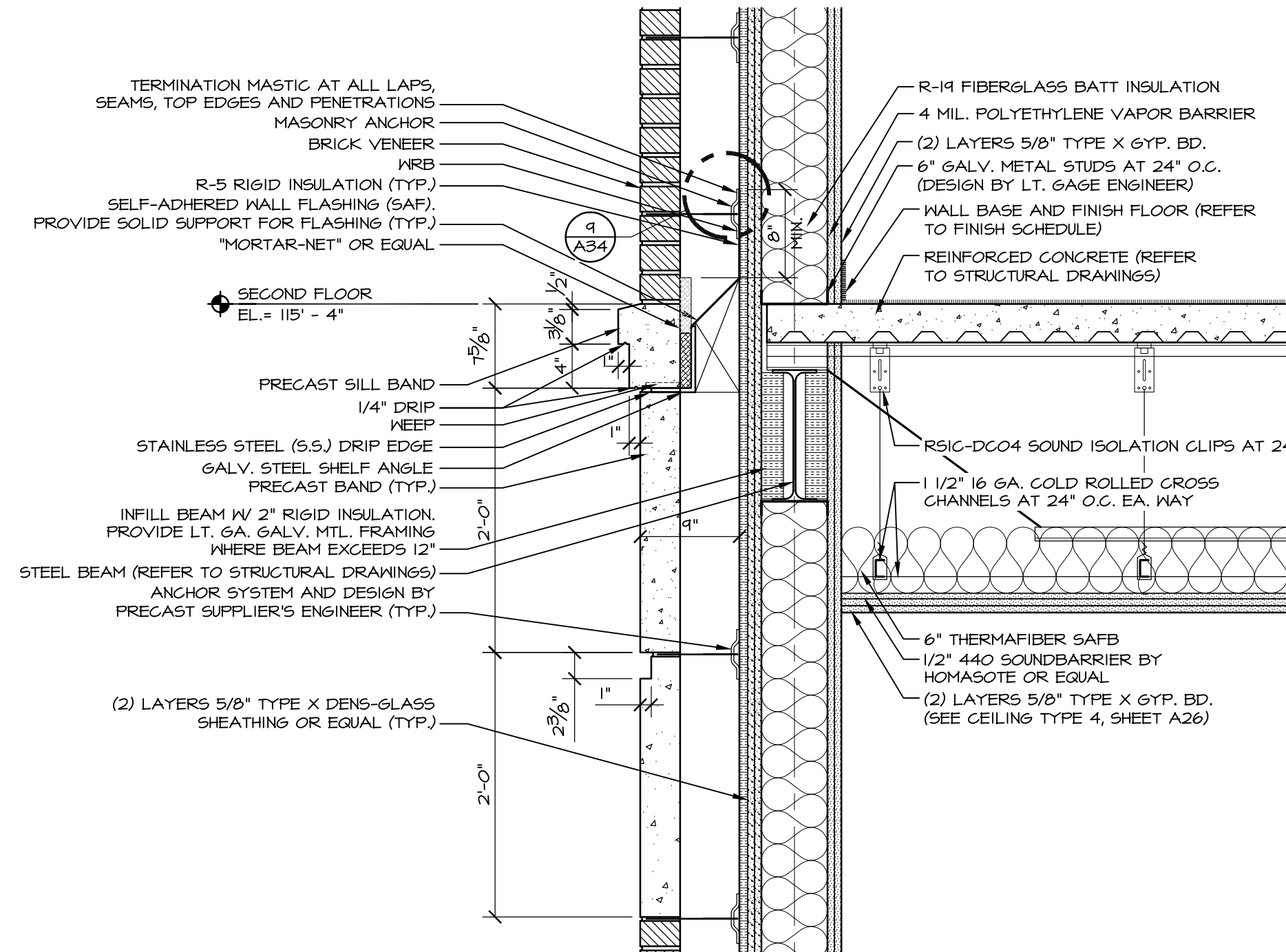
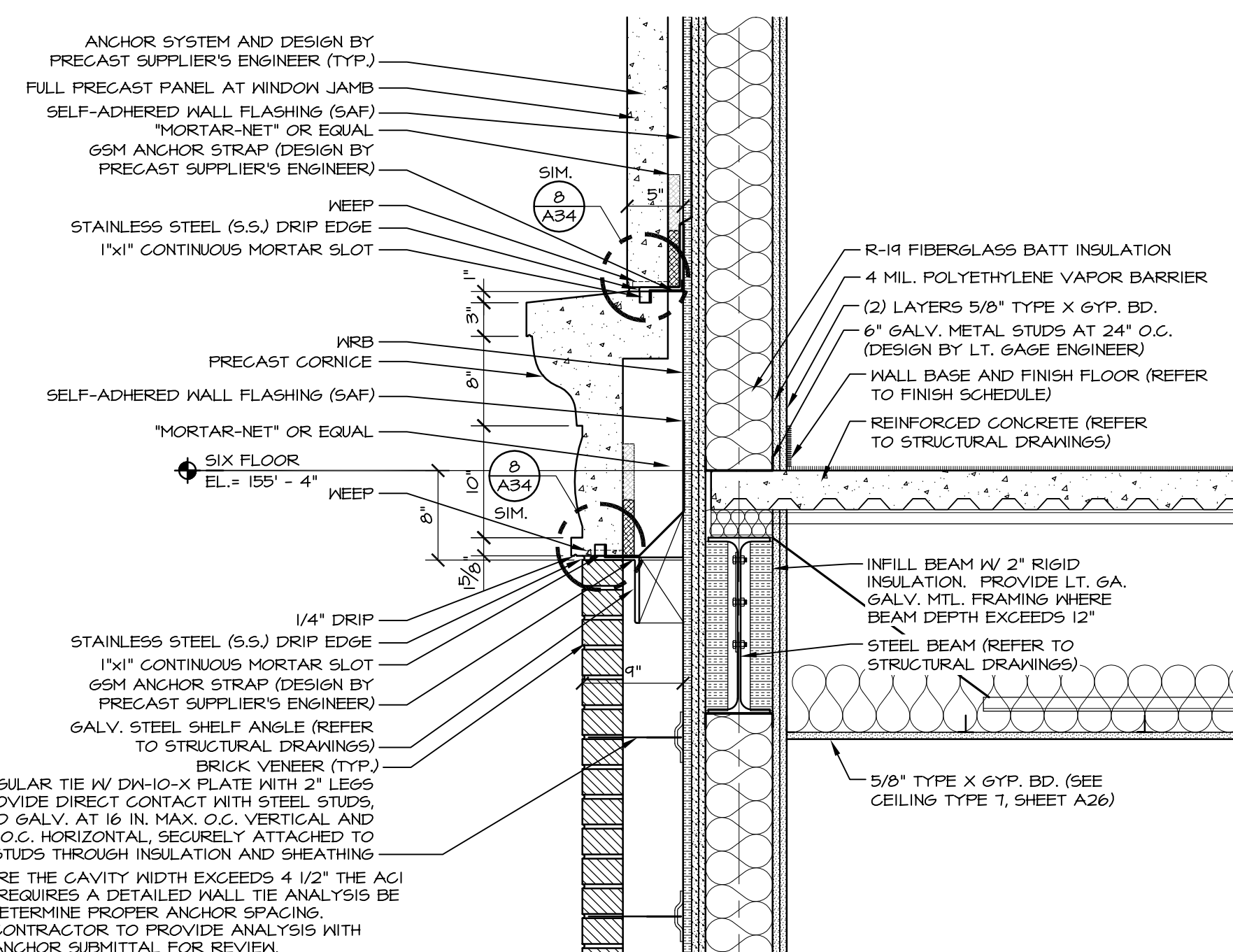


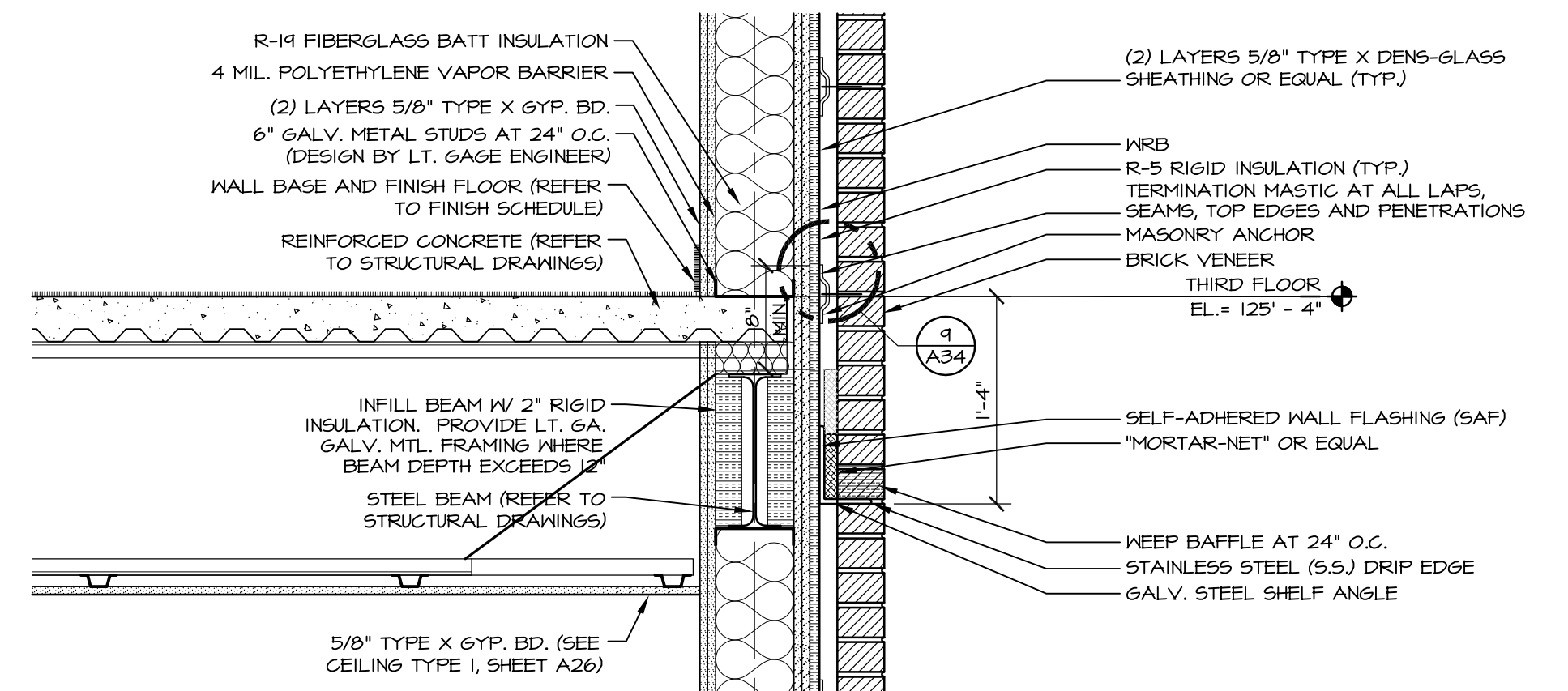
**10** PRECAST PANEL FLASHING DETAIL (TYPICAL)  
A35 1" = 1'-0"



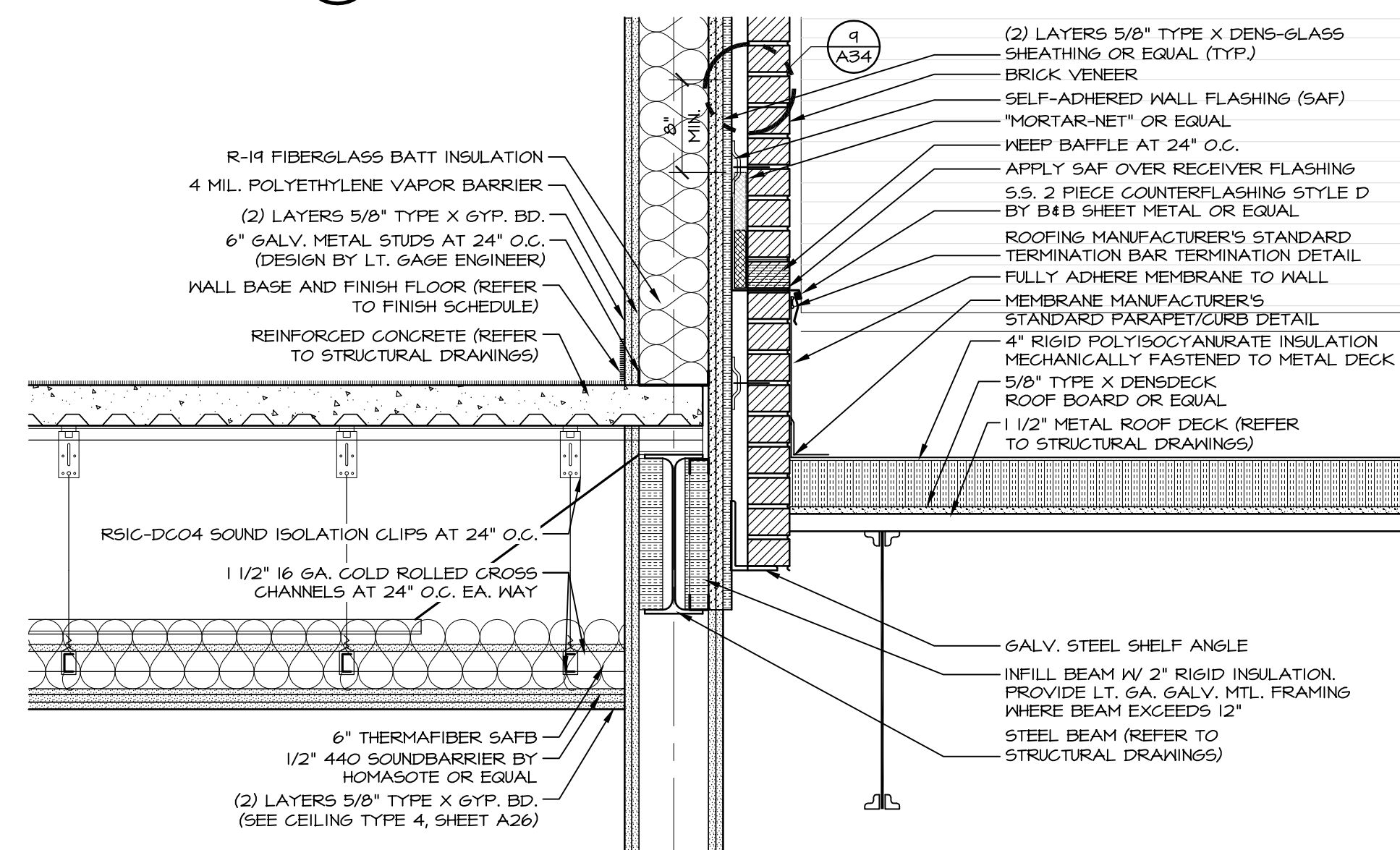
**3** PRECAST STRING COURSE AND BAND DETAIL  
A35 1" = 1'-0"



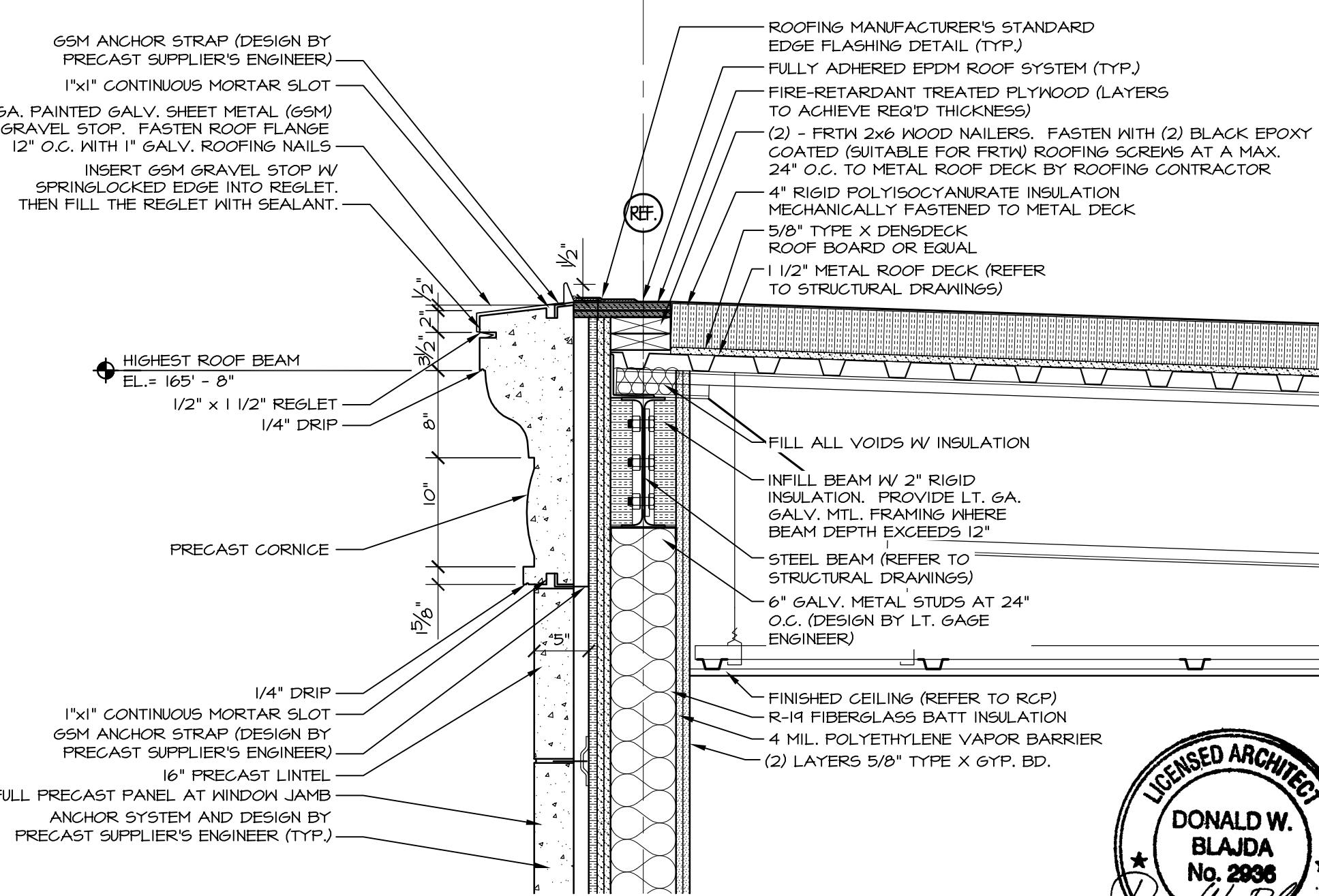
**6** BRICK SHELF ANGLE DETAIL AT 4TH & 5TH FLOORS  
A35 1" = 1'-0"



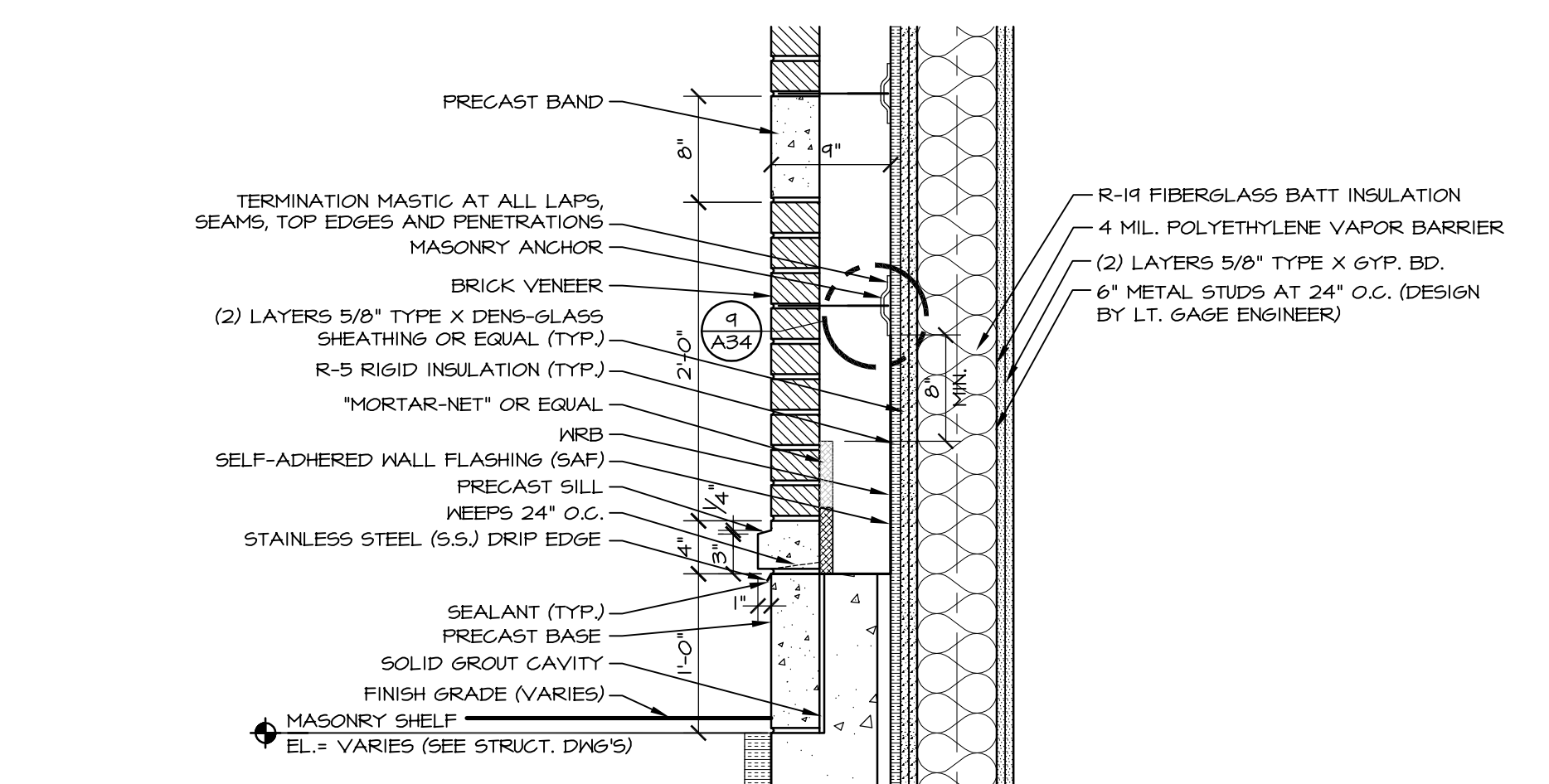
**8** BRICK SHELF DETAIL  
A35 1" = 1'-0"



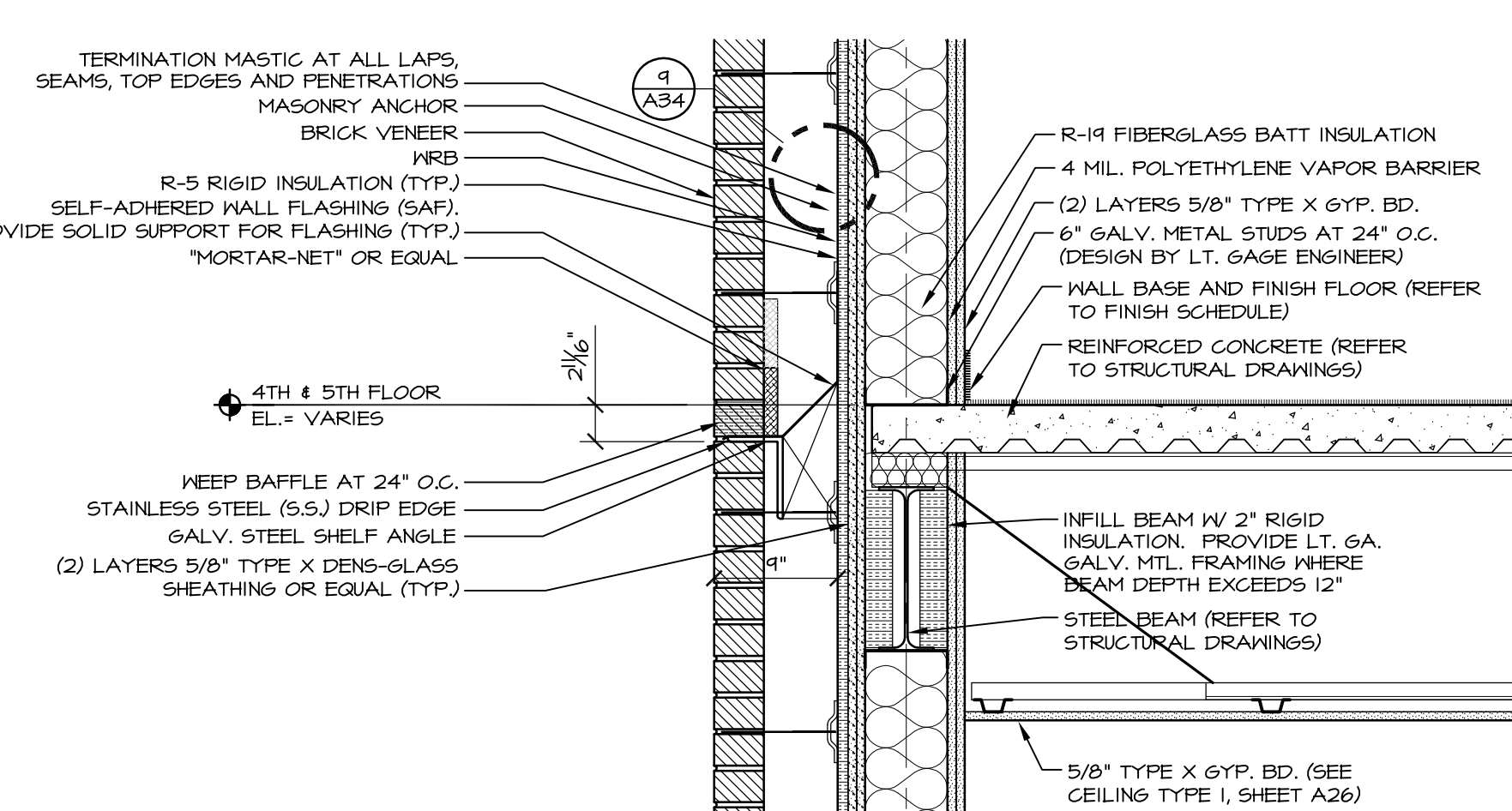
**7** BRICK SHELF DETAIL AT POOL ROOF  
A35 1" = 1'-0"



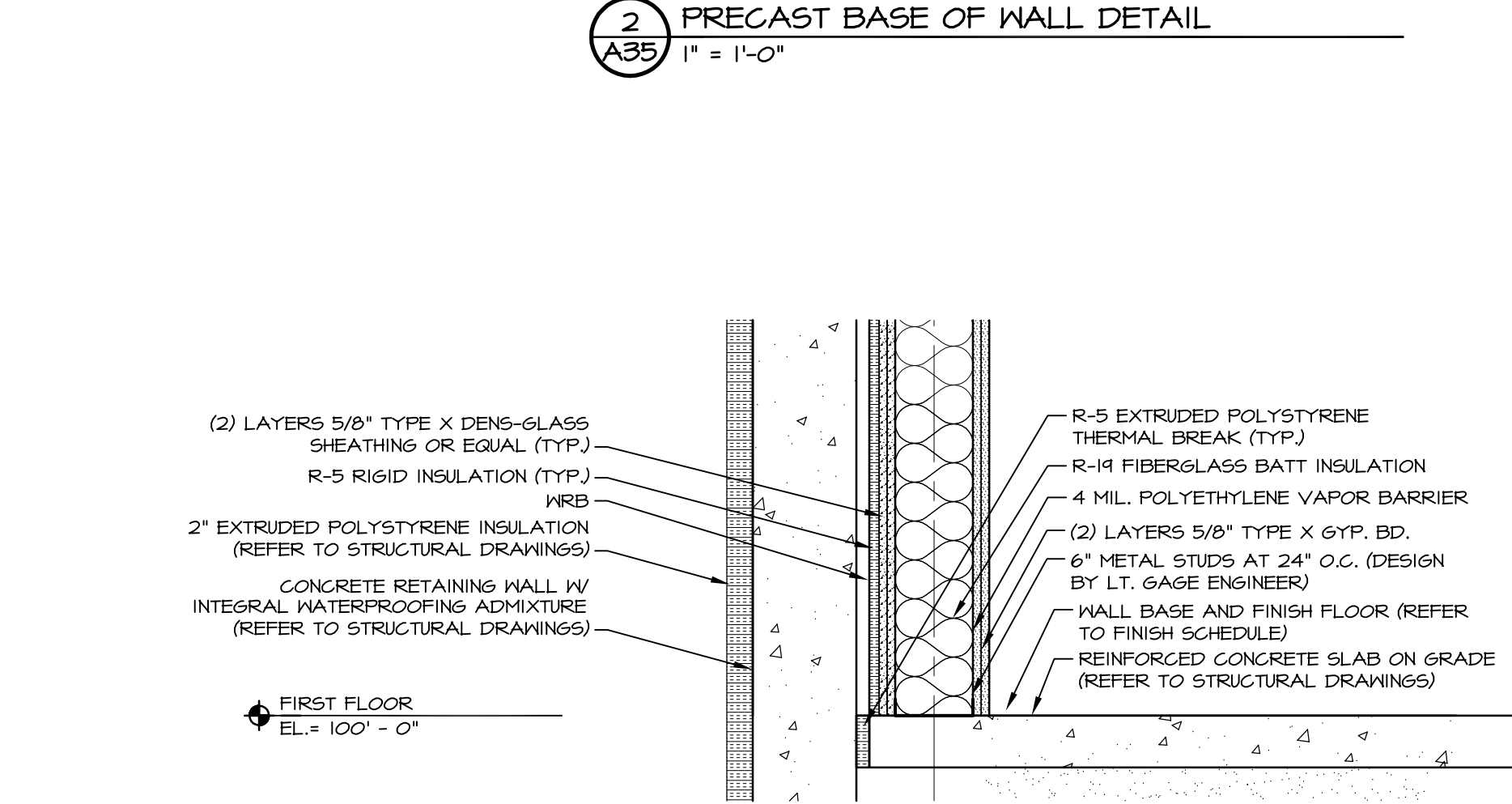
**6** BRICK SHELF ANGLE DETAIL AT 4TH & 5TH FLOORS  
A35 1" = 1'-0"



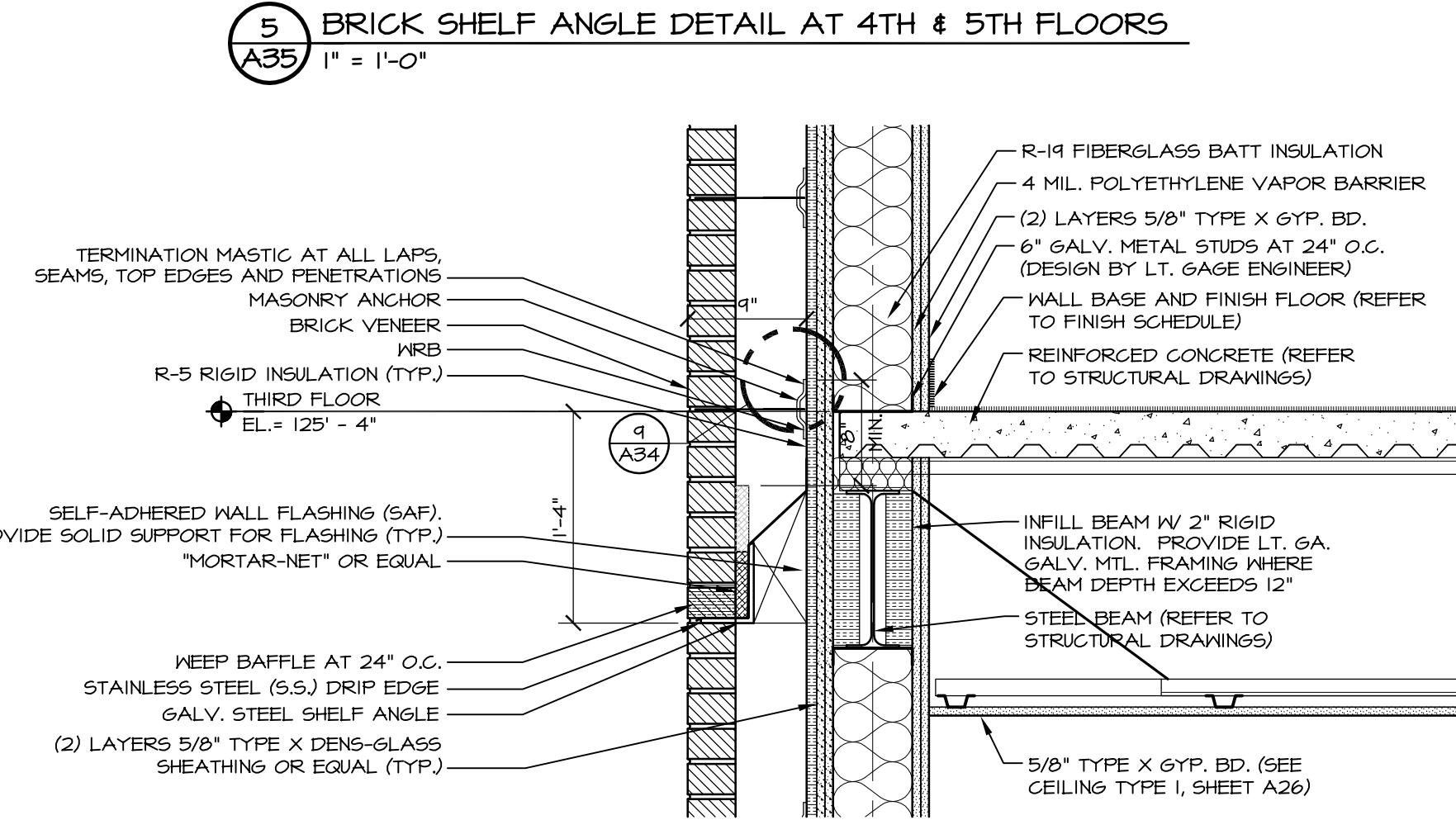
**2** PRECAST BASE OF WALL DETAIL  
A35 1" = 1'-0"



**5** BRICK SHELF ANGLE DETAIL AT 4TH & 5TH FLOORS  
A35 1" = 1'-0"



**1** RETAINING WALL DETAIL  
A35 1" = 1'-0"



**4** BRICK SHELF ANGLE DETAIL AT 3RD FLOOR  
A35 1" = 1'-0"

REVISION SCHEDULE	REVISION DESCRIPTION	DATE	BY

**LOPECHED**  
CONSTRUCTION CORPORATION  
11 CORPORATE DRIVE, BELMONT, NH 03320  
PHONE (603) 271-9090 FAX (603) 271-9191

**EXTERIOR WALL SECTION DETAIL**

Hotel, Restaurant, & Portside Residences  
Portland ME

DATE: 08-05-10  
SCALE: SEE PLAN  
DRAWN BY: dmb  
**A35**  
SHEET:

