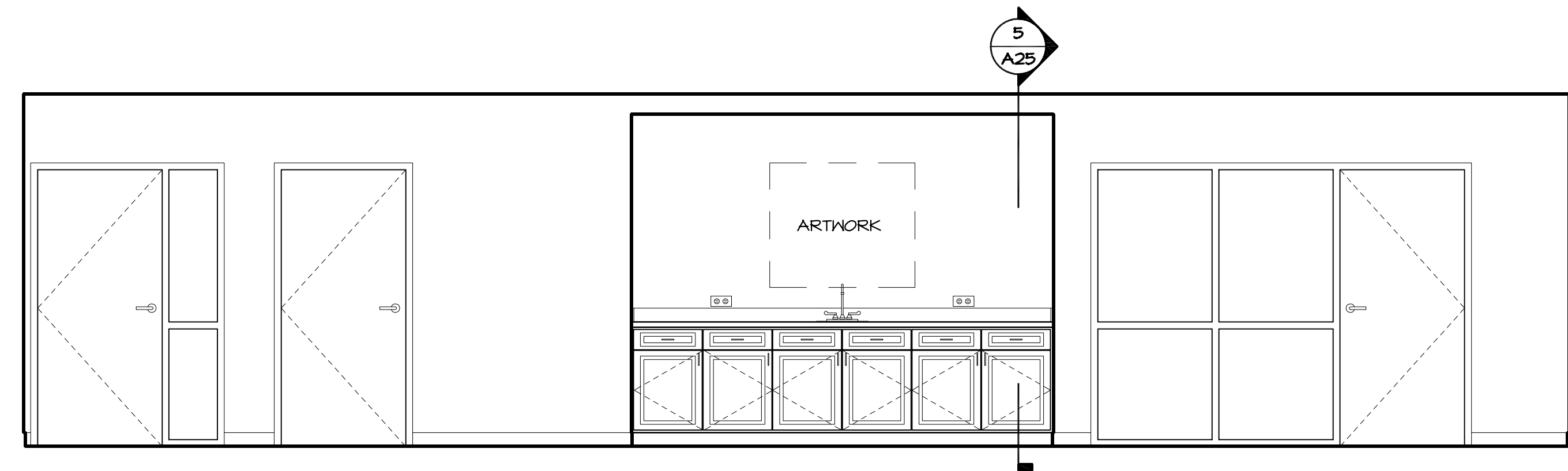


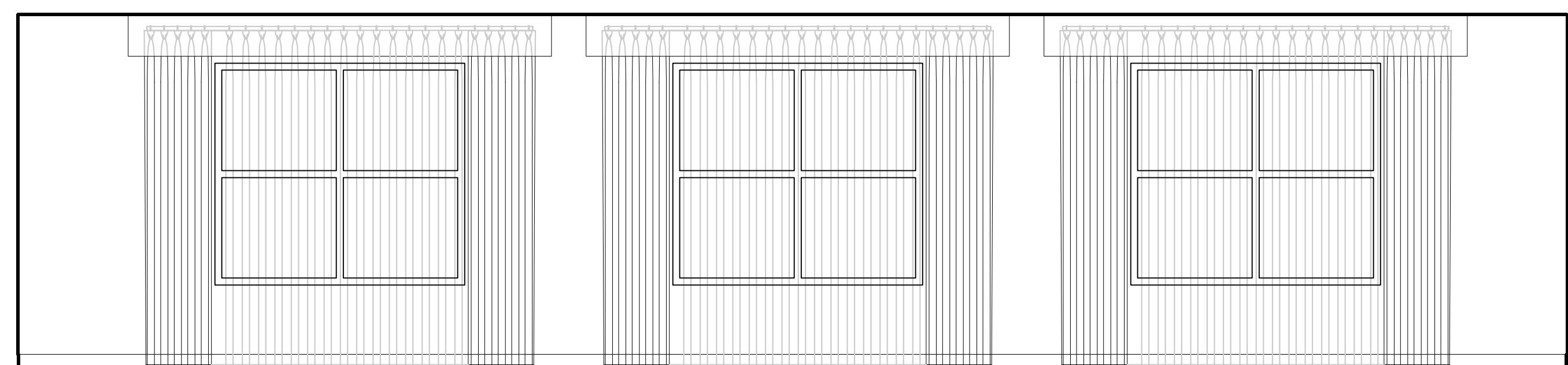
**1 ELEVATION**  
A25 SCALE: 3/8" = 1'-0" MEETING ROOM



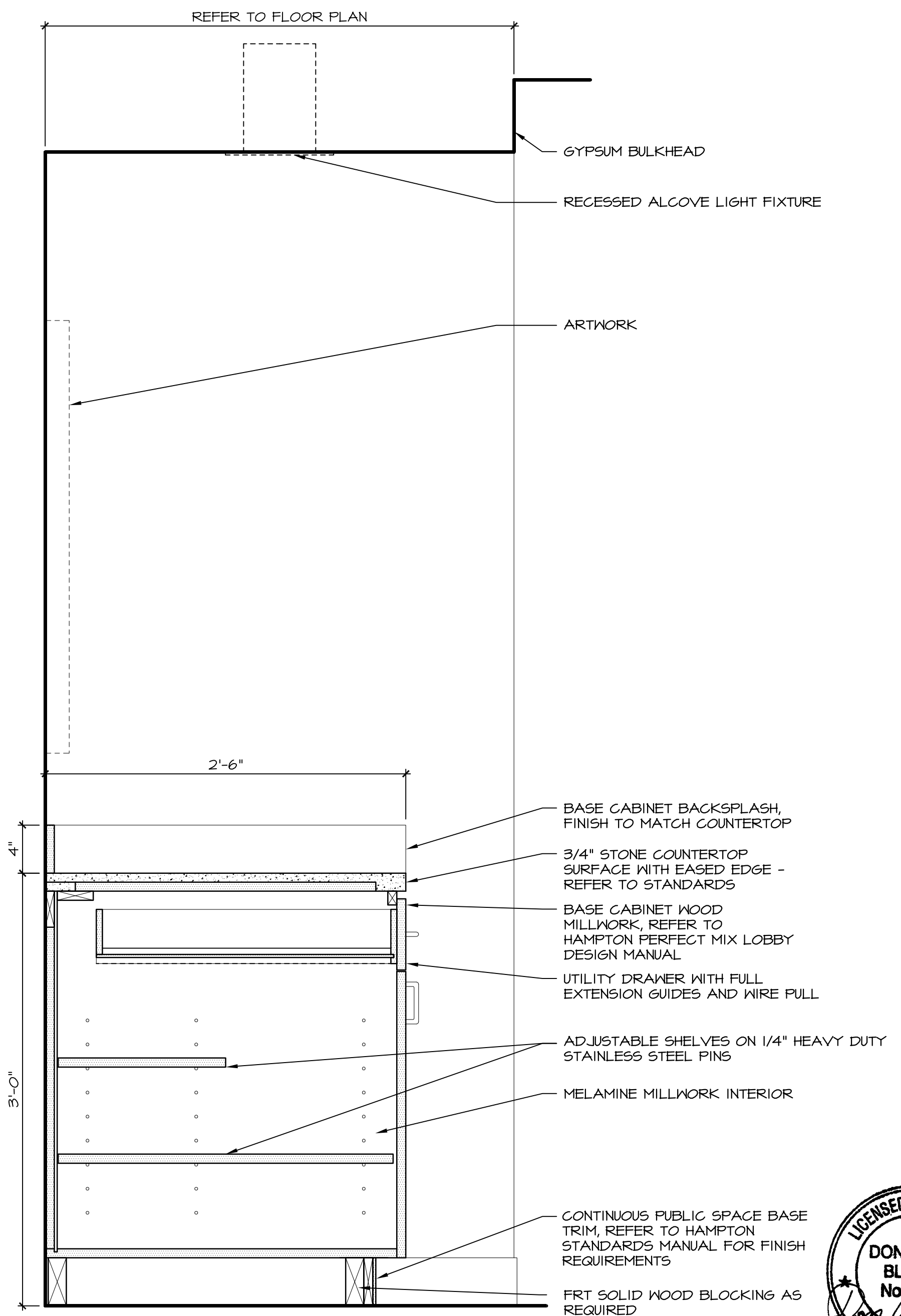
**2 ELEVATION**  
A25 SCALE: 3/8" = 1'-0" MEETING ROOM



**3 ELEVATION**  
A25 SCALE: 3/8" = 1'-0" MEETING ROOM



**4 ELEVATION**  
A25 SCALE: 3/8" = 1'-0" MEETING ROOM



**5 SECTION**  
A25 SCALE: 1/2" = 1'-0" MEETING ROOM MILLWORK DETAIL

REVISION	DATE	DESCRIPTION

**COPECHED**  
CONSTRUCTION CORPORATION  
11 CORPORATE DRIVE, BELMONT, NH 03320  
PHONE: (603) 331-9090 FAX: (603) 331-9191

INTERIOR  
MEETING ROOM  
ELEVATIONS

PROJECT: Hotel, Restaurant, & Portside Residences  
Portland ME

DATE: 06-22-10  
SCALE: As Shown  
DRAWN BY: dwb  
A25 SHEET

