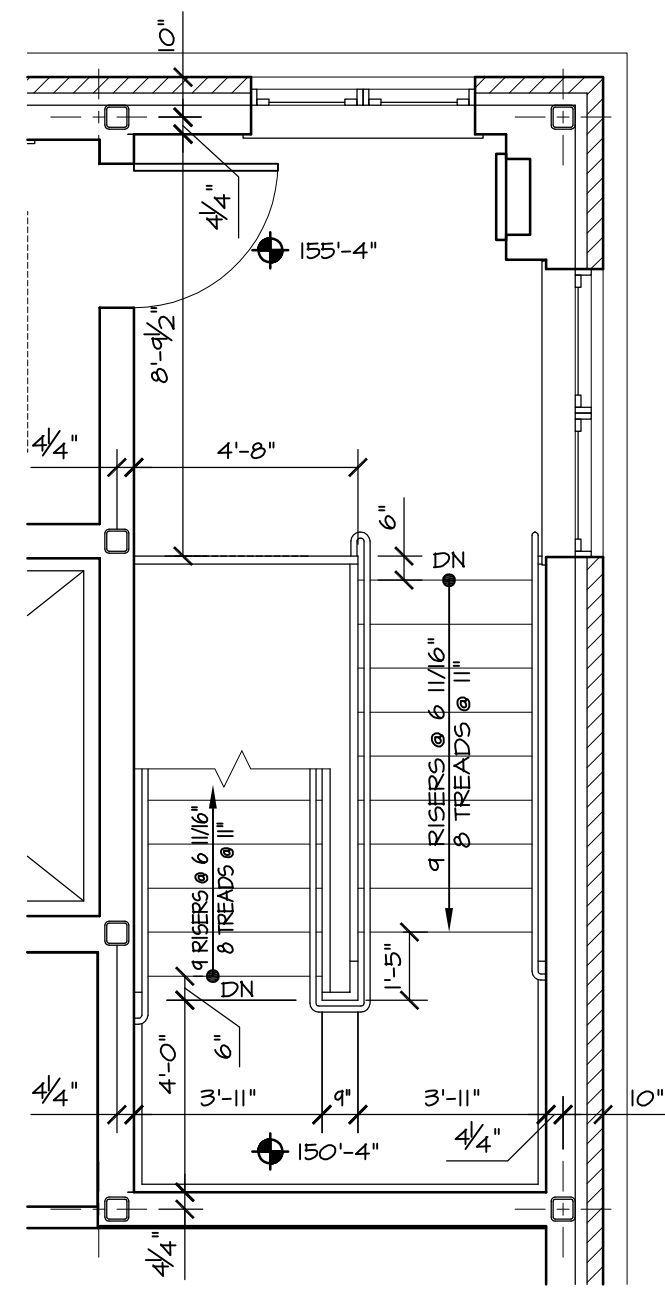
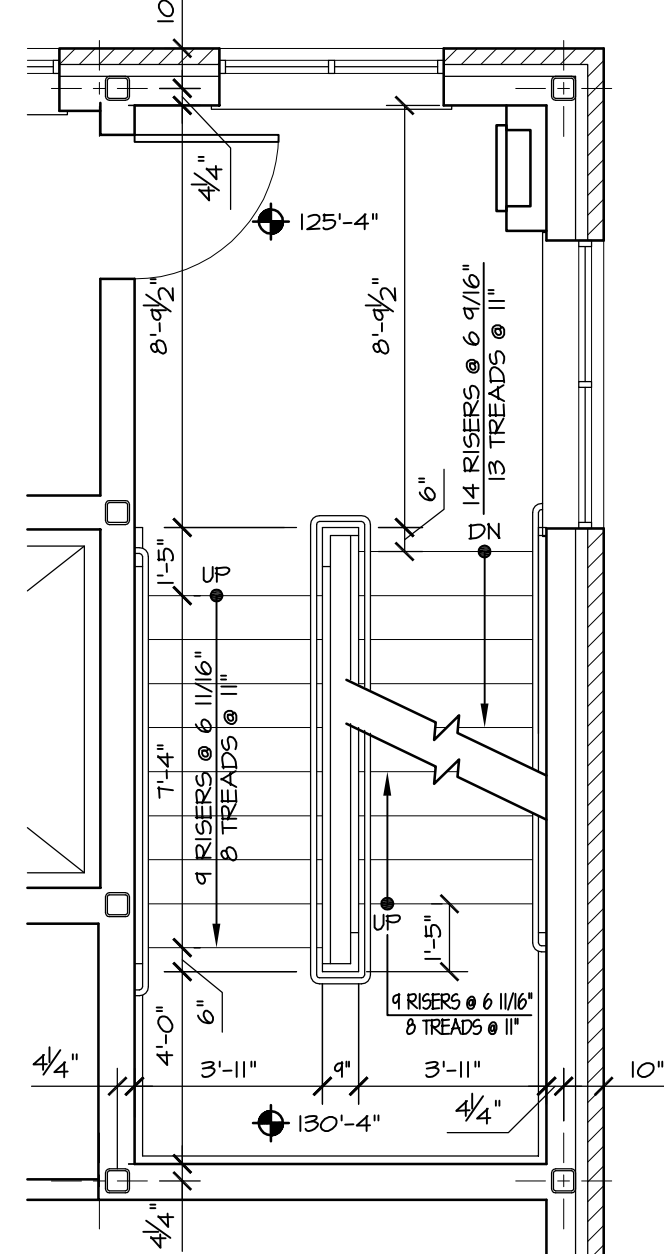


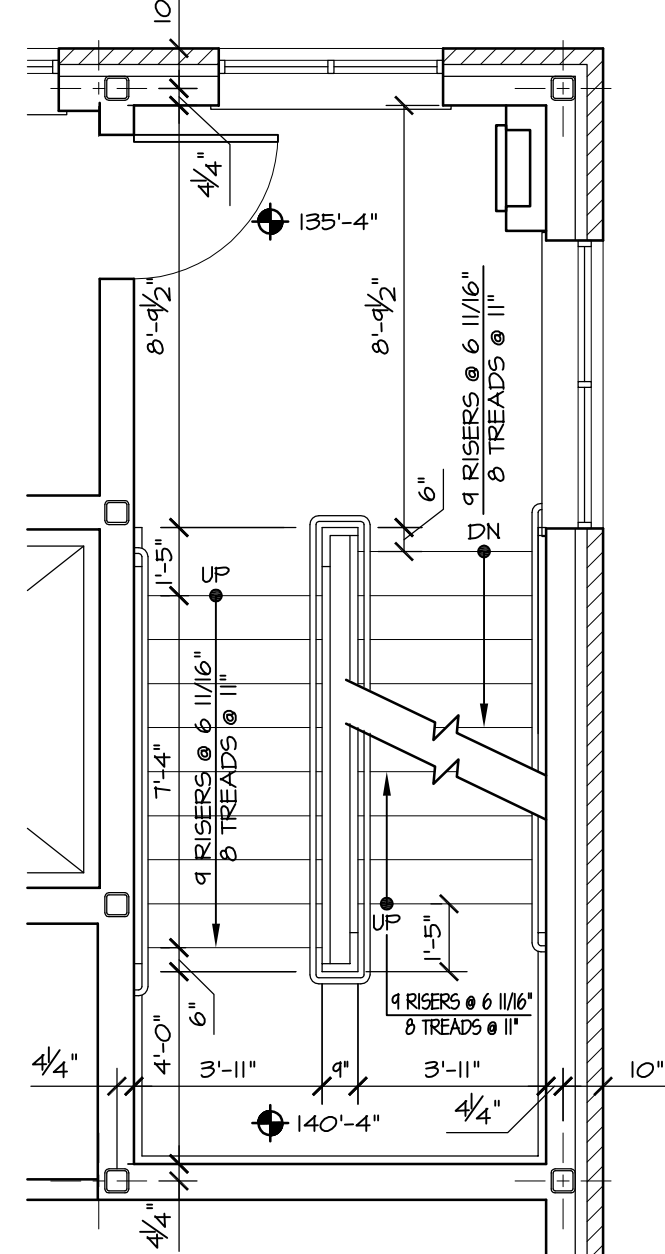
6 FIFTH FLOOR STAIR I PLAN
1/4" = 1'-0"



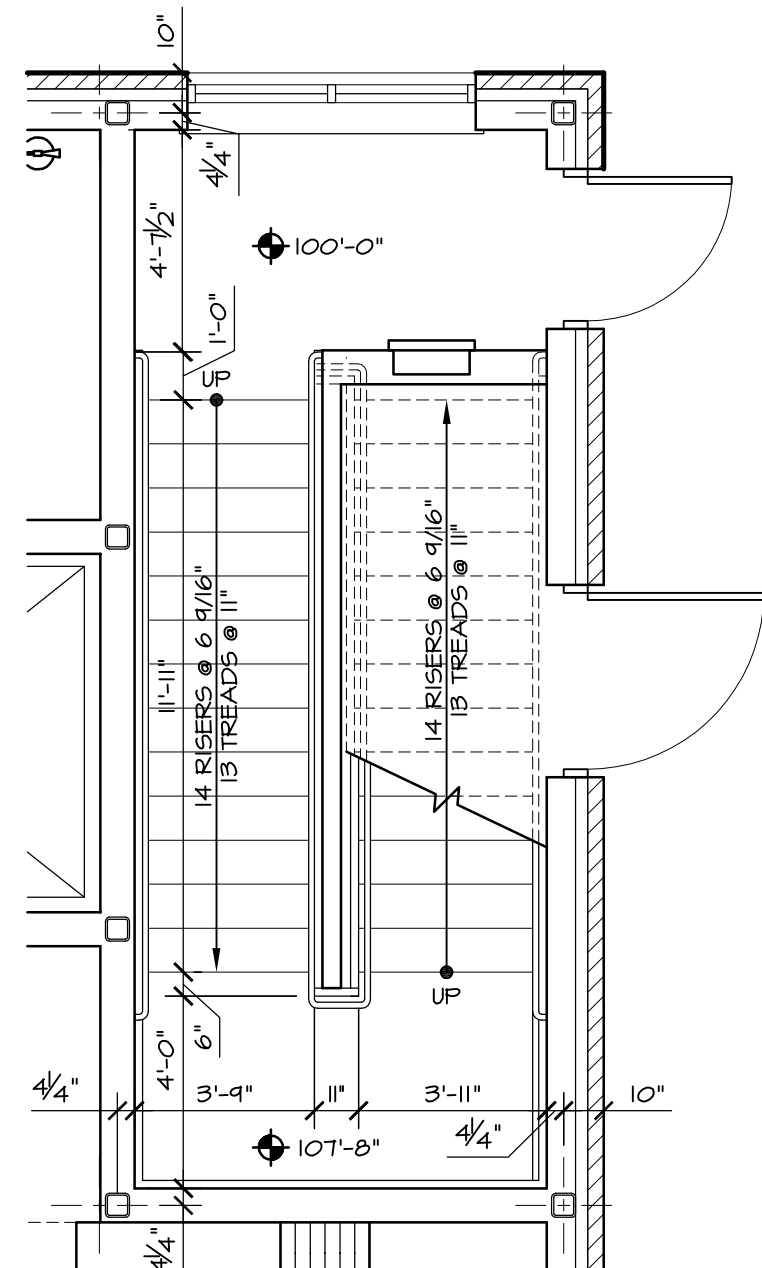
7 SIXTH FLOOR STAIR I PLAN
1/4" = 1'-0"



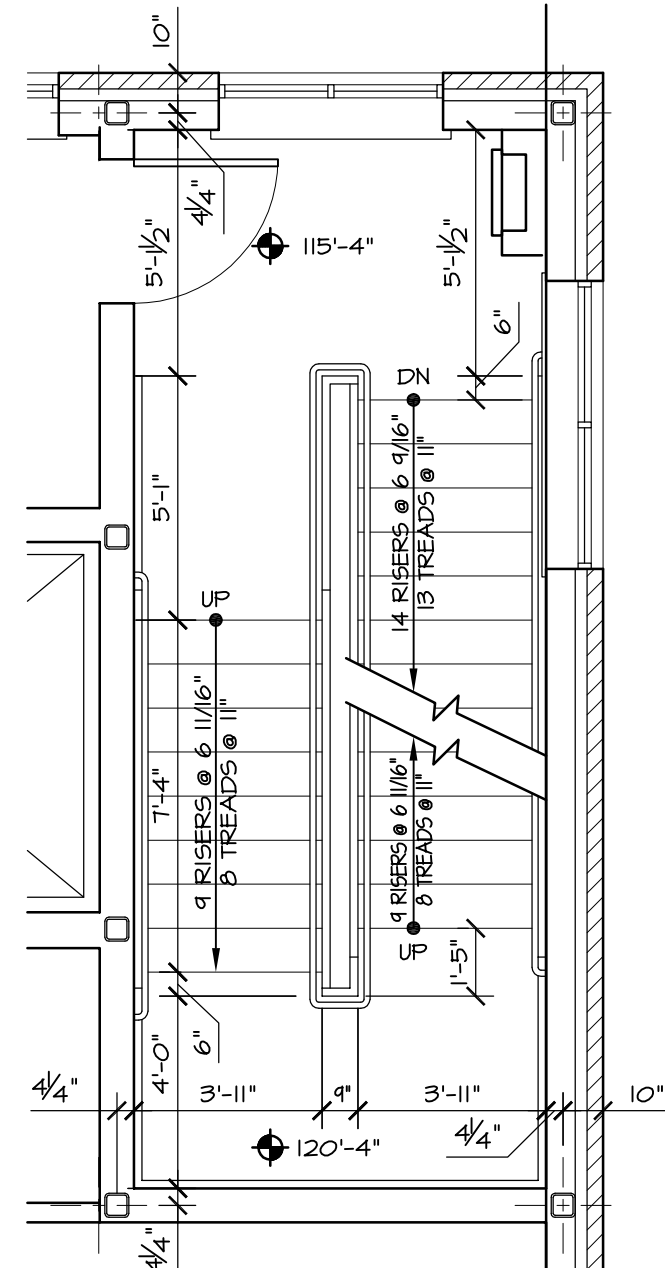
4 THIRD FLOOR STAIR I PLAN
1/4" = 1'-0"



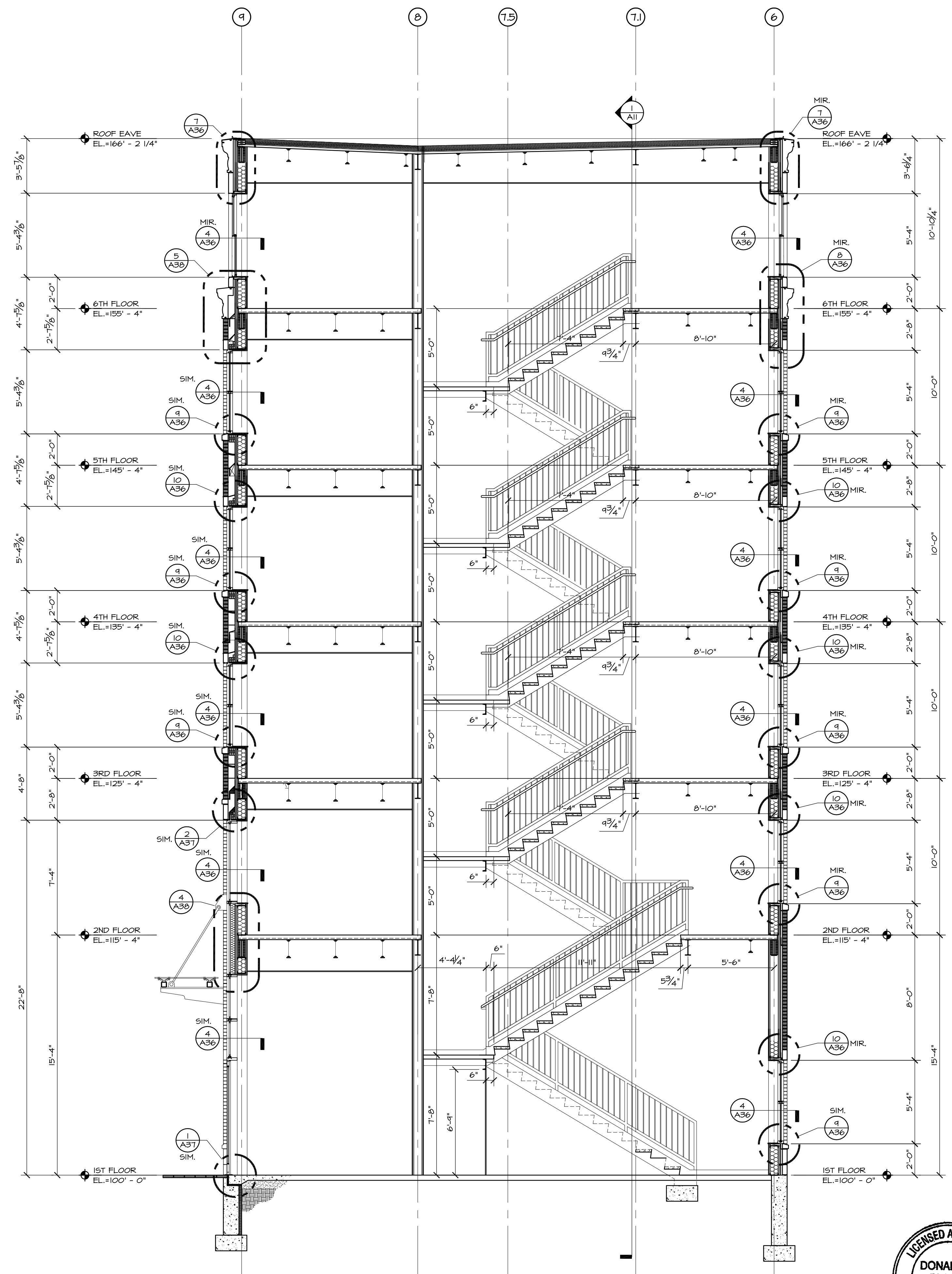
5 FOURTH FLOOR STAIR I PLAN
1/4" = 1'-0"



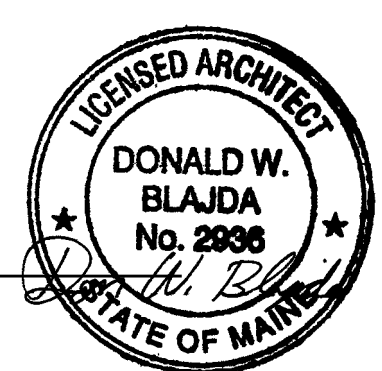
2 FIRST FLOOR STAIR I PLAN
1/4" = 1'-0"



3 SECOND FLOOR STAIR I PLAN
1/4" = 1'-0"



1 STAIR I SECTION
1/4" = 1'-0"



DATE	REVISION SCHEDULE
07-06-10	RELOCATE ROOF ACCESS TO UTILITY ROOM
07-21-10	REVISE ELEVATOR SIZE
08-06-10	REVISE FOR PRECAST CONCRETE

LOPECHED
CONSTRUCTION CORPORATION
11 CORPORATE DRIVE, BELMONT, NH 03220
PHONE: (603) 271-7090 FAX: (603) 271-7151

STAIR 1 SECTIONS

PROJECT: Hotel, Restaurant, & Portside Residences
Portland ME

DATE: 05-25-10
SCALE: SEE PLAN
DRAWN BY: dwb

A10
SHEET