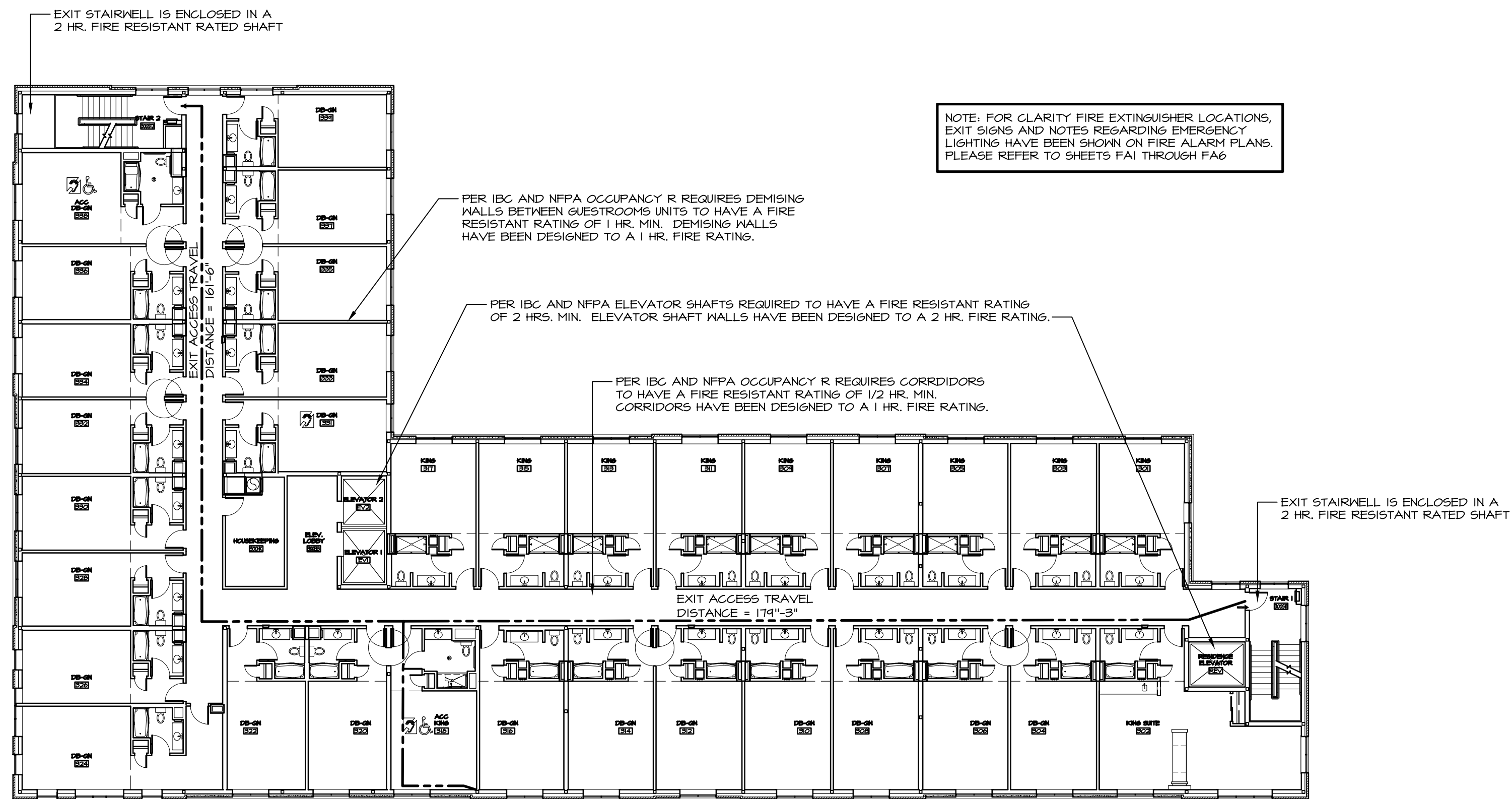


2 6TH FLOOR PLAN
A02 1/16" = 1'-0"



1 3RD FLOOR PLAN (4TH AND 5TH FLOOR SIMILAR)
A02 1/16" = 1'-0"

DATE	REVISION SCHEDULE	REVISION DESCRIPTION	BY

COPECHED
CONSTRUCTION CORPORATION
11 CORPORATE DRIVE, BELMONT, NH 03220
PHONE: (603) 327-9090 FAX: (603) 327-9191

CODE
INFORMATION
LIFE SAFETY PLAN

PROJECT: Hotel, Restaurant, & Portside Residences
Portland ME

DATE: 08-25-10
SCALE: SEE PLAN
DRAWN BY: dwb

A0.2
SHEET:

