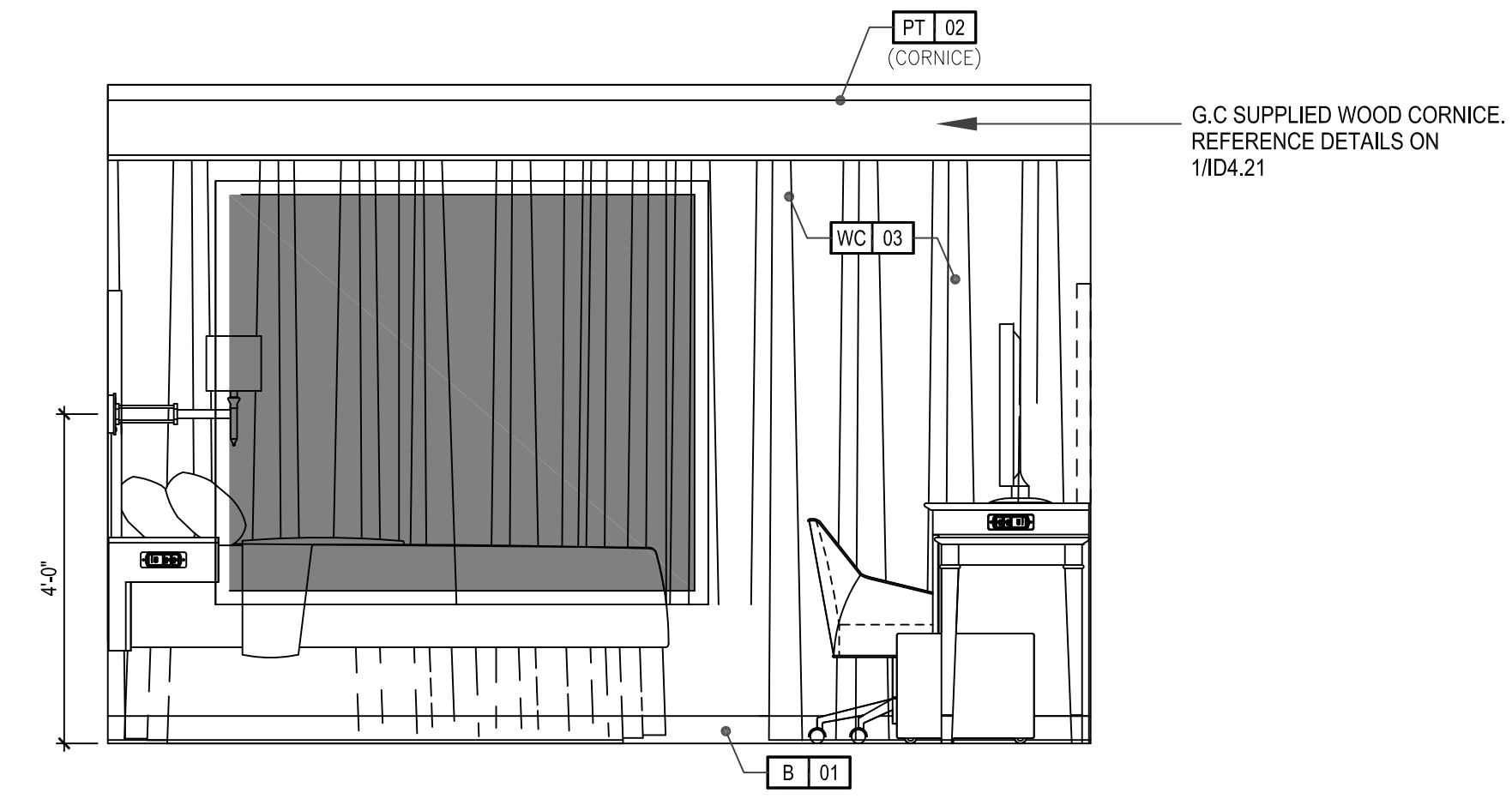


1 GUESTROOM ELEVATION - DESK

ID4.11 SCALE: 1/2" = 1'-0"

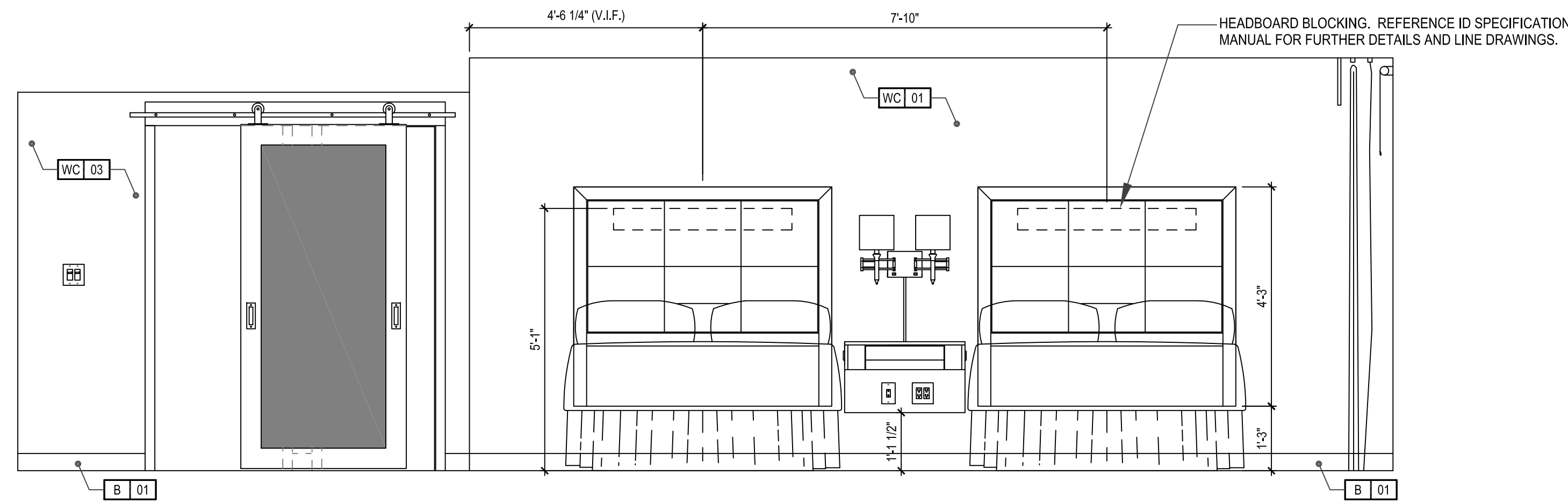
FOREVER YOUNG SCHEME



2 GUESTROOM ELEVATION - WINDOW WALL

ID4.11 SCALE: 1/2" = 1'-0"

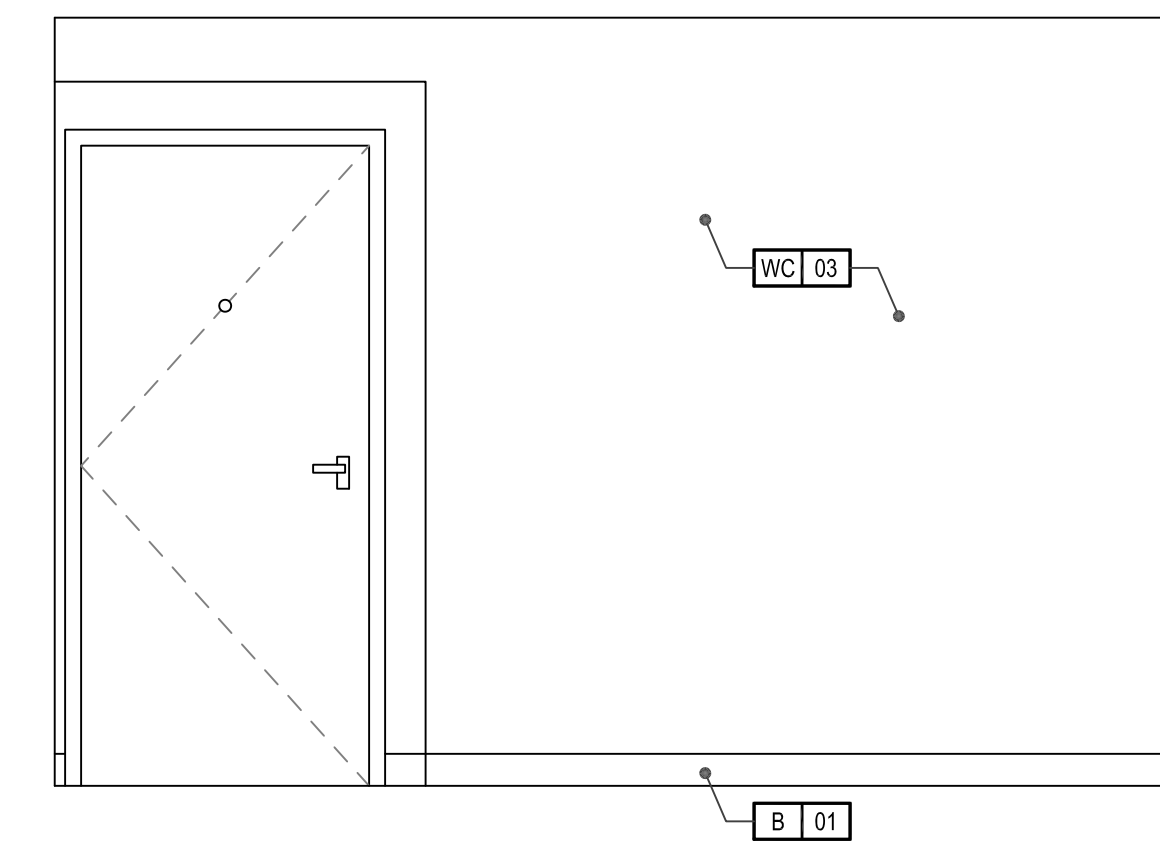
FOREVER YOUNG SCHEME



3 GUESTROOM ELEVATION - BEDWALL

ID4.11 SCALE: 1/2" = 1'-0"

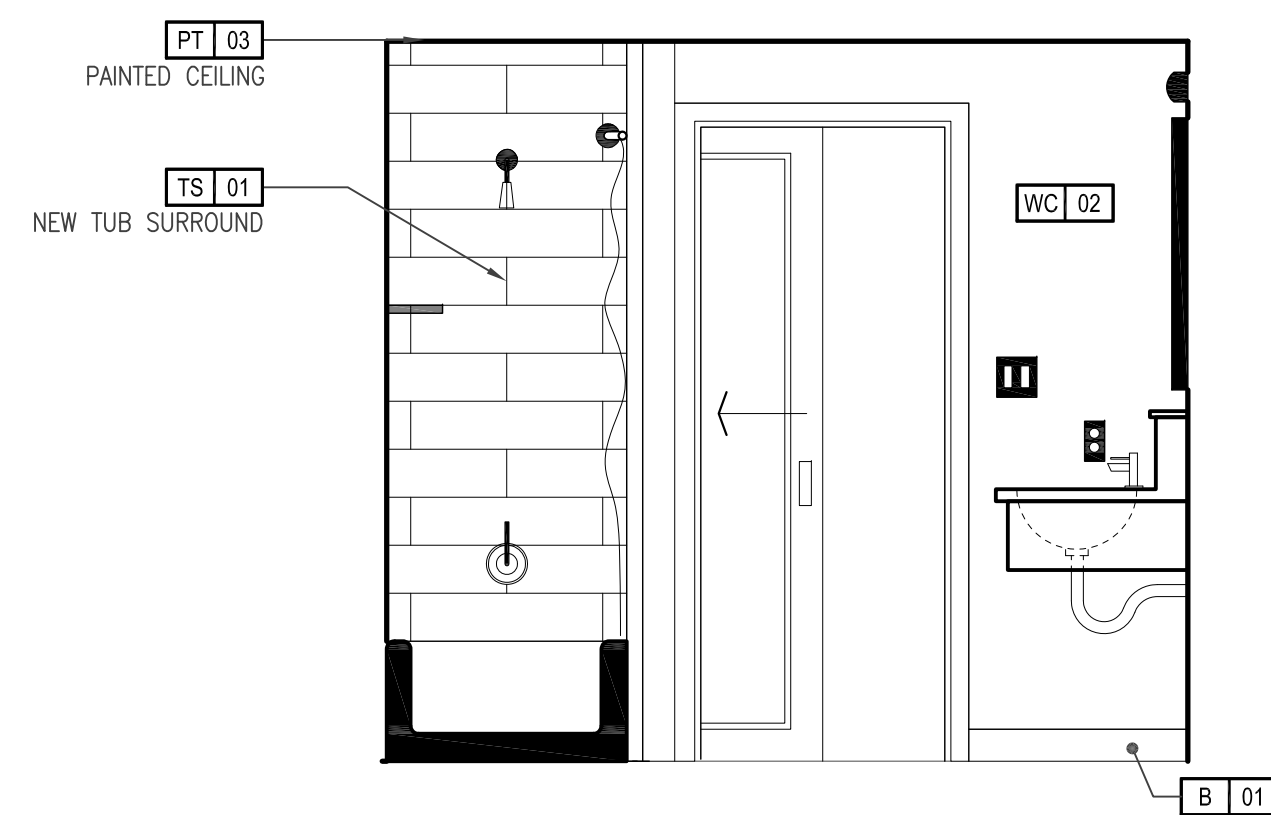
FOREVER YOUNG SCHEME



4 GUESTROOM ELEVATION - BATH WALL

ID4.11 SCALE: 1/2" = 1'-0"

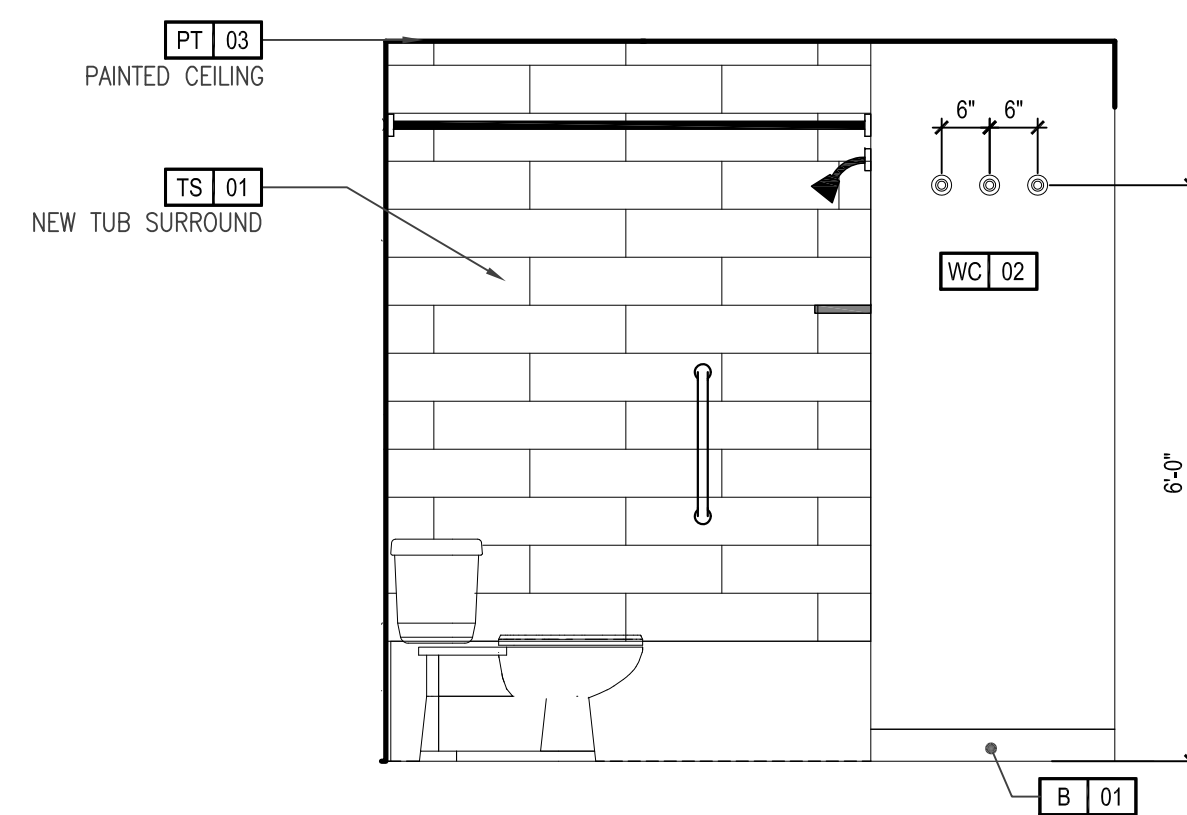
FOREVER YOUNG SCHEME



5 GUEST BATH ELEVATION

ID4.11 SCALE: 1/2" = 1'-0"

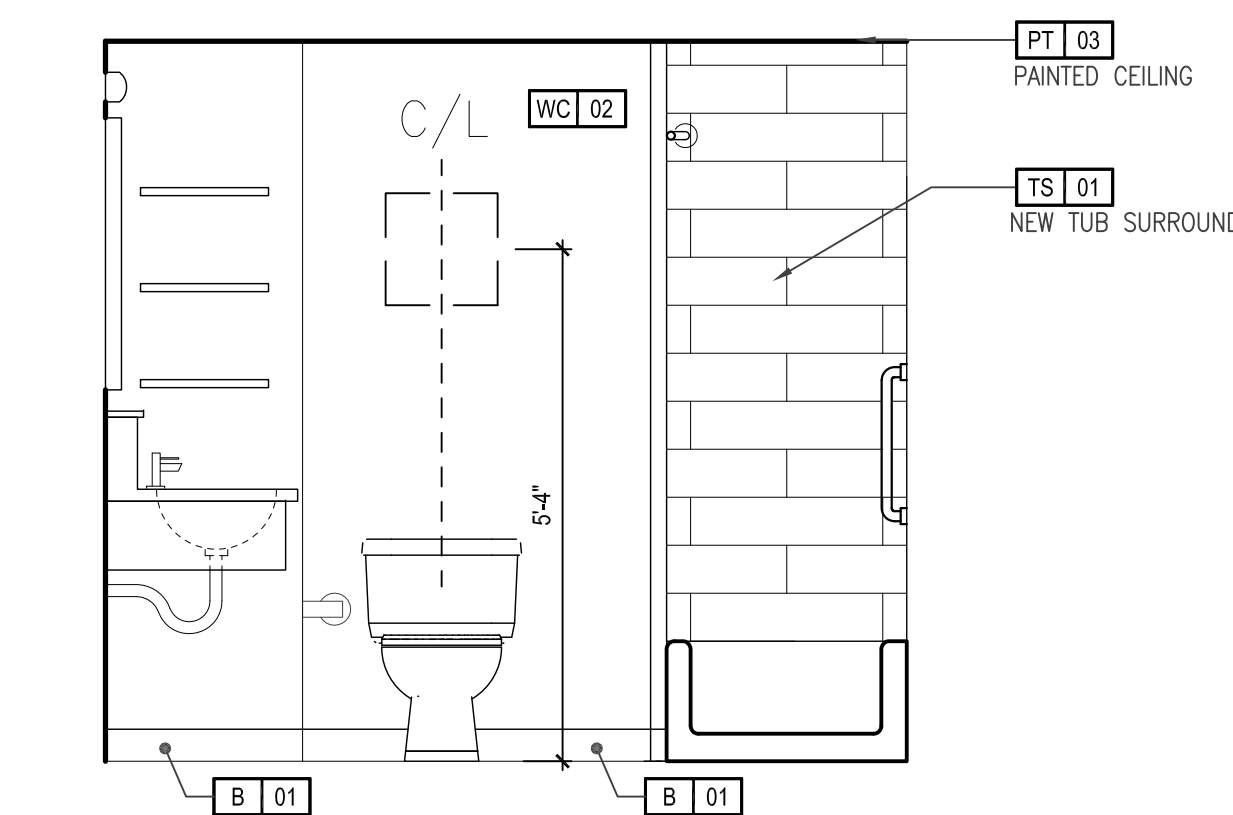
FOREVER YOUNG SCHEME



6 GUEST BATH ELEVATION

ID4.11 SCALE: 1/2" = 1'-0"

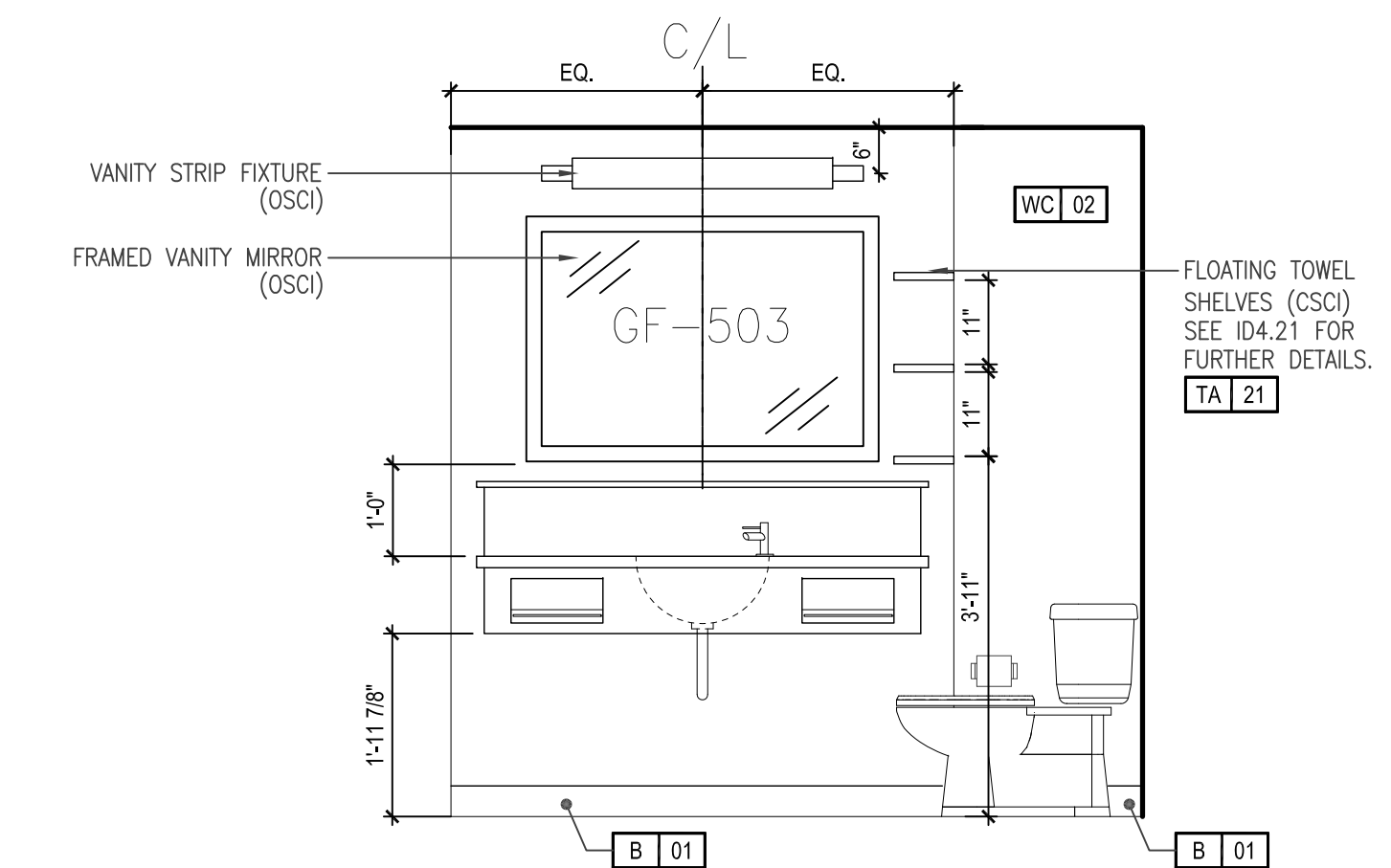
FOREVER YOUNG SCHEME



6 GUEST BATH ELEVATION

ID4.11 SCALE: 1/2" = 1'-0"

FOREVER YOUNG SCHEME



6 GUEST BATH ELEVATION

ID4.11 SCALE: 1/2" = 1'-0"

FOREVER YOUNG SCHEME

GUESTROOM: ELEVATIONS

FILE NAME: HAMPTON INN: PORTLAND DOWNTOWN - WATERFRONT
OWNER: REVISION DATE:
DECOR: "FOREVER YOUNG" SCHEME

NOT FOR CONSTRUCTION
THIS PACKAGE IS REPRESENTATIVE OF DESIGN CRITERIA AND IS NOT FOR CONSTRUCTION. THE OWNER/FRANCHISEE'S CONSULTING ARCHITECT AND ENGINEERS SHALL BE RESPONSIBLE FOR VERIFYING AND COMPLYING WITH ALL APPLICABLE LAWS (I.E. ADA), CODES, ORDINANCES, RULES, REGULATIONS AND OTHER LEGAL REQUIREMENTS OF ADMINISTRATIVE AUTHORITIES HAVING JURISDICTION.

QUEEN QUEEN
GUESTROOM
ELEVATIONS

ID4.11