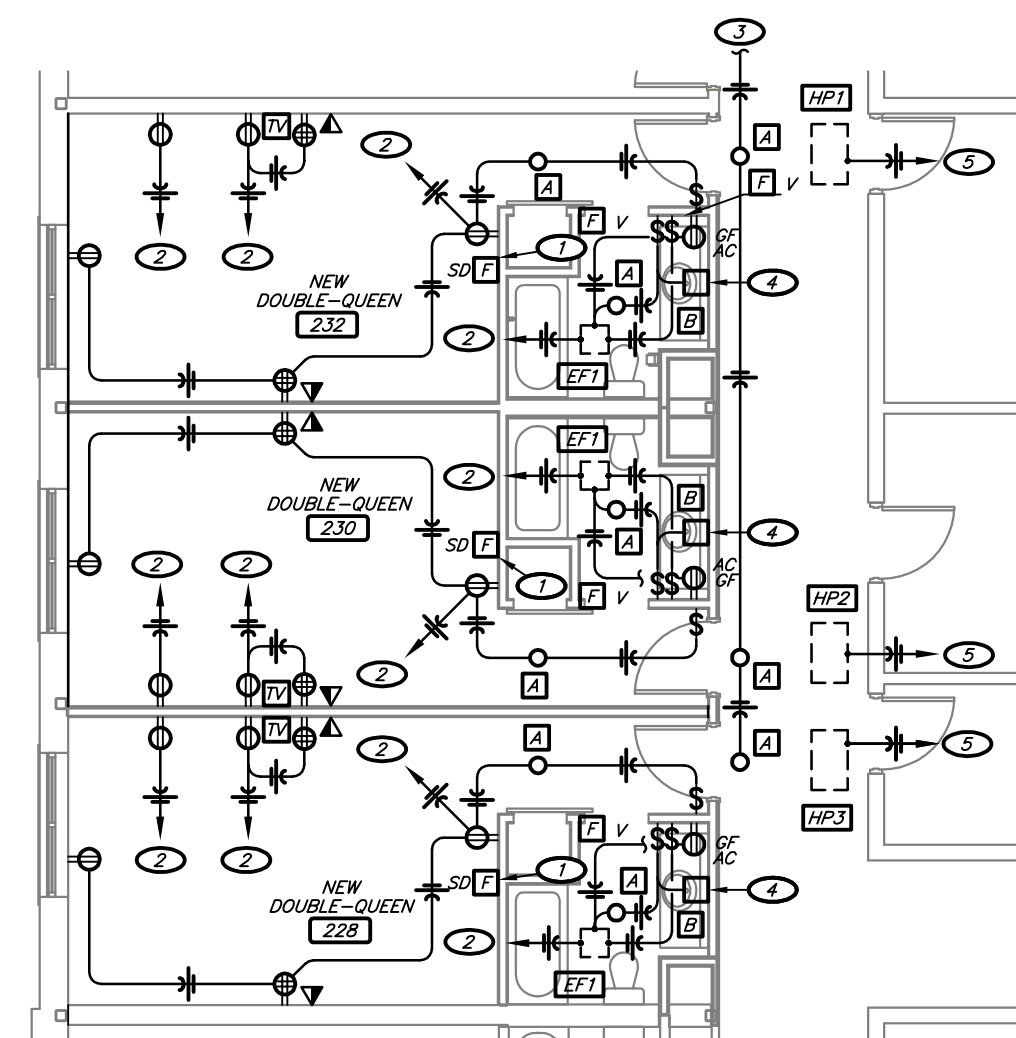


## ELECTRICAL SYMBOLS:

	EXIT LIGHT, WALL MOUNTED / CEILING MOUNTED
	FLUORESCENT LIGHT FIXTURE
	RECESSED CAN LIGHT FIXTURE
	WALL-MOUNT LIGHT FIXTURE
	20AMP, SINGLE POLE, 120/277V SWITCH
	20AMP, THREE-WAY, 120/277V SWITCH
	SIMPLEX RECEPTACLE, 2P, 3W, 20A, 125V
	DUPLEX RECEPTACLE, 2P, 3W, 20A, 125V
	DUPLEX RECEPTACLE, MOUNTED @ 42" ABOVE FINISHED FLOOR
	DUPLEX RECEPTACLE, INSTALLED FLUSH WITH CEILING
	DUPLEX RECEPTACLE, MOUNTED 6" ABOVE COUNTER TOP BACKSPASH
	DUPLEX RECEPTACLE W/ GROUND FAULT INTERRUPTER
	DUPLEX RECEPTACLE FOR TV, COORDINATE MOUNTING HEIGHT WITH ARCHITECT AND TV SUPPLIER/INSTALLER
	DUPLEX RECEPTACLE, SWITCHED
	DUPLEX RECEPTACLE, WEATHERPROOF WHALE-IN-USE
	DOUBLE DUPLEX RECEPTACLE WITH COMMON FACEPLATE
	RECEPTACLE MOUNTED IN FLUSH FLOOR BOX, REFER TO SPECIFICATIONS
	JUNCTION BOX - CEILING MOUNTED
	JUNCTION BOX - WALL MOUNTED
	LPT LIGHTING & POWER PANELBOARD
	MEP ELECTRICAL EQUIPMENT, REFER TO SCHEDULE FOR TAGGED EQUIPMENT
	DS1 DISCONNECT SWITCH
	CONDUIT CONCEALED IN CEILING OR WALL
	CONDUIT CONCEALED IN FLOOR SLAB
	#12 CONDUCTORS, TICK MARKS INDICATE QUANTITY
	P1-1 HOME RUN WITH PANEL AND CIRCUIT DESIGNATION
	P1-2 PARTIAL HOME RUN WITH PANEL AND CIRCUIT DESIGNATION
	GROUND WIRE
	FEEDER PER SCHEDULE
	TELECOMMUNICATIONS OUTLET
	CABLE TELEVISION OR MATV OUTLET, COORDINATE MOUNTING HEIGHT WITH ARCHITECT AND TV SUPPLIER/INSTALLER

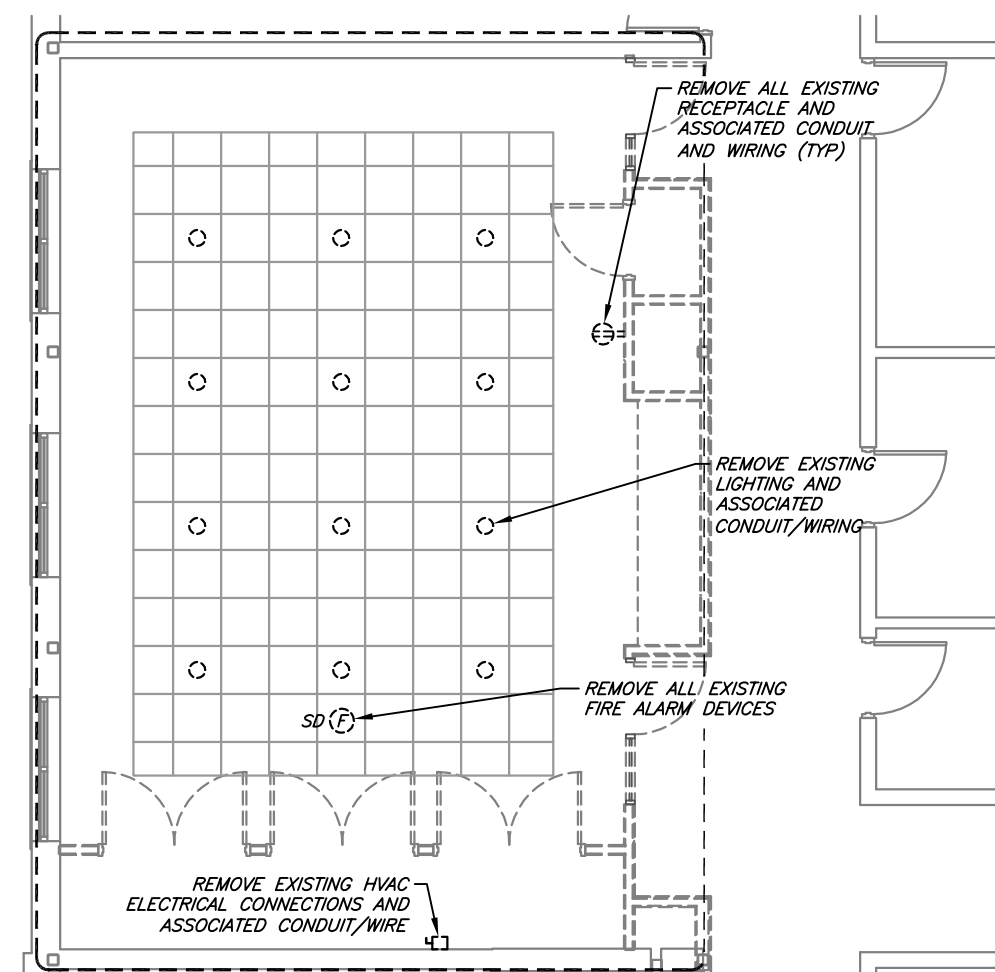
LIGHTING FIXTURE SCHEDULE											
MARK	MANUFACTURER	MODEL #	FINISH	MOUNTING	LAMPS			FIXTURE WATTS	VOLTAGE	APPROVED MANUFACTURERS	NOTES
					TYPE	CODE	QTY				
A	OFCL	CEILING FAN W/ LIGHT KIT	-	SURFACE	INCAND	60W MAX	3	180	120	-	1,4,5,6
B	OFCL	VANITY LIGHT	-	SURFACE	INCAND	60W MAX	4	240	120	-	1,6

NOTES:  
1. FIXTURE SHALL BE OWNER FURNISHED AND CONTRACTOR INSTALLED. COORDINATE WITH ARCHITECT / OWNER FOR INSTALLATION REQUIREMENTS.  
2. FIXTURE LAMP AND BALLAST SHALL BE CAPABLE OF OPERATING DOWN TO 0 DEGREES F AND UP TO 110 DEGREES F.  
3. FIXTURE SHALL BE LISTED FOR OUTDOOR USE AND SHALL BE UL LISTED FOR DAMP OR WET LOCATION AS REQUIRED.  
4. FIXTURE SHALL BE IC RATED WHERE INSTALLED IN CONTACT WITH INSULATION.  
5. FIXTURE SHALL BE FIRE RATED OR INSTALLED WITHIN A FIRE RATED ENCLOSURE WHERE RECESSED IN CEILING.  
6. COORDINATE WITH ARCHITECT FOR EXACT MOUNTING HEIGHT AND LOCATION.  
7. PROVIDE FIXTURE WITH EMERGENCY BATTERY BACK-UP FOR MINIMUM 90-MINUTES OPERATION.  
8. PROVIDE CLIPS OR MEAN OF SUPPORT AS REQUIRED TO COMPLY WITH N.E.C. ARTICLE 410-16.



## PARTIAL SECOND FLOOR ELECTRICAL IMPROVEMENT PLAN

2  
1/8" = 1'-0"



## PARTIAL SECOND FLOOR ELECTRICAL DEMOLITION PLAN

1  
1/8" = 1'-0"

## GENERAL NOTES:

- THESE GENERAL ELECTRICAL NOTES APPLY TO ALL ELECTRICAL SHEETS.
- CONTRACTOR SHALL OBTAIN COPY OF HAMPTON INN BRAND STANDARDS. ALL WORK SHALL COMPLY WITH HOTEL STANDARDS AND SPECIFICATIONS, UNLESS APPROVED OTHERWISE BY OWNER OR OWNER'S AUTHORIZED REPRESENTATIVE. CONTRACTOR SHALL NOTIFY ARCHITECT AND DESIGN ENGINEER IF DISCREPANCIES ARE FOUND BETWEEN HOTEL STANDARDS AND CONSTRUCTION DOCUMENTS.
- ALL WORK SHALL COMPLY WITH 2014 NATIONAL ELECTRICAL CODE WITH ALL AMENDMENTS, PER LOCAL AUTHORITY HAVING JURISDICTION.
- PLANS ARE DIMENSIONAL AND SHALL NOT BE SCALED. REFER TO ARCHITECTURAL DRAWINGS AND EXISTING CONDITIONS FOR DIMENSIONS. FIELD VERIFY DIMENSIONS.
- COOPERATE CLOSELY WITH ALL OTHER TRADES TO EXPEDITE CONSTRUCTION AND AVOID INTERFERENCES AND CONFLICTS. COORDINATE LOCATIONS OF CONDUITS, RACEWAYS, SUPPORTS, ETC. WITH ALL TRADES PRIOR TO ROUGH-IN. FIELD VERIFY ALL TRADES TO BE INSTALLED AT A SLOPE.
- PROVIDE METAL INSULATION BARRIER AROUND ALL RECESSED LIGHT FIXTURES INSTALLED IN CEILINGS WITH INSULATION THAT COULD BE IN DIRECT CONTACT WITH LIGHT FIXTURE. BARRIER SHALL BE EQUAL TO PRODUCT MANUFACTURED BY E.F. BARRIER. BARRIER SHALL MAINTAIN 3" CLEARANCE BETWEEN INSULATION AND THE LIGHT FIXTURE.
- COORDINATE REQUIRED CLEARANCES ABOUT AND ABOVE ELECTRICAL EQUIPMENT WITH PLUMBING, HVAC AND OTHER TRADES TO KEEP DUCTWORK, PIPING, ETC. FROM BEING INSTALLED ABOVE ELECTRICAL EQUIPMENT.
- COORDINATE LIGHT FIXTURE LOCATIONS WITH ARCHITECTURAL, REFLECTED CEILING PLANS. COORDINATE LOCATIONS OF WALL MOUNTED LIGHT FIXTURES WITH ARCHITECTURAL, INTERIOR ELEVATIONS PRIOR TO ROUGH-IN.
- COORDINATE WALL MOUNTED SWITCH, RECEPTACLE, TELEPHONE, DATA, AND OTHER ELECTRICAL SYSTEM DEVICE LOCATIONS WITH ARCHITECTURAL, INTERIOR AND MILLWORK ELEVATION DRAWINGS PRIOR TO ROUGH-IN. ALL ROUGH-IN LOCATIONS SHALL BE APPROVED BY ARCHITECT.
- COMMUNICATIONS OUTLETS/DEVICES (DATA AND TELEPHONE), WALL PLATES, AND ASSOCIATED PLENUM RATED WIRING SHALL BE SUPPLIED AND INSTALLED BY OTHERS UNDER A SEPARATE CONTRACT WITH THE OWNER UNLESS OTHERWISE SPECIFIED. BOX AND CONDUIT SHALL BE PROVIDED BY ELECTRICAL CONTRACTOR.
- ALL HVAC EQUIPMENT THERMOSTATS AND SENSORS AND ASSOCIATED WIRING SHALL BE FURNISHED AND INSTALLED BY THE HVAC CONTRACTOR. ELECTRICAL CONTRACTOR SHALL PROVIDE JUNCTION BOX WITH 0.75" CONDUIT TO ACCESSIBLE CEILING SPACE AT FINISHED AREAS, OR TO STRUCTURE AT UNFINISHED AREAS. REFER TO MECHANICAL DRAWINGS AND COORDINATE WITH HVAC CONTRACTOR FOR LOCATIONS. CONDUIT STUDS SHALL BE TERMINATED WITH INSULATING BUSINGS.
- INSTALL RECEPTABLES ADJACENT TO PHONE, DATA, TV, ETC. OUTLETS WHERE SHOWN IN SAME LOCATION.
- ALL BRANCH CIRCUITS OR FEEDERS SHALL BE INSTALLED WITH AN EQUIPMENT GROUNDING CONDUCTOR ROUTED BY THE HVAC CONTRACTOR.
- ALL LIGHT SWITCHES, FIRE ALARM SYSTEM PULL STATIONS, THERMOSTATS SHALL BE INSTALLED WITHIN 12" OF THE END OF A WALL OR DOOR OPENING. DO NOT INSTALL IN HIGHLY VISIBLE AREAS, I.E. CENTERS OF WALLS. PRIOR TO INSTALLATION AT QUESTIONABLE LOCATIONS, CONTACT THE ARCHITECT TO OBTAIN EXACT INSTALLATION LOCATIONS. ALL ROUGH-IN LOCATIONS SHALL BE APPROVED BY ARCHITECT.
- COORDINATE WITH TELEPHONE, DATA, CABLE TELEVISION, AND OTHER ASSOCIATED VENDORS TO ESTABLISH EXACT ROUGH-IN LOCATIONS FOR ALL DEVICES.
- PROVIDE ALL ACCESSORIES, COMPONENTS, ETC. REQUIRED FOR COMPLETE INSTALLATION OF SPECIFIED EQUIPMENT.
- ALL CONDUCTORS SHALL BE COPPER UNLESS SPECIFICALLY NOTED OTHERWISE.
- MAINTAIN ALL CLEARANCES REQUIRED FOR EQUIPMENT COORDINATE WITH ALL CONTRACTORS, SUCH THAT NO ROUTE PIPING, DUCTWORK, ETC. IS INSTALLED ABOVE ELECTRICAL PANELS.
- DRAWINGS REPRESENT FINAL RESULT. REMOVE, RELOCATE, MODIFY EXISTING EQUIPMENT, FIXTURES, WIRING, CONDUIT, ETC. AS REQUIRED. FIELD VERIFY EXISTING CONDITIONS AND EXACT REQUIREMENTS.
- CONTRACTOR SHALL INCLUDE IN BID THE COSTS TO CUT, PATCH AND REPAIR EXISTING WALLS, FLOORS AND CEILING CONSTRUCTION AS REQUIRED TO INSTALL EQUIPMENT, CONDUIT, ETC.
- SEAL ALL PENETRATIONS THROUGH FIRE-RATED ASSEMBLIES AS NECESSARY TO RESTORE FIRE-RESISTANCE RATING OF ASSEMBLY. REFER TO ARCHITECTURAL PLANS AND SPECIFICATIONS FOR RATED ASSEMBLIES, FIRESTOPPING MATERIALS AND REQUIREMENTS.
- REFER TO ARCHITECTURAL PLANS FOR WALLS/PARTITIONS WITH STC RATING AND FIRE-RATINGS. ALL FIRE-RATED PARTITIONS AND/OR ROOMS REQUIRED TO HAVE AN STC RATING (SEE MEETING ROOMS, GUEST ROOMS AND ETC.) SHALL HAVE ELECTRICAL BOX PADS ON ALL ELECTRICAL BOXES AS FOLLOWS:  
A) AT ALL NON-RATED WALLS WITH STC RATING, PROVIDE LOWRY'S ELECTRICAL BOX PAD AS MANUFACTURED BY HARRY A. LOWRY & ASSOCIATES; SUN VALLEY, CA  
B) AT FIRE-RATED WALLS PROVIDE:  
1. FIRE-RATED FSP FIRESTOP PUTTY PADS AS MANUFACTURED BY HEVI-DUTY NELSON; TULSA, OK. PHONE: 918-752-7553.  
2. FIRESTOPPING CASKET MOUNTED TO THE BACK SIDE OF COVERPLATES UNDER THE NAME OF BID FIRESHIELD AS MANUFACTURED BY RESTOREALL; HOUSTON, TX. 800-231-5345.  
C) ELECTRICAL BOXES IN OPPOSITE SIDES OF WALLS SHALL NOT BE INSTALLED BACK TO BACK AND SHALL NOT BE INSTALLED IN SAME STUD CAVITY. IN ALL INSTANCES, BOXES SHALL BE A MINIMUM OF 8" APART. WHERE NECESSARY TO MEET THIS REQUIREMENT, INSTALL ADDITIONAL STD AND/OR BLOCKING BETWEEN STANDARD STUDS.
- CONTRACTOR SHALL SUBMIT ALL FIRE-STOPPING MATERIALS FOR REVIEW AND APPROVAL. PROVIDE COMPLETE WITH ALL LITERATURE AND SPECIFICATION INFORMATION TO CLEARLY SHOW COMPLIANCE WITH SPECIFICATIONS AND BUILDING CODES FOR INTENDED APPLICATION. REFER TO SPECIFICATIONS FOR SUBMITTAL REQUIREMENTS.

## SMOKE DETECTOR NOTE:

- ALL GUEST ROOM SMOKE DETECTORS SHALL BE FIRE ALARM SYSTEM ADDRESSABLE TYPE.
- SMOKE DETECTION AT GUESTROOM SMOKE DETECTOR SHALL ACTIVATE ANNUNCIATION DEVICES WITHIN A SINGLE SUITE/STUDIO OR GUEST UNIT, NOT AT ALL GUESTROOMS THROUGHOUT THE HOTEL. SMOKE DETECTION AT A GUESTROOM DETECTOR SHALL ALSO INDICATE AN ALARM AT FACP. REMOTE FIRE ALARM SYSTEM ANNUNCIATORS AND REMOTE MONITORING (AS PROGRAMMED BY CERTIFIED SYSTEM INSTALLER).

## LOW VOLTAGE CONDUIT NOTES:

- CONTRACTOR SHALL PROVIDE 3/4" CONDUIT FROM EACH LOW VOLTAGE DEVICE AT GUESTROOM/SUITE TO NEAREST HUB ROOM/LOCATION. EXCEPTION: IN LIEU OF THE TV LOCATION BOXES HAVING SEPARATE DEDICATED CONDUIT, CONTRACTOR MAY PROVIDE (1) 1" CONDUIT TO FIRST BOX AND CONTINUE 3/4" CONDUIT TO SECOND TV LOCATION BOX.
- PRIOR TO INSTALLATION, CONTRACTOR SHALL OBTAIN COPY OF HOTEL BRAND STANDARDS. IF DISCREPANCIES ARE FOUND, NOTIFY ARCHITECT AND/OR ENGINEER.

## SPECIAL NOTES:

- REFER TO ARCHITECTURAL DRAWINGS AND FIELD VERIFY EXACT SCOPE OF DEMOLITION FOR ELECTRICAL SYSTEMS TO ACCOMMODATE OVERALL SCOPE OF PROJECT.
- FIELD VERIFY EXISTING CONDITIONS. CONSULT WITH ENGINEER FOR ADJUSTMENTS TO DRAWINGS AS REQUIRED.
- FIELD VERIFY SPACE AVAILABLE FOR NEW LIGHTING FIXTURES, CONDUITS, EQUIPMENT, ETC., AND ADJUST EXISTING LAYOUTS, ROUTINGS, ETC. AS REQUIRED.
- COORDINATE FOR REMOVAL AND REPAIR OF EXISTING FINISHES AND GENERAL CONSTRUCTION AS REQUIRED TO ACCOMMODATE INSTALLATION OF NEW SYSTEMS AND COMPONENTS.
- REFER TO ARCHITECTURAL ELEVATIONS FOR COORDINATION OF ALL DEVICE LOCATIONS. REVIEW DEVICE MOUNTING HEIGHTS PRIOR TO ANY ROUGH-IN. CONTRACTOR SHALL NOTIFY ARCHITECT AND/OR DESIGN ENGINEER IF DISCREPANCIES ARE FOUND.
- GUESTROOM POWER, DATA, PHONE AND/OR TV OUTLETS WILL NOT BE ALLOWED INSTALLED BACK-TO-BACK, OR IN SAME STUD SPACE. THIS REQUIREMENT IS TO MAINTAIN FIRE RATING AND PREVENT SOUND TRANSMISSION BETWEEN GUESTROOMS. IT IS THE CONTRACTOR'S RESPONSIBILITY TO ADJUST LAYOUT AS NECESSARY FOR DIFFERENT ROOM ORIENTATIONS TO ENSURE 8" MINIMUM CLEAR BETWEEN ELECTRICAL BOXES AND FOR BOX INSTALLATIONS TO BE IN DIFFERENT STUD SPACES, I.E. WHERE SAME ROOM TYPES ARE SIDE-BY-SIDE. WITH LAYOUT APPROVED, CONTRACTOR SHALL ADJUST DEVICE LOCATIONS TO MEET THESE REQUIREMENTS, WHILE ENSURING THAT DEVICES ARE STILL ACCESSIBLE FOR INTENDED EQUIPMENT CONNECTION.

## KEYNOTES:

- PROVIDE WALL-MOUNT FIRE ALARM SYSTEM PHOTOELECTRIC, ADDRESSABLE SMOKE DETECTOR WITH SOUNDER BASE. SOUNDER BASE SHALL PROVIDE A MINIMUM OF 85DBA AT 3m(10FT); MINIMUM OF 75DBA "AT THE FLOOR". INSTALL FOR THE TOP OF THE SMOKE DETECTOR TO BE NO CLOSER THAN 4" TO THE CEILING AND THE BOTTOM OF THE SMOKE DETECTOR SHALL BE NO LOWER THAN 12" BELOW THE CEILING.
- CIRCUIT NEW 120-VOLT SINGLE-PHASE CIRCUIT TO CIRCUIT BREAKER AT NEAREST AVAILABLE PANEL. FIELD VERIFY EXACT LOCATION AND REQUIREMENTS.
- CONNECT TO EXISTING CORRIDOR LIGHTING CIRCUIT. FIELD VERIFY EXACT LOCATION AND REQUIREMENTS.
- FIELD COORDINATE EXACT ROUGH-IN LOCATION FOR VANITY LIGHTING FIXTURES.
- CIRCUIT NEW 208-VOLT SINGLE-PHASE CIRCUIT TO CIRCUIT BREAKER AT NEAREST AVAILABLE PANEL. FIELD VERIFY EXACT LOCATION AND REQUIREMENTS.

## FIRE ALARM SYSTEM NOTES:

- PROVIDE FIRE ALARM SYSTEM INITIATION DEVICES AND NOTIFICATION APPLIANCES, MONITORING AND CONTROL DEVICES AS INDICATED ON THE DRAWINGS AND/OR AS REQUIRED PER SPECIFICATIONS, LATEST EDITION OF NFPA 72 OR AUTHORITY HAVING JURISDICTION(HAJ).
- ALL FIRE ALARM WORK SHALL BE IN ACCORDANCE WITH THE LATEST EDITION OF NFPA 72 AND THE NATIONAL ELECTRICAL CODE.
- FIRE ALARM SYSTEM WIRING SHALL BE PER MANUFACTURER'S INSTALLATION INSTRUCTIONS AND SHALL COMPLY WITH N.E.C. ARTICLE 760.
- SYSTEM CONNECTIONS FOR INITIATING DEVICES SHALL BE CLASS B, STYLE A; NOTIFICATION APPLIANCE CIRCUITS SHALL BE CLASS B STYLE S.
- ALL FIRE ALARM SYSTEM WIRING SHALL BE IN CONDUIT. PAINT FIRE ALARM CONDUIT, JUNCTION BOXES AND FITTINGS RED.
- WHERE FIRE ALARM CABLE IS INSTALLED IN A PLENUM, FIRE ALARM SYSTEM WIRING SHALL BE INSTALLED IN CONDUIT, OR SHALL BE PLENUM-RATED.
- FIRE ALARM SYSTEM EQUIPMENT SUBMITTALS SHALL INCLUDE PRODUCT DATA SHEETS, FIRE ALARM SYSTEM PLAN, EQUIPMENT WIRING DIAGRAMS, SEQUENCE OF OPERATIONS, VOLTAGE DROP AND BATTERY CALCULATIONS. IN ADDITION TO SUBMITTALS BEING SUBMITTED TO A/E, SUBMITTALS SHALL BE SUBMITTED TO AUTHORITY HAVING JURISDICTION(HAJ) FOR REVIEW AND APPROVAL. AN APPROVED COPY AS SUBMITTED TO HAJ SHALL ALSO BE SUBMITTED TO A/E.
- COORDINATE WITH FIRE SPRINKLER SYSTEM CONTRACTOR. PROVIDE NUMBERS OF FIRE ALARM MONITORING MODULES AS REQUIRED FOR ALL TAMPER SWITCHES AND FLOW SWITCHES.
- FIRE ALARM SYSTEM SHALL BE INSTALLED IN ACCORDANCE WITH NFPA STANDARDS AND MANUFACTURER'S RECOMMENDATIONS, AND SHALL BE INSTALLED BY PERSONS WHO ARE QUALIFIED AND EXPERIENCED IN THE INSTALLATION, INSPECTION AND TESTING OF FIRE ALARM SYSTEMS. INSTALLER SHALL HAVE A MINIMUM OF 3 YEARS OF EXPERIENCE. PERFORM OPERATIONAL SYSTEM TESTS UPON COMPLETION OF INSTALLATION. CORRECT DEFICIENCIES AND RETEST PRIOR TO OWNER OCCUPATION OF BUILDING. PROVIDE A COMPLETED NFPA 72 RECORD OF COMPLETION FORM TO THE OWNER AND AUTHORITY HAVING JURISDICTION.

## FIRE ALARM SYMBOLS:

	AV CEILING MOUNTED AUDIO/VISUAL FIRE ALARM ANNUNCIATING DEVICE
	CO WALL/CEILING MOUNTED CARBON MONOXIDE DETECTOR MONITORED BY FIRE ALARM SYSTEM
	SD CEILING MOUNTED SMOKE DETECTOR
	SHD SMOKE DETECTOR COMBINATION SMOKE/HEAT DETECTOR
	DD DUCT MOUNTED SMOKE DETECTOR WITH SAMPLING TUBE, INSTALL AT RETURN DUCT UNLESS OTHERWISE NOTED
	ZACP FIRE ALARM SYSTEM CONTROL PANEL
	AV WALL MOUNTED AUDIO/VISUAL FIRE ALARM ANNUNCIATING DEVICE
	FA REMOTE ANNUNCIATOR PANEL
	FS FLOW SWITCH
	IM FIRE ALARM SYSTEM INDIVIDUAL ADDRESSABLE MODULE
	A ANNUNCIATING DEVICE
	TS TAMPER SWITCH
	V WALL MOUNTED VISUAL FIRE ALARM ANNUNCIATING DEVICE

**Colvin Jones Davis LLC**  
Engineering | Energy | Innovation  
2101 West Chesterfield Boulevard, Suite B-105A, Springfield, MO 65807  
P: 417.877.1700 F: 417.877.1701 www.colvinjonesdavis.com

Special Notice: Drawings prepared by Colvin Jones Davis LLC are instruments of service for use solely with respect to this project. Colvin Jones Davis LLC and its employees shall not be held responsible for any damage, liability or costs resulting directly or indirectly from such changes to the fullest extent of the law. The user of these drawings shall assume all responsibility for any damage, liability or costs resulting directly or indirectly from such changes to the fullest extent of the law.

REVISIONS

## ELECTRICAL PLANS

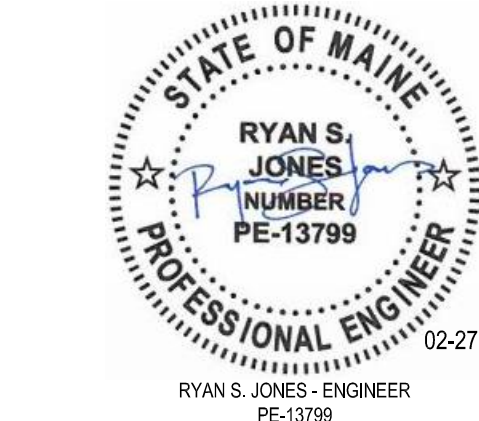
### HAMPTON INN RENOVATION

209 FORE ST., PORTLAND, MAINE 04101

### GERRI A KIELHOFNER, AIA ARCHITECT

319 N MAIN ST, SUITE 200, SPRINGFIELD, MISSOURI, 65806 T: 417-865-6107

DRAWN BY AKD	CHECKED BY AKD
ISSUE DATE 02-27-2015	PROJECT 15012.PMHR



RYAN S. JONES - ENGINEER  
PE-13799

# E1.1