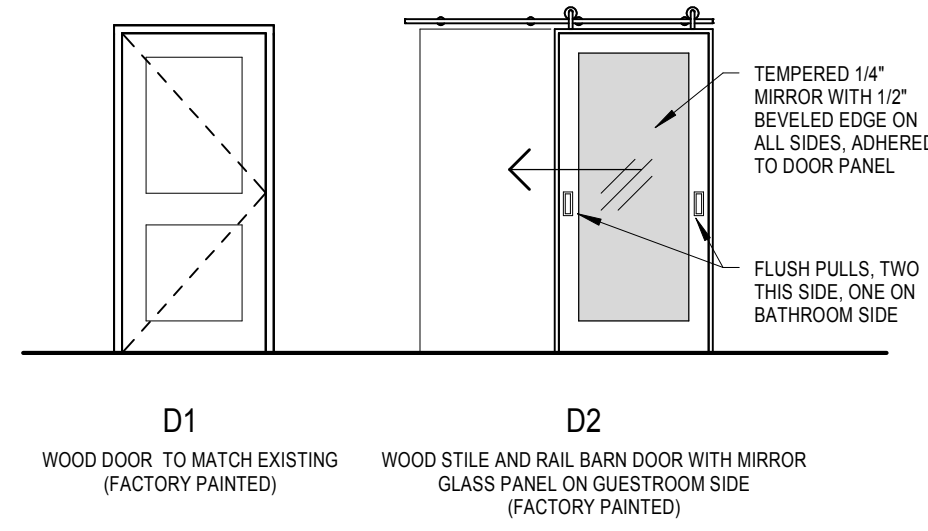


MARK	DOOR			TYPE	MATL	FRAME	FIRE RATING	HARDWARE SET NO.	NOTES
	WD	Size HGT	THK						
A	3'-0"	6'-8"	1 3/4"	D1	WOOD	HM	20 MIN	1	3'-2 1/2" WOOD DOOR LEAF FOR 2'-10 1/2" WIDE OPENING. SEE DETAIL 8A1.2
B	2'-10 1/2"	6'-8"	1 3/4"	D2	WOOD	WOOD		2	

NOTE: PAINT HOLLOW METAL FRAMES PER GENERAL NOTES.

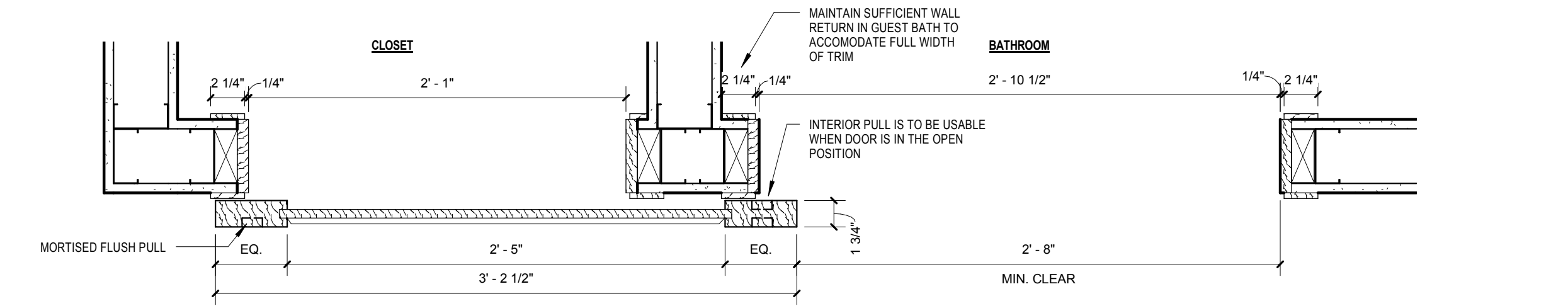


HARDWARE SETS:

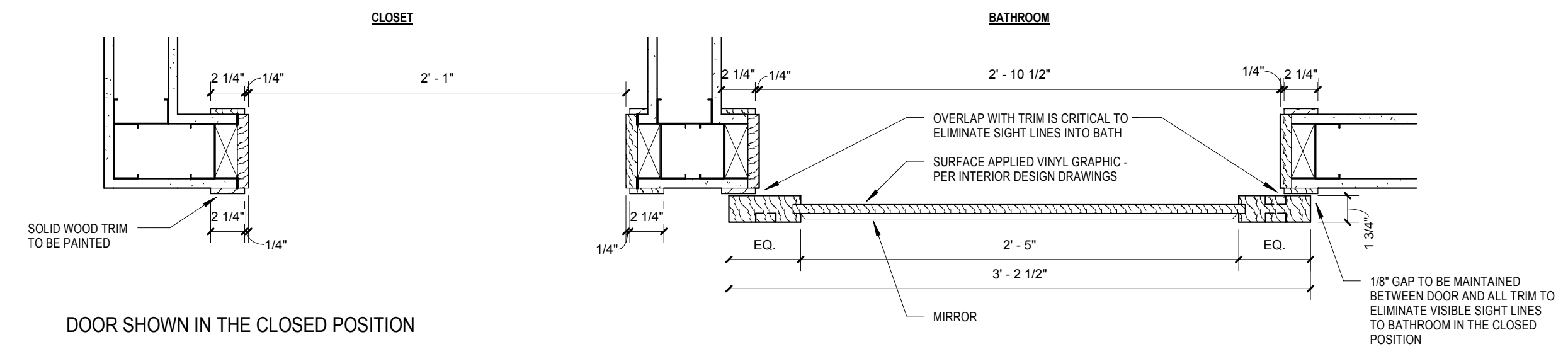
SET 1:
 HINGES
 CLOSER
 CARO READER
 DOOR VIEWER
 SOUND/SMOKE SEAL
 DOOR SWEEP
 DOOR LATCH
 SILENCERS
 WALL STOP
 NIGHT LATCH SOLID BAR DOOR GUARD WITH PROTECTIVE PLATE VINYL THRESHOLD (DHS) FT 2.75 OR CIT 2.75)

SET 2:
 BARN DOOR HARDWARE: HAFELE, SLIDING DOOR PART# 940.064.1X0.H PER HILTON STANDARDS.
 INCLUDE ALL NECESSARY STOPS AND FLUSH PULLS FOR A COMPLETE WORKING SYSTEM
 **US26D FINISH

*MATCH EXISTING TYPE AND MANUFACTURER FOR ALL HARDWARE THIS SET.
 **US26D FINISH



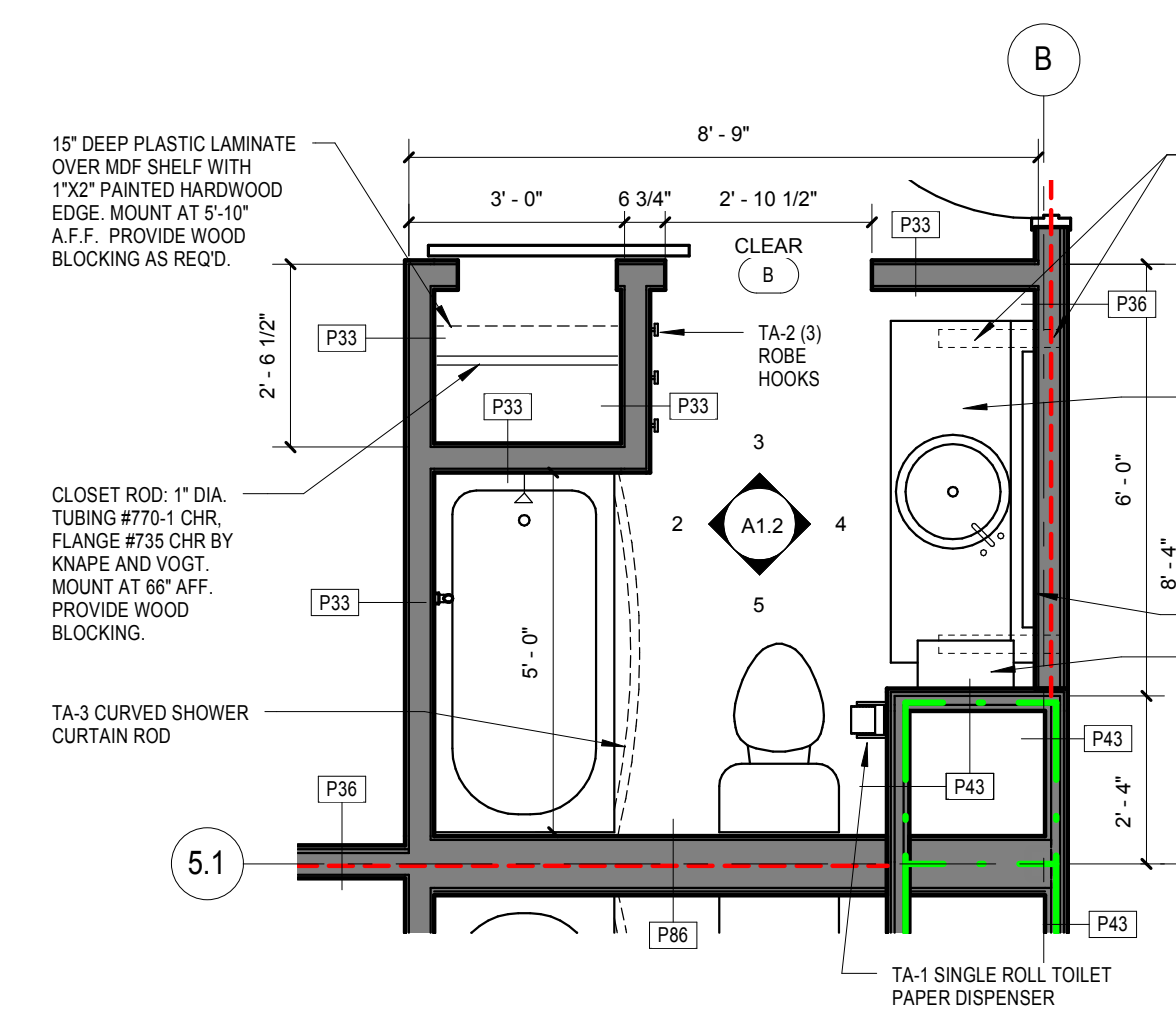
DOOR SHOWN IN THE OPEN POSITION



DOOR SHOWN IN THE CLOSED POSITION

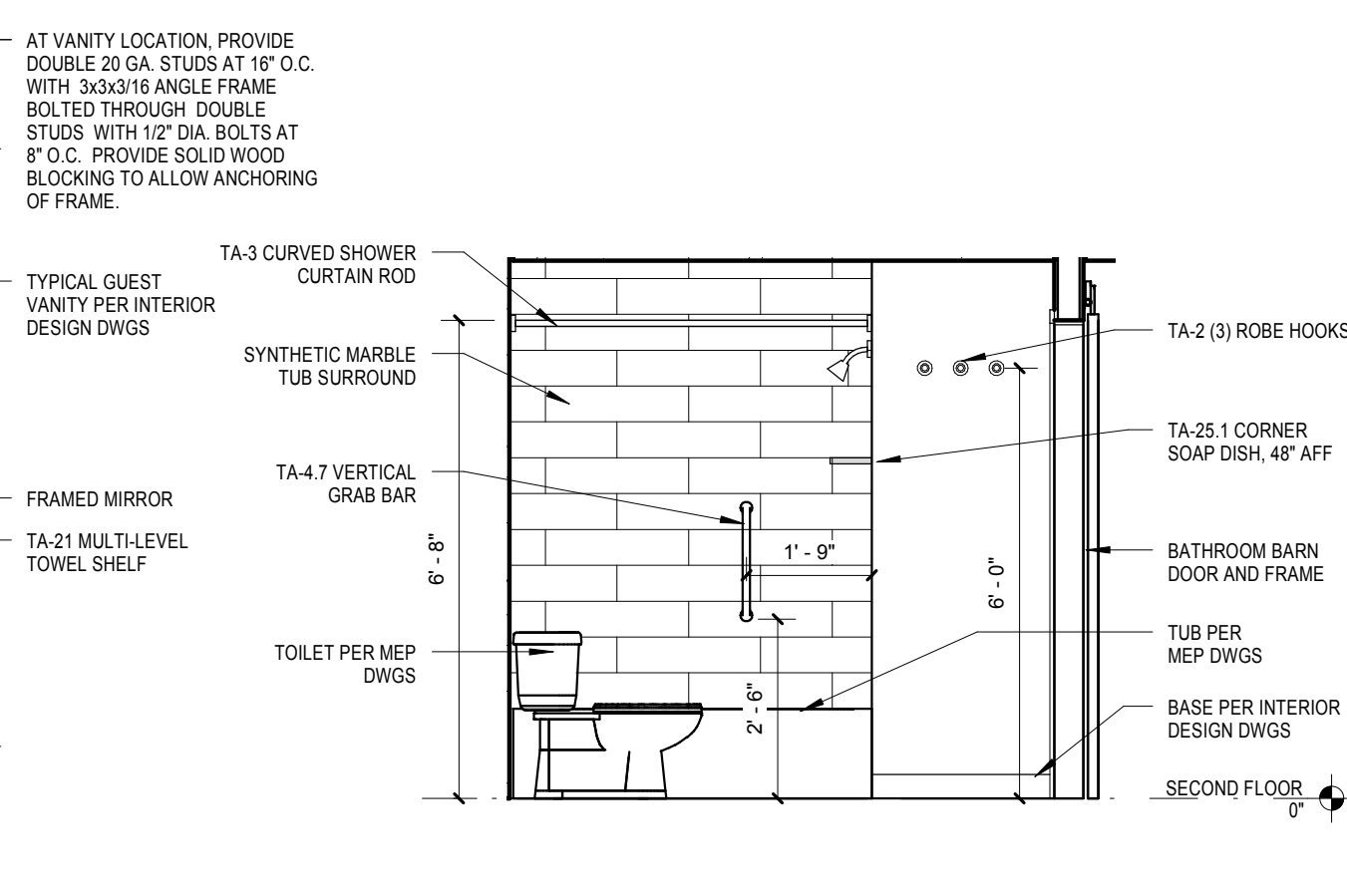
8 GUESTROOM BATHROOM SLIDING DOOR DETAIL

1 1/2" = 1'-0"



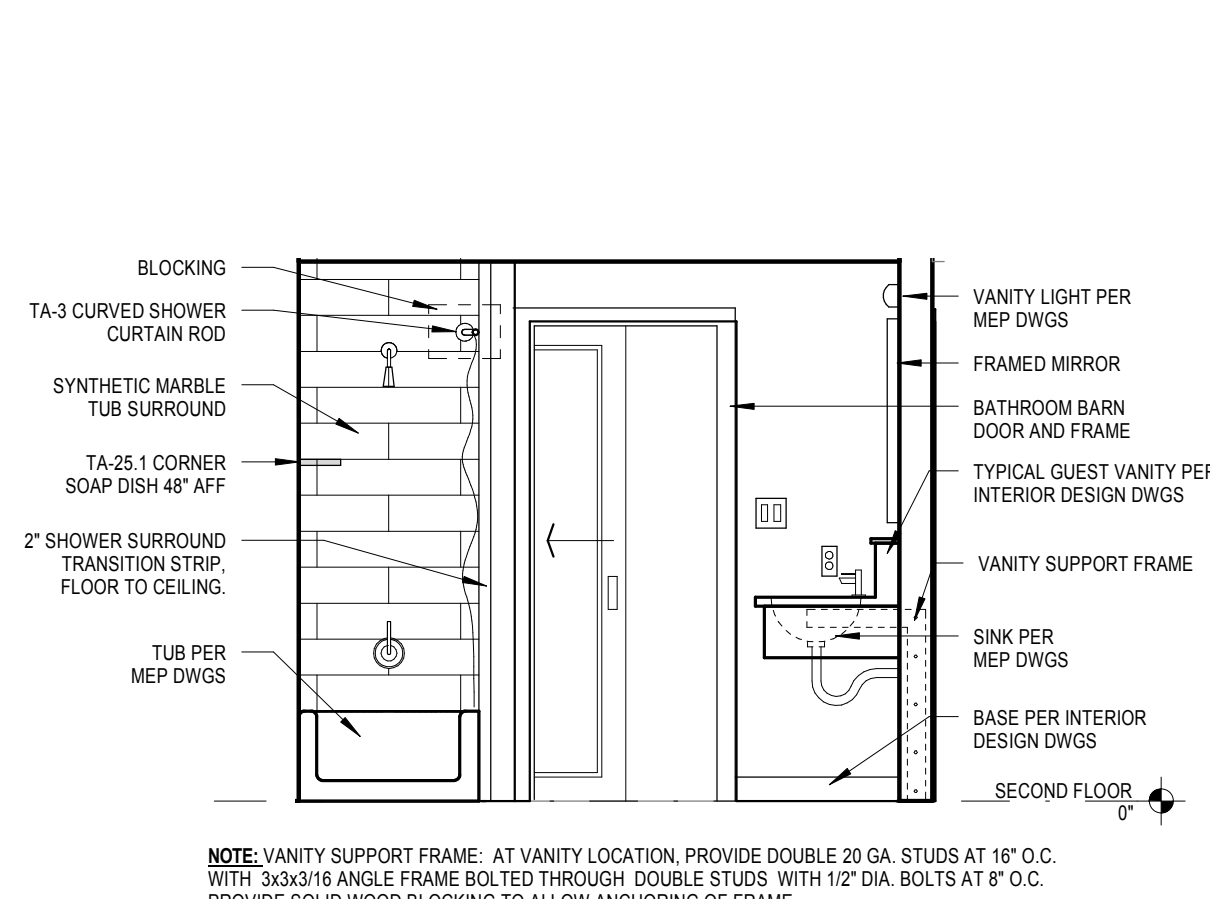
1 ENLARGED DOUBLE QUEEN RESTROOM

3/8" = 1'-0"



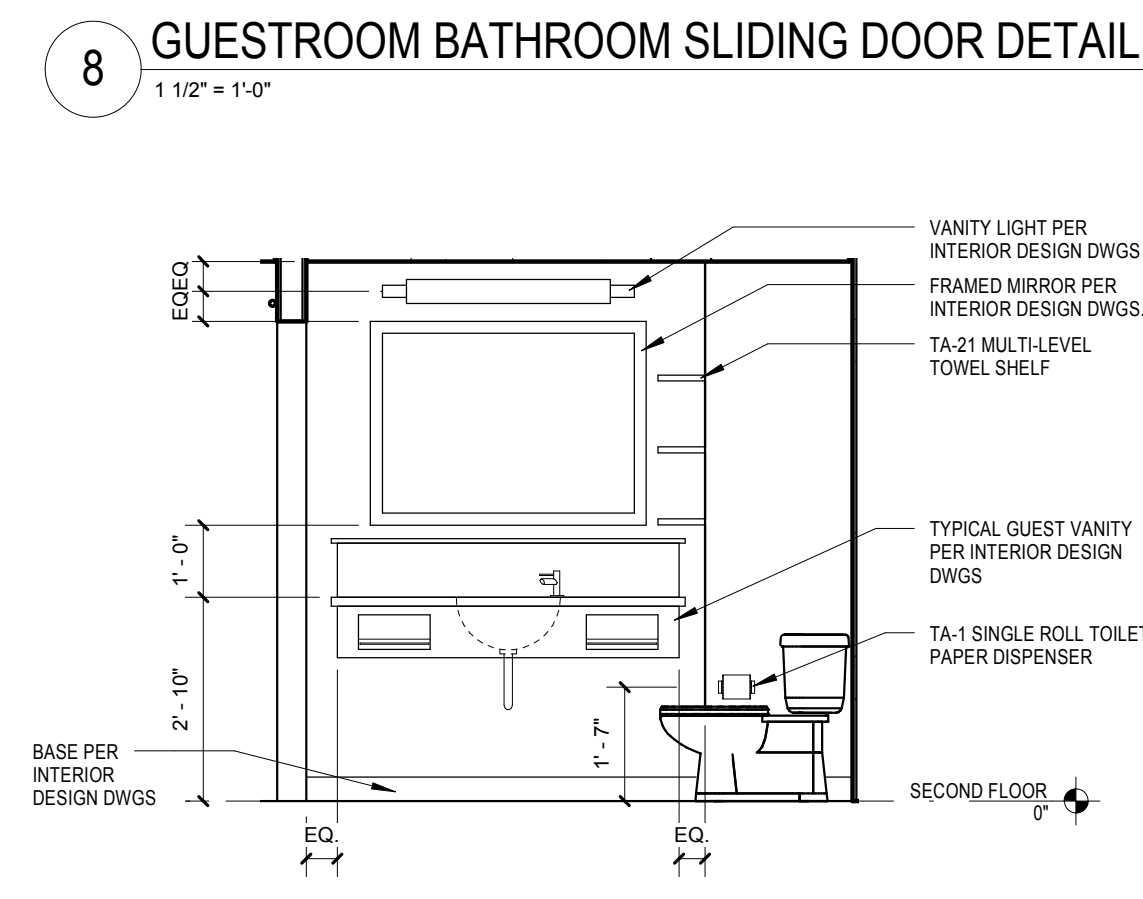
2 BATHROOM ELEVATION - TUB WALL

3/8" = 1'-0"



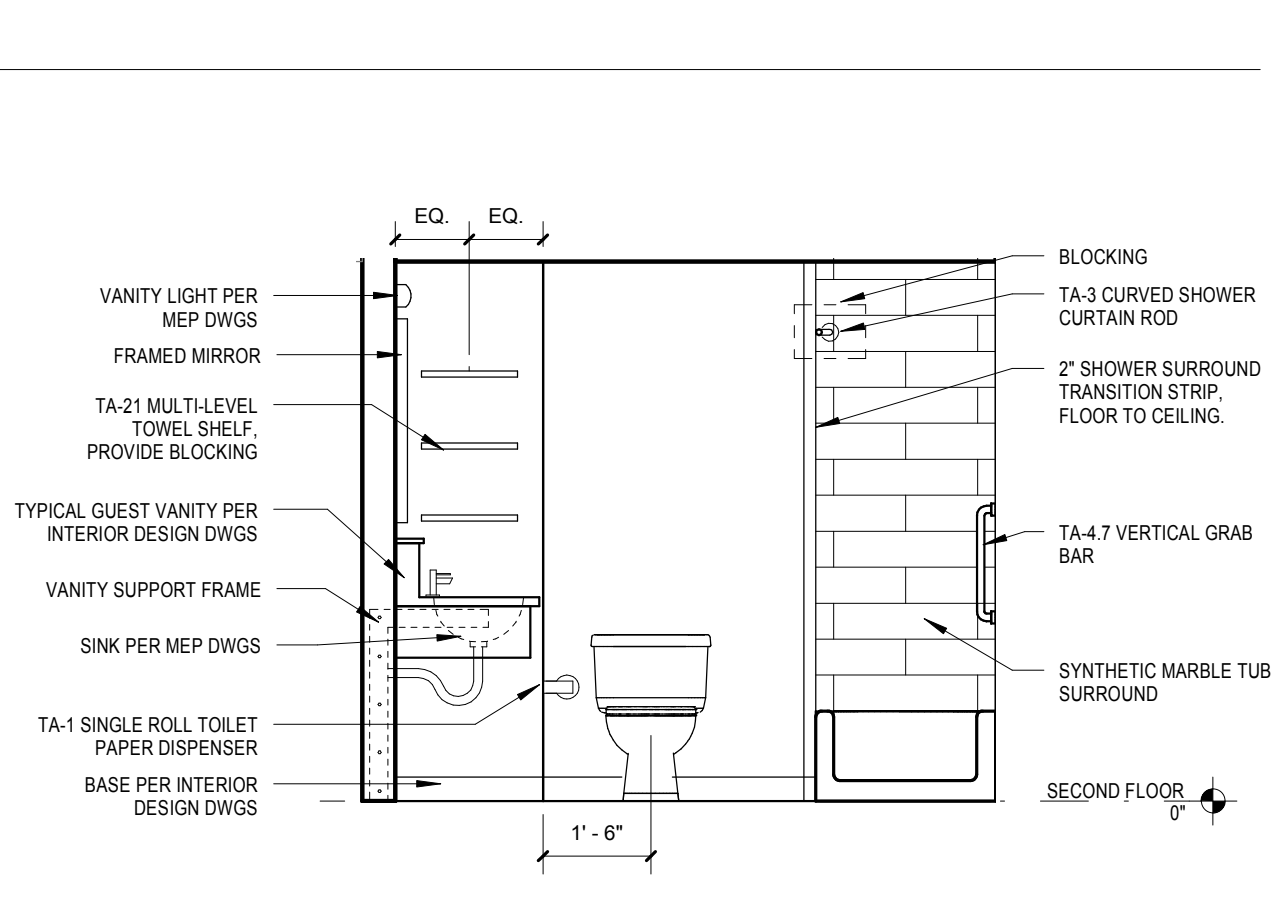
3 BATHROOM ELEVATION - ENTRY WALL

3/8" = 1'-0"



4 BATHROOM ELEVATION - VANITY WALL

3/8" = 1'-0"



5 BATHROOM ELEVATION - TOILET WALL

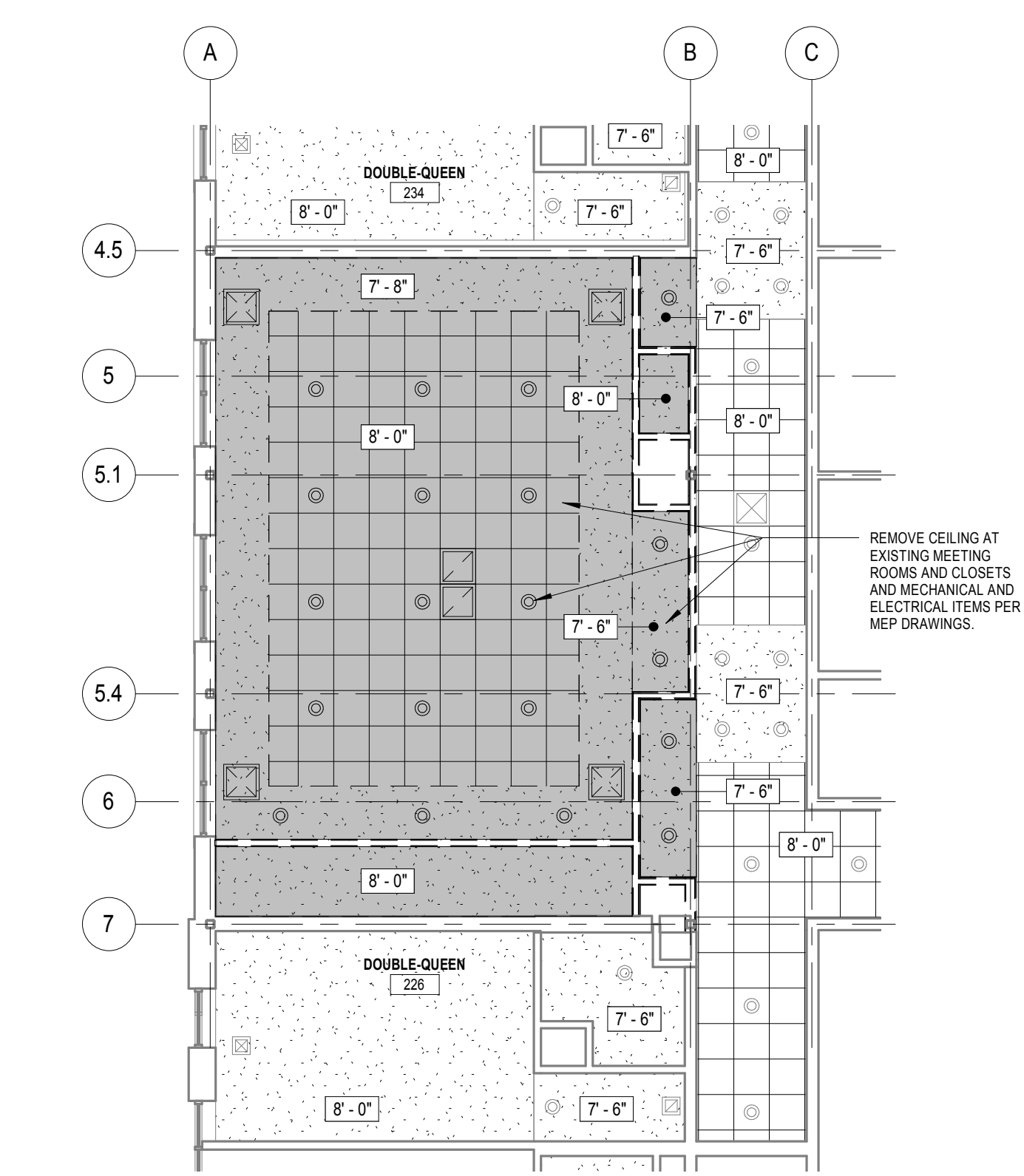
3/8" = 1'-0"

CEILING TYPES

LEGEND:	DESCRIPTION:
[Pattern]	TYPE 1 (1) LAYER OF 5/8" TYPE 'C' GYPSUM BOARD OVER 7/8" 25 GA. METAL FURRING CHANNELS AT 24" O.C. TIED TO 1 1/2" 16" GAUGE COLD ROLLED MANG CHANNELS AT 48" O.C. SUSPENDED WITH HANGER WIRE FROM METAL FLOOR DECK (PART OF EXISTING 2-HR RATED UL ASSEMBLY G261)
[Pattern]	TYPE 3 2" X 2" FIRE-RATED ACOUSTICAL CEILING TILE WITH HOLD-DOWN CLIPS ONE PER 24" LENGTH. SUSPENDED WITH HANGER WIRE ATTACHED TO METAL FLOOR DECK OR JOISTS ABOVE. (PART OF EXISTING 2-HR RATED UL ASSEMBLY G265). PATCH AND REPLACE THIS ASSEMBLY AS NEEDED AT CORRIDOR FOR NEW CONSTRUCTION.

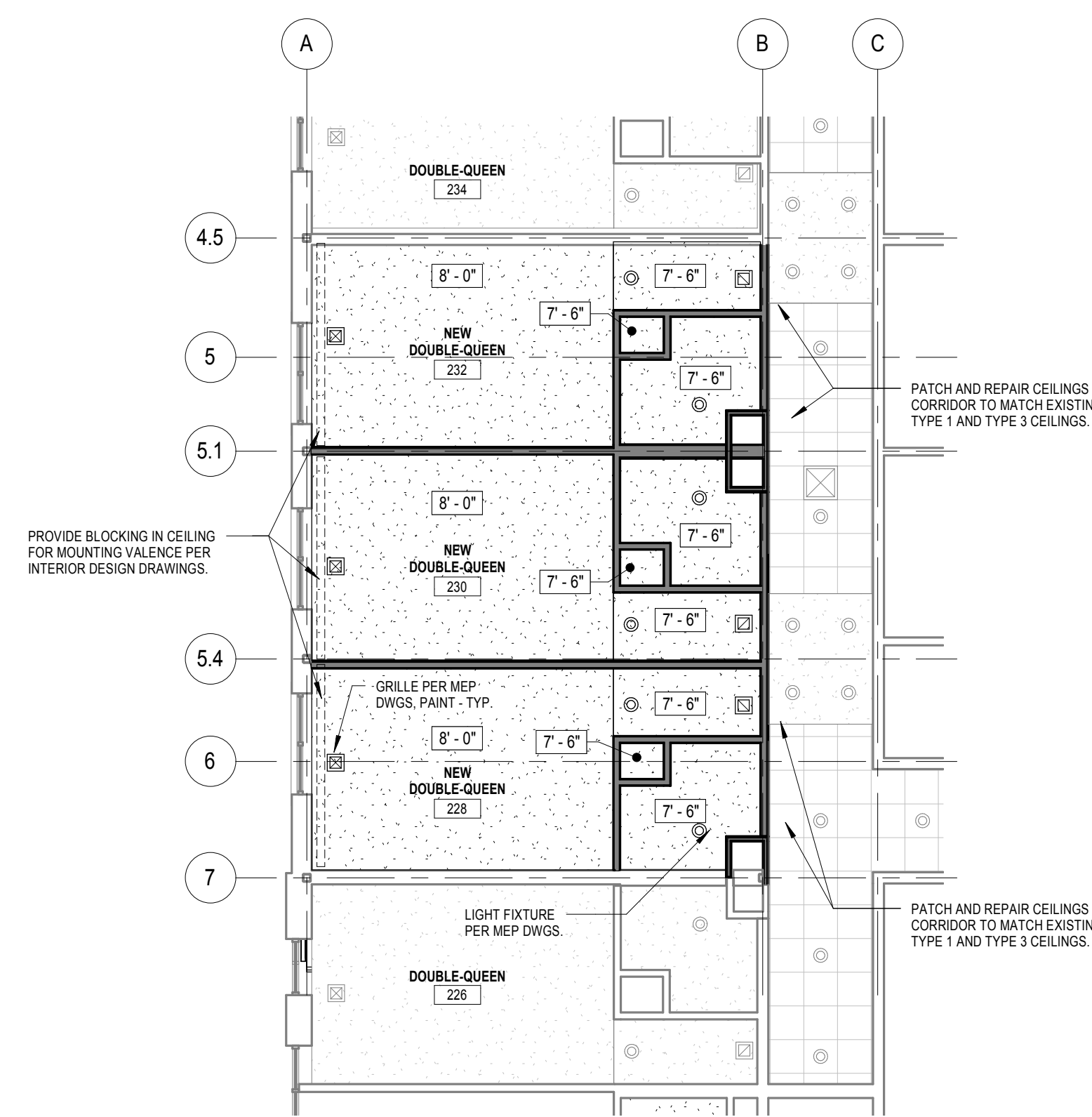
GUEST BATHROOM SPECIFICATIONS

ID NO.	DESCRIPTION	MANF/MODEL
TA-1	TOILET PAPER ROLL HOLDER	WINGITS MODERN ELEGANCE DECO TOILET PAPER HOLDER - POLISHED CHROME DELTA ARZO TOILET PAPER HOLDER - POLISHED CHROME
TA-2	TOWEL/ROBE HOOK SURFACE MTD.	WINGITS MODERN ELEGANCE SINGLE ROBE HOOK - POLISHED CHROME DELTA ARZO ROBE HOOK - POLISHED CHROME
TA-3	SHOWER CURTAIN ROD (BOWED)	WINGITS MODERN ELEGANCE CURVED SHOWER ROD - POLISHED CHROME
TA-4.7	GRAB BAR VERTICAL SURF. MTD.	WINGITS MODERN ELEGANCE 24" GRAB BAR - POLISHED CHROME
TA-21	3-SHELF TOWEL HOLDER	PER INTERIOR DESIGN DRAWINGS
TA-25.1	SOAP DISH CORNER MTD.	SYNTHETIC MARBLE - PROVIDED WITH TUB SURROUND PER INTERIOR DESIGN DRAWINGS



6 SECOND FLOOR RCP - DEMO

1/8" = 1'-0"



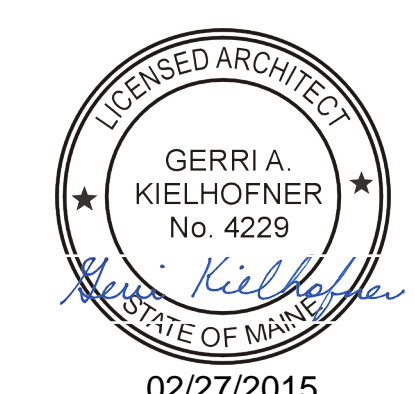
7 SECOND FLOOR RCP - NEW

1/8" = 1'-0"

ENLARGED PLANS, ELEVATIONS, & SCHEDULES

HAMPTON INN PARTIAL RENOVATION
 209 FORE ST., PORTLAND, MAINE 04101

GERRI A KIELHOFNER, AIA ARCHITECT
 319 N MAIN ST. SUITE 200, SPRINGFIELD, MISSOURI, 65806 T: 417-521-6107



02/27/2015

GERRI ANN KIELHOFNER
 ARC 4229

A1.2

DRAWN BY LMD
 CHECKED BY GAK
 ISSUE DATE FEBRUARY 27, 2015
 PROJECT 15012.PMHR