

SHEET NOTES

- 01 EXISTING CEILING TO REMAIN, CLEAN AND RELAMP EXISTING LIGHT FIXTURES, NEW PAINT AS REQUIRED
- 02 EXPOSED STRUCTURE AND SLAB
- 03 EXPOSED STRUCTURE AND SLAB
- 04 EXISTING SPRINKLERS TO BE ACQUIRED, COORDINATE WITH FP ENGINEER, CENTER SPRINKLER HEAD IN CEILING TILE AS REQUIRED
- 05 EXISTING FIRE ALARM SYSTEM TO BE MODIFIED, COORDINATE WITH FP ENGINEER
- 06 MORTUARY RESISTANT ACT
- 07 EXISTING EMERGENCY LIGHTING, ALONG PATH OF EGRESS TO BE MODIFIED AS REQUIRED TO CONFORM WITH CODE REQUIREMENTS, COORDINATE WITH ELECTRICAL DESIGN/BUILD

GENERAL NOTES

- 1. ARCHITECTURAL DRAWINGS ONLY INDICATE LOCATIONS OF ELECTRICAL, MECHANICAL, FIRE PROTECTION, AUDIO-VISUAL AND SECURITY DEVICES. FOR SPECIFICATIONS AND DESIGN OF THESE SYSTEMS REFER TO THE ENGINEERING AND/OR CONSULTANT DRAWINGS. ELECTRICAL CONTRACTOR SHALL BE RESPONSIBLE FOR VERIFYING ALL EXISTING CONDITIONS, FOR COMPLIANCE WITH ALL APPLICABLE CODES FOR PROPER SIZING AND SCHEDULING OF WORK AND FOR PROVIDING RECORD "AS-BUILT" DRAWINGS.
- 2. VERIFY FIELD CONDITIONS AND LOCATIONS OF ALL PLUMBING, STRUCTURAL ELEMENTS AND OTHER APPLICABLE ITEMS, APPRAISE AND MODIFY NON-VISIBLE ITEMS TO INSURE ADEQUATE CLEARANCES FOR CEILING MOUNTED DEVICES AND FOR CEILING LAYOUT AS INDICATED.
- 3. MOUNT STANDARD SWITCHES AS INDICATED ON THE STANDARD MOUNTING HEIGHT ELEVATIONS UNLESS OTHERWISE NOTED.
- 4. INDICATED DIMENSIONS ARE TO THE CENTERLINE OF A SINGLE SWITCH OR TO THE CENTERLINE OF A CLUSTER OF SWITCHES UNLESS OTHERWISE NOTED.
- 5. INSTALLED SWITCHES ON OPPOSITE SIDES OF PARTITIONS IN SEPARATE STUD CAVITIES UNLESS OTHERWISE NOTED, DO NOT INSTALL BACK-TO-BACK.
- 6. PROVIDE MATCHING TELEPHONE DECORA SERIES TYPE COVER PLATES, SWITCHES AND RELATED ITEMS, COLOR: WHITE UNLESS OTHERWISE NOTED. PROVIDE ALL DEVICES UNDER A COMMON FACEPLATE UNLESS OTHERWISE NOTED.
- 7. ALL STROBE, SPEAKER STROBE AND VISUAL ALARM DEVICE LOCATIONS INDICATED ON THE ARCHITECTURAL DRAWINGS ARE FOR DESIGN INTENT. SUBMIT SHOP DRAWINGS TO ARCHITECT AND ENGINEER FOR REVIEW PRIOR TO START OF WORK.
- 8. LOCATE HVAC DIFFUSERS, GRATES AND LIGHTING FIXTURES WITH GRID LINES UNLESS OTHERWISE NOTED. LOCATE SPRINKLER HEADS, SPEAKERS, RECESSED LIGHT FIXTURES AND OTHER CEILING DEVICES IN THE CENTER OF ACoustICAL CEILING UNLESS OTHERWISE NOTED. FINISH OF HVAC DIFFUSERS, REGRILLERS, LIGHT FIXTURE TRIM, URINARY POCKETS, SPEAKER GRILLES AND OTHER CEILING MOUNTED DEVICES TO MATCH CEILING GRID FINISH UNLESS OTHERWISE NOTED.

LEGEND

ACoustICAL CEILING AND GRID

Y-Y' CEILING HEIGHT CHANGE SYMBOL

X-X' FINISH CEILING HEIGHT SYMBOL

GRID START POINT SYMBOL

CEILING FINISH TAG

MS MOTION SENSOR

S CEILING MOUNTED SPEAKER

CA CEILING MOUNTED CAMERA

SD CEILING MOUNTED SMOKE DETECTOR

CEILING MOUNTED EXIT SIGN

WALL MOUNTED EXIT SIGN

E DENOTES EXISTING TO REMAIN

R DENOTES EXISTING TO BE RELOCATED

LIGHT FIXTURE

LIGHT FIXTURE / EMERGENCY CIRCUIT

EXISTING LIGHT FIXTURE TO BE REMOVED

UNDER CABINET FIXTURE

STRIP FIXTURE

PENDANT FIXTURE

RECESSED DOWNLIGHT

RECESSED ADJUSTABLE DOWNLIGHT

RECESSED WALL WASHER

TRACK LIGHTING

SURFACE MOUNTED LIGHT FIXTURE

WALL SCONCE

LIGHT SWITCH

DIMMER SWITCH

RETURN AIR

SUPPLY AIR

CIRCULAR DIFFUSER

LINEAR DIFFUSER

EXHAUST FAN

PIPE SPRINKLER

ACCESS DOOR

Lighting Fixture Schedule

Type Mark	Description
A1	LOW PROFILE LED RECESSED DOWNLIGHT
A2	LOW PROFILE LED RECESSED WALL WASHER
B1	LINEAR LED PENDANT
B1W	LINEAR LED PENDANT
B2	LINEAR LED PENDANT
C1	2' X 4' RECESSED LED TROFFER
D1	TRACK MOUNTED LED WALL WASHER
F1	LINEAR LED COVE LIGHT
G1	SUSPENDED LED CYLINDER
J1	LINEAR LED PENDANT (DIRECT/INDIRECT)
J2	LINEAR LED PENDANT (DIRECT/INDIRECT)
K1	RECESSED DOWNLIGHT
L1	SUSPENDED LED CYLINDER

ciee
 Council on International Educational Exchange
 300 Fore Street
 Portland, ME

Gensler
 One Beacon Street
 Third Floor
 Boston, MA 02108
 (617) 619-5700
 (617) 619-5701

Date & Issue Description	By	Check
05/16/16 ISSUED FOR PERMIT	ACH	IAQ GL
12/29/16 ISSUED FOR CONSTRUCTION	ACH	IAQ GL

Seal/Signature

Project Name
 CIEE HQ Renovations

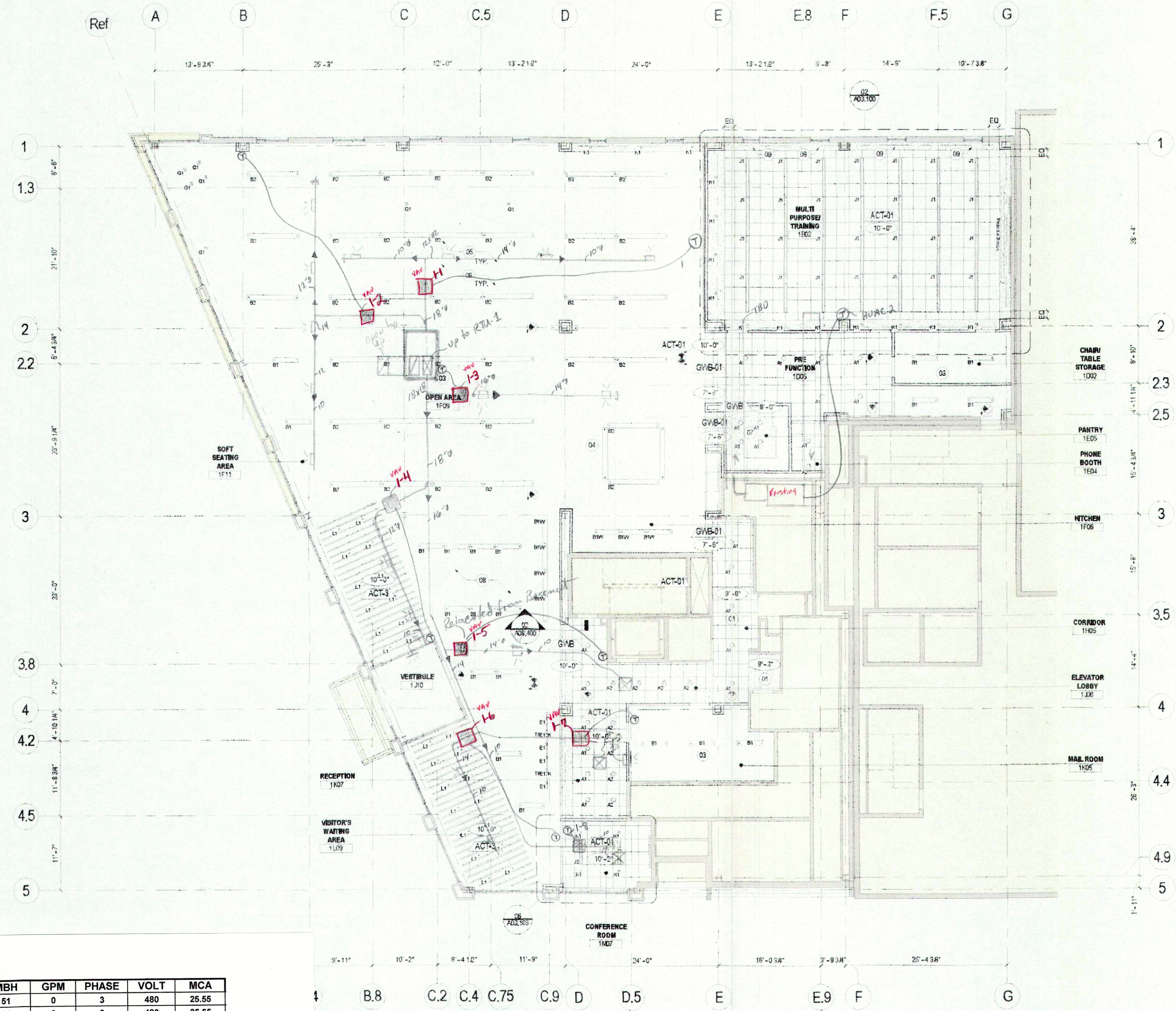
Project Number
 11,7096,000

Description
 REFLECTED CEILING PLAN - LEVEL 01

Scale
 0 2 4 8 16

A02.601

© 2016 Gensler



VAV'S

VAV	MFG	MODEL	MIN CFM	MAX CFM	OUTSIDE AIR	MBH	GPM	PHASE	VOLT	MCA
1-1	TRANE	VSEF1200S	325	1600	0	51	0	3	480	25.55
1-2	TRANE	VSEF1200S	325	1600	0	51	0	3	480	25.55
1-3	TRANE	VSEF1200S	325	1600	0	51	0	3	480	25.55
1-4	TRANE	VSEF800Q	150	600	0	18.78	0	1	277	26.82
1-6	TRANE	VSEF800P	125	500	0	15.37	0	1	277	21.18
1-7	TRANE	VSEF800P	125	500	0	15.37	0	1	277	21.18
1-8	TRANE	VSEF500P	75	250	0	8.54	0	1	277	12.06

01 REFLECTED CEILING PLAN - LEVEL 01
 SCALE: 1/8" = 1'-0"

\\gensler.ad\projects\RevitUserModels\20617\CIEE-HQ_Renovation_2015_Adam Harper.rvt