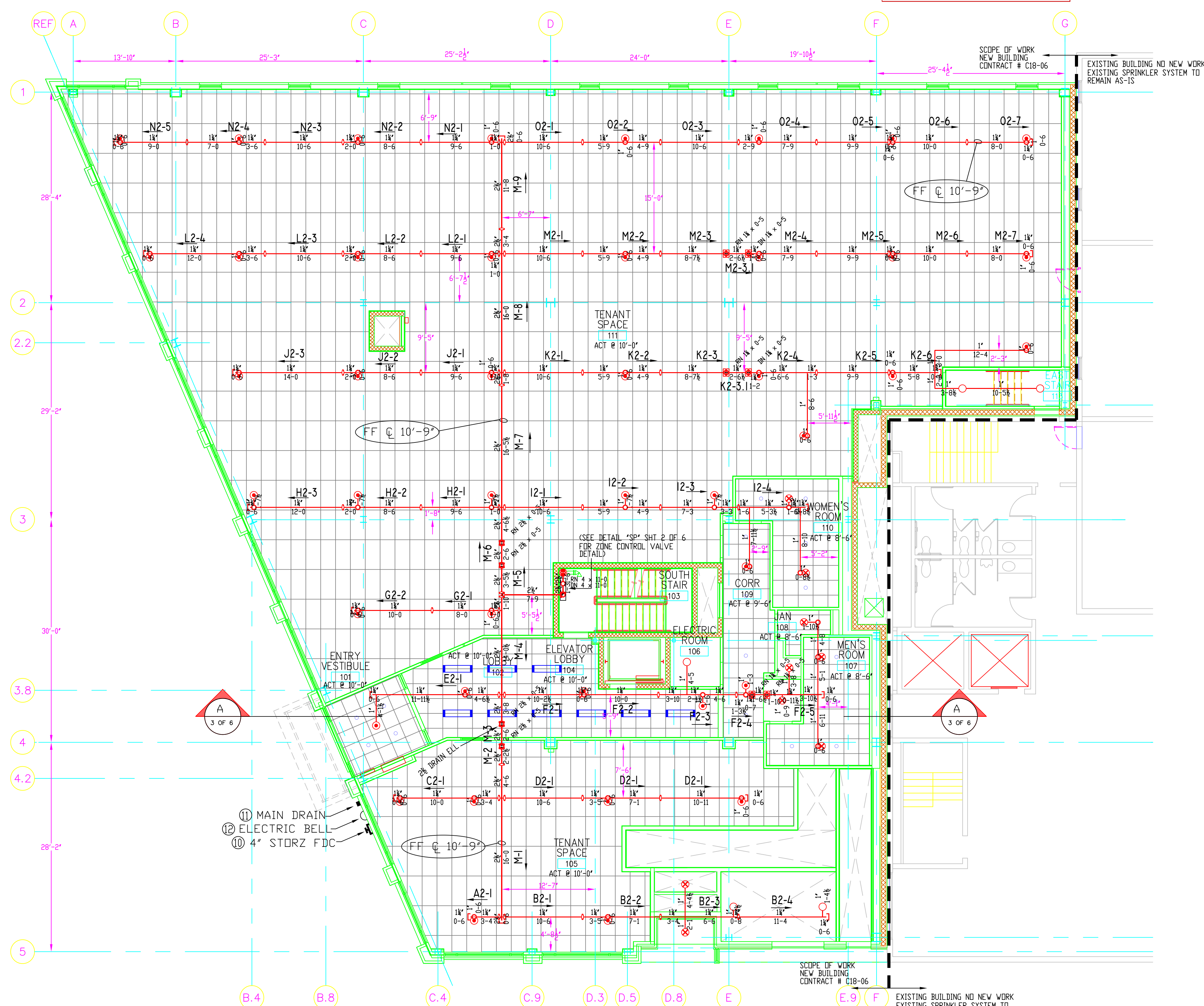


VICTAULIC MODEL "V3904 EXTENDED COVERAGE LIGHT HAZARD CONCEALED PENDENT"  
HEAD CHART FOR VICTAULIC MODEL "V3904 ECLH CONCEALED PENDENT" K-FACTOR=80 SIN # V3904

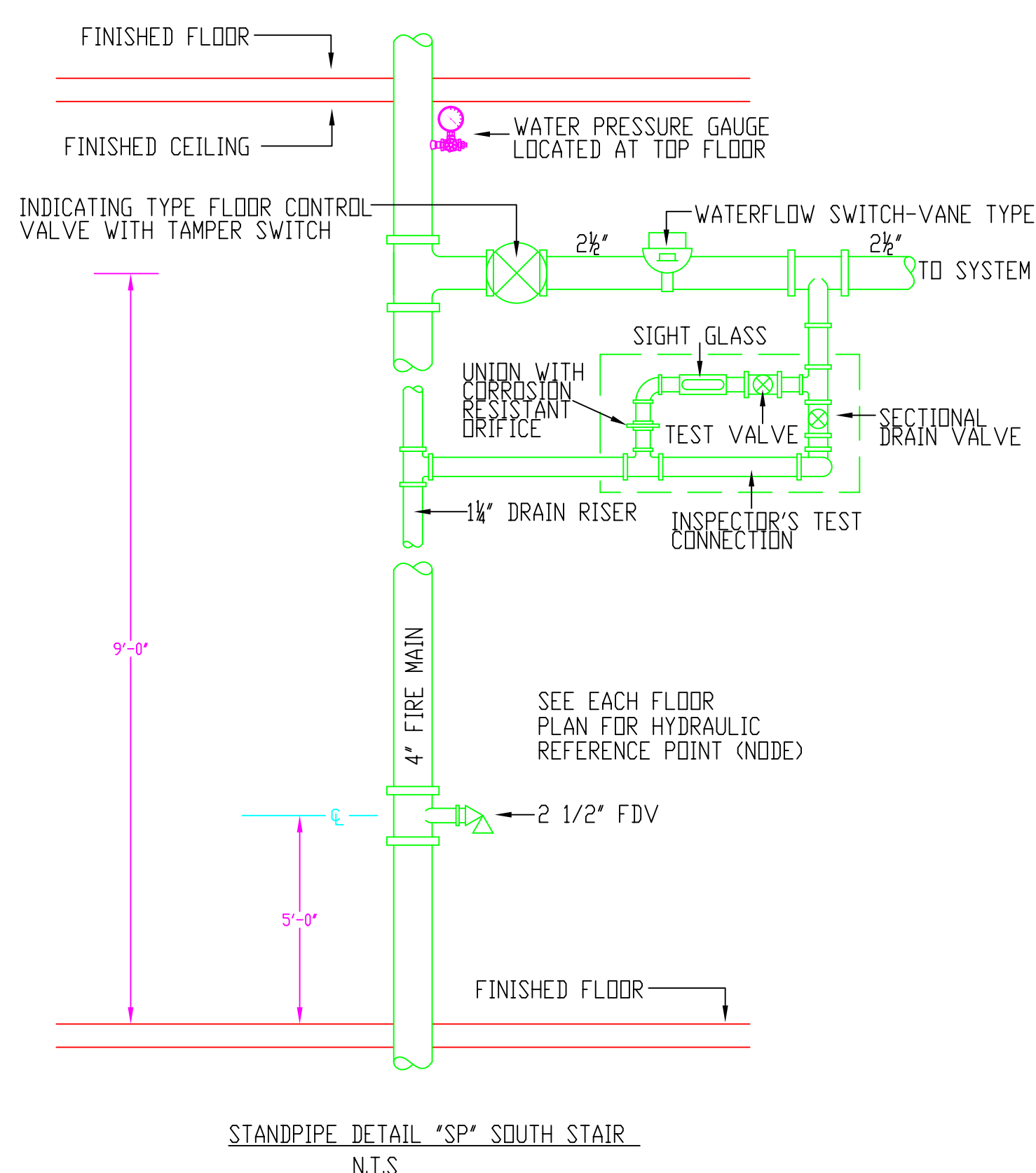
MAXIMUM COVERAGE AREA FT. x FT.	MAXIMUM SPACING FT.	FLOW RATE - GPM
16 x 16	8'	26
18 x 18	9'	32
20 x 20	10'	40

Design Area No. 2 - LIGHT  
Density .1 Area 1262  
Flow 282.22gpm @ 72.512 psi  
Includes 100 gpm hose allowance



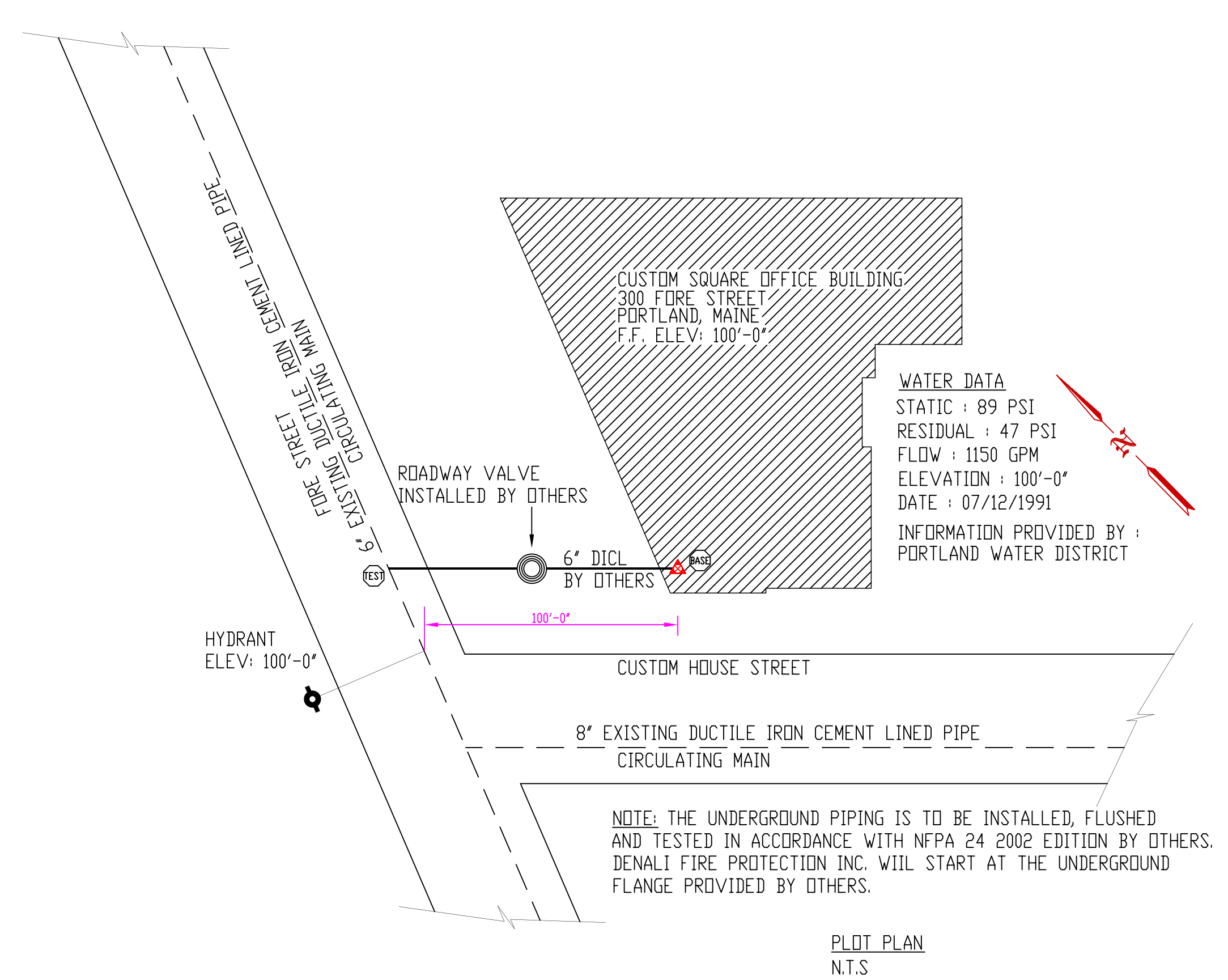
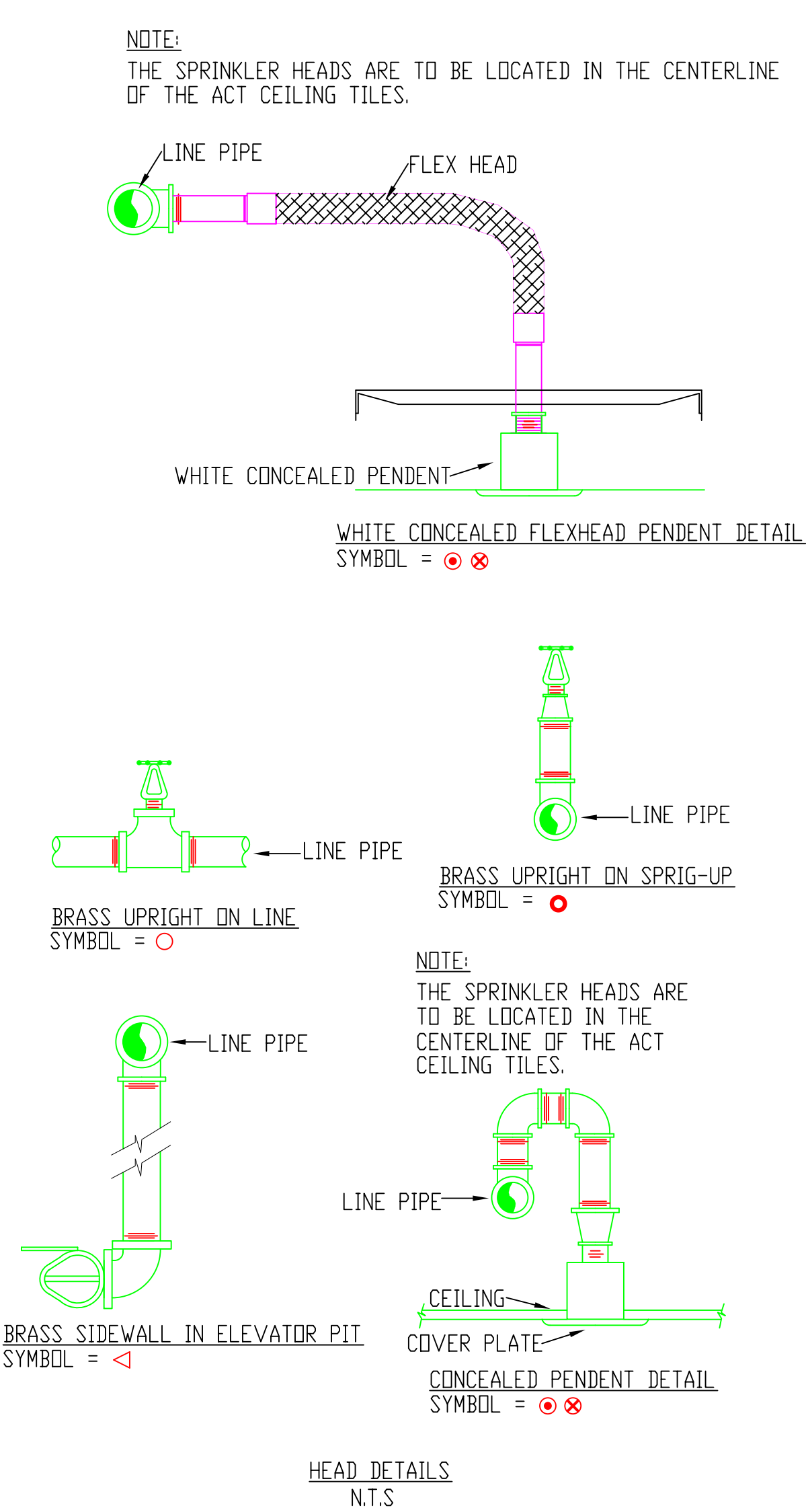
FIRST FLOOR  
FINISH FLOOR ELEVATION 110'-10 1/2"  
AREA PROTECTED 10,827 SQ. FT.

<p>VICTAULIC MODEL "V3904" WHITE CONCEALED PENDENT</p> <p>155 43 K-FACTOR = 8.0 SIN # "V3904" SYMBOL = ●</p>	<p>VICTAULIC MODEL "V2704" OR BRASS UPRIGHTS</p> <p>155 3 K-FACTOR = 5.6 SIN # "V2704" SYMBOL = ○</p>	<p>VICTAULIC MODEL "V3802" WHITE CONCEALED PENDENT</p> <p>155 7 K-FACTOR = 5.6 SIN # "V3802" SYMBOL = ⊗</p>
--	---	---

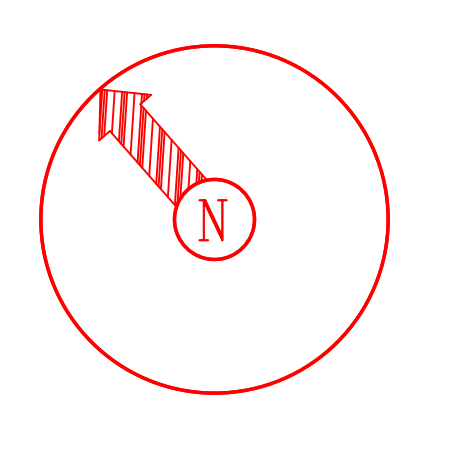


SPRINKLER HEAD SCHEDULE					
SPRINKLER TYPE	SYMBOL	TEMPERATURE RATING (°F.)	NOMINAL ORIFICE SIZE	QUANTITY THIS JOB	MANUFACTURER & MODEL
WHITE CONCEALED PENDENT	●	155°	1/2"	90	VICTAULIC V3904
BRASS UPRIGHT	○	155°	1/2"	19	VICTAULIC V2704 QR
WHITE CONCEALED PENDENT	⊗	155°	1/2"	41	VICTAULIC V3802 QR
BRASS UPRIGHTS	○	200°	1/2"	1	VICTAULIC V2704 QR
BRASS SIDEWALL	◁	200°	1/2"	1	VICTAULIC V2709
BRASS UPRIGHT ON SPRIG-UP	●	155°	1/2"	265	VICTAULIC V2704 QR

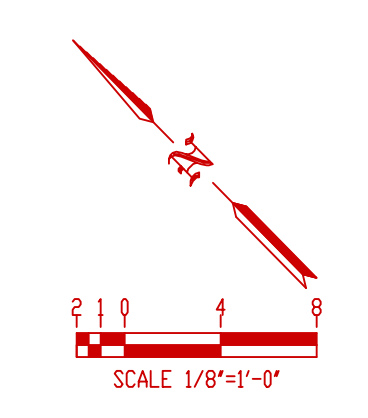
GENERAL SPRINKLER SYSTEM DATA	
1. BUILDING GENERAL CONTRACTOR:	WRIGHT-RYAN CONSTRUCTION INC. 10 DANFORTH STREET PORTLAND, MAINE 04101
2. BUILDING ADDRESS:	300 FORE STREET PORTLAND, MAINE
3. CONSTRUCTION:	STEEL / CONCRETE STRUCTURE
4. AREA PROTECTED BY SPRINKLER SYSTEM:	THE TOTAL AREA PROTECTED FOR THE SYSTEM IS 64,962' SQ. FT.
5. MAXIMUM SPRINKLER HEAD SPACING:	15' x 15'
6. MAXIMUM SQUARE FOOTAGE PER SPRINKLER HEAD:	225 SQ. FT.
7. SPRINKLER SYSTEM DESIGNER:	CKD NICET LEVEL III CERT # 091641
8. CONTRACTORS MAINE STATE LICENSE NUMBER:	309



AS-BUILT DRAWING  
SEPTEMBER 17, 2007



**DENALI**  
FIRE PROTECTION, INC.  
DESIGN INSTALLATION SERVICE  
270 TIGER HILL RD.  
OXFORD, MAINE 04270  
(207) 539-4226 FAX (207) 539-8544



- General Notes**
- All Pipe Locations are to be Field Measured Prior to Fabrication and Installation by Sprinkler Contractor.
  - All Dimensions Shown are Center to Center.
  - High Temperature Heads are to be Field Located Where Required.
  - All Pipes and Hangers are to be Installed per NFPA #13.
  - Hangers are to be U.L. Listed and P.M. Approved.

Symbol	Description	Number of Sprinklers	
		Total This Sheet	Total This Job
○	Hydraulic Reference Points		
[+ 16]	Elev. Below Top of Steel		
[+ 14]	Elev. Above Finished Floor		
[+ 10 20-4]	Elev. of Top of Steel		
⊕	Ceiling Height		
—	Denotes Hanger Location		
○	Rise up or down		

Drawing Title		NFPA 13 SYSTEM	
Contract No.	C18-06	Revisions:	Date:
Drawn By	CKD		
Scale	1/8"=1'-0"		
Date	11/29/06		
Approval By	RFM/PVD		

Job: CUSTOM HOUSE SQUARE OFFICE BLDG  
300 FORE STREET  
PORTLAND, MAINE  
Contractor: DENALI FIRE PROTECTION INC.  
270 TIGER HILL ROAD  
OXFORD, MAINE 04270

SHEET 2 OF 6