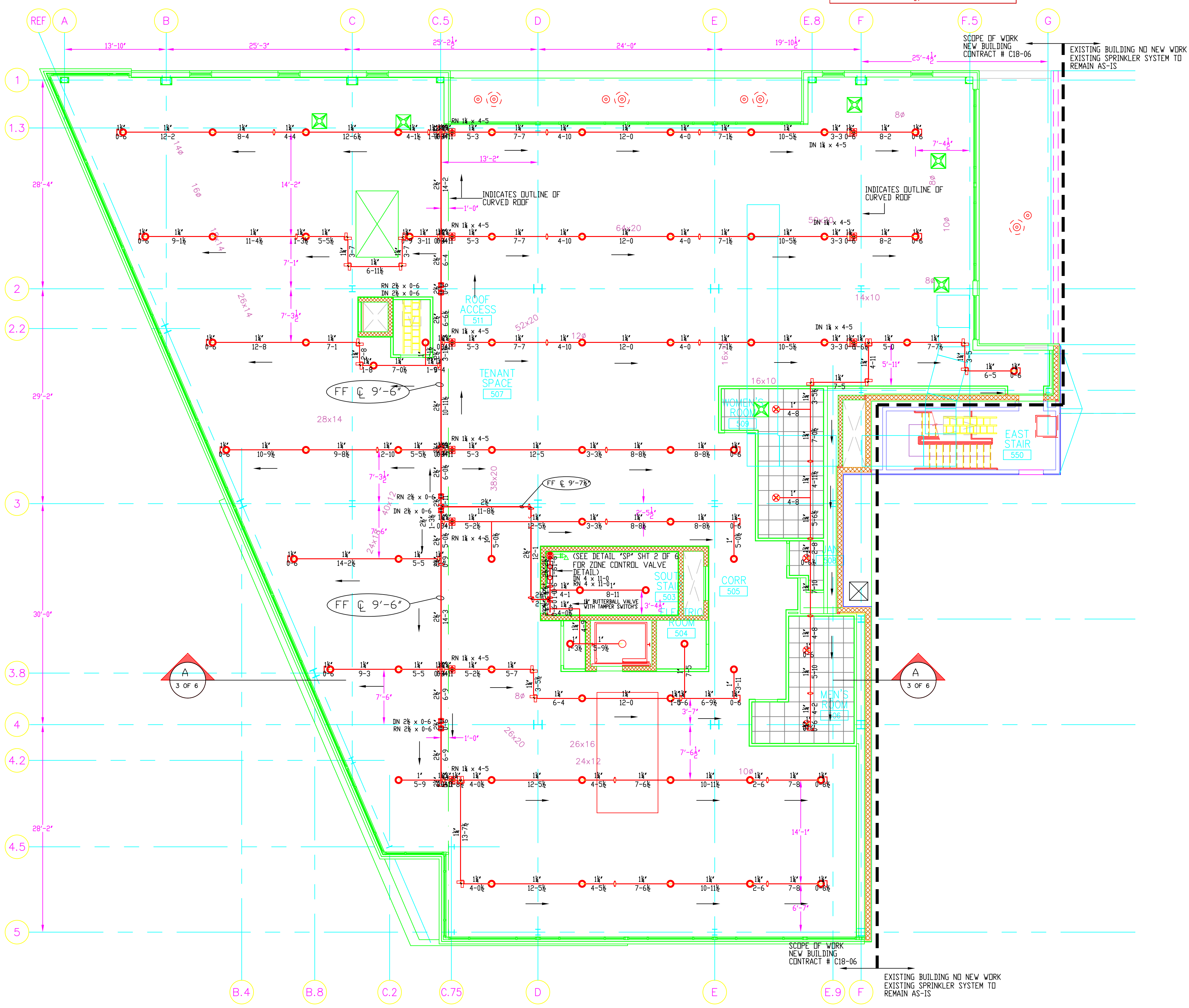


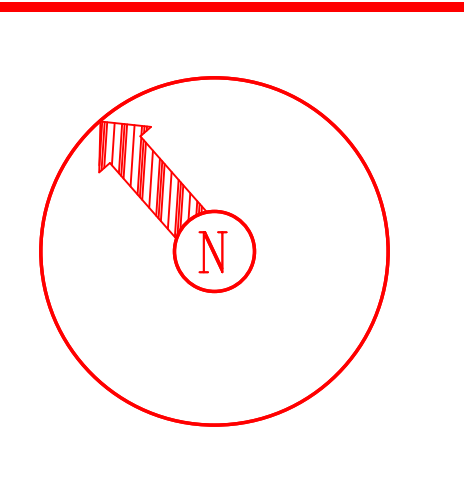
Design Area No. 1 - LIGHT
 Density .1 Area 1147
 Flow 245.106gpm @ 73.792 psi
 Includes 100 gpm Hose allowance



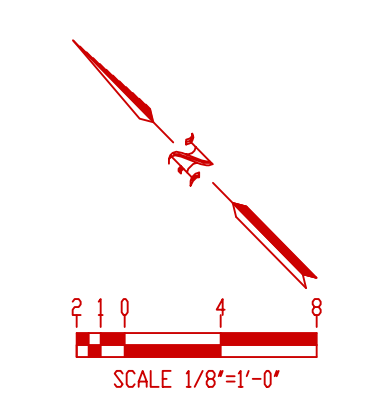
FIFTH FLOOR
 FINISH FLOOR ELEVATION: 156'-11"
 AREA PROTECTED: 10,827 SQ. FT.

- VICTAULIC MODEL "V2704" OR BRASS UPRIGHTS DN SPRIG-UPS
 K-FACTOR = 5.6
 SIN # "V2704"
 SYMBOL = ○
- VICTAULIC MODEL "V3802" WHITE CONCEALED PENDENT
 K-FACTOR = 5.6
 SIN # "V3802"
 SYMBOL = *
- VICTAULIC MODEL "V2704" OR BRASS UPRIGHTS
 K-FACTOR = 5.6
 SIN # "V2704"
 SYMBOL = ○

AS-BUILT DRAWING
 SEPTEMBER 17, 2007



DENALI
 FIRE PROTECTION, INC.
 DESIGN INSTALLATION SERVICE
 270 TIGER HILL RD.
 OXFORD, MAINE 04270
 (207) 539-4226 FAX (207) 539-8544



- General Notes
- All Pipe Locations are to be Field Measured Prior to Fabrication and Installation by Sprinkler Contractor.
 - All Dimensions Shown are Center to Center.
 - High Temperature Heads are to be Field Located Where Required.
 - All Pipes and Hangers are to be Installed per NFPA #13.
 - Hangers are to be U.L. Listed and P.M. Approved.

Symbol	Description	Number of Sprinklers	
		Total This Sheet	Total This Job
○	Hydraulic Reference Points		
[+ ft]	Elev. Below Top of Steel		
[+ ft]	Elev. Above Finished Floor		
+ (ft)	Elev. of Top of Steel		
⊕	Ceiling Height		
⊖	Denotes Hanger Location		
○	Rise up or down		

Drawing Title		NFFA 13 SYSTEM	
Contract No.	C18-06	Revisions:	Date:
Drawn By	CKD	REVISIONS	09/09/07
Scale	1/8"=1'-0"		
Date	11/29/06		
Approval By	RFM/PPD		

Job: CUSTOM HOUSE SQUARE OFFICE BLDG
 300 FORE STREET
 PORTLAND, MAINE
 Contractor: DENALI FIRE PROTECTION INC.
 270 TIGER HILL ROAD
 OXFORD, MAINE 04270

SHEET 6 OF 6