

ARCHITECT:

CONTRACTOR:

- LEGEND:**
- Riser Up
  - Riser Down
  - Steel Pipe (New)
  - - - Steel Pipe (Existing)
  - ▲ Wet System Riser
  - Hydraulic Calc. Point
  - x-x Pipe Elevation A.F.F.

**DESIGN NOTES:**

\*ALL PIPING 1 1/2" AND LARGER TO BE SCHEDULE 10 STEEL W/ GROOVED FITTING.  
 \*ALL PIPING 1 1/4" AND SMALLER TO BE SCHEDULE 40 STEEL WITH THREADED OR GROOVED FITTING.  
 \*POSITION, LOCATION, SPACING, AND USE OF SPRINKLERS AND HANGERS SHALL BE IN ACCORDANCE WITH NFPA 13 2010 ed.  
 \*HYDRAULIC CALCULATION PROCEDURES HAVE BEEN DONE IN ACCORDANCE WITH NFPA 13 2010 ed. (SEE PLANS FOR LOCATION OF REMOTE AREAS, HYDRAULIC REFERENCE POINTS, AND SYSTEM DEMANDS)  
 \*ALL ELECTRICAL WORK TO BE DONE BY OTHERS.  
 \*DIMENSIONS AND LOCATIONS GIVEN FOR SPRINKLER HEADS AND PIPE MAY VARY TO ACCOMMODATE ACTUAL FIELD CONDITIONS.  
 \*OWNER TO PROVIDE SUFFICIENT HEAT TO PREVENT FREEZING IN WATER FILLED SPRINKLER PIPE AND EQUIPMENT.  
 \*OTHER TRADES TO COORDINATE THEIR WORK WITH SPRINKLER CONTRACTOR.  
 \*ALL NEWLY INSTALLED SPRINKLER HEADS ARE TO BE QUICK RESPONSE U.N.O.  
 \*OWNER IS RESPONSIBLE FOR MAINTAINING THE SPRINKLER SYSTEMS IN ACCORDANCE WITH THE CURRENT EDITION OF NFPA 25.  
 \*INSPECTIONS TESTING AND MAINTENANCE OF WATER BASED FIRE PROTECTION SYSTEMS AND/OR ALL APPLICABLE FEDERAL, STATE, AND LOCAL LAWS, CODES AND ORDINANCES.

- EXISTING SPRINKLER HEAD (TO REMAIN)  
QUANTITY: 60
- GLOBE\* MODEL GL5601  
46 / 155"  
K=5.6
- 1/2" WHITE PENDENT  
(196 SQ. FT. SPACING - LIGHT)

\* OR APPROVED EQUAL

TOTAL HEADS ON SHEET: 106

SCALE: 3/16" = 1'-0"

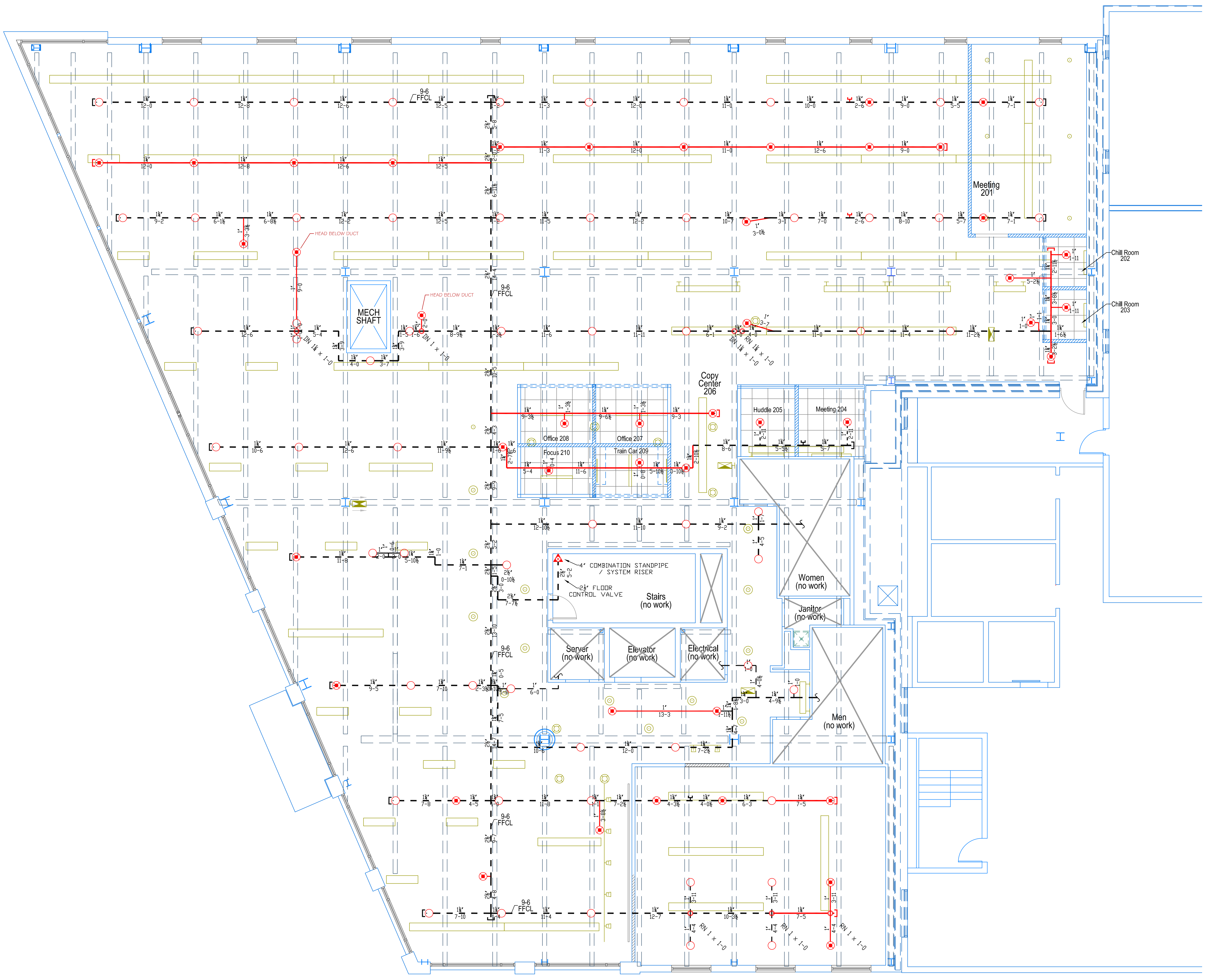
DATE: DECEMBER 15, 2015

DESIGNER: JEREMY A. FOSS  
MAINE RMS #808  
NICET LEVEL III CERT. #126801  
CHECKED BY: E. POULIN (RMS# 515)  
NICET LEVEL IV CERT. # 108534

LOCATION:  
300 FORE STREET  
PORTLAND, ME

DRAWING TITLE:  
**CIEE  
RENOVATION  
(SECOND FLOOR PLAN)**  
FIRE PROTECTION PLAN  
(NFPA 13 2010 ed.)

DRAWING NO.:  
**FP-1.1**



**SECOND FLOOR PLAN**  
SCALE: 3/16" = 1'-0"