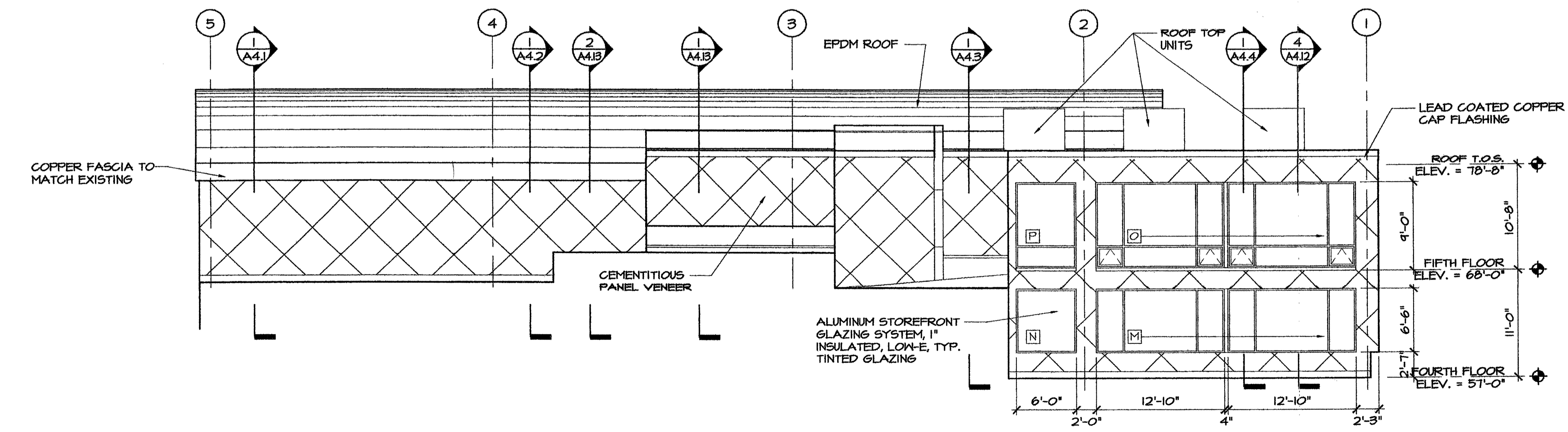
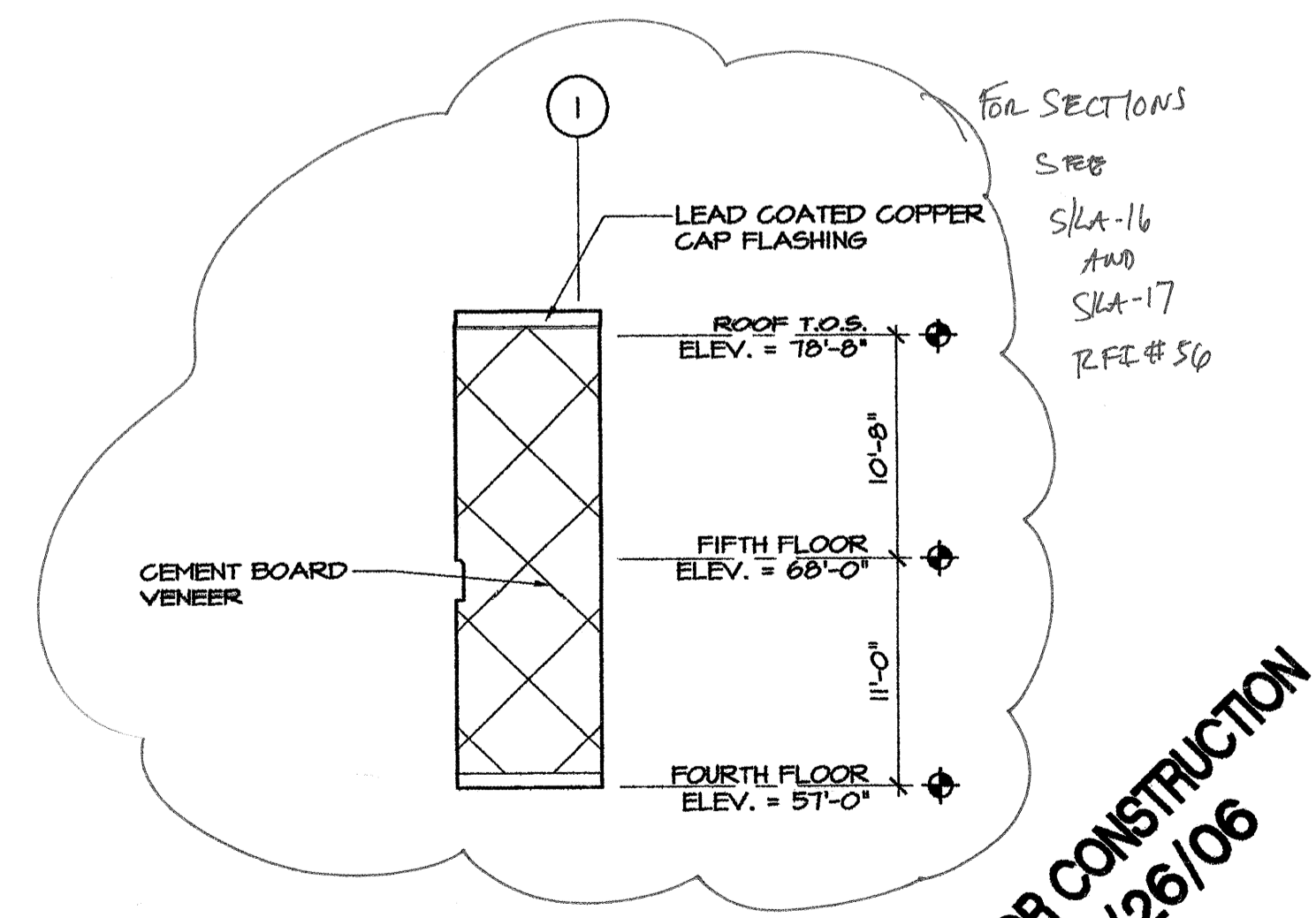


1 NORTH ELEVATION
SCALE: 1/8" = 1'-0"

- GENERAL NOTES**
1. ALL INDICATIONS AND NOTATIONS ON THE DRAWINGS APPLYING TO ONE AREA, COMPONENT OR CONDITION SHOWN APPLY TO ALL OTHER SIMILAR AREAS, COMPONENTS UNLESS CLEARLY INDICATED OTHERWISE.
 2. REFER TO SHEET A6.1 FOR THE WINDOW SCHEDULE
 3. THE FINISHED FIRST FLOOR ELEVATION IS NOTED AS 22'-7 1/2"
 4. REFER TO WALL SECTIONS & PLAN DETAILS FOR THE LOCATION AND SIZE OF THE PRE-CAST CONCRETE PROJECTIONS



2 PARTIAL EAST ELEV. @ 4TH & 5TH FLOORS
SCALE: 1/8" = 1'-0"



3 PARTIAL EAST ELEV. @ 4TH & 5TH FLOORS
SCALE: 1/8" = 1'-0"

ISSUE 02/26/2006: ISSUED FOR PRICING

CUSTOM HOUSE SQUARE
300 FORE STREET
PORTLAND, MAINE
EXTERIOR ELEVATIONS

PROJECT ARCHITECT: MW
DRAWN BY: SO, BR
PROJECT #: 300506

A3.2

NOT FOR CONSTRUCTION
05/26/06