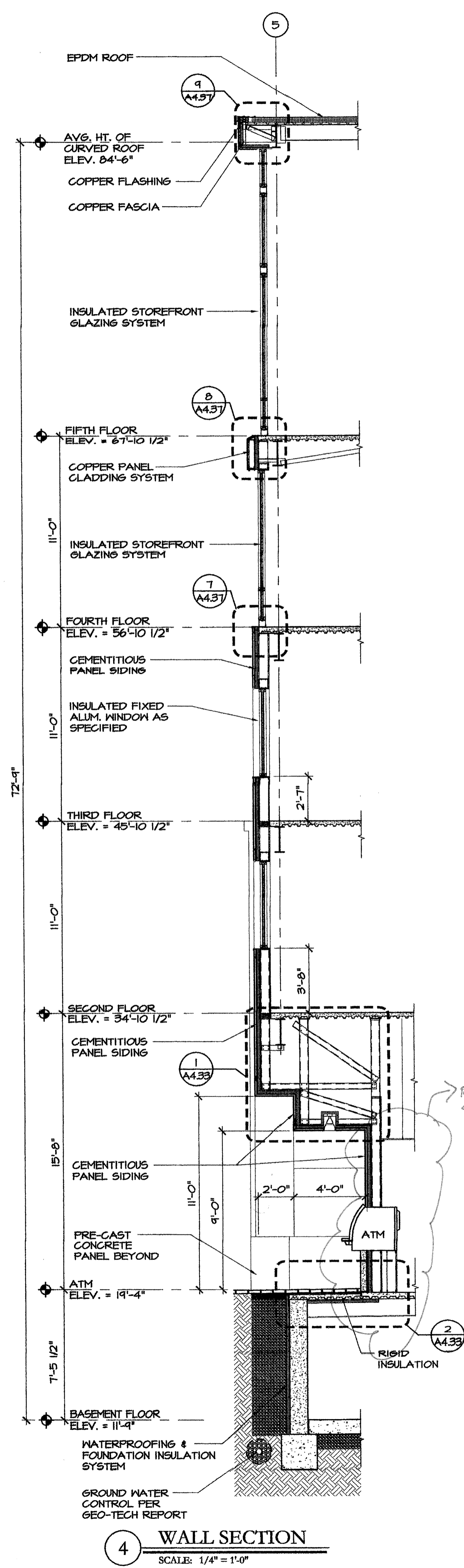
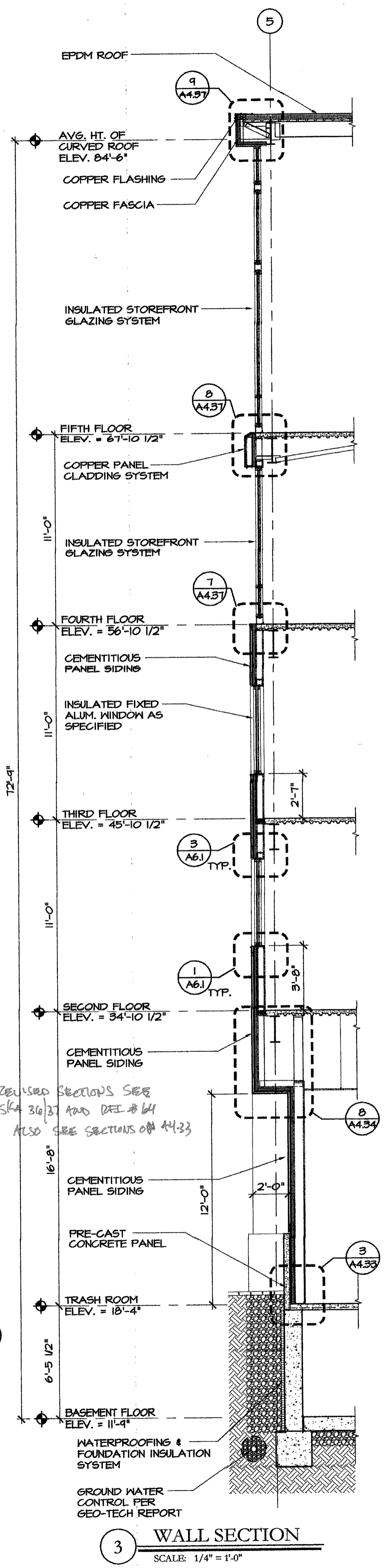


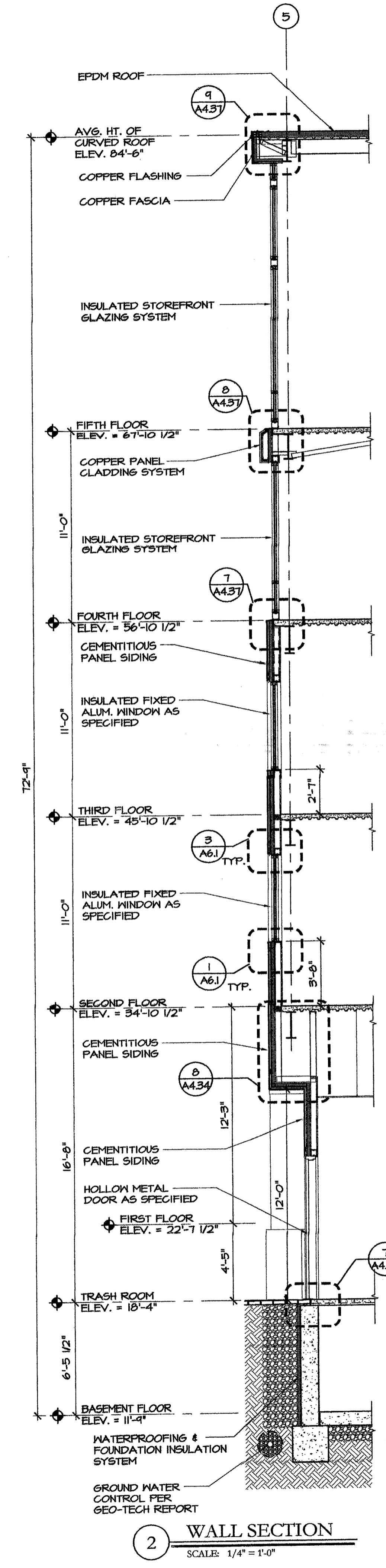
5 WALL SECTION
SCALE: 1/4" = 1'-0"



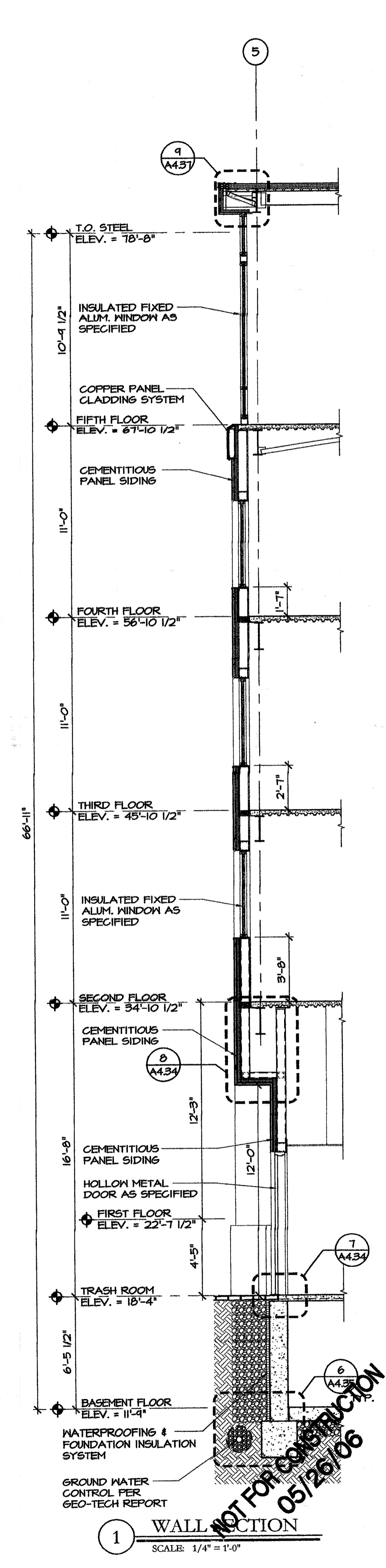
4 WALL SECTION
SCALE: 1/4" = 1'-0"



3 WALL SECTION
SCALE: 1/4" = 1'-0"



2 WALL SECTION
SCALE: 1/4" = 1'-0"



1 WALL SECTION
SCALE: 1/4" = 1'-0"

REVISED SECTIONS SEE SKA 31013 AND DET # 64 ALSO SEE SECTIONS ON A4.33

NOT FOR CONSTRUCTION
05/26/06