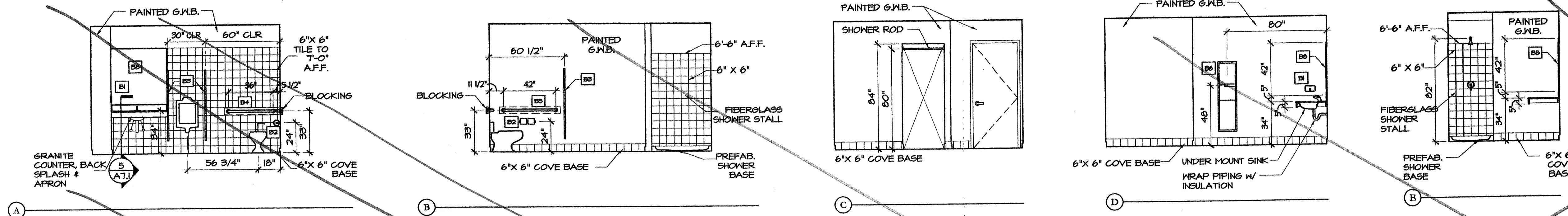
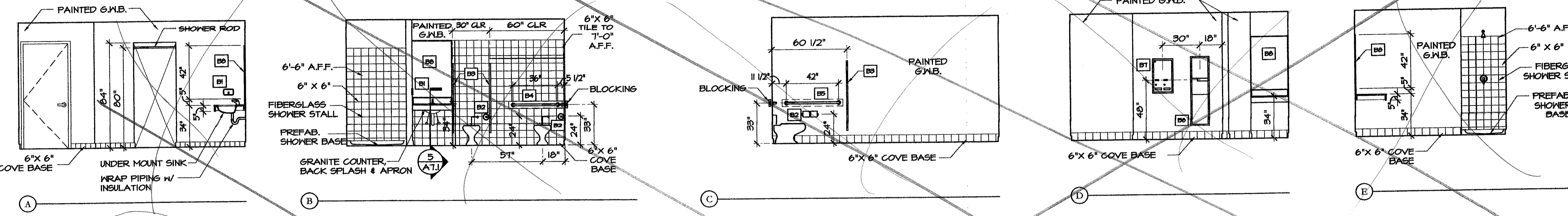


someil - Mod. 01 Jun. 2006 - 12:45pm

G:\Prod\Year2005\300506_Custom_House_Square\DWG\C506A7.1.dwg

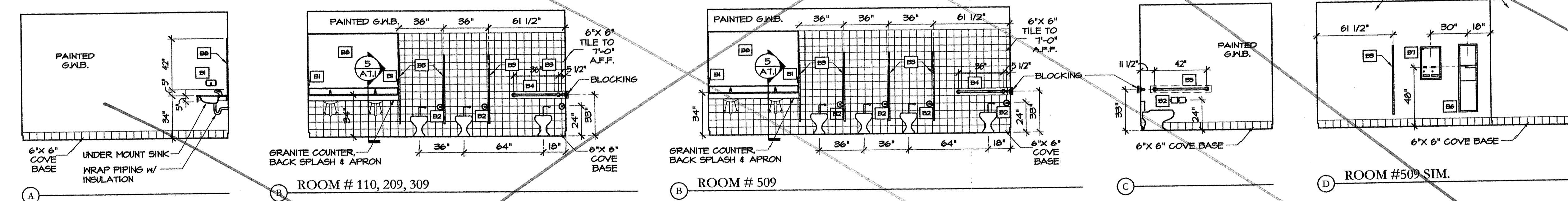


1 MEN'S ROOM ELEVATION - ROOM #013
SCALE: 1/4" = 1'-0"

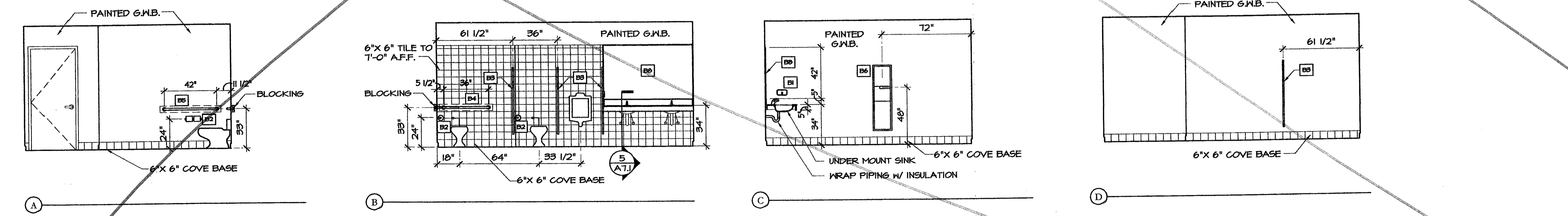


2 WOMEN'S ROOM ELEVATION - ROOM #014
SCALE: 1/4" = 1'-0"

REVERSED SEE REF #92 AND PLANS FOR CONNECT LAYOUTS



3 WOMEN'S ROOM ELEVATION - ROOM #110, 209, 309, 509
SCALE: 1/4" = 1'-0"

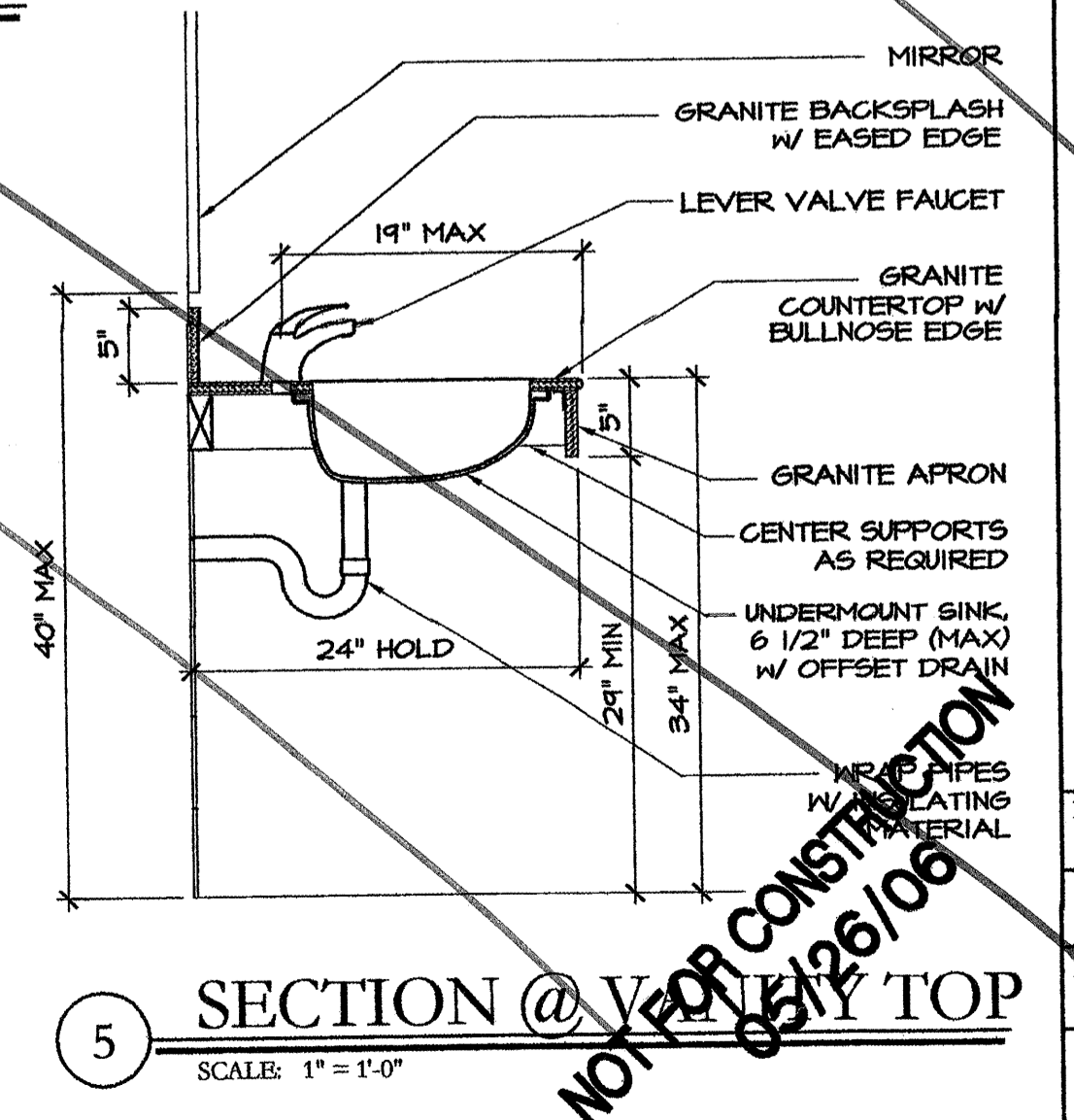


4 MEN'S ROOM ELEVATION - ROOM #107, 206, 306, 506
SCALE: 1/4" = 1'-0"

TOILET ACCESSORY SCHEDULE	
ITEM #	DESCRIPTION
B1	SOAP DISPENSER
B2	TOILET TISSUE HOLDER - 2 ROLL
B3	TOILET PARTITION
B4	36" GRAB BAR
B5	42" GRAB BAR
B6	SURFACE MOUNTED PAPER TOWEL DISPENSER & TRASH RECEPTACLE
B7	SURFACE MOUNTED SANITARY NAPKIN DISPENSER
B8	FIXED MIRROR

- NOTES
- PROVIDE WOOD BLOCKING OR OTHER SOLID ATTACHMENT MATERIAL BEHIND GYPSUM BOARD PARTITIONS FOR ATTACHMENT OF ALL FIXTURES, FITTINGS AND ACCESSORIES
 - GRAB BARS MUST BE ABLE TO RESIST A FULL FORCE OF 350 LBS. EXERTED AT ANY POINT IN ANY DIRECTION
 - ALL MIRRORS TO BE SUPPORTED WITH A CONTINUOUS CHROME FULL WIDTH J-CHEMEL FASTENED TO WALL ABOVE BACKSLASH
 - REFER TO REFLECTED CEILING PLANS FOR ALL CEILING MATERIALS AND CEILING HEIGHTS
 - LAVATORY FAUCET CONTROLS TO HAVE HOT AND COLD DESIGNATIONS PERMANENTLY AFFIXED TO THEM
 - SEE SPECIFICATIONS FOR APPROVED MANUFACTURERS AND MODEL NUMBERS OF ALL TOILET/BATH ACCESSORIES

COMPLETELY CHANGED
SEE RFI'S #60/61 AND
SKETCHES SKA19 -> SKA23



5 SECTION @ VANITY TOP
SCALE: 1" = 1'-0"

PRO CON
INCORPORATED
ARCHITECTURE
Design and Construction Management
A. Sheehan Company
P.O. Box 440, Portland, Maine 04108
603.875.2200
603.875.2200

CUSTOM HOUSE SQUARE
300 FORE STREET
PORTLAND, MAINE
INTERIOR ELEVATIONS

PROJECT ARCHITECT:
MW
DRAWN BY:
SV, SO
PROJECT #:
300506

A7.1