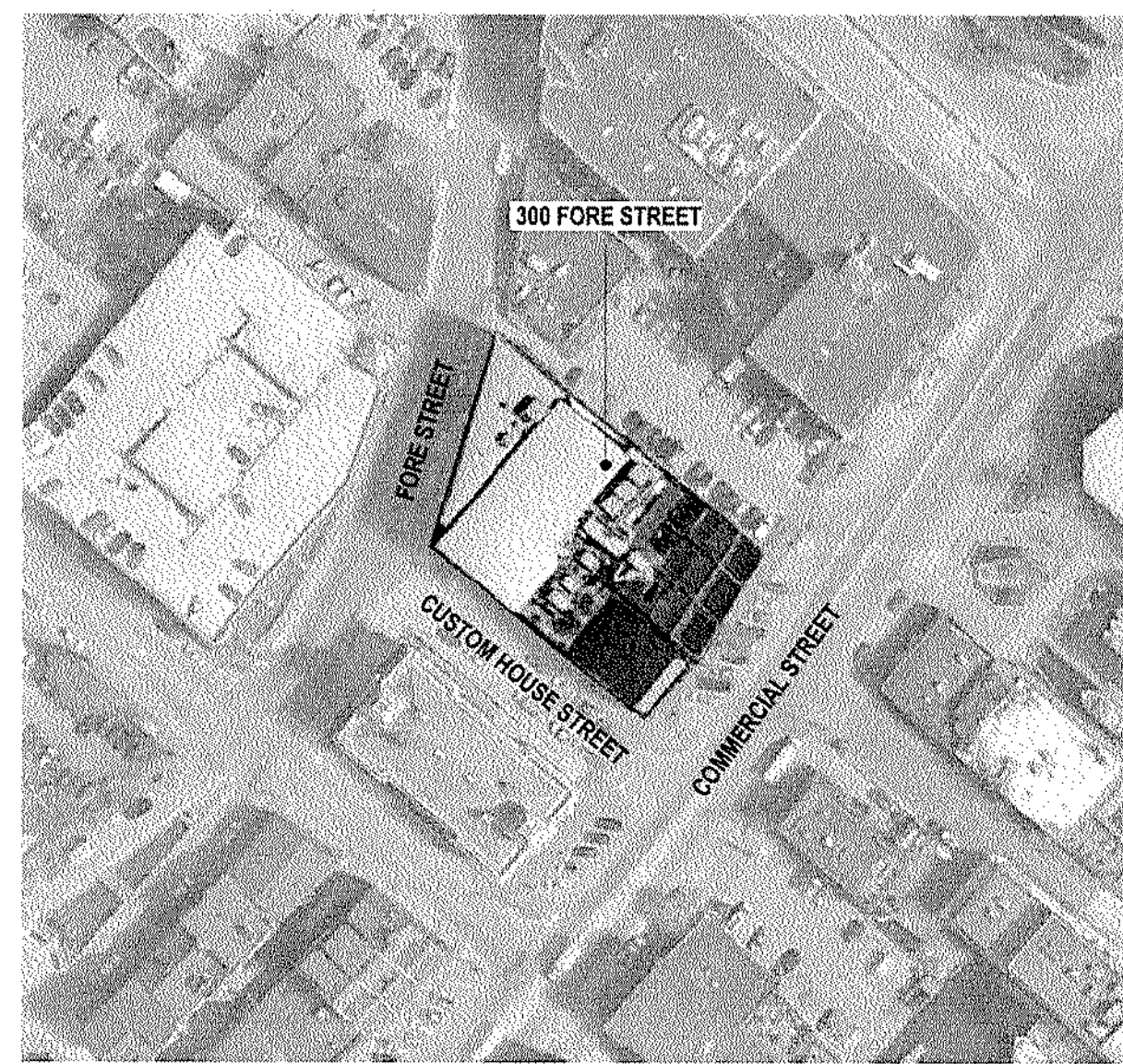


VICINITY MAP



LOCATION MAP



PROJECT INFORMATION

BUILDING ADDRESS:	300 FORE STREET, PORTLAND, ME
BUILDING CODES:	MAINE UNIFORM BUILDING AND ENERGY CODE, WHICH CONSISTS OF THE FOLLOWING: 2009 INTERNATIONAL BUILDING CODE (IBC) 2009 INTERNATIONAL EXISTING BUILDING CODE (IEBC) 2009 INTERNATIONAL ENERGY CONSERVATION CODE (IECC) 2009 NFPA 101 LIFE SAFETY CODE THE AMERICAN SOCIETY OF HEATING, REFRIGERATING, AND AIR CONDITIONING ENGINEERS (ASHRAE) STANDARDS: 62.1 - 2007 (VENTILATION FOR ACCEPTABLE INDOOR AIR QUALITY) 62.2 - 2007 (VENTILATION AND ACCEPTABLE INDOOR AIR QUALITY IN LOW-RISE RESIDENTIAL BUILDINGS) 90.1 - 2007 (ENERGY STANDARD FOR BUILDINGS EXCEPT LOW-RISE RESIDENTIAL)
PROJECT SUMMARY:	THE CIEE HQ RENOVATION PROJECT IS AN INTERIOR RENOVATION / TENANT IMPROVEMENT TO THE EXISTING CIEE OFFICES IN PORTLAND, ME. THE SCOPE INCLUDES BUT IS NOT LIMITED TO UPDATING AND EXPANDING THE EMPLOYEE FITNESS AREA AND ASSOCIATED RESTROOMS ON THE LOWER LEVEL, DEVELOPMENT OF AN OPEN LOBBY ENTRY AND EMPLOYEE AMMENITY SPACE(S) ON THE GROUND LEVEL.
USE GROUP:	B - BUSINESS; E EXERCISE; S - STORAGE
CONSTRUCTION TYPE:	2B
BUILDING HEIGHT:	65' (NON HIGHRISE)
BUILDING AREA: (EXISTING WHOLE BUILDING)	66,185 GSF
PROJECT / SCOPE AREA:	17,320 GSF
FIRE PROTECTION:	FULLY SPRINKLERED PER NFPA 13
MISC:	MECHANICAL, ELECTRICAL, PLUMBING, FIRE PROTECTION AND STRUCTURAL TO BE DESIGN / BUILD

ASBESTOS NOTE

IN THE EVENT OF ASBESTOS OR OTHER TOXIC SUBSTANCE EXPOSURE OR THE SUBSTANTIAL RISK THEREOF, CLIENT WILL HAVE THE DUTY TO INFORM ARCHITECT OF SUCH RISKS KNOWN OR REASONABLY KNOWABLE TO CLIENT. IF ASBESTOS OR ANY OTHER TOXIC SUBSTANCE, OR RISKS TO EXPOSURE THEREOF IS DISCOVERED BY ARCHITECT DURING WORK ON THE PROJECT, ARCHITECT SHALL, IN ITS SOLE DISCRETION, HAVE THE RIGHT TO SUSPEND WORK ON THE PROJECT. CLIENT SHALL HAVE THE DUTY PROMPTLY TO RETAIN A QUALIFIED EXPERT SAFELY TO RENDER OR SUPERVISE THE REMOVAL OF SUCH ASBESTOS OR OTHER TOXIC SUBSTANCE. CLIENT SHALL INDEMNIFY AND HOLD ARCHITECT, ITS AFFILIATES AND SUB-CONTRACTORS, AND THEIR OFFICERS, AGENTS AND EMPLOYEES HARMLESS FROM ANY AND ALL LIABILITY ON PART OF OR DAMAGE TO SUCH ENTITIES OR PERSONS, INCLUDING THE COST OF LEGAL FEES AND EXPENSES, AS SUCH FEES AND EXPENSES ARE INCURRED, WHICH MAY RESULT FROM ASBESTOS OR OTHER TOXIC SUBSTANCE EXPOSURE ON THE PROJECT.

DRAWING INDEX

NEW ISSUE REVISED ISSUE ISSUED WITH NO CHANGES REVISED - NOT ISSUED / SK ISSUED

Sheet Number	Sheet Name	ISSUED FOR PERMIT - 09.16.16	COMMENTS
A09.200	TYPICAL PARTITION DETAILS		
A00.000	COVER SHEET		
A00.001	PROJECT INFORMATION - INDEX		
A00.100	LIFE SAFETY PLAN - BASEMENT LEVEL		
A00.101	LIFE SAFETY PLAN - LEVEL 01		
A00.010	GENERAL NOTES		
A00.011	GRAPHIC SYMBOLS		
A00.020	TYPICAL ADA INFORMATION		
A01.000	DEMOLITION PLAN - BASEMENT LEVEL		
A01.001	DEMOLITION PLAN - LEVEL 01		
A02.200	CONSTRUCTION PLAN - BASEMENT LEVEL		
A02.201	CONSTRUCTION PLAN - LEVEL 01		
A02.600	REFLECTED CEILING PLAN - BASEMENT LEVEL		
A02.601	REFLECTED CEILING PLAN - LEVEL 01		
A02.700	FINISH PLAN - BASEMENT LEVEL		
A02.701	FINISH PLAN - LEVEL 01		
A02.800	FURNITURE PLAN - BASEMENT LEVEL		
A02.801	FURNITURE PLAN - LEVEL 01		
A03.000	ENLARGED PLANS		
A03.010	ENLARGED PLANS		
A03.102	ENLARGED PLANS		
A07.201	INTERIOR ELEVATIONS		
A08.400	TYPICAL CEILING DETAILS		
A08.500	TYPICAL MILLWORK DETAILS		
A08.520	KITCHEN BAR DETAILS		
A09.100	PARTITION TYPES AND TYPICAL DETAILS		
A10.100	DOOR AND FRAME TYPES		

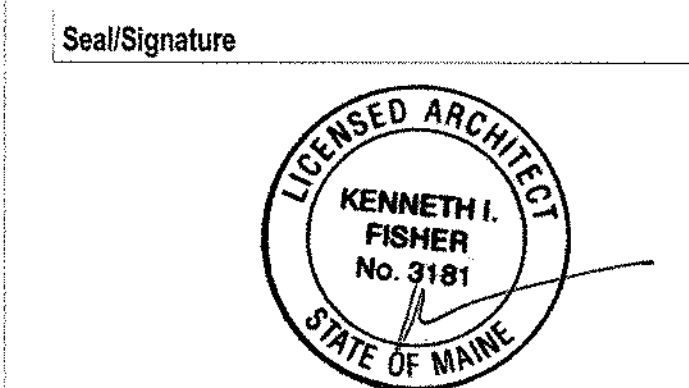


Council on International Educational Exchange
300 Fore Street
Portland, ME



One Beacon Street
Third Floor
Boston MA 02108
(617) 619-5700
(617) 619-5701

Date & Issue Description	By	Check
09/16/16	ISSUED FOR PERMIT	



Project Name
CIEE HQ Renovations

Project Number
11.7086.000

Description
PROJECT INFORMATION - INDEX

Scale
12" = 1'-0"

A00.001