
CIEE - Means of Egress

2 messages

John Burrell <jburrell@pcconstruction.com>
To: "jmb@portlandmaine.gov" <jmb@portlandmaine.gov>
Cc: Jared Ballard <jballard@pcconstruction.com>

Wed, Jan 11, 2017 at 10:43 AM

Jeanie,

Per your conversation with Jared Ballard and I yesterday, Jared visited the building and took the attached pictures.

The drawings submitted show the door leading out of the stairway swinging in the wrong direction. It does actually swing out of the stairway along a means of egress (See image 0002). The corridor that this door leads to is a common corridor between the CIEE space and the adjacent tenant, the Old Port Sea Grill. This corridor does lead to an exit door onto the side street, Custom House Street (See Image 004).

Gensler has shown a means of egress from CIEE to be down the stairs and through the door shown in image 3, out into a 2 hour rated corridor in the basement (Jared confirmed this yesterday), that leads to a separate exit onto Custom House Street via the stairs show in image 001.

We hope this answers your questions.

Please let us know if you need anything else.

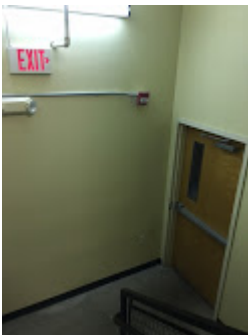
Have a great day.

John Burrell, CPE
Estimator/Construction Coordinator
PC Construction Company
131 Presumpscot Street, Portland, ME 04103
[207.874.2323](tel:207.874.2323) x1308 T | [207.874.2727](tel:207.874.2727) F | [207.615.8729](tel:207.615.8729) C
CONNECT WITH US:
pcconstruction.com | Blog | Twitter | LinkedIn | YouTube
Do or do not, there is no try!

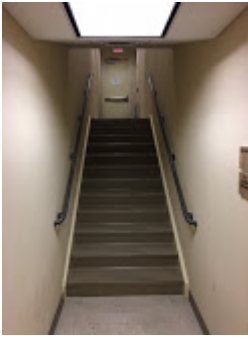
-----Original Message-----

From: Jared Ballard
Sent: Wednesday, January 11, 2017 7:14 AM
To: John Burrell <jburrell@pcconstruction.com>
Subject:

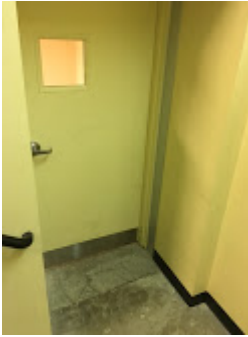
4 attachments



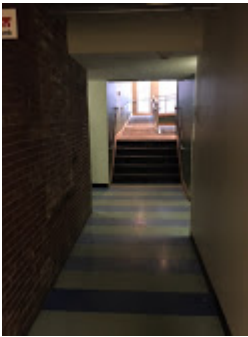
IMG_0002.JPG
55K



IMG_0001.JPG
77K



IMG_0003.JPG
75K



IMG_0004.JPG
80K

Jeanie Bourke <jmb@portlandmaine.gov>
To: John Burrell <jburrell@pcconstruction.com>
Cc: Jared Ballard <jballard@pcconstruction.com>

Wed, Jan 11, 2017 at 2:21 PM

Hi John,

Thank you for the photos, Jared and I discussed the details this morning. I will be adding a condition of approval to the permit for the exit signage at the basement level in the stair enclosure from the CIEE space to direct travel to the left door as this is a continuous 2hr rated exit passageway. It is unclear if the common corridor to the adjacent tenant space beyond the right exit door is rated continuously to the exit discharge. This travel protection is required as only 50% of the exits can pass through an unrated lobby which is at the Fore St. level.

I will be approving this permit shortly and it will be sent via email once it has been prepared for issuance.

Best,
Jeanie

Jeanie Bourke
Code Enforcement Officer/Plan Reviewer

City of Portland
Permitting and Inspections Department
389 Congress St. Rm 315
Portland, ME 04101
jmb@portlandmaine.gov
(207)874-8715

1/11/2017

City of Portland Mail - CIEE - Means of Egress

[Quoted text hidden]