

**SHEET NOTES**

- 01 SCHEDULED OR EXISTING PARTITION.
- 02 SCHEDULED CEILING.
- 03 SCHEDULED LIGHT FIXTURE, REFER TO REFLECTED CEILING PLAN.
- 05 SCHEDULED FINISH FLOOR, REFER TO FINISH PLAN FOR MORE INFORMATION.
- 10 SCHEDULED FAUCET SET.
- 11 SCHEDULED SINK.
- 12 PIPE INSULATION.
- 13 EXISTING CONCRETE SLAB.
- 14 SCHEDULED OUTLET DEVICE(S).
- 19 PROVIDE REVEAL IN DOOR PANEL TO ALIGN WITH ADJACENT CABINET DRAWER.
- 20 PROVIDE RUBBERMAID LARGE WASTEBASKET, MODEL #2957; COLOR: TBD; SIZE OF UNIT: 15 1/4" D X 11" W X 19 7/8" H.
- 22 PROVIDE FINISHED CUTOUT FOR CABLING MANAGEMENT.
- 24 PROVIDE (X) SHELVES WITHIN CLOSET.
- 25 ANCHOR BOLT LEGS TO FLOOR.
- 27 2" Ø S.S. LEGS.
- 28 SCHEDULED SOAP DISPENSER.

cíee

Council on International Educational Exchange  
300 Fore Street  
Portland, ME

**Gensler**

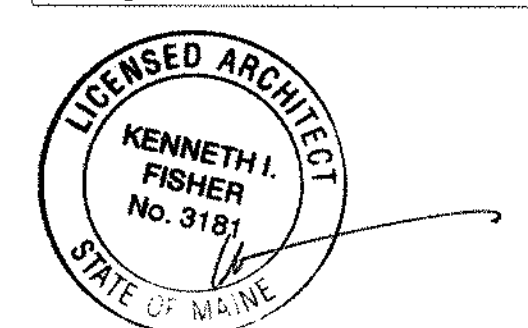
One Beacon Street  
Third Floor  
Boston MA 02108  
(617) 619-5700  
(617) 619-5701

Date & Issue Description	By	Check
09/16/16 ISSUED FOR PERMIT	ACH	AQ GL

**GENERAL NOTES**

**LEGEND**

Seal/Signature

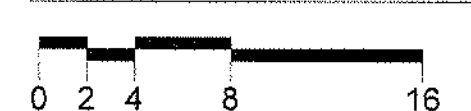


Project Name  
CIEE HQ Renovations

Project Number  
11.7088.000

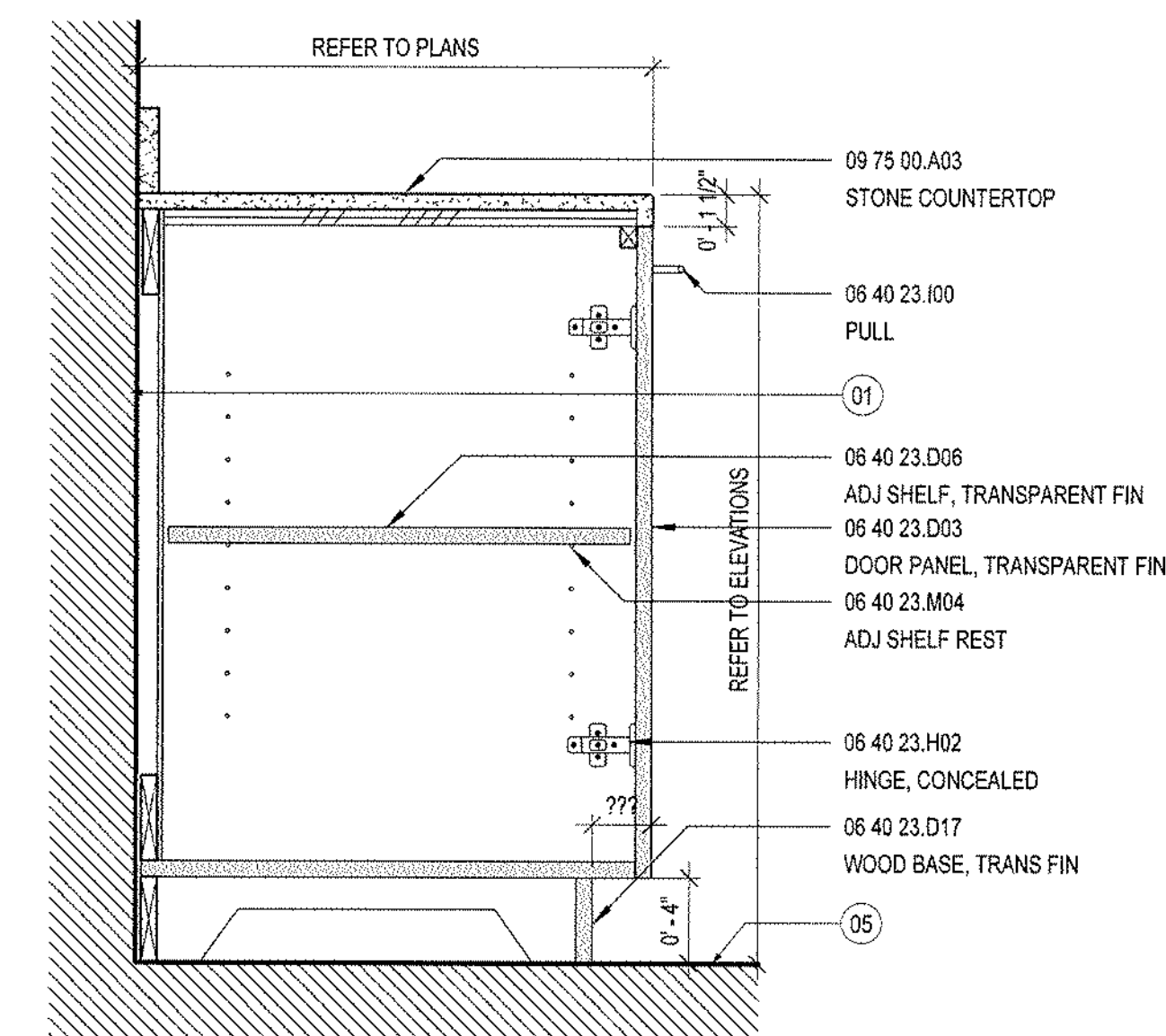
Description  
TYPICAL MILLWORK DETAILS

Scale

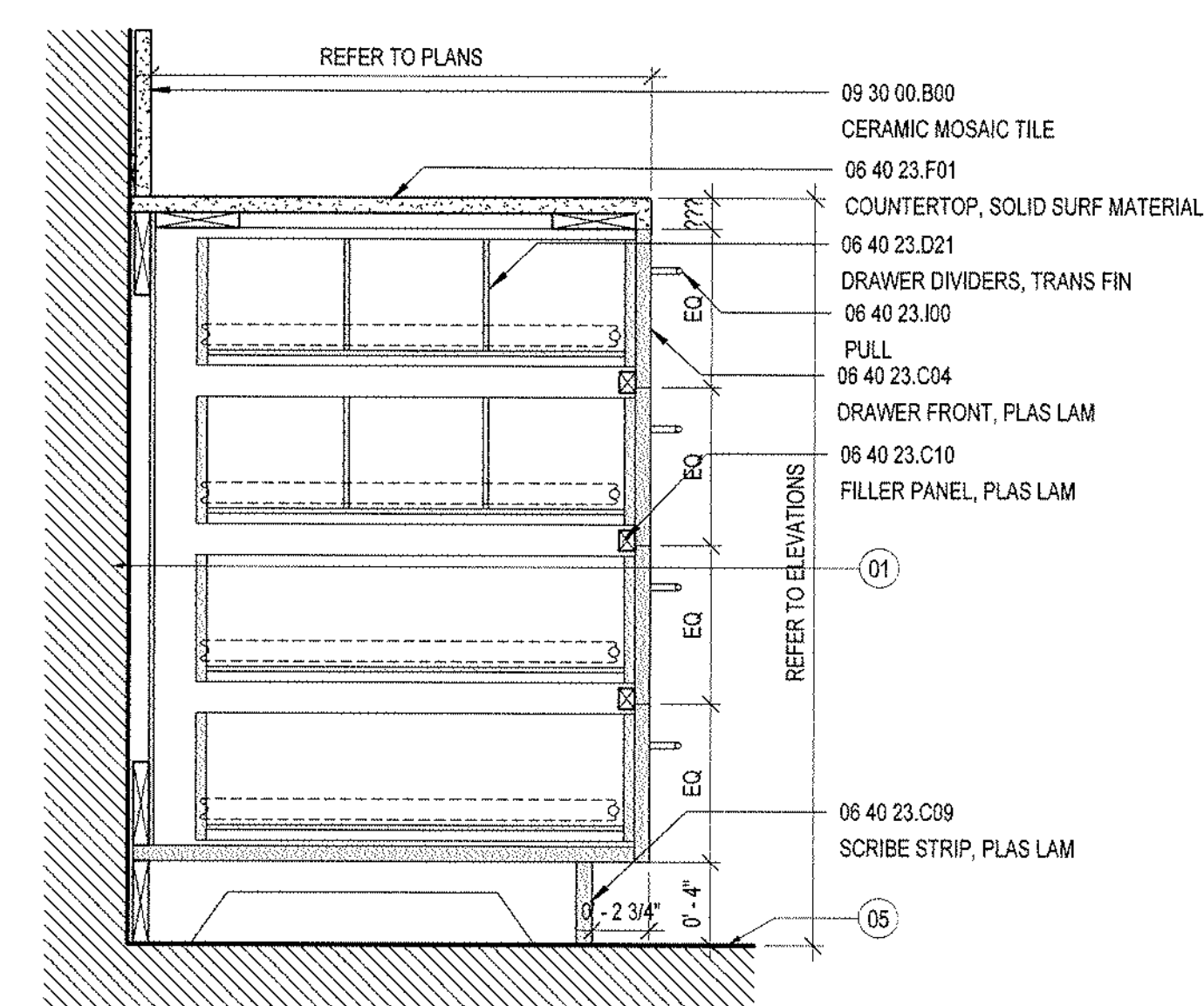


**A08.500**

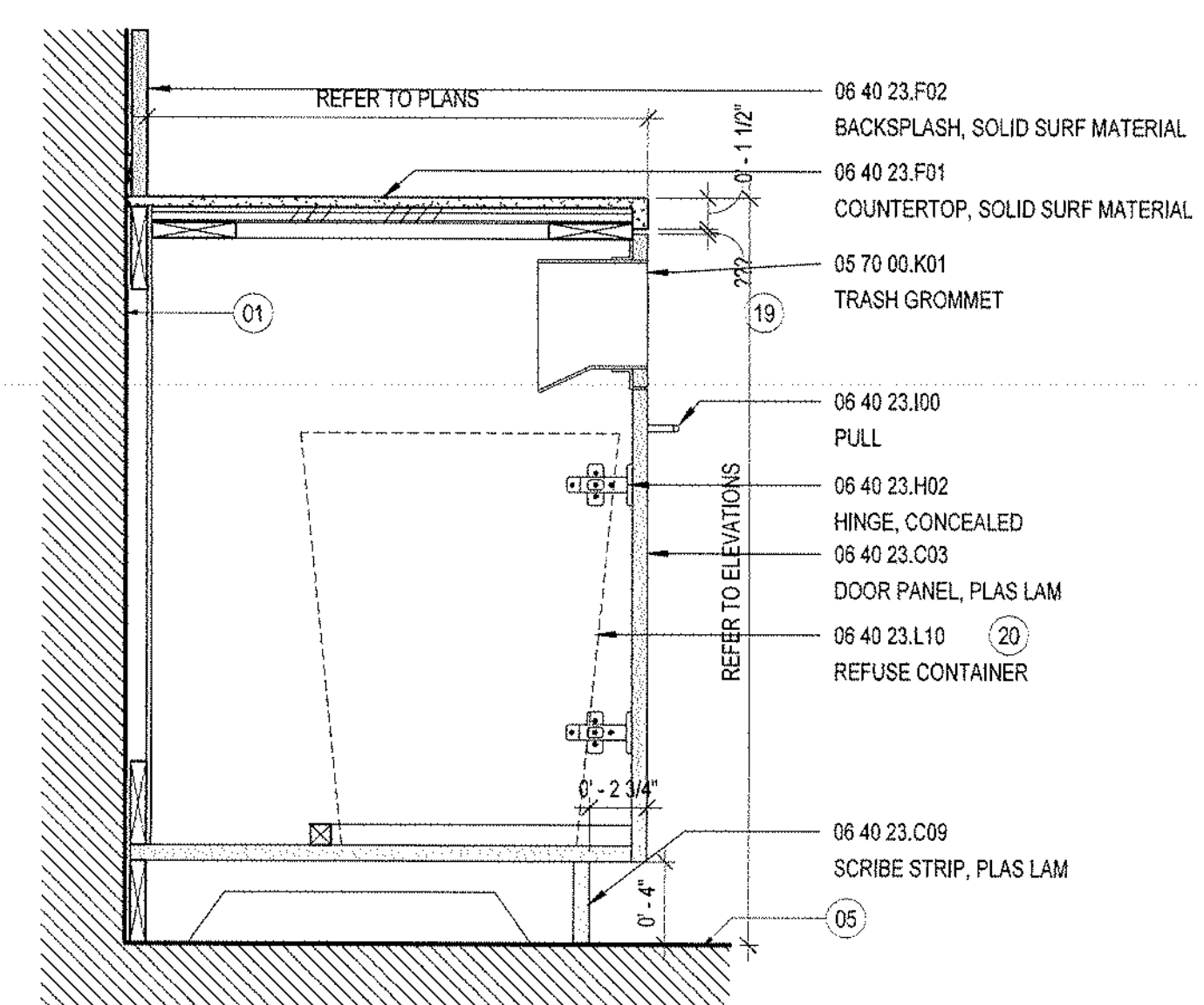
© 2018 Gensler



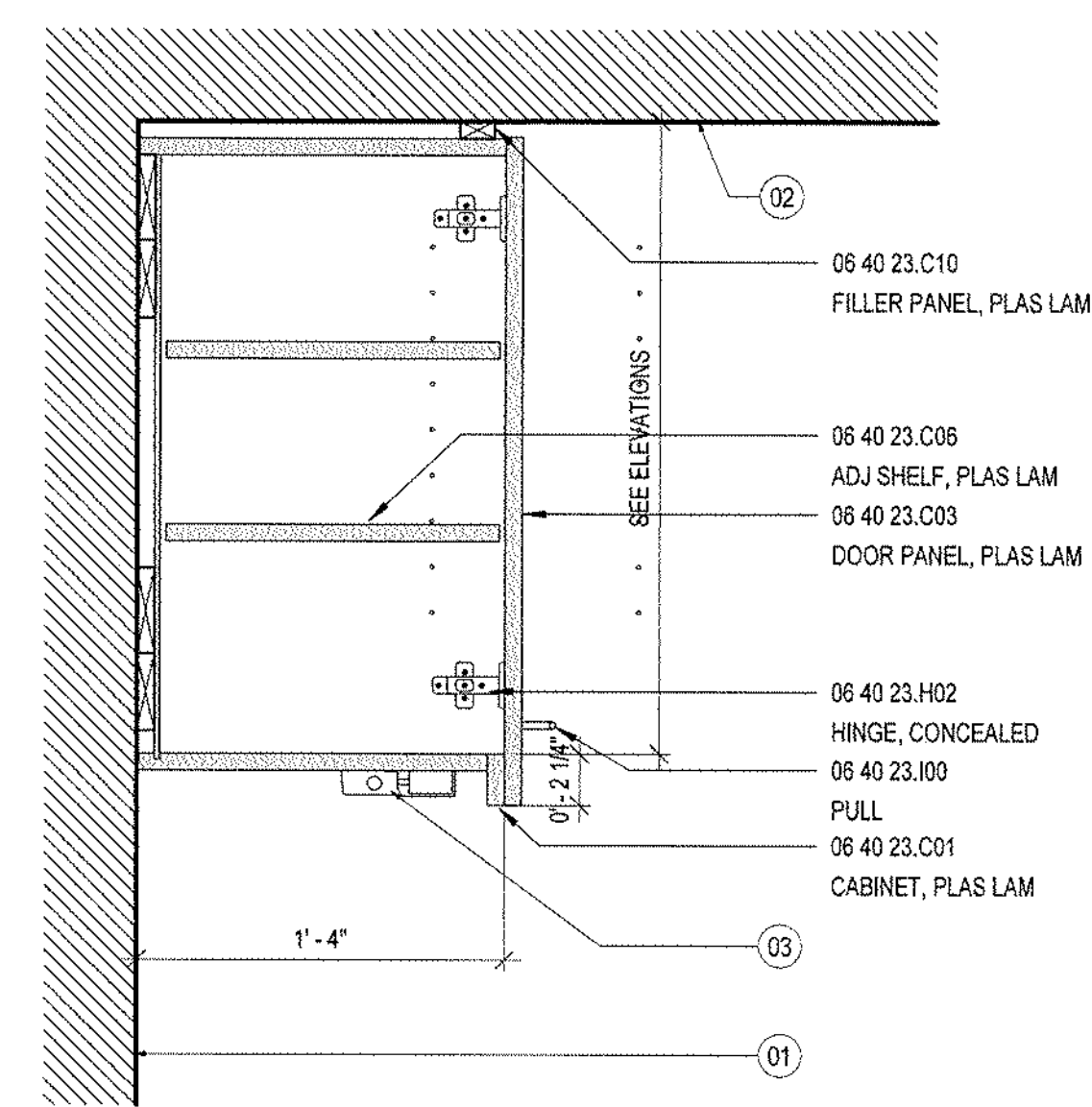
**03 BASE CABINET WITH ADJ. SHELF - TYP.**  
SCALE: 1 1/2" = 1'-0"



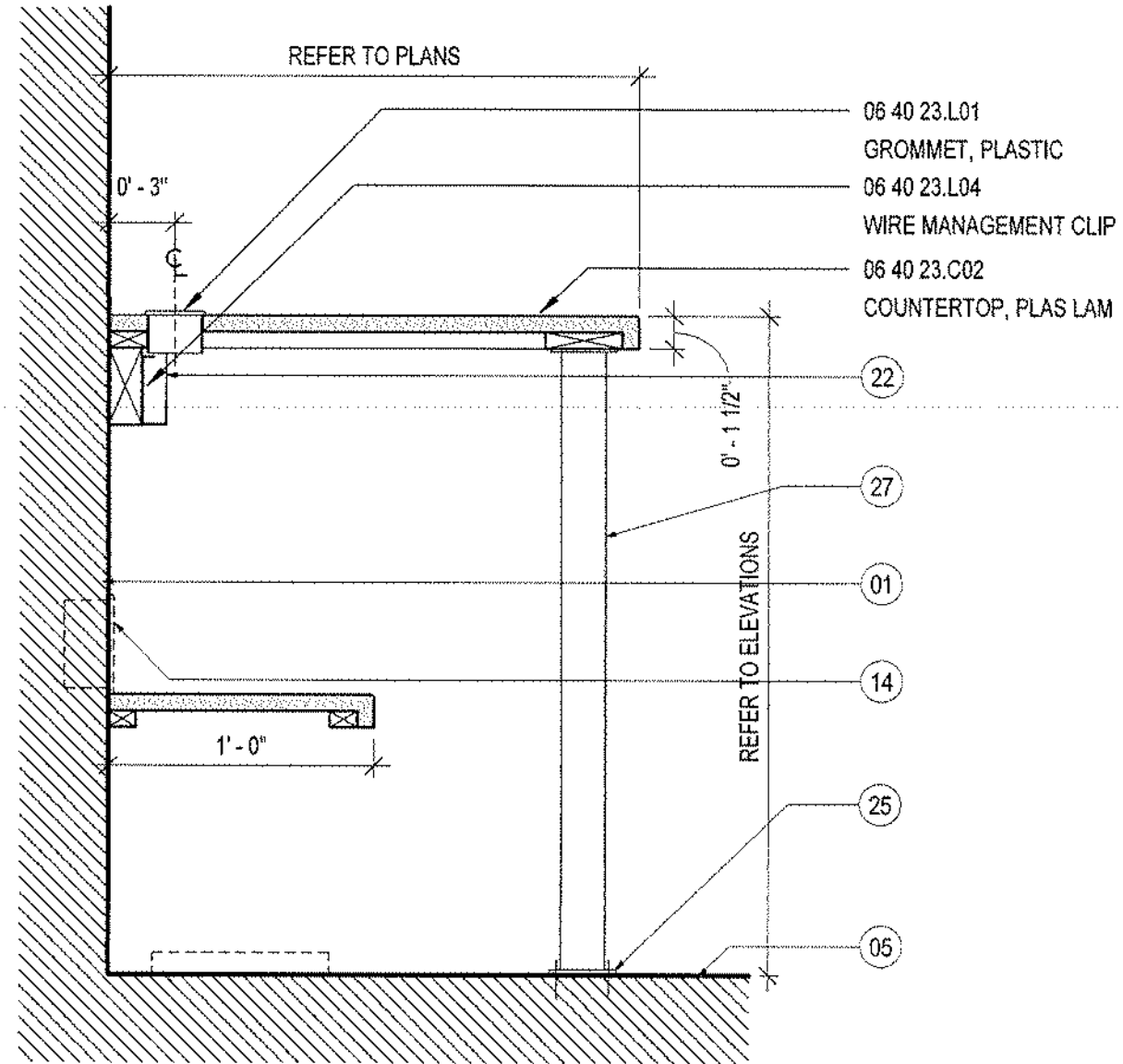
**02 BASE CABINET WITH DRAWERS - TYP.**  
SCALE: 1 1/2" = 1'-0"



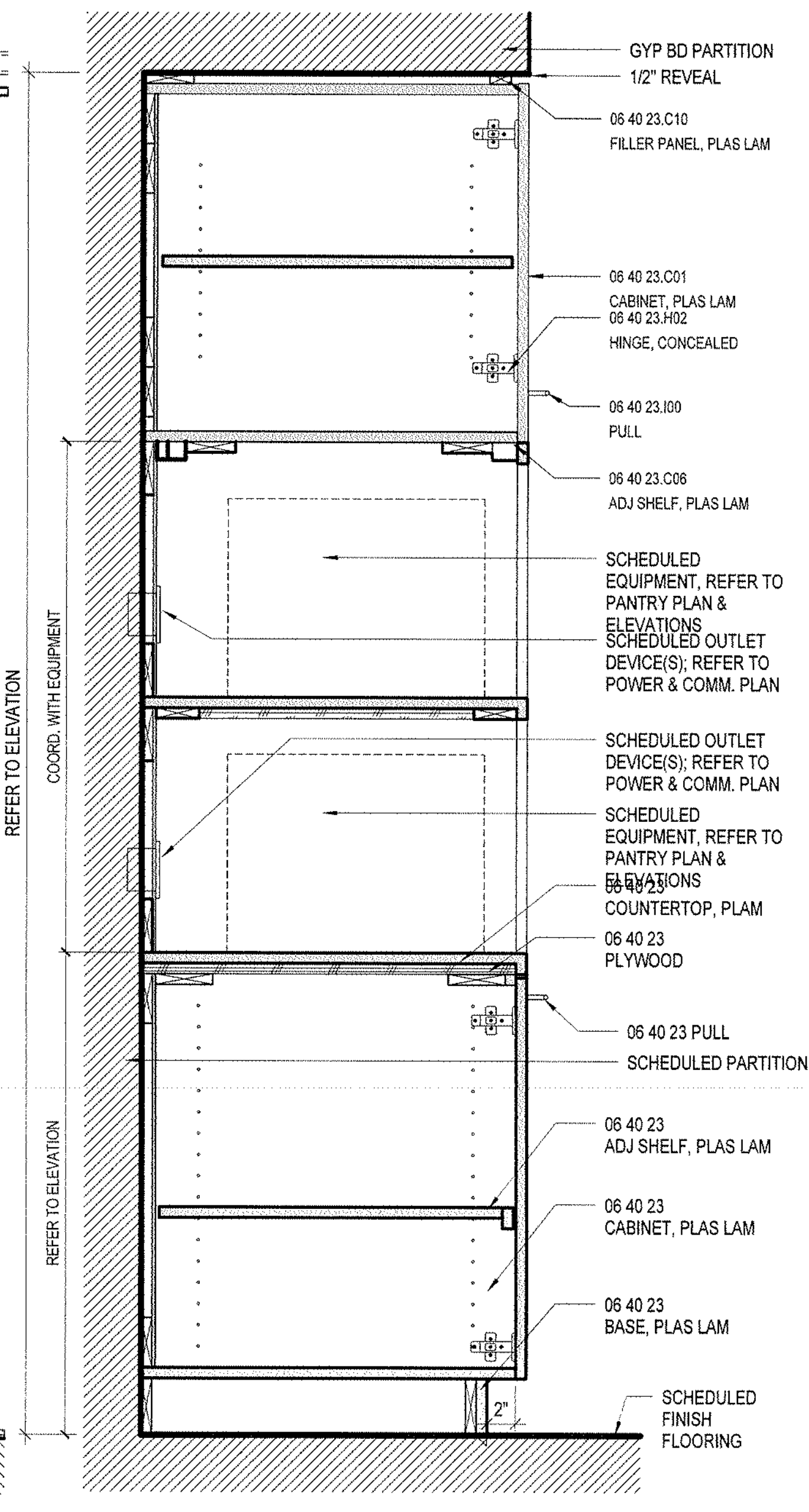
**01 BASE CABINET - FRONT TRASH OPENING**  
SCALE: 1 1/2" = 1'-0"



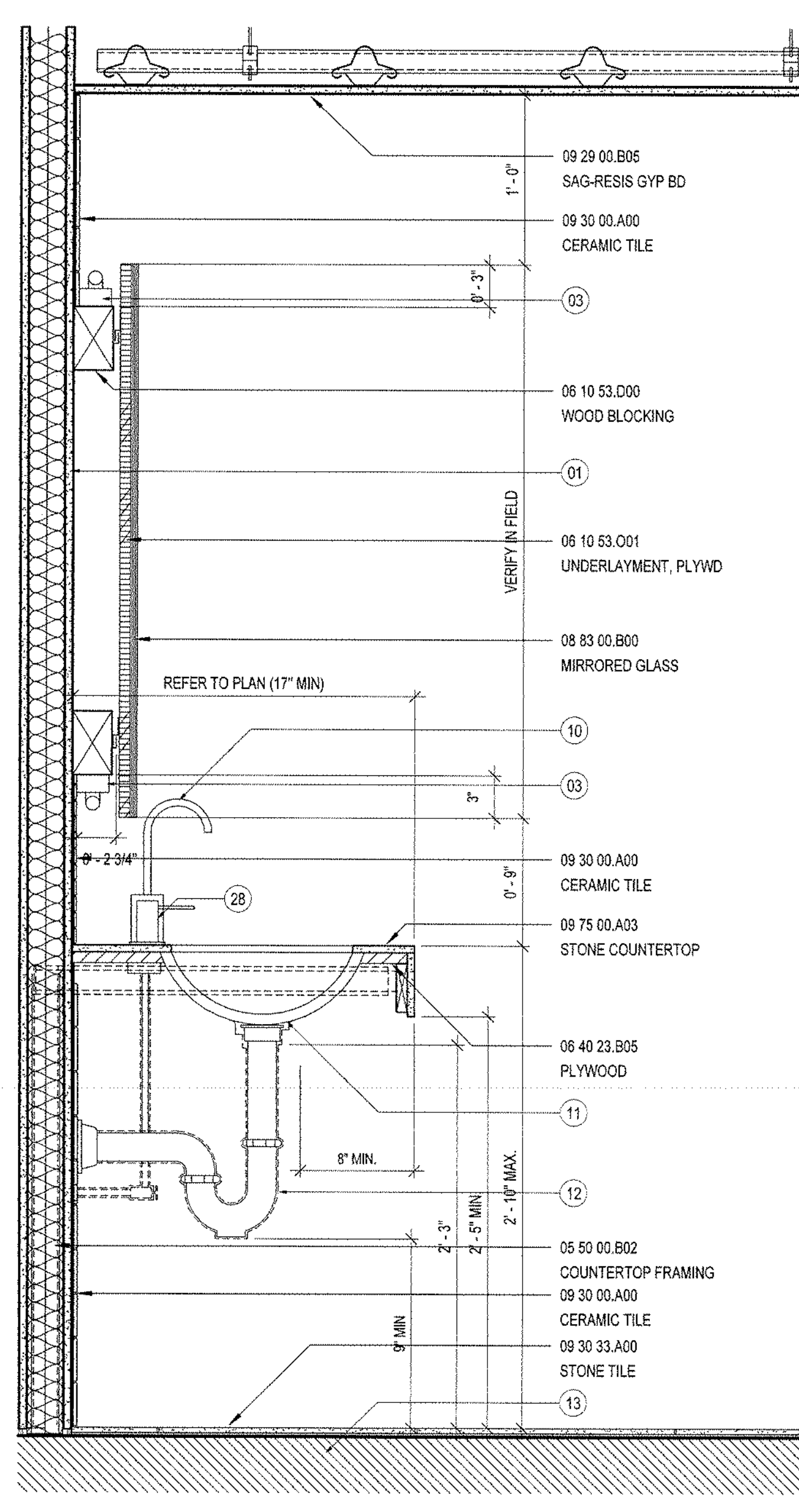
**05 UPPER CABINET - TYP.**  
SCALE: 1 1/2" = 1'-0"



**04 OPEN COUNTER**  
SCALE: 1 1/2" = 1'-0"



**06 CABINET WITH MICROWAVE SHELVES**  
SCALE: 1 1/2" = 1'-0"



**07 SECTION DETAIL AT LAVATORY COUNTER**  
SCALE: 1 1/2" = 1'-0"