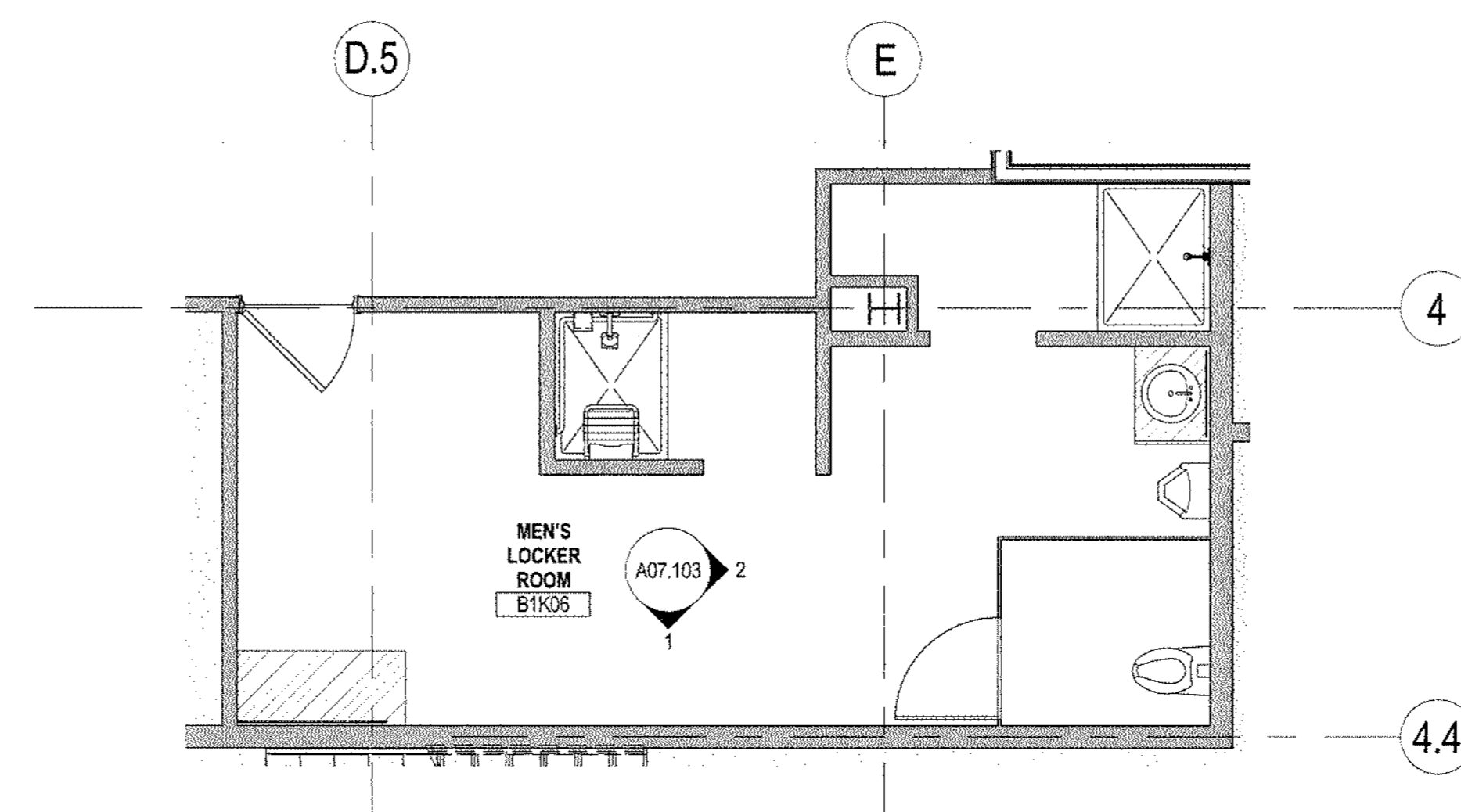
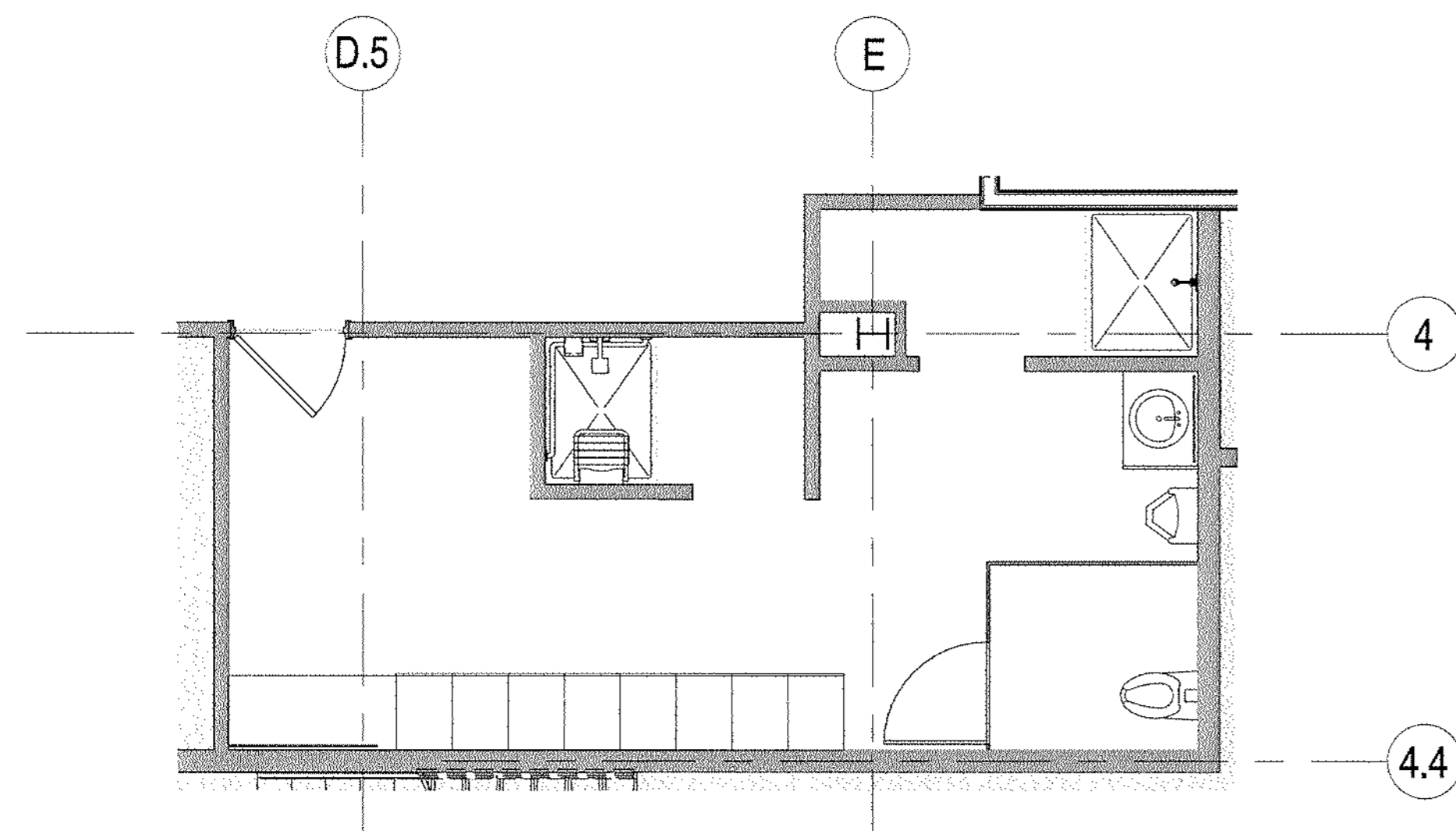


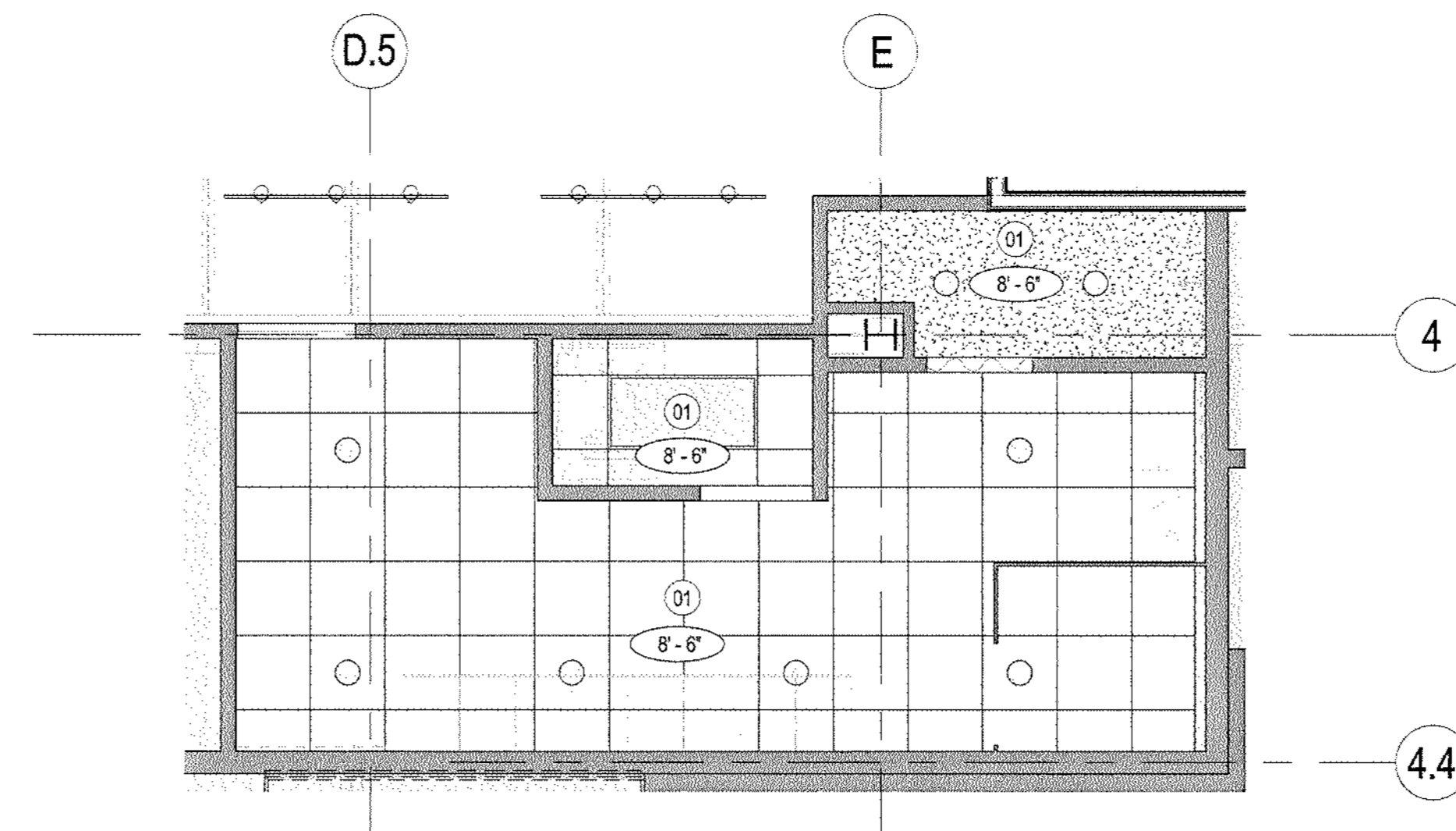
3 ENLARGED PLAN - BASEMENT LEVEL - MEN'S LOCKER ROOM - FINISH
SCALE: 1/4" = 1'-0"



1 ENLARGED PLAN - BASEMENT LEVEL - MEN'S LOCKER ROOM - CONSTRUCTION
SCALE: 1/4" = 1'-0"



4 ENLARGED PLAN - BASEMENT LEVEL - MEN'S LOCKER ROOM - FURNITURE
SCALE: 1/4" = 1'-0"



2 ENLARGED REFLECTED CEILING PLAN - BASEMENT LEVEL - MEN'S LOCKER ROOM
SCALE: 1/4" = 1'-0"

SHEET NOTES

01 EXISTING CEILING AND LIGHTING TO REMAIN.

cíee

Council on International Educational Exchange
300 Fore Street
Portland, ME

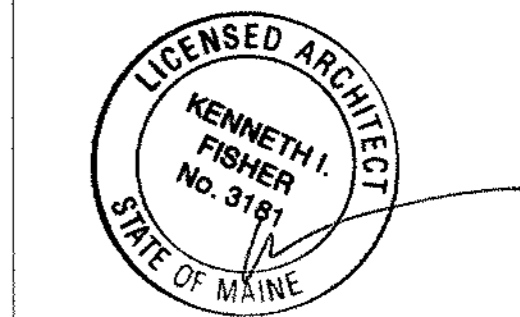
Gensler

One Beacon Street
Third Floor
Boston MA 02108
(617) 619-5700
(617) 619-5701

Date & Issue Description	By	Check
09/16/16 ISSUED FOR PERMIT	ACH	AQ GL

GENERAL NOTES

Seal/Signature



Project Name
CIEE HQ Renovations

Project Number
11.7086.000

Description
ENLARGED PLANS

Scale
0 2 4 8 16

A03.010

© 2016 Gensler