

wtf
workplace
transformation
facilitation

Lisa Whited
Chief Transformation Officer
207.329.2189 lisa@workplaceetf.com

Michael Barton
Value and Constructability Analyst
207.939.5432 michael@workplaceetf.com

Robert Brohu
Creative Direction + Branding
207.459.5454 robert@workplaceetf.com

Josef Chalot
Maine Licensed Architect
207.318.3234 AzimuhBlu@gmail.com

Project:

CIEE
Council on International Educational
Exchange
(Custom House Square Office Building)
Renovations
Basement
1st Floor
2nd Floor
3rd Floor

300 Fore Street, Portland
Maine
CBL: 029 K00601A
Zoning District:
B3 Downtown Business Zone

Owner/Tenant: CIEE
261 Commercial Street
Portland Maine, 04101

Owner/Tenant Contact:
Anthony Newton, Facilities Manager
207.632.1825

PC Construction,
Construction Manager
131 Presumpscot Street
Portland, ME 04103
Contact: Jared Ballard
207.874.2323 x106
jballard@pcconstruction.com

Date:
10/8/2015
Permit: 1st floor, basement

Sheet **Basement**
travel distance
occupant loads
egress capacity

Sheet Number

ref.1

Travel Distances (NFPA Table 1.7.6)

Distances are for sprinklered occupancies:

Assembly
Common path: 75' Occupant load less than 50
Dead End: 20'
Travel Distance: 200'

Business
Common path: 100'
Dead End: 50'
Travel Distance: 300'

Storage, Ordinary (S-1)
Common path: 100'
Dead End: 100'
Travel Distance: 400'

Egress Capacity at floor level based on widths of components

Exit to Street:
Door clear width = 33", 33/2 = 165 people

Stair #1:
Stair clear width = 44", 44/3 = 146 people
Door clear width = 33", 33/2 = 165 people

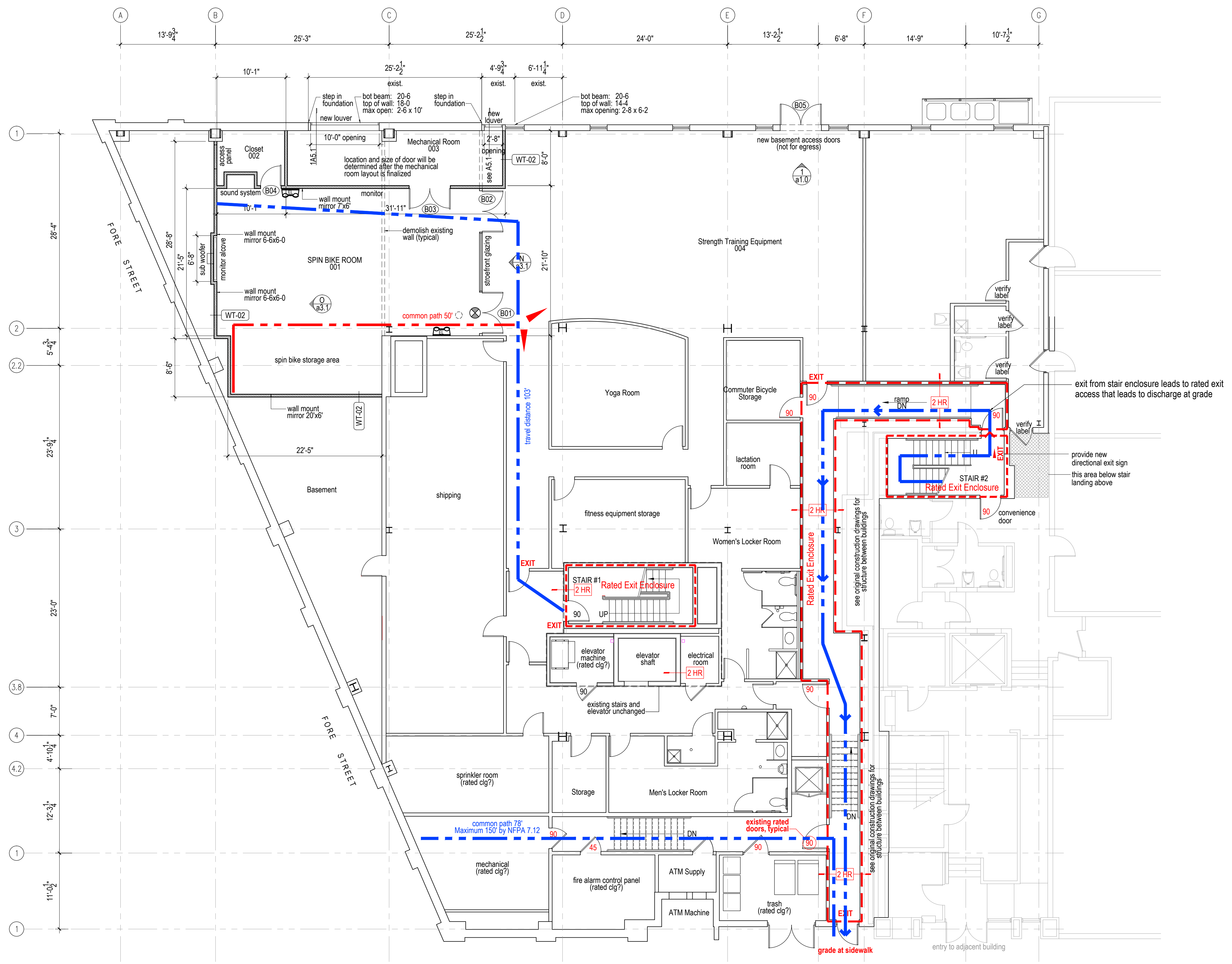
floor capacity determined by loss of 1 exit required to serve half of total occupant load:

Half the capacity = 146
Occupant load capacity at floor = 146x2 = 292

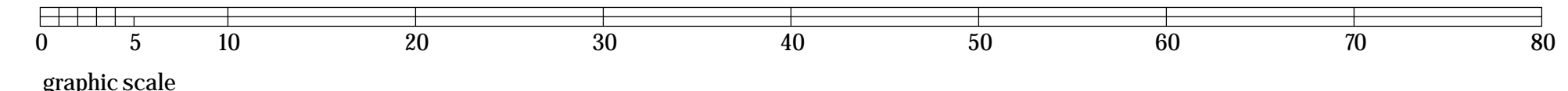
Occupant Load, based on actual number of occupants per IBC 1004.2 and NFPA 7.3.1.3.1

Room	Area	Occpnts	Load
Spin Room	1393	27	1 per 50
Fitness Center	2293	45	1 per 50
Women's Lockers	471	9	1 per 50
Men's Locker	291	5	1 per 50
Shipping	929	3	1 per 300

Total Basement Floor Design Load: 89 Occupants



Basement Floor Plan
Scale: 1/8" = 1'-0"



← north