

**wtf**  
workplace  
transformation  
facilitation

Lisa Whited  
Chief Transformation Officer  
207.329.2189 lisa@workplaceetf.com

Michael Barton  
Value and Constructability Analyst  
207.939.5432 michael@workplaceetf.com

Robert Brohu  
Creative Direction + Branding  
207.450.5494 robert@workplaceetf.com

Josef Chalot  
Maine Licensed Architect  
207.318.3234 AzimuhBlu@gmail.com

**Project:**  
CIEE  
Council on International Educational  
Exchange  
(Custom House Square Office Building)  
Renovations  
Basement  
1st Floor  
2nd Floor  
3rd Floor

300 Fore Street, Portland  
Maine  
CBL: 029 K00601A  
Zoning District:  
B3 Downtown Business Zone

**Owner/Tenant:** CIEE  
261 Commercial Street  
Portland Maine, 04101

**Owner/Tenant Contact:**  
Anthony Newton, Facilities Manager  
207.632.1825

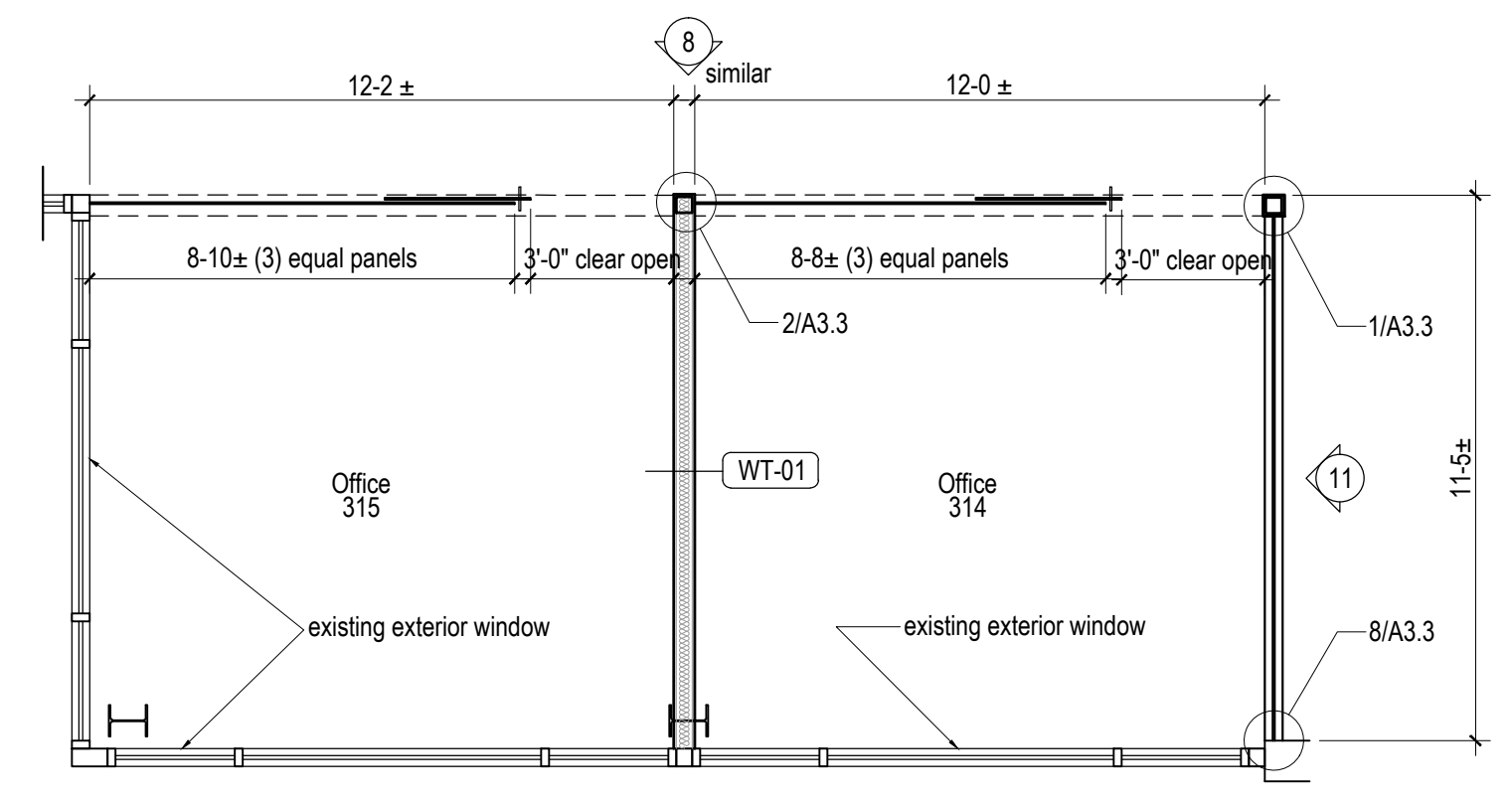
**PC Construction,  
Construction Manager**  
131 Presumpscot Street  
Portland, ME 04103  
Contact: Jared Ballard  
207.874.2323 x106  
jballard@pcconstruction.com

**Date:**  
10/8/2015  
**Permit:** 1st floor, basement

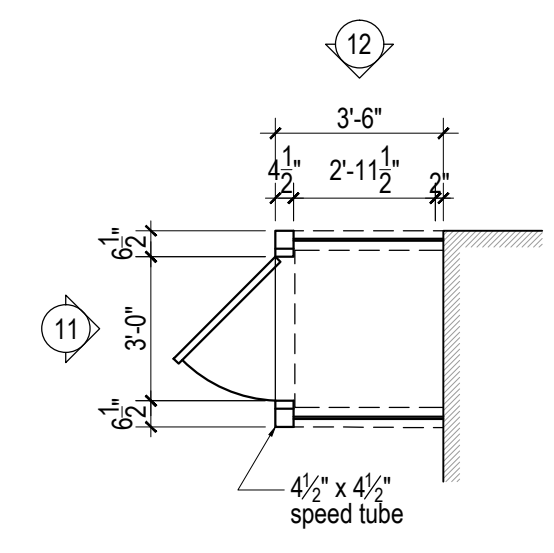
Sheet Title  
**storefront plans,  
elevations, details**

Sheet Number

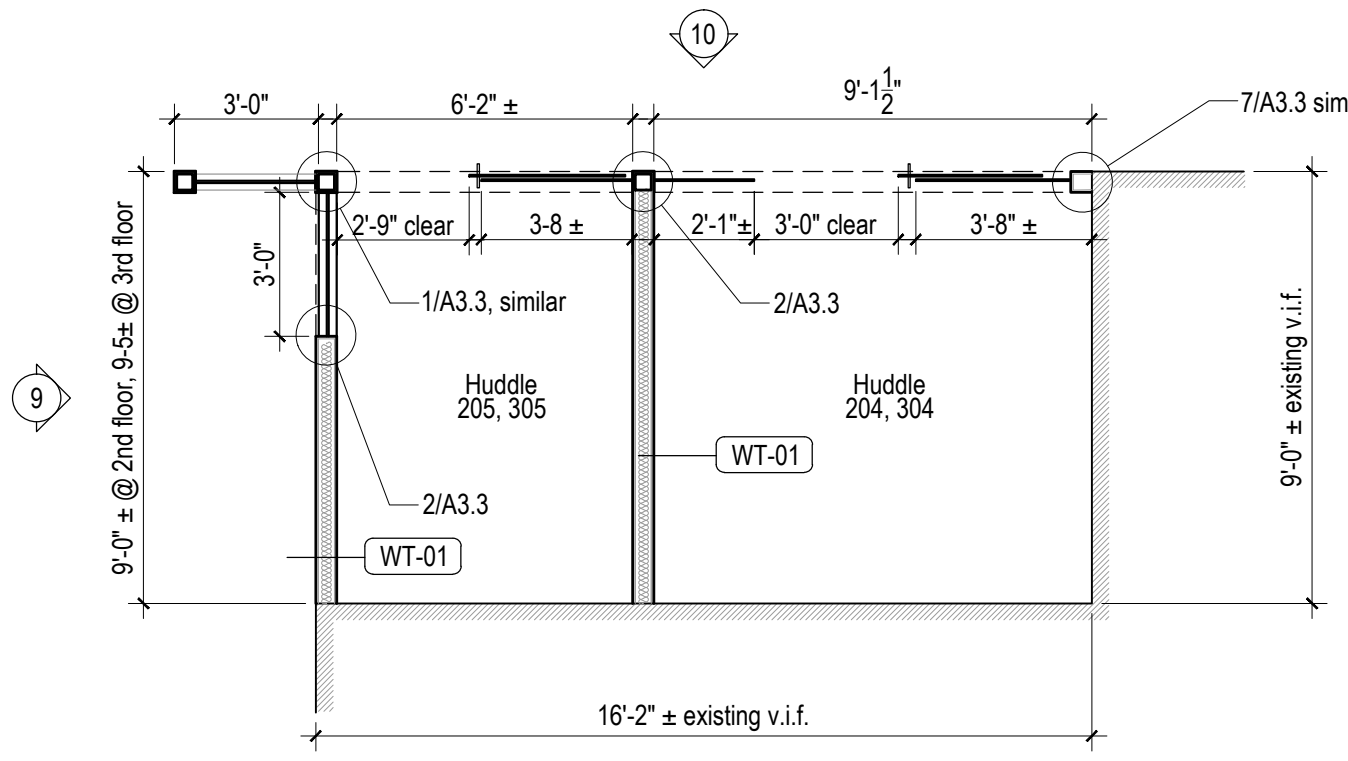
**a3.2**



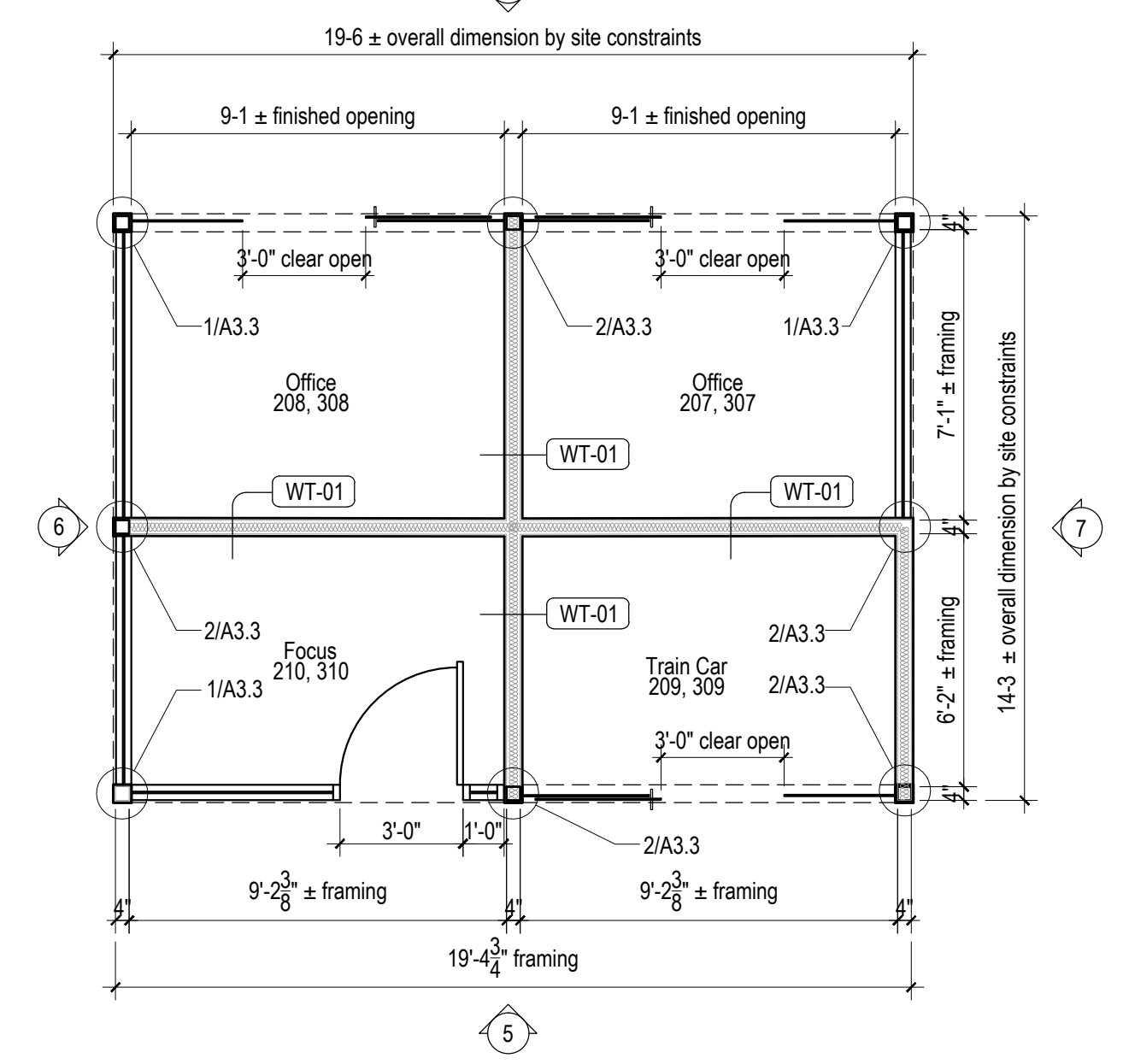
**F Offices 314, 315**  
1/4" = 1'-0"



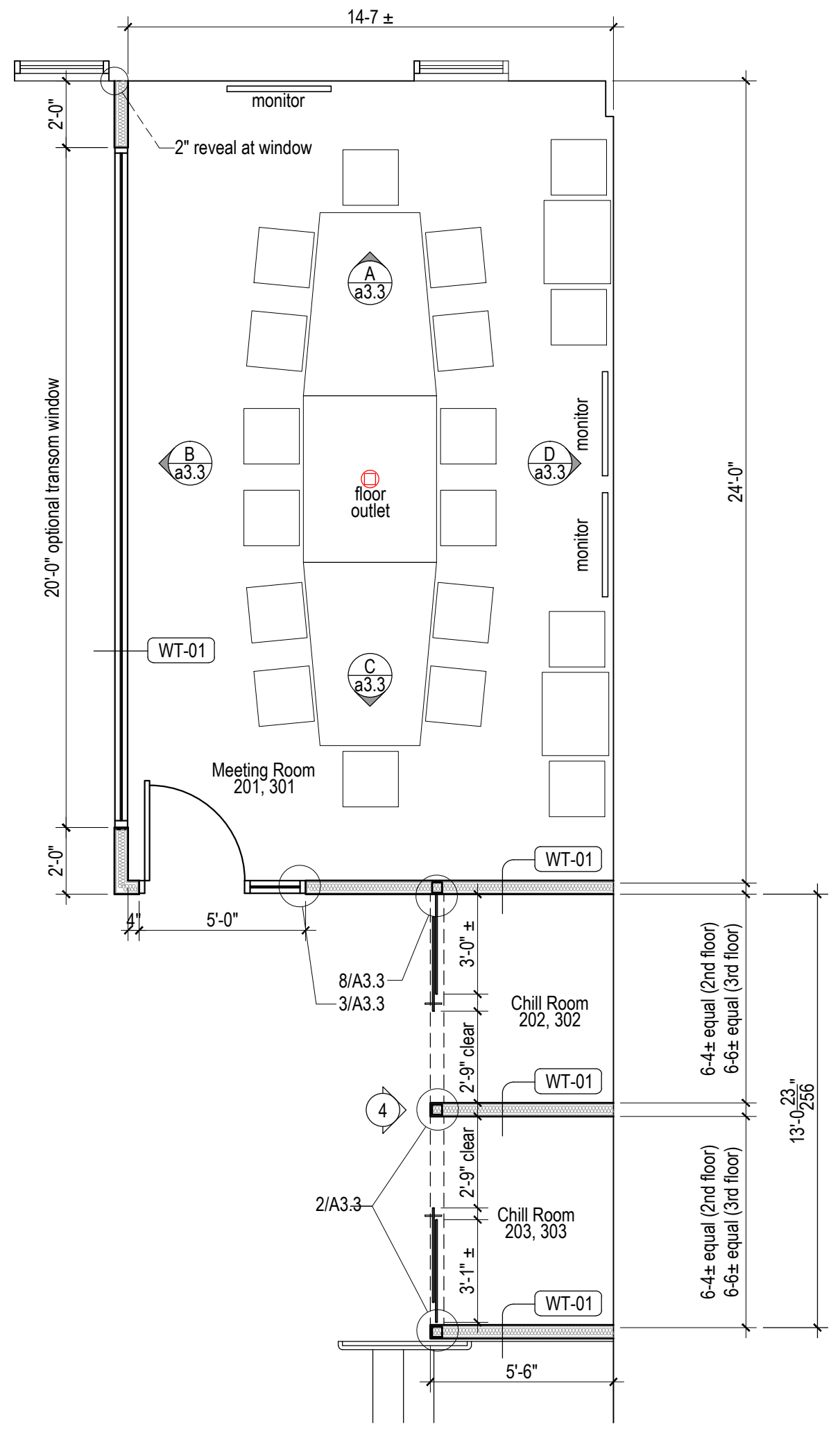
**E Phonebooth 211**  
1/4" = 1'-0"



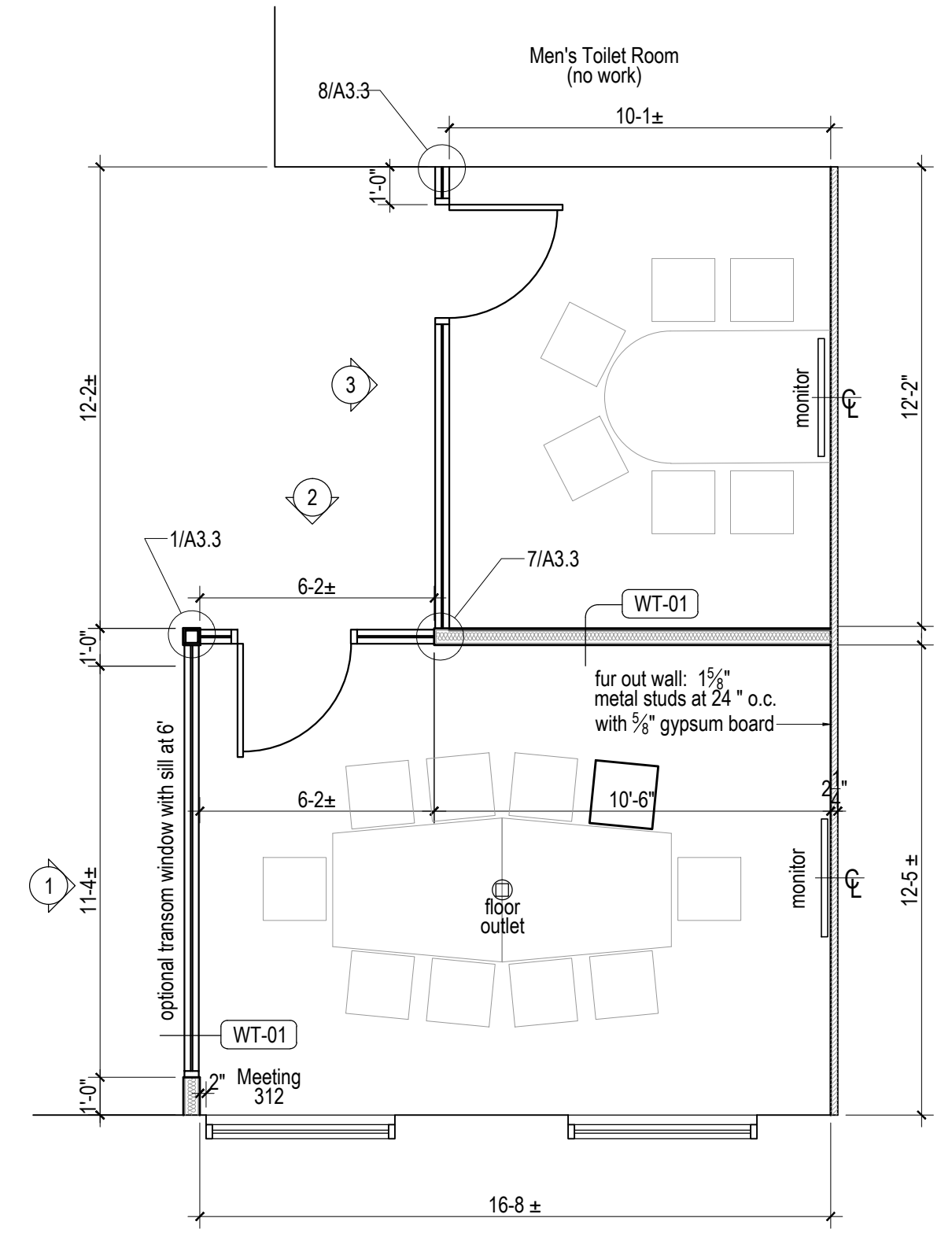
**D Huddle Rooms 204, 205, 304, 305**  
1/4" = 1'-0"



**C Rooms 207-201, 307-310**  
1/4" = 1'-0"



**B Meeting Rooms 201 & 301, Chill Rooms**  
1/4" = 1'-0"



**A Meeting Rooms 312 & 311**  
1/4" = 1'-0"

Aluminum Storefront Reference Specification:

**Products:**  
Storefront Frames: Oldcastle Storefront Center set FG 3000 with 1/2" tempered glass. Frames shall be 2" by 4 1/2" in cross section. Glass panels to be butt jointed as shown and called tight to prevent air transfer at joint. Clear anodized aluminum Class II (interior use) finish.

**Aluminum Swinging Doors:** Oldcastle Rugged Entrance Series 375 Medium Style doors with 8" bottom rail. Clear anodized aluminum class II finish. Hardware specifications and schedule shall be developed with hardware supplier.

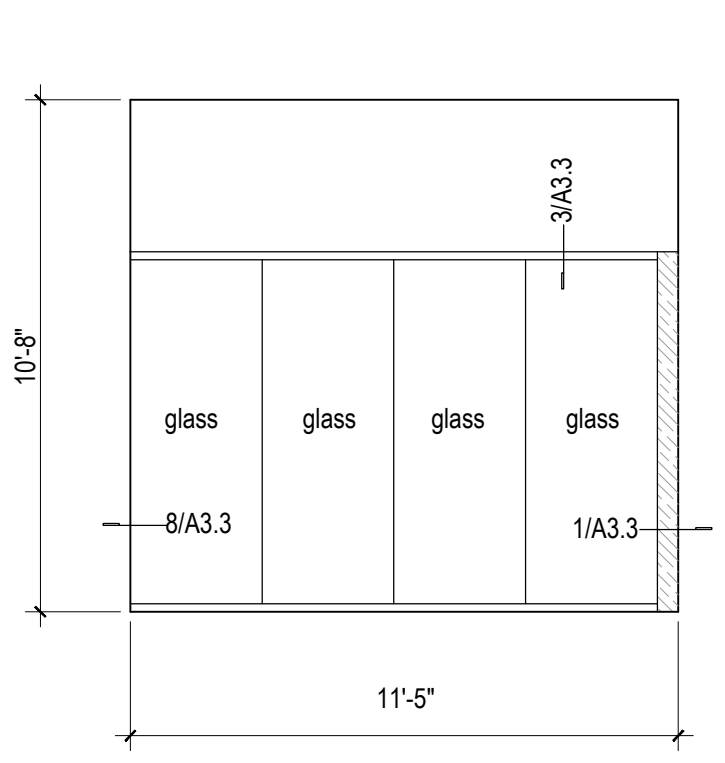
**Full Glass Sliding Door Track:** CR Lawrence r130 track, fastened to beam per manufacturer's requirements. Provide door stops and channels with end caps for fixed panels. Clear anodized aluminum class II finish. See a8 for typical header.

**Sliding Door handle:** CR Lawrence PR0221112 12" centerline by 1" diameter by 2 1/2" projection with clear anodized aluminum finish.

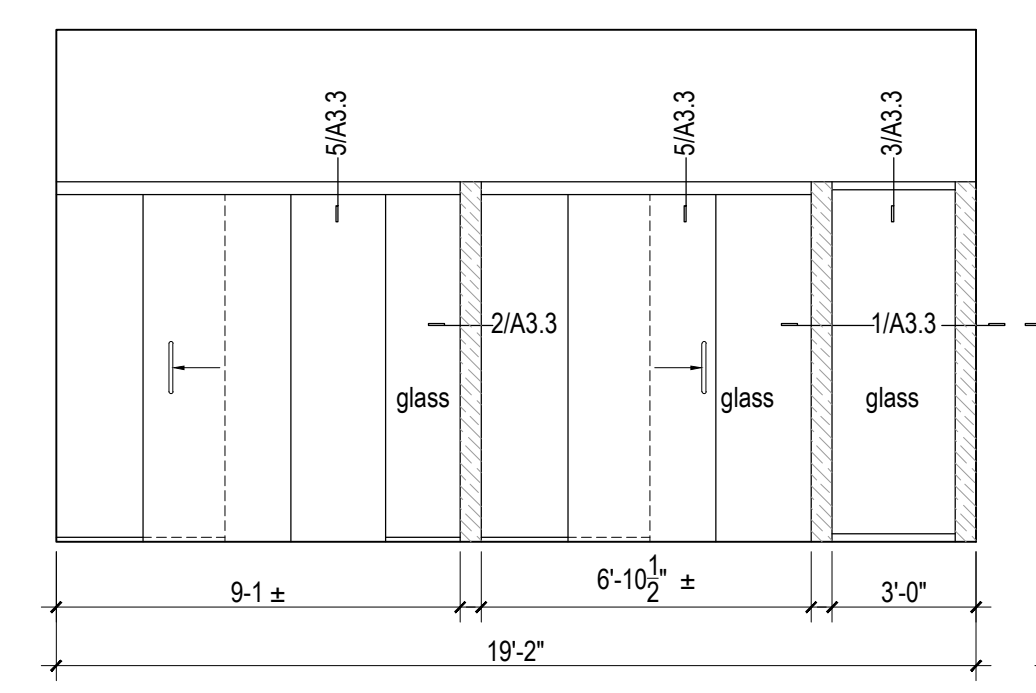
**Break Metal Wall Caps:** .04 Anodized aluminum break metal securely fastened to wall.

Provide shop drawings

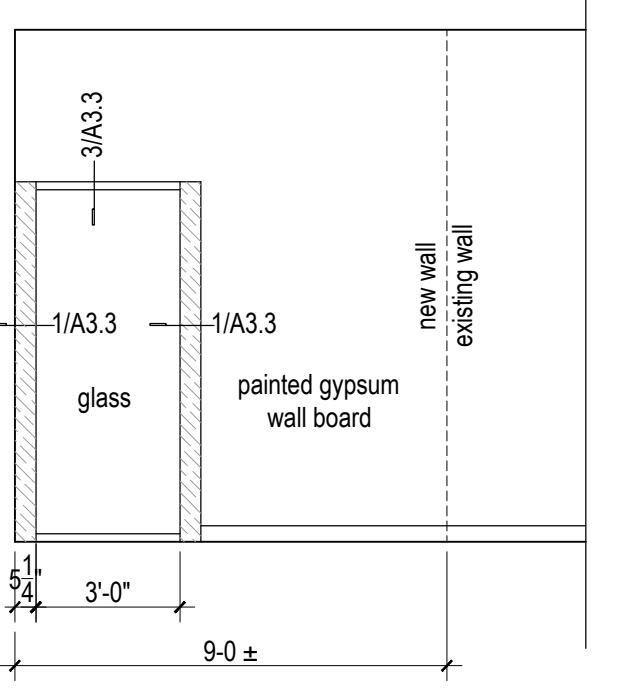
**Rail and Style Dimensions:**  
3/8" = 1'-0"



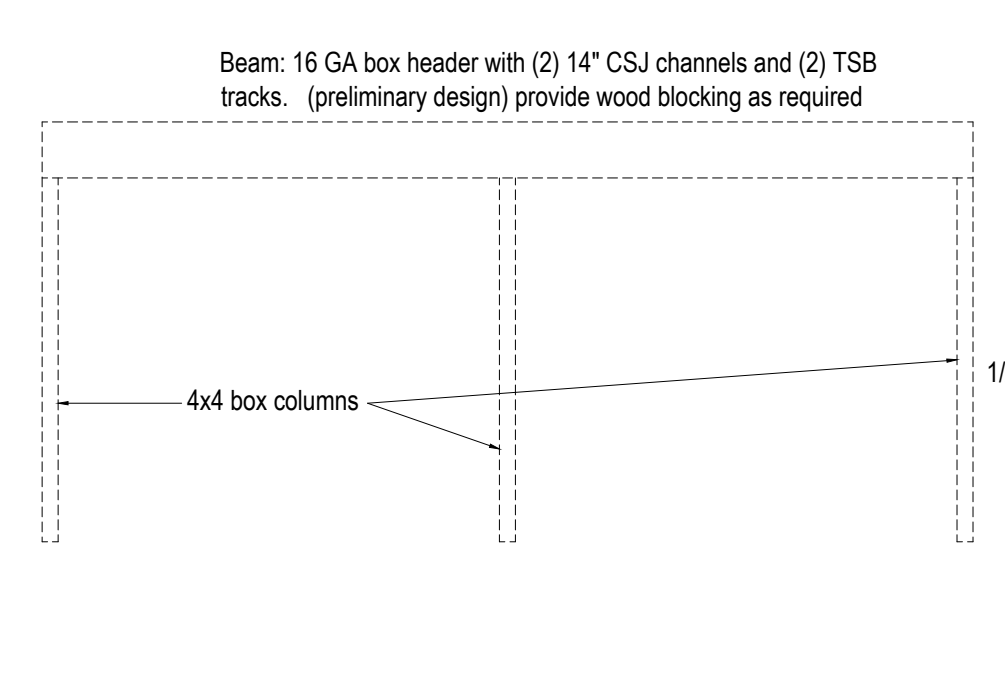
**11 Elevation**  
1/4" = 1'-0"



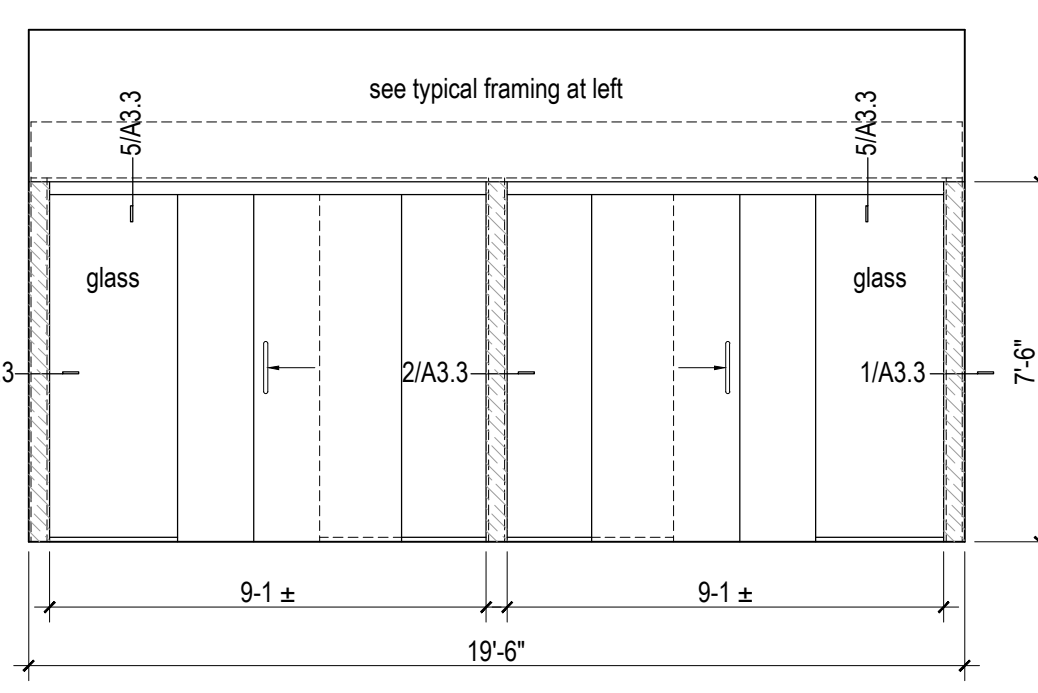
**10 Elevation**  
1/4" = 1'-0"



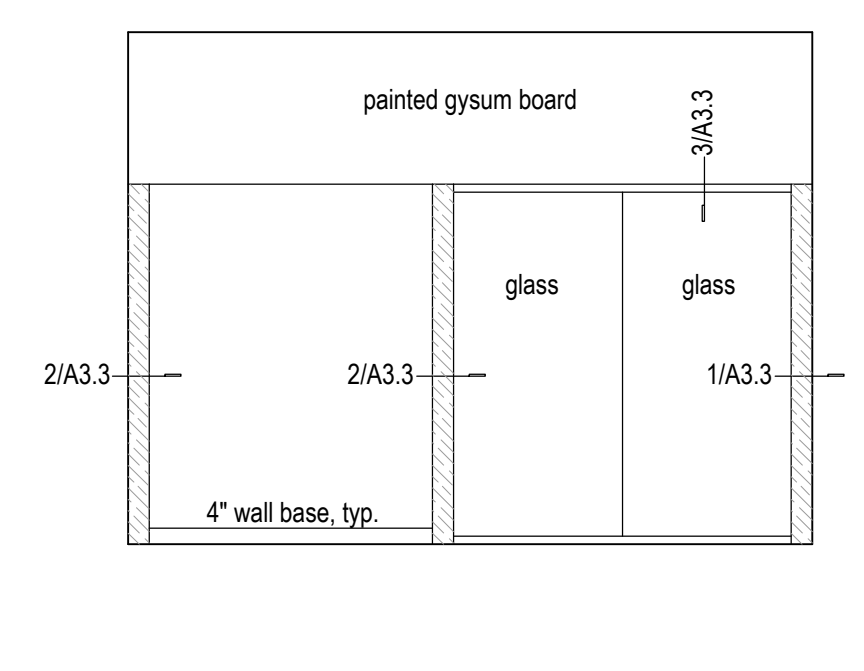
**9 Elevation**  
1/4" = 1'-0"



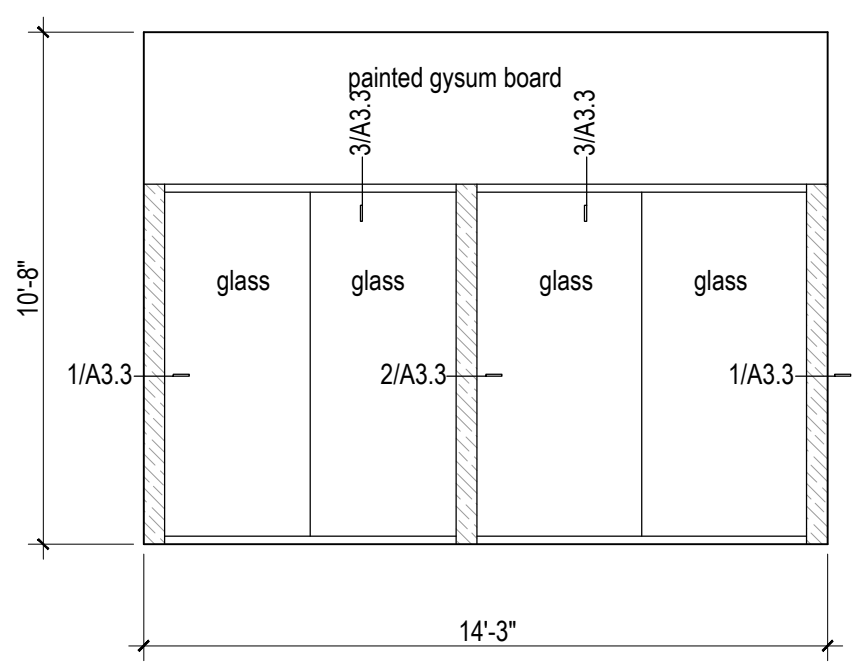
**8a Typical Track Support Configuration**  
1/4" = 1'-0"



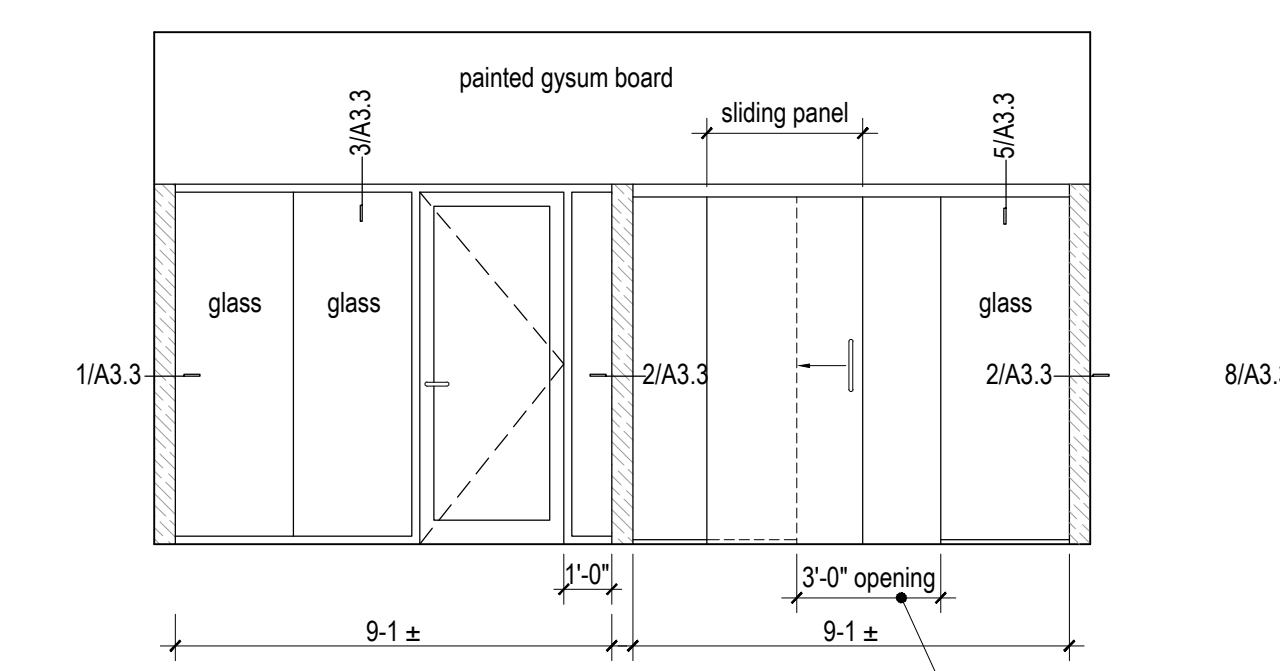
**8 Elevation**  
1/4" = 1'-0"



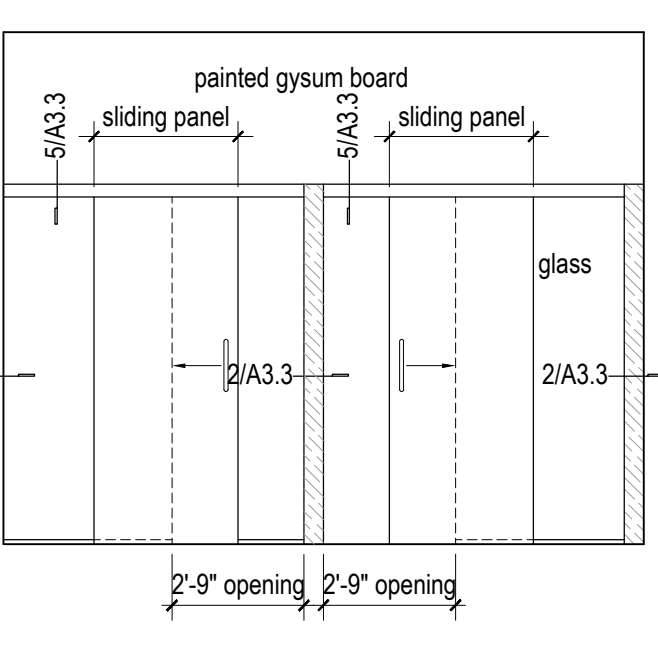
**7 Elevation**  
1/4" = 1'-0"



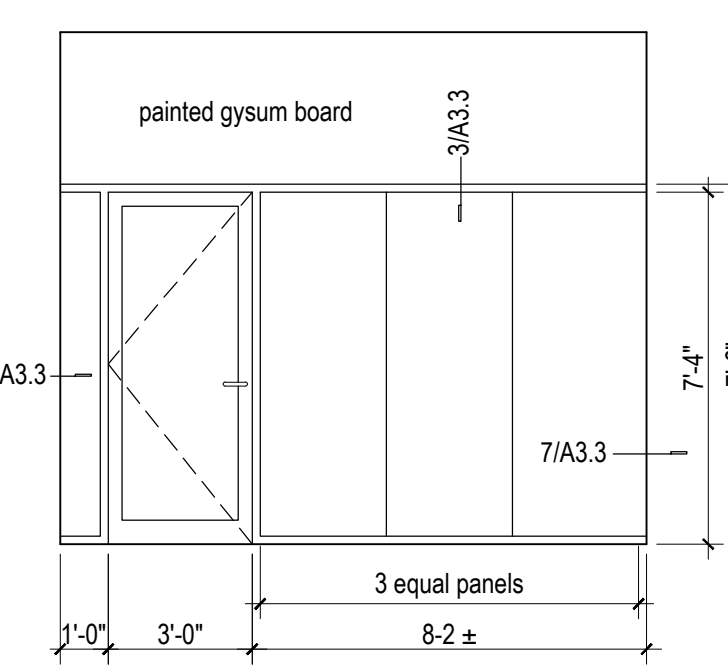
**6 Elevation**  
1/4" = 1'-0"



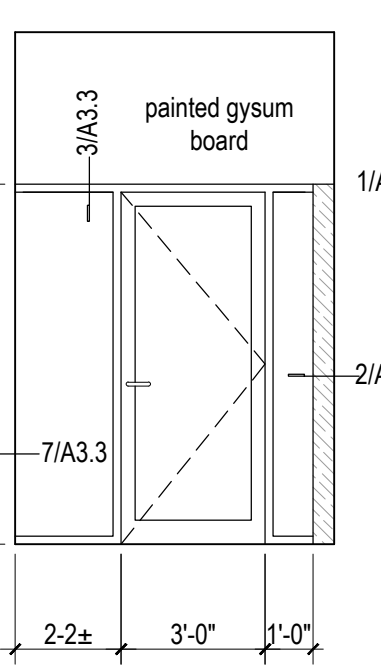
**5 Elevation**  
1/4" = 1'-0"



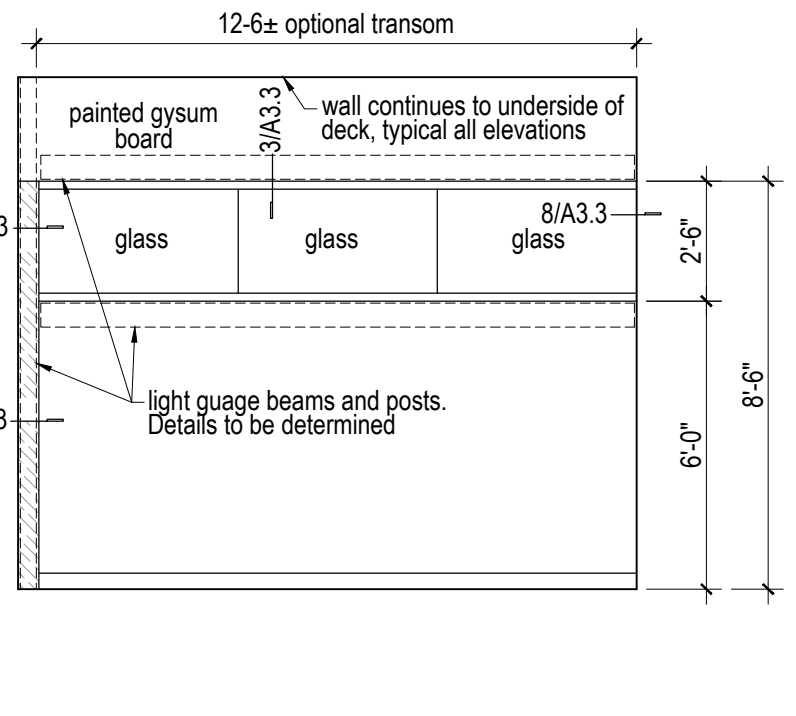
**4 Elevation**  
1/4" = 1'-0"



**3 Elevation**  
1/4" = 1'-0"



**2 Elevation**  
1/4" = 1'-0"



**1 Elevation**  
1/4" = 1'-0"