

FINISH SCHEDULE

Room Number	Room Name	Floor	Base
B01	Spin Room	Cardio Floor	Vinyl
B02	Closet	VCT	Vinyl
Bo3	Mechanical Room	None	None
B04	Fitness Room	Existing	Existing
100	Hall	PT	PT
101	Training Room	CPT	Vinyl
102	Training Room Storage	CPT	Vinyl
103	Green Room	CPT	Vinyl
104	Stage	CPT	Vinyl
105	Event Space	CPT	Vinyl
105A	Entry Nook East	CPT	Vinyl
105B	Entry Nook West	CPT	Vinyl
106	Event Storage	CPT	Vinyl
107	Catering Kitchen	VCT	Vinyl
108	AV Room	CPT	Vinyl
109	AV Storage	CPT	Vinyl
110	Emergency Exit	CPT	Vinyl
111	Lobby and Display	PT	PT
112	Reception	PT	PT
113	Entry Lobby	PT	PT
114	Lobby Cafe	PT	PT
115	Kitchenette	PT	PT
116	Back Kitchenette	PT	PT
117	Facilities Office	CPT	Vinyl
118	118 Mail Room	CPT	Vinyl
201	Meeting Room	CPT	Vinyl
202	Chill Room	CPT	Vinyl
203	Chill Room	CPT	Vinyl
204	Meeting Room	CPT	Vinyl
205	Huddle Room	CPT	Vinyl
206	Copy Center	CPT	Vinyl
207	Office	CPT	Vinyl
208	Office	CPT	Vinyl
209	Train Car	CPT	Vinyl
210	Focus Room	CPT	Vinyl
211	Open Work Area	CPT	Vinyl
212	Lounge	CPT	Vinyl
213	Work Stations	CPT	Vinyl
214	Table/Chair Storage	CPT	Vinyl
301	Meeting Room	CPT	Vinyl
302	Chill Room	CPT	Vinyl
303	Chill Room	CPT	Vinyl
304	Huddle Room	CPT	Vinyl
305	Huddle Room	CPT	Vinyl
306	Copy Center	CPT	Vinyl
307	Huddle Room	CPT	Vinyl
308	Office	CPT	Vinyl
309	Train Car	CPT	Vinyl
310	Focus	CPT	Vinyl
311	Open Work Area	CPT	Vinyl
312	Meeting Room	CPT	Vinyl
313	Alcove	CPT	Vinyl
314	Office	CPT	Vinyl
315	Office	CPT	Vinyl

Flooring

Basement:
 Cardio Floor: Gerflor Taraflex Sport M Comfort, color to be selected
 Vinyl Johnsonite 4" vinyl base, color to be selected
 VCT (match existing fitness room)

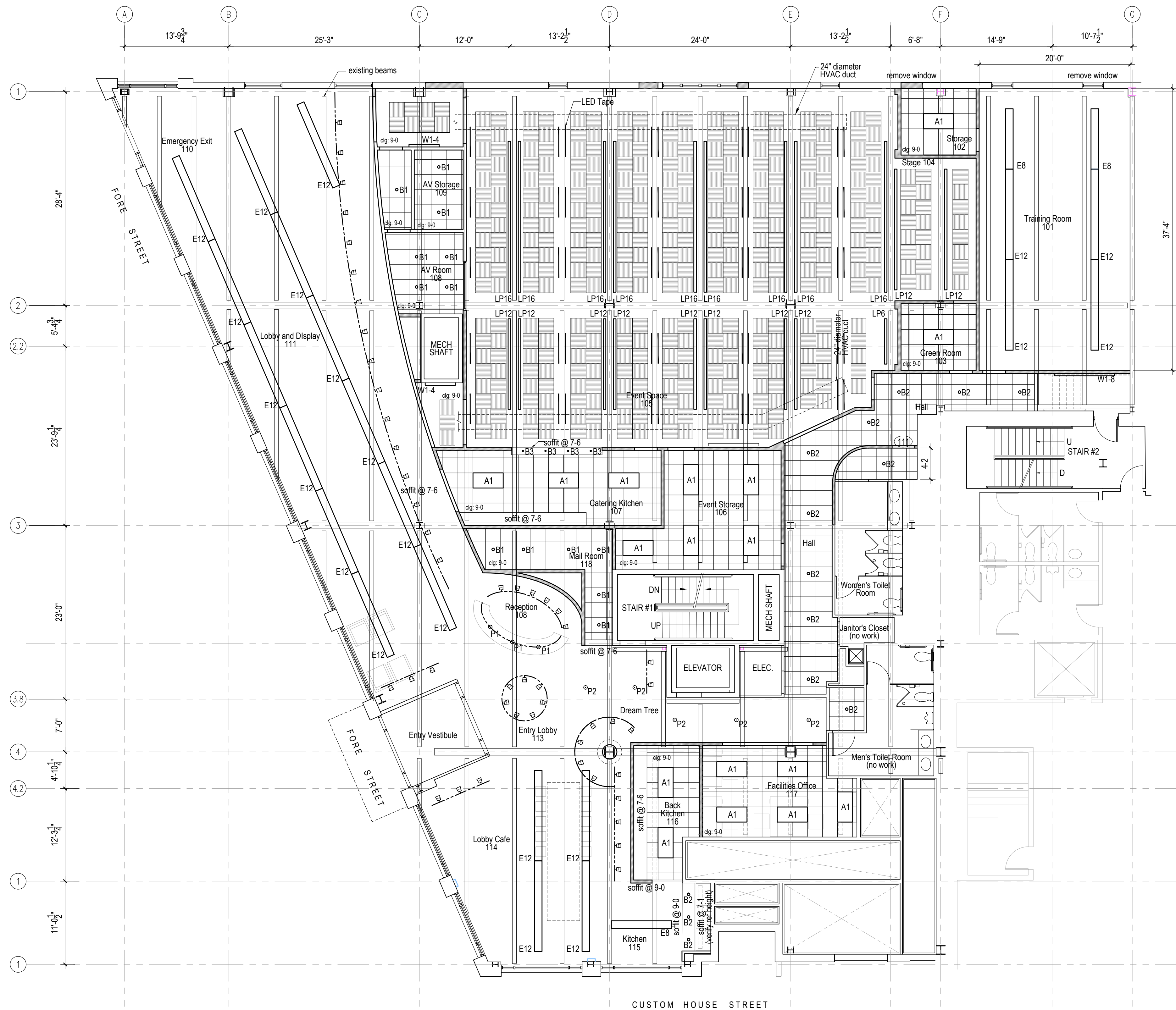
1st Floor:
 CPT Mohawk Reawakened "Masterly" #989, 12by36 plank style: Ashlar installation
 PT Daltile Forest Park Colorbody Porcelain Tile, "Blackwood" #FF99, 9"x36" field tile
 VCT Mannington Essentials 12"x12" VCT, color to be selected
 Vinyl Johnsonite 4" vinyl base, color to be selected

CEILING LEGEND

- WoodWorks Grille Tegular #662912 with Bio Acoustic Infill Panel NRC: .85 Pretude XL 15/16" Exposed Tee 6" Axiom Vector Trim flipped upside down at edges
- Ultima Tegular 1902 24 x 24 CAC 35 NRC .7 Grid: Suprafine 9/16 XL

LIGHTING LEGEND

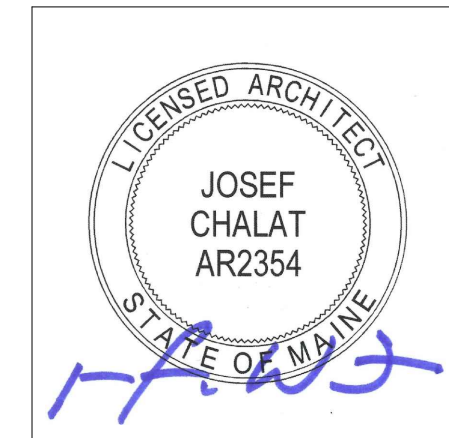
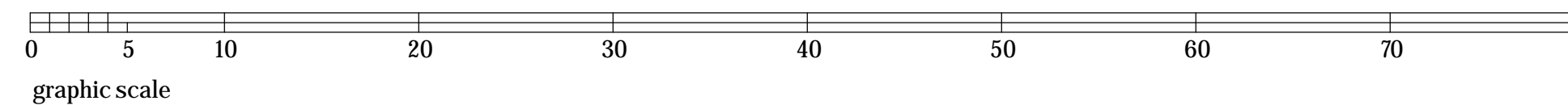
- A1 2x4 recessed troffer
- B1, B2 recessed can
- LP 4 Linear Pendant LED length in feet
- LR 4 Linear Recessed LED length in feet
- LDI 4 Linear Wallmount direct/indirect LED length in feet, mounted at 5'-0" AFF
- Track light: lighting heads to be determined
- existing direct/indirect fixture in new location, length in feet
- E12 existing direct/indirect fixture in new location, length in feet
- P pendant
- W ADA Wallmount
- pendant removed
- existing pendant replaced
- new pendant, new location
- LED Tape in mounting bracket indirect, on lower flange of steel
- emergency lighting see ref.1 and ref.3 for locations
- illuminated exit sign see ref.1 and ref.3 for locations



1st Floor Ceiling Plan

Scale: 1/8" = 1'-0"

←north



wtf
 workplace
 transformation
 facilitation

Lisa Whited
 Chief Transformation Officer
 207.329.2189 lisa@workplaceff.com

Michael Barton
 Value and Constructability Analyst
 207.939.5432 michael@workplaceff.com

Robert Brohu
 Creative Direction + Branding
 207.450.5494 robert@workplaceff.com

Josef Chalot
 Maine Licensed Architect
 207.318.3234 AzimuthBlu@gmail.com

Project:
 CIEE
 Council on International Educational Exchange
 (Custom House Square Office Building)
 Renovations
 Basement
 1st Floor
 2nd Floor
 3rd Floor

300 Fore Street, Portland
 Maine
 CBL: 029 K00601A
 Zoning District:
 B3 Downtown Business Zone

Owner/Tenant: CIEE
 261 Commercial Street
 Portland Maine, 04101

Owner/Tenant Contact
 Anthony Newton, Facilities Manager
 207.632.1825

PC Construction,
 Construction Manager
 131 Presumpscot Street
 Portland, ME 04103
 Contact: Jared Ballard
 207.874.2323 x106
 jballard@pcconstruction.com

Date
 10/8/2015
 Permit: 1st floor, basement

Sheet Title
**1st Floor
 Ceiling Plan**

Sheet Number
a2.1