

Gawron Turgeon
 ARCHITECTS
 29 Black Point Road
 Scarborough, Maine 04074
 www.gawronturgeon.com
 207-883-6307 or 207-883-0361 fax

Olympia Development, LLC
 300 Fore Street, First Floor
 Portland, Maine

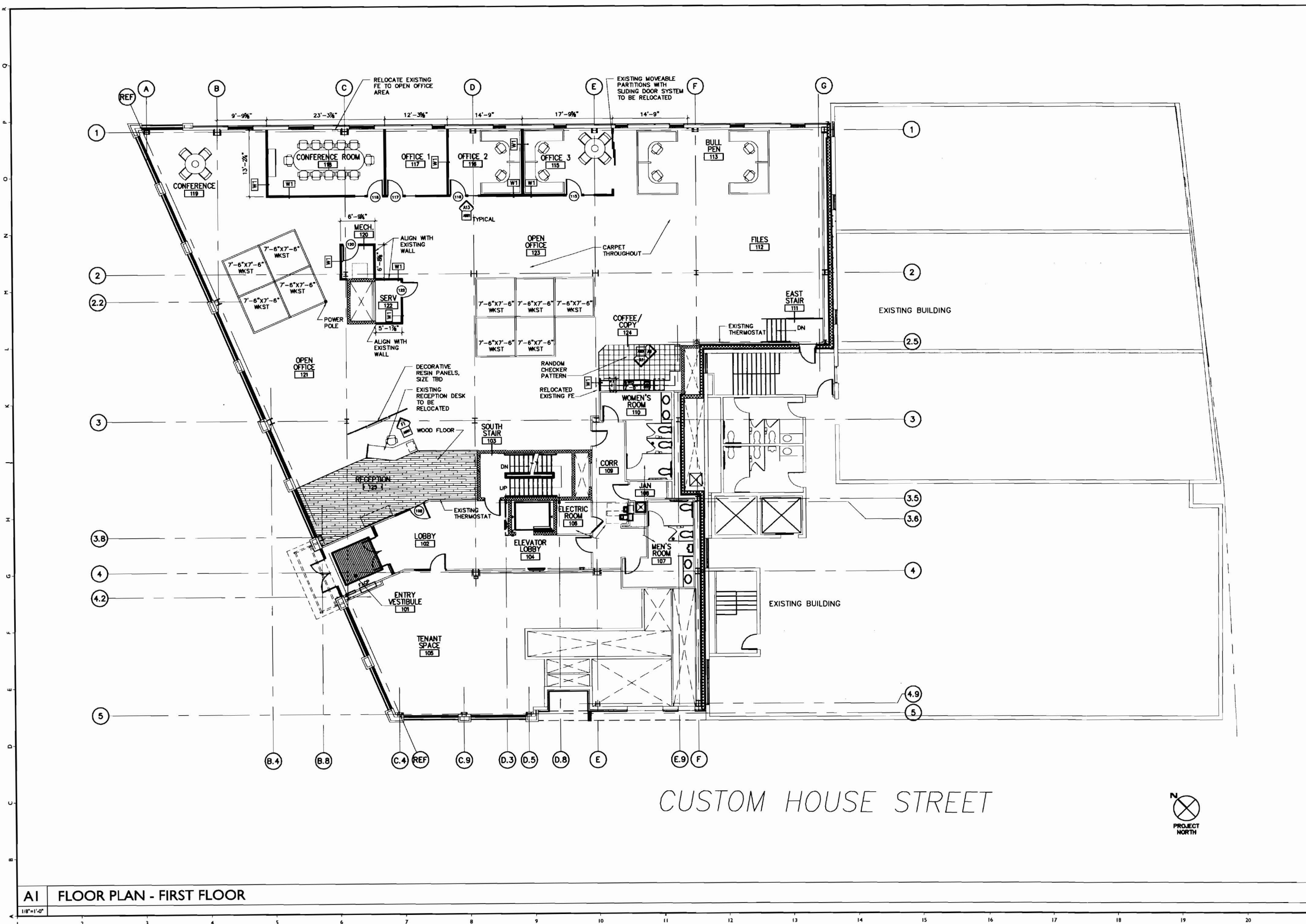
REVISIONS		
#	DATE	DESCRIPTION
1	1.23.09	PERMIT SET

DATE	01.19.09
PROJECT #	010309
DRAWN BY:	LAP
CHECKED BY:	MET
DRAWING SCALE	AS NOTED

SHEET TITLE
 FLOOR PLAN-
 FIRST FLOOR
 REVISED2

A101

© COPYRIGHT 1985-2008
 REPRODUCTION OR USE OF THIS
 DOCUMENT WITHOUT WRITTEN
 PERMISSION OF GAWRON TURGEON
 ARCHITECTS IS PROHIBITED



CUSTOM HOUSE STREET

A1 FLOOR PLAN - FIRST FLOOR

1/8"=1'-0"



Gawron Turgeon ARCHITECTS
 29 Back Point Road
 Scarborough, Maine 04074
 www.gawronturgeon.com
 207-883-4307 or 207-883-0361 fax

Olympia Development, LLC
 300 Fore Street, First Floor
 Portland, Maine

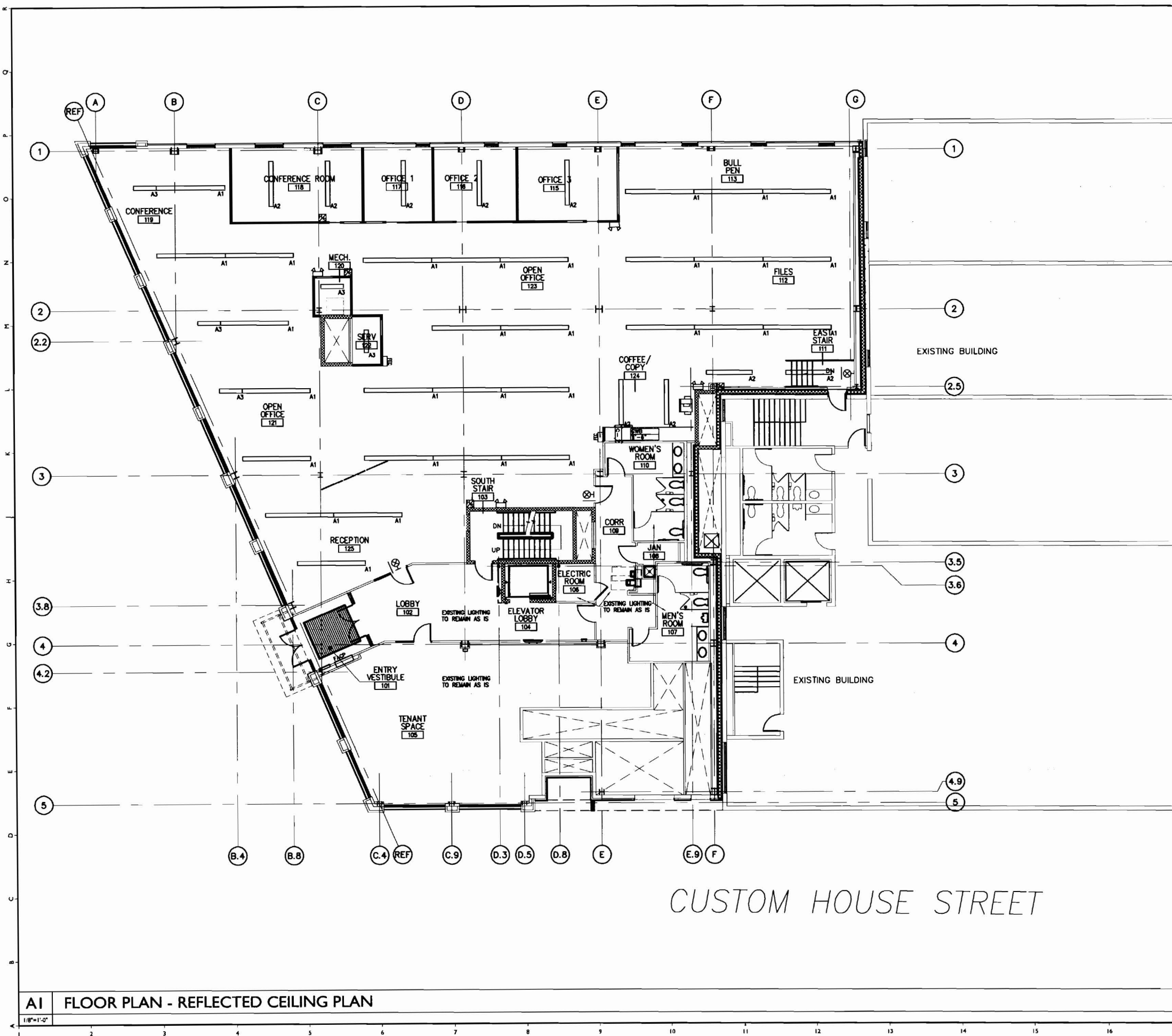
REVISIONS	
#	DATE DESCRIPTION
1	1-22-09 PLANNING SET

DATE	01.19.09
PROJECT #	010309
DRAWN BY:	LAP
CHECKED BY:	MET
DRAWING SCALE	AS NOTED

SHEET TITLE
 FLOOR PLAN- REFLECTED CEILING PLAN
 LEGEND

A301

© COPYRIGHT 1985-2008
 REPRODUCTION OR USE OF THIS
 DOCUMENT WITHOUT WRITTEN
 PERMISSION OF GAWRON TURGEON
 ARCHITECTS IS PROHIBITED



- LIFE SAFETY SYMBOL LEGEND**
- FIRE ALARM HORN AND STROBE UNIT -- MOUNT 84" AFF TO BOTTOM OF BOX OR 6" BELOW CEILING, WHICH EVER IS LOWER. NUMERALS DENOTE CANDELA RATING
 - EXIT SIGN - WALL MOUNTED
 - EMERGENCY BATTERY UNIT WITH TWO HEADS
 - FIRE EXTINGUISHER CABINET

- LIGHTING LEGEND**
- 12' DIRECT/INDIRECT LINEAR FLUORESCENT W/PERFORATED REFLECTOR 277V FINELITE SERIES 12 3-FSATHSHD 3500K AIRCRAFT CABLE
 - 8' DIRECT/INDIRECT LINEAR FLUORESCENT W/PERFORATED REFLECTOR 277V FINELITE SERIES 12 2-FSATHSHD 3500K AIRCRAFT CABLE
 - 4' DIRECT/INDIRECT LINEAR FLUORESCENT W/PERFORATED REFLECTOR 277V FINELITE SERIES 12 1-FSATHSHD 3500K AIRCRAFT CABLE

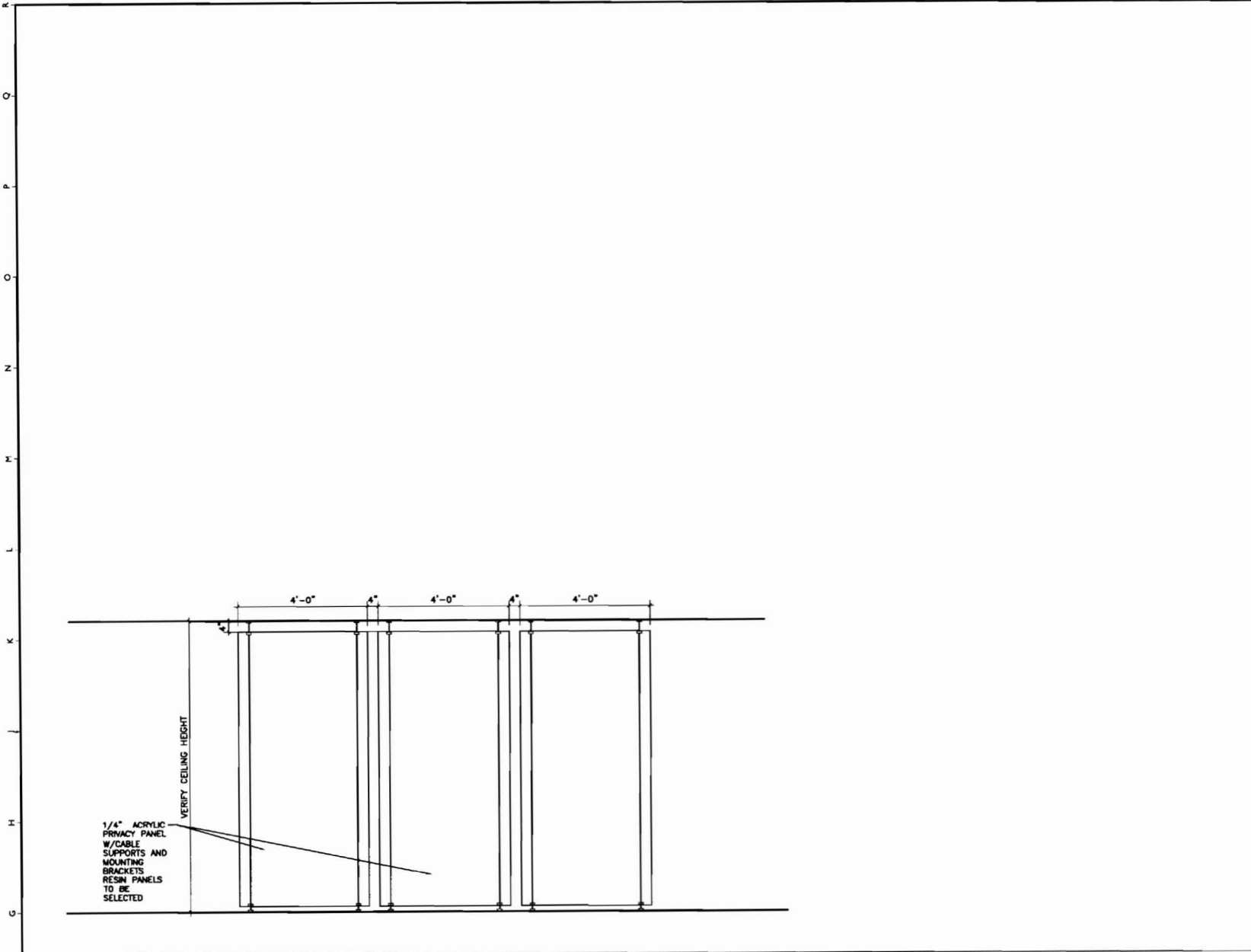
- NOTES:**
1. INTERIOR FIXTURE LEGEND FOR DESIGN INTENT ONLY. REFER TO ELECTRICAL DRAWINGS FOR LIGHT FIXTURE TYPES AND CIRCUITING.
 2. MECHANICAL SUBCONTRACTOR TO VERIFY SIZE AND LOCATION OF ANY MECHANICAL REGISTERS WITH ARCHITECT PRIOR TO CONSTRUCTION.
 3. SWITCH ALL OFFICES INDEPENDENTLY.
 4. ELECTRICAL CONTRACTOR SHALL COORDINATE OWNER SUPPLIED TELEPHONE & DATA BOXES WITH LOCATIONS OF OUTLETS.
 5. ELECTRICAL CONTRACTOR SHALL SUPPLY POWER & COORDINATE WITH ALL OWNER SUPPLIED EQUIPMENT.

A1 FLOOR PLAN - REFLECTED CEILING PLAN

A17 LEGEND

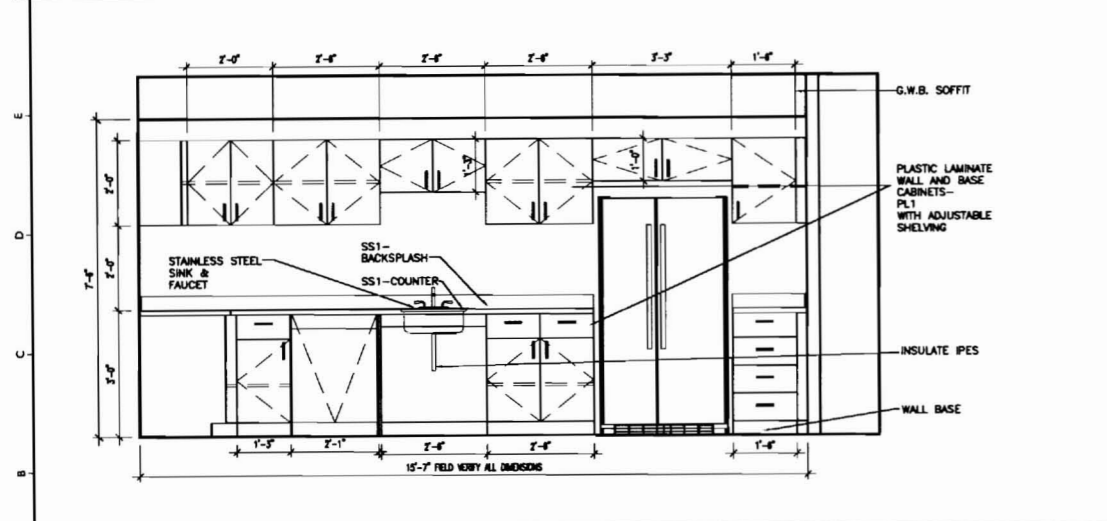


Olympia Development, LLC
 300 Fore Street, First Floor
 Portland, Maine



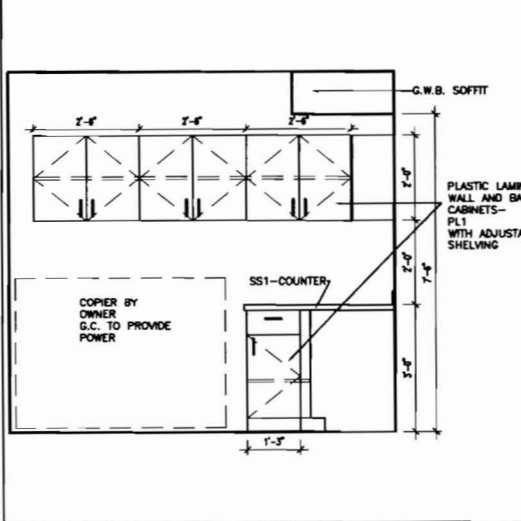
FI INTERIOR ELEVATION

1/2"=1'-0" RECEPTION 123



A1 INTERIOR ELEVATION

1/2"=1'-0" COFFEE/COPY 124

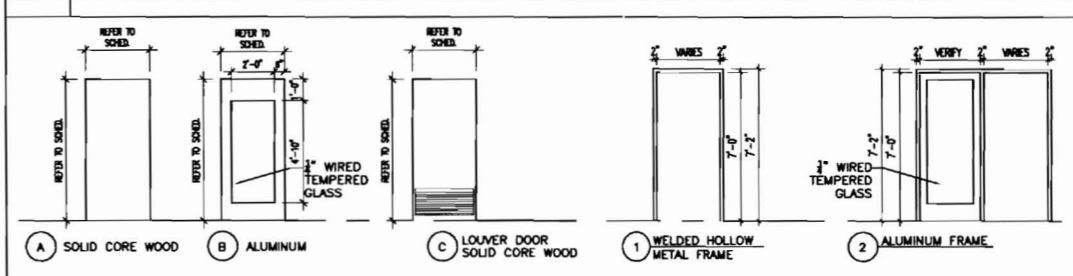


A9 INTERIOR ELEVATION

1/2"=1'-0" COFFEE/COPY 124

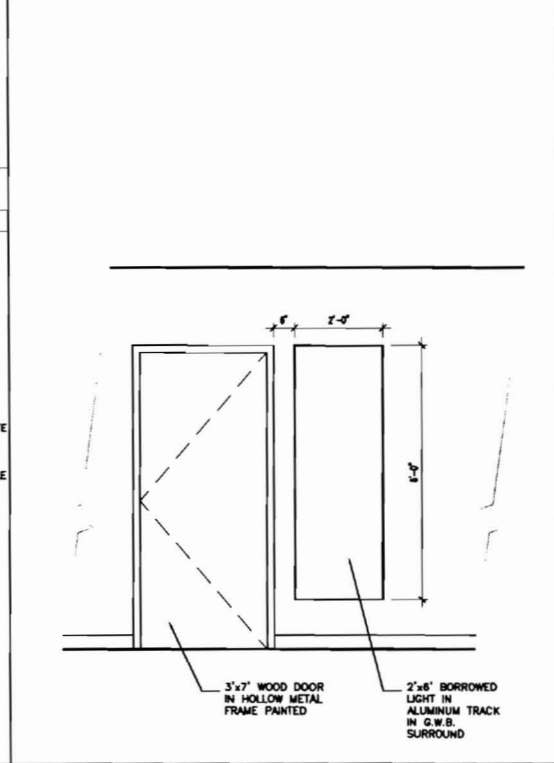
NOTES:
 1. ALL NEW DOOR HARDWARE TO MATCH EXISTING BUILDING STANDARDS
 2. COORDINATE KEYING SCHEDULE W/OWNER

L13 DOOR SCHEDULE



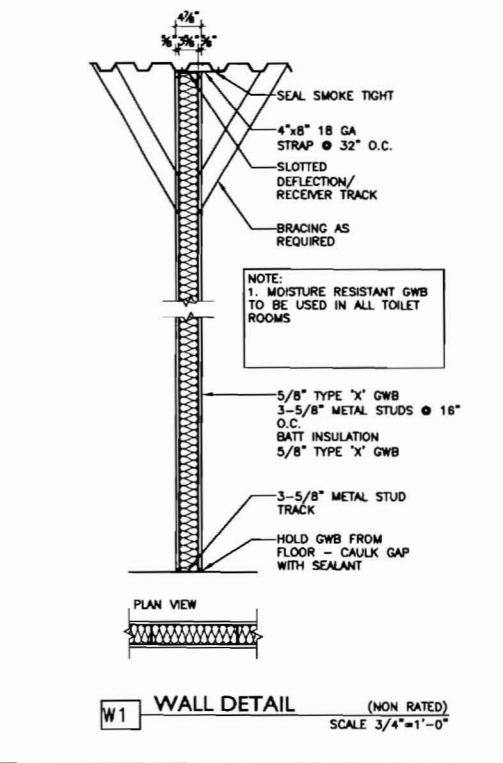
H13 DOOR & FRAME TYPES

1/4"=1'-0"



A13 TYPICAL ELEVATION AT OFFICES

1/2"=1'-0"



A17 WALL TYPE

3/4"=1'-0" (NON RATED) SCALE 3/4"=1'-0"

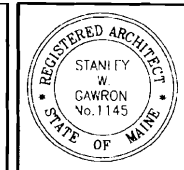
REVISIONS		
#	DATE	DESCRIPTION
1	1-23-09	REPEAT SET

DATE	01.19.09
PROJECT #	010309
DRAWN BY:	LAP
CHECKED BY:	MET
DRAWING SCALE	AS NOTED

SHEET TITLE
 DOOR SCHEDULE,
 WALL PARTITIONS
 & INTERIOR ELEVATIONS

A901

© COPYRIGHT 1985-2008
 STANLEY W. GAWRON OR AS A RESULT OF THIS
 DOCUMENT IS NOT TO BE REPRODUCED OR
 TRANSMITTED IN ANY FORM OR BY ANY
 MEANS, ELECTRONIC OR MECHANICAL,
 INCLUDING PHOTOCOPYING, RECORDING,
 OR BY ANY INFORMATION STORAGE AND
 RETRIEVAL SYSTEM, WITHOUT THE
 EXPRESS WRITTEN PERMISSION OF GAWRON TURGEON
 ARCHITECTS, INC.



Olympia Development, LLC
 300 Fore Street, First Floor
 Portland, Maine

REVISIONS		
#	DATE	DESCRIPTION
1	1-23-09	PERMIT SET

DATE	01.19.09
PROJECT #	010309
DRAWN BY:	LAP
CHECKED BY:	MIET
DRAWING SCALE	AS NOTED

SHEET TITLE
 INTERIOR FINISHES
 LEGEND AND SCHEDULE

A902

© COPYRIGHT 1983-2008
 REPRODUCTION OR BASED ON THIS
 DOCUMENT WITHOUT WRITTEN
 PERMISSION OF GAWRON TURGEON
 ARCHITECTS IS PROHIBITED

INTERIOR FINISH LEGEND					ABBREVIATIONS	
010309					C	T
OLYMPIA DEVELOPMENT					NA	TBS
CODE	MATERIAL	MANUFACTURER	PRODUCT, STYLE AND COLOR	FINISH	SYD	TO BE SELECTED
C1	CARPET	SHAW CONTRACT GROUP	ANGELA ADAMS COLLECTION PORTLAND 60596, COLOR: 96305 URCHIN	FACTORY	BROADLOOM	VINYL COVE BASE
C2	CARPET	SHAW CONTRACT GROUP	ANGELA ADAMS COLLECTION HAVEN 58447, COLOR: 96305 URCHIN	FACTORY	TILE, INSTALL 1/4 TURN WHEN MIXED WITH OTHER TILES. INSTALL MONOLITHIC WHEN INSTALLED ALONE.	VINYL COMPOSITE TILE
C3	CARPET	SHAW CONTRACT GROUP	ANGELA ADAMS COLLECTION PORTLAND 58448, COLOR: 96305 URCHIN	FACTORY	TILE, INSTALL 1/4 TURN WHEN MIXED WITH OTHER TILES. INSTALL MONOLITHIC WHEN INSTALLED ALONE.	VINYL STRAIGHT BASE
C4	CARPET	SHAW CONTRACT GROUP	ANGELA ADAMS COLLECTION JIM 58448, COLOR: 96305 URCHIN	FACTORY	TILE, INSTALL 1/4 TURN WHEN MIXED WITH OTHER TILES. INSTALL MONOLITHIC WHEN INSTALLED ALONE.	WALL COVERING (VINYL PAPER)
C8	CARPET	SHAW CONTRACT GROUP	ANGELA ADAMS COLLECTION CASCO 58448, COLOR: 96305 URCHIN	FACTORY	TILE, INSTALL 1/4 TURN WHEN MIXED WITH OTHER TILES. INSTALL MONOLITHIC WHEN INSTALLED ALONE.	WALL COVERING BORDER (VINYL PAPER)
VCT1	VINYL COMPOSITION TILE	ARMSTRONG IMPERIAL TEXTURE	STANDARD EXCELON, 51866 SANDRIFT WHITE	SEALED	PATTERN RANDOM, 33% EACH COLOR	WOOD
VCT2	VINYL COVE BASE	ARMSTRONG IMPERIAL TEXTURE	STANDARD EXCELON, 51938 YELLOW GREEN	SEALED	PATTERN RANDOM, 33% EACH COLOR	
VCT3	VINYL COVE BASE	ARMSTRONG IMPERIAL TEXTURE	STANDARD EXCELON, 51866 LITTLE GREEN APPLE	SEALED	PATTERN RANDOM, 33% EACH COLOR	
P1	PAINT	BENJAMIN MOORE	COLOR PREVIEW, WHITE DOVE	EGGSHELL		
P2	PAINT	BENJAMIN MOORE	COLOR PREVIEW, HOMESTEAD GREEN AC-19	EGGSHELL		
P3	PAINT	BENJAMIN MOORE	COLOR PREVIEW, CASTLETON MIST HC-1	EGGSHELL		
P4	PAINT	BENJAMIN MOORE	COLOR PREVIEW, PHILADELPHIA CREAM HC-30	SEMI-GLOSS (OIL BASED)	ALL DOOR FRAMES TO BE PAINTED P4	
P6	PAINT	BENJAMIN MOORE	COLOR PREVIEW, PHILADELPHIA CREAM HC-30	EGGSHELL		
SS1	SOLID SURFACE	AVONTE	STUDIO COLLECTION, ANTIQUE GLASS K3-8465 GLASS SERIES, SATIN	SATIN	BACK PAINT WHITE PER AVONTE GLASS APPLICATION GUIDELINES	
VCB1	VINYL COVE BASE	JOHNSONITE	#79 BONE WHITE	FACTORY	FOR USE WITH GENERAL WALL COLOR P1 AND P5	
VCB2	VINYL COVE BASE	JOHNSONITE	#123 MINERAL SPRINGS	FACTORY	FOR USE WITH ACCENT PAINT P2	
VCB3	VINYL COVE BASE	JOHNSONITE	#122 CANDLEWICK	FACTORY	FOR USE WITH ACCENT PAINT P3	
PL1	PLASTIC LAMINATE	NEVAMAR	ARMORED PROTECTION, VIGNA VERDE PIAZZA TEXTURED PZ3001T	GLUE	PLASTIC LAMINATE CABINET FACES	
T1	TRANSITION STRIP	SCHLUTER	STAINLESS STEEL	FACTORY	TRANSITION BETWEEN CARPET AND VCT	

NOTE: 1. ALL CEILING TO BE PAINTED BRIGHT WHITE EGGSHELL FINISH

INTERIOR FINISH SCHEDULE															ABBREVIATIONS		
010309															C	SYD	
OLYMPIA DEVELOPMENT															NA	T	
Room Information		Floor		Walls					Trim			Countertop/Worksurface/Cabinets		Cubical/Curtains		Remarks	
Room #	Room Name	Floor	Grout	North Wall	East Wall	South Wall	West Wall	Wainscoting	Base	Decorative Trim(s)	Door(s)	Door frame	Horizontal Plane	Vertical Plane	Required		
First Floor Plan																	
101	ENTRY VESTIBULE																
102	LOBBY																
103	SOUTH STAIR																TOUCH UP PAINT AT WEST WALL DUE TO NEW DOOR INSTALLATION
104	ELEVATOR LOBBY																
105	TENANT SPACE																
106	ELECTRIC ROOM																
107	MENS ROOM																
108	JANITOR																
109	CORRIDOR																
110	WOMENS ROOM																
111	EAST STAIR																
112	FILES																
113	BULL PEN																
114	NOT USED																
115	OFFICE 3																VCB3 AT RAJACCENT WALL ONLY
116	OFFICE 2																VCB3 AT RAJACCENT WALL ONLY
117	OFFICE 1																VCB2 AT P2 ACCENT WALL ONLY
118	CONFERENCE ROOM																
119	CONFERENCE																
120	MECHANICAL																
121	OPEN OFFICE																
122	SERVER																
123	OPEN OFFICE																
124	COFFEE/COPY																
125	RECEPTION																RESIN PANELS TO BE SELECTED

1. ALL FINISHES TO BE PERFORMED UNDER THE SUPERVISION OF THE ARCHITECT.
 2. ALL FINISHES TO BE PERFORMED UNDER THE SUPERVISION OF THE ARCHITECT.
 3. ALL FINISHES TO BE PERFORMED UNDER THE SUPERVISION OF THE ARCHITECT.

AI INTERIOR FINISH LEGEND & SCHEDULE