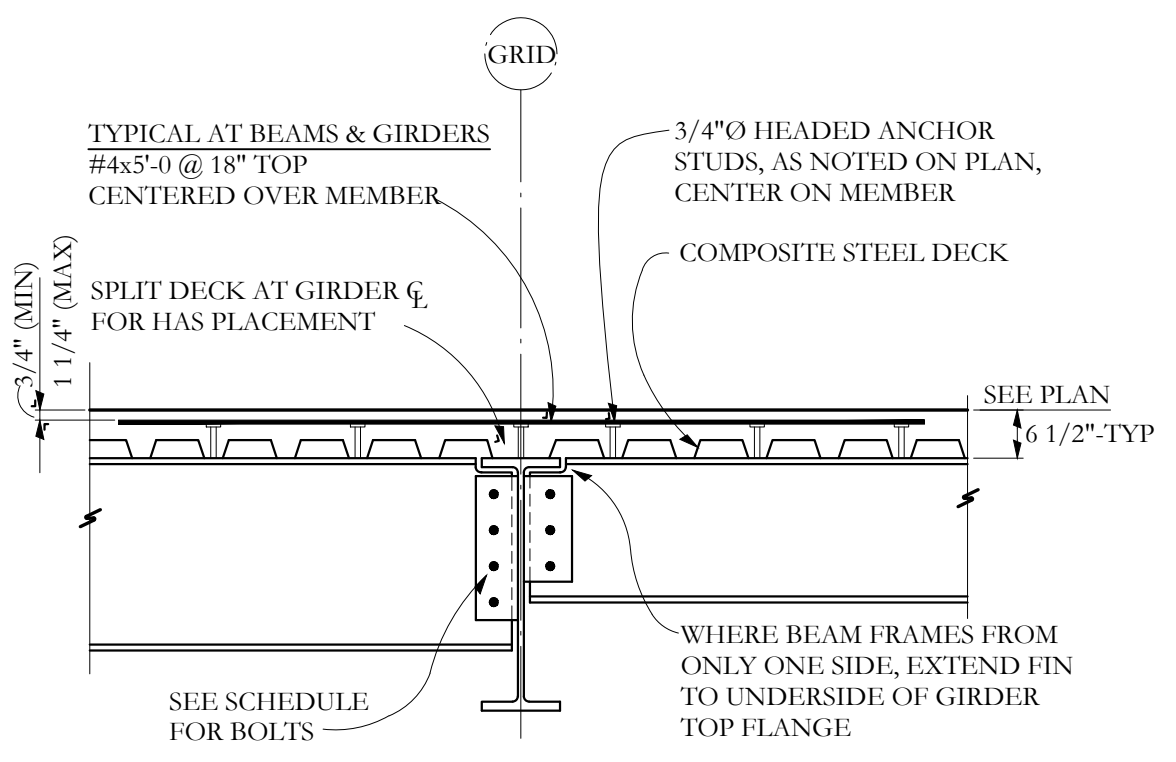


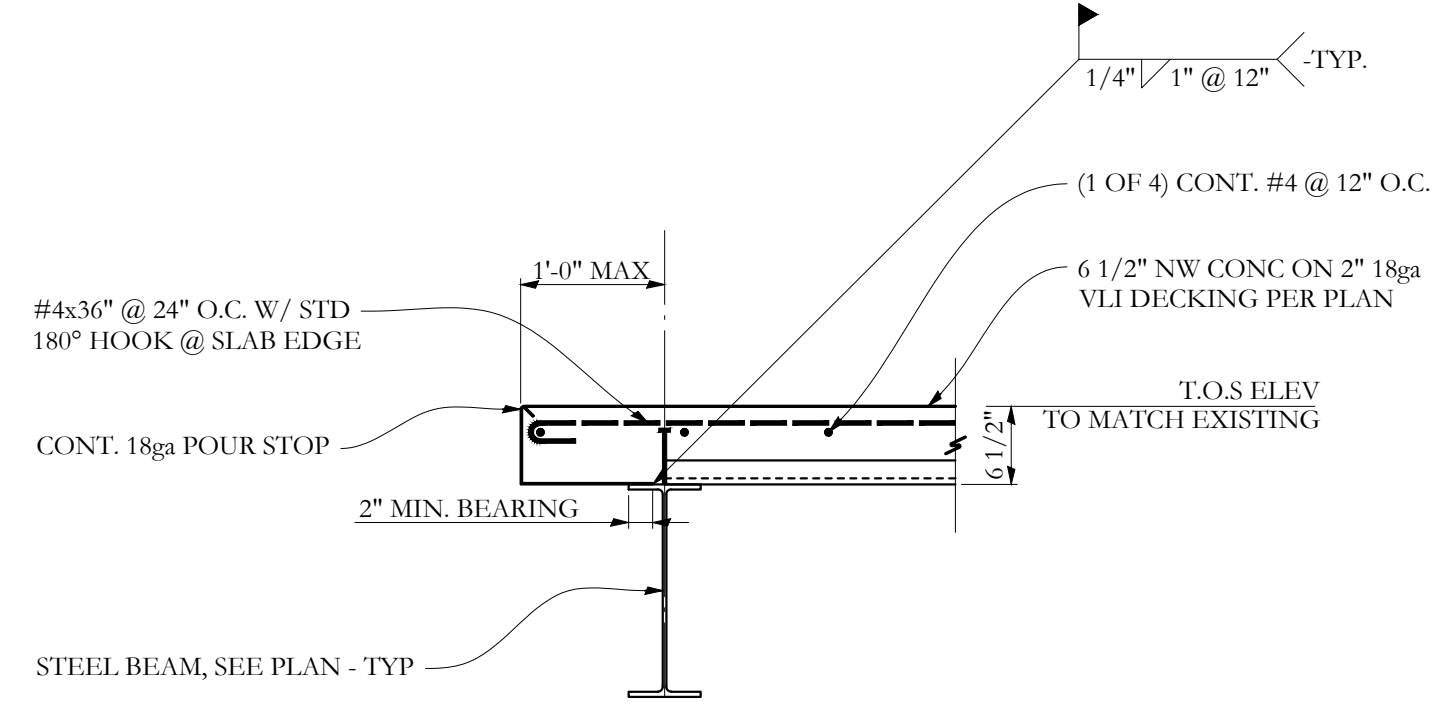
SECTION **G** S-2.1 3/4"=1'-0



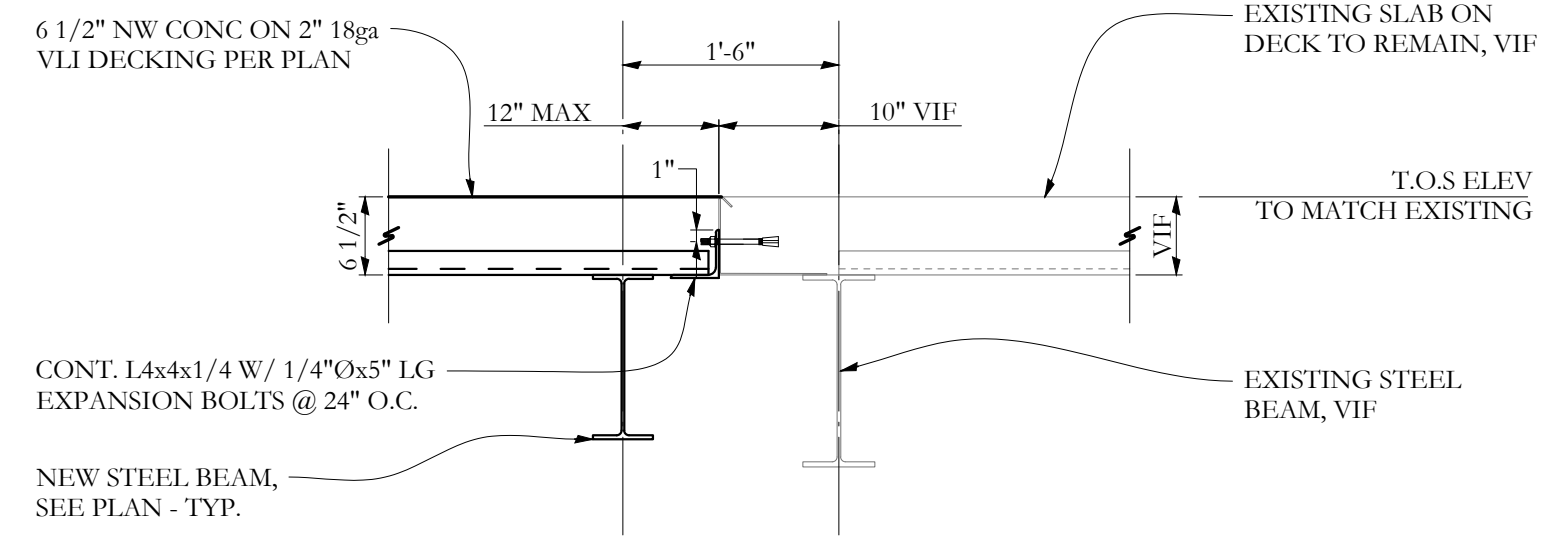
AT GIRDER-TO-GIRDER CONNECTIONS OR WHERE SCHEDULED NUMBER OF BOLTS CANNOT BE INSTALLED AT TYPICAL CONNECTION, PROVIDE DOUBLE L3 1/2"x3 1/2"x3 1/4" BOLTED TO BOTH SUPPORTING & SUPPORTED MEMBERS WEBS

TYPICAL COMPOSITE BEAM AND SLAB ASSEMBLY
SECTION **H** S-2.1 3/4"=1'-0

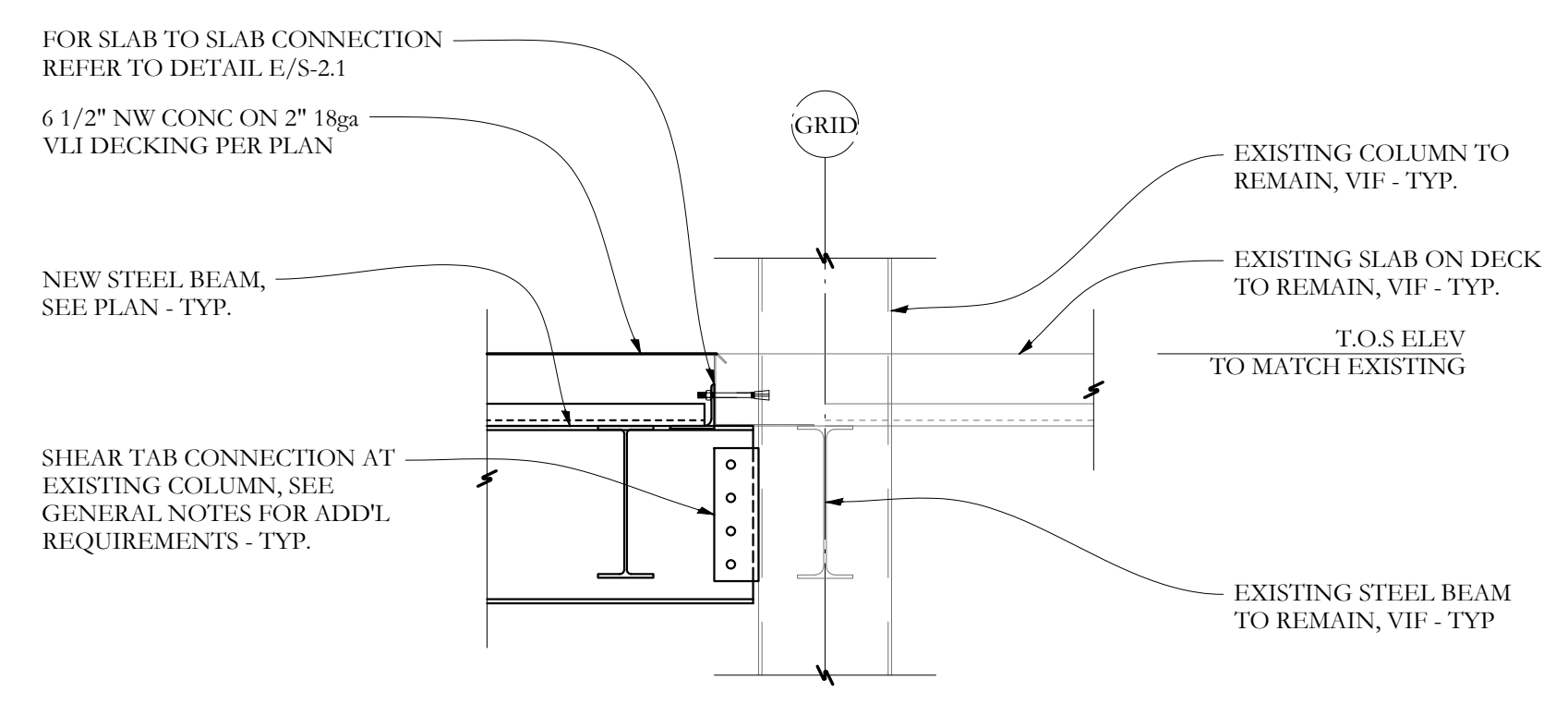
SECTION **J** S-2.1 3/4"=1'-0



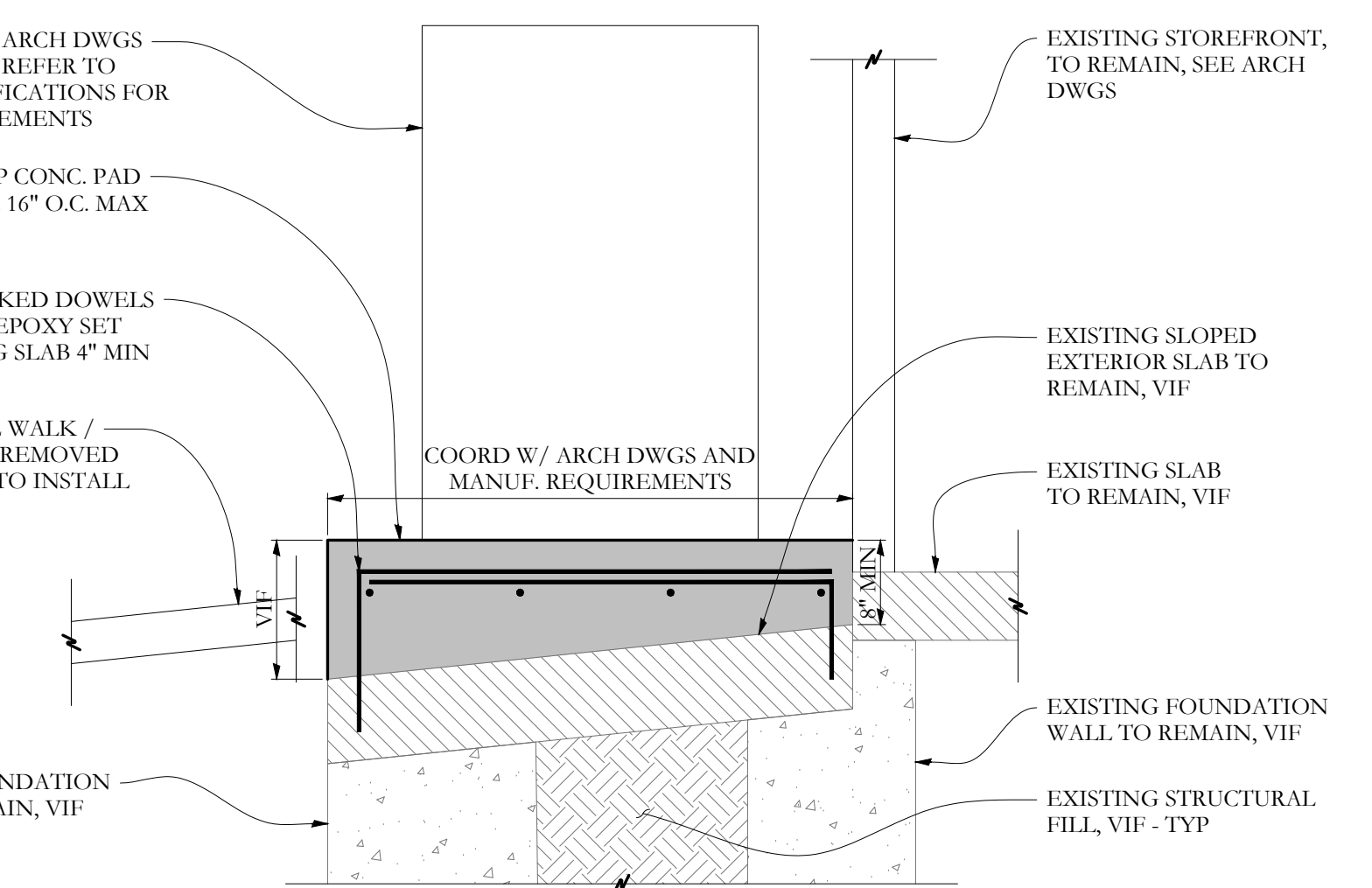
SECTION **D** S-2.1 3/4"=1'-0



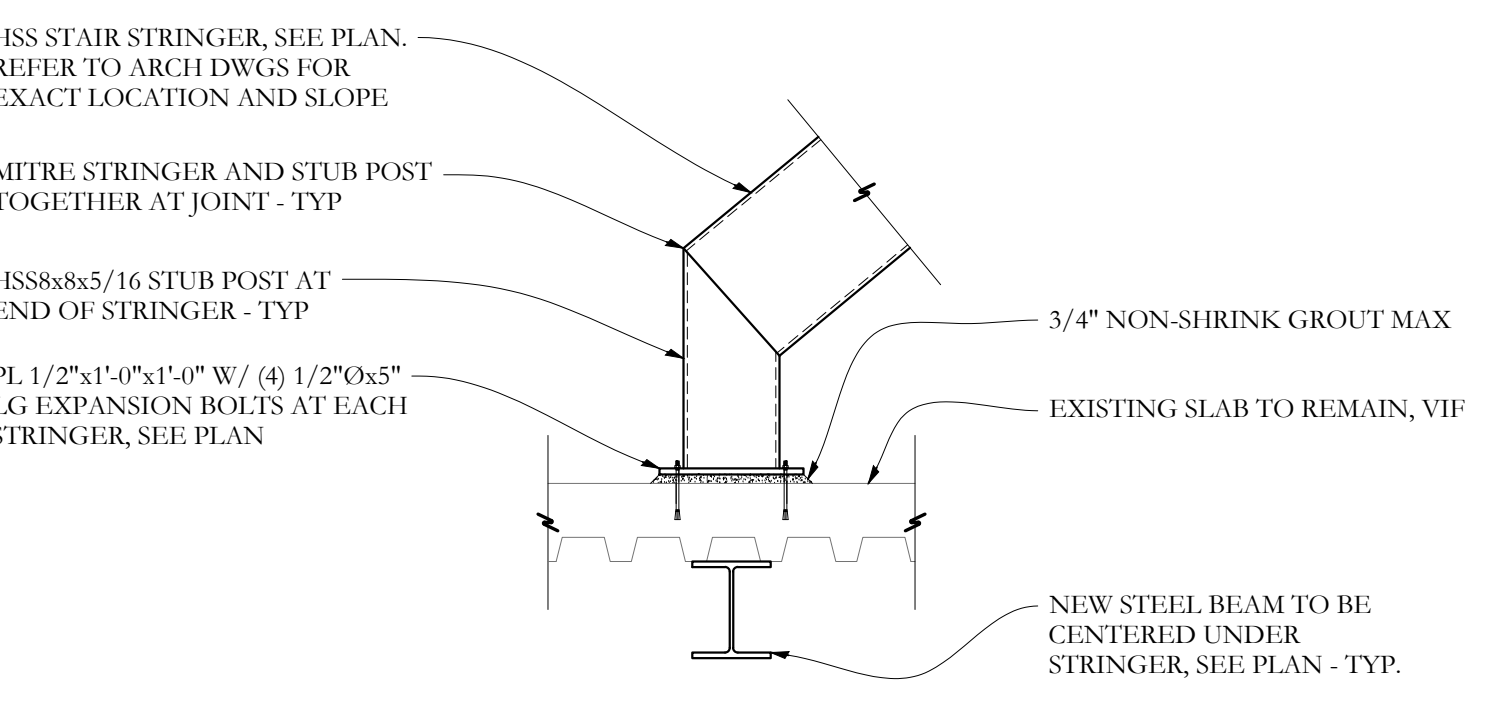
SECTION **E** S-2.1 3/4"=1'-0



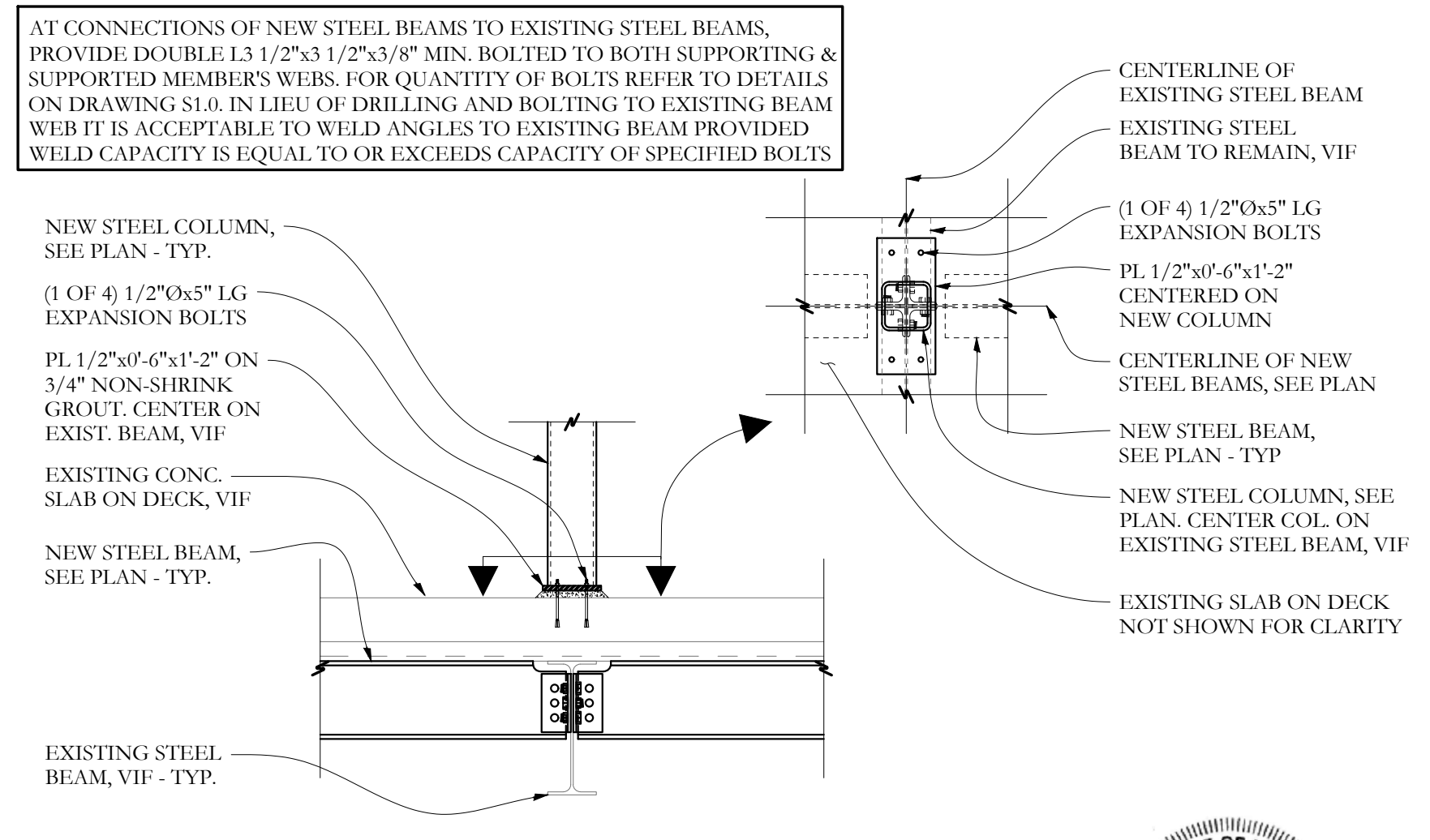
SECTION **F** S-2.1 3/4"=1'-0



SECTION **A** S-2.1 3/4"=1'-0



SECTION **B** S-2.1 3/4"=1'-0



SECTION **C** S-2.1 3/4"=1'-0

Structural Integrity
Consulting Engineers, Inc. BUILD WITH CONFIDENCE
77 Oak Street
Portland, ME 04101
p. 207-774-4614
f. 866-793-7835
www.structuralintegrity.com
SI # 16-0024
©2016 Structural Integrity Consulting Engineers, Inc.

NO.	DATE	DESCRIPTION

FOR CONSTRUCTION
02.13.18

TAC Architectural
Group Inc.

BANGOR SAVINGS BANK -
RENOVATIONS TO 280 FORE
STREET
PORTLAND, MAINE

PROJECT NO:	16-226
CAD DWG FILE:	
DRAWN BY:	CJO
CHK'D BY:	ACJ
COPYRIGHT:	2018

SHEET TITLE
DETAILS
S2.1

