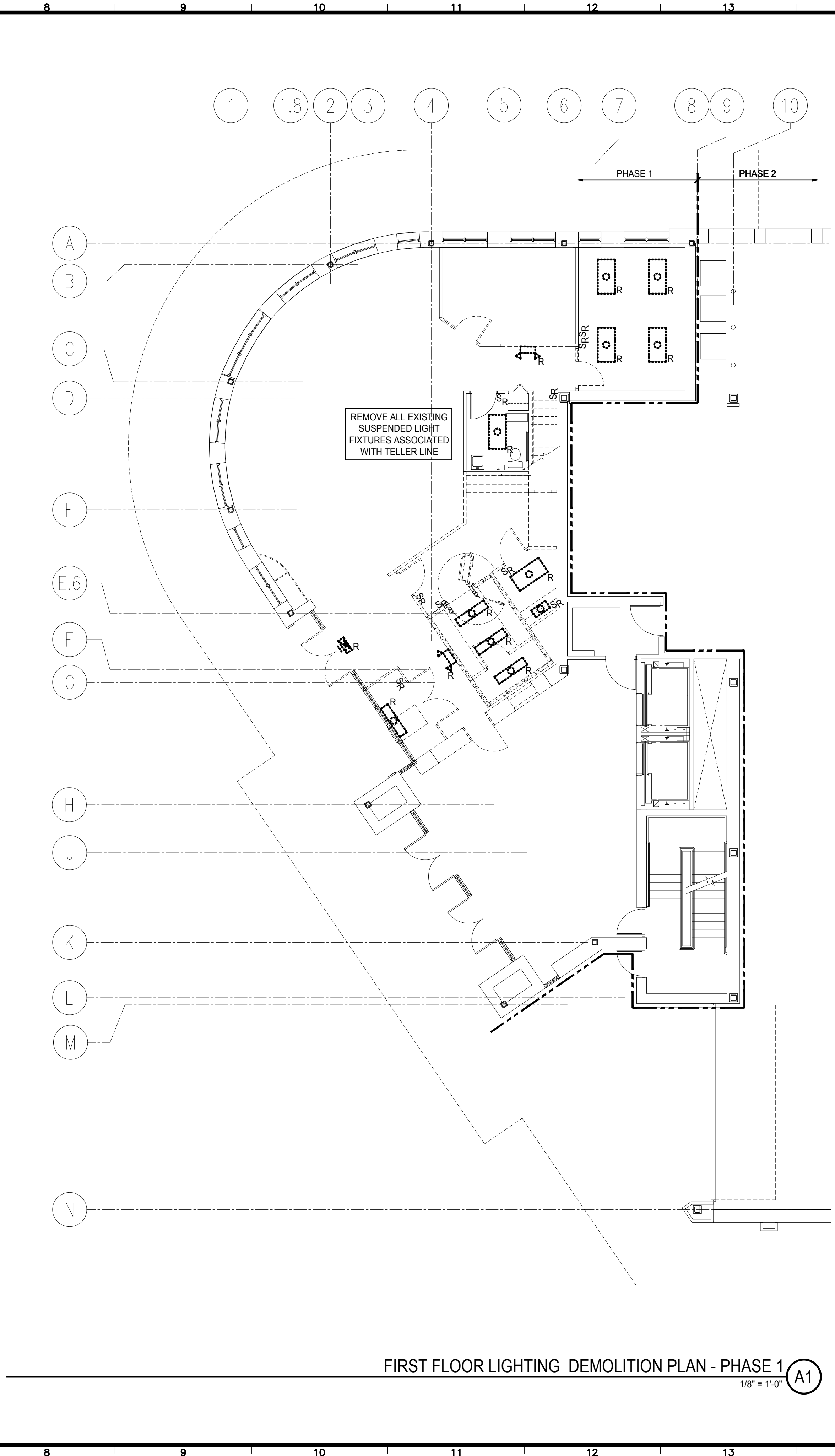


FIRST FLOOR POWER AND SYSTEMS DEMOLITION PLAN - PHASE 1
1/8" = 1'-0" A9



FIRST FLOOR LIGHTING DEMOLITION PLAN - PHASE 1
1/8" = 1'-0" A1

NOTE:

- SEE SHEET E-001 FOR LEGEND AND GENERAL NOTES.
- ALL SECURITY DEMOLITION SHALL BE COORDINATED WITH CAYER SECURITY.

KEYED NOTE:

- REMOVE EXISTING FLOOR BOXES IN THEIR ENTIRETY. COMMUNICATION DEVICES SHALL BE REMOVED AND CABLES SHALL BE REMOVED BACK TO PATCH PANEL. ANY RECEPTACLES (REGULAR AND IG RATED) SHALL BE REMOVED WITH ASSOCIATED CONDUCTORS AND CONDUIT BEING REMOVED BACK TO PANELBOARD. ASSOCIATED CIRCUIT BREAKER SHALL BE TURNED OFF AND LABELED SPARE. CONCRETE SHALL BE PATCHED AFTER REMOVAL OF CONDUITS.
- REMOVE RECEPTACLES ASSOCIATED WITH ALARM SYSTEM. FIELD COORDINATE EXACT LOCATION.
- EXISTING ELECTRIC UNIT HEATER TO BE REMOVED - REMOVE ALL ASSOCIATED ELECTRICAL DEVICES (SWITCH, DISCONNECT, ETC.) AND WIRING. CONDUCTORS AND CONDUIT SHALL BE REMOVED BACK TO PANELBOARD. IF THERE IS NO LONGER LOAD CONNECTED TO BREAKER, CIRCUIT BREAKER SHALL BE TURNED OFF AND LABELED SPARE.
- EXISTING CONDENSING UNIT TO BE REMOVED - REMOVE ALL ASSOCIATED ELECTRICAL DEVICES (SWITCH, DISCONNECT, ETC.) AND WIRING. CONDUCTORS AND CONDUIT SHALL BE REMOVED BACK TO PANELBOARD. IF THERE IS NO LONGER LOAD CONNECTED TO BREAKER, CIRCUIT BREAKER SHALL BE TURNED OFF AND LABELED SPARE.
- REMOVE ALL ELECTRICAL CONNECTIONS FORMERLY ASSOCIATED WITH THE REMOTE TELLER STATION.
- EXISTING ATM TO BE REMOVED - REMOVE POWER, DATA, AND SECURITY SERVICES TO MACHINE AND PREPARE FOR EXTENSION TO NEW ATM LOCATION.

NO.	DATE	DESCRIPTION
0	02.13.18	ISSUED FOR CONSTRUCTION

ISSUED FOR CONSTRUCTION
02.13.18

SMRT Architects and Engineers
144 Fore Street
Portland, Maine 04104
1.877.700.7678
www.smrtinc.com

TAC Architectural Group Inc.
40 Summer St., Suite 4 Bangor, ME 04401

PROJECT NORTH:

BANGOR SAVINGS BANK - RENOVATIONS TO 280 FORE STREET PORTLAND, MAINE

PROJECT NO: 17231
CAD DWG FILE: ED101-17231
DRAWN BY: LJW
CHK'D BY: LJW
COPYRIGHT: 2018

FIRST FLOOR ELECTRICAL DEMOLITION PLANS - PHASE 1

ED101