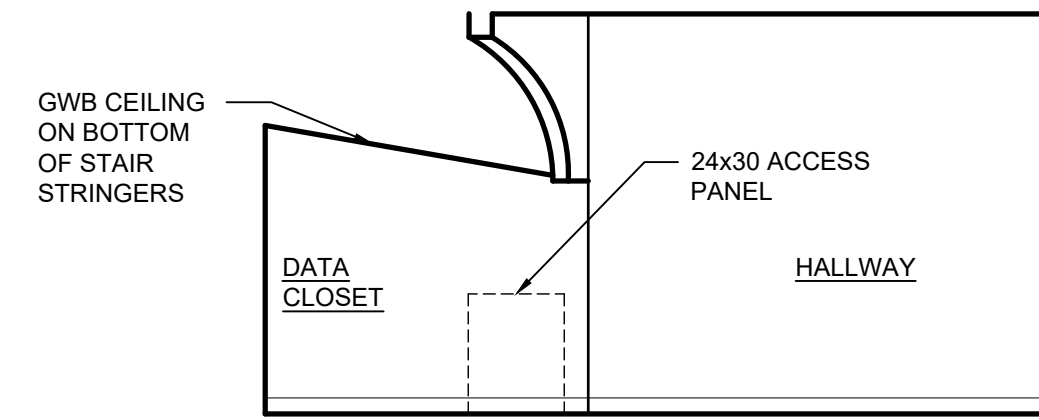
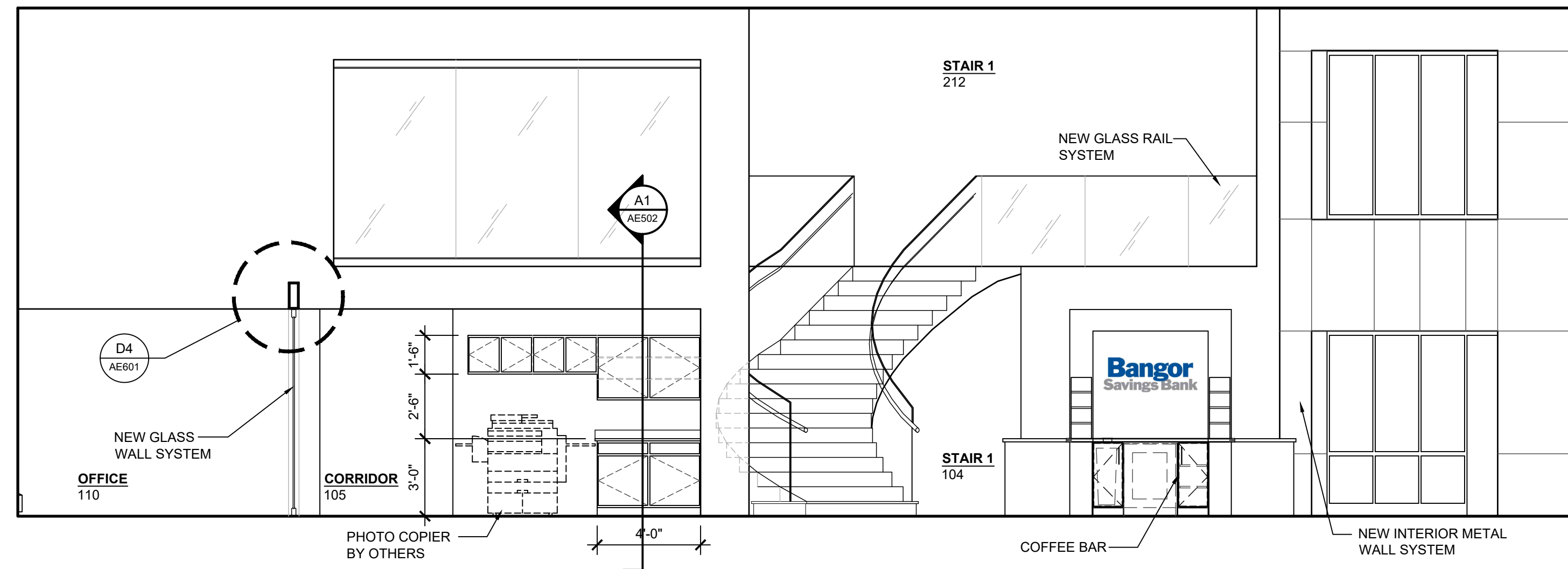


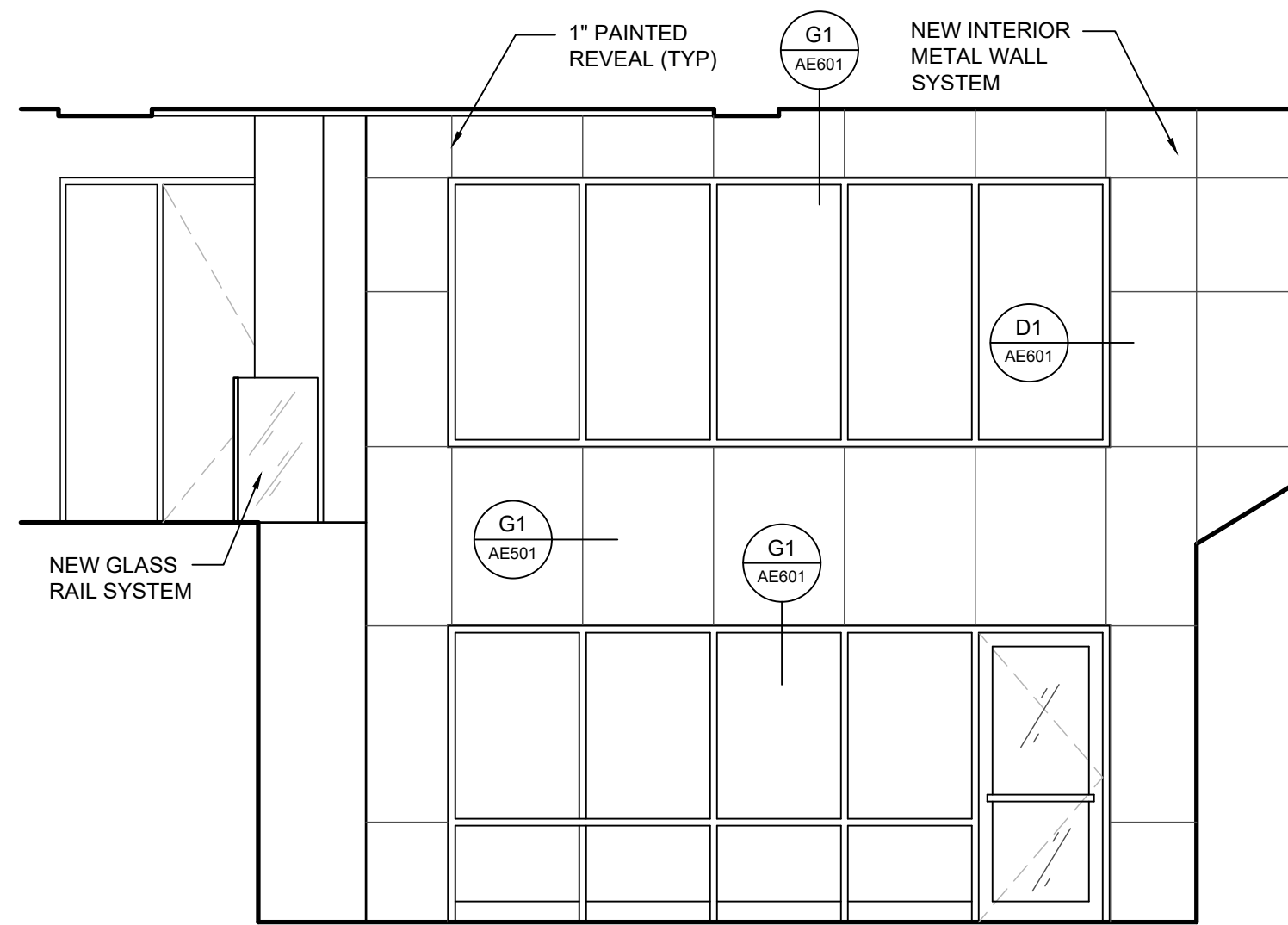
J1 DATA CLOSET
1/4" = 1'-0"



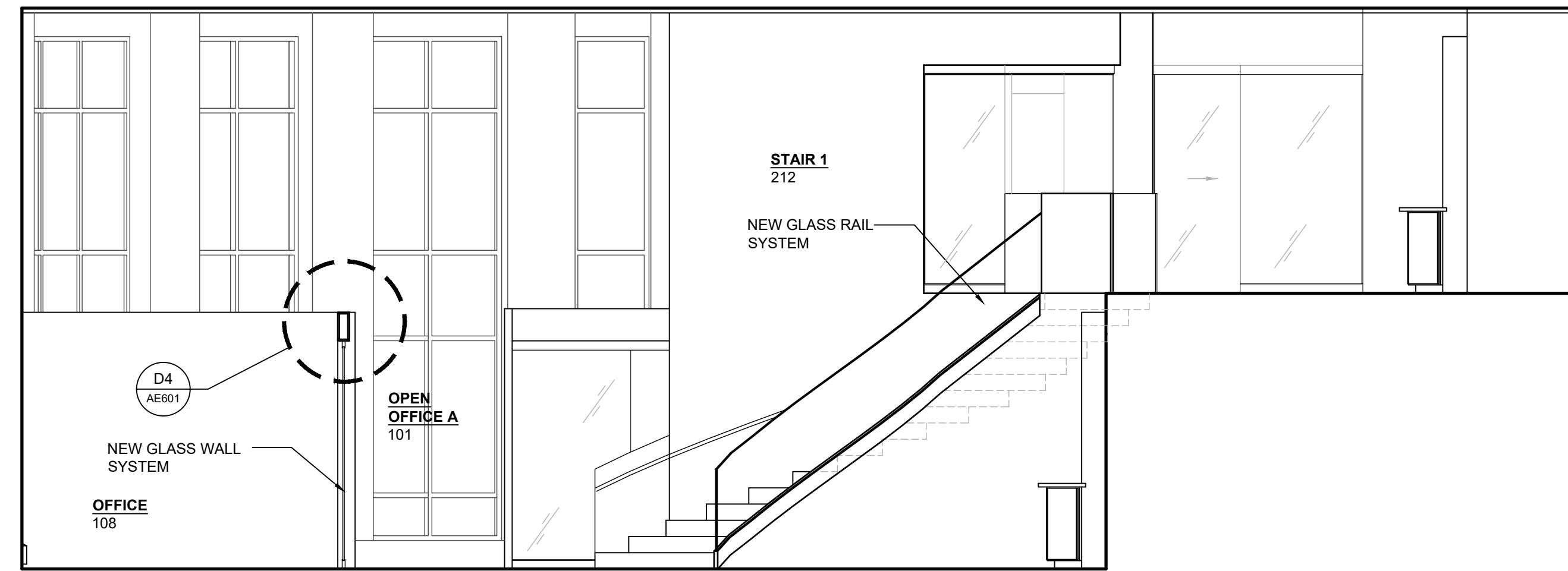
J4 INTERIOR ELEVATION - DATA CLOSET
1/4" = 1'-0"



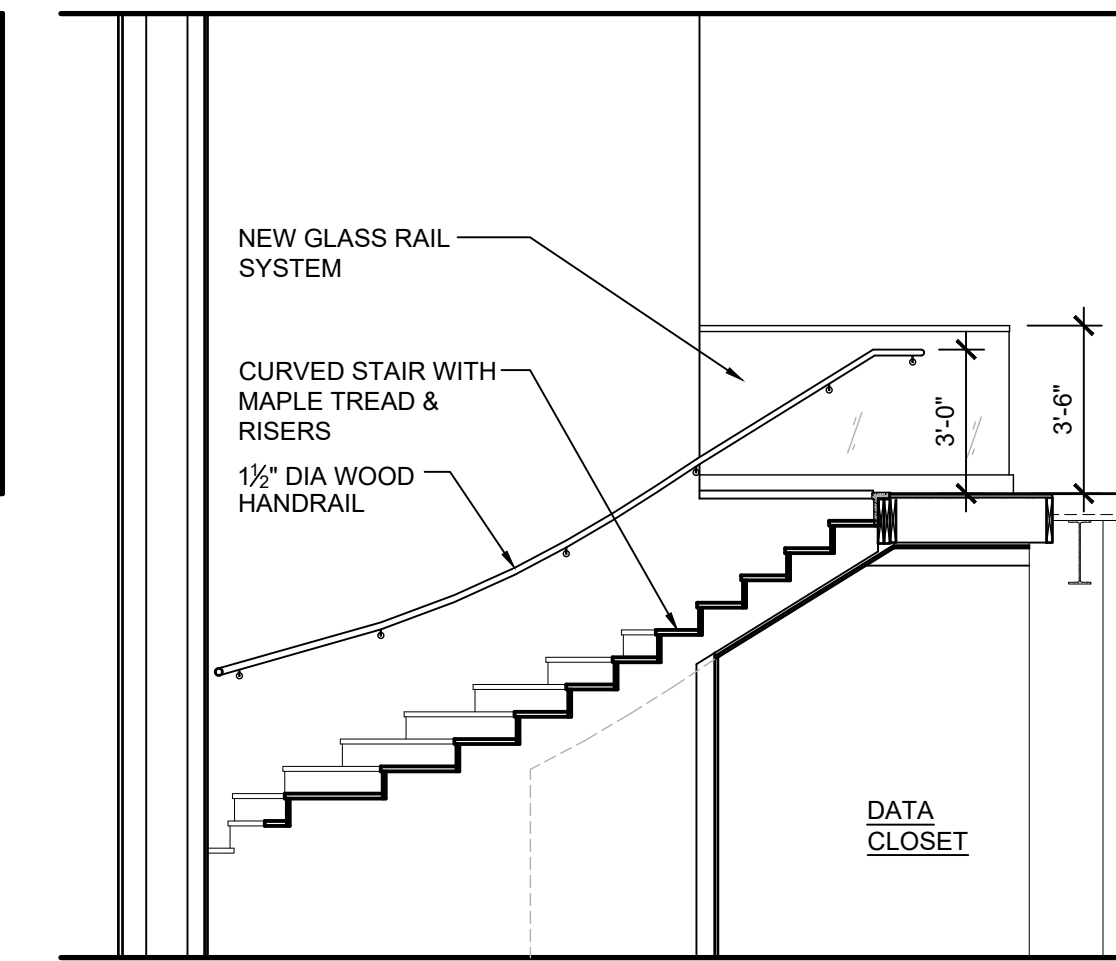
J7 INTERIOR ELEVATION
1/4" = 1'-0"



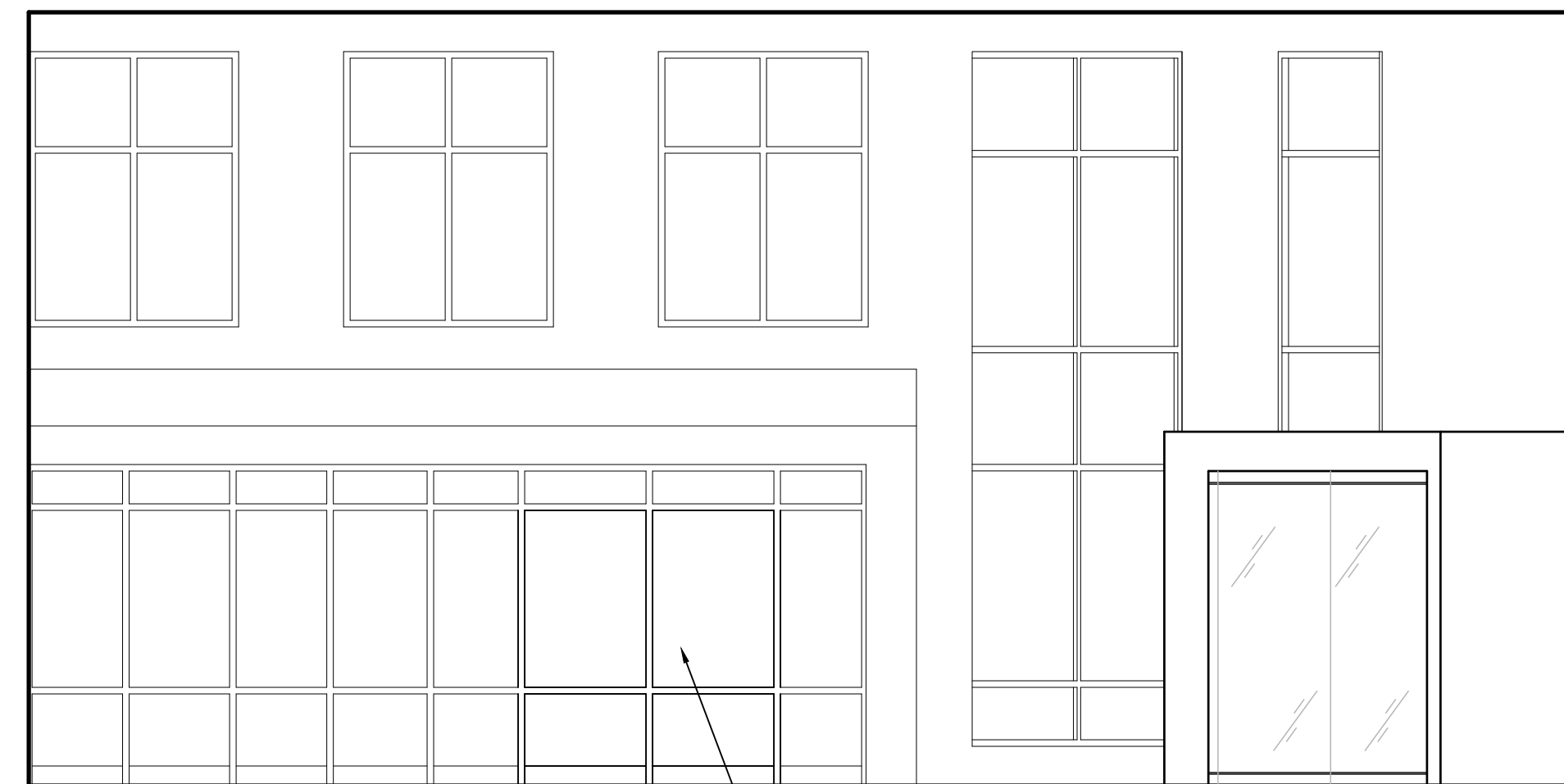
E1 WAITING 103
1/4" = 1'-0"



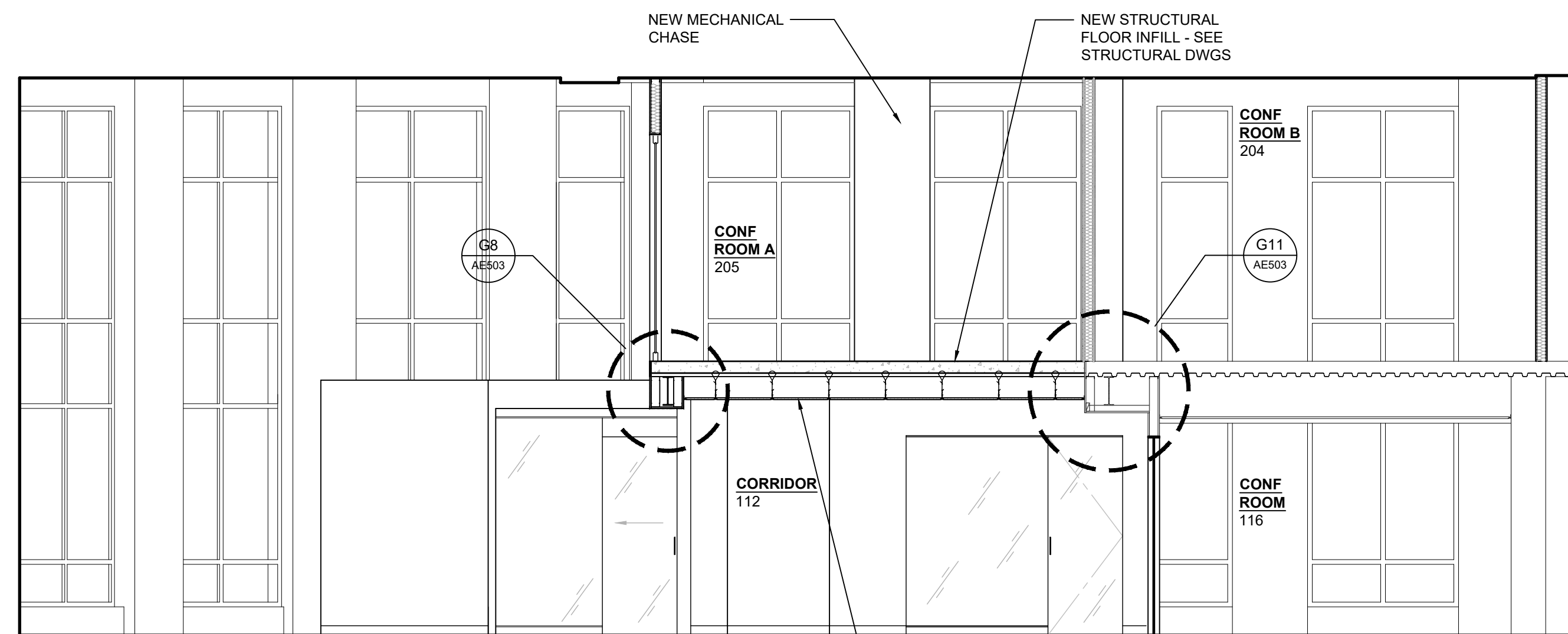
E5 BUILDING SECTION
1/4" = 1'-0"



E12 DATA CLOSET
1/4" = 1'-0"



A1 WAITING 103
1/4" = 1'-0"

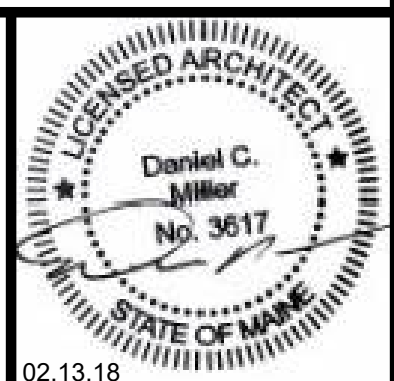


A7 BUILDING SECTION
1/4" = 1'-0"

NO.	DATE	DESCRIPTION
0	00.00.00	

FOR CONSTRUCTION
02.13.18

TAC Architectural
Group Inc.
40 Summer St., Suite 4 Bangor, ME 04401



BANGOR SAVINGS BANK - RENOVATIONS
TO 280 FORE STREET
PORTLAND, MAINE

PROJECT NO: 15-014
CAD DWG FILE: AE201 INTERIOR ELEVATIONS - PHASE 1.DWG
DRAWN BY: ###
CHK'D BY: ###
COPYRIGHT: 2018

SHEET TITLE
INTERIOR ELEVATIONS -
PHASE 1

AE201