

© 2016 RYAN SENATORE ARCHITECTURE

3RD FLOOR RENOVATION
280 FORE STREET
PORTLAND, MAINE



RYAN SENATORE
ARCHITECTURE
585 CONGRESS STREET
PORTLAND, MAINE 04101
207-650-6414
senatorearchitecture.com

CONSULTANTS:

REVISIONS:

DATE: 04 MARCH 2016

PROJECT No. 1607

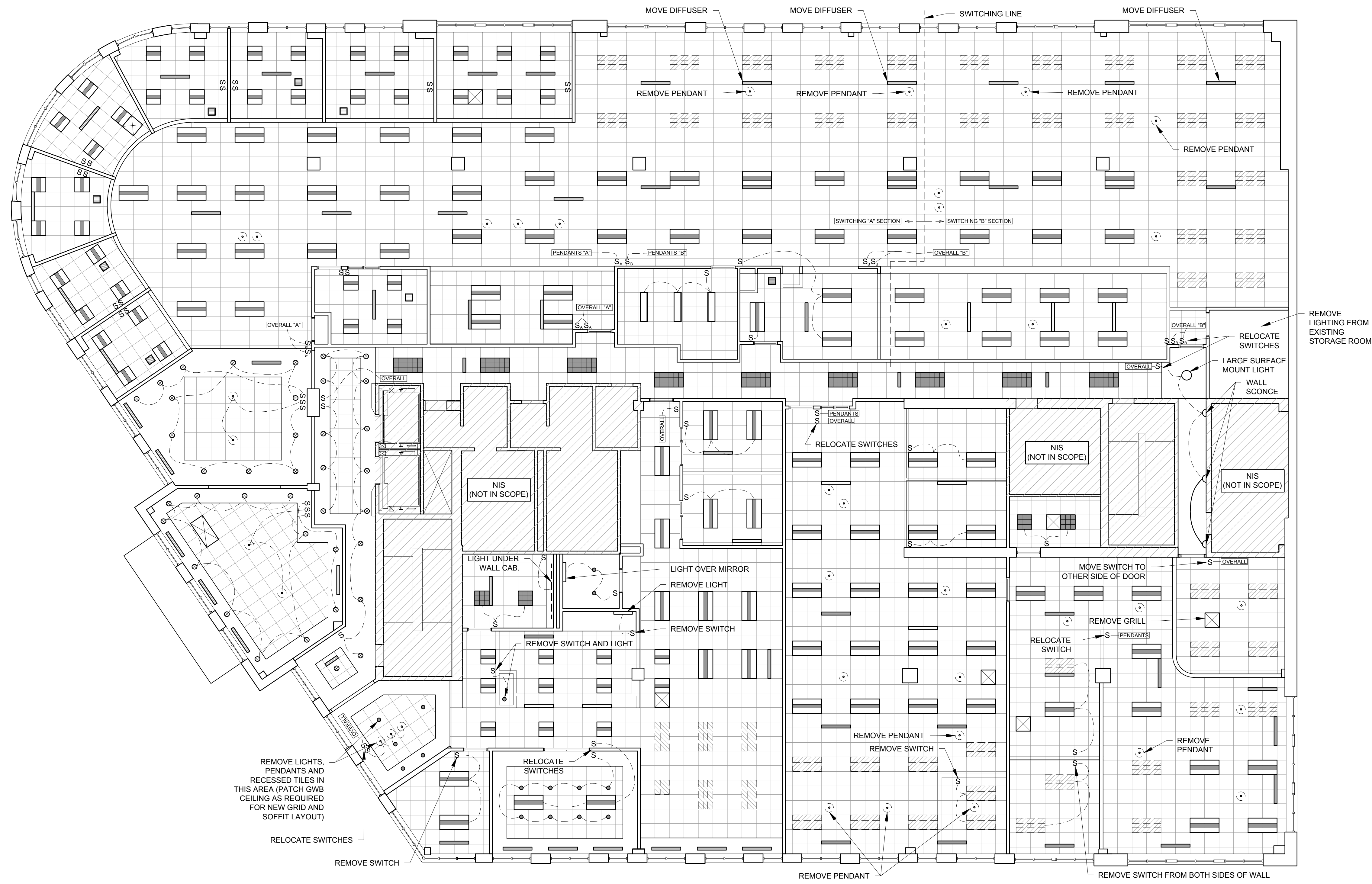
DRAWN BY: RRT

CHECKED BY: RJS

SCALE: AS NOTED

SHEET TITLE:
DEMO REFLECTED CEILING PLAN

AD-02



LEGEND	
S	LIGHT SWITCH
SS	SWITCHES IN OFFICE "SS" SWITCH LIGHTS IN OFFICE ONLY (1ST HALF POWER, 2ND FULL POWER)
[OVERALL]	SWITCHES ALL OVERHEAD LIGHTS (NOT INCLUDING PENDANTS) IN ANY GIVEN SPACE NOT INDICATED ON SPECIFIED SWITCHES
[PENDANTS]	SWITCHES ALL PENDANT LIGHTS IN ANY GIVEN SPACE NOT INDICATED ON SPECIFIED SWITCHES
[X]	2' X 2' GRILL IN CEILING
[X]	2' X 4' GRILL IN CEILING
[HORIZONTAL BAR]	2' X 4' LIGHT
[VERTICAL BAR]	2' X 2' LIGHT
[GRID]	2' X 4' LIGHT
[GRID]	2' X 2' LIGHT
[HORIZONTAL BAR]	4' DIFFUSER
[VERTICAL BAR]	2' DIFFUSER
[HORIZONTAL BAR]	4' FLORESCENT
[CIRCLE]	PENDANT LIGHT
[CIRCLE]	6" RECESSED
[CIRCLE]	8" RECESSED
[SQUARE]	12" X 12" CEILING GRILL
[HATCH]	REMOVE AND SAVE 2' X 4' LIGHT
[HATCH]	REMOVE AND SAVE 2' X 2' LIGHT

1 DEMO REFLECTED CEILING PLAN
1/8" = 1'-0"