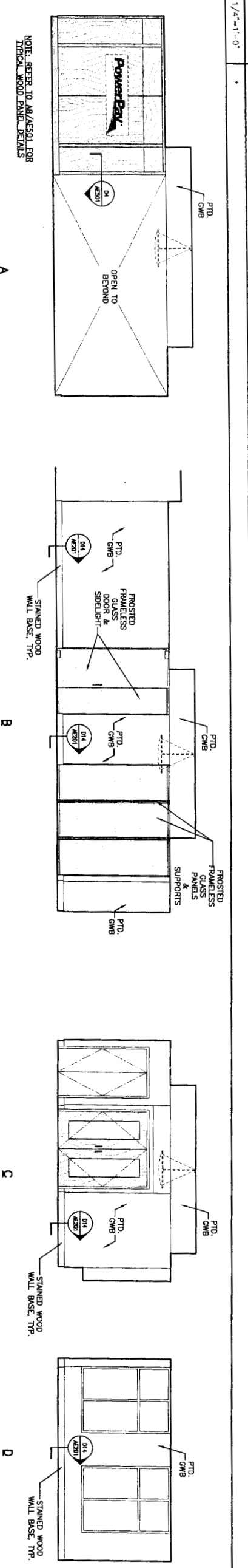
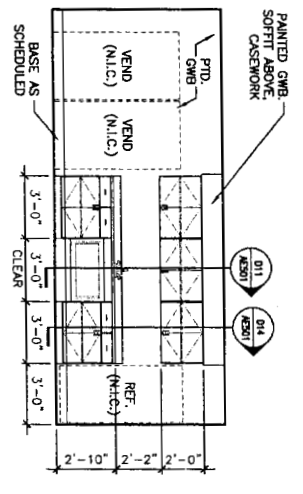


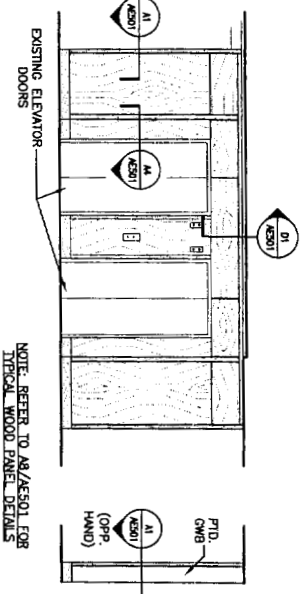
L1 CONFERENCE ROOM #313



H1 WAITING AREA #314



D1 KITCHEN #324

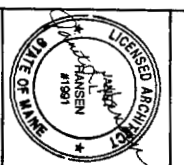


D5 ELEVATOR LOBBY #312

A1

REV	DESCRIPTION	DATE

PROJECT TITLE: 280 FORE STREET 3rd FLOOR TENANT FIT-UP PORTLAND, MAINE  
 CURRENT ISSUE STATUS: ISSUED FOR PERMIT 9-28-06  
 SCALE: AS NOTED  
 PROJECT MANAGER: J.M.  
 A/E OR RECORD: J.M.  
 CAD FILE: AE201-051723  
 PROJECT NO: 051723  
 SHEET TITLE: INTERIOR ELEVATIONS  
 SHEET No. AE201



ARCHITECTURE ENGINEERING PLANNING  
 SMRT  
 144 Fore Street/P.O. Box 618  
 Portland, Maine 04104  
 tel. (207) 772-8646  
 fax. (207) 772-1070





ROOM FINISH SCHEDULE

ROOM NUMBER	ROOM NAME	FLOOR	PATTERN	MATERIAL	FINISH	WALLS				CEILING	ROOM NUMBER	REMARKS
						NORTH	SOUTH	EAST	WEST			
312	ELEVATOR LOBBY	CPT-1	AF101	WD	WM	GWB	WVC	GWB	WVC	GWB	WVC	GWB AT 9'-0" / ACT @ 9'-2"
313	CONFERENCE ROOM	CPT-2	AF101	WD	WM	GWB	P-2	GWB	P-2	GWB	P-2	GWB AT 9'-0" / ACT @ 9'-2"
314	WAITING AREA	CPT-3	AF101	WD	WM	GWB	P-2	GWB	P-2	GWB	P-2	GWB AT 9'-0" / ACT @ 9'-2"
315	OPEN OFFICE	CPT-3	AF101	WD	WM	GWB	P-2	GWB	P-2	GWB	P-2	GWB AT 9'-0" / ACT @ 9'-2"
316	OFFICE	CPT-2	RES-1	RES-1	GWB	P-2	GWB	P-2	GWB	P-2	GWB	GWB AT 9'-0" / ACT @ 9'-2"
317	OFFICE	CPT-2	RES-1	RES-1	GWB	P-2	GWB	P-2	GWB	P-2	GWB	GWB AT 9'-0" / ACT @ 9'-2"
318	OFFICE	CPT-2	RES-1	RES-1	GWB	P-2	GWB	P-2	GWB	P-2	GWB	GWB AT 9'-0" / ACT @ 9'-2"
319	OFFICE	CPT-2	RES-1	RES-1	GWB	P-2	GWB	P-2	GWB	P-2	GWB	GWB AT 9'-0" / ACT @ 9'-2"
320	OFFICE	CPT-2	RES-1	RES-1	GWB	P-2	GWB	P-2	GWB	P-2	GWB	GWB AT 9'-0" / ACT @ 9'-2"
321	OFFICE	CPT-2	RES-1	RES-1	GWB	P-2	GWB	P-2	GWB	P-2	GWB	GWB AT 9'-0" / ACT @ 9'-2"
322	OFFICE	CPT-2	RES-1	RES-1	GWB	P-2	GWB	P-2	GWB	P-2	GWB	GWB AT 9'-0" / ACT @ 9'-2"
323	OFFICE	CPT-2	RES-1	RES-1	GWB	P-2	GWB	P-2	GWB	P-2	GWB	GWB AT 9'-0" / ACT @ 9'-2"
324	BUSINESS OFFICE	CPT-2	RES-1	RES-1	GWB	P-2	GWB	P-2	GWB	P-2	GWB	GWB AT 9'-0" / ACT @ 9'-2"
325	KITCHEN	VCT	RES-1	RES-1	GWB	P-2	GWB	P-2	GWB	P-2	GWB	GWB AT 9'-0" / ACT @ 9'-2"
326	IT	VCT	RES-1	RES-1	GWB	P-2	GWB	P-2	GWB	P-2	GWB	GWB AT 9'-0" / ACT @ 9'-2"
327	OPEN OFFICE	CPT-3	RES-1	RES-1	GWB	P-2	GWB	P-2	GWB	P-2	GWB	GWB AT 9'-0" / ACT @ 9'-2"
328	ENCLOSURE ROOM	CPT-2	RES-1	RES-1	GWB	P-2	GWB	P-2	GWB	P-2	GWB	GWB AT 9'-0" / ACT @ 9'-2"
329	CORRIDOR	CPT-3	RES-1	RES-1	GWB	P-2	GWB	P-2	GWB	P-2	GWB	GWB AT 9'-0" / ACT @ 9'-2"
330	OFFICES	CPT-3	RES-1	RES-1	GWB	P-2	GWB	P-2	GWB	P-2	GWB	GWB AT 9'-0" / ACT @ 9'-2"
331	CORRIDOR	CPT-1	WD	WM	GWB	P-2	GWB	P-2	GWB	P-2	GWB	GWB AT 9'-0" / ACT @ 9'-2"

J5 THIRD FLOOR ROOM FINISH SCHEDULE

DOOR SCHEDULE

DOOR NUMBER	SIZE	MATERIAL	ELEVATION	GLAZING	MATERIAL	ELEVATION	FRAME	JAMB	SILL	HMS	FIRE RATING (MIN)	DOOR NUMBER	REMARKS
312	3'-0"x7'-0"x1 3/4"	WD	G	TEMP.	HM	4	3/FT/AE601/H3/F3/AE601			?		312	
313	(2) 3'-0"x7'-0"x1 3/4"	WD	FG	TEMP.	HM	3	L1/AE601/H1/AE601			?		313	
314A	3'-2"x8'-10"x3/4"	GL	A	TEMP.	HM	3	D1/AE601			?		314A	
314B	(2) 1'-10"x7'-0"x1 3/4"	WD	F		HM	2	L3/AE601/H3/AE601		D3/AE601	?		314B	
315	3'-0"x7'-0"x1 3/4"	WD	NL		HM	2	L3/AE601/H3/AE601			?		315	
316	3'-0"x7'-0"x1 3/4"	WD	F		HM	2	3/FT/AE601/H3/F3/AE601			?		316	
317	3'-0"x7'-0"x1 3/4"	WD	F		HM	2	3/FT/AE601/H3/F3/AE601			?		317	
318	3'-0"x7'-0"x1 3/4"	WD	F		HM	2	3/FT/AE601/H3/F3/AE601			?		318	
319	3'-0"x7'-0"x1 3/4"	WD	F		HM	2	3/FT/AE601/H3/F3/AE601			?		319	
320	3'-0"x7'-0"x1 3/4"	WD	F		HM	2	3/FT/AE601/H3/F3/AE601			?		320	
321	3'-0"x7'-0"x1 3/4"	WD	F		HM	2	3/FT/AE601/H3/F3/AE601			?		321	
322	3'-0"x7'-0"x1 3/4"	WD	F		HM	2	3/FT/AE601/H3/F3/AE601			?		322	
323	3'-0"x7'-0"x1 3/4"	WD	F		HM	2	3/FT/AE601/H3/F3/AE601			?		323	
324	3'-0"x7'-0"x1 3/4"	WD	F		HM	2	3/FT/AE601/H3/F3/AE601			?		324	
325A	3'-0"x7'-0"x1 3/4"	WD	F		HM	1	L3/AE601/H3/AE601			?		325A	
325B	3'-0"x7'-0"x1 3/4"	WD	F		HM	1	L3/AE601/H3/AE601			?		325B	
326	3'-0"x7'-0"x1 3/4"	WD	F		HM	1	L3/AE601/H3/AE601			?		326	
327	3'-0"x7'-0"x1 3/4"	WD	F		HM	1	L3/AE601/H3/AE601			?		327	
328	3'-0"x7'-0"x1 3/4"	WD	F		HM	1	L3/AE601/H3/AE601			?		328	

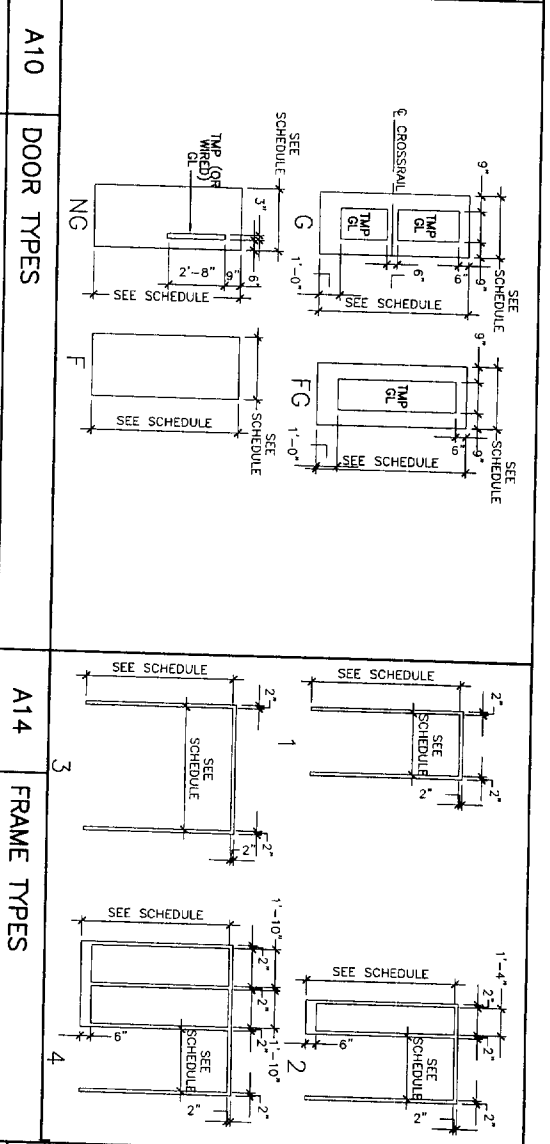
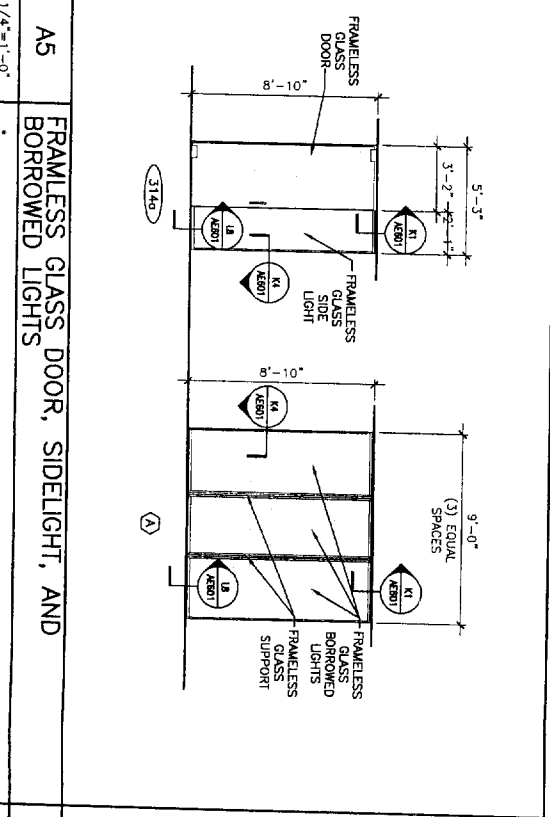
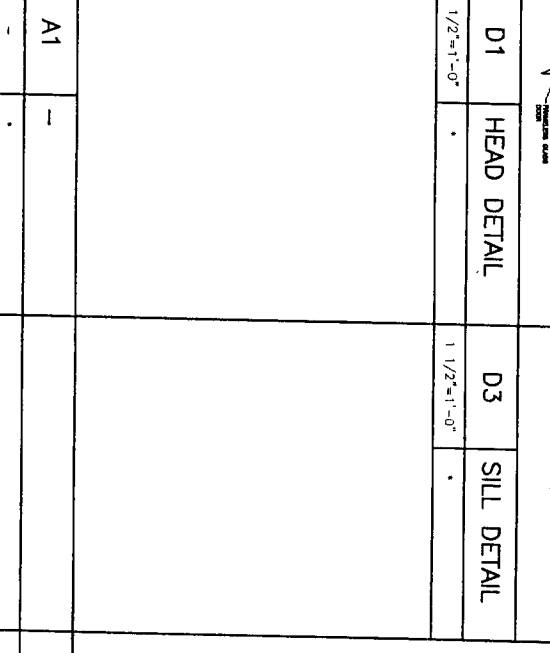
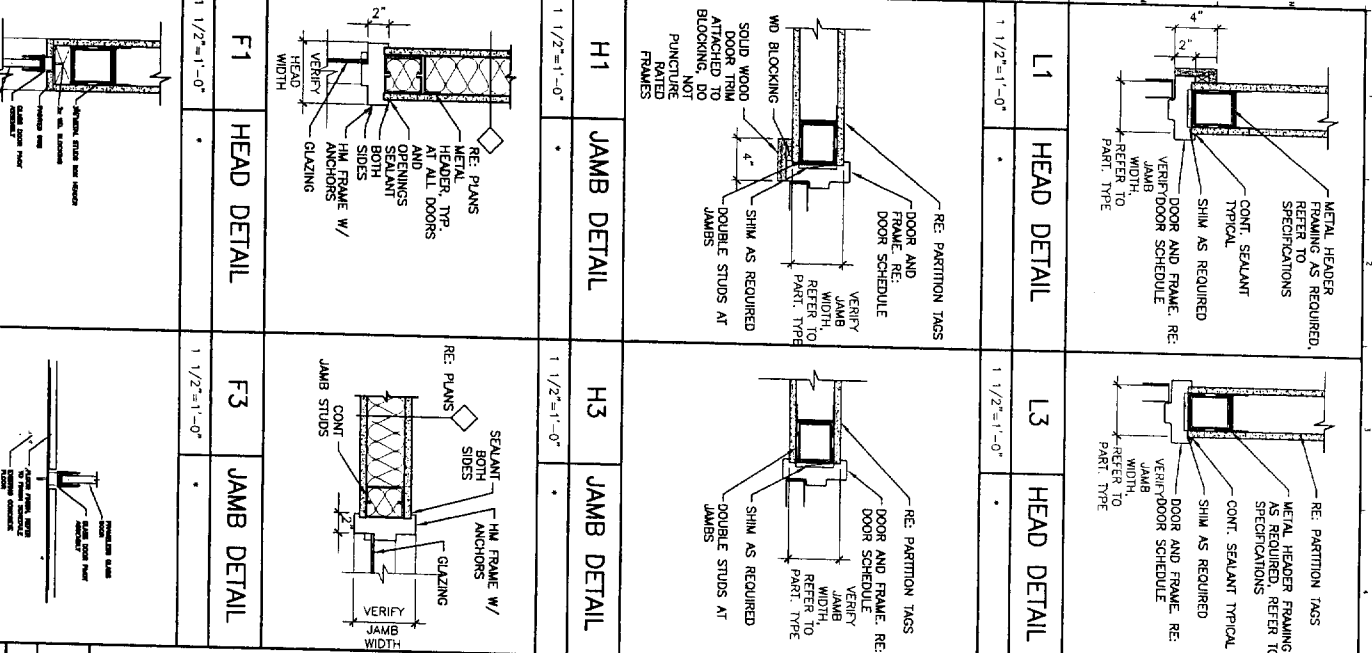
E5 THIRD FLOOR DOOR SCHEDULE

DOOR ABBREVIATIONS

A/L/ALUM ALUMINUM  
 F FLUSH  
 FG FULL GLASS  
 HM HALF GLASS  
 HNS HOLLOW METAL  
 INS INSULATED  
 NAR NARROW GLASS  
 NS SOLID CORE WOOD  
 SRT STEEL  
 TGL TYPED GLASS  
 VP VISION PANEL

DOOR NOTES

1. ALL SWINGING DOORS TO BE 1-3/4" THICK (UNO).
2. ALL DOORS SHALL BE 3/4" UNDERCUT (TYPICAL) EXCEPT WHEN SPECIALLY NOTED OTHERWISE.
3. ALL DOORS WITH BOTTOM FRAMES OR SILL THRESHOLDS SHALL HAVE MANUFACTURERS RECOMMENDED STANDARD UNDERCUT.
4. GLAZING NOTED ON DOOR SCHEDULE IS FOR THE DOOR AND SIDELIGHTS IN THE FRAME (TYPICAL).



PROJECT TITLE: 280 FORE STREET 3rd FLOOR TENANT FIT-UP  
 PORTLAND, MAINE

POWERPAY POWER RATED CONTRACTORS

ISSUED FOR PERMIT 9-28-06

PROJECT NORTH

REGISTERED ARCHITECT JAMES HANSEN 1981 STATE OF MAINE

ARCHITECTURE ENGINEERING PLANNING SMRT  
 144 Fore Street, P.O. Box 618  
 Portland, Maine 04104  
 tel. (207) 772-3846  
 fax. (207) 772-1070

ROOM FINISH/DOOR SCHEDULES, DOOR & FRAME TYPES & DETAILS  
 SHEET NO. AE601