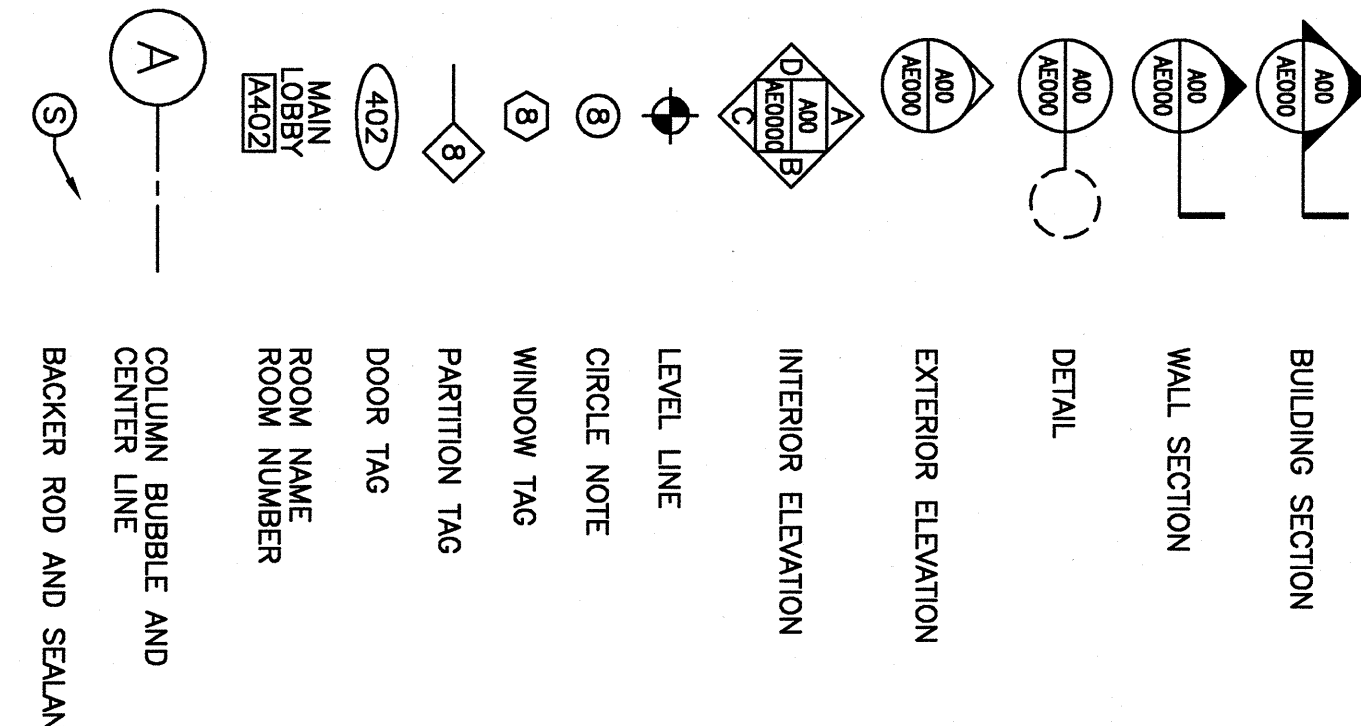


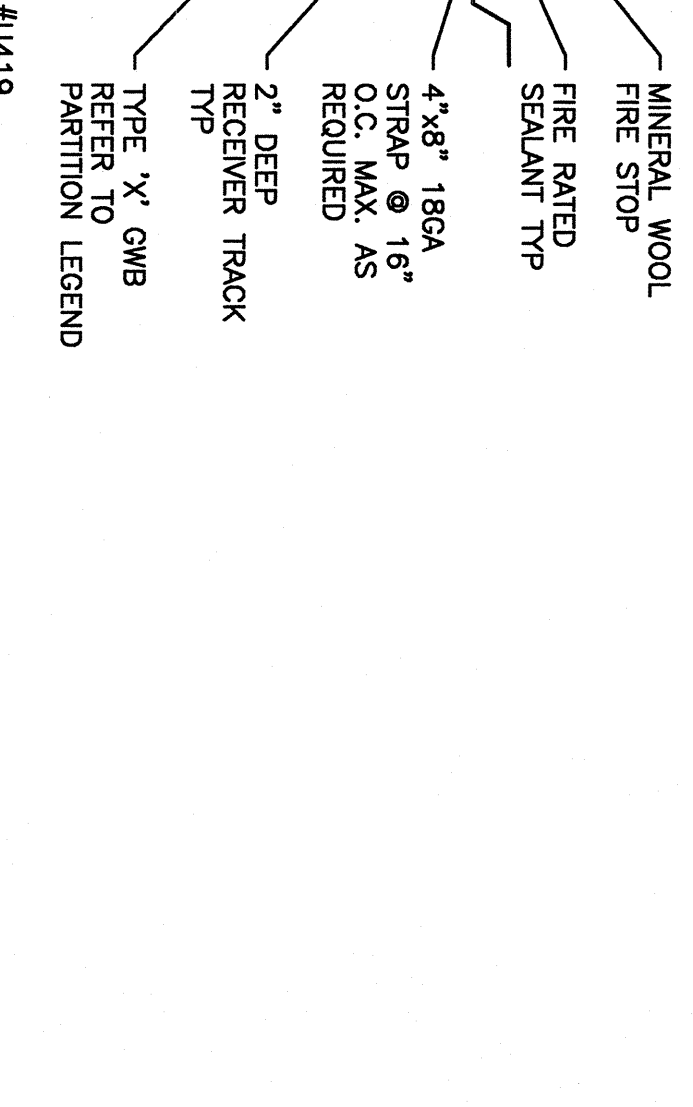
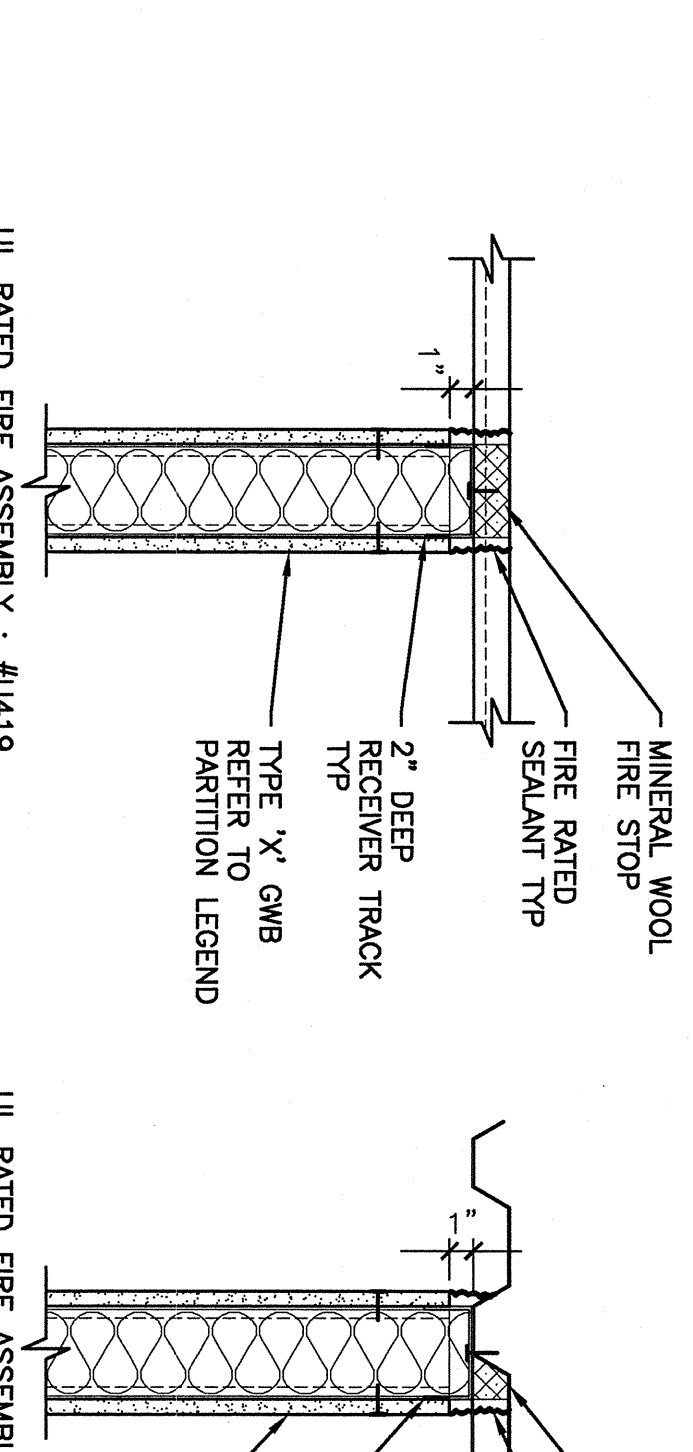
ABBREVIATIONS

AB	ANCHOR BOLT	LA	ANGLE LENGTH
AC	A/C AIR CONDITIONING CONDENSER UNIT	LB	LEFT
ACCU	ACCU	LC	LEFT LINOLEUM
AD	ADJUSTABLE PLASTER	LD	LONG LEG HORIZONTAL
AET	ABOVE FINISHED FLOOR	LE	LONG LEG VERTICAL
AG	AGGREGATE	LF	LIGHTING PANEL: LIQUIFIED PROPANE
AL	ALTERNATE	MA	MANUAL
AP	ACCESS PANEL	MB	MARKER BOARD OVERLAY
AR	ARCHITECTURAL	MD	MEDIUM DENSITY
ARX	ARCHITECTURAL	ME	MECHANICAL
BCX	BOTTOM CHORD EXTENSION	MF	MECHANICAL MANUFACTURER
BD	BOARD	MI	MISCELLANEOUS
BLD	BUILDING	MO	MOSTURE-RESISTANT MAKE-UP AIR
BLP	BORROWED LIGHT PANEL	MR	MOSING
BO	BOTTOM OF FOOTING	N	NEW
BOF	BOTTOM OF FOOTING	NB	NEW BATH
BOF	BOTTOM OF FOOTING	NDM	NEW DRAIN MAINHOLE
BOF	BOTTOM OF FOOTING	NF	NEW FORCE MAIN
BOF	BOTTOM OF FOOTING	NI	NOT IN CONTRACT
BOF	BOTTOM OF FOOTING	NS	NEW STOD DRAIN LINE
BOF	BOTTOM OF FOOTING	NSS	NEW SANITARY SEWER LINE
BOF	BOTTOM OF FOOTING	NW	NEW WATER LINE
BOF	BOTTOM OF FOOTING	OC	ON CENTER
BOF	BOTTOM OF FOOTING	OH	OVERHEAD
BOF	BOTTOM OF FOOTING	PA	PUBLIC ADDRESS
BOF	BOTTOM OF FOOTING	PFU	POOL DEHUMIDIFICATION UNIT
BOF	BOTTOM OF FOOTING	PL	PLATE, PROPERTY LINE
BOF	BOTTOM OF FOOTING	PLM	PLASTIC LAMINATE
BOF	BOTTOM OF FOOTING	PLF	POUNDS PER LINEAR FOOT
BOF	BOTTOM OF FOOTING	PSI	POUNDS PER SQUARE INCH
BOF	BOTTOM OF FOOTING	PT	PRESSURE-TREATED
BOF	BOTTOM OF FOOTING	PVC	POLYVINYL CHLORIDE
BOF	BOTTOM OF FOOTING	PMI	PAVEMENT
BOF	BOTTOM OF FOOTING	R	RISER, RADIUS
BOF	BOTTOM OF FOOTING	RD	ROOF DRAIN
BOF	BOTTOM OF FOOTING	RE	REINFORCED
BOF	BOTTOM OF FOOTING	RT	RIGHT
BOF	BOTTOM OF FOOTING	RO	ROUGH OPENING
BOF	BOTTOM OF FOOTING	RU	ROUGH UNIT (HAC)
BOF	BOTTOM OF FOOTING	SACT	SUSPENDED ACOUSTIC
BOF	BOTTOM OF FOOTING	SE	SOLID CORE
BOF	BOTTOM OF FOOTING	SE	SHEET
BOF	BOTTOM OF FOOTING	SH	SHED
BOF	BOTTOM OF FOOTING	SK	SHEAR KEY
BOF	BOTTOM OF FOOTING	SN	SHARKEY MARKIN (DISPENSER)
BOF	BOTTOM OF FOOTING	SS	STAINLESS STEEL
BOF	BOTTOM OF FOOTING	STA	STATION
BOF	BOTTOM OF FOOTING	STL	STRUCTURAL
BOF	BOTTOM OF FOOTING	T	TREAD
BOF	BOTTOM OF FOOTING	T&B	TOP AND BOTTOM
BOF	BOTTOM OF FOOTING	TM	TEMPORARY BENCHMARK
BOF	BOTTOM OF FOOTING	TOS	TOP OF STEEL: TOP OF SLAB
BOF	BOTTOM OF FOOTING	TOW	TOP OF WALL
BOF	BOTTOM OF FOOTING	TR	TOILET PAPER (DISPENSER): TEST PIT
BOF	BOTTOM OF FOOTING	TR	TYPICAL
BOF	BOTTOM OF FOOTING	UH	UNIT HEATER
BOF	BOTTOM OF FOOTING	UNO	UNLESS NOTED OTHERWISE
BOF	BOTTOM OF FOOTING	V	VENT PIPE, VERTICAL
BOF	BOTTOM OF FOOTING	VBT	VAPOR BARRIER
BOF	BOTTOM OF FOOTING	VCR	VINYL COMPOSITION TILE
BOF	BOTTOM OF FOOTING	VER	VERTICAL
BOF	BOTTOM OF FOOTING	VSI	VENT THROUGH THE ROOF
BOF	BOTTOM OF FOOTING	W	WATER CLOSET
BOF	BOTTOM OF FOOTING	WF	WIDE FLANGE
BOF	BOTTOM OF FOOTING	WH	WATER HEATER
BOF	BOTTOM OF FOOTING	WO	WITHOUT
BOF	BOTTOM OF FOOTING	WP	WORKING POINT
BOF	BOTTOM OF FOOTING	WS	WELDED WIRE FABRIC
BOF	BOTTOM OF FOOTING	WVF	WELDED WIRE FABRIC

SYMBOL LEGEND



GRID NO.	TITLE
SCALE	REFERENCE SHEET



DRAWING LIST

GENERAL	COVER SHEET
ARCHITECTURAL	FLOOR PLAN
AE101	REFLECTED CEILING PLAN
AE102	INTERIOR ELEVATIONS
AE201	MILLWORK DETAILS
AE301	ROOM FINISH/DOOR SCHEDULES, DOOR/FRAME TYPES, & DETAILS
MECHANICAL	
PLUMBING	
ELECTRICAL	

OLYMPIA EQUITY INVESTORS

280 FORE STREET
SUITE #202
PORTLAND, MAINE 04101

PowerPay
PORTLAND, MAINE

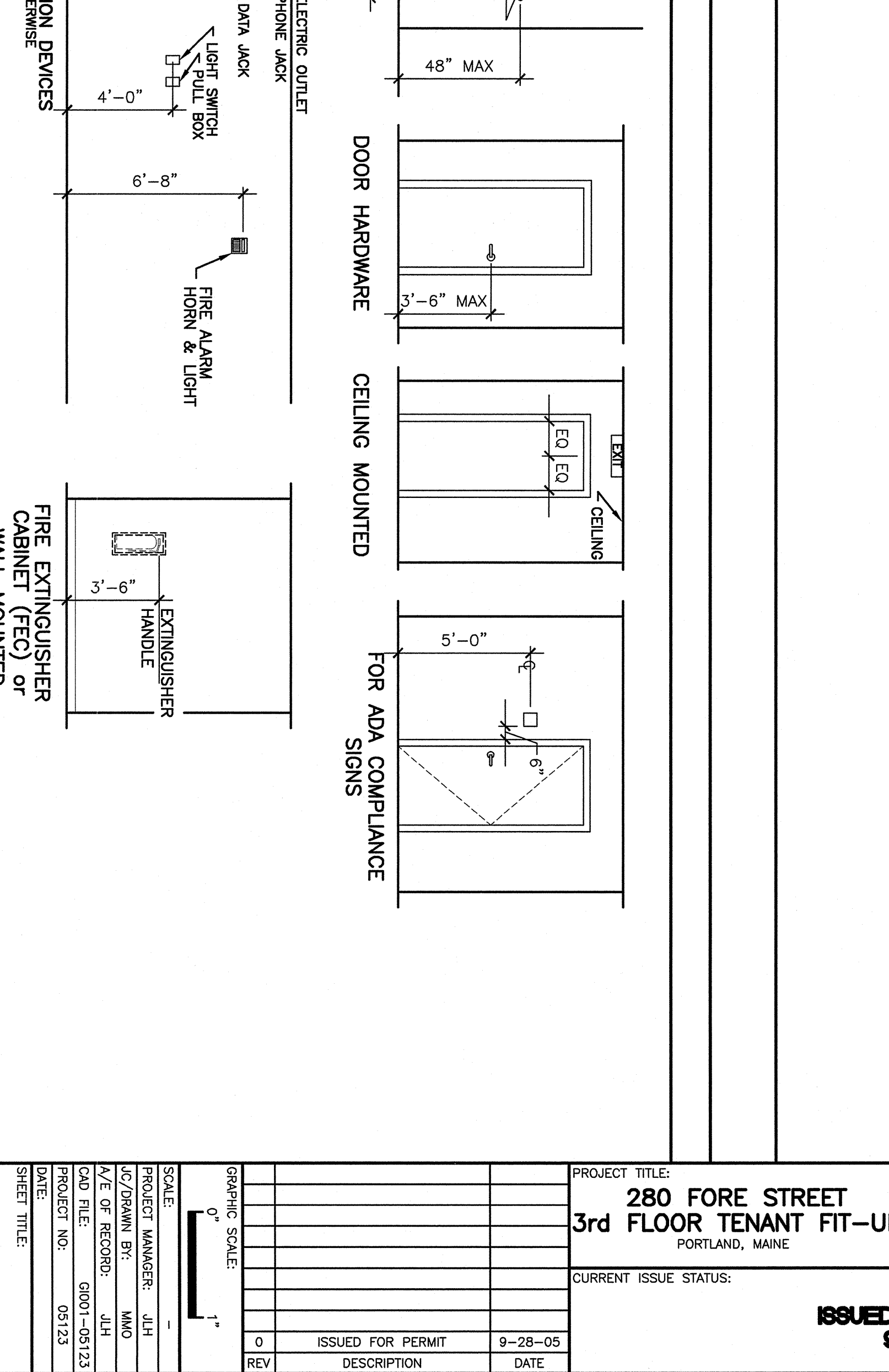
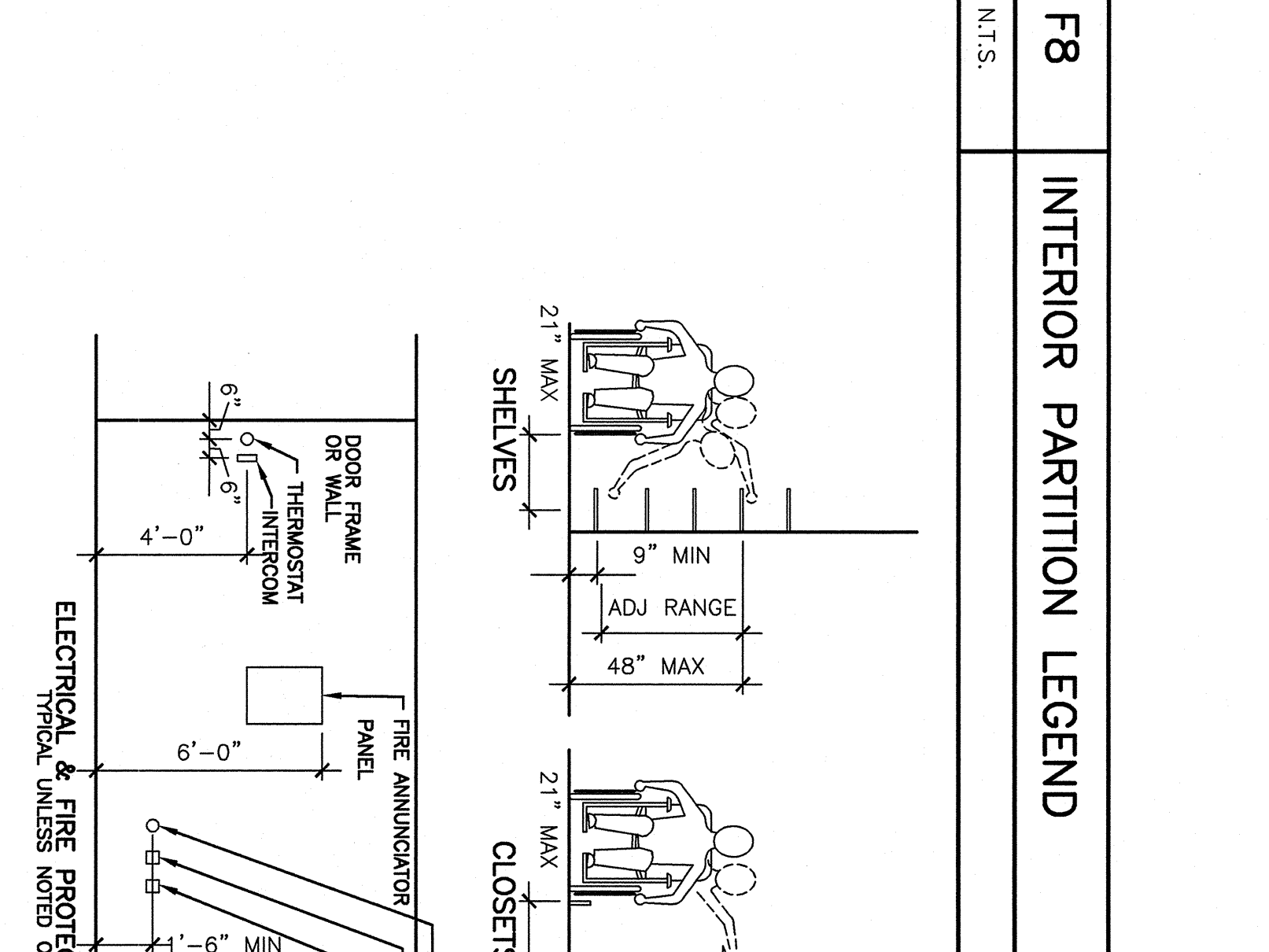
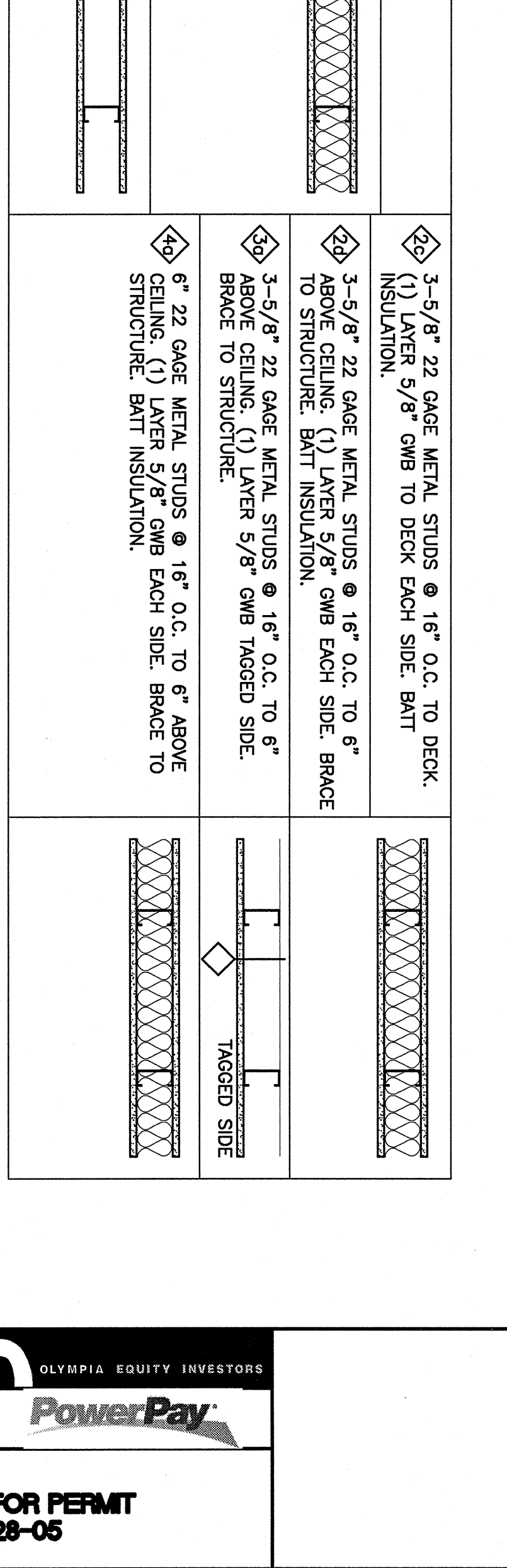
3rd FLOOR TENANT FIT-UP

ISSUED FOR PERMIT
SEPTEMBER 27, 2005

SMRT
ARCHITECTURE ENGINEERING PLANNING
SMRT
144 Fore Street/P.O. Box 618
Portland, Maine 04104
tel. (207) 772-3846
fax. (207) 772-1070

F8 INTERIOR PARTITION LEGEND

	1 HOUR RATED, UL DESIGN: U419 PARTITION MAINAINS FINISHES INCLUDING ANY FIRE RATINGS THE EXISTING PARTITION MAINTAINS		20 GAGE 3-5/8\"/>		3-5/8\"/>
	3-5/8\"/>		6\"/>		6\"/>



PROJECT TITLE:	280 FORE STREET 3rd FLOOR TENANT FIT-UP PORTLAND, MAINE
CURRENT ISSUE STATUS:	ISSUED FOR PERMIT 9-28-05
DATE	9-28-05
DESCRIPTION	
REV	
SCALE:	GRAPHIC SCALE
SCALE:	1" = 8'-0"
PROJECT MANAGER:	JLH
DATE OF RECORD:	JLH
DATE OF FILE:	0903-09123
PROJECT NO.:	09123
SHEET TITLE:	COVER SHEET
SHEET NO.:	G1001