

ROOM FINISH SCHEDULE

ROOM NUMBER	ROOM NAME	FLOOR	PATTERN	MATERIAL	FINISH	WALLS				CEILING	HEIGHT	REMARKS
						NORTH	SOUTH	EAST	WEST			
312	ELEVATOR LOBBY		CPT-1	WD	WVC	GWB	GWB	GWB	GWB	ACT/GWB	9'-2"	*GWB AT 9'-0"/ACT @ 9'-2"
313	CONFERENCE ROOM		CPT-2	WD	WVC	GWB	GWB	GWB	GWB	ACT/GWB	9'-2"	*GWB AT 9'-0"/ACT @ 9'-2"
314	WAITING AREA		CPT-3	WD	WVC	GWB	GWB	GWB	GWB	WD/GWB	9'-2"	*GWB AT 9'-0"/WD @ 9'-2"
315	OFFICE		CPT-3	RES-1	WVC	GWB	GWB	GWB	GWB	ACT-1	9'-6"	
316	OFFICE		CPT-2	RES-1	WVC	GWB	GWB	GWB	GWB	ACT-1	9'-6"	
317	OFFICE		CPT-2	RES-1	WVC	GWB	GWB	GWB	GWB	ACT-1	9'-6"	
318	OFFICE		CPT-2	RES-1	WVC	GWB	GWB	GWB	GWB	ACT-1	9'-6"	
319	OFFICE		CPT-2	RES-1	WVC	GWB	GWB	GWB	GWB	ACT-1	9'-6"	
320	OFFICE		CPT-2	RES-1	WVC	GWB	GWB	GWB	GWB	ACT-1	9'-6"	
321	OFFICE		CPT-2	RES-1	WVC	GWB	GWB	GWB	GWB	ACT-1	9'-6"	
322	OFFICE		CPT-2	RES-1	WVC	GWB	GWB	GWB	GWB	ACT-1	9'-0"	
323	OFFICE		CPT-2	RES-1	WVC	GWB	GWB	GWB	GWB	ACT-1	9'-0"	
324	BUSINESS OFFICE		CPT-2	RES-1	WVC	GWB	GWB	GWB	GWB	ACT-1	8'-6"	
325	KITCHEN		VCI	RES-1	WVC	GWB	GWB	GWB	GWB	ACT-1	8'-6"	
326	IT		VCI	RES-1	WVC	GWB	GWB	GWB	GWB	ACT-1	8'-6"	
327	OPEN OFFICE		CPT-3	RES-1	WVC	GWB	GWB	GWB	GWB	ACT-1	10'-0"	
328	ENCLOSURE ROOM		CPT-2	RES-1	WVC	GWB	GWB	GWB	GWB	ACT-1	9'-6"	
329	CORRIDOR		CPT-1	WD	WVC	GWB	GWB	GWB	GWB	ACT-1	9'-0"	
330	OFFICES		CPT-3	RES-1	WVC	GWB	GWB	GWB	GWB	ACT-1	8'-6"	
331	CORRIDOR		CPT-1	WD	WVC	GWB	GWB	GWB	GWB	ACT-1	9'-0"	

J5 THIRD FLOOR ROOM FINISH SCHEDULE

DOOR NUMBER	SIZE	DOOR MATERIAL	ELEVATION	GLAZING	TEMP.	FRAME			HMS	FIRE RATING (MIN.)	DOOR NUMBER	REMARKS
						HEAD	JAMB	SILL				
312	3'-0"x7'-0"x1 3/4"	WD	G	TEMP.	HM	3/FI/AE601	H3/F3/AE601	1	2	312		
313	3'-0"x7'-0"x1 3/4"	WD	FG	TEMP.	HM	D1/AE601	H1/AE601	1	2	313		
314A	3'-2"x8'-10"x3/4"	GL	A	TEMP.	-	D3/AE601	-	1	?	314A		
314B	(2)1'-10"x7'-0"x1 3/4"	WD	F	-	HM	L3/AE601	H3/AE601	1	2	314B		
315	3'-0"x7'-0"x1 3/4"	WD	NL	-	HM	L3/AE601	H3/AE601	1	2	315		
316	3'-0"x7'-0"x1 3/4"	WD	F	-	HM	3/FI/AE601	H3/F3/AE601	1	2	316		
317	3'-0"x7'-0"x1 3/4"	WD	F	-	HM	3/FI/AE601	H3/F3/AE601	1	2	317		
318	3'-0"x7'-0"x1 3/4"	WD	F	-	HM	3/FI/AE601	H3/F3/AE601	1	2	318		
319	3'-0"x7'-0"x1 3/4"	WD	F	-	HM	3/FI/AE601	H3/F3/AE601	1	2	319		
320	3'-0"x7'-0"x1 3/4"	WD	F	-	HM	3/FI/AE601	H3/F3/AE601	1	2	320		
321	3'-0"x7'-0"x1 3/4"	WD	F	-	HM	3/FI/AE601	H3/F3/AE601	1	2	321		
322	3'-0"x7'-0"x1 3/4"	WD	F	-	HM	3/FI/AE601	H3/F3/AE601	1	2	322		
323	3'-0"x7'-0"x1 3/4"	WD	F	-	HM	3/FI/AE601	H3/F3/AE601	1	2	323		
324	3'-0"x7'-0"x1 3/4"	WD	F	-	HM	3/FI/AE601	H3/F3/AE601	1	2	324		
325A	3'-0"x7'-0"x1 3/4"	WD	F	-	HM	L3/AE601	H3/AE601	1	2	325A		
325B	3'-0"x7'-0"x1 3/4"	WD	F	-	HM	L3/AE601	H3/AE601	1	2	325B		
326	3'-0"x7'-0"x1 3/4"	WD	F	-	HM	L3/AE601	H3/AE601	1	2	326		
327	3'-0"x7'-0"x1 3/4"	WD	F	-	HM	L3/AE601	H3/AE601	1	2	327		
328	3'-0"x7'-0"x1 3/4"	WD	F	-	HM	L3/AE601	H3/AE601	1	2	328		

E5 THIRD FLOOR DOOR SCHEDULE

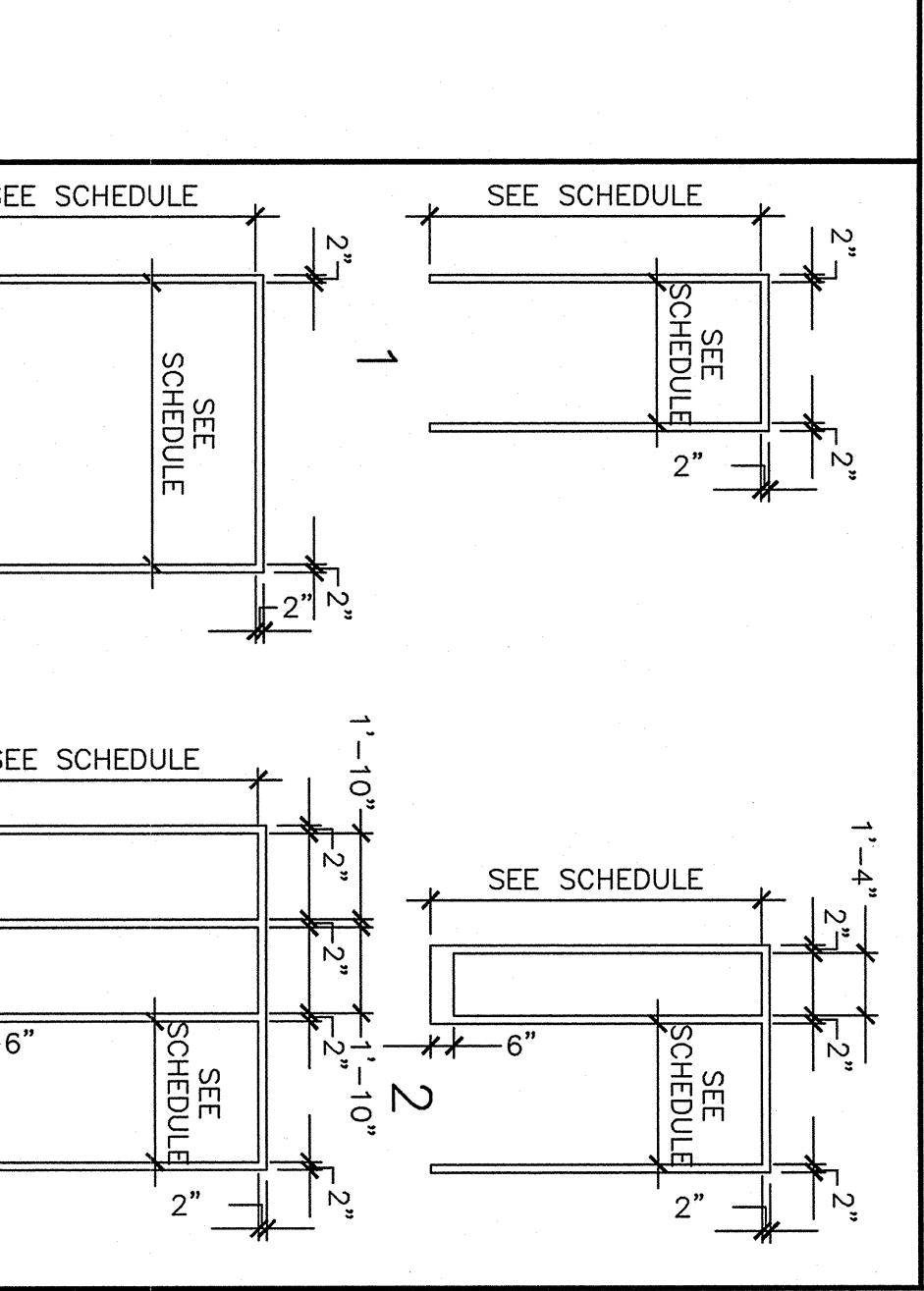
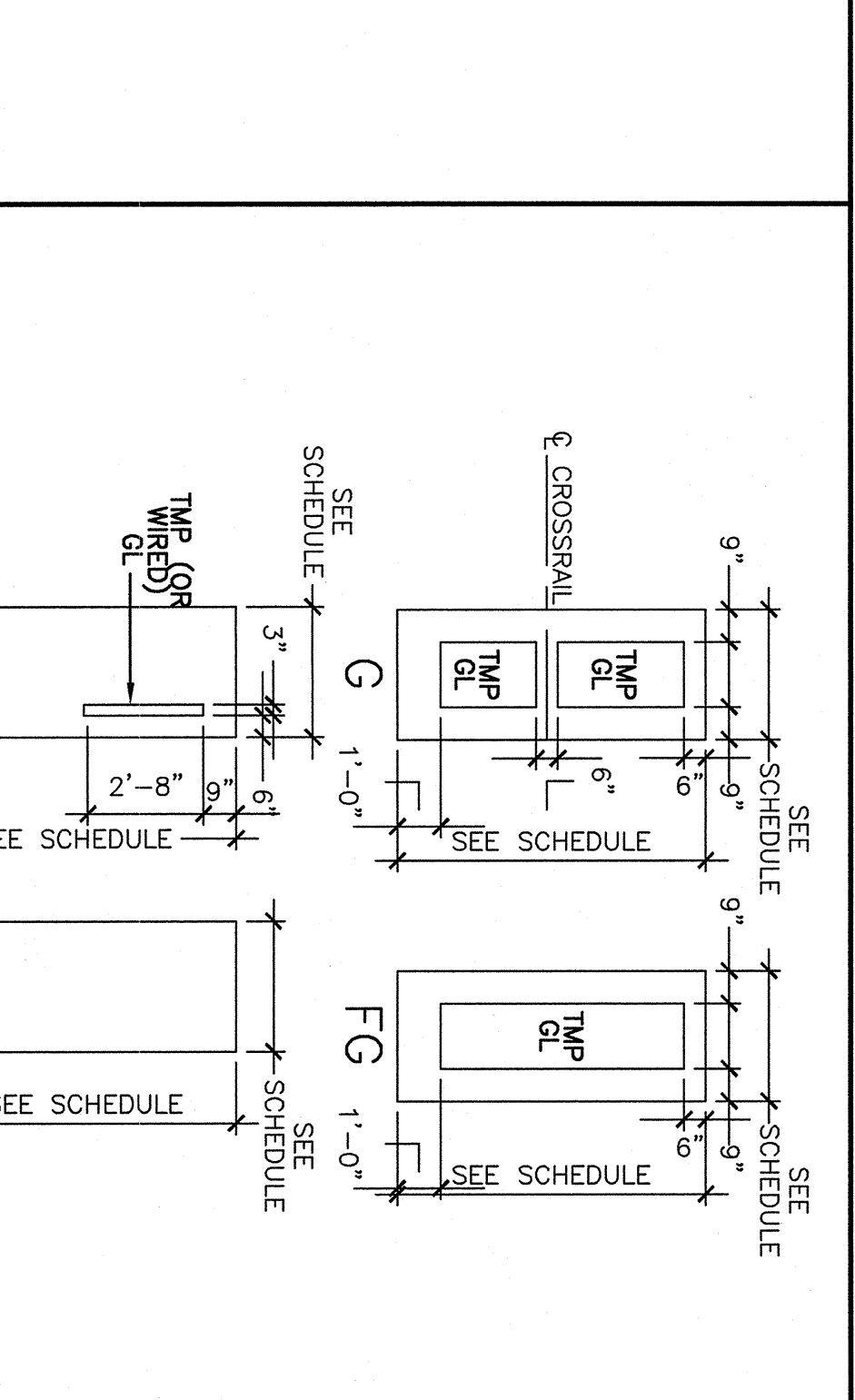
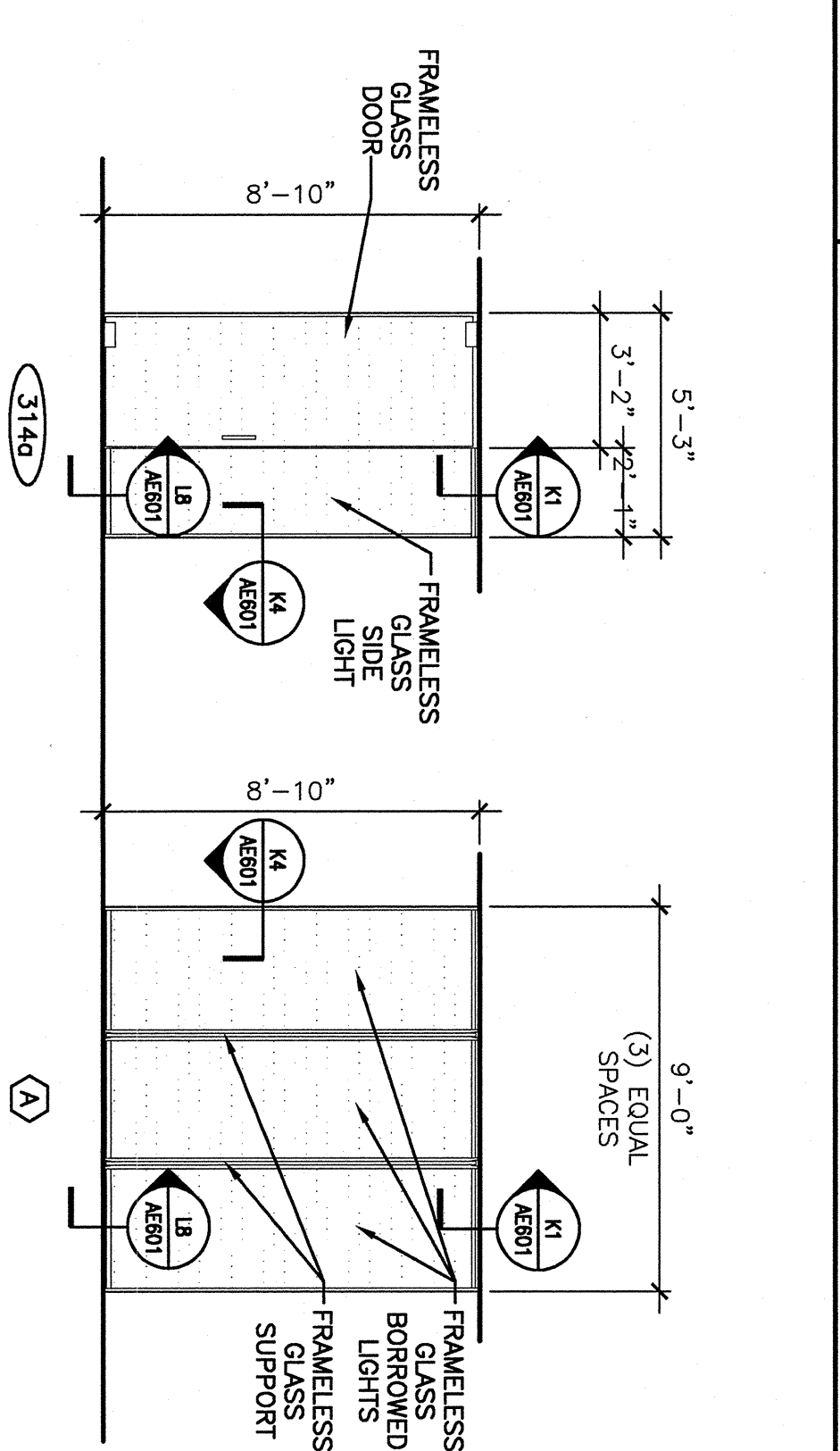
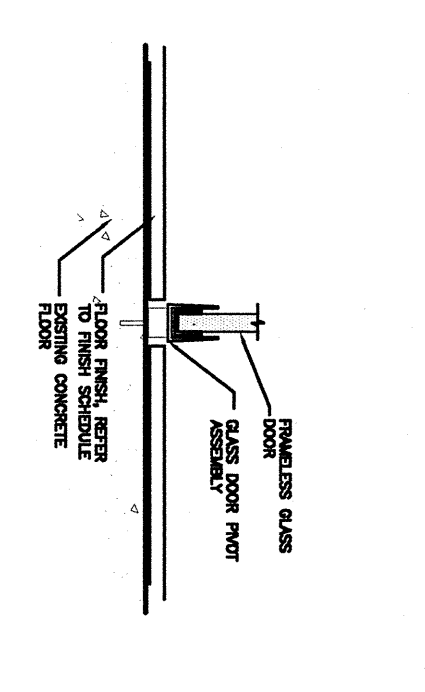
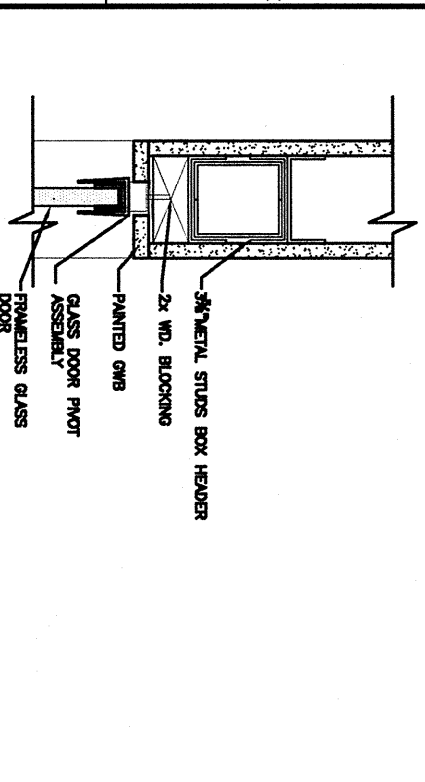
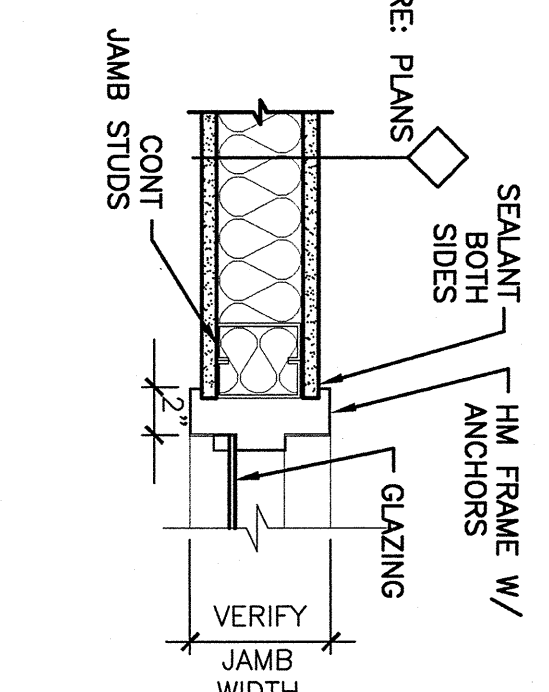
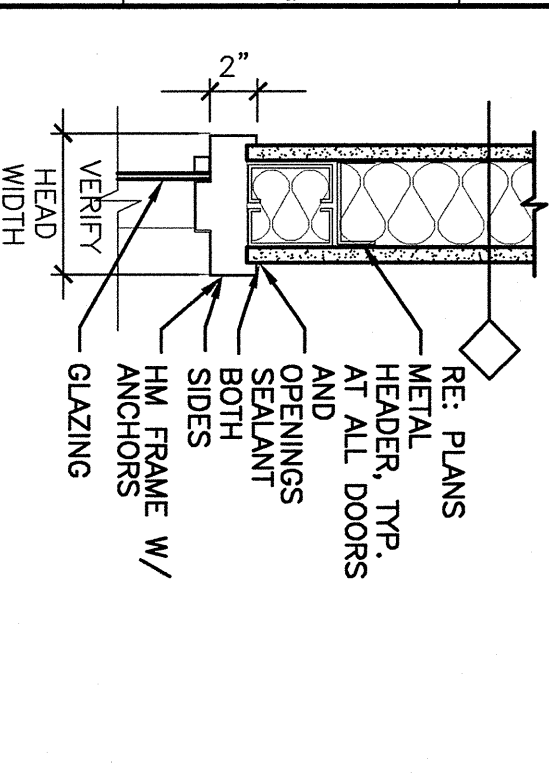
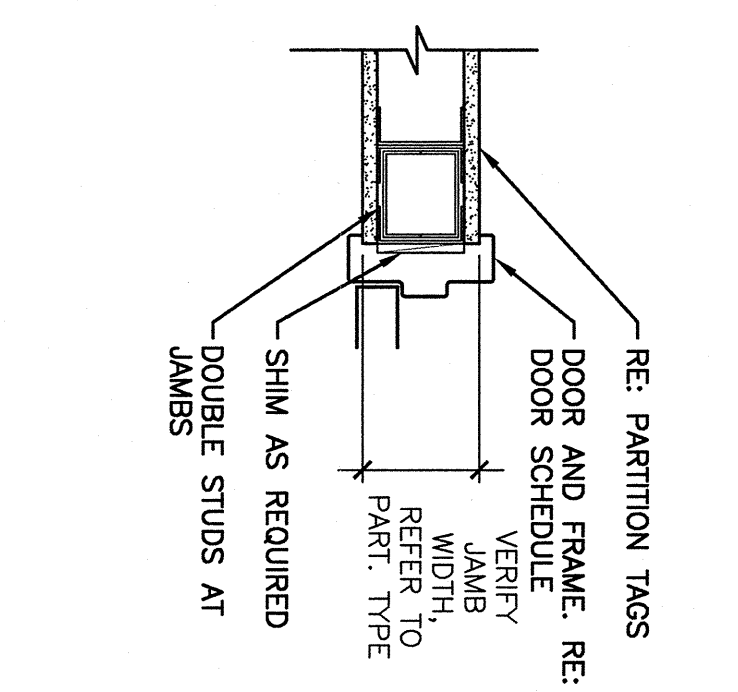
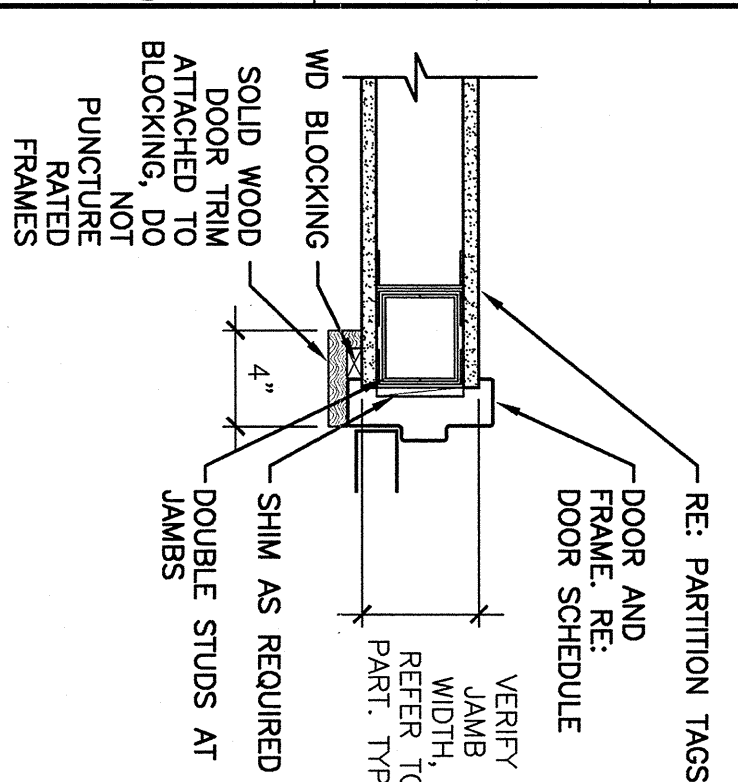
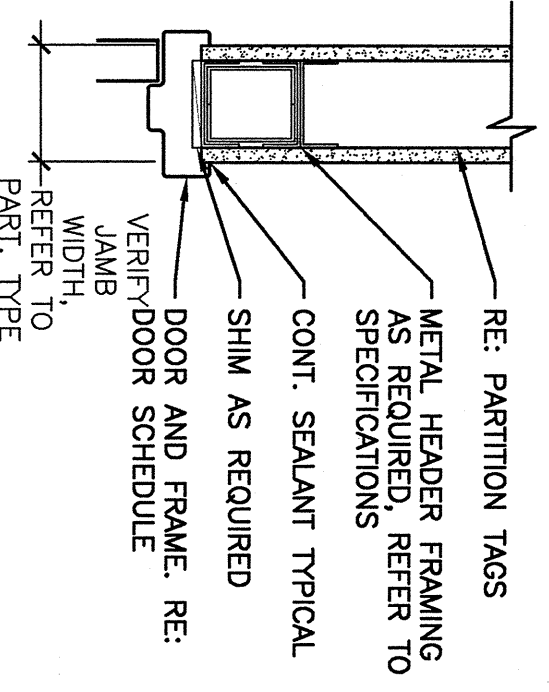
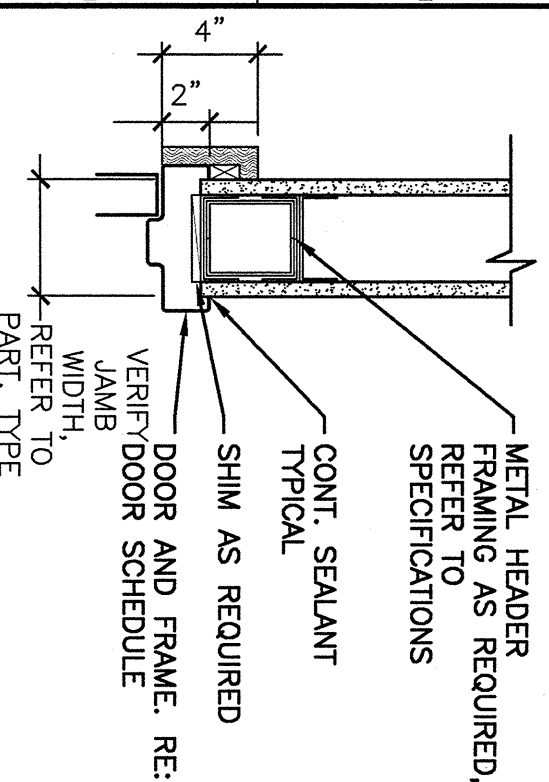
DOOR SCHEDULE

DOOR ABBREVIATIONS

A/ALUM ALUMINUM  
 F FULL GLASS  
 FG HALF GLASS  
 HM HOLLOW METAL  
 INS INSULATED  
 NG NARROW GLASS  
 SCW SOLID CORE WOOD  
 STL STEEL  
 TEMP TEMPERED GLASS  
 WG WIRE GLASS  
 VP VISION PANEL

DOOR NOTES

1. ALL SWINGING DOORS TO BE 1-3/4" THICK (U.N.O.).
2. ALL DOORS SHALL BE 3/4" UNDERCUT (TYPICAL) EXCEPT WHEN THERE IS A BOTTOM FRAME OR SILL THRESHOLD OR SPECIFICALLY NOTED OTHERWISE.
3. ALL DOORS WITH BOTTOM FRAMES OR SILL THRESHOLDS SHALL HAVE MANUFACTURERS RECOMMENDED STANDARD UNDERCUT.
4. GLAZING NOTED ON DOOR SCHEDULE IS FOR THE DOOR AND SIDELIGHTS IN THE FRAME (TYPICAL).



A1	-	*
----	---	---

A5	FRAMBLESS GLASS DOOR, SIDELIGHT, AND BORROWED LIGHTS	*
----	--	---

A10	DOOR TYPES	*
-----	------------	---

A14	FRAME TYPES	*
-----	-------------	---

REV	DESCRIPTION	DATE

PROJECT TITLE: 280 FORE STREET 3rd FLOOR TENANT FIT-UP  
 PROJECT NO: 09173  
 SHEET TITLE: ROOM FINISH/DOOR SCHEDULES, DOOR & FRAME TYPES & DETAILS  
 SHEET NO: AE601

OLYMPIA EQUITY INVESTORS  
**PowerPay**  
 ISSUED FOR PERMIT 9-28-05

PROJECT NORTH

ARCHITECTURE ENGINEERING PLANNING  
 SMART  
 144 Fore Street/P.O. Box 618  
 Portland, Maine 04104  
 tel. (207) 772-3846  
 fax. (207) 772-1070

REGISTERED ARCHITECT  
 JAMES HARRISON  
 1981

**SMRT**