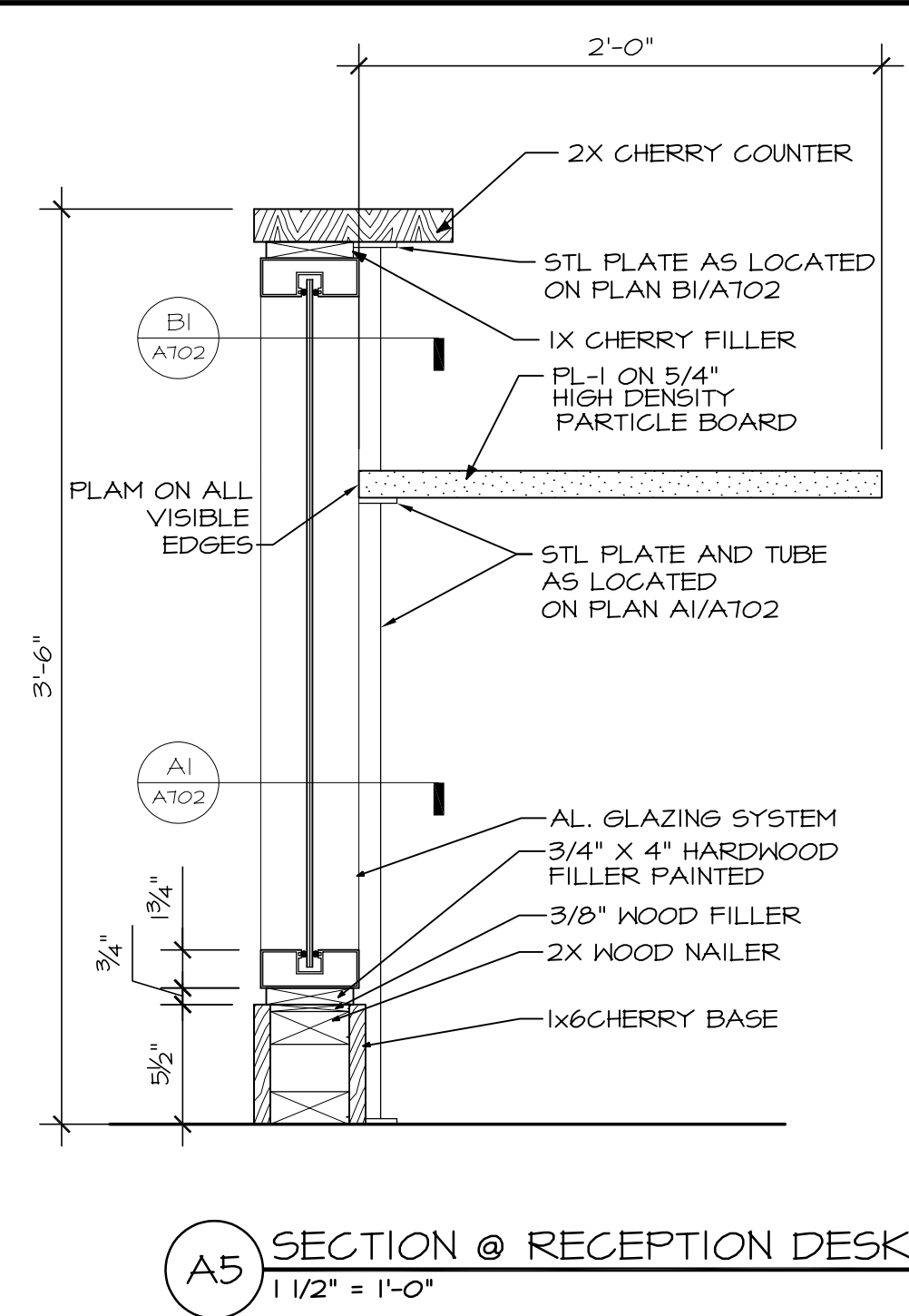
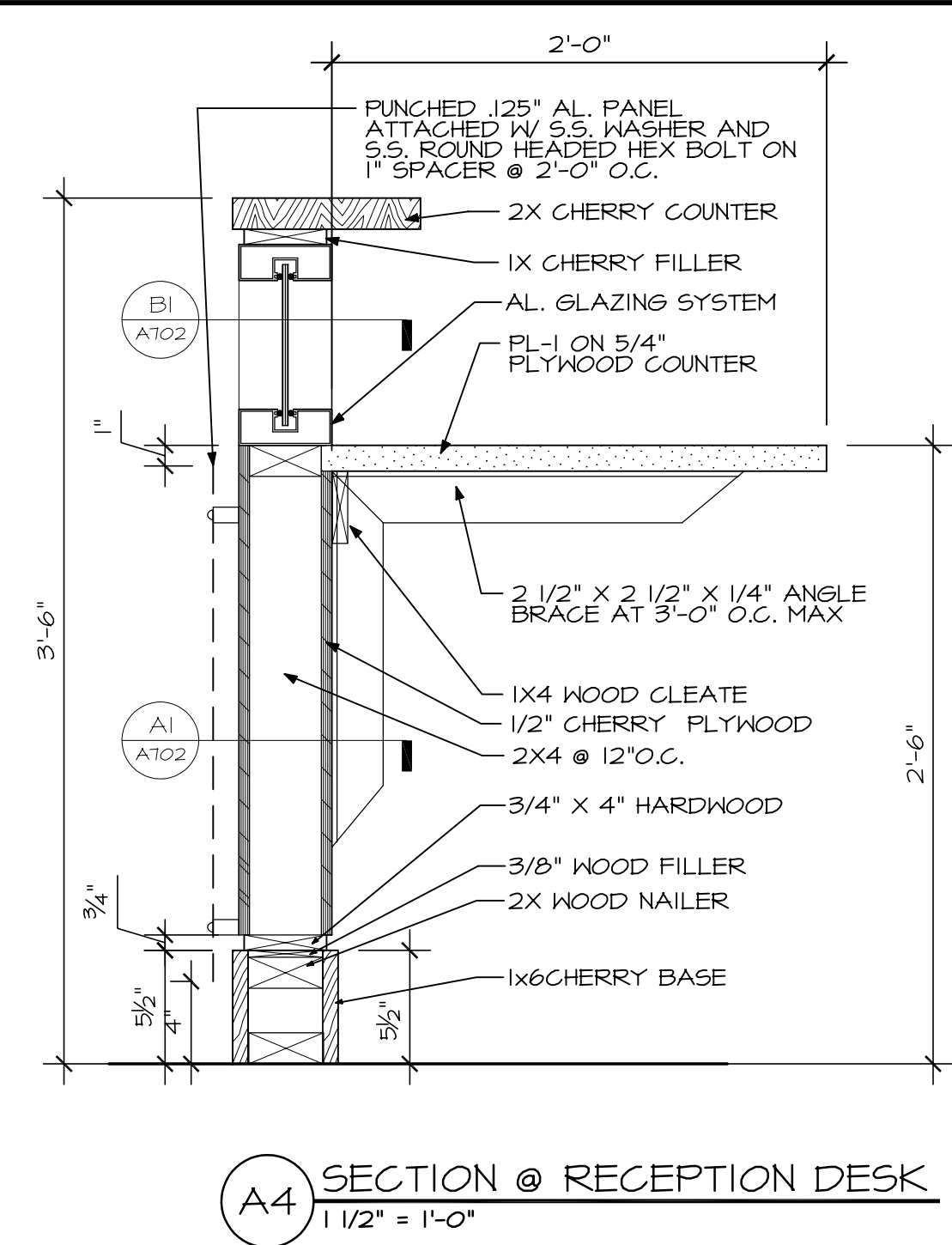


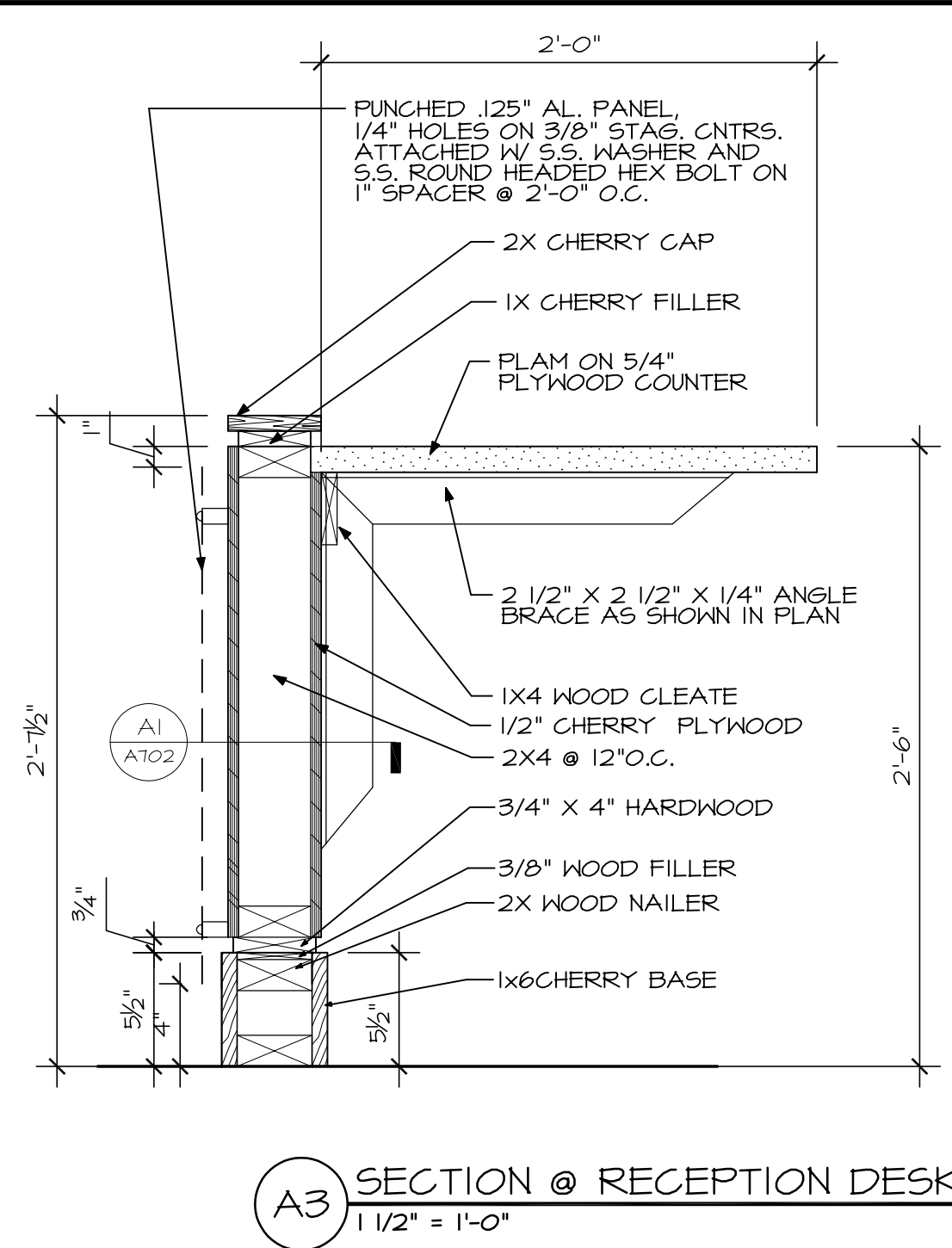
E:\Olympia Equity Investors\280 Fore Street\03312\04701.dwg Jun 07, 2004 - 11:26am
 COPYRIGHT (C) BY CUBELLIS ASSOCIATES, INC. ALL RIGHTS RESERVED. NO PART OF THIS DOCUMENT MAY BE REPRODUCED, STORED IN A RETRIEVAL SYSTEM OR TRANSMITTED IN ANY FORM OR BY ANY MEANS, ELECTRONIC, MECHANICAL, PHOTOCOPYING, RECORDING, OR BY ANY INFORMATION STORAGE AND RETRIEVAL SYSTEM, WITHOUT THE EXPRESS WRITTEN PERMISSION OF CUBELLIS ASSOCIATES, INC. ANY UNAUTHORIZED REPRODUCTION OF THIS DOCUMENT WITHOUT THE WRITTEN PERMISSION OF CUBELLIS ASSOCIATES, INC. IS STRICTLY PROHIBITED AND IS CONSIDERED A VIOLATION OF FEDERAL AND STATE LAWS.



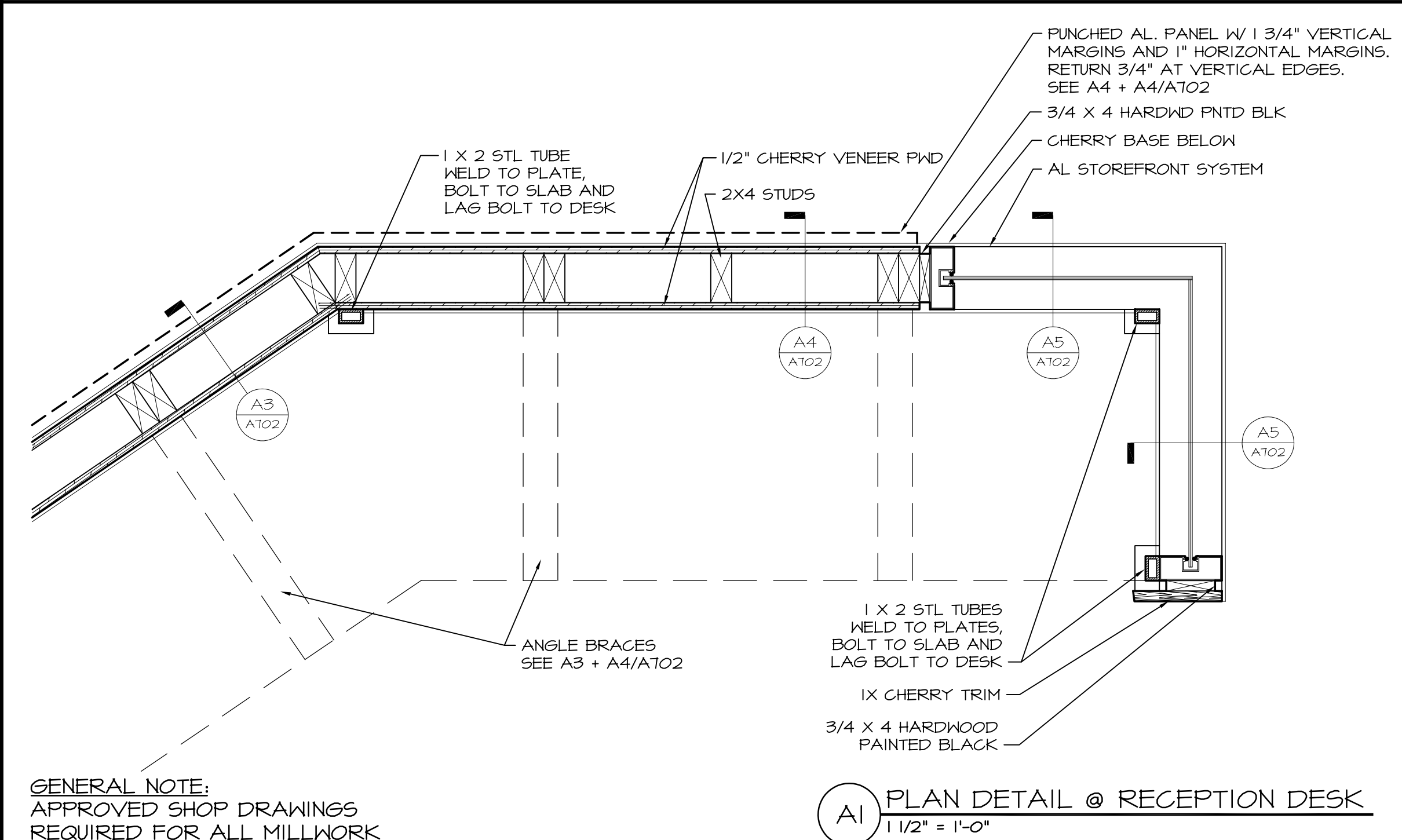
A5 SECTION @ RECEPTION DESK
 1 1/2" = 1'-0"



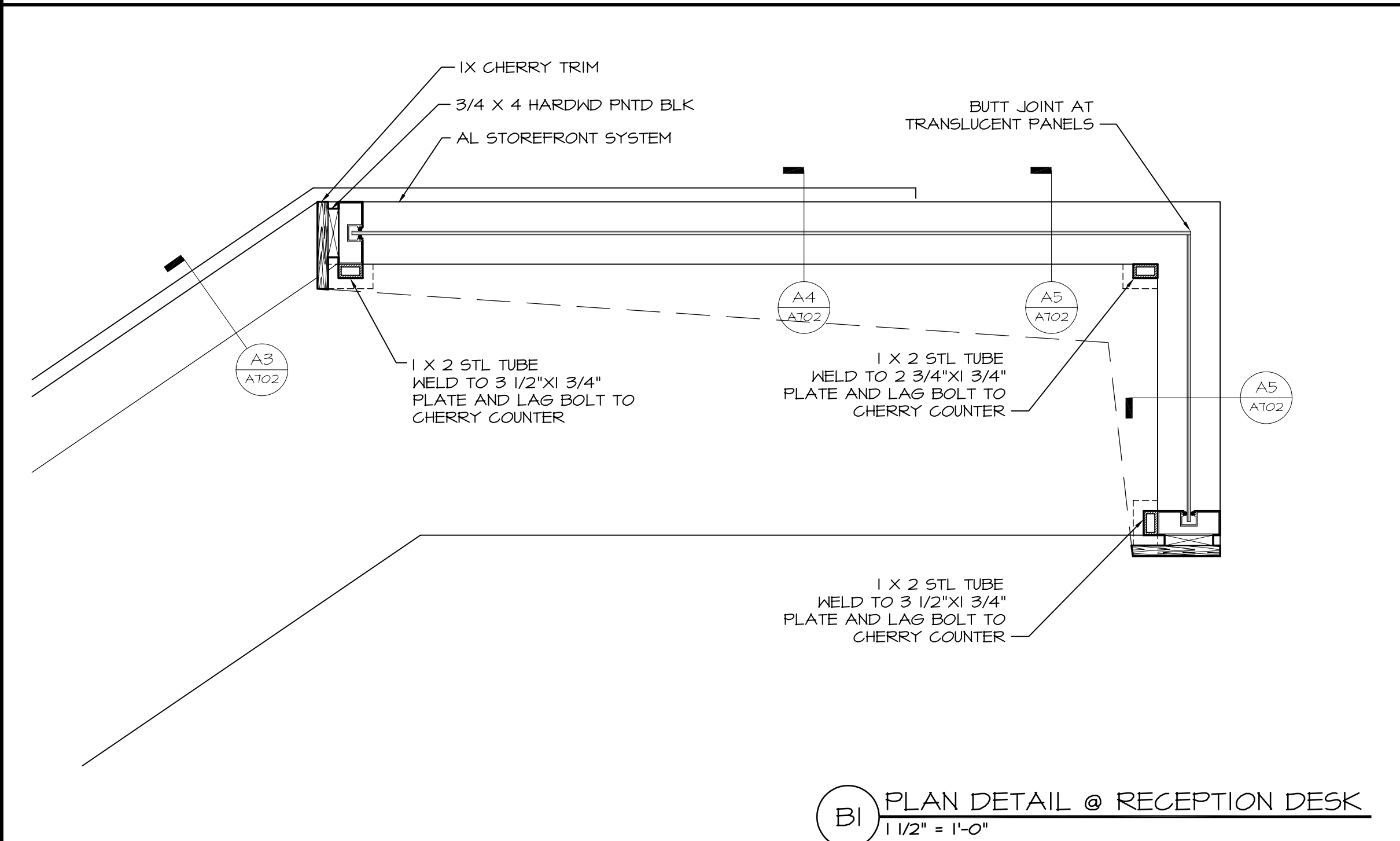
A4 SECTION @ RECEPTION DESK
 1 1/2" = 1'-0"



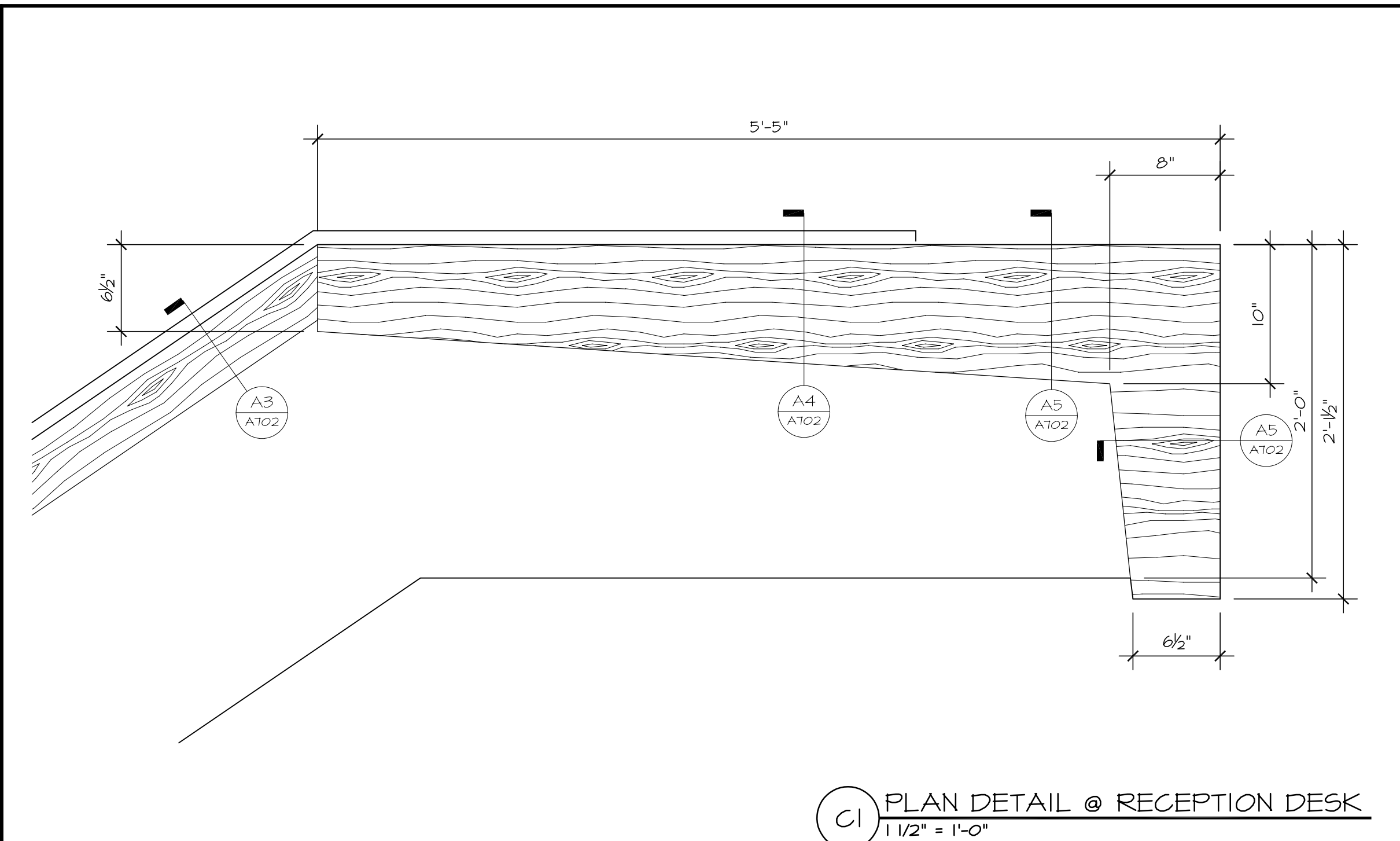
A3 SECTION @ RECEPTION DESK
 1 1/2" = 1'-0"



A1 PLAN DETAIL @ RECEPTION DESK
 1 1/2" = 1'-0"

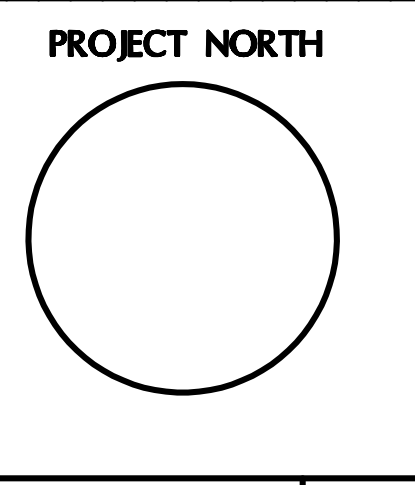


B1 PLAN DETAIL @ RECEPTION DESK
 1 1/2" = 1'-0"



C1 PLAN DETAIL @ RECEPTION DESK
 1 1/2" = 1'-0"

NO	DATE	REVISIONS
1	06/07/04	ISSUED FOR PRICING



OLYMPIA EQUITY INVESTORS
 280 FORE STREET
 SECOND FLOOR

TITLE
 DETAILS

Cubellis Associates Inc.
 Architecture Interiors Engineering
 450 East Street, 2nd Fl.
 Portland, ME 04101
 Tel: 207-874-2777
 Fax: 207-874-2775
 www.cubellis.com

A702

03312PT

SCALE
 AS NOTED

CHECKED BY
 CEN

DRAWN BY
 JMH

DATE
 JUNE 04, 2004

GENERAL NOTE:
 APPROVED SHOP DRAWINGS
 REQUIRED FOR ALL MILLWORK