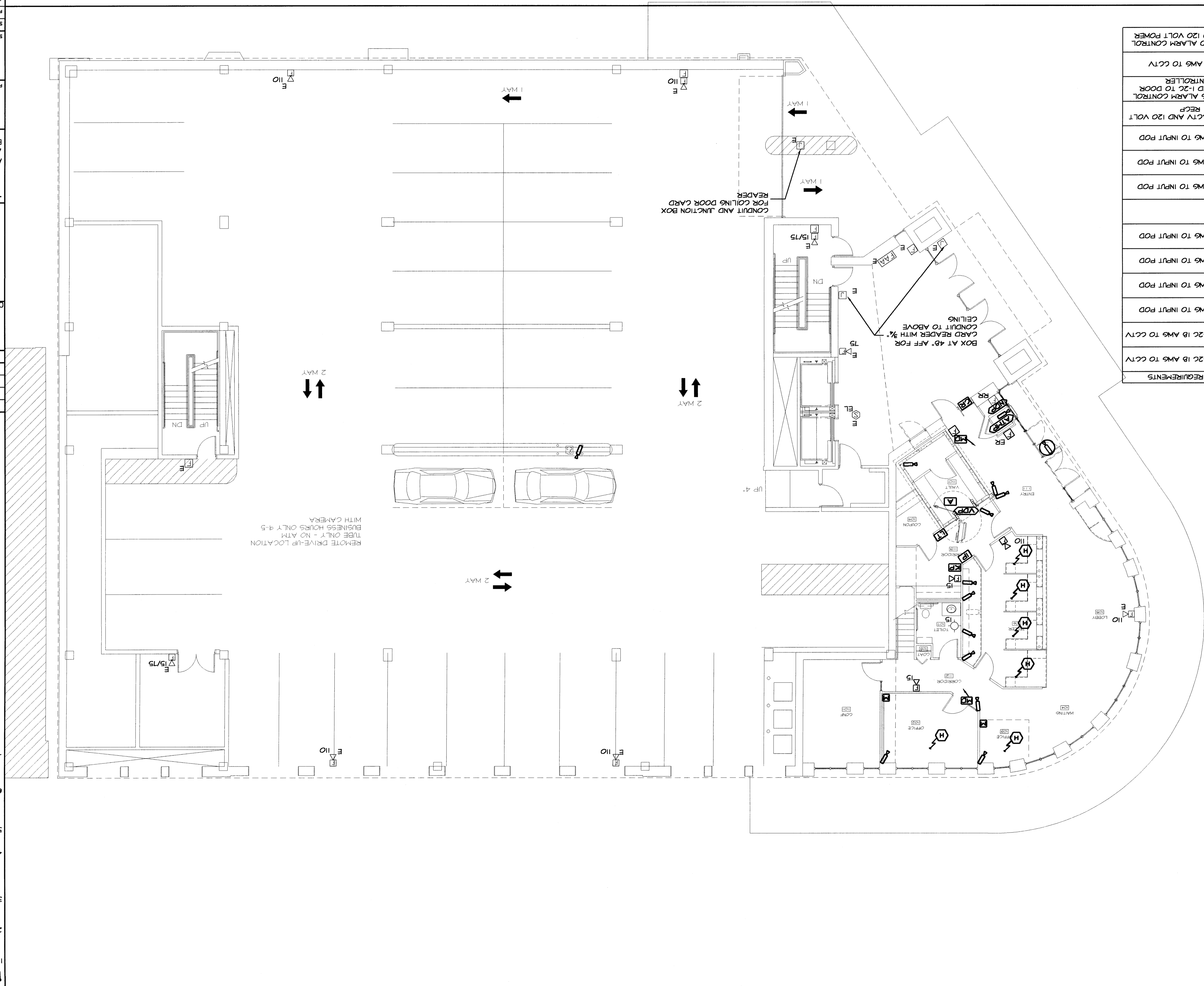


A1 FIRST FLOOR SYSTEMS PLAN

1/8" = 1'-0"

SYMBOL	ITEM DESCRIPTION	CABLE REQUIREMENTS
	CAMERA	1-COAX AND 1-2C 1B AWG TO CCTV
	DOME CAMERA	1-COAX AND 1-2C 1B AWG TO CCTV
	LOW TEMPERATURE ALARM	1-4C 1B AWG TO INPUT POD
	WALL MOUNTED MOTION DETECTOR	1-4C 1B AWG TO INPUT POD
	CEILING MOUNTED MOTION DETECTOR	1-4C 1B AWG TO INPUT POD
	KEY PAD	1-4C 1B AWG TO INPUT POD
	WIRELESS HOLD UP BUTTON	
	VAULT DOOR PROTECTION	2-4C 1B AWG TO INPUT POD
	ATM PROTECTION	2-4C 1B AWG TO INPUT POD
	NIGHT DEPOSIT PROTECTION	1-4C 1B AWG TO INPUT POD
	MONITOR	1-COAX TO CCTV AND 120 VOLT RECP
	CARD READER	1-2C 1B AWG ALARM CONTROL PANEL AND 1-2C TO DOOR CONTROLLER
	VAULT AUDIO	1-2C 1B AWG TO CCTV
	INPUT POD	1-4C AWG TO ALARM CONTROL PANEL AND 120 VOLT POWER



NOTES:

1. ALL FOUR DOOR CONTROLLERS WILL BE LOCATED IN COMPUTER ROOM ON SECOND FLOOR
2. THE VIP DIGITAL CCTV SYSTEM WILL BE LOCATED INSIDE THE SECOND FLOOR COMPUTER ROOM
3. ALARM WILL NEED A DEDICATED ELECTRICAL CIRCUIT WITH EIGHT DUPLEX RECEPTACLES SPACED APART TO ALLOW PLUG-IN TRANSFORMERS. SEE PANEL SCHEDULE FOR CIRCUIT NUMBER
4. CCTV WILL NEED TWO DUPLEX RECEPTACLES
5. ALL CAMERA RECEPTACLES TO BE PLACED 6" FROM CEILING COORDINATE EXACT LOCATION WITH ALARM INSTALLER
6. ALL CABLE TO BE IN PIPE IN WALLS AND BELOW SLAB TO ABOVE CEILING AND THEN CAN BE RUN OPEN ABOVE CEILING.
7. ELECTRICAL CONTRACTOR RESPONSIBLE FOR ALL BOXES, CONDUIT, WIRE, AND POWER REQUIREMENTS NEEDED FOR COMPLETE ALARM INSTALLATION.

PROJECT: BANGOR SAVINGS BANK
 PORTLAND, MAINE

ARCHITECTS • ENGINEERS
 WBRC
 44 Central Street
 Bangor, Maine 04401
 Tel: (207) 947-4511
 Fax: (207) 947-4828

PROJECT MANAGER: MLC
 JOB CWP/DRAWN: PEB
 A/E OF RECORD: RLR
 WBRC CAD #24769-ET101
 PROJECT No. 274769

AS NOTED
 DATE: --
 GRAPHIC SCALE: 0"

SYSTEM PLAN
 FIRST FLOOR

ISSUED FOR CONSTRUCTION
 06-11-04

REV.	DESCRIPTION	DATE
0		