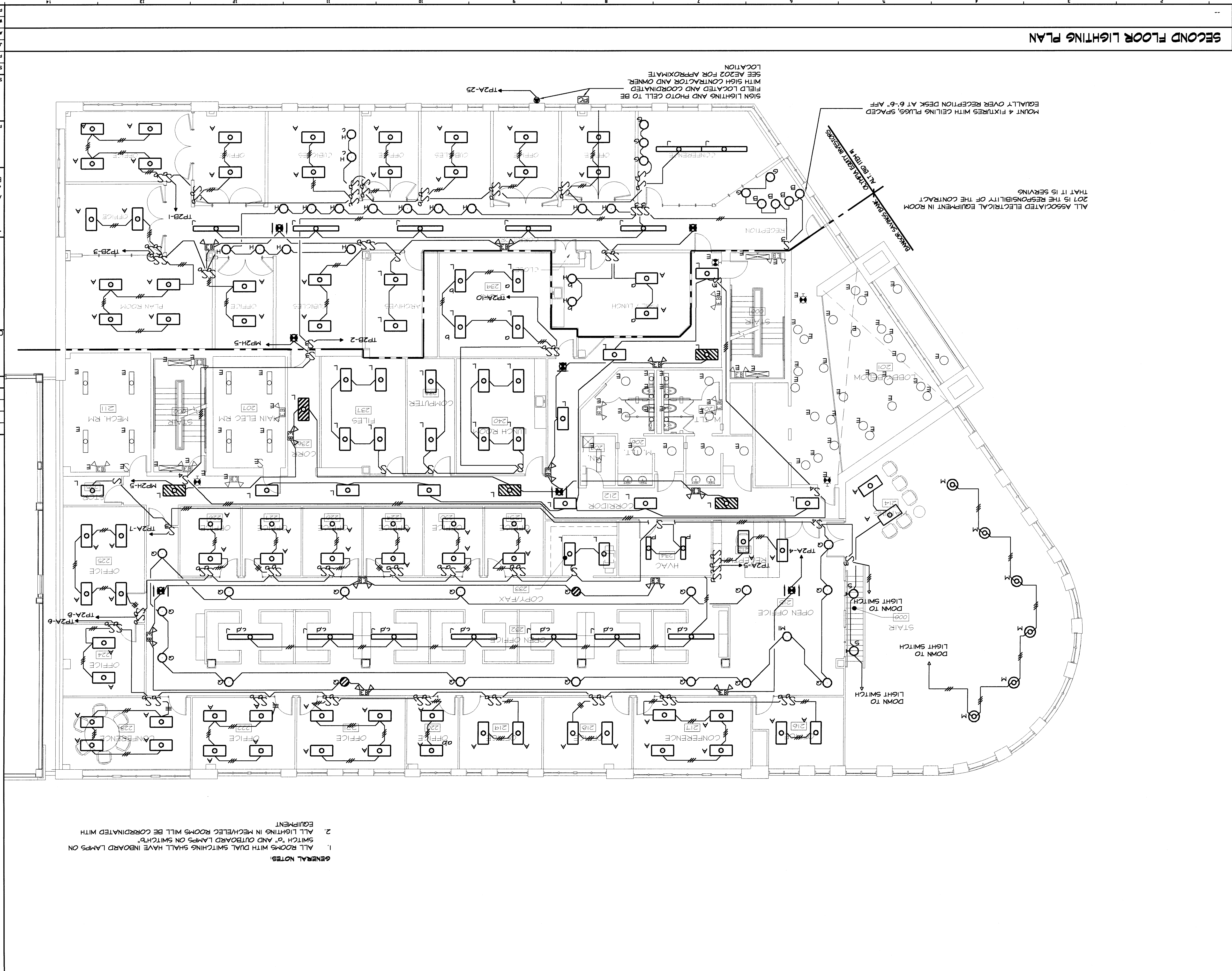


SECOND FLOOR LIGHTING PLAN



MOUNT 4 FIXTURES WITH CEILING PLUGS, SPACED EQUALLY OVER RECEPTION DESK AT 6'-6" AFF

ALL ASSOCIATED ELECTRICAL EQUIPMENT IN ROOM 201 IS THE RESPONSIBILITY OF THE CONTRACTOR THAT IT IS SERVING

SIGN LIGHTING AND PHOTO CELL TO BE FIELD LOCATED AND COORDINATED WITH SIGN CONTRACTOR AND OWNER SEE A202 FOR APPROXIMATE LOCATION

GENERAL NOTES:
 1. ALL ROOMS WITH DUAL SWITCHING SHALL HAVE INBOARD LAMPS ON SWITCH "a" AND OUTBOARD LAMPS ON SWITCH "b"
 2. ALL LIGHTING IN MECH/ELEC ROOMS WILL BE COORDINATED WITH EQUIPMENT

<p>PROJECT: BANGOR SAVINGS BANK 44 Central Street Bangor, Maine 04401 Tel: (207) 947-4511 Fax: (207) 947-4528</p>	
<p>PROJECT: PORTLAND, MAINE FORE STREET</p>	
<p>PROJECT TITLE: SECOND FLOOR LIGHTING PLAN</p>	
<p>SCALE: AS NOTED</p>	<p>DATE: --</p>
<p>GRAPHIC SCALE: 0"</p>	<p>SHEET NO. 1</p>
<p>PROJECT MANAGER: MLC</p>	<p>JOB CDP/DRAWN: PCB</p>
<p>A/E OF RECORD: RLR</p>	<p>WBRC CADD Q24769-EL102</p>
<p>SHEET NO. 1</p>	<p>PROJECT NO. 274769</p>
<p>WBRC ARCHITECTS • ENGINEERS</p>	
<p>PROJECT NORTH</p>	
<p>ISSUED FOR CONSTRUCTION 06-11-04</p>	
<p>CURRENT ISSUE STATUS:</p>	
<p>REV. 0</p>	<p>DATE</p>
<p>DESCRIPTION</p>	<p>DATE</p>