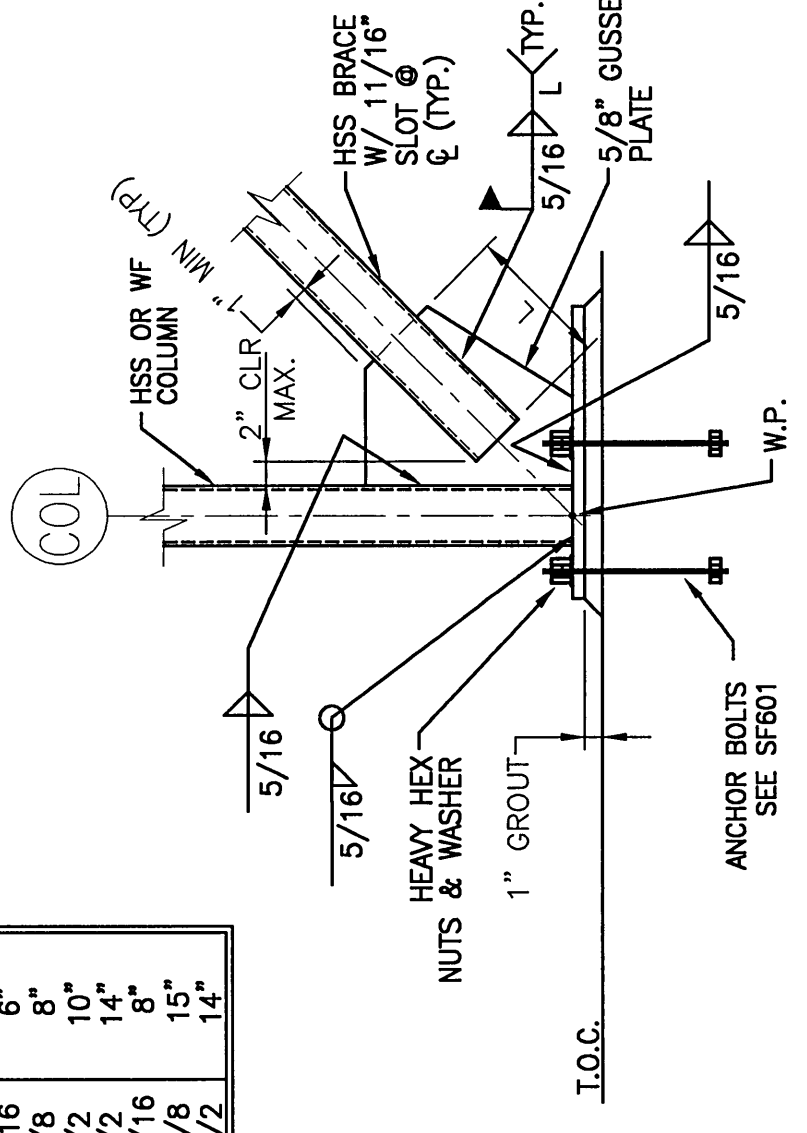


NOTE:

1. SEE S6001 FOR STRUCTURAL GENERAL NOTES.
2. LOADS INDICATED ON BRACE ELEVATIONS ARE ULTIMATE AND INCLUDE SEISMIC FORCES.

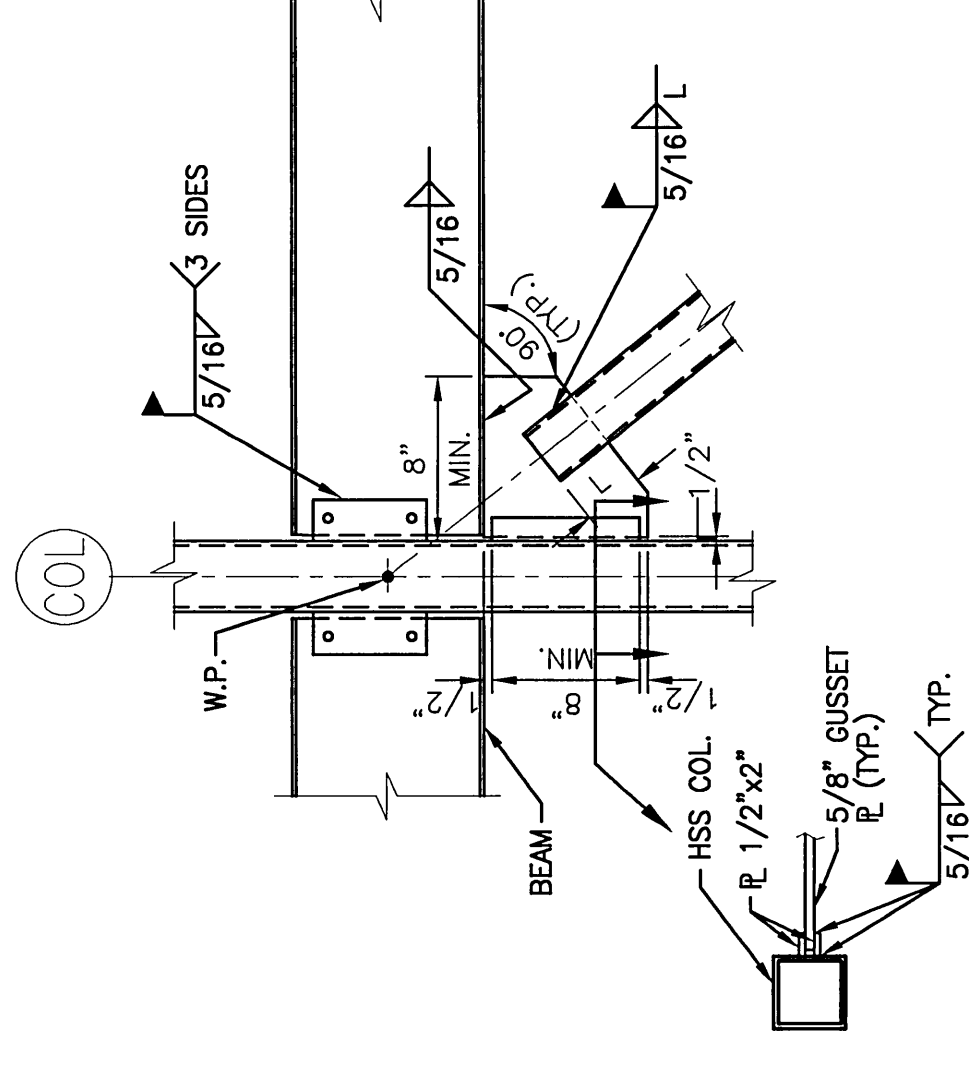
BRACE	L	MIN
HSS8x4 1/4	6"	6"
HSS8x6 1/8	8"	8"
HSS8x8 1/8	10"	10"
HSS8x10 1/2	14"	14"
HSS10x6 1/8	10"	10"
HSS12x6 1/2	14"	14"



N14 BRACING DETAIL

3/4"=1'-0"

HSS BRACE	L	MIN
4x4x1/4	4"	4"
5x5x5/16	6"	6"
6x6x1/4	8"	8"
6x6x5/8	8"	8"
8x8x1/2	10"	10"
10x6x5/16	8"	8"
10x6x5/8	8"	8"
10x6x5/8	9"	9"
12x6x5/8	12"	12"
12x6x5/16	10"	10"

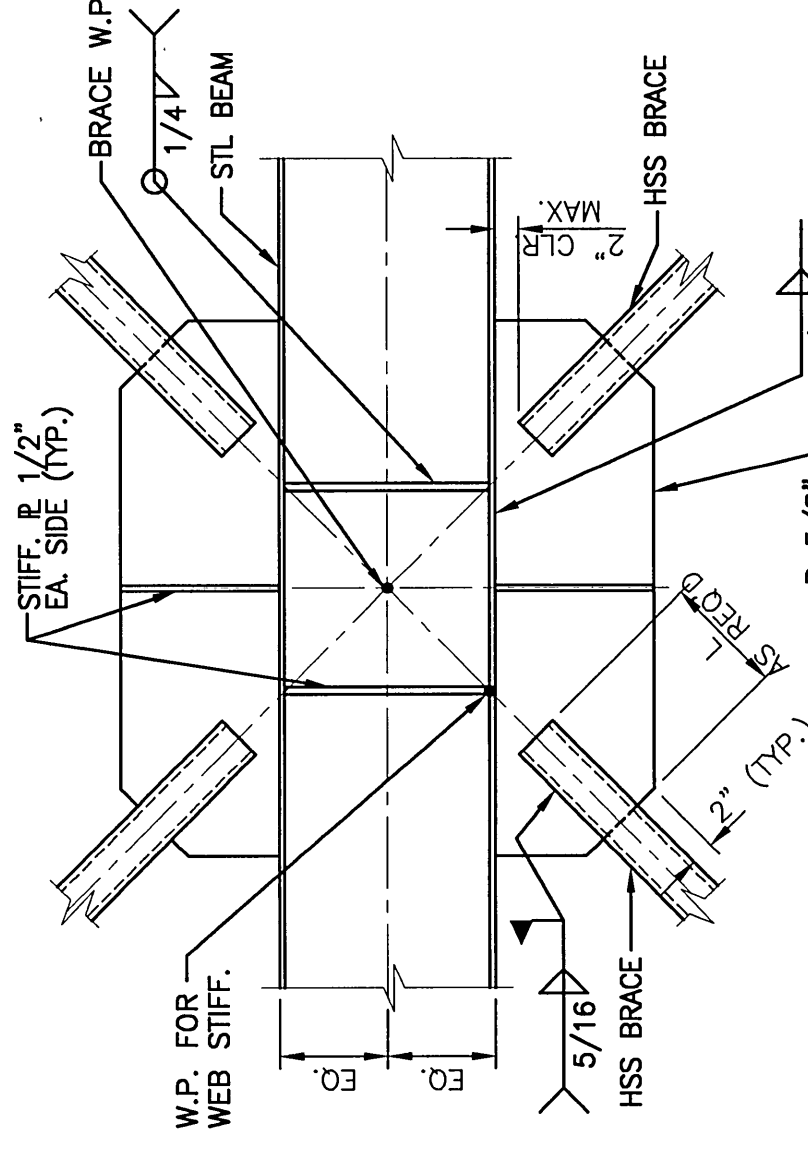


J14 BRACING DETAIL

3/4"=1'-0"

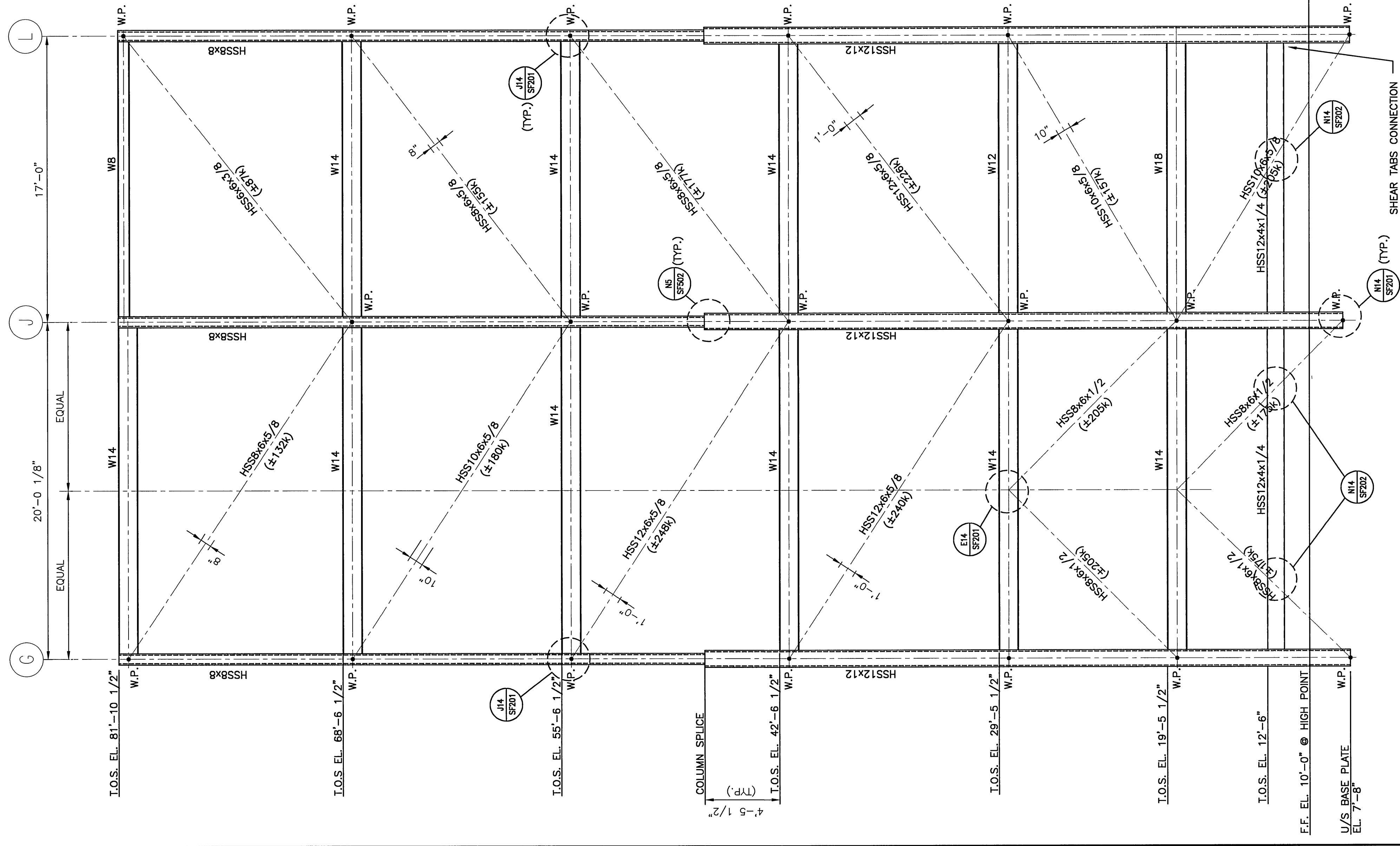
E14 BRACING DETAIL

3/4"=1'-0"



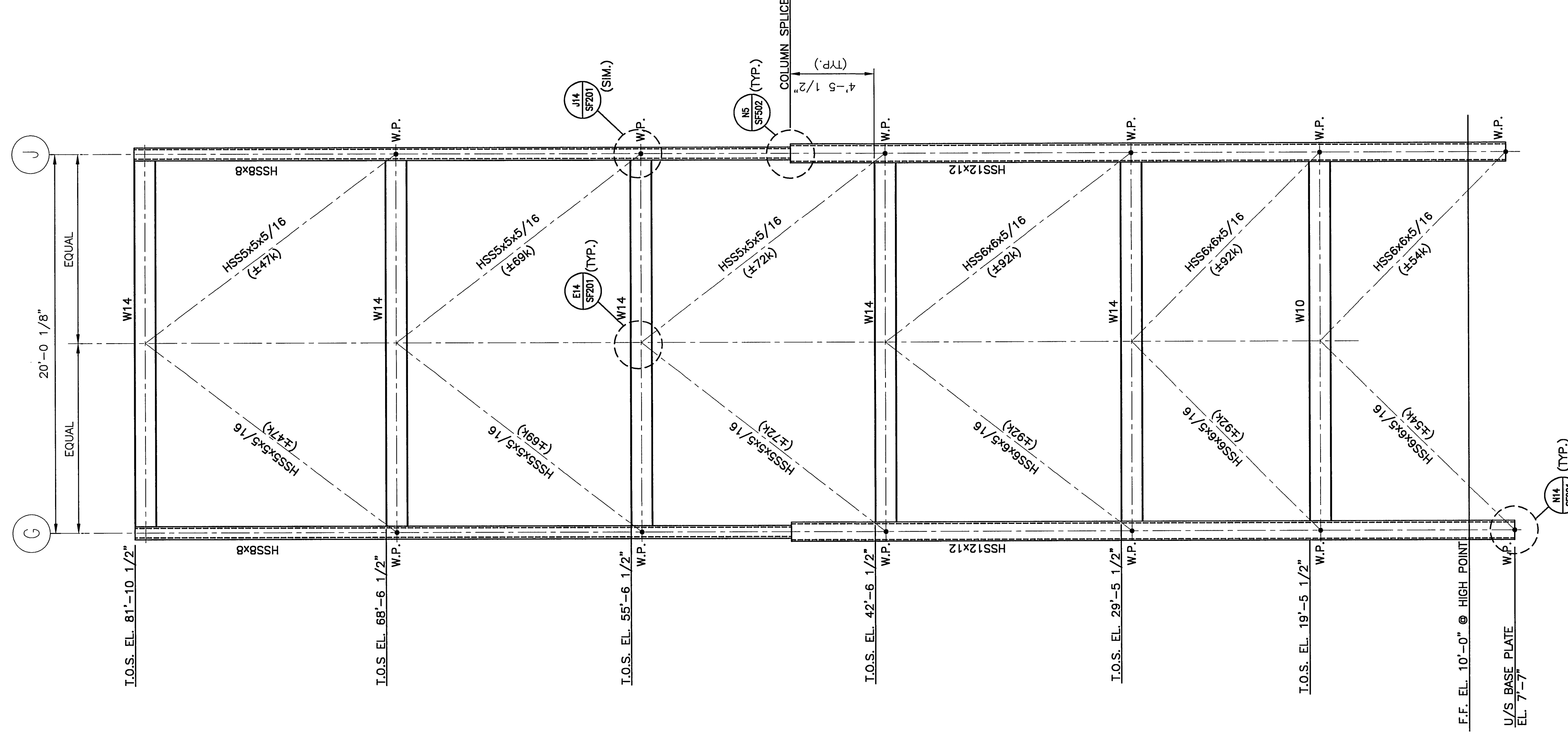
A6 BRACING DETAIL

3/4"=1'-0"



A6 BRACING ELEVATION @ COL. LINE 10

1/4"=1'-0"



A1 BRACING ELEVATION @ COL. LINE 13

1/4"=1'-0"

REV.	DESCRIPTION	DATE
0	ISSUED FOR CONSTRUCTION	12-15-03

ISSUED FOR CONSTRUCTION
12-15-03

CURRENT ISSUE STATUS:



SMRT
ARCHITECTURE ENGINEERING PLANNING
141 Elm Street, Box 618
Portland, Maine 04104
Tel: (603) 773-3446
Fax: (603) 773-0070

FORE STREET
OFFICE BUILDING
PORTLAND, MAINE

BRACING
ELEVATIONS

SHEET TITLE:	AS NOTED	DATE:	12-15-03
SCALE:	JLJ	GRAPHIC SCALE:	0'
PROJECT MANAGER:	JLJ	PROJECT NO.:	03087
JOB CAP/DRAWN:	R/L/JSG	SHEET NO.:	SF201
A/E OF RECORD:	JLJ	SMART CAD FILE:	SF201-03087
PROJECT NO.:	03087		